



DRILL STEM TEST REPORT

Prepared For: **RJM Company**

Po Box 256 Claflin Kansas
67525

ATTN: Chris Hoffman

Kaiser Family Trust

13-18s-11w-Barton

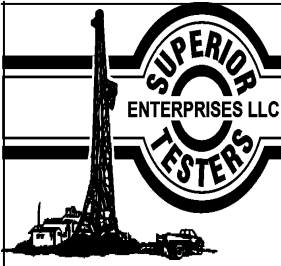
Start Date: 2012.12.18 @ 01:41:00

End Date: 2012.12.18 @ 07:39:30

Job Ticket #: 17717 DST #: 2

Superior Testers Enterprises LLC
PO Box 138 Great Bend KS 67530
1-800-792-6902

Printed: 2012.12.18 @ 21:31:15



DRILL STEM TEST REPORT

RJM Company
 Po Box 256 Claflin Kansas
 67525
 ATTN: Chris Hoffman

13-18s-11w-Barton
Kaiser Family Trust
 Job Ticket: 17717 **DST#:2**
 Test Start: 2012.12.18 @ 01:41:00

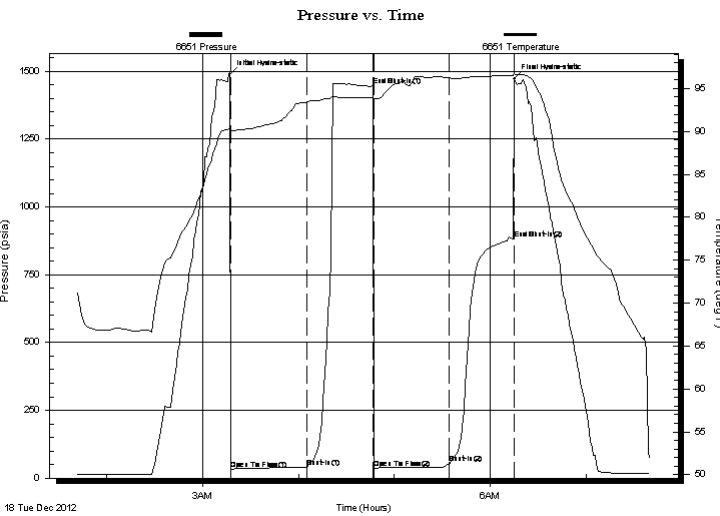
GENERAL INFORMATION:

Formation: **Lansing B**
 Deviated: No Whipstock: ft (KB)
 Time Tool Opened: 03:17:30
 Time Test Ended: 07:39:30
 Test Type: Conventional Bottom Hole (Initial)
 Tester: Dustin Ellis
 Unit No: 3315-Great Bend-50
 Interval: **3010.00 ft (KB) To 3027.00 ft (KB) (TVD)**
 Reference Elevations: 1769.00 ft (KB)
 Total Depth: 3027.00 ft (KB) (TVD) 1760.00 ft (CF)
 Hole Diameter: 7.88 inches Hole Condition: Fair KB to GR/CF: 9.00 ft

Serial #: 6651

Press@RunDepth: 53.50 psia @ ft (KB) Capacity: 5000.00 psia
 Start Date: 2012.12.18 End Date: 2012.12.18 Last Calib.: 2012.12.18
 Start Time: 01:42:00 End Time: 07:39:30 Time On Btm: 2012.12.18 @ 03:17:00
 Time Off Btm: 2012.12.18 @ 06:15:00

TEST COMMENT: 1st Open 45 minutes Very slow building blow 1/2 inch. into bucket
 1st Shut in 45 minutes No blow back
 2nd Open 45 minutes Weak surface blow 1/2 inch stayed steady though out.
 2nd Shut in 45 minutes No blow back



PRESSURE SUMMARY

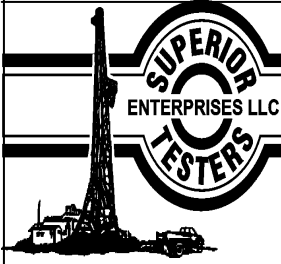
Time (Min.)	Pressure (psia)	Temp (deg F)	Annotation
0	1488.86	90.39	Initial Hydro-static
1	32.76	89.92	Open To Flow (1)
48	41.30	93.38	Shut-In(1)
90	1446.03	93.98	End Shut-In(1)
90	37.81	93.35	Open To Flow (2)
137	53.50	96.22	Shut-In(2)
178	883.83	96.55	End Shut-In(2)
178	1472.68	96.87	Final Hydro-static

Recovery

Length (ft)	Description	Volume (bbl)
31.00	Mud 100%	0.43

Gas Rates

Choke (inches)	Pressure (psia)	Gas Rate (Mcf/d)



DRILL STEM TEST REPORT

RJM Company
 Po Box 256 Claflin Kansas
 67525
 ATTN: Chris Hoffman

13-18s-11w-Barton
Kaiser Family Trust
 Job Ticket: 17717 **DST#:2**
 Test Start: 2012.12.18 @ 01:41:00

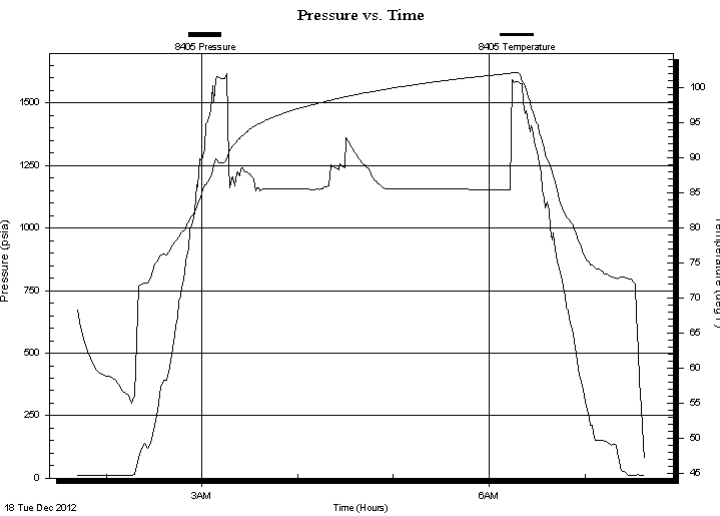
GENERAL INFORMATION:

Formation: **Lansing B**
 Deviated: No Whipstock: ft (KB) Test Type: Conventional Bottom Hole (Initial)
 Time Tool Opened: 03:17:30 Tester: Dustin Ellis
 Time Test Ended: 07:39:30 Unit No: 3315-Great Bend-50
Interval: 3010.00 ft (KB) To 3027.00 ft (KB) (TVD) Reference Elevations: 1769.00 ft (KB)
 Total Depth: 3027.00 ft (KB) (TVD) 1760.00 ft (CF)
 Hole Diameter: 7.88 inches Hole Condition: Fair KB to GR/CF: 9.00 ft

Serial #: 8405 Below

Press@RunDepth: psia @ 3026.89 ft (KB) Capacity: 5000.00 psia
 Start Date: 2012.12.18 End Date: 2012.12.18 Last Calib.: 2012.12.18
 Start Time: 01:42:00 End Time: 07:37:30 Time On Btm:
 Time Off Btm:

TEST COMMENT: 1st Open 45 minutes Very slow building blow 1/2 inch. into bucket
 1st Shut in 45 minutes No blow back
 2nd Open 45 minutes Weak surface blow 1/2 inch stayed steady though out.
 2nd Shut in 45 minutes No blow back



PRESSURE SUMMARY

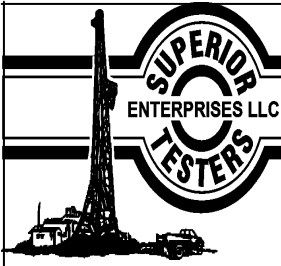
Time (Min.)	Pressure (psia)	Temp (deg F)	Annotation

Recovery

Length (ft)	Description	Volume (bbl)
31.00	Mud 100%	0.43

Gas Rates

Choke (inches)	Pressure (psia)	Gas Rate (Mcf/d)



DRILL STEM TEST REPORT

RJM Company
 Po Box 256 Claflin Kansas
 67525
 ATTN: Chris Hoffman

13-18s-11w-Barton
Kaiser Family Trust
 Job Ticket: 17717 **DST#:2**
 Test Start: 2012.12.18 @ 01:41:00

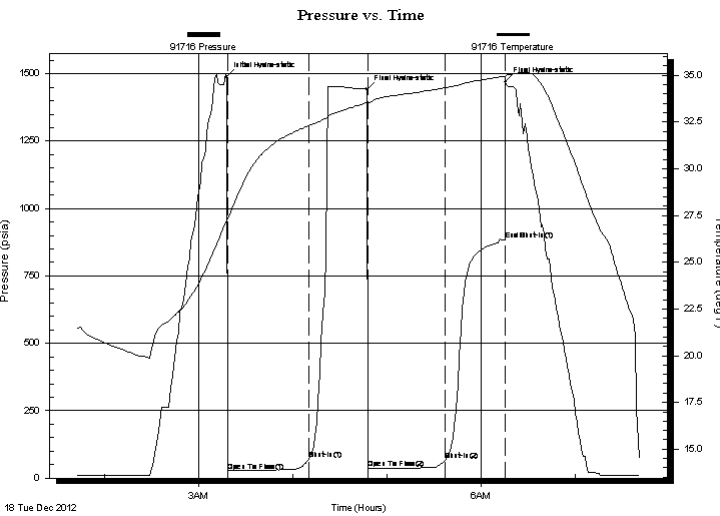
GENERAL INFORMATION:

Formation: **Lansing B**
 Deviated: No Whipstock: ft (KB)
 Test Type: Conventional Bottom Hole (Initial)
 Time Tool Opened: 03:17:30 Tester: Dustin Ellis
 Time Test Ended: 07:39:30 Unit No: 3315-Great Bend-50
 Interval: **3010.00 ft (KB) To 3027.00 ft (KB) (TVD)** Reference Elevations: 1769.00 ft (KB)
 Total Depth: 3027.00 ft (KB) (TVD) 1760.00 ft (CF)
 Hole Diameter: 7.88 inches Hole Condition: Fair KB to GR/CF: 9.00 ft

Serial #: 91716 Outside

Press@RunDepth: 882.28 psia @ 3012.16 ft (KB) Capacity: 5000.00 psia
 Start Date: 2012.12.18 End Date: 2012.12.18 Last Calib.: 2012.12.18
 Start Time: 01:41:00 End Time: 07:41:29 Time On Btm: 2012.12.18 @ 03:17:30
 Time Off Btm: 2012.12.18 @ 04:47:00

TEST COMMENT: 1st Open 45 minutes Very slow building blow 1/2 inch. into bucket
 1st Shut in 45 minutes No blow back
 2nd Open 45 minutes Weak surface blow 1/2 inch stayed steady though out.
 2nd Shut in 45 minutes No blow back



PRESSURE SUMMARY

Time (Min.)	Pressure (psia)	Temp (deg F)	Annotation
0	1487.72	27.23	Initial Hydro-static
1	26.99	27.33	Open To Flow (1)
53	70.54	32.30	Shut-In(1)
90	1442.30	33.53	Final Hydro-static
90	35.62	33.53	Open To Flow (2)
140	67.02	34.32	Shut-In(2)
178	882.28	34.93	End Shut-In(1)
178	1469.94	34.95	Final Hydro-static

Recovery

Length (ft)	Description	Volume (bbl)
31.00	Mud 100%	0.43

Gas Rates

Choke (inches)	Pressure (psia)	Gas Rate (Mcf/d)



DRILL STEM TEST REPORT

TOOL DIAGRAM

RJM Company
 Po Box 256 Claflin Kansas
 67525
 ATTN: Chris Hoffman

13-18s-11w-Barton
Kaiser Family Trust
 Job Ticket: 17717 **DST#:2**
 Test Start: 2012.12.18 @ 01:41:00

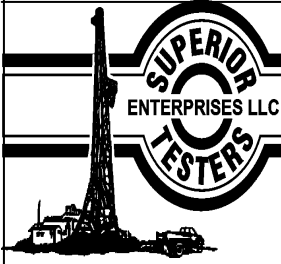
Tool Information

Drill Pipe:	Length: 2998.00 ft	Diameter: 3.80 inches	Volume: 42.05 bbl	Tool Weight: 2000.00 lb
Heavy Wt. Pipe:	Length: 0.00 ft	Diameter: 0.00 inches	Volume: 0.00 bbl	Weight set on Packer: 20000.00 lb
Drill Collar:	Length: 0.00 ft	Diameter: 0.00 inches	Volume: 0.00 bbl	Weight to Pull Loose: 42000.00 lb
			<u>Total Volume: 42.05 bbl</u>	Tool Chased 2.00 ft
Drill Pipe Above KB:	10.61 ft			String Weight: Initial 38000.00 lb
Depth to Top Packer:	3010.00 ft			Final 38000.00 lb
Depth to Bottom Packer:	ft			
Interval between Packers:	17.67 ft			
Tool Length:	40.28 ft			
Number of Packers:	2	Diameter: 6.75 inches		

Tool Comments:

Tool Description	Length (ft)	Serial No.	Position	Depth (ft)	Accum. Lengths
------------------	-------------	------------	----------	------------	----------------

P.O. Sub	0.31			2987.70	
C.O. Sub	0.31			2988.01	
P.O. Sub	0.31			2988.32	
Recorder	1.80		Fluid	2990.12	
Conv. S.I. Tool	1.52			2991.64	
Sampler	1.10			2992.74	
HMV	2.10			2994.84	
Recorder	1.80		Inside	2996.64	
Telemetry Tool	7.01			3003.65	
Jars	2.05			3005.70	
Bypass Hanger	0.32			3006.02	
Safety Joint	0.78			3006.80	
Packer	1.78			3008.58	22.61 Bottom Of Top Packer
Packer	1.42			3010.00	
Stubb	0.36			3010.36	
Recorder Carrier	1.80			3012.16	
Recorder	0.00	91716	Outside	3012.16	
Recorder	0.00	6657	Outside	3012.16	
Perforations	10.00			3022.16	
Bypass Receiver	0.85			3023.01	
Blank Spacing	0.00			3023.01	
Stubb	0.36			3023.37	17.67 Tool Interval
Packer	1.42			3024.79	
Bypass Hanger	0.30			3025.09	
Recorder	1.80	8405	Below	3026.89	
Collar	0.00			3026.89	



DRILL STEM TEST REPORT

FLUID SUMMARY

RJM Company

13-18s-11w-Barton

Po Box 256 Claflin Kansas
67525

Kaiser Family Trust

Job Ticket: 17717

DST#:2

ATTN: Chris Hoffman

Test Start: 2012.12.18 @ 01:41:00

Mud and Cushion Information

Mud Type: Gel Chem

Cushion Type:

Oil API:

deg API

Mud Weight: 9.00 lb/gal

Cushion Length:

ft

Water Salinity:

ppm

Viscosity: 50.00 sec/qt

Cushion Volume:

bbl

Water Loss: 8.79 in³

Gas Cushion Type:

Resistivity: ohm.m

Gas Cushion Pressure:

psia

Salinity: 1800.00 ppm

Filter Cake: 1.00 inches

Recovery Information

Recovery Table

Length ft	Description	Volume bbl
31.00	Mud 100%	0.435

Total Length: 31.00 ft Total Volume: 0.435 bbl

Num Fluid Samples: 0

Num Gas Bombs: 0

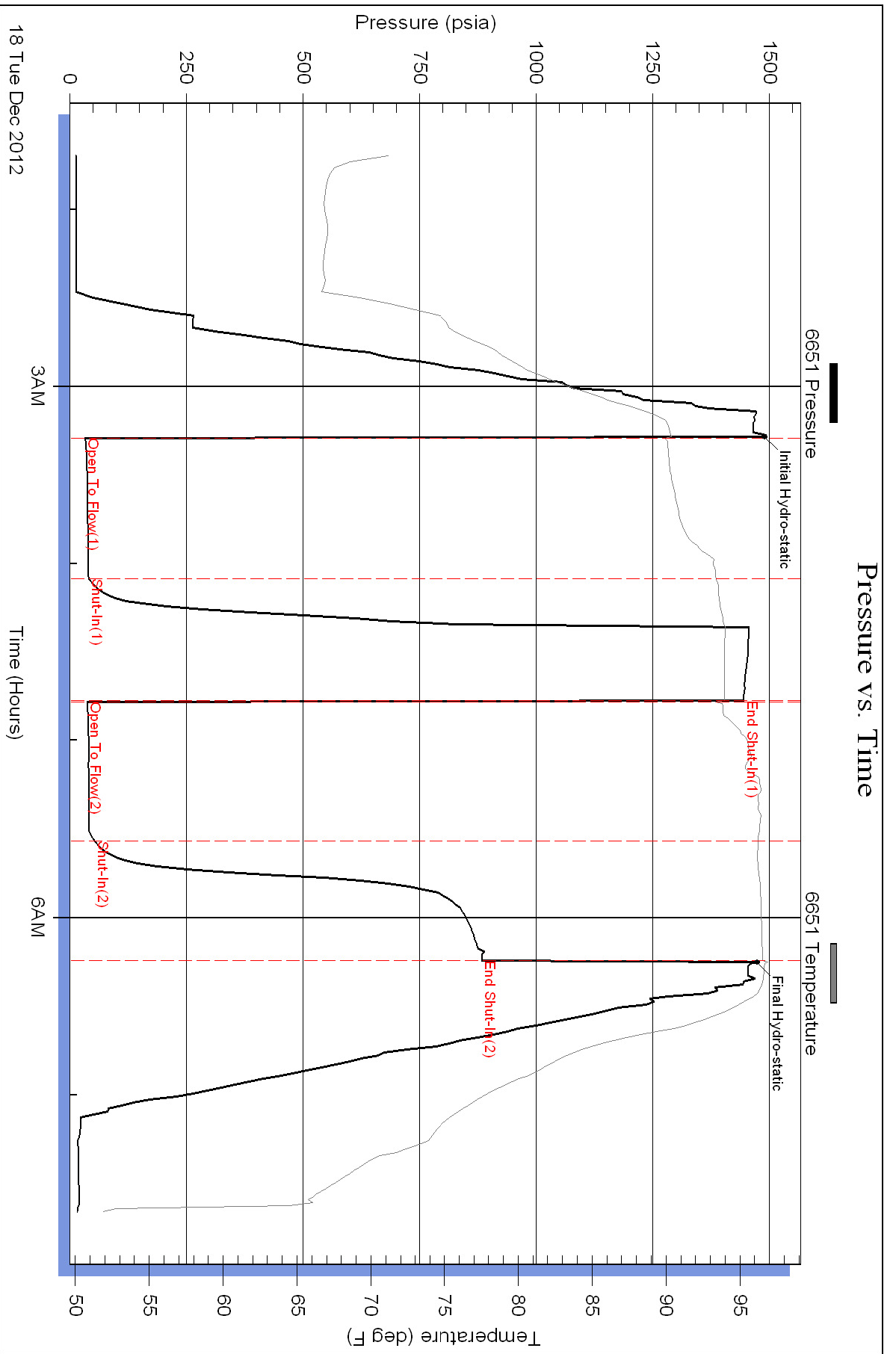
Serial #:

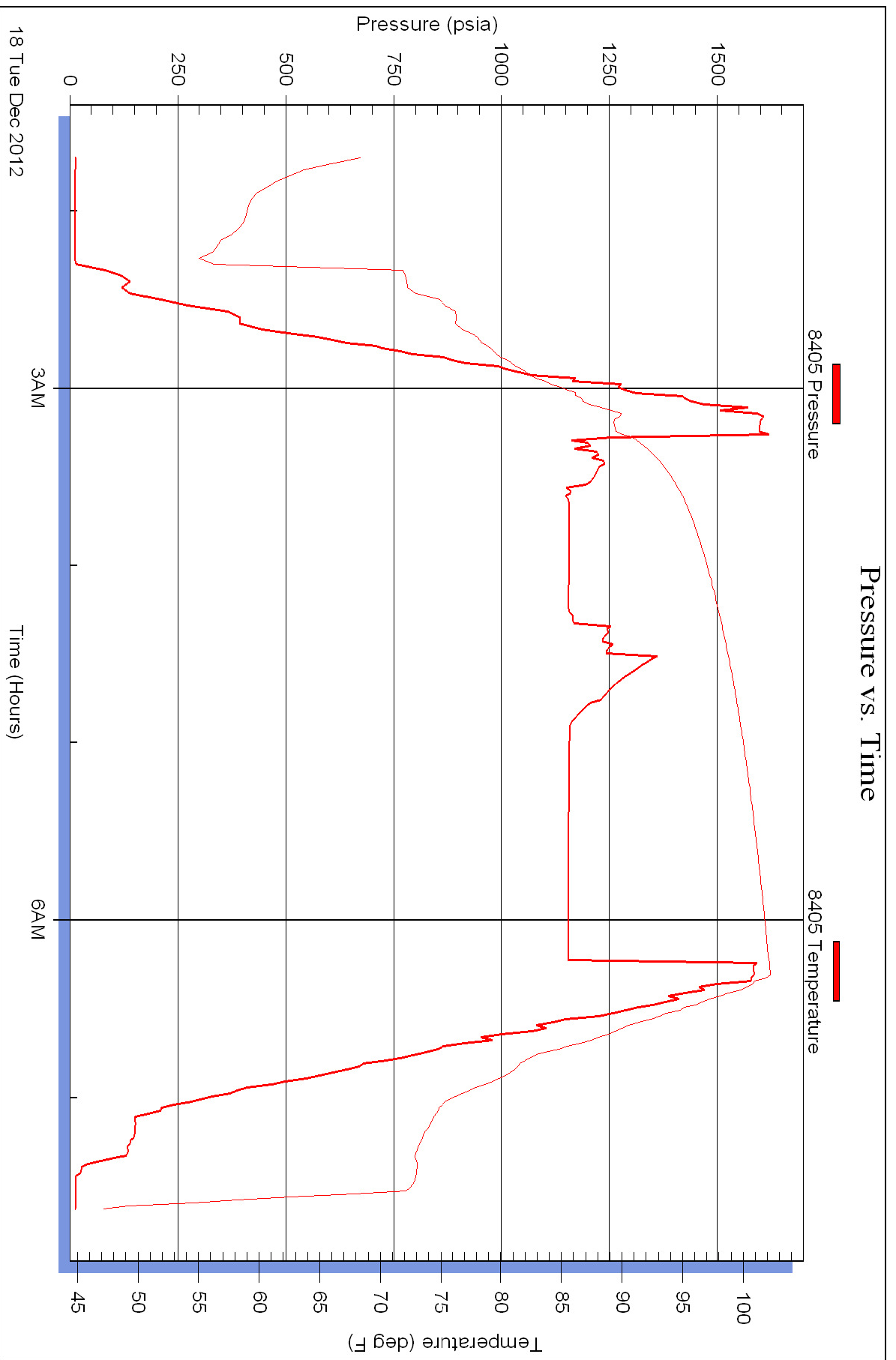
Laboratory Name:

Laboratory Location:

Recovery Comments:

Pressure vs. Time





Pressure vs. Time

