

LITHOLOGY STRIP LOG

WellSight Systems

Scale 1:240 (5"=100') Imperial

Well Name: Hamblin Trust #1-10
Location: 1750' FNL & 660' FEL, Sec. 10-T27S-R18W, Kiowa Co., KS.
Licence Number: 15-097-21741-0000 Region: Greensburg NW
Spud Date: 12/27/2012 Drilling Completed: 1/4/2013
Surface Coordinates: 1750' FNL & 660' FEL, Sec. 10-T27S-R18W

Bottom Hole Same as above
Coordinates:
Ground Elevation (ft): 2168' K.B. Elevation (ft): 2179'
Logged Interval (ft): 3300' To: 4850' Total Depth (ft): 4850'
Formation: Viola at Total Depth
Type of Drilling Fluid: Freshwater/Gel to 3433'; Chemical Gel 3433' to 4850'
Printed by MUD.LOG from WellSight Systems 1-800-447-1534 www.WellSight.com

OPERATOR

Company: Strata Exploration, Inc.
Address: P.O. Box 401
Fairfield, IL. 62837-0401

GEOLOGIST

Name: Jon D. Christensen
Company: Consulting Petroleum Geologist
Address: 9002 W. Silver Hollow St.
Wichita, KS. 67205-8856

Cores

None Taken

DSTs

DST #1(Miss. Chert) 4676' - 4721'(Corrected Depths to LOG) Test Times 15"-45"-45"-120 IFP Weak to Fair 4.5" Blow, FFP Fair 5" Blow; REC: 185' Gas in Pipe, 15' VSGCM, no oil, no water; IFP 20-25#, ISIP 93#, FFP 24-28#, FSIP 166#, IHP 2385#, FHP 2301#, BHT 127 Deg. F.

DST #2(Kinderhook Sand) 4720' - 4761'(Corrected Depths to LOG) Test Times 15"-45"-30"-60" IFP Weak 0.75" Blow, FFP Weak Surface to 0.25" Blow, no Blowback on SI's; REC: 15' Drlg. Mud with oil specks, no water; IFP 18-23#, ISIP 54#, FFP 24-27#, FSIP 42#, IHP 2420#, FHP 2336#, BHT 124 Deg. F.

Comments

12/27/12 MIRU Sterling Drilling Rig #2, Spud at 9:30 PM.; 12/28/12 TD. 567' - Wiper Trip prior to setting Surface Casing; 12/29/12 Drilling at 850'; 12/30/12 Drilling at 2380'; 12/31/12 Drilling at 3315'; 1/1/13 Drilling at 4088'; 1/2/13 Drilling at 4581'; 1/3/13 TD. 4725' - DST #1; 1/4/13 TD. 4765' - TIH after DST #2, Reached TD. 4850' at 4:15 PM., LTD. 4850'; 1/5/13 RTD. 4850' - P & A, Rigging Down.

Set new 8 5/8"(24#) Surface Casing at 561' with 350 sacks of Cement(Basic Energy Services). Cement Did Circulate. PD. 11:30 AM. 12/29/12.

Surveys: 0.75 Deg. at 567'(Surface Casing); 0.75 Deg. at 4725'(DST #1); 0.75 Deg. at 4850' RTD.

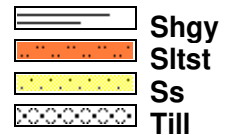
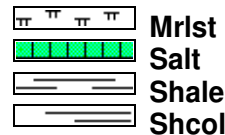
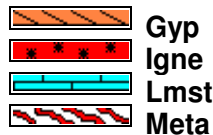
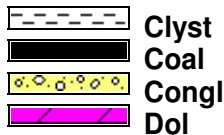
Pipe Strap at 4725'(DST #1): Strap 2.82' Short to the Board, no correction made to the Board.

After review of the Halliburton Logs, DST data and lack of commercial indications of hydrocarbons, the operator elected to Plug and Abandon the Hamblin Trust #1-10 at Total Depth 4850' on 1/5/2013.

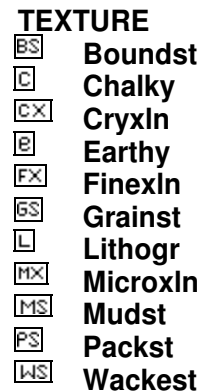
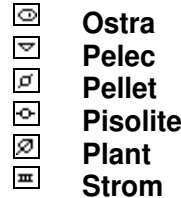
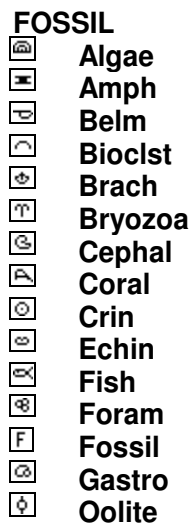
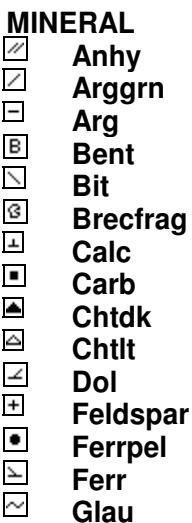
LOG TOPS: Chase 2393(-214), Stotler Lmst. 3364(-1185), Howard 3558(-1379), Queen Hill Shale 3864(-1685), Heebner Shale 3993(-1814), Toronto 4009(-1830), Brown Lmst. 4136(-1957), Lansing 'A' 4151(-1972), Lansing/KC. 'H' 4304(-2125), Stark Shale 4435(-2256), Swope 4443(-2264), Hertha 4492(-2313), Base Kansas City 4525(-2346), Marmaton 4571(-2392), Pawnee 4620(-2441), Cherokee Shale 4657(-2478), Miss. Chert 4700(-2521), Kinderhook Shale 4718(-2539), Kinderhook Sand 4748(-2569), Viola 4808(-2629).

NOTE: This log was shifted upward by 4' for correlation purposes with the Halliburton LOGS.

ROCK TYPES



ACCESSORIES



OTHER SYMBOLS

- POROSITY**
 [E] Earthy
 [B] Fenest
 [F] Fracture
 [X] Inter
 [M] Moldic
 [O] Organic
 [P] Pinpoint

- [V] Vuggy
SORTING
 [W] Well
 [M] Moderate
 [P] Poor

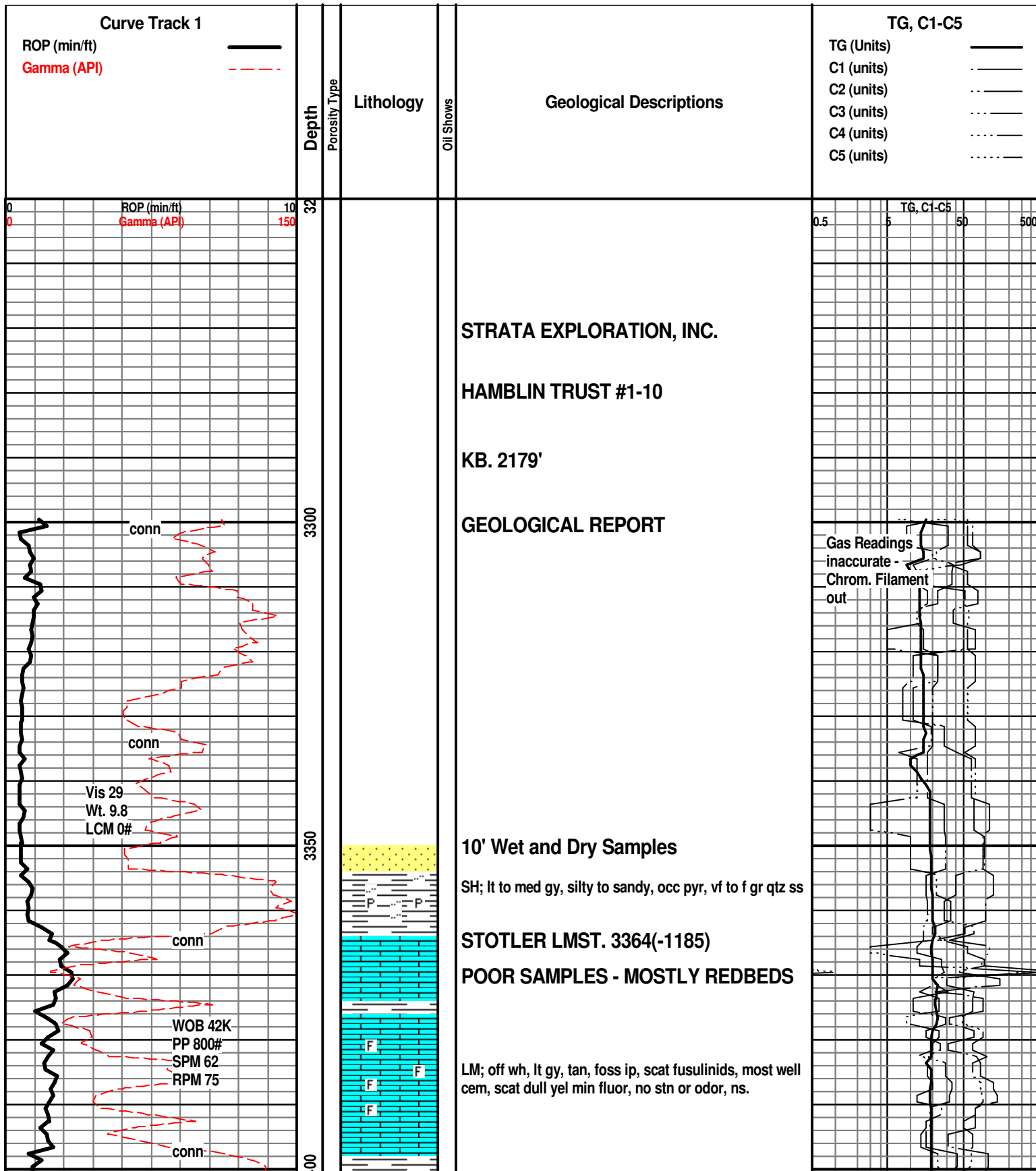
- ROUNDING**
 [R] Rounded
 [r] Subrnd
 [a] Subang
 [A] Angular

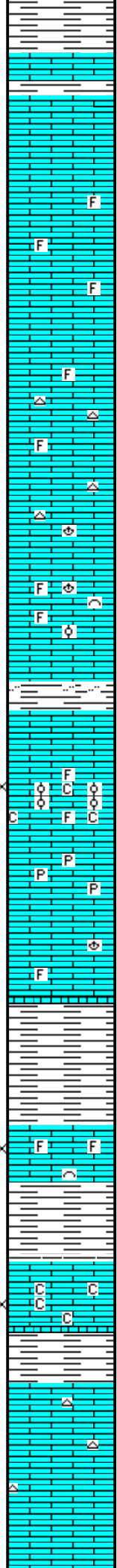
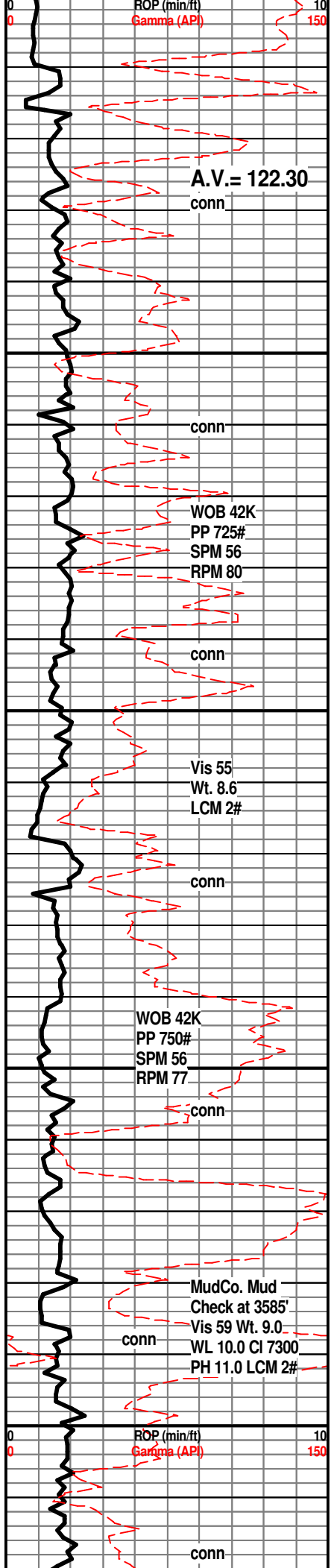
- [S] Spotted
 [Q] Ques
 [D] Dead

- EVENT**
 [T] Rft
 [S] Sidewall

- OIL SHOW**
 [O] Even

- INTERVAL**
 [C] Core
 [D] Dst





SH; med gy, gy grn, platy

LM; lt gy, lt brn, hd, blocky, tite

LM; lt gy to lt brn, foss ip, most dense, tite, ns.

Displace Mud System at 3433'

LM; off wh, wh, lt gy, foss ip, most dense, blocky, scat lt yel min fluor, no stn or odor, ns.

VERY POOR SAMPLES - STILL MOSTLY REDBED AND ANHYDRITE, FINELY GROUND UP

LM; lt gy brn, tan, scat foss mat, occ tan cht, no vis por, no gas kick, ns.

LM; off wh, tan, v. foss ip, scat lt to med yel min fluor, no stn or odor, no gas kick, ns.

SH; med to dk gy, platy, smooth, occ silty

LM; tan to off wh, foss - partly oolitic, gd interpart por, minor soft chalky mtx, lt yel fluor, no stn or odor, no gas kick, ns.

LM; tan to lt gy, buff, fxln, hd, scat pyr, no fluor, no stn or odor, ns.

BETTER SAMPLES

LM; tan to lt brn, blocky, dense, rarely foss, dull yel min fluor, ns.

SH; lt gy to grn, platy, fiss

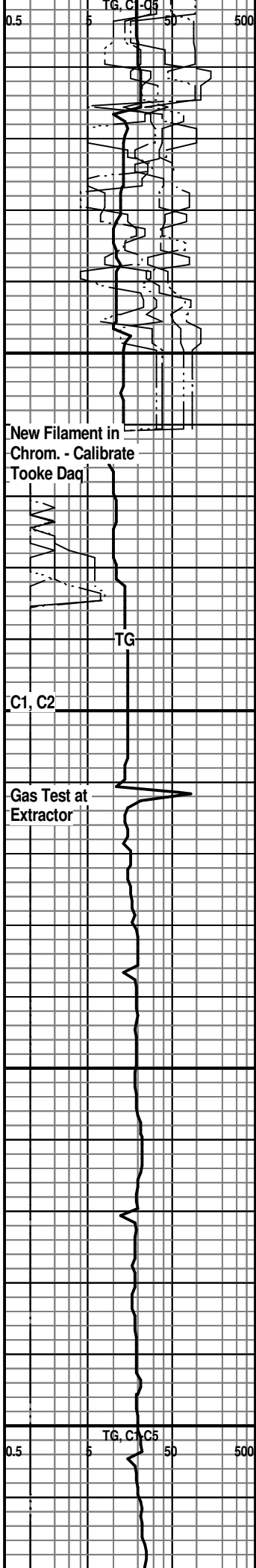
HOWARD 3558(-1379)

LM; off wh, lt brn, buff, foss ip, scat poor interpart por, occ soft chalky mtx, lt yel min fluor, no stn or odor, no gas kick, ns.

SH; med to dk gy, fiss, platy

LM; tan to cream, f to med xln, scat soft sucrosic text, fair interxln por, lt yel fluor, some soft chalky mtx, ns.

LM; off wh, buff, tan, fxln w/occ med xln interbdd, poor to no vis por, scat lt yel min fluor, rare gy cht, ns.



WOB 42K
PP 800#
SPM 56
RPM 75

conn

Vis 59
Wt. 8.7
LCM 2#
conn

A.V.= 122.35

conn

conn
Vis 60
Wt. 9.1
LCM 2#

conn

WOB 42K
PP 840#
SPM 56
RPM 70

ROP (min/ft)
Gamma (API)

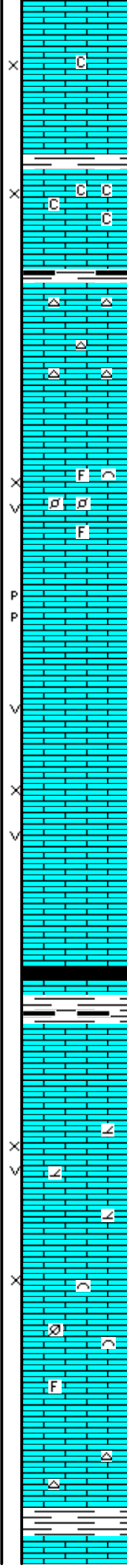
conn

3650

3700

3750

3800



LM; tan to cream, buff, most med xln to gran text, scat fair interxln por, dull yel to no fluor, no gas kicks, ns.

LM; tan to buff, off wh f to med xln, some soft chalky mtx, gd interxln por, dull yel min fluor only, ns.

SH; dk gy, trc blk, platy

LM; tan to cream, buff, f to med xln, rare off wh cht, poor interxln por, ns.

LM; lt to med brn, hd, blocky, scat tan/gy cht, no vis por, ns.

LM; tan to lt brn, foss - med xln, some gran text, gd interpart/interxln w/scat vug por, dull yel min fluor, no stn or odor, no gas kick, ns.

LM; tan to cream, off wh, med xln w/occ p-p and vug por, dull yel min fluor, no stn or odor, ns.

LM; lt brn, tan, med xln w/scat foss mat, occ fusulinids, fair to gd interxln w/some vug por, dull yel to no fluor, no stn or odor, ns.

SH; med to dk gy, trc blk, platy

LM; med gy to med brn, dense, micritic, hd

LM; tan to lt brn, cream, fxln w/occ sucrosic text, partly dolomitic, dull yel min fluor, fair to gd interxln w/some vug por, no stn, ns.

LM; tan to lt brn, fxln, occ foss mat, spotted lt yel min fluor, scat cse opaque spar calc xtals, fair interxln por, no stn or odor, ns.

LM; lt brn, lt gy brn, hd, micritic, rare gy cht, no vis por, ns.

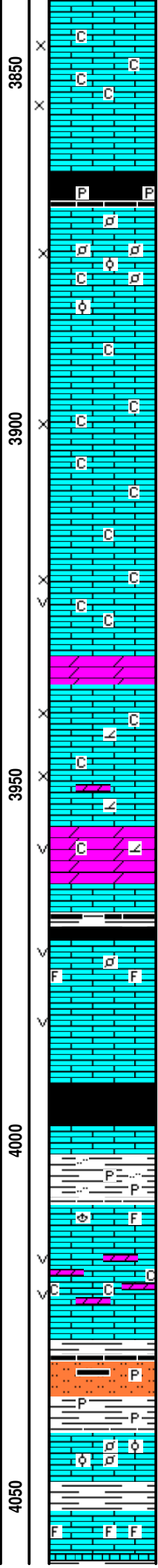
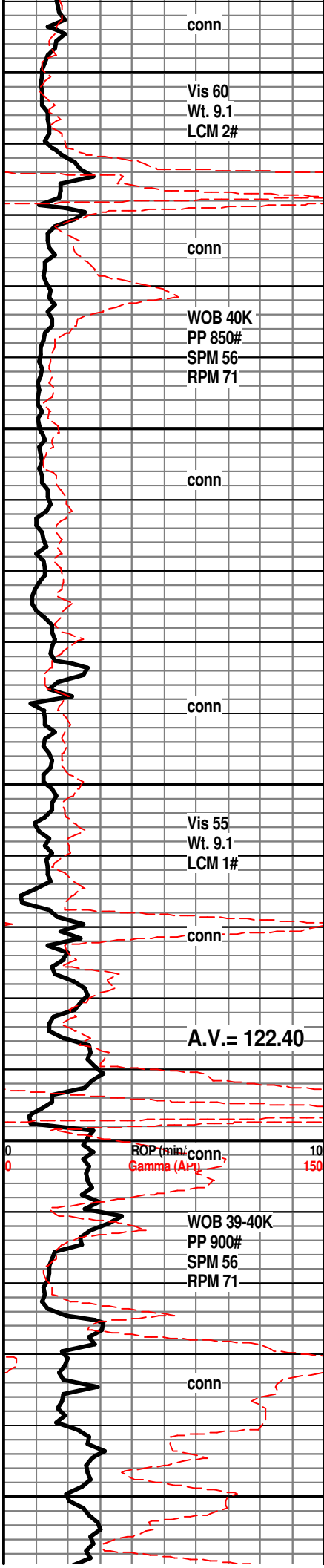
SH; dk gy, trc dk brn, platy

Chrom turned off

Change Extractor
Filter/Gas Test at
Extractor

Chrom. "ON"

TG, G2-C5
0.5 5 50 500



LM; off wh, buff, lt brn, f to med xln, fair interxln por, scat soft chalk and chalky mtx, dull yel min fluor, no stn, ns.

QUEEN HILL SHALE 3864(-1685)

SH; blk, carb ip, platy, scat pyr

LM; tan to cream, buff, f to med xln, scat foss mat - pelletal lmst w/rare small oolites, lt yel min fluor, fair interpart por, scat chalky mtx, no stn or odor, ns.

LM; off wh, buff, med to occ cse xln, abnt spar calc xtals, interbdd soft chalky lmst, fair interxln por, dull yel fluor, no stn, ns.

LM; off wh, buff, tan, f to med xln, scat soft chalk and chalky mtx, fair interpart por, partly dolomitic, dull to rare lt yel min fluor, no stn, ns.

DOL; lt brn, sucrosic, well dev. vug por, soft, dull yel to no fluor, ns.

SH; v. dk gy, some blk, platy

LM; tan to lt brn, fxln w/rare foss mat, interbdd hd tan micrite, scat small vug por ip, dull yel min fluor, no stn or odor, ns.

LM; lt brn, tan, fxln w/scat sucrosic text, dull yel min fluor only, no stn, ns.

HEEBNER SHALE 3993(-1814)

SH; blk, carb, soft to blocky, trc gas

LM; med brn, dense, hd

SH; gy grn, grn, firm, occ silty, pyr ip.

TORONTO 4009(-1830)

LM; lt brn, foss ip, hd, blocky

LM; tan to lt brn, sucrosic w/interbdd dolomite and dolomitic lmst, fair vug por, minor soft chalky mtx, no fluor, no stn or odor, ns.

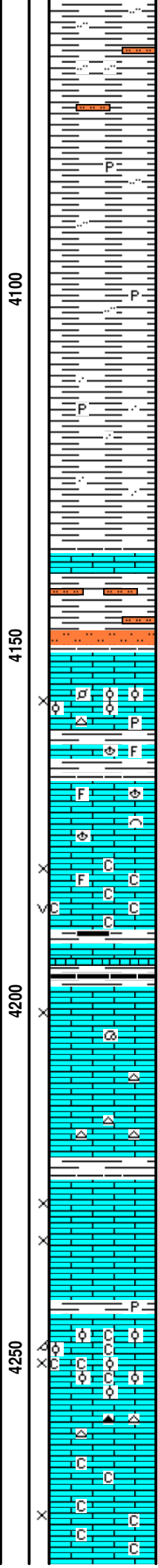
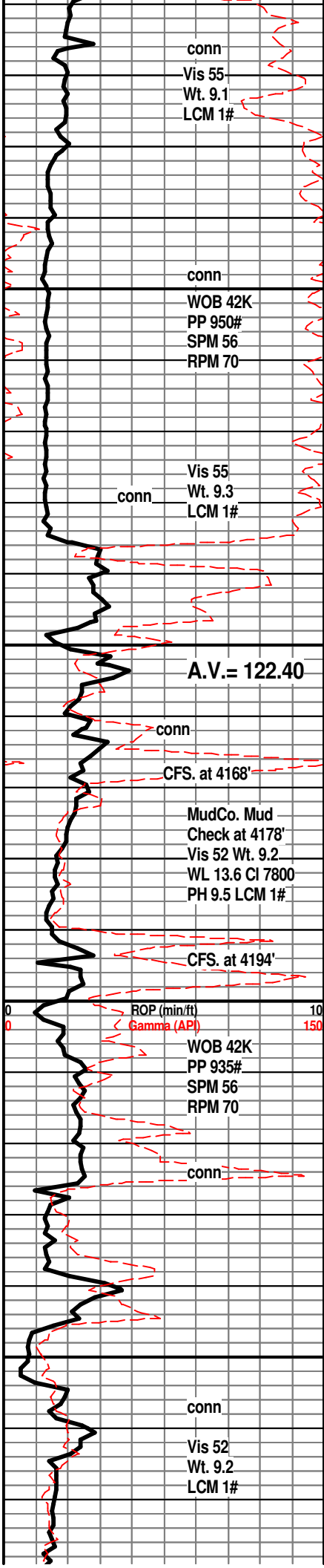
DOUGLAS SHALE 4028(-1849)

SLTST; lt gy, sandy ip, occ mica, soft ip, occ dissem. pyr, trc coaly frags

LM; tan to med brn, v. foss w/occ oolitic and pelletal lmst, scat pyr, well cem, lt yel min fluor, no stn or odor, no gas kick, ns.

LM; med to dk brn, med gy, foss ip, most micritic, hd





SH; lt gy, fiss, silty ip, firm

POOR SAMPLES - MOSTLY UPHOLE SLOUGH - REDBEDS, ETC.

SH; lt to med gy, silty ip, fiss, rarely pyr.

SH; lt to med gy, platy, soft to sticky, some gumbo shale

BROWN LMST. 4136(-1957)

LM; med brn, micritic, dense

SH; grn, gy grn, platy, scat soft sltst.

LANSING 'A' 4151(-1972)

LM; tan to lt brn, foss - oolitic/finely pelletal, scat lrg ooids, poor to fair interpart por, med yel fluor, trc gas bubbles, no vis oil staining, no odor, poor show, trc oolitic pyr cht

SH; med to occ dk gy, foss ip, interbdd hd lmst

LANSING 'B' 4169(-1990)

LM; lt gy to lt brn, foss ip, most well cem, tite

LM; off wh, buff, lt gy, f to med xln, foss ip, much soft chalky and chalky lmst, interbdd lt gy vuggy lmst, dull to lt yel fluor, no vis oil stn, no odor, no sample shows

SH; dk gy, trc blk, platy

LM; tan to buff, off wh, f to med xln, poor to fair interxln por, occ spar calc xtals, lt yel min fluor, no stn or odor, ns.

LM; lt brn, buff, most dense, blocky, scat lt brn to tan cht, no vis por, ns.

LM; lt brn, tan, rare med brn, some mottled text, most med xln to occ gran, lt to med yel fluor, trc blk dead oil/tar on few pcs, no apparent gas kick, no odor

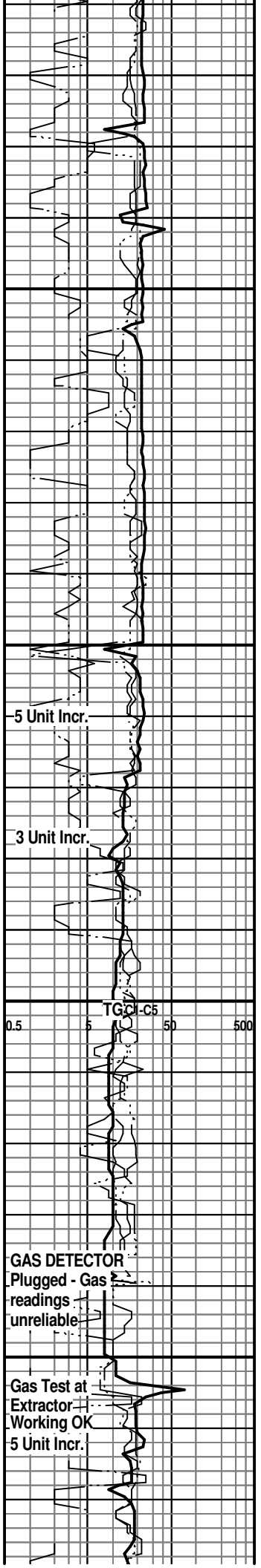
SH; med gy, grn, fiss, occ pyr

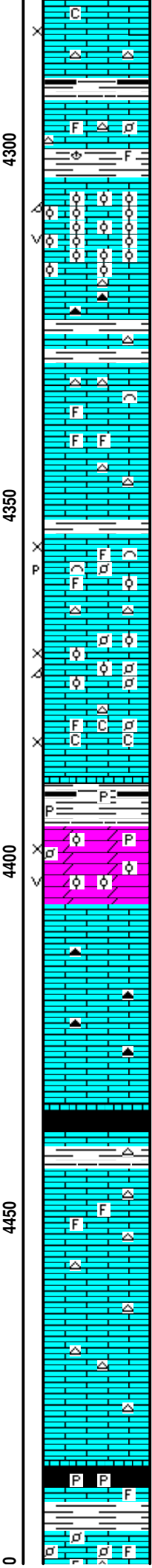
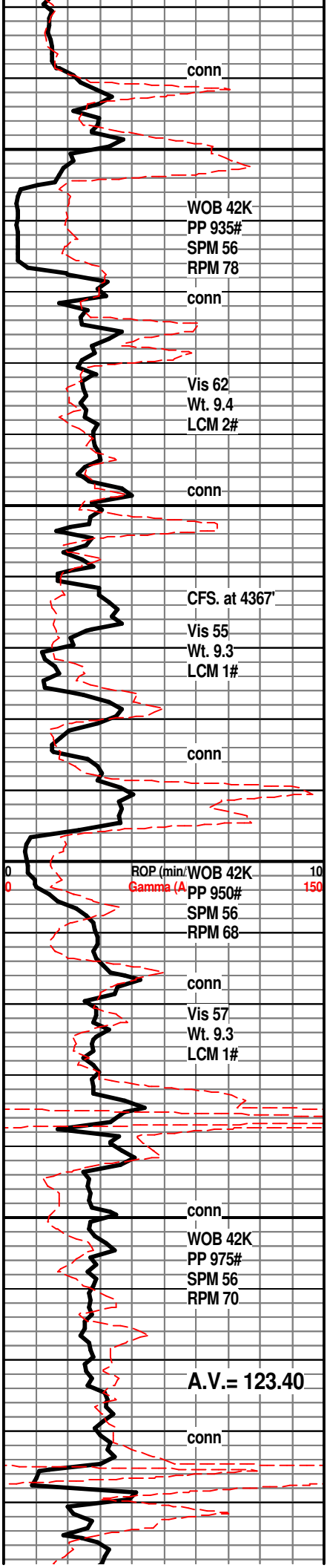
LANSING 'G' POROSITY 4245(-2066)

LM; off wh, wh, buff, foss - oolitic ip, much soft chalky mtx, fair to gd interpart and scat oomoldic por, interbdd cse xln lmst, lt yel min fluor, ns.

LM; lt to med brn, hd, micritic ip, scat dk gy to tan cht, ns.

LM; off wh, wh, med xln, scat cse opaque spar calc xtals, fair interxln por, interbdd chalk and soft chalky





mtx, occ lt yel fluor, no stn or odor, ns.

SH; dk gy - blk, fiss to flakey

LM; med to dk brn, foss ip, dense, occ tan cht

SH; med to dk gy, firm, foss ip.

LANSING/KC. 'H' 4304(-2125)

LM; lt to med brn, rare tan, oolitic, most med size molds, v. gd oomoldic w/scat vug por, some rextalized, dull yel min fluor only, no stn or odor, no gas kick, barren, ns.

LM; med brn, hd, micritic, scat dk gy/smoky cht

SH; grn, gy grn, platy

LM; tan to cream, buff, fxln w/scat well cem foss mat, cherty w/wh and tan cht, poor/no vis interxln por, no stn or odor, ns.

K.C. 'I' ZONE 4354(-2175)

LM; off wh, cream, buff, foss to finely oolitic, scat hash, fair to poor interpart por, some p-p por, trc chalky mtx, lt yel min fluor, no stn or odor, no vis gas

LM; tan to off wh, foss, finely oolitic/pelletal ip, scat gd oomoldic por, minor chalky mtx, scat lt yel fluor, no stn or odor, no gas kick, ns.

LM; off wh, tan, buff, fxln w/occ foss mat, poor interpart por, chalky ip, dull yel fluor, no stn, ns.

SH; dk gy, trc blk, platy, occ pyr

K.C. 'J' DENNIS 4396(-2217)

DOL; lt brn, tan, oolitic ip, most sucrosic dolomite w/v. gd interxln and scat vug por, some rextalized, no stn or odor, no gas kick, barren, ns.

LM; tan to cream, most dense, micritic, scat dk brn to amber cht, no vis por, ns.

STARK SHALE 4435(-2256)

SH; blk, platy, carb ip.

SWOPE 4443(-2264)

LM; tan to lt brn, fxln, occ foss mat - well cem, no vis por, minor off wh to gy cht, no fluor, ns.

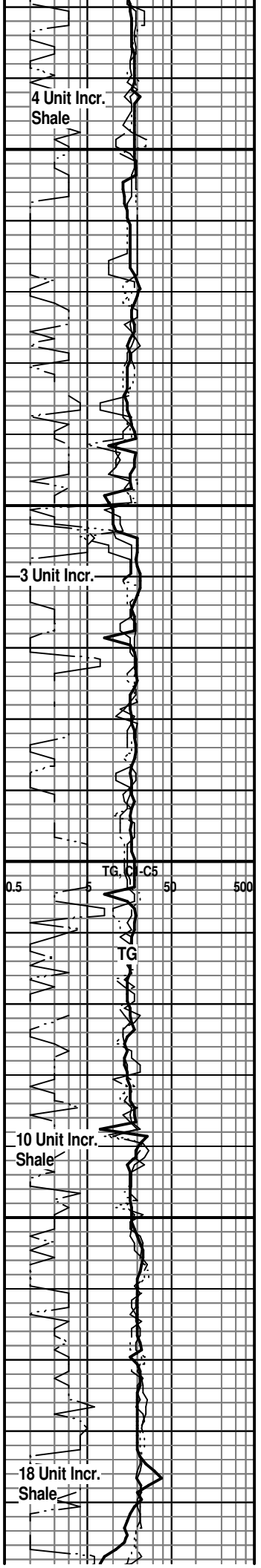
LM; off wh, cream, f to occ med xln, most well cem, scat gy to off wh cht, no vis por, no fluor, ns.

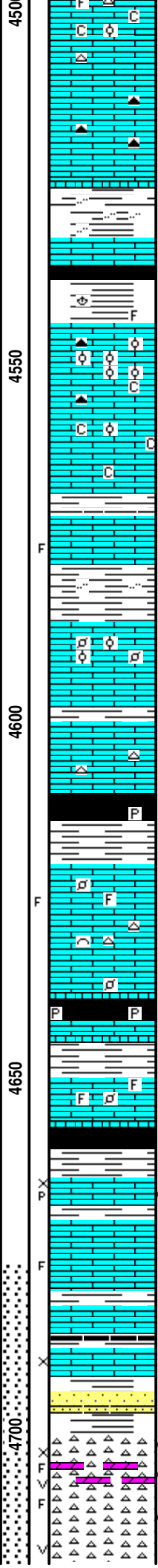
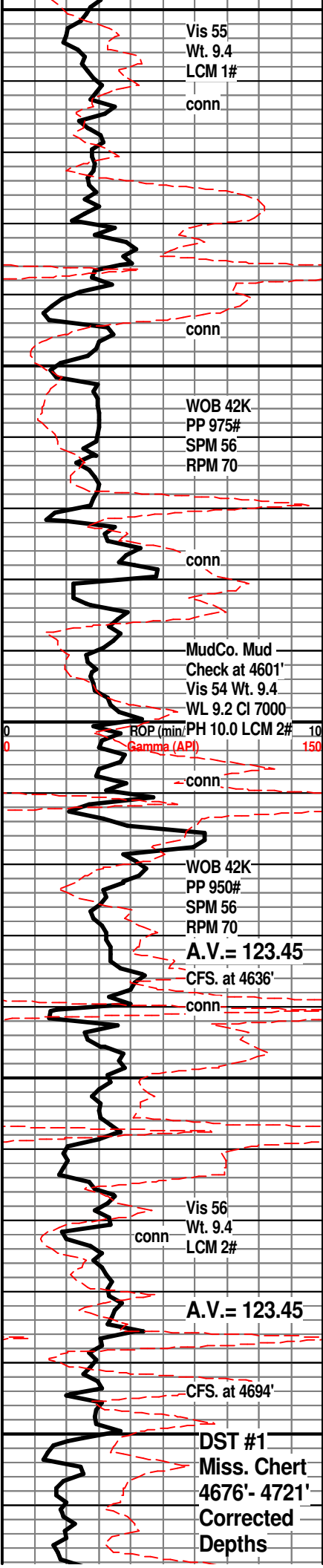
SH; blk, carb ip, platy, occ gassy, pyr ip.

LM; lt to med brn, foss, tite

HERTHA 4494(-2315)

LM; tan to lt brn. buff. foss w/scat small foss pellets.





LM; tan to dk brn, trc soft chalky mtx, interbdd tan to gy cht, lt yel min fluor, poor interpart por, no stn or odor, ns.

LM; med brn, rarely dk brn, scat hd smoky cht, dense, blocky, no vis por, ns.

BASE KANSAS CITY 4525(-2346)
SH; varic, gy, grn, trc rust red, maroon, silty ip.
LM; lt to med brn, trc maroon, hd, blocky, tite
SH; dk gy/blk, interbdd varic shales, platy to flakey, foss ip.

PLEASANTON 4544(-2365)
LM; lt to med brn, hd, micritic, occ interbdd foss mat/occ brn well cem oolites, scat gy to smoky cht, no vis por, ns.
LM; tan to buff, off wh, cse xln, most well cem, minor soft chalky mtx, dull yel fluor, no stn or odor, ns.

MARMATON 4571(-2392)
LM; lt brn, tan, scat pale grn tint, trc frags w/spar calc, lt yel min fluor, ns.
LM; tan to lt brn, foss ip w/scat well cem oolites and foss mat, occ spar calc xtals, no vis por, dull yel fluor, ns.
LM; tan to lt brn, fxln, occ foss, most dense, no vis por, scat off wh to gy cht, no fluor, no stn or odor, ns.

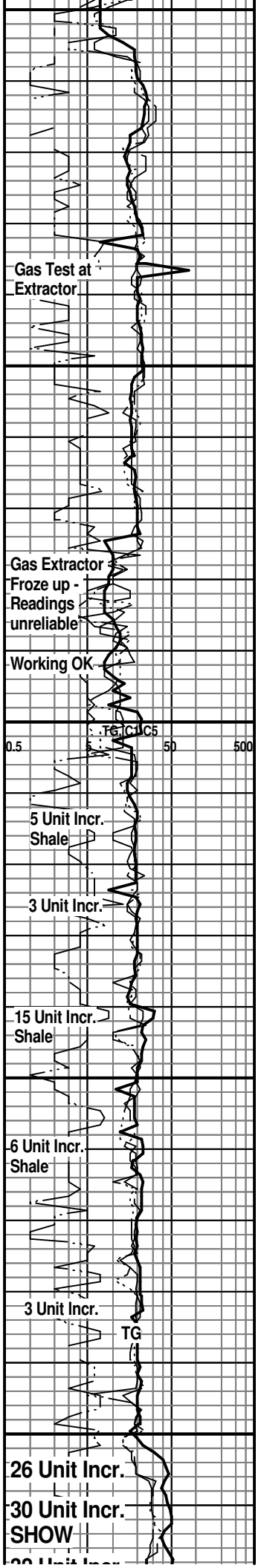
SH; dk gy-blk, platy, rarely pyr

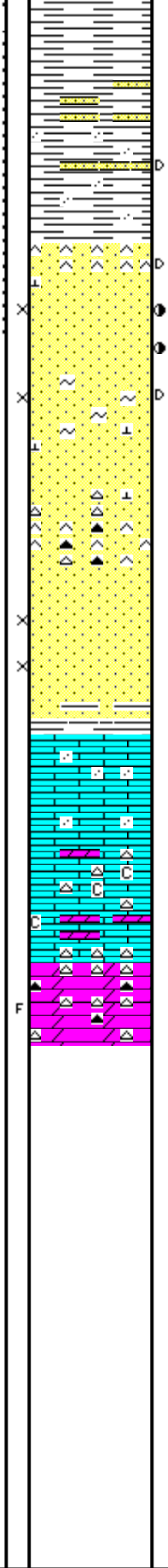
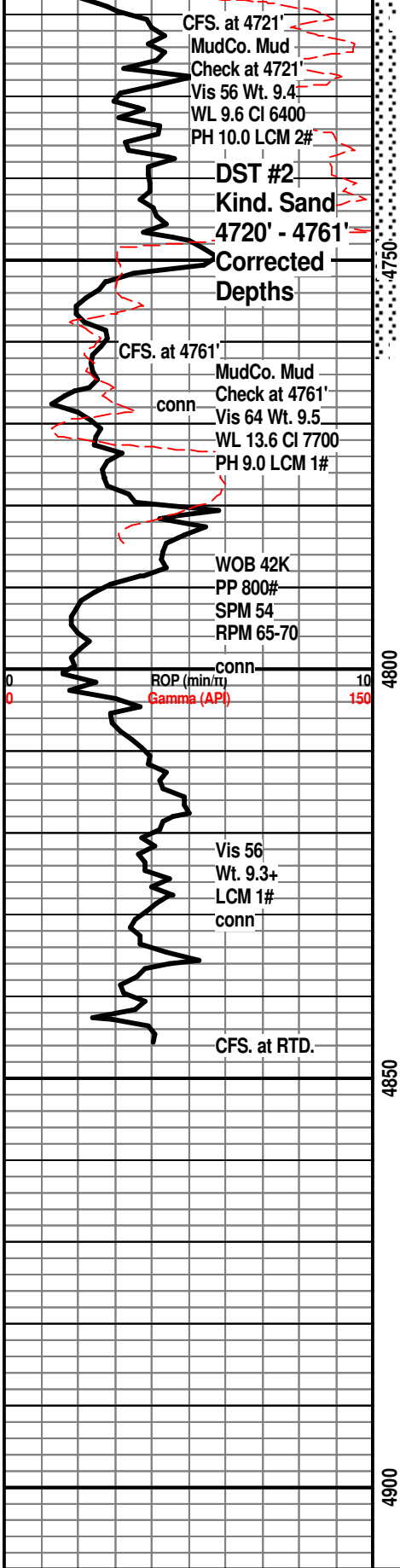
PAWNEE 4620(-2441)
LM; tan to lt brn, fxln, much dense micrite, interbdd foss lmst - most well cem, trc frags, occ lt to med yel fluor, poor to no vis por, no stn or odor, ns.
LM; tan to buff, lt gy brn, argil ip, scat small foss pellets, tite
SH; blk, carb, trc gas, occ pyr

LM; lt to med brn, scat well cem foss, some dense - micritic, trc frags w/spar calc, dull yel fluor, no stn or odor, no gas kick, ns.

CHEROKEE SHALE 4657(-2478)
SH; blk, dk gy, some varic, platy
LM; tan to lt brn, fxln, few pcs w/spotted dk brn live oil stn, poor interxn w/p-p por, lt golden yel fluor, no odor, no gas kick
LM; med brn, hd, most micritic, scat spar calc xtals, poss frags, dull yel fluor, scat blk tar/dead oil, no live shows, no odor
SH; dk gy, trc blk, platy
LM; lt brn, tan, fxln, poor interxn por, trc blk dead tar/gils, dull/ lt yel fluor, no odor, no kick
SH; varic, platy, trc grn weath lmst, f gr qtz ss with dk brn oil sat, med yel fluor

MISSISSIPPI CHERT 4700(-2521)
CHT; wh, off wh, lt gy, fresh and trip, some dolomitic cht, frags w/scat fair trip/vug por, med to occ brite yel fluor, sptd. med brn w/blk dead oil, Trc. F.O., gas bubbles, v. faint odor
CHT; wh, off wh, fresh/trip, med yel fluor, scat frags, blk tar/gils, pred fresh chert, faint odor





KINDERHOOK SHALE 4718(-2539)
DST #1: Miss. Chert 4676' - 4721'
Corrected Depths to LOG
SH; grn, sea grn, some partly waxy, interbdd vf to f gr shaly ss strngs, platy

SH; grn, gy grn, platy, interbdd vf to f gr. qtz ss w/blk dead oil/gilsonite, some sandy sh

KINDERHOOK SAND 4748(-2569)
SS; lt gy, vf to f gr, hd, siliceous, no por, scat gil
SS; lt gy, clr, most f gr qtz, clusters w/some med/cse loose gr, fair to occ gd intergran por, much blk tar/gils, med brn live oil stn w/SSFO, few gas bubbles, lt to med yel fluor, no odor

DST #2: Kinderhook SS 4720'- 4761'
SS; clr, pale grn, lt gy, pred f gr qtz, clusters, scat dk blk barry flakes, minor glau, fair to occ gd intergran por, calc cmt, interbdd med gr clr qtz, trc. live oil stn, lt yel fluor, no odor, no gas kick

SS; off wh, pale yel, vf to f gr, most siliceous - very hd, interbdd rusty red/mauve fresh cherts, no vis por, ns.

SS; clr, wh, f to occ med gr qtz, gd intergran por, clusters, no fluor, no stn or odor, barren, no gas kick

VIOLA 4808(-2629)
LM; rose red, off wh, v. sandy, much vf to g gr qtz in lmst mtx, well cem, blocky, no vis por, ns.

LM; wh, off wh, f to med xln/party sucrosic text, cherty w/transl, wh to lt dove gy cht, minor chalky mtx, no fluor, no stn or odor, no gas kick

DOL; off wh, wh, sucrosic, occ soft chalky mtx, abnt off wh, wh, org and gy cht, all fresh cht, trc frags, dull yel fluor, no stn or odor, ns.

RTD. 4850' at 4:15 PM. 1/4/2013

LTD. 4850'

Halliburton DIL, NEU/DEN, Microlog, Sonic

NOTE: This log was shifted upward by 4' for correlation purposes with the Halliburton LOGS.

