



## DRILL STEM TEST REPORT

Prepared For: **John Roy Evans Oil Co LLC**

405 4th ST Box 385  
Claffin KS 67525

ATTN: Jim Musgrove

### **Bieberie #10**

#### **32-17s-12w Barton,KS**

Start Date: 2013.01.06 @ 16:00:00

End Date: 2013.01.06 @ 21:26:00

Job Ticket #: 51547                      DST #: 1

Trilobite Testing, Inc

PO Box 362 Hays, KS 67601

ph: 785-625-4778 fax: 785-625-5620

Printed: 2013.01.10 @ 10:55:55



**TRILOBITE TESTING, INC**

# DRILL STEM TEST REPORT

John Roy Evans Oil Co LLC

**32-17s-12w Barton, KS**

405 4th ST Box 385  
Clafin KS 67525

**Bieberie #10**

Job Ticket: 51547

**DST#: 1**

ATTN: Jim Musgrove

Test Start: 2013.01.06 @ 16:00:00

## GENERAL INFORMATION:

Formation: **LKC " A-C "**

Deviated: No Whipstock: 1822.00 ft (KB)

Time Tool Opened: 17:31:20

Time Test Ended: 21:26:00

Test Type: Conventional Bottom Hole (Initial)

Tester: Jim Svaty

Unit No: 41

**Interval: 3079.00 ft (KB) To 3130.00 ft (KB) (TVD)**

Reference Elevations: 1822.00 ft (KB)

Total Depth: 3130.00 ft (KB) (TVD)

1815.00 ft (CF)

Hole Diameter: 7.88 inches Hole Condition: Fair

KB to GR/CF: 7.00 ft

**Serial #: 8734**

**Inside**

Press @ RunDepth: 32.70 psig @ 3095.00 ft (KB)

Capacity: 8000.00 psig

Start Date: 2013.01.06

End Date:

2013.01.06

Last Calib.:

2013.01.06

Start Time: 16:00:01

End Time:

21:25:20

Time On Btm:

2013.01.06 @ 17:31:00

Time Off Btm:

2013.01.06 @ 20:02:20

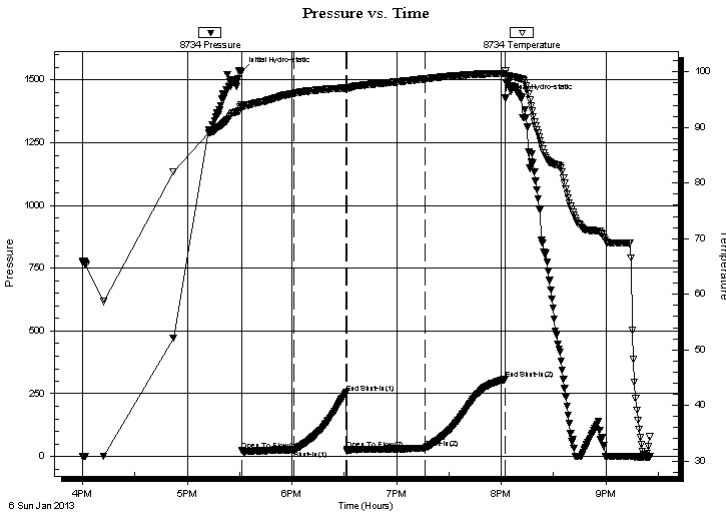
**TEST COMMENT:** 30-IFP- BOB in 15 min.

30-ISIP- No Blow

45-FFP- Surface Blow Building to 6 1/2"

45-FSIP- No Blow

## PRESSURE SUMMARY



Time (Min.)	Pressure (psig)	Temp (deg F)	Annotation
0	1534.76	93.99	Initial Hydro-static
1	23.78	93.50	Open To Flow (1)
31	24.63	96.14	Shut-In(1)
61	253.82	97.09	End Shut-In(1)
61	28.61	97.00	Open To Flow (2)
106	32.70	98.74	Shut-In(2)
152	307.46	99.74	End Shut-In(2)
152	1428.26	100.27	Final Hydro-static

## Recovery

Length (ft)	Description	Volume (bbl)
30.00	MUD 100%	0.42
0.00	150 GIP	0.00

## Gas Rates

	Choke (inches)	Pressure (psig)	Gas Rate (Mcf/d)





**TRILOBITE  
TESTING, INC**

# DRILL STEM TEST REPORT

**TOOL DIAGRAM**

John Roy Evans Oil Co LLC

**32-17s-12w Barton,KS**

405 4th ST Box 385  
Claflin KS 67525

**Bieberie #10**

Job Ticket: 51547

**DST#: 1**

ATTN: Jim Musgrove

Test Start: 2013.01.06 @ 16:00:00

## Tool Information

Drill Pipe:	Length: 3067.00 ft	Diameter: 3.80 inches	Volume: 43.02 bbl	Tool Weight: 2500.00 lb
Heavy Wt. Pipe:	Length: 0.00 ft	Diameter: 2.75 inches	Volume: 0.00 bbl	Weight set on Packer: 25000.00 lb
Drill Collar:	Length: 0.00 ft	Diameter: 2.25 inches	Volume: 0.00 bbl	Weight to Pull Loose: 38000.00 lb
			<u>Total Volume: 43.02 bbl</u>	Tool Chased 0.00 ft
Drill Pipe Above KB:	8.00 ft			String Weight: Initial 32000.00 lb
Depth to Top Packer:	3079.00 ft			Final 32000.00 lb
Depth to Bottom Packer:	ft			
Interval between Packers:	51.00 ft			
Tool Length:	71.00 ft			
Number of Packers:	2	Diameter: 6.75 inches		

Tool Comments:

Tool Description	Length (ft)	Serial No.	Position	Depth (ft)	Accum. Lengths
------------------	-------------	------------	----------	------------	----------------

Shut In Tool	5.00			3064.00	
Hydraulic tool	5.00			3069.00	
Packer	5.00			3074.00	20.00 Bottom Of Top Packer
Packer	5.00			3079.00	
Stubb	1.00			3080.00	
Perforations	14.00			3094.00	
Change Over Sub	1.00			3095.00	
Recorder	0.00	8734	Inside	3095.00	
Recorder	0.00	8322	Outside	3095.00	
Blank Spacing	31.00			3126.00	
Change Over Sub	1.00			3127.00	
Bullnose	3.00			3130.00	51.00 Bottom Packers & Anchor

**Total Tool Length: 71.00**



**TRILOBITE  
TESTING, INC**

# DRILL STEM TEST REPORT

**FLUID SUMMARY**

John Roy Evans Oil Co LLC

**32-17s-12w Barton,KS**

405 4th ST Box 385  
Claflin KS 67525

**Bieberie #10**

Job Ticket: 51547

**DST#: 1**

ATTN: Jim Musgrove

Test Start: 2013.01.06 @ 16:00:00

## Mud and Cushion Information

Mud Type: Gel Chem

Cushion Type:

Oil API:

deg API

Mud Weight: 9.00 lb/gal

Cushion Length:

ft

Water Salinity:

ppm

Viscosity: 54.00 sec/qt

Cushion Volume:

bbbl

Water Loss: 8.70 in<sup>3</sup>

Gas Cushion Type:

Resistivity: ohm.m

Gas Cushion Pressure:

psig

Salinity: 6500.00 ppm

Filter Cake: inches

## Recovery Information

Recovery Table

Length ft	Description	Volume bbl
30.00	MUD 100%	0.421
0.00	150 GIP	0.000

Total Length: 30.00 ft      Total Volume: 0.421 bbl

Num Fluid Samples: 0

Num Gas Bombs: 0

Serial #:

Laboratory Name:

Laboratory Location:

Recovery Comments:

Serial #: 8734

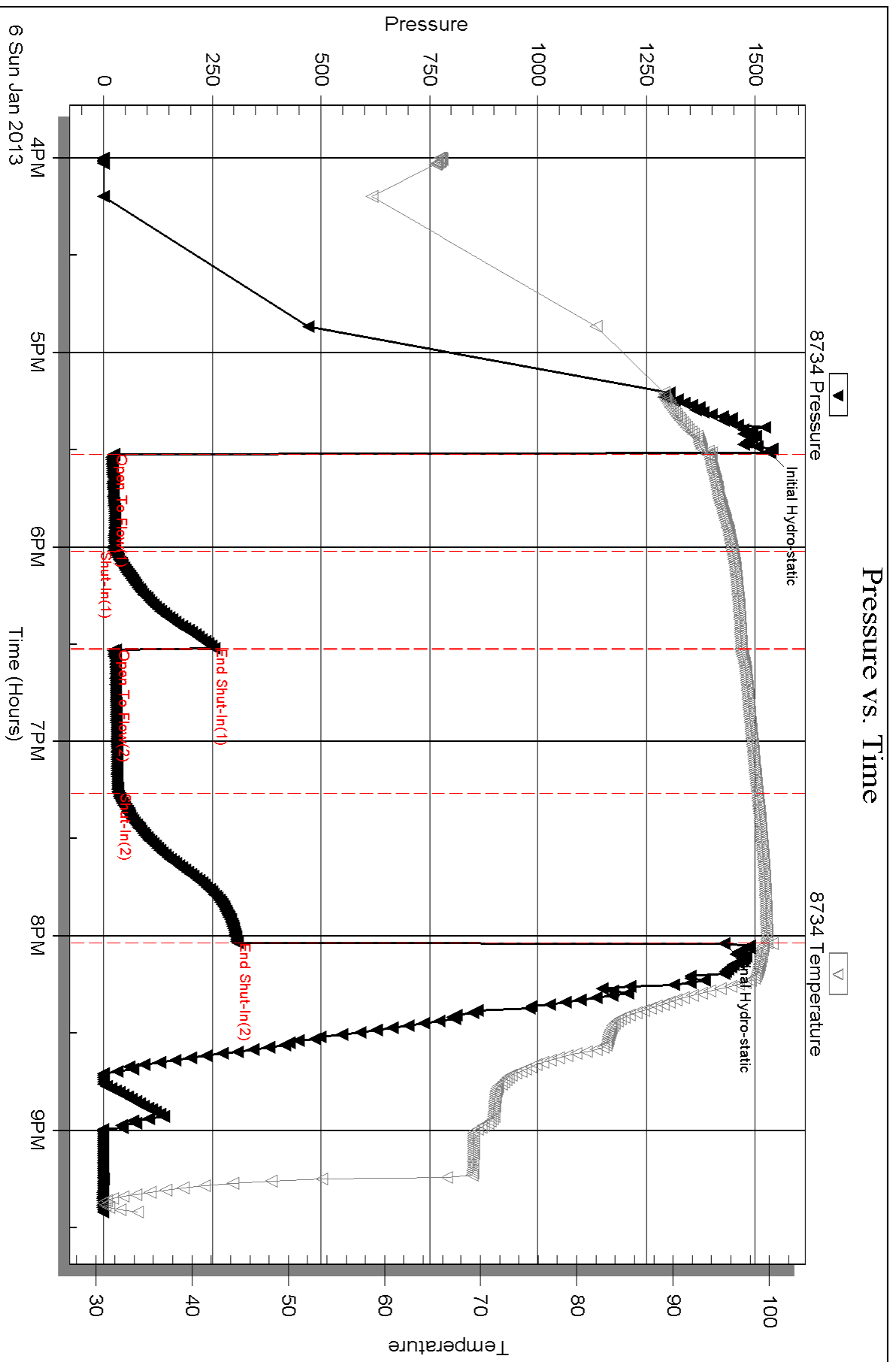
Inside

John Roy Evans Oil Co LLC

Bieberie #10

DST Test Number: 1

### Pressure vs. Time

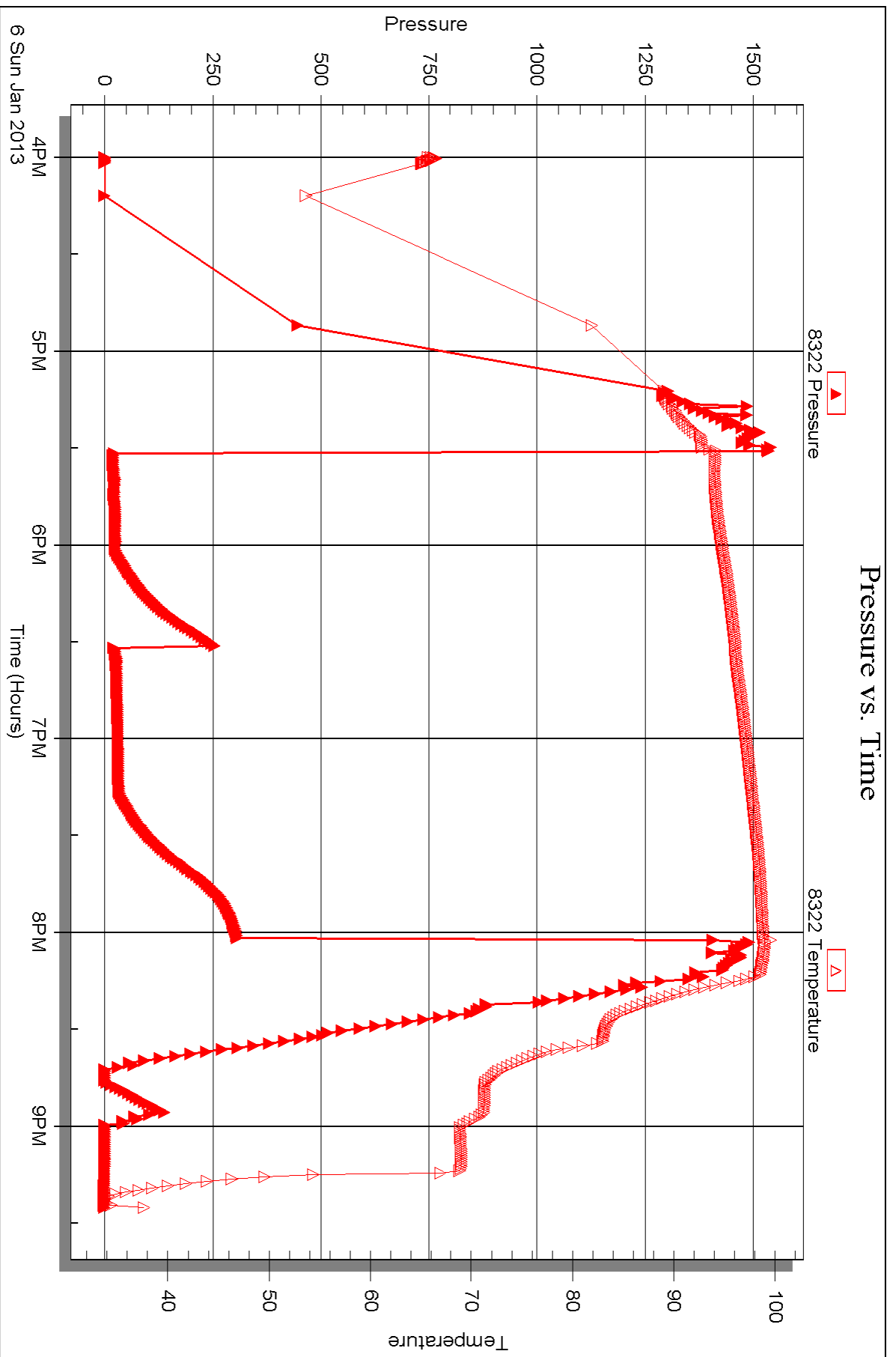


Serial #: 8322

Outside John Roy Evans Oil Co LLC

Bieberie #10

DST Test Number: 1





## DRILL STEM TEST REPORT

Prepared For: **John Roy Evans Oil Co LLC**

405 4th ST Box 385  
Claffin KS 67525

ATTN: Jim Musgrove

### **Bieberie #10**

#### **32-17s-12w Barton,KS**

Start Date: 2013.01.07 @ 03:39:00

End Date: 2013.01.07 @ 08:56:00

Job Ticket #: 51548                      DST #: 2

Trilobite Testing, Inc

PO Box 362 Hays, KS 67601

ph: 785-625-4778 fax: 785-625-5620

Printed: 2013.01.10 @ 10:55:13





**TRILOBITE  
TESTING, INC**

# DRILL STEM TEST REPORT

John Roy Evans Oil Co LLC

**32-17s-12w Barton,KS**

405 4th ST Box 385  
Claflin KS 67525

**Bieberie #10**

Job Ticket: 51548

**DST#: 2**

ATTN: Jim Musgrove

Test Start: 2013.01.07 @ 03:39:00

## GENERAL INFORMATION:

Formation: **LKC " D-F "**

Deviated: No Whipstock: 1822.00 ft (KB)

Time Tool Opened: 05:19:10

Time Test Ended: 08:56:00

Test Type: Conventional Bottom Hole (Reset)

Tester: Jim Svaty

Unit No: 41

**Interval: 3130.00 ft (KB) To 3172.00 ft (KB) (TVD)**

Reference Elevations: 1822.00 ft (KB)

Total Depth: 3172.00 ft (KB) (TVD)

1815.00 ft (CF)

Hole Diameter: 7.88 inches Hole Condition: Fair

KB to GR/CF: 7.00 ft

**Serial #: 8734**

**Inside**

Press @ Run Depth: 95.05 psig @ 3136.00 ft (KB)

Capacity: 8000.00 psig

Start Date: 2013.01.07

End Date:

2013.01.07

Last Calib.: 2013.01.07

Start Time: 03:39:01

End Time:

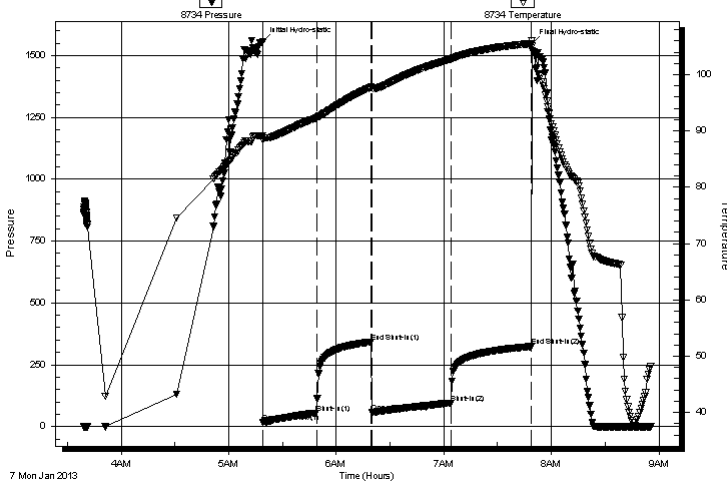
08:55:20

Time On Btm: 2013.01.07 @ 05:19:00

Time Off Btm: 2013.01.07 @ 07:49:00

**TEST COMMENT:** 30-IFP- BOB in 19 min.  
30-ISIP- No Blow  
45-FFP- BOB in 37 min.  
45-FSIP- No Blow

Pressure vs. Time



## PRESSURE SUMMARY

Time (Min.)	Pressure (psig)	Temp (deg F)	Annotation
0	1557.13	89.16	Initial Hydro-static
1	16.33	88.49	Open To Flow (1)
30	54.88	92.29	Shut-In(1)
61	341.85	97.81	End Shut-In(1)
61	55.95	97.70	Open To Flow (2)
105	95.05	102.75	Shut-In(2)
150	323.21	105.53	End Shut-In(2)
150	1548.24	106.09	Final Hydro-static

## Recovery

Length (ft)	Description	Volume (bbl)
140.00	MCW 10% m 90% w	1.96

\* Recovery from multiple tests

## Gas Rates

Choke (inches)	Pressure (psig)	Gas Rate (Mcf/d)





**TRILOBITE  
TESTING, INC**

# DRILL STEM TEST REPORT

**TOOL DIAGRAM**

John Roy Evans Oil Co LLC

**32-17s-12w Barton,KS**

405 4th ST Box 385  
Claflin KS 67525

**Bieberie #10**

Job Ticket: 51548

**DST#: 2**

ATTN: Jim Musgrove

Test Start: 2013.01.07 @ 03:39:00

## Tool Information

Drill Pipe:	Length: 3130.00 ft	Diameter: 3.80 inches	Volume: 43.91 bbl	Tool Weight: 2500.00 lb
Heavy Wt. Pipe:	Length: 0.00 ft	Diameter: 2.75 inches	Volume: 0.00 bbl	Weight set on Packer: 25000.00 lb
Drill Collar:	Length: 0.00 ft	Diameter: 2.25 inches	Volume: 0.00 bbl	Weight to Pull Loose: 36000.00 lb
			<u>Total Volume: 43.91 bbl</u>	Tool Chased 0.00 ft
Drill Pipe Above KB:	20.00 ft			String Weight: Initial 34000.00 lb
Depth to Top Packer:	3130.00 ft			Final 34000.00 lb
Depth to Bottom Packer:	ft			
Interval between Packers:	42.00 ft			
Tool Length:	62.00 ft			
Number of Packers:	2	Diameter: 6.75 inches		

Tool Comments:

Tool Description	Length (ft)	Serial No.	Position	Depth (ft)	Accum. Lengths
------------------	-------------	------------	----------	------------	----------------

Shut In Tool	5.00			3115.00	
Hydraulic tool	5.00			3120.00	
Packer	5.00			3125.00	20.00 Bottom Of Top Packer
Packer	5.00			3130.00	
Stubb	1.00			3131.00	
Perforations	4.00			3135.00	
Change Over Sub	1.00			3136.00	
Recorder	0.00	8734	Inside	3136.00	
Recorder	0.00	8322	Outside	3136.00	
Blank Spacing	32.00			3168.00	
Change Over Sub	1.00			3169.00	
Bullnose	3.00			3172.00	42.00 Bottom Packers & Anchor

**Total Tool Length: 62.00**



**TRILOBITE  
TESTING, INC**

# DRILL STEM TEST REPORT

**FLUID SUMMARY**

John Roy Evans Oil Co LLC

**32-17s-12w Barton,KS**

405 4th ST Box 385  
Claflin KS 67525

**Bieberie #10**

Job Ticket: 51548

**DST#: 2**

ATTN: Jim Musgrove

Test Start: 2013.01.07 @ 03:39:00

## Mud and Cushion Information

Mud Type: Gel Chem

Cushion Type:

Oil API:

deg API

Mud Weight: 9.00 lb/gal

Cushion Length:

ft

Water Salinity:

125000 ppm

Viscosity: 54.00 sec/qt

Cushion Volume:

bbbl

Water Loss: 8.69 in<sup>3</sup>

Gas Cushion Type:

Resistivity: ohm.m

Gas Cushion Pressure:

psig

Salinity: 6500.00 ppm

Filter Cake: inches

## Recovery Information

Recovery Table

Length ft	Description	Volume bbbl
140.00	MCW 10%m 90%w	1.964

Total Length: 140.00 ft

Total Volume: 1.964 bbl

Num Fluid Samples: 0

Num Gas Bombs: 0

Serial #:

Laboratory Name:

Laboratory Location:

Recovery Comments: .126 @ 38

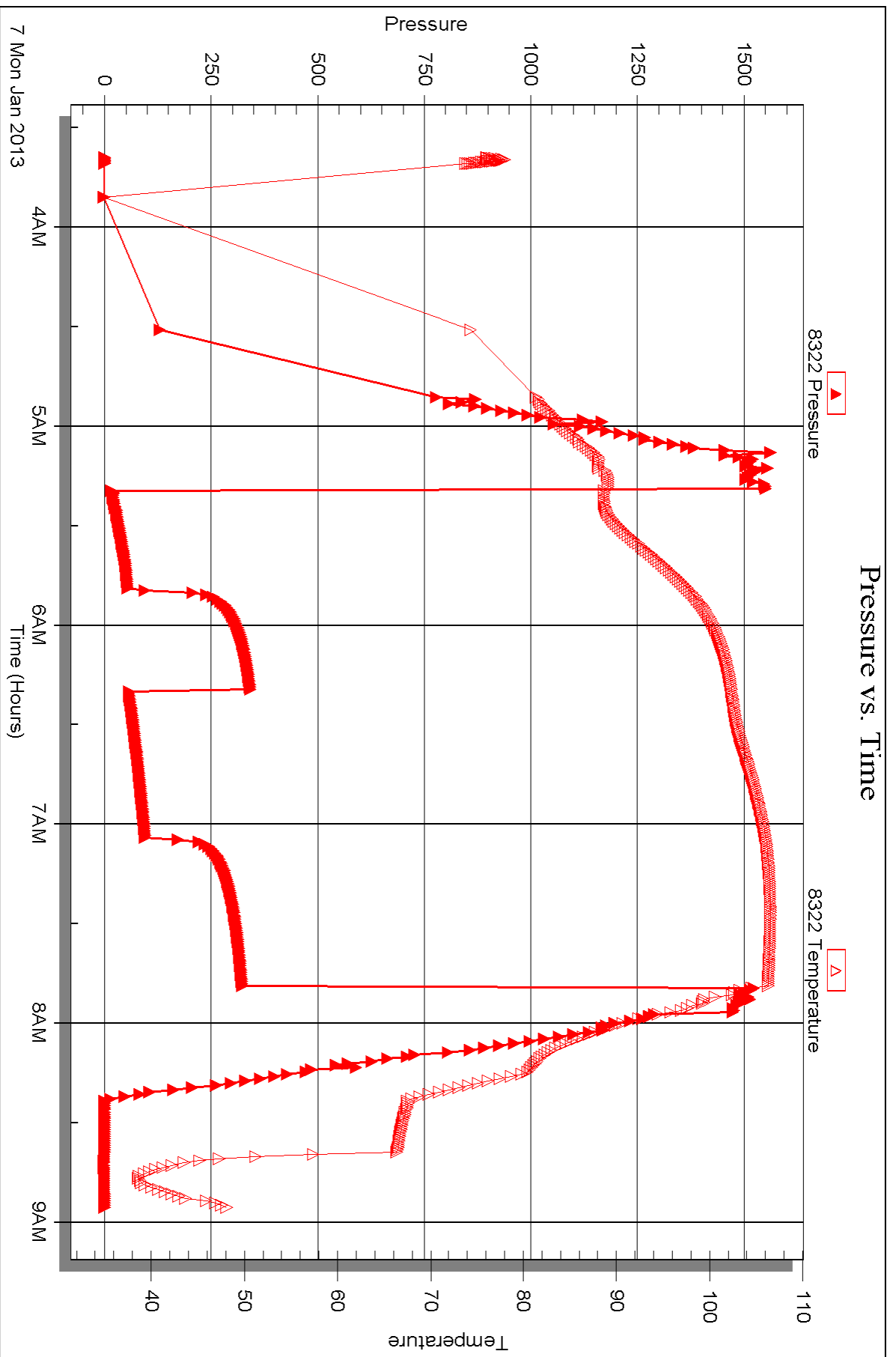


Serial #: 8322

Outside John Roy Evans Oil Co LLC

Bieberie#10

DST Test Number: 2





## DRILL STEM TEST REPORT

Prepared For: **John Roy Evans Oil Co LLC**

405 4th ST Box 385  
Claffin KS 67525

ATTN: Jim Musgrove

### **Bieberie #10**

#### **32-17s-12w Barton,KS**

Start Date: 2013.01.08 @ 01:11:00

End Date: 2013.01.08 @ 06:21:00

Job Ticket #: 51549                      DST #: 3

Trilobite Testing, Inc  
PO Box 362 Hays, KS 67601  
ph: 785-625-4778 fax: 785-625-5620

Printed: 2013.01.10 @ 10:54:36

John Roy Evans Oil Co LLC  
32-17s-12w Barton,KS  
Bieberie #10  
DST # 3  
Arbuckle  
2013.01.08



**TRILOBITE TESTING, INC**

# DRILL STEM TEST REPORT

John Roy Evans Oil Co LLC

**32-17s-12w Barton, KS**

405 4th ST Box 385  
Clafin KS 67525

**Bieberie #10**

Job Ticket: 51549

**DST#: 3**

ATTN: Jim Musgrove

Test Start: 2013.01.08 @ 01:11:00

## GENERAL INFORMATION:

Formation: **Arbuckle**

Deviated: No Whipstock: 1822.00 ft (KB)

Time Tool Opened: 02:53:30

Time Test Ended: 06:21:00

Test Type: Conventional Bottom Hole (Reset)

Tester: Jim Svaty

Unit No: 41

**Interval: 3320.00 ft (KB) To 3350.00 ft (KB) (TVD)**

Reference Elevations: 1822.00 ft (KB)

Total Depth: 3350.00 ft (KB) (TVD)

1815.00 ft (CF)

Hole Diameter: 7.88 inches Hole Condition: Fair

KB to GR/CF: 7.00 ft

**Serial #: 8322 Outside**

Press @ RunDepth: 13.01 psig @ 3321.00 ft (KB)

Capacity: 8000.00 psig

Start Date: 2013.01.08

End Date:

2013.01.08

Last Calib.:

2013.01.08

Start Time: 01:11:01

End Time:

06:20:30

Time On Btm:

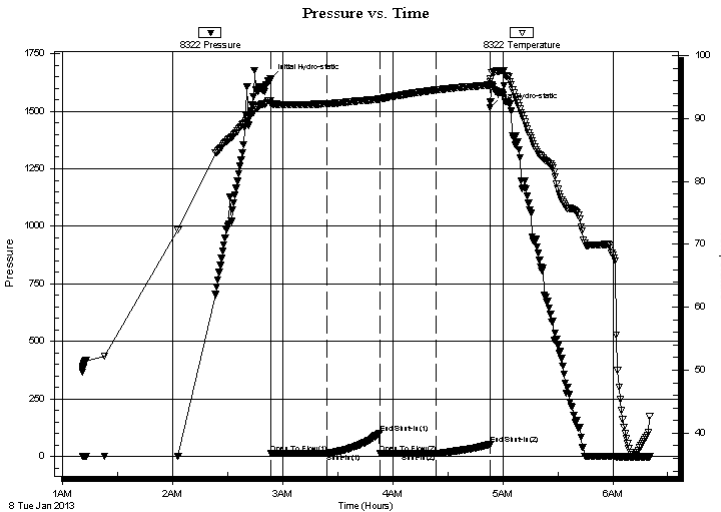
2013.01.08 @ 02:53:20

Time Off Btm:

2013.01.08 @ 04:53:10

**TEST COMMENT:** 30-IFP- Very Weak Surface Blow  
30-ISIP- No Blow  
30-FFP- Very Weak Surface Blow  
30-FSIP- No Blow

## PRESSURE SUMMARY



Time (Min.)	Pressure (psig)	Temp (deg F)	Annotation
0	1640.42	92.86	Initial Hydro-static
1	12.75	92.32	Open To Flow (1)
31	13.07	92.36	Shut-In(1)
60	102.93	93.10	End Shut-In(1)
60	13.56	93.08	Open To Flow (2)
90	13.01	94.53	Shut-In(2)
120	50.70	95.35	End Shut-In(2)
120	1516.27	95.91	Final Hydro-static

## Recovery

Length (ft)	Description	Volume (bbl)
1.00	OCM 15%o 85%m	0.01

## Gas Rates

Choke (inches)	Pressure (psig)	Gas Rate (Mcf/d)

\* Recovery from multiple tests





**TRILOBITE  
TESTING, INC**

# DRILL STEM TEST REPORT

**TOOL DIAGRAM**

John Roy Evans Oil Co LLC

**32-17s-12w Barton,KS**

405 4th ST Box 385  
Clafin KS 67525

**Bieberie #10**

Job Ticket: 51549

**DST#: 3**

ATTN: Jim Musgrove

Test Start: 2013.01.08 @ 01:11:00

## Tool Information

Drill Pipe:	Length: 3320.00 ft	Diameter: 3.80 inches	Volume: 46.57 bbl	Tool Weight: 2500.00 lb
Heavy Wt. Pipe:	Length: 0.00 ft	Diameter: 2.75 inches	Volume: 0.00 bbl	Weight set on Packer: 25000.00 lb
Drill Collar:	Length: 0.00 ft	Diameter: 2.25 inches	Volume: 0.00 bbl	Weight to Pull Loose: 38000.00 lb
			<u>Total Volume: 46.57 bbl</u>	Tool Chased 0.00 ft
Drill Pipe Above KB:	20.00 ft			String Weight: Initial 35000.00 lb
Depth to Top Packer:	3320.00 ft			Final 35000.00 lb
Depth to Bottom Packer:	ft			
Interval between Packers:	30.00 ft			
Tool Length:	50.00 ft			
Number of Packers:	2	Diameter: 6.75 inches		

Tool Comments:

Tool Description	Length (ft)	Serial No.	Position	Depth (ft)	Accum. Lengths
------------------	-------------	------------	----------	------------	----------------

Shut In Tool	5.00			3305.00	
Hydraulic tool	5.00			3310.00	
Packer	5.00			3315.00	20.00 Bottom Of Top Packer
Packer	5.00			3320.00	
Stubb	1.00			3321.00	
Recorder	0.00	8734	Inside	3321.00	
Recorder	0.00	8322	Outside	3321.00	
Perforations	26.00			3347.00	
Bullnose	3.00			3350.00	30.00 Bottom Packers & Anchor
<b>Total Tool Length:</b>	<b>50.00</b>				



**TRILOBITE  
TESTING, INC**

# DRILL STEM TEST REPORT

**FLUID SUMMARY**

John Roy Evans Oil Co LLC

**32-17s-12w Barton,KS**

405 4th ST Box 385  
Claflin KS 67525

**Bieberie #10**

Job Ticket: 51549

**DST#: 3**

ATTN: Jim Musgrove

Test Start: 2013.01.08 @ 01:11:00

## Mud and Cushion Information

Mud Type: Gel Chem

Cushion Type:

Oil API:

deg API

Mud Weight: 9.00 lb/gal

Cushion Length:

ft

Water Salinity:

ppm

Viscosity: 59.00 sec/qt

Cushion Volume:

bbbl

Water Loss: 9.14 in<sup>3</sup>

Gas Cushion Type:

Resistivity: ohm.m

Gas Cushion Pressure:

psig

Salinity: 7400.00 ppm

Filter Cake: inches

## Recovery Information

Recovery Table

Length ft	Description	Volume bbl
1.00	OCM 15%o 85%m	0.014

Total Length: 1.00 ft      Total Volume: 0.014 bbl

Num Fluid Samples: 0

Num Gas Bombs: 0

Serial #:

Laboratory Name:

Laboratory Location:

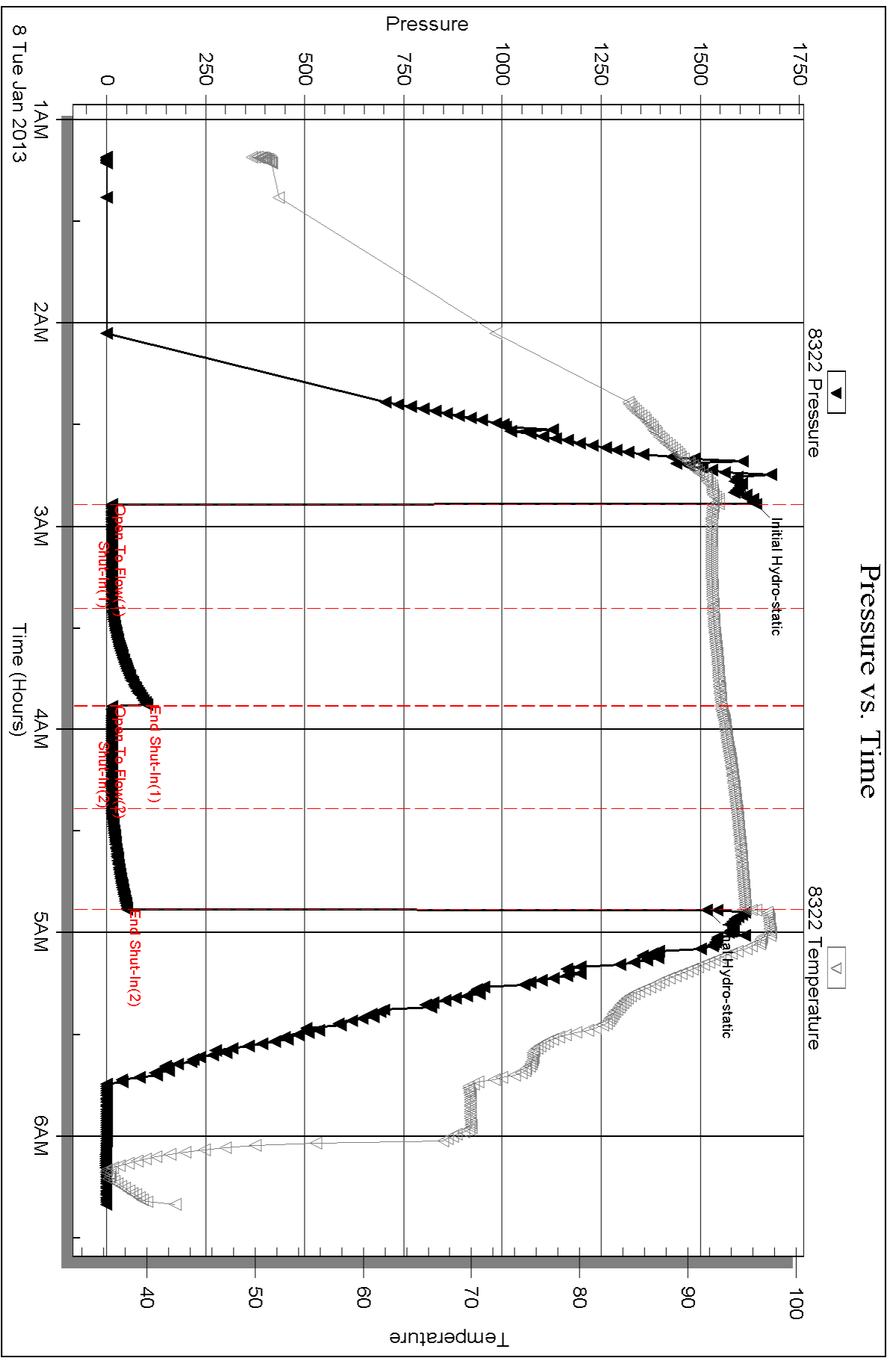
Recovery Comments:

Serial #: 8322

Outside John Roy Evans Oil Co LLC

Bieberie #10

DST Test Number: 3



Triobite Testing, Inc

Ref. No: 51549

Printed: 2013.01.10 @ 10:54:40



## DRILL STEM TEST REPORT

Prepared For: **John Roy Evans Oil Co LLC**

405 4th ST Box 385  
Claffin KS 67525

ATTN: Jim Musgrove

### **Bieberie #10**

#### **32-17s-12w Barton,KS**

Start Date: 2013.01.08 @ 12:05:00

End Date: 2013.01.08 @ 16:47:00

Job Ticket #: 51550                      DST #: 4

Trilobite Testing, Inc

PO Box 362 Hays, KS 67601

ph: 785-625-4778 fax: 785-625-5620

Printed: 2013.01.10 @ 10:53:30

John Roy Evans Oil Co LLC  
32-17s-12w Barton,KS  
Bieberie #10  
DST # 4  
Arbuckle  
2013.01.08



**TRILOBITE  
TESTING, INC**

# DRILL STEM TEST REPORT

John Roy Evans Oil Co LLC

**32-17s-12w Barton, KS**

405 4th ST Box 385  
Claflin KS 67525

**Bieberie #10**

Job Ticket: 51550

**DST#: 4**

ATTN: Jim Musgrove

Test Start: 2013.01.08 @ 12:05:00

## GENERAL INFORMATION:

Formation: **Arbuckle**

Deviated: No Whipstock: 1822.00 ft (KB)

Time Tool Opened: 13:29:50

Time Test Ended: 16:47:00

Test Type: Conventional Bottom Hole (Reset)

Tester: Jim Svaty

Unit No: 41

**Interval: 3347.00 ft (KB) To 3359.00 ft (KB) (TVD)**

Reference Elevations: 1822.00 ft (KB)

Total Depth: 3359.00 ft (KB) (TVD)

1815.00 ft (CF)

Hole Diameter: 7.88 inches Hole Condition: Fair

KB to GR/CF: 7.00 ft

**Serial #: 8734**

**Inside**

Press @ Run Depth: 16.58 psig @ 3356.00 ft (KB)

Capacity: 8000.00 psig

Start Date: 2013.01.08

End Date:

2013.01.08

Last Calib.:

2013.01.08

Start Time: 12:05:01

End Time:

16:47:00

Time On Btm:

2013.01.08 @ 13:29:30

Time Off Btm:

2013.01.08 @ 15:29:50

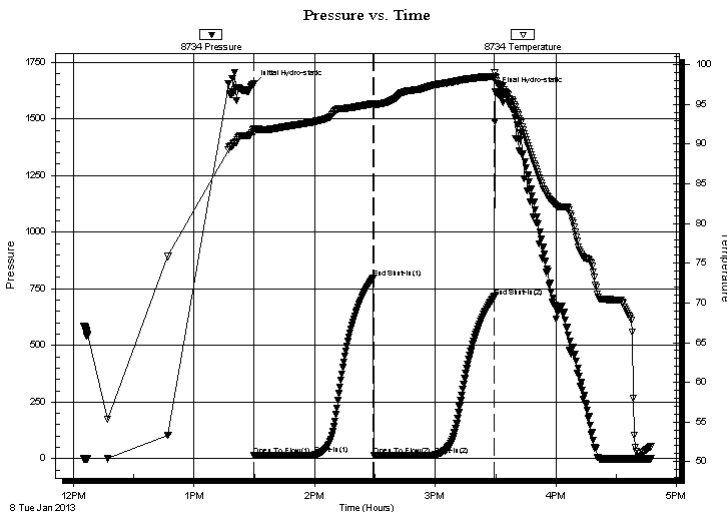
**TEST COMMENT:** 30-IFP- Weak Surface Blow

30-ISIP- No Blow

30-FFP- No Blow

30-FSIP- No Blow

## PRESSURE SUMMARY



Time (Min.)	Pressure (psig)	Temp (deg F)	Annotation
0	1653.02	91.92	Initial Hydro-static
1	14.82	91.43	Open To Flow (1)
31	17.42	92.85	Shut-In(1)
60	798.19	95.11	End Shut-In(1)
60	15.49	94.83	Open To Flow (2)
91	16.58	97.48	Shut-In(2)
120	716.16	98.55	End Shut-In(2)
121	1619.00	98.32	Final Hydro-static

## Recovery

Length (ft)	Description	Volume (bbl)
3.00	OCM 3%o 97%m	0.04

\* Recovery from multiple tests

## Gas Rates

	Choke (inches)	Pressure (psig)	Gas Rate (Mcf/d)





**TRILOBITE  
TESTING, INC**

# DRILL STEM TEST REPORT

**TOOL DIAGRAM**

John Roy Evans Oil Co LLC

**32-17s-12w Barton,KS**

405 4th ST Box 385  
Claflin KS 67525

**Bieberie #10**

Job Ticket: 51550

**DST#: 4**

ATTN: Jim Musgrove

Test Start: 2013.01.08 @ 12:05:00

## Tool Information

Drill Pipe:	Length: 3351.00 ft	Diameter: 3.80 inches	Volume: 47.01 bbl	Tool Weight:	2500.00 lb
Heavy Wt. Pipe:	Length: 0.00 ft	Diameter: 2.75 inches	Volume: 0.00 bbl	Weight set on Packer:	25000.00 lb
Drill Collar:	Length: 0.00 ft	Diameter: 2.25 inches	Volume: 0.00 bbl	Weight to Pull Loose:	38000.00 lb
			<u>Total Volume: 47.01 bbl</u>	Tool Chased	0.00 ft
Drill Pipe Above KB:	24.00 ft			String Weight: Initial	35000.00 lb
Depth to Top Packer:	3347.00 ft			Final	35000.00 lb
Depth to Bottom Packer:	ft				
Interval between Packers:	12.00 ft				
Tool Length:	32.00 ft				
Number of Packers:	2	Diameter: 6.75 inches			
Tool Comments:					

## Tool Description

Tool Description	Length (ft)	Serial No.	Position	Depth (ft)	Accum. Lengths
Shut In Tool	5.00			3332.00	
Hydraulic tool	5.00			3337.00	
Packer	5.00			3342.00	20.00 Bottom Of Top Packer
Packer	5.00			3347.00	
Stubb	1.00			3348.00	
Perforations	8.00			3356.00	
Recorder	0.00	8734	Inside	3356.00	
Recorder	0.00	8322	Outside	3356.00	
Bullnose	3.00			3359.00	12.00 Bottom Packers & Anchor
<b>Total Tool Length:</b>	<b>32.00</b>				



**TRILOBITE  
TESTING, INC**

# DRILL STEM TEST REPORT

**FLUID SUMMARY**

John Roy Evans Oil Co LLC

**32-17s-12w Barton,KS**

405 4th ST Box 385  
Claflin KS 67525

**Bieberie #10**

Job Ticket: 51550

**DST#: 4**

ATTN: Jim Musgrove

Test Start: 2013.01.08 @ 12:05:00

## Mud and Cushion Information

Mud Type: Gel Chem

Cushion Type:

Oil API:

deg API

Mud Weight: 9.00 lb/gal

Cushion Length:

ft

Water Salinity:

ppm

Viscosity: 53.00 sec/qt

Cushion Volume:

bbbl

Water Loss: 8.75 in<sup>3</sup>

Gas Cushion Type:

Resistivity: ohm.m

Gas Cushion Pressure:

psig

Salinity: 6700.00 ppm

Filter Cake: inches

## Recovery Information

Recovery Table

Length ft	Description	Volume bbbl
3.00	OCM 3%o 97%m	0.042

Total Length: 3.00 ft      Total Volume: 0.042 bbl

Num Fluid Samples: 0

Num Gas Bombs: 0

Serial #:

Laboratory Name:

Laboratory Location:

Recovery Comments:



Serial #: 8734

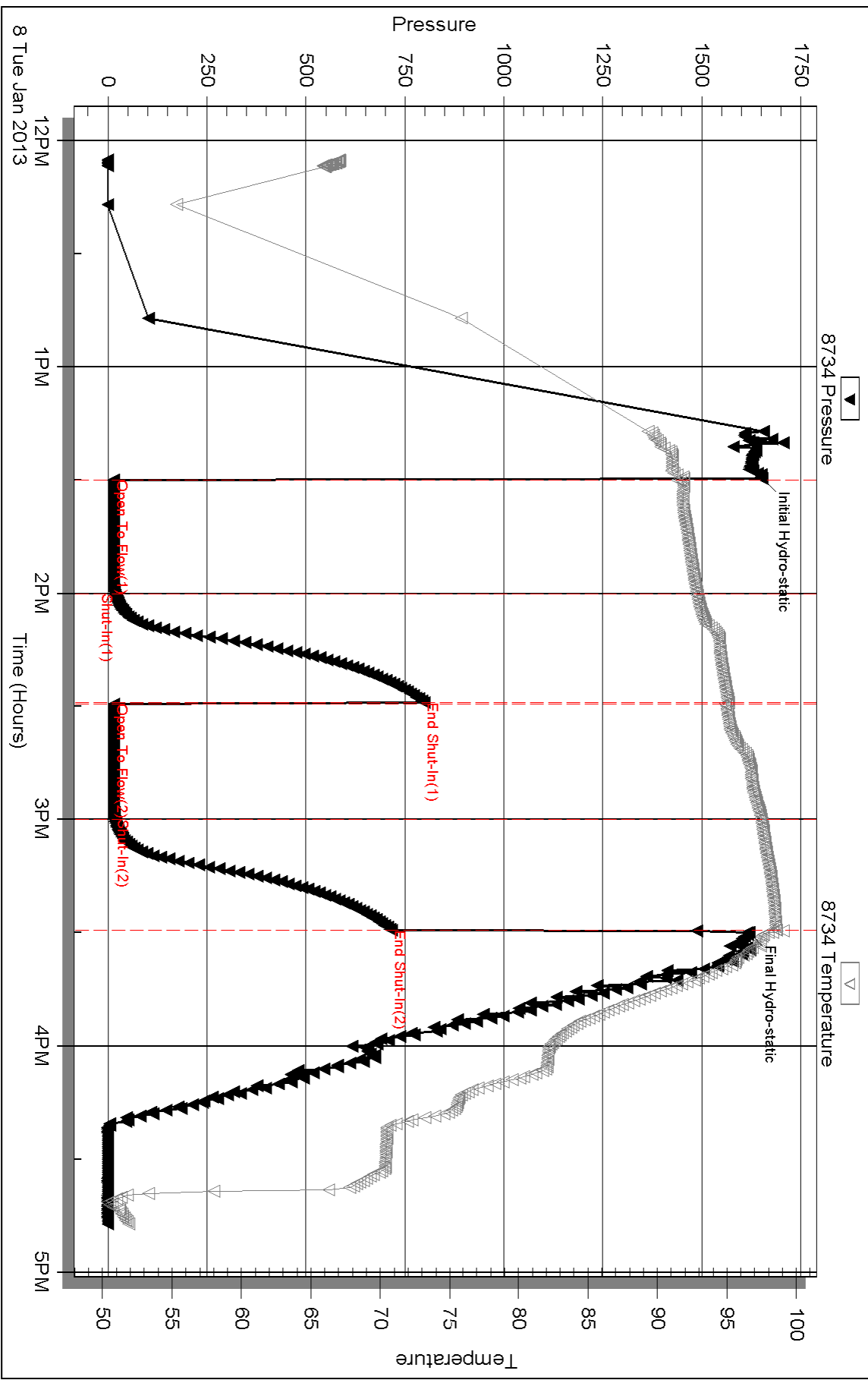
Inside

John Roy Evans Oil Co LLC

Bieberie #10

DST Test Number: 4

### Pressure vs. Time

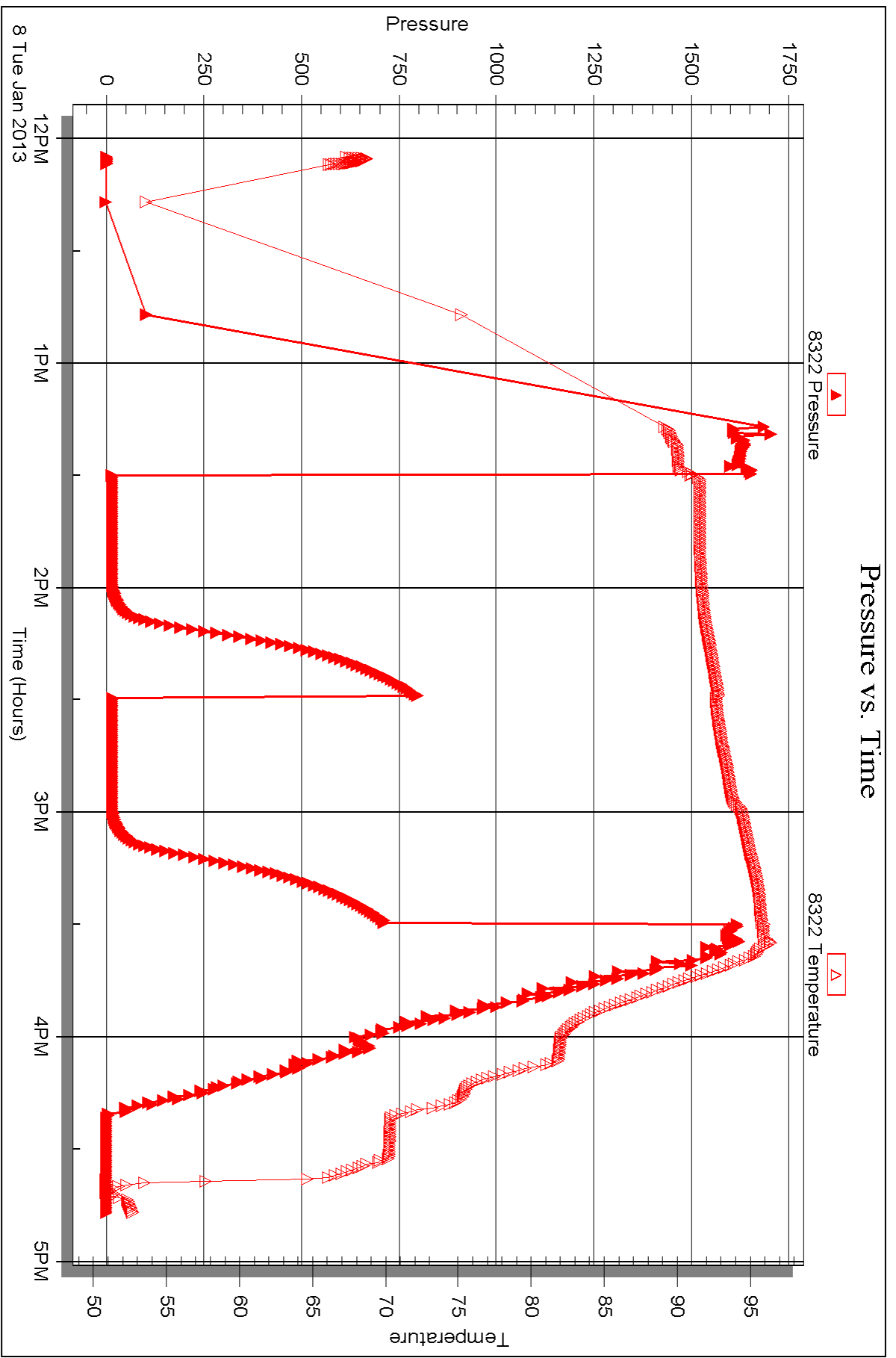


Serial #: 8322

Outside John Roy Evans Oil Co LLC

Bieberie #10

DST Test Number: 4





## DRILL STEM TEST REPORT

Prepared For: **John Roy Evans Oil Co LLC**

405 4th ST Box 385  
Claffin KS 67525

ATTN: Jim Musgrove

### **Bieberie #10**

#### **32-17s-12w Barton,KS**

Start Date: 2013.01.08 @ 23:10:00

End Date: 2013.01.09 @ 06:07:00

Job Ticket #: 50301                      DST #: 5

Trilobite Testing, Inc  
PO Box 362 Hays, KS 67601  
ph: 785-625-4778 fax: 785-625-5620

Printed: 2013.01.10 @ 10:50:54

John Roy Evans Oil Co LLC  
32-17s-12w Barton,KS  
Bieberie #10  
DST # 5  
Arbuckle  
2013.01.08



**TRILOBITE  
TESTING, INC**

# DRILL STEM TEST REPORT

John Roy Evans Oil Co LLC

**32-17s-12w Barton,KS**

405 4th ST Box 385  
Claflin KS 67525

**Bieberie #10**

Job Ticket: 50301

**DST#: 5**

ATTN: Jim Musgrove

Test Start: 2013.01.08 @ 23:10:00

## GENERAL INFORMATION:

Formation: **Arbuckle**

Deviated: No Whipstock: 1822.00 ft (KB)

Time Tool Opened: 01:29:00

Time Test Ended: 06:07:00

Test Type: Conventional Bottom Hole (Reset)

Tester: Jim Svaty

Unit No: 41

**Interval: 3359.00 ft (KB) To 3375.00 ft (KB) (TVD)**

Reference Elevations: 1822.00 ft (KB)

Total Depth: 3375.00 ft (KB) (TVD)

1815.00 ft (CF)

Hole Diameter: 7.88 inches Hole Condition: Fair

KB to GR/CF: 7.00 ft

**Serial #: 8734 Inside**

Press @RunDepth: 37.39 psig @ 3372.00 ft (KB)

Capacity: 8000.00 psig

Start Date: 2013.01.08

End Date:

2013.01.09

Last Calib.: 2013.01.09

Start Time: 23:10:01

End Time:

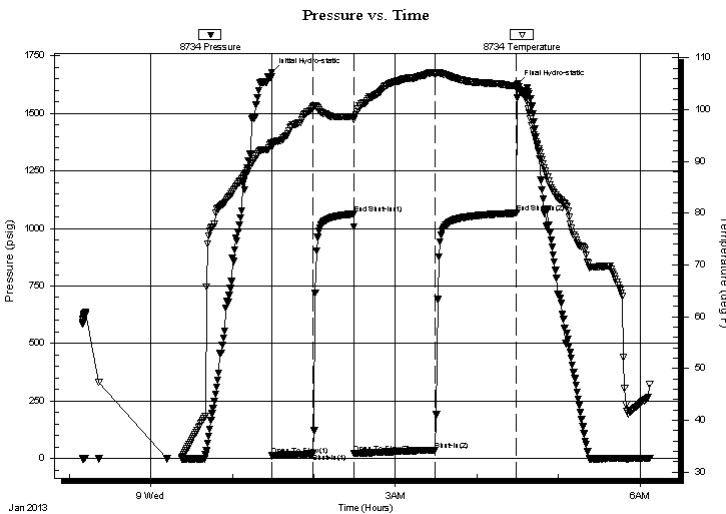
06:06:50

Time On Btm: 2013.01.09 @ 01:28:50

Time Off Btm: 2013.01.09 @ 04:29:30

**TEST COMMENT:** 30-IFP- Surface Blow Building to 2 3/4"  
30-ISIP- No Blow  
60-FFP- Surface Blow in 5 min. Building to 3 1/2"  
60-FSIP- No Blow

## PRESSURE SUMMARY



Time (Min.)	Pressure (psig)	Temp (deg F)	Annotation
0	1678.44	93.57	Initial Hydro-static
1	12.29	92.73	Open To Flow (1)
31	22.02	100.49	Shut-In(1)
61	1063.29	98.66	End Shut-In(1)
61	21.60	98.14	Open To Flow (2)
121	37.39	107.06	Shut-In(2)
181	1067.06	104.54	End Shut-In(2)
181	1626.55	104.69	Final Hydro-static

## Recovery

Length (ft)	Description	Volume (bbl)
58.00	MCW 25% <sub>m</sub> 75% <sub>w</sub>	0.81
2.00	OCW 30% <sub>o</sub> 70% <sub>w</sub>	0.03

\* Recovery from multiple tests

## Gas Rates

	Choke (inches)	Pressure (psig)	Gas Rate (Mcf/d)





**TRILOBITE  
TESTING, INC**

# DRILL STEM TEST REPORT

**TOOL DIAGRAM**

John Roy Evans Oil Co LLC

**32-17s-12w Barton,KS**

405 4th ST Box 385  
Clafin KS 67525

**Bieberie #10**

Job Ticket: 50301

**DST#: 5**

ATTN: Jim Musgrove

Test Start: 2013.01.08 @ 23:10:00

## Tool Information

Drill Pipe:	Length: 3351.00 ft	Diameter: 3.80 inches	Volume: 47.01 bbl	Tool Weight: 2500.00 lb
Heavy Wt. Pipe:	Length: 0.00 ft	Diameter: 2.75 inches	Volume: 0.00 bbl	Weight set on Packer: 25000.00 lb
Drill Collar:	Length: 0.00 ft	Diameter: 2.25 inches	Volume: 0.00 bbl	Weight to Pull Loose: 36000.00 lb
			<u>Total Volume: 47.01 bbl</u>	Tool Chased 0.00 ft
Drill Pipe Above KB:	12.00 ft			String Weight: Initial 34000.00 lb
Depth to Top Packer:	3359.00 ft			Final 34000.00 lb
Depth to Bottom Packer:	ft			
Interval between Packers:	16.00 ft			
Tool Length:	36.00 ft			
Number of Packers:	2	Diameter: 6.75 inches		

Tool Comments:

Tool Description	Length (ft)	Serial No.	Position	Depth (ft)	Accum. Lengths
------------------	-------------	------------	----------	------------	----------------

Shut In Tool	5.00			3344.00	
Hydraulic tool	5.00			3349.00	
Packer	5.00			3354.00	20.00 Bottom Of Top Packer
Packer	5.00			3359.00	
Stubb	1.00			3360.00	
Perforations	12.00			3372.00	
Recorder	0.00	8734	Inside	3372.00	
Recorder	0.00	8322	Outside	3372.00	
Bullnose	3.00			3375.00	16.00 Bottom Packers & Anchor
<b>Total Tool Length:</b>	<b>36.00</b>				



**TRILOBITE  
TESTING, INC**

# DRILL STEM TEST REPORT

**FLUID SUMMARY**

John Roy Evans Oil Co LLC

**32-17s-12w Barton,KS**

405 4th ST Box 385  
Claflin KS 67525

**Bieberie #10**

Job Ticket: 50301

**DST#: 5**

ATTN: Jim Musgrove

Test Start: 2013.01.08 @ 23:10:00

## Mud and Cushion Information

Mud Type: Gel Chem

Cushion Type:

Oil API:

deg API

Mud Weight: 9.00 lb/gal

Cushion Length:

ft

Water Salinity:

28000 ppm

Viscosity: 53.00 sec/qt

Cushion Volume:

bbbl

Water Loss: 8.76 in<sup>3</sup>

Gas Cushion Type:

Resistivity: ohm.m

Gas Cushion Pressure:

psig

Salinity: 6700.00 ppm

Filter Cake: inches

## Recovery Information

Recovery Table

Length ft	Description	Volume bbbl
58.00	MCW 25% <sub>m</sub> 75% <sub>w</sub>	0.814
2.00	OCW 30% <sub>o</sub> 70% <sub>w</sub>	0.028

Total Length: 60.00 ft      Total Volume: 0.842 bbl

Num Fluid Samples: 0

Num Gas Bombs: 0

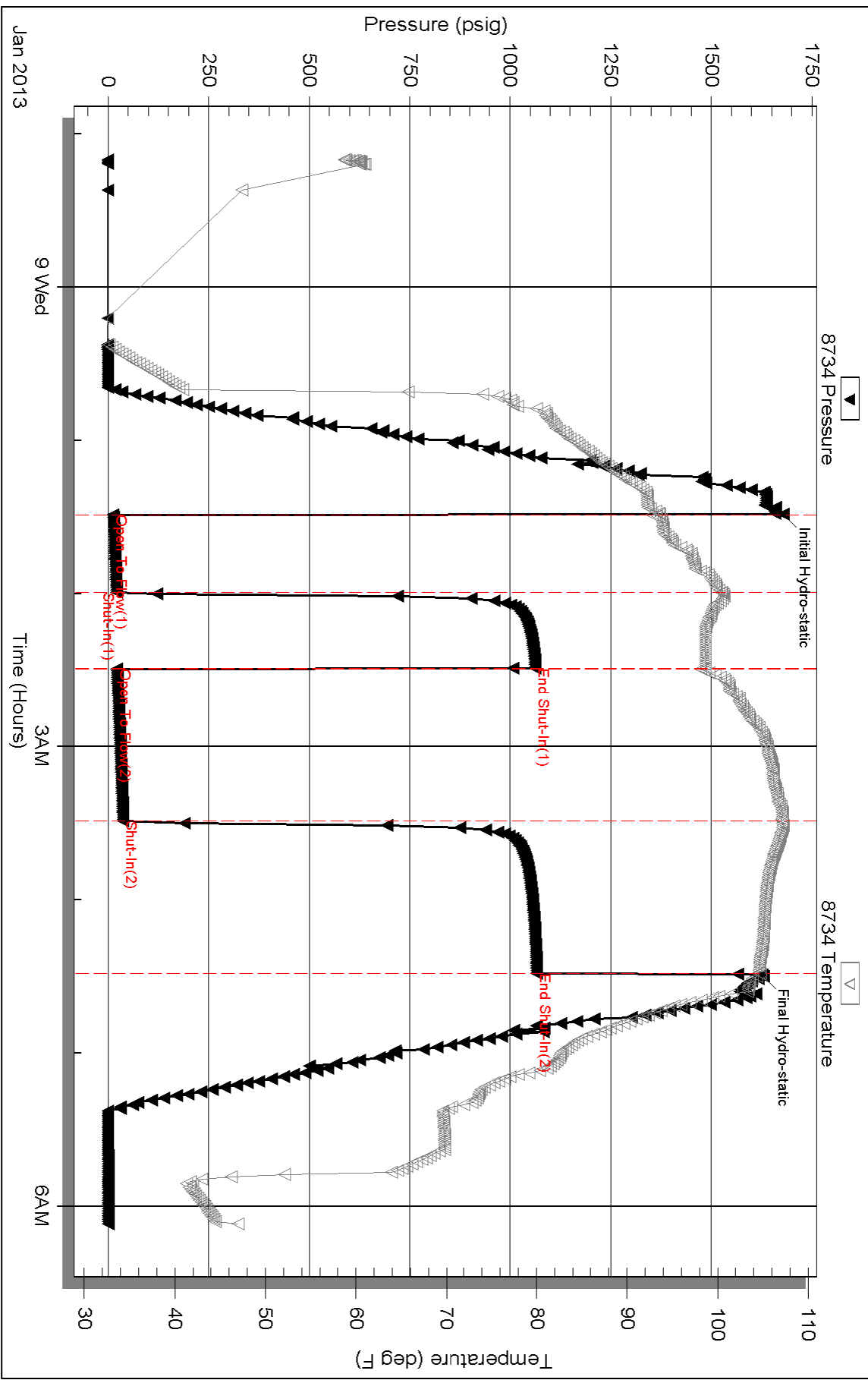
Serial #:

Laboratory Name:

Laboratory Location:

Recovery Comments: .511 @ 34

### Pressure vs. Time



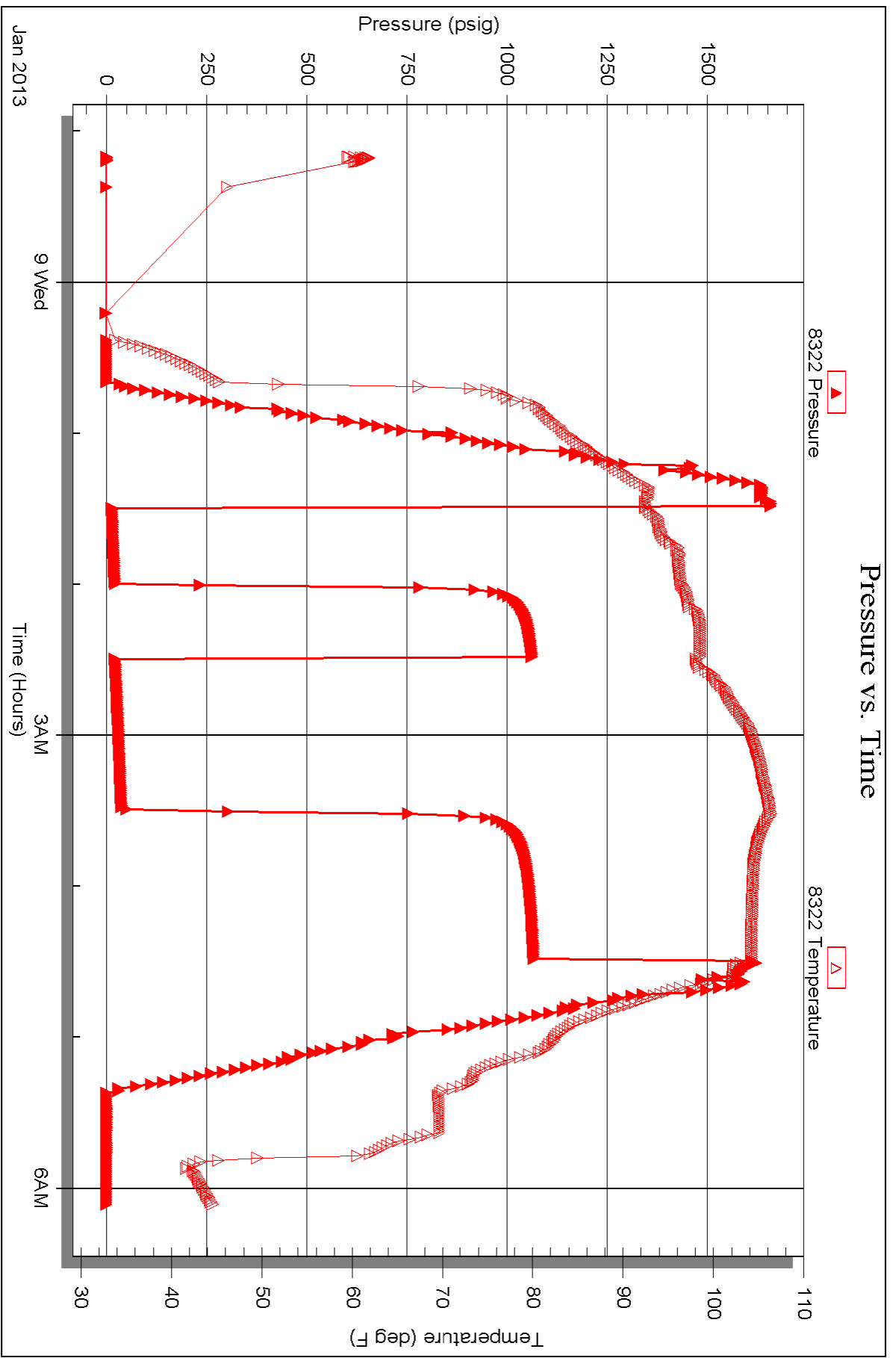


Serial #: 8322

Outside John Roy Evans Oil Co LLC

Bieberie #10

DST Test Number: 5





# TRILOBITE TESTING INC.

1515 Commerce Parkway • Hays, Kansas 67601

## Test Ticket

NO. 51547

Well Name & No. Bieberie #10 Test No. 1 Date 1-6-13  
 Company John Roy Evans Oil Co. LLC. Elevation 1822 KB 1815 GL  
 Address 405 4th St Box 385 Claflin KS, 67525  
 Co. Rep / Geo. Wyatt 5033606507 Rig Royal #2  
 Location: Sec. 32 Twp. 17<sup>s</sup> Rge. 12<sup>w</sup> Co. Barton State KS

Interval Tested 3079-3130 Zone Tested LRC "A-C"  
 Anchor Length 51 Drill Pipe Run 3067 Mud Wt. 9.1  
 Top Packer Depth 3074 Drill Collars Run 0 Vis 54  
 Bottom Packer Depth 3079 Wt. Pipe Run 0 WL 8.8  
 Total Depth 3130 Chlorides 6500 ppm System LCM 1/2

Blow Description IFP - BOB in 15min  
ISIP - No Blow  
FFP - Surface Blow Building to 6 1/2 in  
FSIP - No Blow

Rec	Feet of	%gas	%oil	%water	%mud
<u>30</u>	<u>mud</u>			<u>100</u>	
Rec	Feet of	%gas	%oil	%water	%mud
Rec	<u>150 - ISIP</u>	%gas	%oil	%water	%mud
Rec	Feet of	%gas	%oil	%water	%mud
Rec	Feet of	%gas	%oil	%water	%mud

Rec Total 30 BHT 99 Gravity \_\_\_\_\_ API RW \_\_\_\_\_ @ \_\_\_\_\_ °F Chlorides \_\_\_\_\_ ppm

(A) Initial Hydrostatic 1534  Test 1150 T-On Location 15:00  
 (B) First Initial Flow 23  Jars \_\_\_\_\_ T-Started 16:00  
 (C) First Final Flow 24  Safety Joint \_\_\_\_\_ T-Open 17:32  
 (D) Initial Shut-In 253  Circ Sub \_\_\_\_\_ T-Pulled 20:02  
 (E) Second Initial Flow 28  Hourly Standby \_\_\_\_\_ T-Out 21:26  
 (F) Second Final Flow 32  Mileage 116 RT 179.80 Comments \_\_\_\_\_  
 (G) Final Shut-In 307  Sampler \_\_\_\_\_  
 (H) Final Hydrostatic 1428  Straddle \_\_\_\_\_  Ruined Shale Packer \_\_\_\_\_  
 Shale Packer \_\_\_\_\_  Ruined Packer \_\_\_\_\_  
 Extra Packer \_\_\_\_\_  Extra Copies \_\_\_\_\_  
 Initial Open 30  Extra Recorder \_\_\_\_\_ Sub Total 0  
 Initial Shut-In 30  Day Standby \_\_\_\_\_ Total 1329.80  
 Final Flow 45  Accessibility \_\_\_\_\_ MP/DST Disc't \_\_\_\_\_  
 Final Shut-In 45 Sub Total 1329.80

Approved By \_\_\_\_\_ Our Representative [Signature]  
 Trilobite Testing Inc. shall not be liable for damaged of any kind of the property or personnel of the one for whom a test is made, or for any loss suffered or sustained, directly or indirectly, through the use of its equipment, or its statements or opinion concerning the results of any test, tools lost or damaged in the hole shall be paid for at cost by the party for whom the test is made.



# TRILOBITE TESTING INC.

1515 Commerce Parkway • Hays, Kansas 67601

## Test Ticket

NO. 51548

4/10

Well Name & No. Bieberie #10 Test No. 2 Date 1-7-13  
 Company John Roy Evans Oil Co. LLC Elevation 1822 KB 1815 GL  
 Address 405 4th St Box 385 Claflin KS, 67525  
 Co. Rep / Geo. Wyatt Rig Royal #2  
 Location: Sec. 32 Twp. 17<sup>s</sup> Rge. 12<sup>w</sup> Co. Barton State KS

Interval Tested 3130-3172 Zone Tested LKC "D-F"  
 Anchor Length 42 Drill Pipe Run 3130 Mud Wt. 9.1  
 Top Packer Depth 3125 Drill Collars Run 0 Vis 54  
 Bottom Packer Depth 3130 Wt. Pipe Run 0 WL 8.8  
 Total Depth 3172 Chlorides 6500 ppm System LCM 1/2

Blow Description IFP - BOB in 19min  
ISIP - No Blow  
FFP - BOB in 37min  
FSIP - No Blow

Rec	Feet of	%gas	%oil	%water	%mud
<u>140</u>	<u>mcw</u>		<u>90</u>	<u>10</u>	
Rec	Feet of	%gas	%oil	%water	%mud
Rec	Feet of	%gas	%oil	%water	%mud
Rec	Feet of	%gas	%oil	%water	%mud
Rec	Feet of	%gas	%oil	%water	%mud

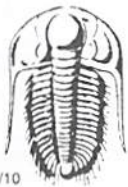
Rec Total 140 BHT 106 Gravity \_\_\_\_\_ API RW 126 @ 38 °F Chlorides 125,000 ppm

(A) Initial Hydrostatic 1557  Test 1150 T-On Location 3:38  
 (B) First Initial Flow 16  Jars \_\_\_\_\_ T-Started 3:39  
 (C) First Final Flow 54  Safety Joint \_\_\_\_\_ T-Open 5:20  
 (D) Initial Shut-In 341  Circ Sub \_\_\_\_\_ T-Pulled 7:50  
 (E) Second Initial Flow 55  Hourly Standby \_\_\_\_\_ T-Out 8:56  
 (F) Second Final Flow 95  Mileage 179.80 Comments \_\_\_\_\_  
 (G) Final Shut-In 323  Sampler \_\_\_\_\_  
 (H) Final Hydrostatic 1548  Straddle \_\_\_\_\_  
 Shale Packer \_\_\_\_\_  
 Extra Packer \_\_\_\_\_  
 Extra Recorder \_\_\_\_\_  
 Day Standby \_\_\_\_\_  
 Accessibility \_\_\_\_\_

Initial Open 30  Ruined Shale Packer \_\_\_\_\_  
 Initial Shut-In 30  Ruined Packer \_\_\_\_\_  
 Final Flow 45  Extra Copies \_\_\_\_\_  
 Final Shut-In 45 Sub Total 0  
 Sub Total 1329.80 Total 1329.80  
 MP/DST Disc't \_\_\_\_\_

Approved By \_\_\_\_\_ Our Representative [Signature]

Trilobite Testing Inc. shall not be liable for damaged of any kind of the property or personnel of the one for whom a test is made, or for any loss suffered or sustained, directly or indirectly, through the use of its equipment, or its statements or opinion concerning the results of any test, tools lost or damaged in the hole shall be paid for at cost by the party for whom the test is made.



# TRILOBITE TESTING INC.

1515 Commerce Parkway • Hays, Kansas 67601

## Test Ticket

NO. 51549

4/10

Well Name & No. Bieberie #10 Test No. 3 Date 1-8-13  
 Company John Roy Evans Oil Co LLC Elevation 1822 KB 1815 GL  
 Address 405 4th St Box 385 Claflin Ks. 67525  
 Co. Rep / Geo. Wyatt Rig Royal #2  
 Location: Sec. 32 Twp. 17<sup>s</sup> Rge. 12<sup>w</sup> Co. Barfon State Ks

Interval Tested 3320-3350 Zone Tested Arbuckle  
 Anchor Length 30 Drill Pipe Run 3320 Mud Wt. 9.3  
 Top Packer Depth 3315 Drill Collars Run 0 Vis 59  
 Bottom Packer Depth 3320 Wt. Pipe Run 0 WL 9.2  
 Total Depth 3350 Chlorides 7400 ppm System LCM 1/2

Blow Description IFP - Very Weak Surface Blow  
ISIP - No Blow  
FFP - Very Weak Surface Blow  
FSIP - No Blow

Rec	Feet of	%gas	%oil	%water	%mud
<u>1</u>	<u>OCM</u>	<u>15</u>		<u>85</u>	
Rec	Feet of	%gas	%oil	%water	%mud
Rec	Feet of	%gas	%oil	%water	%mud
Rec	Feet of	%gas	%oil	%water	%mud
Rec	Feet of	%gas	%oil	%water	%mud

Rec Total 1 BHT 96 Gravity \_\_\_\_\_ API RW \_\_\_\_\_ @ \_\_\_\_\_ °F Chlorides \_\_\_\_\_ ppm

(A) Initial Hydrostatic 1640  Test 1150 T-On Location 1:09  
 (B) First Initial Flow 13  Jars \_\_\_\_\_ T-Started 1:11  
 (C) First Final Flow 13  Safety Joint \_\_\_\_\_ T-Open 2:54  
 (D) Initial Shut-In 102  Circ Sub \_\_\_\_\_ T-Pulled 4:54  
 (E) Second Initial Flow 13  Hourly Standby \_\_\_\_\_ T-Out 6:21  
 (F) Second Final Flow 13  Mileage 179.80 Comments \_\_\_\_\_  
 (G) Final Shut-In 50  Sampler \_\_\_\_\_  
 (H) Final Hydrostatic 1516  Straddle \_\_\_\_\_  Ruined Shale Packer \_\_\_\_\_  
 Shale Packer \_\_\_\_\_  Ruined Packer \_\_\_\_\_

Initial Open 30  Extra Packer \_\_\_\_\_  Extra Copies \_\_\_\_\_  
 Initial Shut-In 30  Extra Recorder \_\_\_\_\_ Sub Total 0  
 Final Flow 30  Day Standby \_\_\_\_\_ Total 1329.80  
 Final Shut-In 30  Accessibility \_\_\_\_\_ MP/DST Disc't \_\_\_\_\_  
 Sub Total 1329.80

Approved By \_\_\_\_\_ Our Representative [Signature]

Trilobite Testing Inc. shall not be liable for damaged of any kind of the property or personnel of the one for whom a test is made, or for any loss suffered or sustained, directly or indirectly, through the use of its equipment, or its statements or opinion concerning the results of any test, tools lost or damaged in the hole shall be paid for at cost by the party for whom the test is made.



# TRILOBITE TESTING INC.

1515 Commerce Parkway • Hays, Kansas 67601

## Test Ticket

NO. 51550

4/10

Well Name & No. Bieberie #10 Test No. 4 Date 1-8-13  
 Company John Roy Evans Oil Co LLC Elevation 1822 KB 1815 GL  
 Address 405 4th St Box 385 Clarin Ks. 67525  
 Co. Rep / Geo. Jim Musgrove Rig Royal #2  
 Location: Sec. 32 Twp. 17<sup>s</sup> Rge. 12<sup>w</sup> Co. Barton State Ks

Interval Tested 3347-3359 Zone Tested Arbuckle  
 Anchor Length 12 Drill Pipe Run 3351 Mud Wt. 9.1  
 Top Packer Depth 3342 Drill Collars Run 0 Vis 53  
 Bottom Packer Depth 3347 Wt. Pipe Run 0 WL 8.8  
 Total Depth 3359 Chlorides 6700 ppm System LCM 1/2

Blow Description IFP - Weak Surface Blow  
ISIP - No Blow  
FFP - No Blow  
FSIP - No Blow

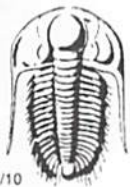
Rec	Feet of	%gas	%oil	%water	%mud
<u>3</u>	<u>CM</u>	<u>3</u>		<u>97</u>	
Rec	Feet of	%gas	%oil	%water	%mud
Rec	Feet of	%gas	%oil	%water	%mud
Rec	Feet of	%gas	%oil	%water	%mud
Rec	Feet of	%gas	%oil	%water	%mud

Rec Total 3 BHT 98 Gravity \_\_\_\_\_ API RW \_\_\_\_\_ @ \_\_\_\_\_ °F Chlorides \_\_\_\_\_ ppm

(A) Initial Hydrostatic 1653  Test 1150 T-On Location 11:49  
 (B) First Initial Flow 14  Jars \_\_\_\_\_ T-Started 12:05  
 (C) First Final Flow 17  Safety Joint \_\_\_\_\_ T-Open 13:30  
 (D) Initial Shut-In 798  Circ Sub \_\_\_\_\_ T-Pulled 15:30  
 (E) Second Initial Flow 15  Hourly Standby \_\_\_\_\_ T-Out 16:47  
 (F) Second Final Flow 16  Mileage 179.80 Comments \_\_\_\_\_  
 (G) Final Shut-In 716  Sampler \_\_\_\_\_  
 (H) Final Hydrostatic 1619  Straddle \_\_\_\_\_  Ruined Shale Packer \_\_\_\_\_  
 Shale Packer \_\_\_\_\_  Ruined Packer \_\_\_\_\_  
 Extra Packer \_\_\_\_\_  Extra Copies \_\_\_\_\_  
 Initial Open 30  Extra Recorder \_\_\_\_\_ Sub Total 0  
 Initial Shut-In 30  Day Standby \_\_\_\_\_ Total 1329.80  
 Final Flow 30  Accessibility \_\_\_\_\_ MP/DST Disc't \_\_\_\_\_  
 Final Shut-In 30 Sub Total 1329.80

Approved By \_\_\_\_\_ Our Representative [Signature]

Trilobite Testing Inc. shall not be liable for damaged of any kind of the property or personnel of the one for whom a test is made, or for any loss suffered or sustained, directly or indirectly, through the use of its equipment, or its statements or opinion concerning the results of any test, tools lost or damaged in the hole shall be paid for at cost by the party for whom the test is made.



# TRILOBITE TESTING INC.

1515 Commerce Parkway • Hays, Kansas 67601

## Test Ticket

NO. **50301**

Well Name & No. Bieberie # 10 Test No. 5 Date 1-8-13  
 Company John Roy Evans Oil Co. LLC Elevation 1822 KB 1815 GL  
 Address 4054th SA Box 385 Claflin KS 67525  
 Co. Rep / Geo. Jim Musgrove Rig Royal #2  
 Location: Sec. 32 Twp. 17S Rge. 12W Co. Barton State KS

Interval Tested 3359-3375 Zone Tested Arbuckle  
 Anchor Length 16 Drill Pipe Run 3351 Mud Wt. 9.1  
 Top Packer Depth 3354 Drill Collars Run 0 Vis 53  
 Bottom Packer Depth 3359 Wt. Pipe Run 0 WL 8.8  
 Total Depth 3375 Chlorides 6700 ppm System LCM 1/2

Blow Description I FP - Surface Blow Building To 2 3/4 in.  
ISIP - No Blow  
F FP - Surface Blow in 5 min. Building to 3 1/2 in  
FSIP - No Blow

Rec	Feet of	%gas	%oil	%water	%mud
<u>58</u>	<u>MCW</u>		<u>75</u>	<u>25</u>	
<u>2</u>	<u>OCW</u>	<u>30</u>	<u>70</u>		

Rec Total 60 BHT 104 Gravity \_\_\_\_\_ API RW .511 @ 34 ° F Chlorides 28000 ppm

(A) Initial Hydrostatic 1678  Test 1150 T-On Location 22:20  
 (B) First Initial Flow 12  Jars \_\_\_\_\_ T-Started 23:10  
 (C) First Final Flow 22  Safety Joint \_\_\_\_\_ T-Open 1:30  
 (D) Initial Shut-In 1063  Circ Sub \_\_\_\_\_ T-Pulled 4:30  
 (E) Second Initial Flow 21  Hourly Standby \_\_\_\_\_ T-Out 6:07  
 (F) Second Final Flow 37  Mileage 179.80 Comments \_\_\_\_\_  
 (G) Final Shut-In 1067  Sampler \_\_\_\_\_  
 (H) Final Hydrostatic 1626  Straddle \_\_\_\_\_  Ruined Shale Packer \_\_\_\_\_  
 Shale Packer \_\_\_\_\_  Ruined Packer \_\_\_\_\_

Initial Open 30  Extra Packer \_\_\_\_\_  Extra Copies \_\_\_\_\_  
 Initial Shut-In 30  Extra Recorder \_\_\_\_\_ Sub Total 0  
 Final Flow 60  Day Standby \_\_\_\_\_ Total 1329.80  
 Final Shut-In 60  Accessibility \_\_\_\_\_ MP/DST Disc't \_\_\_\_\_  
 Sub Total 1329.80

Approved By \_\_\_\_\_ Our Representative Jim Musgrove

TriLOBITE TESTING Inc. shall not be liable for damaged of any kind of the property or personnel of the one for whom a test is made, or for any loss suffered or sustained, directly or indirectly, through the use of its equipment, or its statements or opinion concerning the results of any test, tools lost or damaged in the hole shall be paid for at cost by the party for whom the test is made.