



James C. Musgrove
 Petroleum Geologist
 Office (620) 588-4250 212 Main St. • P.O. Box 215 • Clarfin, KS 67525 Home (620) 587-3444

GEOLOGIST'S REPORT

DRILLING TIME AND SAMPLE LOG

COMPANY John Roy Evans Oil Co LLC ELEVATIONS
 LEASE Bieberle # 10 KB 1822
 FIELD Redwing DF _____
 LOCATION NW-SE-NE-SE (1880'ELS) CL 1815
 SEC 32 TWP 17 S RGE 12 W Measurements are All From KB
 COUNTY Barton STATE KS
 CONTRACTOR Royal Drilling Inc Rig #2 SURFACE CASING 8 7/8" x 710'
 SPUD 1/02/13 COMP 1/9/2013 PRODUCT ON none
 RTD 3375 LTD 3372 ELECTRICAL SURVEYS _____
 MUD UP 2700' TYPE MUD Chemical displaced

SAMPLES SAVED FROM 2800 TO 3350
 DRILLING TIME KEPT FROM 2800 TO 3350
 SAMPLES EXAMINED FROM 2800 TO 3350
 GEOLOGICAL SUPERVISION FROM 2850 TO 3350
 GEOLOGIST ON WELL Wyatt Urban & Jim Musgrove

FORMATION TOPS	LOG	SAMPLES
<u>Quartzite</u>	<u>707 - 4115</u>	
<u>Base anhydrite</u>	<u>731 - 11091</u>	
<u>Hebner</u>	<u>2981 - 11579</u>	
<u>Toronto</u>	<u>2998 - 1176</u>	
<u>Douglas</u>	<u>3012 - 1190</u>	
<u>Brown lime</u>	<u>3078 - 1256</u>	
<u>Mansting</u>	<u>3095 - 1273</u>	
<u>Arpuckle</u>	<u>3341 - 1519</u>	
<u>RTD</u>	<u>3375 - 1553</u>	
<u>MTD</u>	<u>3372 - 1550</u>	

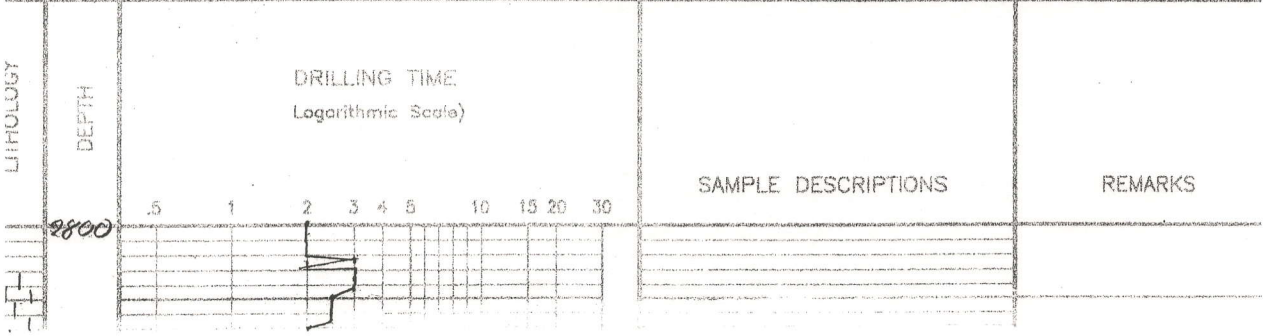
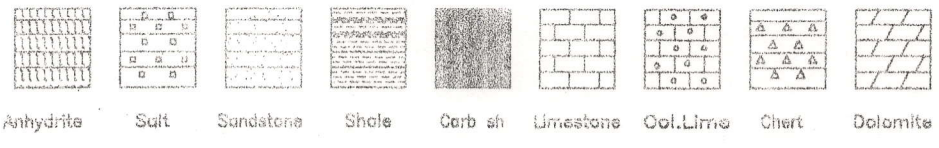
MARKS

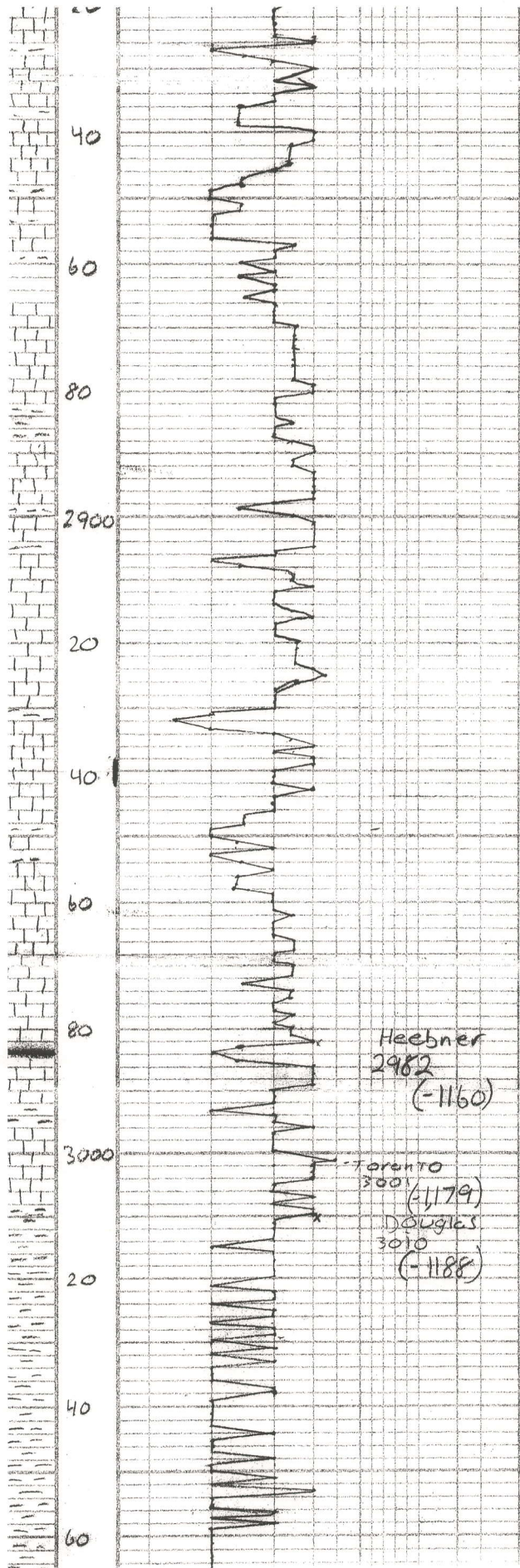
The Bieberle #10 was plugged & Abandoned at the RTD 3375



Respectfully Submitted,
 Wyatt Urban & James C. Musgrove
 Petroleum Geologists

LEGEND





Blk/gray Carb shale
L.S. - Tan/gray fxl, FEW Foss

gray/Wht Shale, silty

L.S. - Tan/Em, esp fxl mar.
No foss, No struc.

L.S. - Tan/Wht fxl - Foss, -
gray-Wht silt shale -

gray/green sh.
L.S. - Tan/gray fxl - NO Foss -
gray/green sh.
L.S. - Gray - fxl - NO Foss -

L.S. Gray/Wht, sub, oom, light brn
str on surf, NO odor.

L.S. Gray - fxl - Light brn spot on surf
NO odor.

Gray-blk, silty shale.

L.S. - Tan/Wht, tan/fxl - Light
brn str on surf, smoky gray
NO odor, Vuggy wht L.S. good
show.

1822 KB

L.S. - Tan/Brn - fxl mar. FEW Foss
Light Brn & blk str.

L.S. - Gray - fxl - blk dy.

L.S. - Wht/Tan sub oom. lgt str NO VOS

Heebner
2982
(-1160)

Toronto
3001
(1179)
Douglas
3010
(-1188)

Blk Carb sh

L.S. - Wht/Tan spot str on surf.
sub brn L.S.

gray/blk shale.

L.S. - Tanish fxl - sub oom, poor φ
light brn str on surf NO odor.

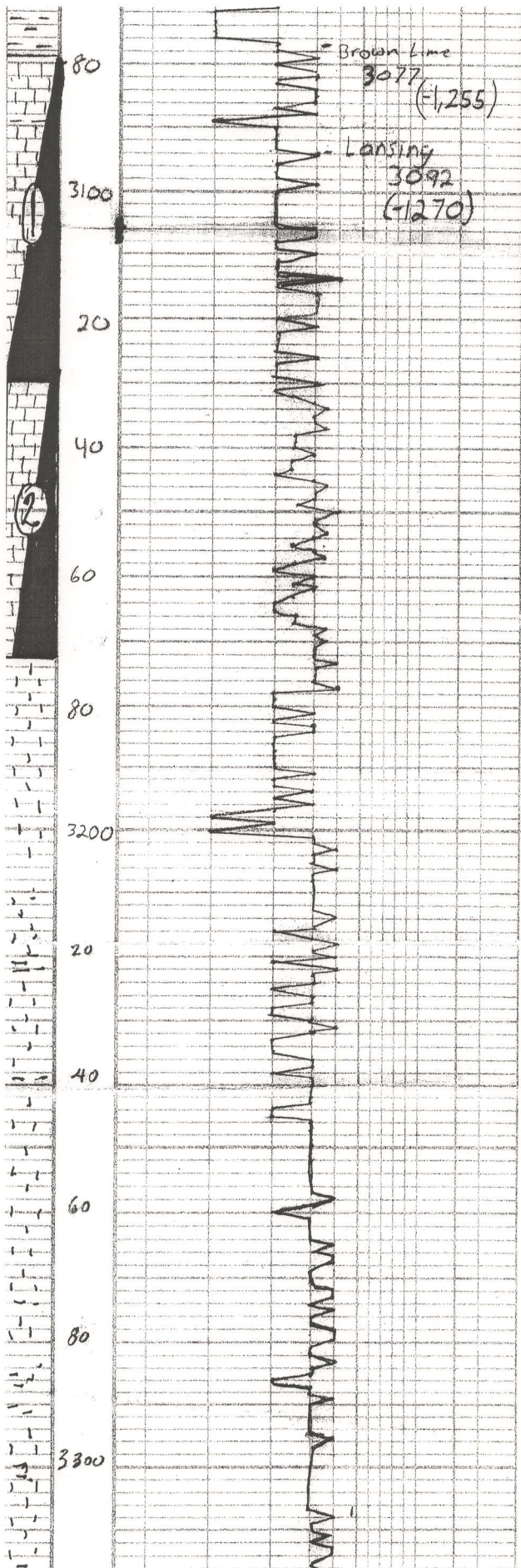
L.S. - Wht/Tan fxl - NO/FEW Foss.

sh. green/gray - soft shales.

sh. Gray/blk soft mica sh. VFG



gray/blk soft fine grain sh.

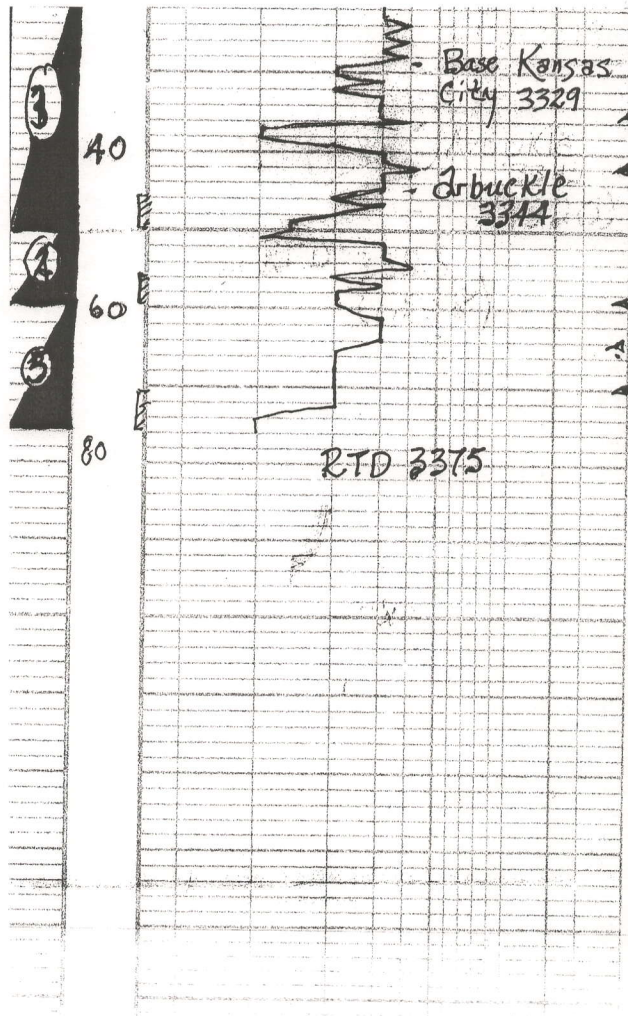


L.S. Tan fxl - Dy - spot oil.
 L.S. Tan/Bra Chky fxl - oil spot on surf. odor.
 L.S. Whit/Tan Light Brn stain poor vis. ϕ strong odor gry/bllk sha soft.
 Dk/gry-Bk shale fine grain
 L.S. Tan/gry fxl - sub oom odor stain on surf.
 L.S. Whit fxl - light stain on surf. good odor.
 L.S. - gry - light Brn spot stain sub oom poor vis ϕ . fair odor.
 L.S. Whit/Tan oom poor vis ϕ odor.
 Dk gry-sh.
 L.S. Tan/brn Dy fxl, no odor.
 L.S. Whit measure stn. fxl. few foss.
 gry/greenis silty sh. fgr.
 L.S. sub oom good vis ϕ light Brn stn. no odor.
 L.S. Tan/Buff fxl. few foss no surf stn. no odor poor vis ϕ .
 L.S. Tan sub oom light stain good odor poor vis ϕ .
 L.S. Whit oom light dark Bk stain good odor.
 L.S. - Whit/Tan oom oom. fair ϕ ft odor?
 Gry/green shale fine grained.
 L.S. Tan/brn Dy fxl - good odor.
 L.S. Gry fxl - few foss faint to no odor.
 L.S. Whit oom light

DST #2 - 3079-313
 30.30.45.45
 Blow strong.
 Recovery 30' m
 Pressures: ISIP 25
 FSIP 30
 FFP 23
 FFP 28
 HSH: 1534-1

DST #2 3130-3172
 30.30.45.45
 No Blow
 Recovery 140' m.c.w
 10% mud 90% water
 PSI: ISIP 341 PSI
 FSIP 323"
 FFP 16.54 Pa
 SSP 55-95"
 HSH 1557-1548

1822 KB



mar./Gry. shale soft f.g.n.

DST #3 3320-3
30-30-45-45
Blow; weak
Rec; 1' oil cut mud
(15% oil) 85% mud
Pressures; ISIP 102;
ISIP 50;
ISIP 12-13'
ISIP 13-13'
HSH 1640-1516

dol. con. wh. f.x.l. suc.
scat. g. (1/2) stn. Sfo. odor
dol. tan, f.x.l. suc. Poorly dev.
fr. str. fof sfo; no odor.
dol. tan, f.x.l. suc. scat. pp.
few sandy; brown/golden brown str.
Sfo. odor.

DST #4 3347-335
30-30-30-30
Blow; weak
End opening; none
Rec; 3' very slight
cut/mud
(3% oil) 97% mud
pressures; ISIP 798 P
ISIP 716 P
ISIP 14-17 P
ISIP 15-16 P
HSH 1653-1619

aa. 1/2 wh/tan A
dol. tan, med x.l. scat. g.
fr. str. fof, no odor
+ A aa.

DST #5 3359-3375

30-30-60-60
Blow; weak (2 3/4")

End opening; weak (3 1/2")

Rec; 2' oil cut water (30% oil) 70% water.
58' muddy water

Pressures; ISIP 1063 Psi
ISIP 1067
ISIP 12-22
ISIP 22-37
HSH 1678-1627