

Crew								
Name	Arrive Wellsite	Depart Wellsite	Name	Arrive Wellsite	Depart Wellsite	Name	Arrive Wellsite	Depart Wellsite
William Kilmer	10/Jan/2013	24/Jan/2013	Brian Johnson	10/Jan/2013	24/Jan/2013			

Witness	
Name	LWD Run Number
Brant Segraat	1,2,3
Tony Laija	3,4,5,6

Mud Properties Record												
Date / Time	LWD Run No.	Measured Depth (ft.)	Mud Type	Density (ppg)	Viscosity (cp)	pH	Fluid Loss (cc)	Oil / Water	Source	Total Chlorides (ppm)	K+	(%)
10/Jan/2013 9:00	1	775	Water Based	8.4	5	11.0	0.0	0 / 99	Active Mud Pit	800		N/A
11/Jan/2013 9:00	2	1206	Water Based	8.8	5	9.5	0.0	0/97.7	Active Mud Pit	25000		N/A
15/Jan/2013 8:45	3	5375	Water Based	8.3	1	8.0	0.0	0/99.5	Active Mud Pit	800		N/A
18/Jan/2013 9:00	4	8496	Water Based	8.3	1	8.0	0.0	0/99.5	Active Mud Pit	1000		N/A
20/Jan/2013 9:00	5	10845	Water Based	8.3	1	9.0	0.0	0/99.5	Active Mud Pit	900		N/A
23/Jan/2012 8:00	6	12071	Water Based	8.3	1	9.0	0.0	0/99.5	Active Mud Pit	900		N/A

Mnemonics		
Curve	Description	Units
GRCX	Gamma Ray Corrected	API
TCDX	Downhole Temperature	degF
ROP_AVG	Rate of Penetration, 3.0 ft. Average	ft/hr
WOB_AVG	Weight on Bit, 1.0 ft. Average	kilbs
GRIX	Gamma Ray Data Density	unitless
GRTX	Gamma Ray Time Since Drilled	seconds

Equipment and Service Data						
LWD Run No.	Tool	Serial Number	Measurement	Bit Offset (ft)	Max O.D. (in.)	Min I.D. (in.)
1	LBLCP	12421474	Pulser	30.90	6.75	2.875
1	LBMWD	12200463	Gamma/Directional	24.12	6.75	2.875
1	LBSU	12244675	Steering Unit	7.43	6.75	2.875
2	LBLCP	11808690	Pulser	30.90	6.75	2.875

2	LBMWD	12418357	Gamma/Directional	24.12	6.75	2.875
2	LBSU	12536525	Steering Unit	7.43	6.75	2.875
3	DIR	12153771	Directional	39.56	4.75	2.6875
3	SRIG	12501268	Gamma	44.65	4.75	2.6875
4	DIR	12153771	Directional	39.62	4.75	2.6875
4	SRIG	12501268	Gamma	44.71	4.75	2.6875
5	DIR	12092235	Directional	40.00	4.75	2.6875
5	SRIG	10192235	Gamma	45.09	4.75	2.6875
6	DIR	12092235	Directional	39.97	4.75	2.6875
6	SRIG	10192235	Gamma	45.06	4.75	2.6875

Service and Tool Mnemonics

Mnemonic	Name	Description
LBLCP	Pulser	Telemetry Pulser in the AutoTrak Curve Assembly
LBMWD	MWD	Gamma and Directional sensor package in the AutoTrak Curve Assembly
LBSU	Steering Unit	AutoTrak Curve Steering Unit with Near Bit Inclination
DIR	Directional	Wellbore Directional Survey
SRIG	Inclination and Gamma	Probe Based Gamma Ray and Inclination Module

Comments

1)	Baker Hughes INTEQ run 1 utilized a 6 3/4 inch NaviGamma Service (Directional and Gamma Ray) atop a 8 3/4 inch bit and AutoTrack assembly. This assembly failed on surface therefore there is no Gamma logging for this run.
2)	Baker Hughes INTEQ run 2 utilized a 6 3/4 inch NaviGamma Service (Directional and Gamma Ray) atop a 8 3/4 inch bit and AutoTrack assembly. from 775 to 5304 feet MD (775 to 4871 feet TVD). Gamma logging began at 3288 MD (3287 TVD).
3)	Baker Hughes INTEQ runs 3 through 6 utilized a 4 3/4 inch NaviGamma Service (Directional and Gamma Ray) atop a 6 1/8 inch bit and a 4 3/4 inch steerable assembly from 5304 to 12423 feet MD (4871 to 4840 feet TVD).
4)	Depth measurements were obtained from a depth control system not supplied by Baker Hughes INTEQ. Due to lack of control by Baker Hughes INTEQ logging engineers, depth calculations and measurements could not be independently verified and the unverified depths are supplied to INTEQ are being used to present logging data.
5)	A sliding indicator is shown on the left edge of track 1 as a heavy line. This line has been depth shifted to the Gamma Ray sensor. to correspond with Gamma Ray data acquired while sliding.

Remarks

Number	Measured Depth (ft)	Hole Section (in.)	LWD Run No.	Remark
1	5304	8.75	2	The interval from 5294 to 5304 feet MD (4870 to 4871 feet TVD) was logged up to 39 hours after drilling due to a trip to place casing and to pick up a new Bit, Motor, and MWD.
2	8198	6.125	3	The interval from 8153 to 8198 feet MD (4879 to 4876 feet TVD) was logged up to 14 hours after drilling due to a trip to place casing and to pick up a new Bit and Motor.

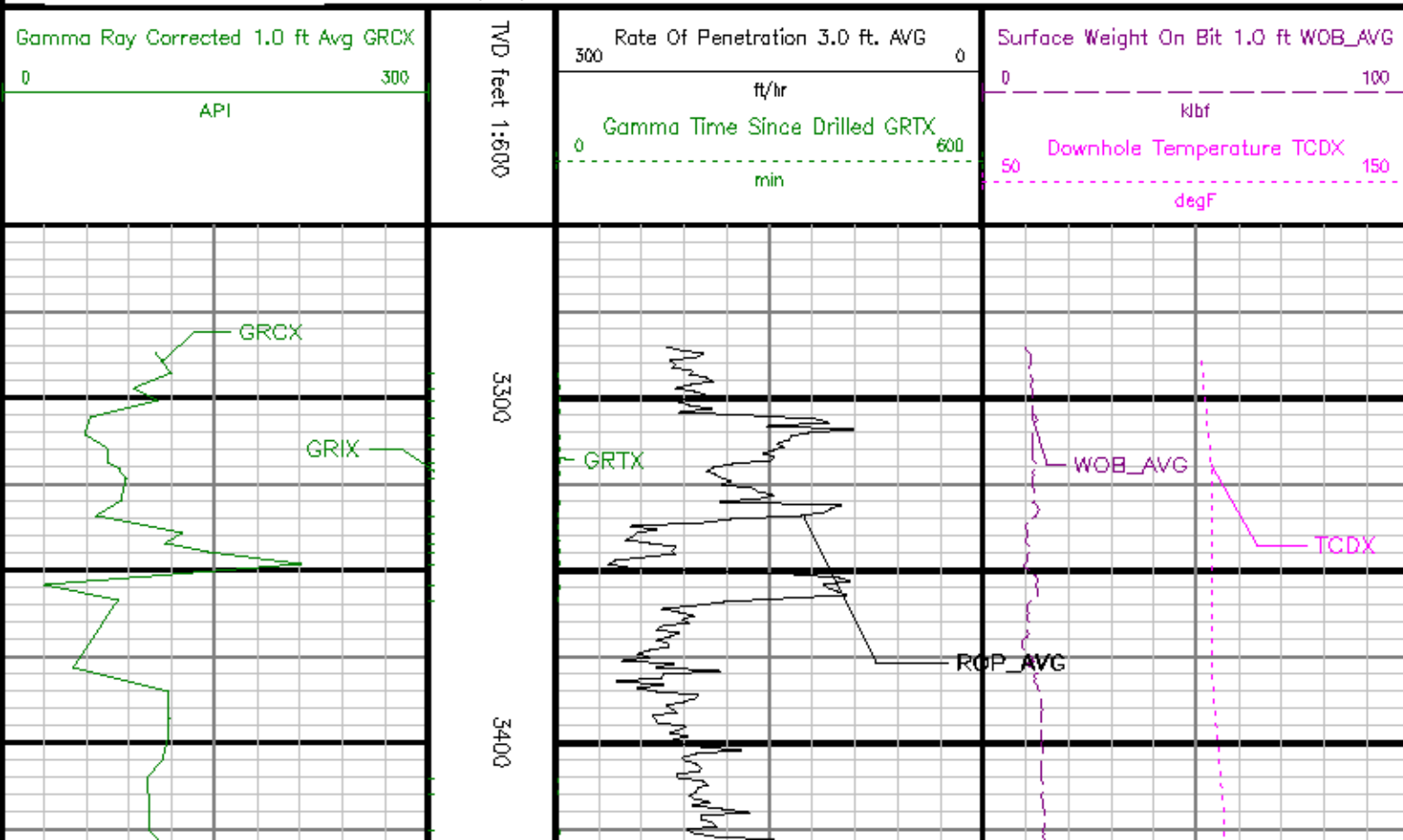
3	10845	6.125	4	The interval from 10800 to 10845 feet MD (4859 to 4855 feet TVD) was logged up to 15 hours after drilling due to a trip to pick up a new Bit and MWD.
4	11188	6.125	5	The interval from 11143 to 11185 feet MD (4853 to 4854 feet TVD) was logged up to 16 hours after drilling due to a trip to pick up a new Bit and Motor.
5	12422	6.125	6	The interval from 12377 to 12422 feet MD (4843 to 4840 feet TVD) was not logged due to Gamma Ray sensor to bit offset at well TD.

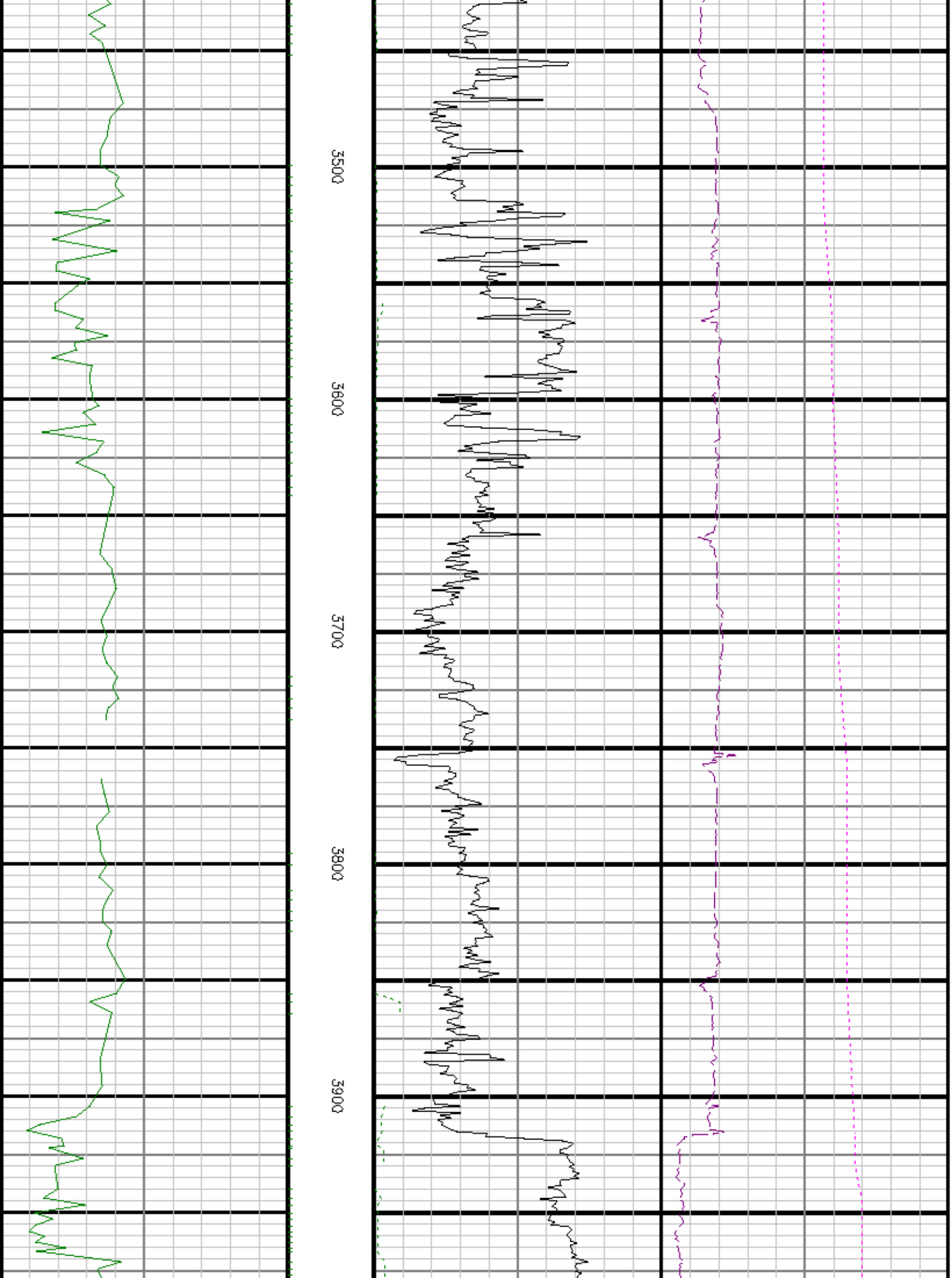
Curve Mnemonics

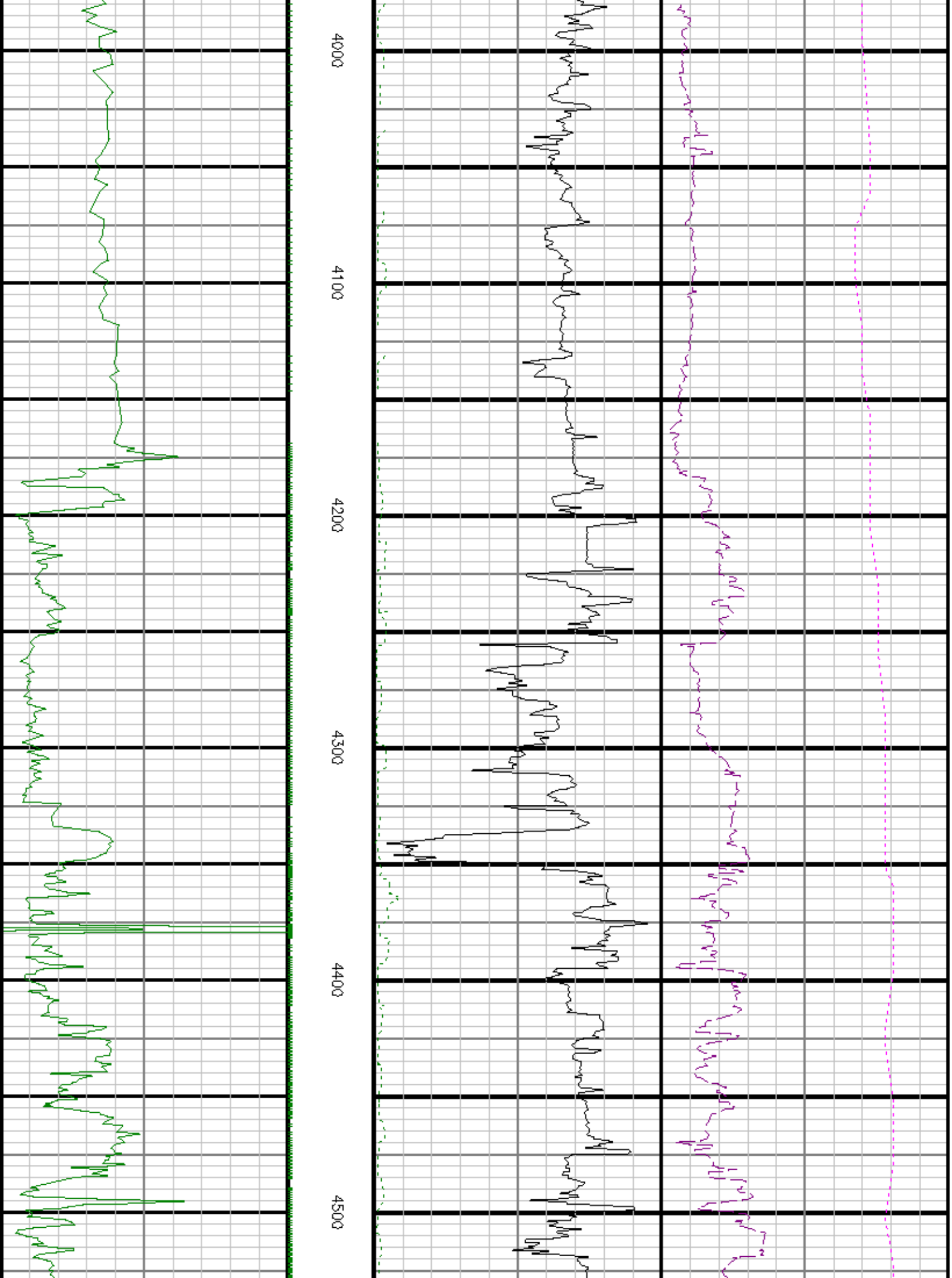
Curve	Description	Units
GRCX	Gamma Ray - Corrected	API
GRIX	Gamma Ray - Data Point Indicator	unitless
GRTX	Gamma Time Since Drilled	min
ROP_AVG	Depth Averaged ROP	ft/hr
TCDX	Downhole Temperature	degF
WOB_AVG	AVERAGE Weight On Bit	klbf

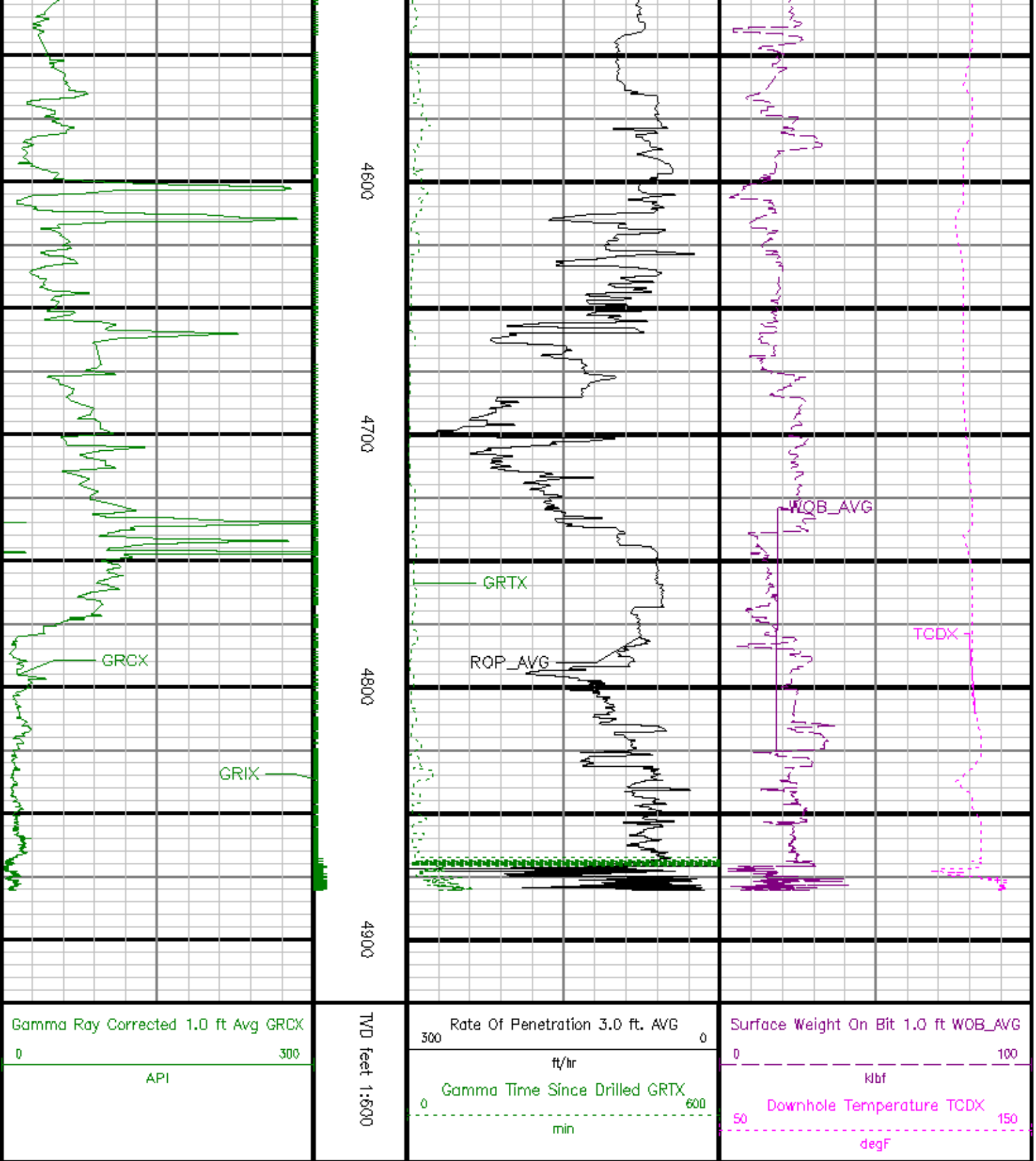


Company : SandRidge Energy
 Well : Bryant 350B 1-10H
 Interval : 3250.00 - 4925.00 feet
 Created : 23/Jan/2013 8:49:03 PM









ADVANTAGE Final Survey Listing

Operator : Sanakridge Energy Field : Harper County
 Well : Bryant 3508 1-10H Rig : Unit 310
 Wellbore : Bryant 3508 1-10H Orig Hole Job : 5202801

Well Origin

Latitude	37.02 deg	Longitude	-98.18 deg
North Reference	Grid	Drill Depth Zero	NULL
Vertical Datum is	Mean Sea Level	Vertical Datum to DDZ	1300.00 ft
Vertical Section North	0.00 ft	Vertical Section East	0.00 ft
Vertical Section Azimuth	179.31 deg	Vertical Section Depth	0.00ft
Grid Convergence	-0.20 deg	Magnetic Declination	4.68 deg
Total Correction	4.48 deg	TVD Calculation Method	Minimal Curvature
D-raw Calculation	Magcarr1	Local Magnetic Field	51719 nT
Local Magnetic Dip Angle	65.16 deg	Local Gravity Field	9.798 m/s^2

Tie	MD ft	Incl deg	Azim deg	North ft	East ft	TVD ft	VS ft	Incr VS ft	Crs Len ft	DLS deg/100ft	Build deg/100ft	Turn deg/100ft
-----	----------	-------------	-------------	-------------	------------	-----------	----------	---------------	---------------	------------------	--------------------	-------------------

0.00	0.00	0.00	0.00	0.00	0.00	0.00	0.00	0.00				
15.00	0.00	0.00				15.00			15.00			
250.00	0.80	138.28	-1.22	1.09	249.99	1.24	1.64	235.00	0.34	0.34	58.84	
500.00	0.80	138.28	-3.83	3.41	499.97	3.87	5.13	250.00	0.00	0.00	0.00	
775.00	0.30	138.28	-5.80	5.17	774.95	5.86	7.77	275.00	0.18	-0.18	0.00	
815.00	0.19	138.28	-5.93	5.28	814.95	5.99	7.94	40.00	0.28	-0.28	-0.01	
907.00	0.07	327.89	-5.99	5.36	906.95	6.06	8.04	92.00	0.28	-0.13	-185.21	
999.00	0.45	64.25	-5.79	5.65	998.95	5.85	8.40	92.00	0.51	0.42	104.74	
1090.00	0.34	126.22	-5.79	6.20	1089.95	5.87	8.95	91.00	0.46	-0.12	88.10	
1182.00	0.15	278.63	-5.94	6.30	1181.95	6.01	9.12	92.00	0.53	-0.21	165.86	
1274.00	0.12	31.84	-5.83	6.23	1273.95	5.91	9.25	92.00	0.25	-0.03	123.05	
1366.00	0.07	324.80	-5.70	6.25	1365.95	5.78	9.38	92.00	0.13	-0.08	-73.09	
1458.00	0.16	183.37	-5.78	6.26	1457.95	5.86	9.45	92.00	0.24	0.10	-175.25	
1551.00	0.22	187.76	-6.08	6.27	1550.95	6.15	9.75	93.00	0.11	0.07	26.23	
1643.00	0.29	276.05	-6.23	6.01	1642.95	6.30	10.05	92.00	0.39	0.08	95.96	
1735.00	0.06	0.46	-6.15	5.78	1734.95	6.22	10.29	92.00	0.32	-0.25	91.76	
1828.00	0.21	74.11	-6.06	5.94	1827.95	6.13	10.46	93.00	0.21	0.16	79.19	
1923.00	0.34	162.97	-6.28	6.19	1922.95	6.35	10.81	95.00	0.42	0.14	93.54	
2018.00	0.04	122.70	-6.57	6.30	2017.95	6.64	11.12	95.00	0.32	-0.31	-42.39	
2113.00	0.20	30.97	-6.45	6.42	2112.95	6.52	11.29	95.00	0.21	0.16	-96.56	
2207.00	0.28	77.93	-6.26	6.73	2206.95	6.34	11.65	94.00	0.22	0.09	49.96	
2302.00	0.30	93.46	-6.23	7.21	2301.95	6.31	12.13	95.00	0.09	0.02	16.34	
2397.00	0.24	98.61	-6.27	7.66	2396.94	6.36	12.58	95.00	0.07	-0.07	5.42	
2492.00	0.61	127.37	-6.61	8.26	2491.94	6.71	13.27	95.00	0.44	0.39	30.27	
2587.00	0.13	134.48	-6.99	8.74	2586.94	7.10	13.89	95.00	0.51	-0.51	7.48	
2682.00	0.31	93.67	-7.08	9.07	2681.94	7.19	14.23	95.00	0.24	0.19	-42.95	
2776.00	0.39	134.77	-7.33	9.56	2775.94	7.44	14.77	94.00	0.27	0.09	43.73	
2871.00	0.63	255.49	-7.69	9.27	2870.93	7.80	15.22	95.00	0.95	0.26	127.07	
2966.00	0.31	318.40	-7.63	8.59	2965.93	7.73	15.90	95.00	0.60	-0.34	68.22	
3061.00	0.26	347.39	-7.22	8.37	3060.93	7.32	16.36	95.00	0.16	-0.05	30.52	
3156.00	0.50	159.24	-7.40	8.47	3155.93	7.50	16.56	95.00	0.80	0.25	180.89	
3251.00	0.23	116.07	-7.67	8.79	3250.93	7.97	17.14	95.00	0.39	-0.28	-45.44	
3346.00	0.25	143.59	-8.12	9.09	3345.93	8.23	17.53	95.00	0.12	0.01	28.97	
3441.00	0.15	149.53	-8.40	9.28	3440.93	8.51	17.86	95.00	0.10	-0.10	6.25	
3535.00	0.07	97.51	-8.51	9.40	3534.93	8.63	18.03	94.00	0.13	-0.09	-55.35	
3630.00	0.29	71.71	-8.44	9.68	3629.93	8.56	18.32	95.00	0.24	0.24	-27.15	
3725.00	0.18	229.29	-8.46	9.80	3724.93	8.58	18.44	95.00	0.49	-0.12	165.87	
3820.00	0.77	228.71	-8.98	9.21	3819.92	9.09	19.23	95.00	0.62	0.62	-0.62	
3915.00	0.26	204.55	-8.62	8.63	3914.92	9.72	20.09	95.00	0.55	-0.51	-25.43	
3947.00	1.18	182.33	-10.02	8.58	3946.91	10.13	20.50	32.00	2.90	2.82	-89.45	
3978.00	3.85	180.72	-11.38	8.56	3977.88	11.49	21.86	31.00	8.59	8.58	-5.20	
4010.00	6.17	178.58	-14.18	8.59	4009.78	14.28	24.65	32.00	7.28	7.26	-6.87	
4041.00	8.53	178.84	-18.14	8.67	4040.50	18.24	28.61	31.00	7.60	7.60	0.81	
4073.00	10.46	177.75	-23.42	8.83	4072.06	23.52	33.89	32.00	6.09	6.06	-3.58	
4104.00	12.01	177.44	-29.45	9.09	4102.47	29.56	39.93	31.00	4.99	4.99	-1.02	
4136.00	13.59	179.04	-36.54	9.30	4133.67	36.85	47.02	32.00	5.05	4.92	5.02	

4168.00	15.06	180.44	-44.45	9.33	4164.67	44.56	54.94	32.00	4.73	4.60	4.37	
4200.00	17.32	180.75	-53.38	9.24	4195.40	53.48	65.86	32.00	7.08	7.07	0.97	
4231.00	20.70	179.47	-63.47	9.23	4224.71	63.58	75.96	31.00	10.98	10.90	-4.14	
4263.00	23.26	179.08	-75.45	9.38	4254.38	75.56	86.93	32.00	8.01	8.00	-1.20	
Tie	MD ft	Incl deg	Azím deg	North ft	East ft	TVD ft	VS ft	Incr VS ft	Crș Len ft	DLS deg/100ft	Build deg/100ft	Turn deg/100ft
4295.00	26.06	178.44	-88.80	9.67	4283.46	88.91	99.28	32.00	8.77	8.73	-2.00	
4326.00	28.41	177.28	-102.97	10.21	4311.02	103.08	113.47	31.00	7.79	7.59	-3.76	
4358.00	29.84	177.19	-116.48	10.96	4339.00	118.80	126.99	32.00	3.85	3.85	-0.27	
4390.00	30.33	177.17	-134.45	11.74	4366.72	134.58	144.99	32.00	2.16	2.16	-0.08	
4421.00	31.91	178.45	-150.46	12.35	4393.25	150.60	161.01	31.00	5.51	5.08	4.14	
4453.00	34.22	178.49	-167.91	12.82	4420.07	168.06	178.47	32.00	7.24	7.24	0.12	
4484.00	36.87	179.87	-185.93	13.07	4445.29	186.07	196.49	31.00	8.92	8.54	4.46	
4516.00	39.74	181.12	-205.76	12.89	4470.40	205.90	216.32	32.00	9.30	8.98	3.93	
4547.00	42.06	181.67	-226.05	12.39	4493.63	226.19	236.62	31.00	7.56	7.47	1.77	
4579.00	43.11	181.23	-247.70	11.85	4517.39	247.82	256.27	32.00	3.42	3.29	-1.37	
4611.00	43.75	181.44	-269.69	11.33	4540.63	269.81	280.27	32.00	2.05	2.01	0.64	
4642.00	44.40	181.21	-291.25	10.83	4562.90	291.36	301.83	31.00	2.13	2.07	-0.74	
4674.00	45.84	180.70	-313.92	10.46	4585.48	314.02	324.51	32.00	4.65	4.51	-1.81	
4705.00	48.35	181.28	-336.82	10.06	4606.58	336.72	347.21	31.00	8.22	8.10	1.89	
4769.00	49.77	181.39	-384.95	8.93	4648.52	385.03	395.55	64.00	2.22	2.22	0.17	
4863.00	50.52	181.65	-457.09	7.02	4708.76	457.14	467.71	94.00	0.83	0.80	0.28	
4895.00	50.61	181.51	-481.79	6.34	4729.08	481.83	492.43	32.00	0.44	0.26	-0.46	
4927.00	52.55	181.70	-506.85	5.63	4748.97	506.88	517.50	32.00	6.09	6.07	0.61	
4958.00	55.84	181.25	-531.98	4.99	4767.10	532.00	542.64	31.00	10.69	10.62	-1.46	
4990.00	59.42	180.72	-559.00	4.52	4784.23	559.02	569.66	32.00	11.28	11.17	-1.87	
5022.00	62.24	179.52	-586.94	4.47	4799.83	586.95	597.80	32.00	9.42	8.83	-3.75	
5053.00	65.40	177.71	-614.75	5.15	4813.50	614.76	625.41	31.00	11.44	10.17	-5.83	
5085.00	68.74	177.05	-644.18	6.50	4825.97	644.21	654.88	32.00	10.63	10.46	-2.07	
5117.00	71.81	176.88	-674.26	8.15	4836.77	674.31	685.00	32.00	9.66	9.60	-1.16	
5148.00	74.48	176.32	-703.87	9.97	4845.75	703.94	714.67	31.00	8.67	8.61	-1.14	
5180.00	76.61	175.79	-734.78	12.10	4853.74	734.87	745.65	32.00	6.84	6.65	-1.67	
5211.00	78.94	176.58	-765.01	14.11	4860.30	765.12	775.95	31.00	7.93	7.53	2.56	
5243.00	81.63	176.76	-796.49	15.95	4865.70	796.63	807.48	32.00	8.41	8.39	0.57	
5274.00	84.70	176.97	-827.22	17.63	4869.39	827.37	838.26	31.00	9.93	9.90	0.66	
5312.00	88.95	177.44	-865.11	19.48	4871.50	865.28	876.19	38.00	11.28	11.19	1.25	
5375.00	88.95	176.10	-928.00	23.03	4872.65	928.21	939.18	63.00	2.12	-0.00	-2.12	
5438.00	89.94	176.21	-990.85	27.25	4873.26	991.11	1002.18	63.00	1.58	1.57	0.18	
5502.00	90.06	177.00	-1054.74	31.04	4873.28	1055.04	1066.18	64.00	1.24	0.19	1.25	
5597.00	90.46	176.91	-1149.60	36.09	4872.83	1149.95	1161.17	95.00	0.43	0.42	-0.09	
5691.00	91.17	176.94	-1243.46	41.13	4871.49	1243.86	1255.16	94.00	0.76	0.76	0.03	
5786.00	89.69	177.16	-1338.33	46.01	4870.77	1338.78	1350.16	95.00	1.58	-1.56	0.25	
5880.00	88.73	178.27	-1432.24	49.76	4872.07	1432.74	1444.15	94.00	1.56	-1.01	1.18	
5975.00	89.29	178.11	-1527.18	52.77	4873.71	1527.70	1539.13	95.00	0.60	0.58	-0.17	
6070.00	89.11	177.42	-1622.10	56.48	4875.04	1622.66	1634.12	95.00	0.75	-0.19	-0.72	
6165.00	90.87	179.87	-1717.08	58.72	4875.07	1717.64	1729.11	95.00	3.18	1.85	2.56	
6260.00	91.27	179.37	-1812.04	59.36	4873.30	1812.62	1824.10	95.00	0.68	0.42	-0.53	
6355.00	91.11	178.45	-1907.00	61.16	4871.33	1907.60	1919.07	95.00	0.97	-0.17	-0.96	
6450.00	90.41	179.80	-2001.98	62.61	4870.07	2002.59	2014.06	95.00	1.60	-0.74	1.42	
6544.00	87.86	179.17	-2096.96	63.45	4871.50	2096.57	2108.04	94.00	2.79	-2.71	-0.67	
6639.00	91.24	180.12	-2190.94	64.04	4872.25	2191.55	2203.03	95.00	3.70	3.56	1.01	
6734.00	90.82	179.50	-2285.92	64.36	4870.54	2286.53	2298.01	95.00	0.79	-0.44	-0.66	
6828.00	90.22	178.80	-2379.90	65.75	4869.68	2380.52	2392.00	94.00	0.98	-0.65	-0.74	
6923.00	90.41	178.01	-2474.87	68.39	4869.16	2475.51	2487.00	95.00	0.85	0.20	-0.83	
7018.00	89.56	176.92	-2569.77	72.59	4869.19	2570.46	2582.00	95.00	1.45	-0.89	-1.15	
7113.00	87.30	178.64	-2664.65	76.26	4871.78	2665.38	2676.96	95.00	2.99	-2.38	1.81	
Tie	MD ft	Incl deg	Azím deg	North ft	East ft	TVD ft	VS ft	Incr VS ft	Crș Len ft	DLS deg/100ft	Build deg/100ft	Turn deg/100ft
7208.00	88.14	180.53	-2759.57	76.94	4875.56	2760.30	2771.87	95.00	2.17	0.87	1.96	
7302.00	90.83	182.28	-2853.53	74.64	4876.41	2854.22	2865.86	94.00	3.42	2.87	1.86	
7397.00	89.29	180.67	-2948.49	72.19	4876.31	2949.14	2960.85	95.00	2.35	-1.62	-1.69	
7491.00	86.89	180.72	-3042.47	71.05	4877.60	3043.11	3054.84	94.00	0.43	-0.42	0.05	
7555.00	89.26	181.98	-3106.44	69.54	4878.83	3107.05	3118.83	84.00	2.04	0.58	1.96	

7618.00	89.85	182.11	-3169.40	67.30	4879.32	3169.98	3181.83	63.00	0.95	0.93	0.21	
7681.00	88.64	180.29	-3232.38	65.98	4880.16	3232.94	3244.82	63.00	3.47	-1.92	-2.89	
7744.00	91.09	182.84	-3295.34	64.26	4880.31	3295.88	3307.81	63.00	5.62	3.89	4.05	
7807.00	91.02	182.15	-3358.27	61.51	4879.15	3358.77	3370.80	63.00	1.10	-0.11	-1.10	
7871.00	90.38	181.15	-3422.24	59.67	4878.37	3422.71	3434.79	64.00	1.86	-1.00	-1.57	
7986.00	88.21	182.04	-3517.19	57.03	4879.54	3517.62	3529.78	95.00	2.47	-2.28	0.94	
8029.00	89.85	182.00	-3580.14	54.81	4880.60	3580.54	3592.77	63.00	2.60	2.59	-0.05	
8092.00	91.06	181.43	-3643.11	52.93	4880.10	3643.48	3655.76	63.00	2.13	1.93	-0.91	
8181.00	89.85	179.81	-3732.10	52.12	4879.40	3732.45	3744.76	89.00	2.46	-1.38	-2.05	
8228.00	91.18	179.94	-3779.09	52.31	4878.98	3779.45	3791.75	47.00	2.92	2.83	0.72	
8289.00	92.86	179.80	-3840.05	52.44	4876.83	3840.41	3852.71	61.00	2.78	2.77	-0.23	
8381.00	92.54	179.58	-3931.95	52.93	4872.50	3932.30	3944.61	92.00	0.43	-0.36	-0.25	
8442.00	91.95	179.20	-3992.90	53.58	4870.11	3993.25	4005.56	81.00	1.14	-0.98	-0.82	
8503.00	90.83	179.56	-4053.88	54.24	4868.63	4054.23	4066.54	61.00	1.92	-1.83	0.58	
8594.00	91.68	179.03	-4144.85	55.36	4866.63	4145.21	4157.52	91.00	1.10	0.93	-0.58	
8686.00	90.49	179.23	-4236.82	56.75	4864.88	4237.19	4249.50	92.00	1.31	-1.29	0.21	
8778.00	91.06	178.93	-4328.80	58.23	4863.64	4329.18	4341.49	92.00	0.70	0.61	-0.33	
8870.00	90.83	179.21	-4420.77	59.73	4862.12	4421.17	4433.48	92.00	0.39	-0.24	0.31	
8901.00	89.60	179.85	-4451.77	60.04	4862.00	4452.17	4464.48	31.00	4.22	-3.98	1.42	
8982.00	89.10	181.01	-4512.78	59.89	4862.69	4513.15	4525.47	81.00	2.37	-0.81	2.22	
9053.00	89.63	179.90	-4603.75	58.96	4863.70	4604.13	4616.47	91.00	1.34	0.58	-1.21	
9145.00	90.06	179.43	-4695.75	59.49	4863.95	4696.13	4708.47	92.00	0.70	0.47	-0.51	
9237.00	89.41	179.28	-4787.74	60.52	4864.37	4788.12	4800.46	92.00	0.72	-0.70	-0.16	
9329.00	88.43	179.50	-4879.72	61.50	4866.10	4880.11	4892.45	92.00	1.10	-1.07	0.23	
9421.00	88.89	179.54	-4971.69	62.27	4868.26	4972.08	4984.42	92.00	0.51	0.50	0.05	
9513.00	90.22	179.92	-5063.68	62.71	4868.98	5064.07	5076.42	92.00	1.50	1.45	0.41	
9604.00	90.82	178.10	-5154.68	64.28	4868.32	5155.07	5167.41	91.00	2.05	0.44	-2.00	
9696.00	90.19	177.38	-5246.59	67.90	4867.68	5247.03	5259.41	92.00	0.91	-0.47	-0.78	
9788.00	88.99	175.45	-5338.40	73.65	4868.34	5338.90	5351.40	92.00	2.47	-1.30	-2.10	
9849.00	90.69	176.96	-5399.28	77.69	4868.51	5399.81	5412.39	81.00	3.73	2.79	2.47	
9880.00	90.12	176.36	-5430.21	79.49	4868.30	5430.77	5443.39	31.00	2.66	-1.82	-1.95	
9975.00	88.55	175.45	-5524.96	86.28	4869.39	5525.60	5538.38	95.00	1.91	-1.65	-0.95	
10070.00	89.07	176.07	-5619.88	93.30	4871.36	5620.39	5633.36	95.00	0.85	0.55	0.86	
10133.00	90.06	176.73	-5682.55	97.26	4871.84	5683.31	5696.36	63.00	1.89	1.57	1.05	
10165.00	90.12	176.97	-5714.50	99.02	4871.79	5715.28	5728.36	32.00	0.80	0.19	0.78	
10260.00	91.55	178.87	-5809.42	102.63	4870.40	5810.23	5823.34	95.00	2.33	1.50	1.79	
10355.00	89.91	177.72	-5904.38	105.62	4869.20	5905.20	5918.33	95.00	1.99	-1.72	-1.00	
10449.00	89.72	177.87	-5998.29	109.23	4869.50	5999.17	6012.33	94.00	0.25	-0.20	0.16	
10544.00	90.09	178.53	-6093.24	112.21	4869.68	6094.15	6107.33	95.00	0.80	0.39	0.69	
10639.00	92.15	179.49	-6188.20	113.86	4867.80	6189.12	6202.31	95.00	2.39	2.16	1.00	
10734.00	93.21	179.95	-6283.09	114.33	4863.35	6284.01	6297.20	95.00	1.22	1.12	0.48	
10829.00	92.45	179.47	-6377.98	114.81	4858.66	6378.90	6392.08	95.00	0.94	-0.80	-0.50	
10924.00	91.85	181.58	-6472.90	113.93	4855.09	6473.80	6487.01	95.00	2.30	-0.64	2.22	
11019.00	90.22	182.51	-6567.82	110.54	4853.38	6568.67	6581.99	95.00	1.98	-1.72	0.98	
11114.00	89.54	182.36	-6662.73	106.50	4853.58	6663.53	6676.99	95.00	0.74	-0.72	-0.16	
Tie	MD	Incl	Azim	North	East	TVD	VS	Incr VS	Crs Len	DLS	Build	Turn
	ft	deg	deg	ft	ft	ft	ft	ft	ft	deg/100ft	deg/100ft	deg/100ft
11145.00	89.50	182.17	-6693.71	105.28	4853.84	6694.49	6707.99	31.00	0.61	-0.11	-0.60	
11208.00	89.75	182.44	-6756.65	102.74	4854.25	6757.40	6770.99	63.00	0.59	0.40	0.43	
11303.00	89.51	182.51	-6851.58	98.63	4854.86	6852.25	6865.98	95.00	0.27	-0.28	0.07	
11398.00	89.48	182.26	-6946.48	94.67	4855.70	6947.11	6960.98	95.00	0.27	-0.03	-0.27	
11483.00	90.43	182.30	-7041.40	90.89	4855.78	7041.98	7055.98	95.00	1.01	1.00	0.04	
11588.00	89.78	181.74	-7136.34	87.54	4855.60	7136.88	7150.98	95.00	0.90	-0.68	-0.59	
11683.00	89.97	181.73	-7231.30	84.66	4855.80	7231.79	7245.98	95.00	0.19	0.19	-0.01	
11778.00	90.18	182.21	-7326.24	81.40	4855.68	7326.69	7340.98	95.00	0.55	0.23	0.50	
11873.00	91.08	182.11	-7421.17	77.82	4854.63	7421.58	7435.97	95.00	0.94	0.84	-0.10	
11968.00	90.40	181.95	-7516.10	74.45	4853.40	7516.45	7530.96	95.00	0.73	-0.71	-0.17	
12063.00	90.83	181.16	-7611.06	71.88	4852.38	7611.37	7625.96	95.00	0.95	0.45	-0.83	
12157.00	91.26	181.22	-7705.02	69.93	4850.67	7705.30	7719.94	94.00	0.46	0.46	0.07	
12252.00	91.79	181.72	-7799.96	67.49	4848.14	7800.20	7814.91	95.00	0.76	0.55	0.52	
12347.00	92.46	181.65	-7894.85	64.70	4844.62	7895.05	7909.84	95.00	0.72	0.71	-0.08	
12379.00	92.96	181.49	-7926.80	63.83	4843.11	7926.99	7941.80	32.00	1.61	1.54	-0.47	
Projection to TD:												

12422.00	92.96	181.49	-7969.73	62.71	4840.89	7969.91	7984.75	43.00	0.00	0.00	0.00
----------	-------	--------	----------	-------	---------	---------	---------	-------	------	------	------