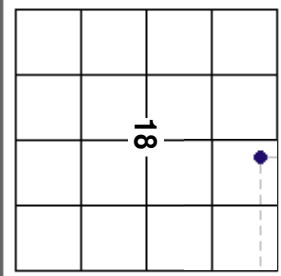




GEOLOGICAL REPORT
DRILLING TIME AND SAMPLE LOG

OPERATOR McCoy Petroleum Corporation
 LEASE Yost 'G' WELL # 1-18
 FIELD Wildcat
 LOCATION 660' FNL & 2280' FEEL
 SECTION 18 TOWNSHIP 27S RANGE 29W
 COUNTY Gray STATE KS
 API # 15 - 069 - 20419
 CONTRACTOR Sterling Drilling Co. RIG NO. 5
 COMMENCED DRILLING December 14, 2012
 COMPLETED DRILLING December 29, 2012
 RTD 5,250 FEET LTD 5,249 FEET
 MUD UP AT 3,043 FEET MUD TYPE Chemical
 SAMPLES SAVED FROM 4,000 TO 5,250
 DRILLING TIME KEPT FROM 3,900 TO 5,250
 SAMPLES EXAMINED FROM 4,000 TO 5,250
 GEOLOGICAL SUPERVISION FROM 4,000 TO 5,250
 GEOLOGIST ON WELL Evan Stone

ELEVATIONS
 K.B. 2,763 FEET
 G.L. 2,750 FEET
 ALL MEASUREMENTS FROM K.B.
 CASING
 Surface: 8-5/8" @ 1827'
 ELECTRICAL SURVEYS
 Weatherford Wireline
 Neutron-Density
 Dual Induction
 Microlog



DRILL STEM TESTING BY Trilobite Testing, Inc.
 GAS DETECTOR TookeDAQ System

ROCK TYPES

- | | | | | |
|-------|-------|--------|------------|--------|
| Anhy | Congl | Sandy | Carb shale | Siltst |
| Bent | Dol | Shlylm | Red shale | Ss |
| Brec | Gyp | Meta | Brn shale | Till |
| Cht | Igne | Mrlst | Grn shale | |
| Clyst | Lmst | Salt | Shcol | |
| Coal | Chtlm | Shale | Shgy | |

ACCESSORIES

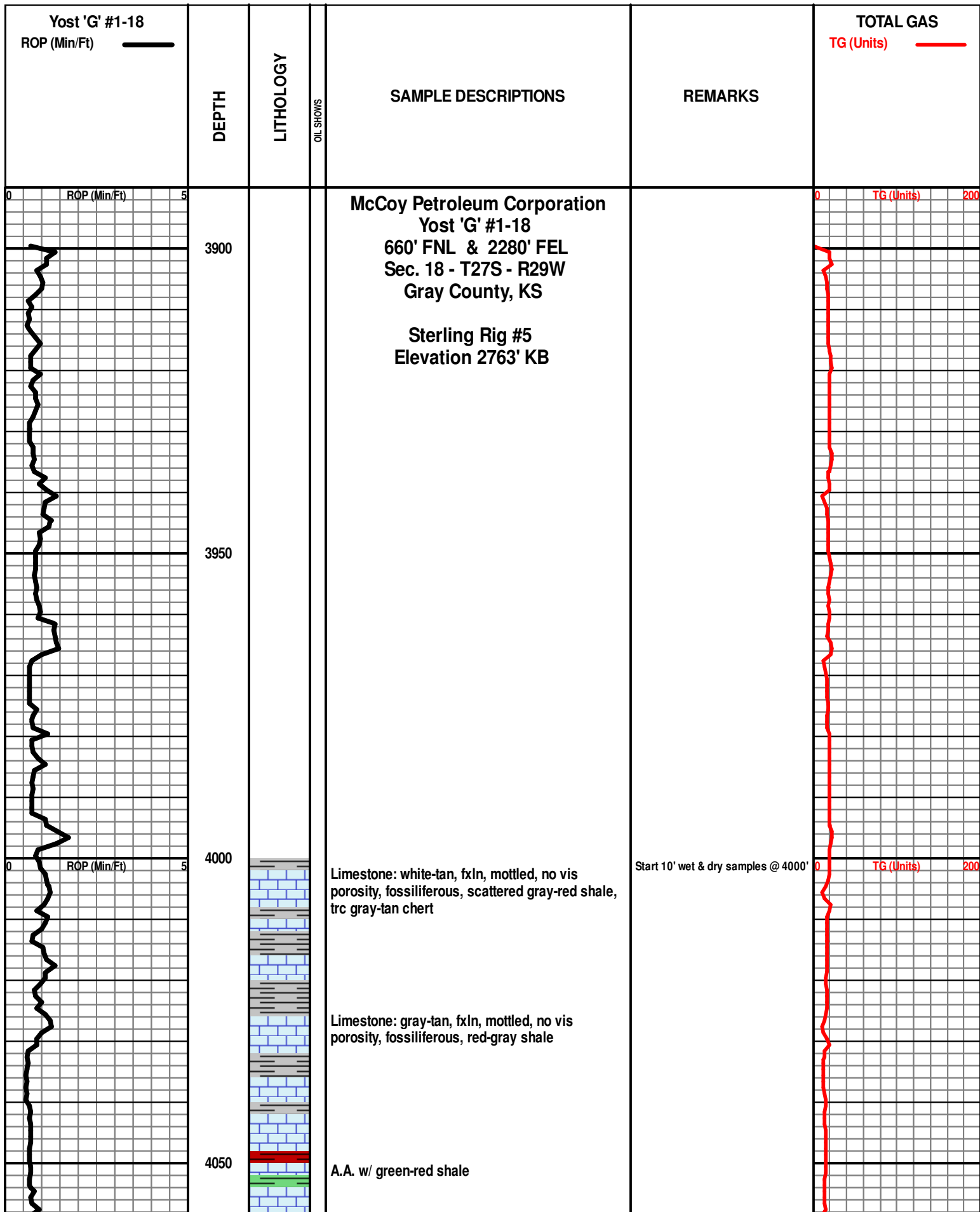
- | | | | | |
|----------------|----------|-----------------|----------------|----------|
| MINERAL | Feldspar | Salt | Dol | Finexln |
| Anhy | Ferrpel | Sandy | Gyp | Grainst |
| Arggrn | Ferr | Silt | Ls | Lithogr |
| Arg | Glau | Sil | Mrst | Microxln |
| Bent | Gyp | Sulphur | Sltstrg | Mudst |
| Bit | Hvymin | Tuff | Ssstrg | Packst |
| Brecfrag | Kaol | STRINGER | | Wackest |
| Calc | Marl | Anhy | TEXTURE | |
| Carb | Minxl | Arg | Boundst | |
| Chtdk | Nodule | Bent | Chalky | |
| Chtlt | Phos | Coal | Cryxln | |
| Dol | Pyr | | Earthy | |

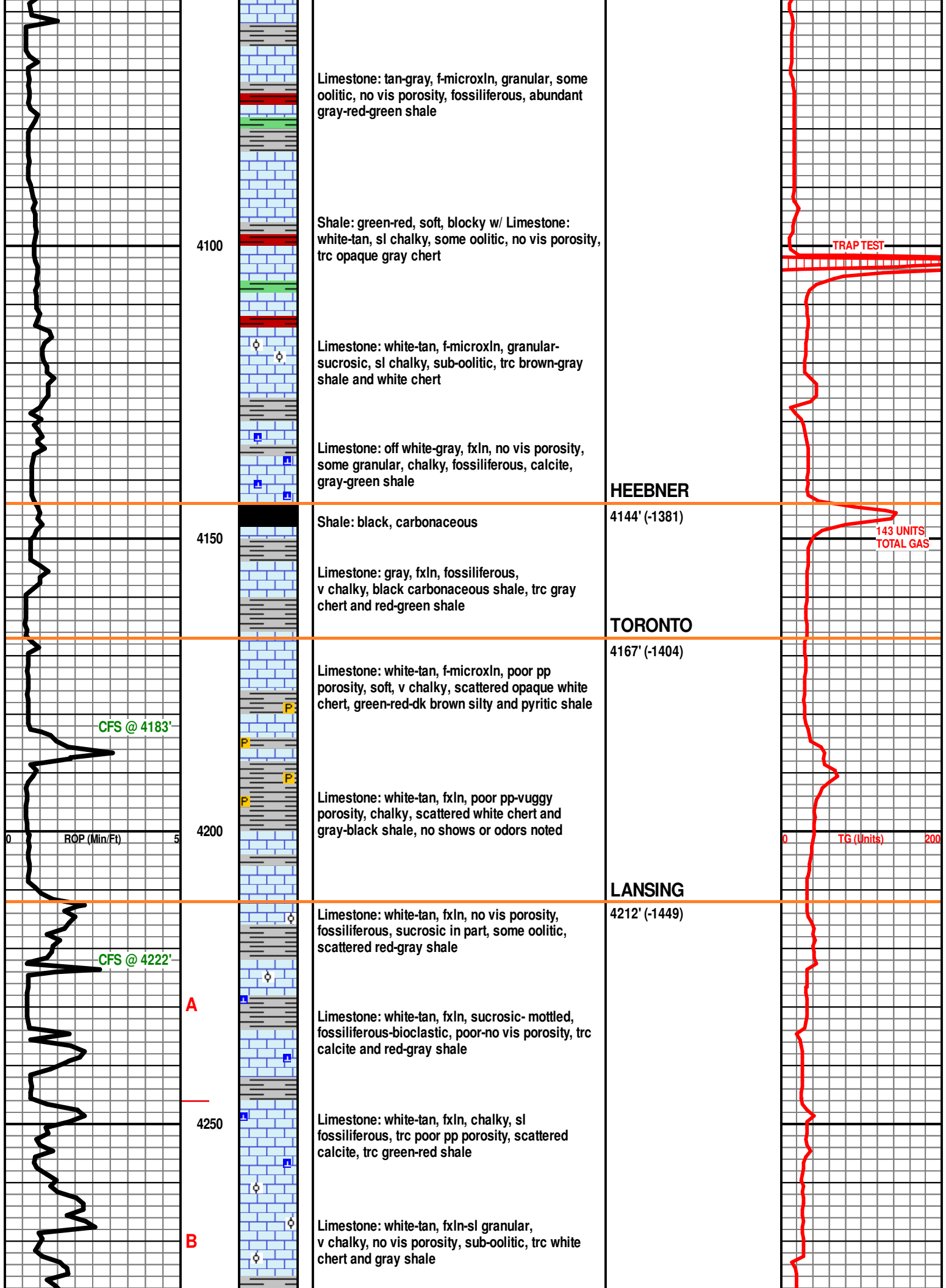
OTHER SYMBOLS

OIL/GAS SHOW
 Gas show
 Good

Fair
 Poor
 Dead

INTERVAL
 Porosity
 Dst





Limestone: tan-gray, f-microxln, granular, some oolitic, no vis porosity, fossiliferous, abundant gray-red-green shale

4100

Shale: green-red, soft, blocky w/ Limestone: white-tan, sl chalky, some oolitic, no vis porosity, trc opaque gray chert

Limestone: white-tan, f-microxln, granular-sucrosic, sl chalky, sub-oolitic, trc brown-gray shale and white chert

Limestone: off white-gray, fxln, no vis porosity, some granular, chalky, fossiliferous, calcite, gray-green shale

HEEBNER

4150

Shale: black, carbonaceous

4144' (-1381)

Limestone: gray, fxln, fossiliferous, v chalky, black carbonaceous shale, trc gray chert and red-green shale

TORONTO

CFS @ 4183'

4200

Limestone: white-tan, f-microxln, poor pp porosity, soft, v chalky, scattered opaque white chert, green-red-dk brown silty and pyritic shale

4167' (-1404)

Limestone: white-tan, fxln, poor pp-vuggy porosity, chalky, scattered white chert and gray-black shale, no shows or odors noted

LANSING

CFS @ 4222'

A

Limestone: white-tan, fxln, no vis porosity, fossiliferous, sucrosic in part, some oolitic, scattered red-gray shale

4212' (-1449)

Limestone: white-tan, fxln, sucrosic- mottled, fossiliferous-bioclastic, poor-no vis porosity, trc calcite and red-gray shale

4250

Limestone: white-tan, fxln, chalky, sl fossiliferous, trc poor pp porosity, scattered calcite, trc green-red shale

B

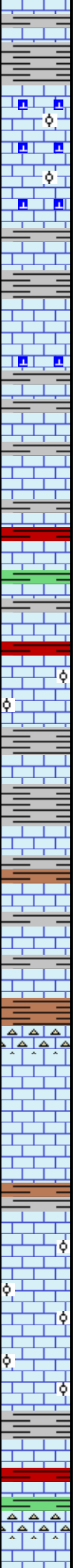
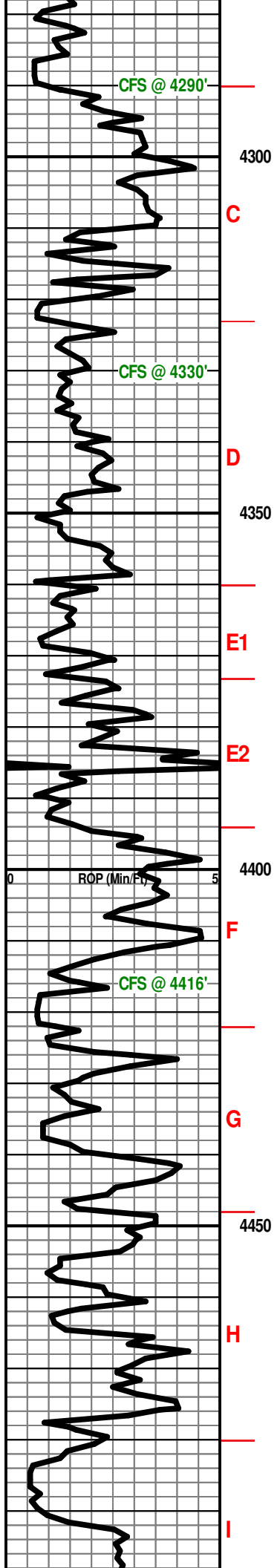
Limestone: white-tan, fxln-sl granular, v chalky, no vis porosity, sub-oolitic, trc white chert and gray shale

TRAP TEST

143 UNITS TOTAL GAS

0 TG (Units) 200

0 ROP (Min/Ft) 5



Shale: red-gray, soft, platy-fissile

Limestone: white-tan, f-microxln, dense, no vis porosity, sub-oolitic, sl fossiliferous, abundant calcite re-xln

Limestone: gray-tan, f-microxln, chalky, no vis porosity, sl fossiliferous, trc white-gray chert and gray-green shale

Limestone: gray-tan, fxln, sucrosic to sl chalky, some granular, no vis porosity, fossiliferous, calcite re-xln, trc gray shale

Limestone: gray-tan-off white, microxln, sl chalky, no vis porosity, sucrosic-granular, fossiliferous, trc tan-opaque gray chert and red-green shale

Limestone: gray-tan, microxln, dense, no vis porosity, sucrosic, some granular, oolitic in part, trc silty gray-red shale

Limestone: white-tan-gray, f-microxln, no vis porosity, granular, dense, siliceous in part, abundant white-gray-tan chert and gray-brown silty shale

Limestone: tan-white-gray, fxln, trc poor pp-interxln porosity, sli fossiliferous- bioclastic in part, chalky, calcite re-xln, intermixed w/ green-red shale, brown silty-sandy shale, and trc white-gray chert

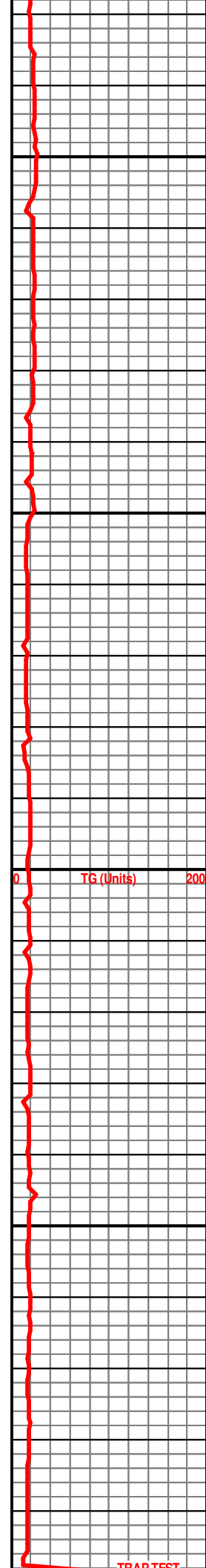
Limestone: gray-tan, f-microxln, no vis porosity, some granular-siliceous, oolitic in part, fossiliferous, trc calcite re-xln, abundant green-red shale, trc brown silty shale and white-gray chert

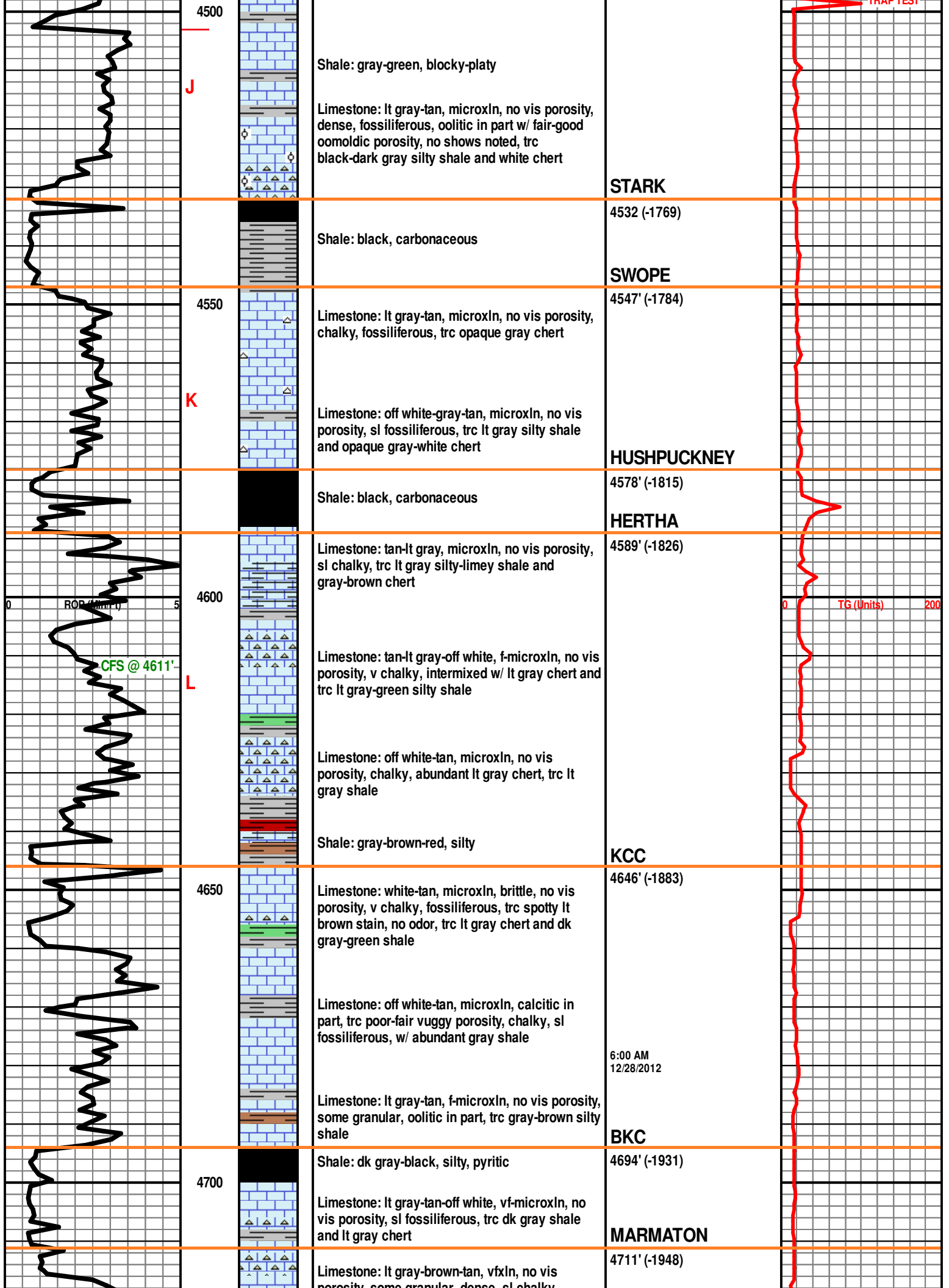
Limestone: tan-gray-off white, microxln, dense, no vis porosity, sl fossiliferous, sl chalky, some oolitic w/ poor interoolitic porosity

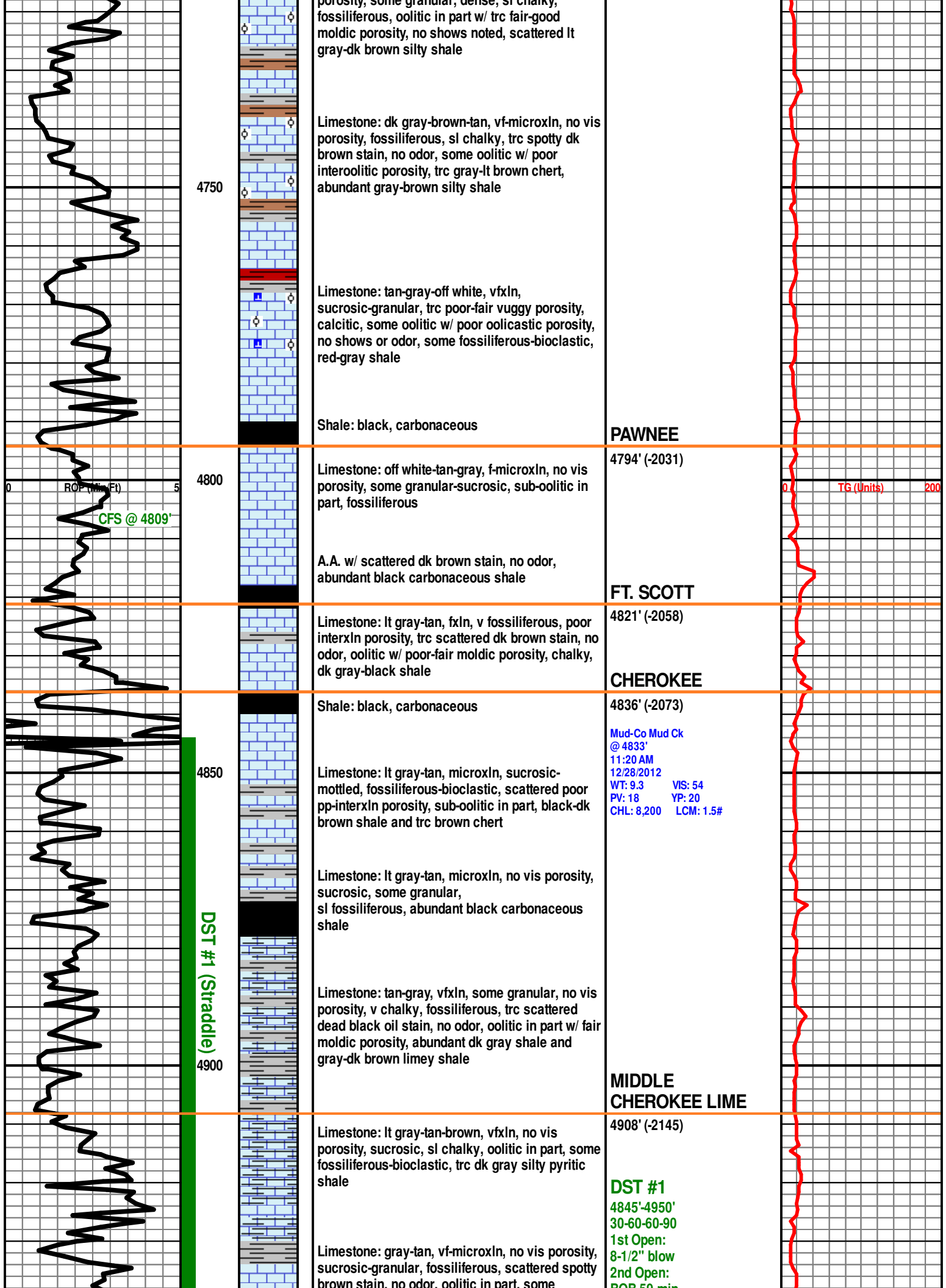
Limestone: tan-gray-off white, f-microxln, chalky, no vis porosity, fossiliferous, intermixed w/ red-green shale, brown silty-sandy shale, and opaque gray-white chert, trc calcite re-xln

6:00 AM
12/27/2012

Mud-Co Mud Ck
@ 4330'
9:10 AM
12/27/2012
WT: 9.25 VIS: 47
PV: 15 YP: 16
CHL: 9,300 LCM: 2#







porosity, some granular, dense, sl chalky, fossiliferous, oolitic in part w/ trc fair-good moldic porosity, no shows noted, scattered lt gray-dk brown silty shale

Limestone: dk gray-brown-tan, vf-microIn, no vis porosity, fossiliferous, sl chalky, trc spotty dk brown stain, no odor, some oolitic w/ poor interoolitic porosity, trc gray-lt brown chert, abundant gray-brown silty shale

Limestone: tan-gray-off white, vfxIn, sucrosic-granular, trc poor-fair vuggy porosity, calcitic, some oolitic w/ poor oolitic porosity, no shows or odor, some fossiliferous-bioclastic, red-gray shale

Shale: black, carbonaceous

PAWNEE

4794' (-2031)

Limestone: off white-tan-gray, f-microIn, no vis porosity, some granular-sucrosic, sub-oolitic in part, fossiliferous

A.A. w/ scattered dk brown stain, no odor, abundant black carbonaceous shale

FT. SCOTT

Limestone: lt gray-tan, fxIn, v fossiliferous, poor interxIn porosity, trc scattered dk brown stain, no odor, oolitic w/ poor-fair moldic porosity, chalky, dk gray-black shale

4821' (-2058)

CHEROKEE

Shale: black, carbonaceous

4836' (-2073)

Mud-Co Mud Ck @ 4833' 11:20 AM 12/28/2012 WT: 9.3 VIS: 54 PV: 18 YP: 20 CHL: 8,200 LCM: 1.5#

Limestone: lt gray-tan, microIn, sucrosic-mottled, fossiliferous-bioclastic, scattered poor pp-interxIn porosity, sub-oolitic in part, black-dk brown shale and trc brown chert

Limestone: lt gray-tan, microIn, no vis porosity, sucrosic, some granular, sl fossiliferous, abundant black carbonaceous shale

Limestone: tan-gray, vfxIn, some granular, no vis porosity, v chalky, fossiliferous, trc scattered dead black oil stain, no odor, oolitic in part w/ fair moldic porosity, abundant dk gray shale and gray-dk brown limey shale

MIDDLE CHEROKEE LIME

4908' (-2145)

Limestone: lt gray-tan-brown, vfxIn, no vis porosity, sucrosic, sl chalky, oolitic in part, some fossiliferous-bioclastic, trc dk gray silty pyritic shale

DST #1

4845'-4950' 30-60-60-90

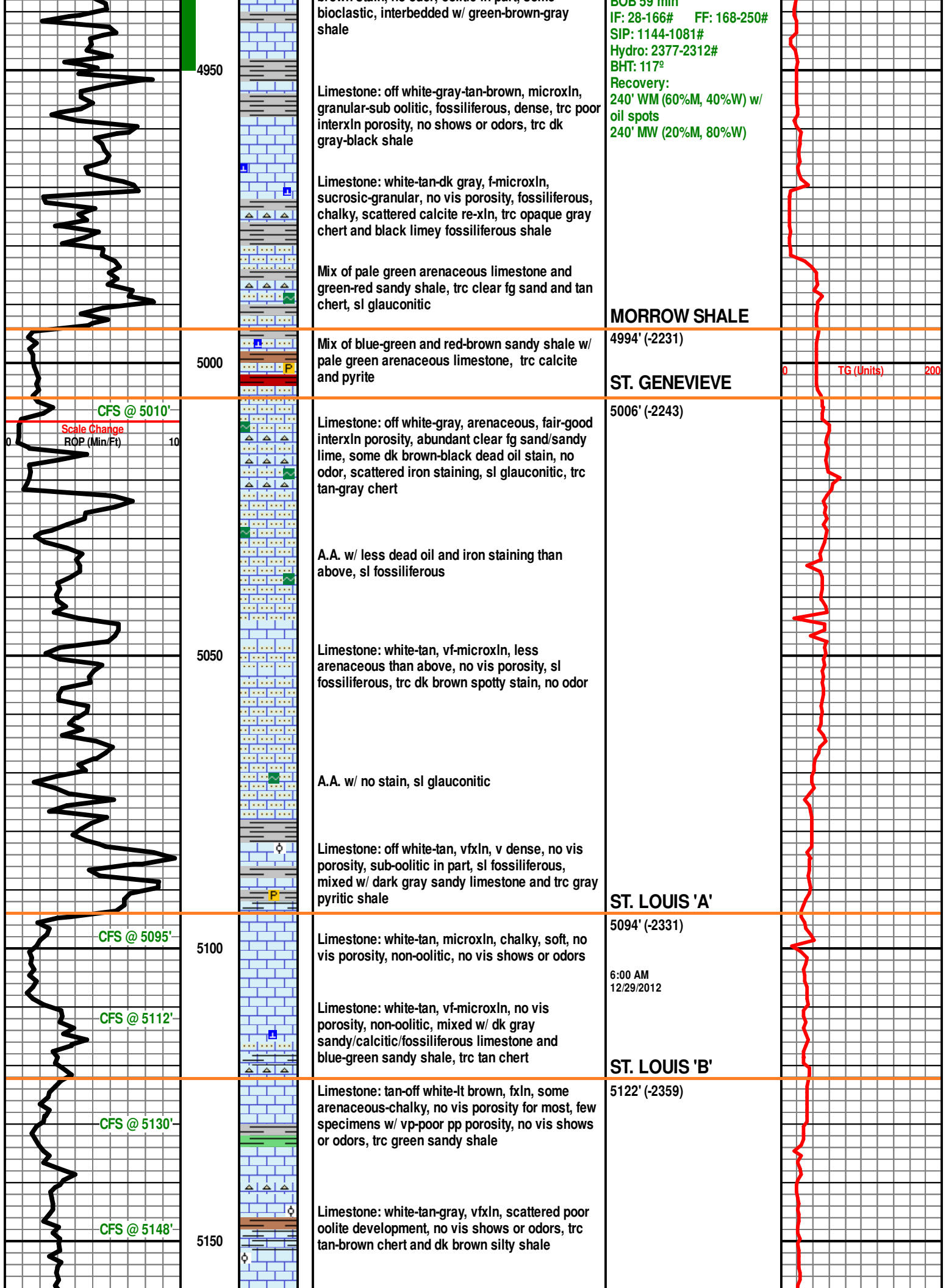
1st Open: 8-1/2" blow

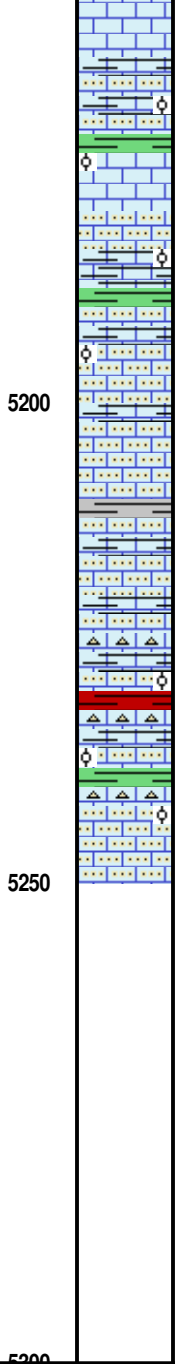
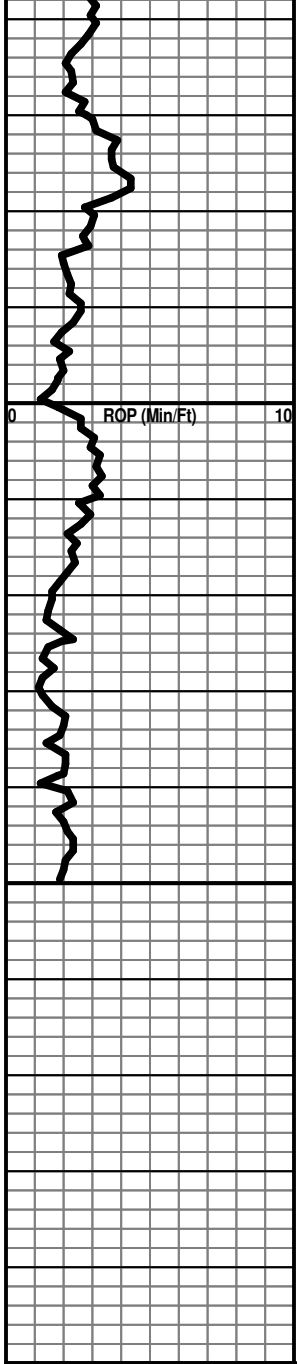
2nd Open: ROP 50 min

DST #1 (Straddle) 4845'-4950'

CFS @ 4809'

TG (Units)





Limestone: gray-white-tan, fxl n-granular, dense, some arenaceous, sub-oolitic w/ poor oolite development, no vis porosity, fossiliferous, green-red shale

A.A. w/ pale green-dk gray silty shale

Limestone: off white-tan- lt brown, microIn, dense, no vis porosity, some arenaceous, cherty, non-oolitic, fossiliferous, trc lt gray silty/pyritic shale

Limestone: gray-tan, vfxIn, no vis porosity, less dense than above, oolitic in part w/ poor inter-oolitic porosity, some arenaceous, chalky, scattered white-tan chert, trc red-green-gray shale

RTD 5250' (-2487)

