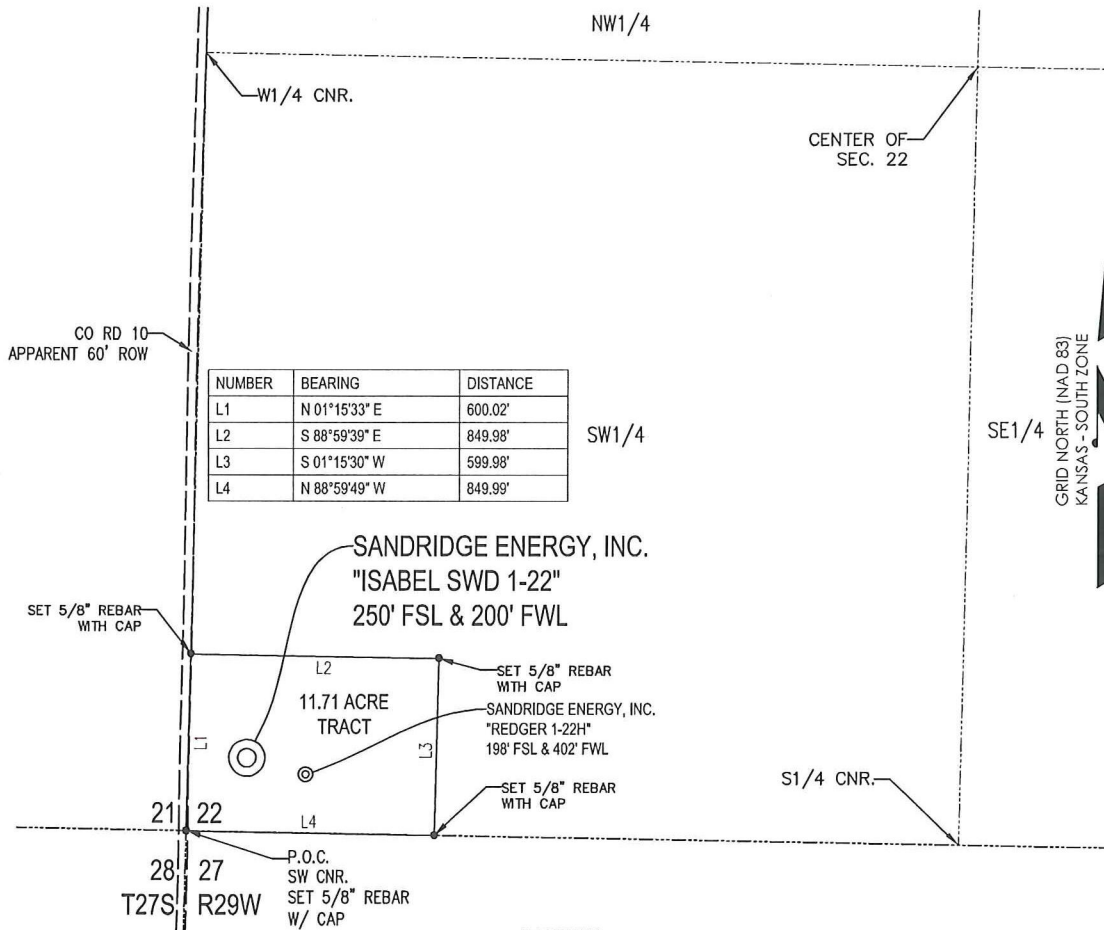




T 27 S - R 29 W



SANDRIDGE ENERGY, INC.  
 "ISABEL SWD 1-22"  
 250' FSL & 200' FWL

SANDRIDGE ENERGY, INC.  
 "REDGER 1-22H"  
 198' FSL & 402' FWL

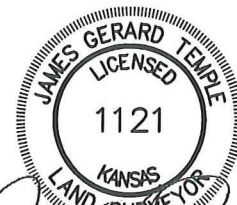
PLAT SHOWING  
 11.71 ACRE TRACT OF LAND IN THE  
 SW1/4 OF SECTION 22, T27S-R29W,  
 GRAY COUNTY, KANSAS

**METES AND BOUNDS DESCRIPTION (11.71 ACRE TRACT)**

PART OF THE SW1/4 OF SECTION 22, TOWNSHIP 27 SOUTH, RANGE 29 WEST, GRAY COUNTY, KANSAS, MORE PARTICULARLY DESCRIBED AS FOLLOWS:

COMMENCING AT A SET 5/8" REBAR WITH CAP MARKED "LS1121" AT THE SOUTHWEST CORNER OF SAID SECTION 22, SAID POINT BEING THE POINT OF BEGINNING;  
 THENCE N01°15'33"E ALONG THE WEST LINE OF SAID SECTION 22, A DISTANCE OF 600.02 FEET TO A SET 5/8" REBAR WITH CAP MARKED "LS1121;"  
 THENCE S88°59'39"E, A DISTANCE OF 849.98 FEET TO A SET 5/8" REBAR WITH CAP MARKED "LS1121;"  
 THENCE S01°15'30"W, A DISTANCE OF 599.98 FEET TO A SET 5/8" REBAR WITH CAP MARKED "LS1121;"  
 THENCE N88°59'49"W ALONG THE SOUTH LINE OF SAID SECTION 22, A DISTANCE OF 849.99 FEET TO THE POINT OF BEGINNING.

SAID TRACT CONTAINING 11.71 ACRES OF LAND AS SURVEYED, MORE OR LESS.

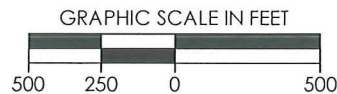


*James Gerard Temple*  
 5/1/2012

**BASIS OF BEARINGS:**  
 KANSAS COORDINATE SYSTEM 1983 SOUTH ZONE  
 BEARINGS: GRID  
 DISTANCES: US SURVEY FOOT AT GRID  
 COORDINATES: US SURVEY FOOT AT GRID

**SURVEYOR'S CERTIFICATE:**  
 I, JAMES GERARD TEMPLE, KANSAS LICENSED PROFESSIONAL LAND SURVEYOR, NO. 1121, DO HEREBY CERTIFY THAT THIS PLAT REPRESENTS THE RESULTS OF A SURVEY MADE ON THE GROUND UNDER MY SUPERVISION ON THE DATE OF 05-01-2012.

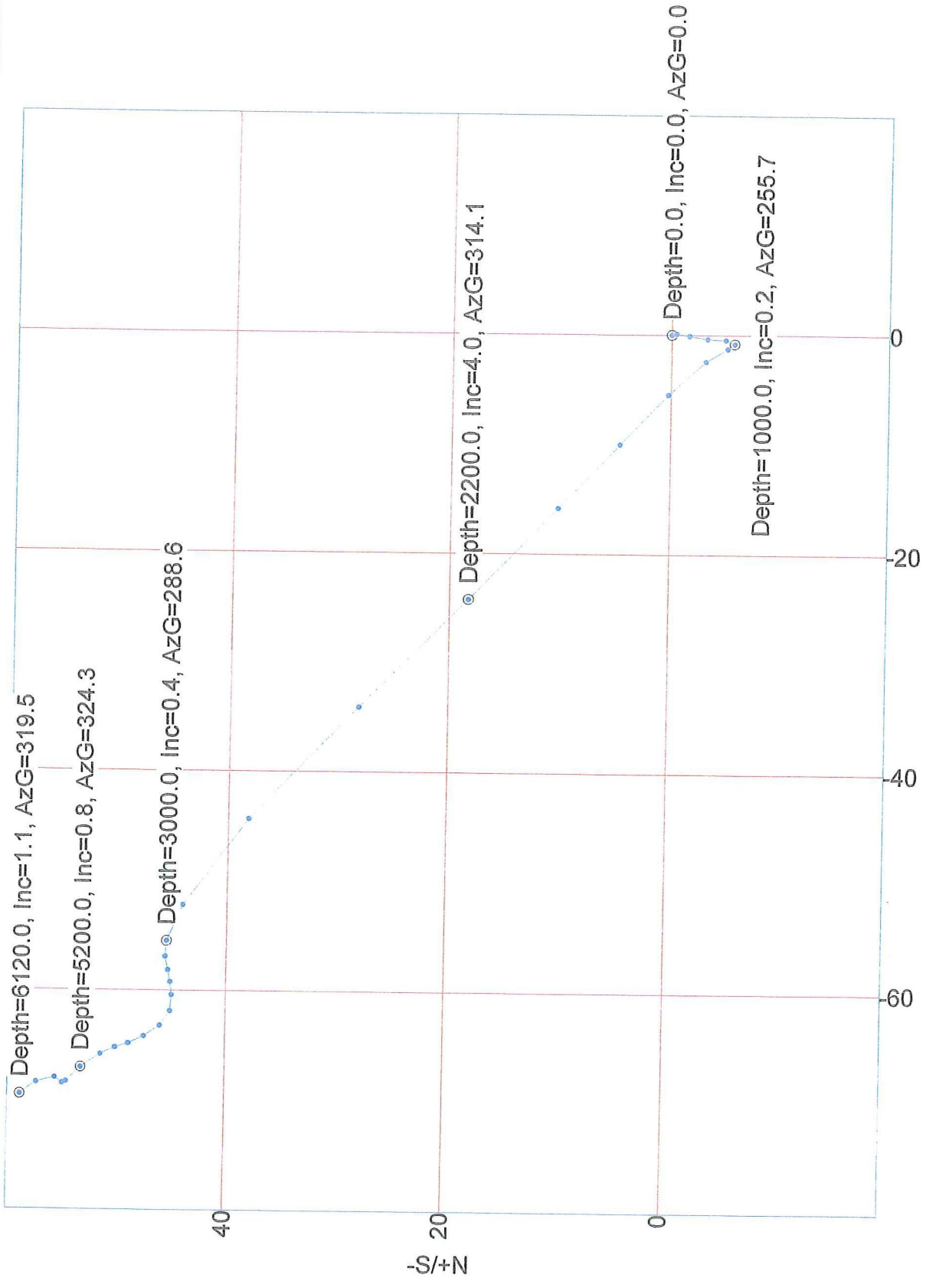
(GLO R)- GENERAL LAND OFFICE RECORD  
 (PERM R)- PERMANENT SURVEY RECORD  
 (M)- MEASURED DATA



REVISION	SandRidge	
	"ISABEL SWD 1-22" PART OF THE SW1/4 OF SECTION 22, T-27-S, R-29-W PROPOSED DRILL SITE GRAY COUNTY, KANSAS	
	SCALE: 1" = 500'	
	PLOT DATE: 05-01-2012	DRAWN BY: S. ANDER
		SHEET NO.: 1 OF 1



Vaughn Energy Services  
Woodward, Oklahoma  
580-254-5000  
Surveyor: Michael Thorne  
Isabel SWD 2729 1-22 / API 15-069-20401



VES Survey Date: 11/10/2012

Company: SandRidge Explor. & Prod. Co.

Lease/Well: Isabel SWD 2729 / 1-22

Rig Name: Tomcat 3

State/County: Kansas/ Gray

Latitude: 37.68, Longitude: -100.49

GRID North is 1.22 Degrees West of True North

VS-Azi: 0.00 Degrees

Depth Reference : RKB = 10.5'

DRILLOG HA GYRO SURVEY CALCULATIONS

Filename: e line gyro\_ed.ut

Minimum Curvature Method

Report Date/Time: 11/14/2012 / 15:40

Vaughn Energy Services

Woodward, Oklahoma

580-254-5000

Surveyor: Michael Thorne

Isabel SWD 2729 1-22 / API 15-069-20401



Measured Depth FT	Incl Angle Deg	Drift Direction Deg	TVD FT	+N-S FT	+E/W FT	Vertical Section FT	Closure Distance FT	Closure Direction Deg	Dogleg Severity Deg/100
0.00	0.00	0.00	0.00	0.00	0.00	0.00	0.00	0.00	****
200.00	0.26	167.34	200.00	-0.44	0.10	-0.44	0.45	167.34	0.13
400.00	0.46	201.39	400.00	-1.62	-0.09	-1.62	1.62	183.29	0.14
600.00	0.52	179.04	599.99	-3.27	-0.37	-3.27	3.29	186.44	0.10
800.00	0.44	187.05	799.98	-4.93	-0.45	-4.93	4.95	185.19	0.05
1000.00	0.16	255.65	999.98	-5.76	-0.81	-5.76	5.81	188.05	0.20
1200.00	0.41	345.87	1199.98	-5.12	-1.26	-5.12	5.28	193.84	0.22
1400.00	0.94	322.91	1399.96	-3.11	-2.43	-3.11	3.95	217.94	0.29
1600.00	1.66	314.84	1599.91	0.24	-5.47	0.24	5.48	272.50	0.37
1800.00	1.95	313.51	1799.81	4.63	-10.00	4.63	11.02	294.84	0.15
2000.00	2.69	313.70	1999.64	10.22	-15.86	10.22	18.87	302.78	0.37
2200.00	3.95	314.10	2199.30	18.26	-24.21	18.26	30.33	307.02	0.63
2400.00	4.11	316.56	2398.81	28.26	-34.09	28.26	44.28	309.66	0.12
2600.00	4.08	311.42	2598.30	38.16	-44.34	38.16	58.50	310.72	0.18
2800.00	1.62	294.84	2798.04	44.05	-52.24	44.05	68.33	310.14	1.28
3000.00	0.43	288.61	2998.01	45.48	-55.50	45.48	71.75	309.33	0.60
3200.00	0.42	259.82	3198.00	45.58	-56.92	45.58	72.92	308.69	0.10
3400.00	0.31	255.21	3398.00	45.32	-58.16	45.32	73.73	307.93	0.06
3600.00	0.32	263.72	3597.99	45.12	-59.23	45.12	74.46	307.30	0.02

measured	UIC1	UIC2	UIC3	UIC4	UIC5	UIC6	UIC7	UIC8	UIC9	UIC10	UIC11	UIC12	UIC13	UIC14	UIC15	UIC16	UIC17	UIC18	UIC19	UIC20	UIC21	UIC22	UIC23	UIC24	UIC25	UIC26	UIC27	UIC28	UIC29	UIC30	UIC31	UIC32	UIC33	UIC34	UIC35	UIC36	UIC37	UIC38	UIC39	UIC40	UIC41	UIC42	UIC43	UIC44	UIC45	UIC46	UIC47	UIC48	UIC49	UIC50	UIC51	UIC52	UIC53	UIC54	UIC55	UIC56	UIC57	UIC58	UIC59	UIC60	UIC61	UIC62	UIC63	UIC64	UIC65	UIC66	UIC67	UIC68	UIC69	UIC70	UIC71	UIC72	UIC73	UIC74	UIC75	UIC76	UIC77	UIC78	UIC79	UIC80	UIC81	UIC82	UIC83	UIC84	UIC85	UIC86	UIC87	UIC88	UIC89	UIC90	UIC91	UIC92	UIC93	UIC94	UIC95	UIC96	UIC97	UIC98	UIC99	UIC100
Depth	Angle	Direction	TVD	+N-S	+E-W	Vertical	Closure	Dogleg																																																																																												
FT	Deg	Deg	FT	FT	FT	Section	Distance	Severity																																																																																												
						FT	FT	Deg/100																																																																																												
3800.00	0.37	260.62	3797.99	44.95	-60.43	44.95	75.31	0.03																																																																																												
4000.00	0.50	285.63	3997.98	45.08	-61.90	45.08	76.58	0.11																																																																																												
4200.00	0.48	324.97	4197.98	46.00	-63.21	46.00	78.18	0.16																																																																																												
4400.00	0.52	325.87	4397.97	47.43	-64.20	47.43	79.82	0.02																																																																																												
4600.00	0.38	347.09	4597.96	48.83	-64.86	48.83	81.18	0.11																																																																																												
4800.00	0.35	338.87	4797.96	50.04	-65.23	50.04	82.21	0.03																																																																																												
5000.00	0.48	330.71	4997.96	51.34	-65.85	51.34	83.50	0.07																																																																																												
5200.00	0.79	324.33	5197.94	53.18	-67.06	53.18	85.59	0.16																																																																																												
5400.00	0.31	294.87	5397.93	54.53	-68.36	54.53	87.45	0.27																																																																																												
5600.00	0.20	72.69	5597.93	54.87	-68.52	54.87	87.78	0.24																																																																																												
5800.00	0.37	15.38	5797.93	55.60	-68.01	55.60	87.84	0.16																																																																																												
6000.00	0.71	330.84	5997.92	57.31	-68.44	57.31	89.27	0.26																																																																																												
6120.00	1.08	319.51	6117.91	58.82	-69.54	58.82	91.08	0.34																																																																																												

# HALLIBURTON

# Cementing Job Summary

The Road to Excellence Starts with Safety

Sold To #: 305021	Ship To #: 2958539	Quote #:	Sales Order #: 9902008
Customer: SANDRIDGE ENERGY INC EBUSINESS		Customer Rep: Solis, Lu	
Well Name: Isabel 2729 SWD	Well #: 1-22	API/UWI #: 15-069-20401	
Field:	City (SAP): MONTEZUMA	County/Parish: Gray	State: Kansas
Legal Description: Section 22 Township 27S Range 29W			
Contractor: TOMCAT		Rig/Platform Name/Num: 3	
Job Purpose: Cement Surface Casing			
Well Type: Development Well		Job Type: Cement Surface Casing	
Sales Person: NGUYEN, VINH		Srvc Supervisor: DURAN, EDUR	MBU ID Emp #: 445769

### Job Personnel

HES Emp Name	Exp Hrs	Emp #	HES Emp Name	Exp Hrs	Emp #	HES Emp Name	Exp Hrs	Emp #
DUCSAK, JAMES Joseph	8	518883	DURAN, EDUR	8	445769	JOHNSON, MATTHEW Warren	8	525955
RAMIREZ, JORGE M.	8	498481						

### Equipment

HES Unit #	Distance-1 way	HES Unit #	Distance-1 way	HES Unit #	Distance-1 way	HES Unit #	Distance-1 way
10025025	70 mile	10243558	70 mile	10244148	70 mile	10286731	70 mile
10872308	70 mile	11256865	70 mile	11288858	70 mile		

### Job Hours

Date	On Location Hours	Operating Hours	Date	On Location Hours	Operating Hours	Date	On Location Hours	Operating Hours
10/20/2012	2	2	10/21/2012	6	6			
TOTAL			Total is the sum of each column separately					

### Job

### Job Times

Formation Name	Date	Time	Time Zone
Formation Depth (MD) Top	Bottom	Called Out	20 - Oct - 2012 14:00 CST
Form Type	BHST	On Location	20 - Oct - 2012 22:00 CST
Job depth MD	1525. ft	Job Depth TVD	1525. ft
Water Depth	Wk Ht Above Floor	Job Started	21 - Oct - 2012 02:54 CST
Perforation Depth (MD) From	To	Job Completed	21 - Oct - 2012 04:20 CST
		Departed Loc	21 - Oct - 2012 06:35 CST

### Well Data

Description	New / Used	Max pressure psig	Size in	ID in	Weight lbm/ft	Thread	Grade	Top MD ft	Bottom MD ft	Top TVD ft	Bottom TVD ft
12.25" Open Hole				12.25					1225.		
12.25" Open Hole- Lower				12.25				1225.	1500.		
9.625" Surface Casing	Unknown		9.625	8.921	36.	LTC	J-55		1500.		

### Sales/Rental/3<sup>rd</sup> Party (HES)

Description	Qty	Qty uom	Depth	Supplier
PLUG,CMTG, TOP, 9 5/8, HWE, 8.16 MIN/9.06 MA	1	EA		
SUGAR - GRANULATED	100	LB		

### Tools and Accessories

Type	Size	Qty	Make	Depth	Type	Size	Qty	Make	Depth	Type	Size	Qty	Make
Guide Shoe					Packer					Top Plug			
Float Shoe					Bridge Plug					Bottom Plug			
Float Collar					Retainer					SSR plug set			
Insert Float										Plug Container			
Stage Tool										Centralizers			

### Miscellaneous Materials

Gelling Agt	Conc	Surfactant	Conc	Acid Type	Qty	Conc	%
Treatment Fld	Conc	Inhibitor	Conc	Sand Type	Size	Qty	



The Road to Excellence Starts with Safety

Sold To #: 305021	Ship To #: 2958539	Quote #:	Sales Order #: 9922035
Customer: SANDRIDGE ENERGY INC EBUSINESS		Customer Rep: Solis, Lu	
Well Name: Isabel 2729 SWD	Well #: 1-22	API/UWI #: 15-069-20401	
Field:	City (SAP): MONTEZUMA	County/Parish: Gray	State: Kansas
Legal Description: Section 22 Township 27S Range 29W			
Contractor: TOMCAT		Rig/Platform Name/Num: 3	
Job Purpose: Cement Intermediate Casing			
Well Type: Development Well		Job Type: Cement Intermediate Casing	
Sales Person: NGUYEN, VINH		Srvc Supervisor: RALSTON, ANTHONY MBU ID Emp #: 448065	

### Job Personnel

HES Emp Name	Exp Hrs	Emp #	HES Emp Name	Exp Hrs	Emp #	HES Emp Name	Exp Hrs	Emp #
BECERRA, JUAN Carlos	10	491933	CHURCH, ERICK D	10	532590	JOURNAGAN, MICHAEL D	10	524224
NASH, JONATHAN Clark	10	524600	RALSTON, ANTHONY Kenneth	10	448065			

### Equipment

HES Unit #	Distance-1 way	HES Unit #	Distance-1 way	HES Unit #	Distance-1 way	HES Unit #	Distance-1 way

### Job Hours

Date	On Location Hours	Operating Hours	Date	On Location Hours	Operating Hours	Date	On Location Hours	Operating Hours
11/9/12	10	6						
TOTAL			Total is the sum of each column separately					

### Job

### Job Times

Formation Name	Formation Depth (MD)	Top	Bottom	Called Out	Date	Time	Time Zone
Form Type	Job depth MD	6337. ft	Job Depth TVD	6337. ft	Job Started		
Water Depth	Wk Ht Above Floor	48. ft	Job Completed				
Perforation Depth (MD)	From	To	Departed Loc				

### Well Data

Description	New / Used	Max pressure psig	Size in	ID in	Weight lbm/ft	Thread	Grade	Top MD ft	Bottom MD ft	Top TVD ft	Bottom TVD ft
8.75" Open Hole				8.75				1500.	6290.		
7" Intermediate Casing Lower	Unknown		7.	6.314	24.8			6250.	6290.		
7" Intermediate Casing Upper	Unknown		7.	6.276	26.	BTC	J-55	.	6250.		
9.625" Surface Casing	Unknown		9.625	8.921	36.	LTC	J-55	.	1500.		

### Sales/Rental/3<sup>rd</sup> Party (HES)

Description	Qty	Qty uom	Depth	Supplier
PLUG,CMTG, TOP, 7, HWE, 5.66 MIN/6.54 MAX CS	1	EA		

### Tools and Accessories

Type	Size	Qty	Make	Depth	Type	Size	Qty	Make	Depth	Type	Size	Qty	Make
Guide Shoe					Packer					Top Plug	7"	1	WF
Float Shoe					Bridge Plug					Bottom Plug			
Float Collar					Retainer					SSR plug set			
Insert Float										Plug Container	7"	1	WF
Stage Tool										Centralizers			

### Miscellaneous Materials

Gelling Agt	Conc	Surfactant	Conc	Acid Type	Qty	Conc	%
Treatment Fld	Conc	Inhibitor	Conc	Sand Type	Size	Qty	

Fluid Data									
Stage/Plug #: 1									
Fluid #	Stage Type	Fluid Name	Qty	Qty uom	Mixing Density lbm/gal	Yield ft <sup>3</sup> /sk	Mix Fluid Gal/sk	Rate bbl/min	Total Mix Fluid Gal/sk
1	Fresh Water		10	bbl	8.33	.0	.0	4	
2	Lead Cement	ECONOCEM (TM) SYSTEM (452992)	240	sacks	13.6	1.53	7.32	4	7.32
	0.4 %	HALAD(R)-9, 50 LB (100001617)							
	2 lbm	KOL-SEAL, BULK (100064233)							
	2 %	BENTONITE, BULK (100003682)							
	7.321 Gal	FRESH WATER							
3	Tail Cement	HALCEM (TM) SYSTEM (452986)	100	sacks	15.6	1.19	5.08	3.5	5.08
	0.4 %	HALAD(R)-9, 50 LB (100001617)							
	2 lbm	KOL-SEAL, BULK (100064233)							
	5.076 Gal	FRESH WATER							
4	Displacement/TB C		242	bbl	8.33	.0	.0	6	
Calculated Values		Pressures			Volumes				
Displacement	242	Shut In: Instant		Lost Returns		Cement Slurry	86.5	Pad	
Top Of Cement	3144	5 Min		Cement Returns		Actual Displacement	242	Treatment	
Frac Gradient		15 Min		Spacers	10	Load and Breakdown		Total Job	338.5
Rates									
Circulating	5	Mixing	4	Displacement	6	Avg. Job	5		
Cement Left In Pipe	Amount	45 ft	Reason	Shoe Joint					
Frac Ring # 1 @	ID	Frac ring # 2 @	ID	Frac Ring # 3 @	ID	Frac Ring # 4 @	ID		
The Information Stated Herein Is Correct				Customer Representative Signature					



The Road to Excellence Starts with Safety

Sold To #: 305021	Ship To #: 2958539	Quote #:	Sales Order #: 9922035
Customer: SANDRIDGE ENERGY INC EBUSINESS		Customer Rep: Solis, Lu	
Well Name: Isabel 2729 SWD	Well #: 1-22	API/UWI #: 15-069-20401	
Field:	City (SAP): MONTEZUMA	County/Parish: Gray	State: Kansas
Legal Description: Section 22 Township 27S Range 29W			
Lat: N 0 deg. OR N 0 deg. 0 min. 0 secs.		Long: E 0 deg. OR E 0 deg. 0 min. 0 secs.	
Contractor: TOMCAT		Rig/Platform Name/Num: 3	
Job Purpose: Cement Intermediate Casing			Ticket Amount:
Well Type: Development Well		Job Type: Cement Intermediate Casing	
Sales Person: NGUYEN, VINH		Srvc Supervisor: RALSTON, ANTHONY	MBU ID Emp #: 448065

Activity Description	Date/Time	Cht #	Rate bbl/min	Volume bbl		Pressure psig		Comments
				Stage	Total	Tubing	Casing	
Call Out	11/08/2012 20:00							
Pre-Convoy Safety Meeting	11/08/2012 22:30							DISCUSS ROUTES, FOLLOWING DISTANCE, AND COMPLETED JOURNEY MANAGMENT
Depart from Service Center or Other Site	11/08/2012 23:00							
Arrive At Loc	11/09/2012 03:00							ARRIVE ON LOCATION, CASING STILL RUNNING, APRX 40 JOINTS LEFT
Assessment Of Location Safety Meeting	11/09/2012 03:40							ASSESS AND SPOT EQUIPMENT
Pre-Rig Up Safety Meeting	11/09/2012 06:00							DISCUSS PINCH POINTS, RED ZONE, TRIPPING HAZARDS, AND PPE
Rig-Up Completed	11/09/2012 07:35							
Pre-Job Safety Meeting	11/09/2012 07:40							DISCUSS RATES/PRESSURES/EMERGENCY PLAN/LEAKS AND HSE STANDARDS
Test Lines	11/09/2012 08:00							TEST LINES 6000 PSI NO LEAKS
Drop Plug	11/09/2012 08:11							DROP FIRST PLUG FOR DV, THIRD PARTY *WEATHERFORD*
Activity Description	Date/Time	Cht #	Rate bbl/min	Volume bbl		Pressure psig		Comments
				Stage	Total	Tubing	Casing	

# HALLIBURTON

## Cementing Job Log

Pump Displacement	11/09/2012 08:18		5	242			150.0	PUMP 242 BBLS FRESH WATER DISPLACEMENT TO PUMP PLUG
Bump Plug	11/09/2012 09:10		2				550.0	BUMP PLUG @ 50PSI TOOK 500 OVER TO 550 PSI
Set Packer	11/09/2012 09:31		2	2			2100.0	SET PACKER, PUMP @ 2 BPM AS PER TOOL GUY, "WEATHERFORD" NEVER SAW CHART DIFERANCE, MADE EXTRA ATTEMPTS AT SETTING THE PACKER TAKING PRESSURE UP TO 2100 PSI, TOOL GUY SATISFIED WITH PACKER.
Open Multiple Stage Cementer	11/09/2012 10:00							OPEN MSC, TOOL OPEND AT 2495 PSI, BEGAN PUMPING WATER TO ESTALISH RATE
Pump Spacer	11/09/2012 10:03		4	15			189.0	ESTABLISH A RATE AND PUMP 10BBLS FRESH WATER SPACER
Pump Lead Cement	11/09/2012 10:08		4	65.39			150.0	PUMP 65.39BBLS LEAD CMT, 13.6 PPG, 4 BPM
Pump Tail Cement	11/09/2012 10:23		3.5	21.19			140.0	PUMP 21 BBLS TAIL CMT, 15.6 PPG, 3.5 BPM
Shutdown	11/09/2012 10:31							SHUT DOWN, WASH TRUCK
Drop Plug	11/09/2012 10:33							DROPPED TOP PLUG
Pump Displacement	11/09/2012 10:36		6	242			120.0	PUMP 241 BBLS FRESH WATER DISPLACEMENT, SAVING LAST 1.5 BBLS IN TUB FOR PUTTING ON TOP OF PLUG TO LEAVE A GOOD SHOE ASPER CO-REP RETURNS GAINED AT 109 BBLS GONE, LOST AT 139 BBLS
Activity Description	Date/Time	Cht #	Rate bbl/min	Volume bbl		Pressure psig		Comments
				Stage	Total	Tubing	Casing	

Sold To # : 305021

Ship To # : 2958539

Quote # :

Sales Order # : 9922035

SUMMIT Version: 7.3.0045

Friday, November 09, 2012 12:35:00

# HALLIBURTON

## *Cementing Job Log*

Bump Plug	11/09/2012 11:25		2					BUMP PLUG 950 PSI, 2 BPM, TOOK 1500 OVER TO 2500PSI TO CYCLE MSC TOOL SHUT ..... ..... .....
Check Floats	11/09/2012 11:28							FLOATS HELD; 2 BBLS BACK
Pre-Rig Down Safety Meeting	11/09/2012 11:45							DISCUSS PINCH POINTS ,TRIPPING HAZARDS, PPE, WATER BREAKS AND FORKLIFT SAFETY
Rig-Down Completed	11/09/2012 13:30							
Pre-Convoy Safety Meeting	11/09/2012 13:40							DISCUSS ROUTES, HOURS OF SERVICE, WILDLIFE, FOLLOWING DISTANCE, USED JOURNEY MANAGEMENT
Depart Location for Service Center or Other Site	11/09/2012 13:45							THANK YOU FOR CHOOSING HALLIBURTON ENERGY SERVICES!!



Division : 0701  
 Delivery Ticket : 2914  
 Delivery Date : 10/16/2012

P.O. BOX 3660  
 HOUMA, LA 70361-3660

Customer : SAN400

Ordered By :  
 Lease/Well : ISABEL 2729 #1-22H  
 Rig Name/Number : TOMCAT 3  
 AFE Number :  
 Site Contact :

BILL TO : SANDRIDGE ENERGY  
 123 ROBERT S KERR AVENUE  
 OKLAHOMA CITY, OK 73102-6406  
 PHONE: (405) 763-5500 FAX: ()

Qty	Description	Min / Standby / Usage Charge	Add Day	Unit Price	Start Date / Stop Date	Extended Line Total
1	ISABEL 2729 #1-22H	\$29,450.00	\$0.00	\$29,450.00	10/11/2012 10/11/2012	\$29,450.00
150	DRILLED 30" CONDUCTOR HOLE	\$0.00	\$0.00	\$0.00	10/11/2012 10/11/2012	
150	20" CONDUCTOR PIPE (.250 WALL)	\$0.00	\$0.00	\$0.00	10/11/2012 10/11/2012	
1	6'X6' CELLAR TINHORN WITH PROTECTIVE RING	\$0.00	\$0.00	\$0.00	10/11/2012 10/11/2012	
1	DRILL & INSTALL 6'X6' CELLAR TINHORN	\$0.00	\$0.00	\$0.00	10/11/2012 10/11/2012	
20	DRILLED 20" MOUSE HOLE (PER FOOT)	\$0.00	\$0.00	\$0.00	10/11/2012 10/11/2012	
20	MOUSE HOLE SHUCK	\$0.00	\$0.00	\$0.00	10/11/2012 10/11/2012	
40	DRILLED 40" RATHOLE	\$0.00	\$0.00	\$0.00	10/11/2012 10/11/2012	
40	RAT HOLE SHUCK	\$0.00	\$0.00	\$0.00	10/11/2012 10/11/2012	
1	MOBILIZATION OF EQUIPMENT & ROAD PERMITTING FEE	\$0.00	\$0.00	\$0.00	10/11/2012 10/11/2012	
1	WELDING SERVICES FOR PIPE & LIDS	\$0.00	\$0.00	\$0.00	10/11/2012 10/11/2012	
1	PROVIDED EQUIPMENT & LABOR FOR DIRT REMOVAL	\$0.00	\$0.00	\$0.00	10/11/2012 10/11/2012	
1	PROVIDED METAL LIDS (1 FOR CONDUCTOR & 2 FOR THE MOUSEHOLE PIPE)	\$0.00	\$0.00	\$0.00	10/11/2012 10/11/2012	
16	CEMENT	\$0.00	\$0.00	\$0.00	10/11/2012 10/11/2012	
1	PROVIDED EQUIPMENT & LABOR TO ASSIST IN PUMPING CONCRETE	\$0.00	\$0.00	\$0.00	10/11/2012 10/11/2012	

Sub Total: DC 12125 \$29,450.00 \$0.00 \$29,450.00

AFE Number: DC 12125

Well Name: Isabel 1-22 SWD

Code: 830-010

Amount: \$29,450.00

Co. Man: Lawrence Rogers

Man Sig: [Signature]

John Fortan  
 Print Name  
[Signature]  
 Signature



SECTOR BOND TOOL

COMPANY SANDRIDGE ENERGY  
 WELL ISABEL SWD 1-22  
 FIELD UNNAMED  
 CNTY GRAY STATE KS  
 COMPANY SANDRIDGE ENERGY  
 WELL ISABEL SWD 1-22  
 FIELD UNNAMED  
 COUNTY GRAY  
 LOCATION:  
 250' FSL & 200' FWL  
 SEC.22 TWP.27S RGE29W  
 STATE KANSAS  
 OTHER SERVICES:

PERM. DATUM G.L.  
 LOG MEASURED FROM K.B. 12' FT. ABOVE PERMANENT DATUM  
 DRILLING MEASURED FROM K.B.  
 DATE 23-NOV-2012  
 ELEV. 2737  
 ELEV.:K.B. 2749  
 D.F. 2748  
 G.L. 2737

DATE	23-NOV-2012								
RUN NO.	ONE								
DEPTH DRILLER	6305								
DEPTH LOGGER	6300								
BTM. LOG INTERVAL	6280								
TOP LOG INTERVAL	3500								
OPEN HOLE SIZE	8.75								
TYPE FLUID	WATER								
DENS.	8.3			0.00					
MAX. REC. TEMP.	F 32								
EST. CEMENT TOP	3900								
TIME WELL READY	ON ARRIVAL								
TIME LOGGER ON BTM.	SEE LOG								
EQUIP. NO.	14123								
LOCATION	WOODWARD								
RECORDED BY	N. BOONE								
WITNESSED BY	ROBERT MATHEWS								
BOREHOLE RECORD					TUBING RECORD				
RUN NO.	BIT	FROM	TO	SIZE	WGT.	FROM	TO		
CASING RECORD	SIZE	WT/FT	GRADE	TYPE	JOINT	TOP	BOTTOM		
SURFACE STRING	9 5/8	36	J55			SURF	1521		
PROD. STRING	7	26				SURF	6305		
LINER									

All interpretations of log data are opinions based on inferences from electrical or other measurements. We do not guarantee the accuracy or correctness of any interpretation or recommendation and we shall not be liable or responsible for any loss, cost, damages or expenses incurred or sustained by anyone resulting from any interpretation or recommendation made by any of our employees or agents.

REMARKS Rig: CRANE 15060 Service Order # 195544  
 LOG CORRELATED TO DV TOOL AT 6279' BHT 32 °F  
 ESTIMATED TOP OF CEMENT AT 3900'

Prints: 2

THANK YOU FOR USING WEATHERFORD WIRELINE (580-256-3888)

		EQUIPMENT DATA			
Bit Size	7.875	Run No.	Tool Type	Tool No.	Other
Well Status		1	GRBA	273	
Surface Pressure			SBTA	235	
Shut In	Flowing				