

20
30
40
50
60
70
80
90
2400
10
20
30
40
50
3500
10
20
30

TOP

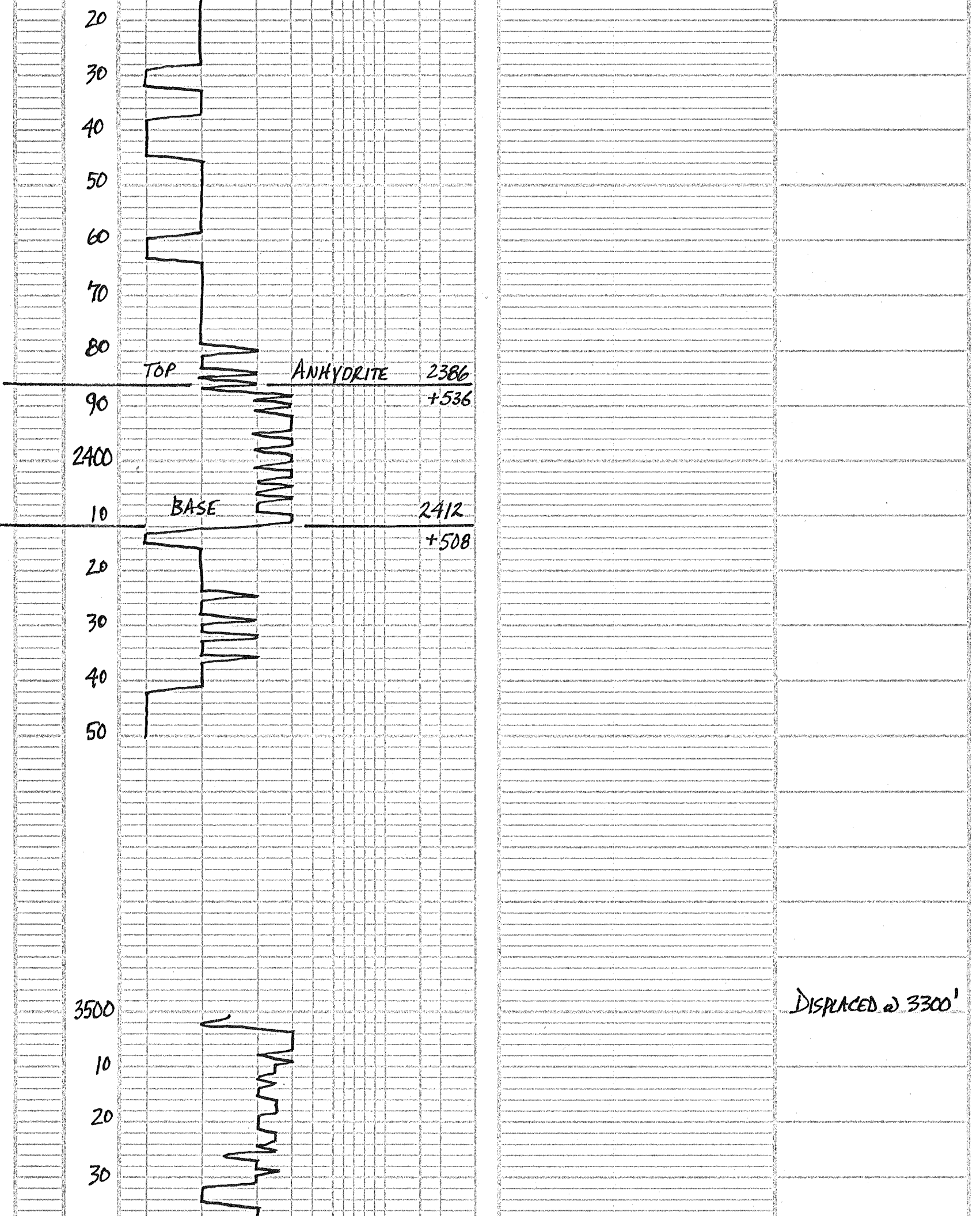
ANHYDRITE

2386
+536

BASE

2412
+508

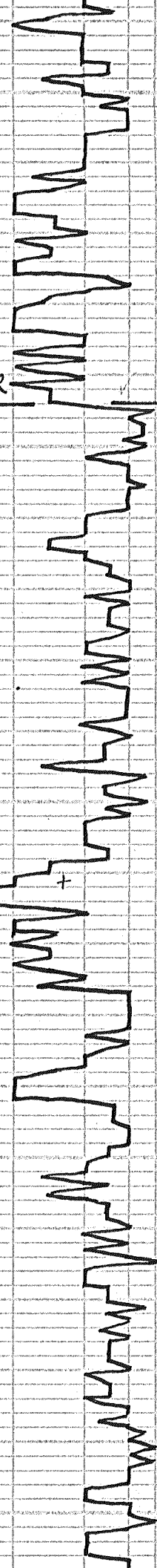
DISPLACED @ 3300'



40
50
60
70
80
90
3600
10
20
30
40
50
60
70
80
90
3700
10
20
30
40
50

STOTLER

3594
-674



LOTS GRAY SHS & TAN BUFF DOC LS
P-F ϕ - NS NO ODOR

20 LOTS TAN BUFF DOC LS P-F ϕ
NS NO ODOR Vi FOSS

LT CRM SEMI-FOSS LS P-F ϕ
NS NO ODOR

40 CRM - Dull WH SLI-FOSS LS-NS

LOTS DK GRAY SHS

60 GRAY-FN-XLN LS POOR ϕ - NS

FLOOD LT GRAY SLI-FOSS LS P-F ϕ
NS NO ODOR

80 LT LT GRAY SEMI-FOSS LS P-F ϕ
NS NO ODOR

FLOOD LT CRM-LT TAN FN-XLN
Dolo LS - NS

00 LOTS LT TAN Dolo LS SEMI-FOSS
P-F ϕ - NS NO ODOR

GRAY-BUFF SLI-FOSS LS P-F ϕ
NS NO ODOR INC GRAY SHS

20 LT BRN FN GR MICA SST - NS
POOR ϕ

LOTS PEARL GRAY FN-XLN LS
POOR ϕ - NS NO ODOR

40 LT CRM SLI-FOSS LS PTLY CVY
POOR ϕ - NS

WH-LT CRM SLI-FOSS LS POOR ϕ
NS NO ODOR

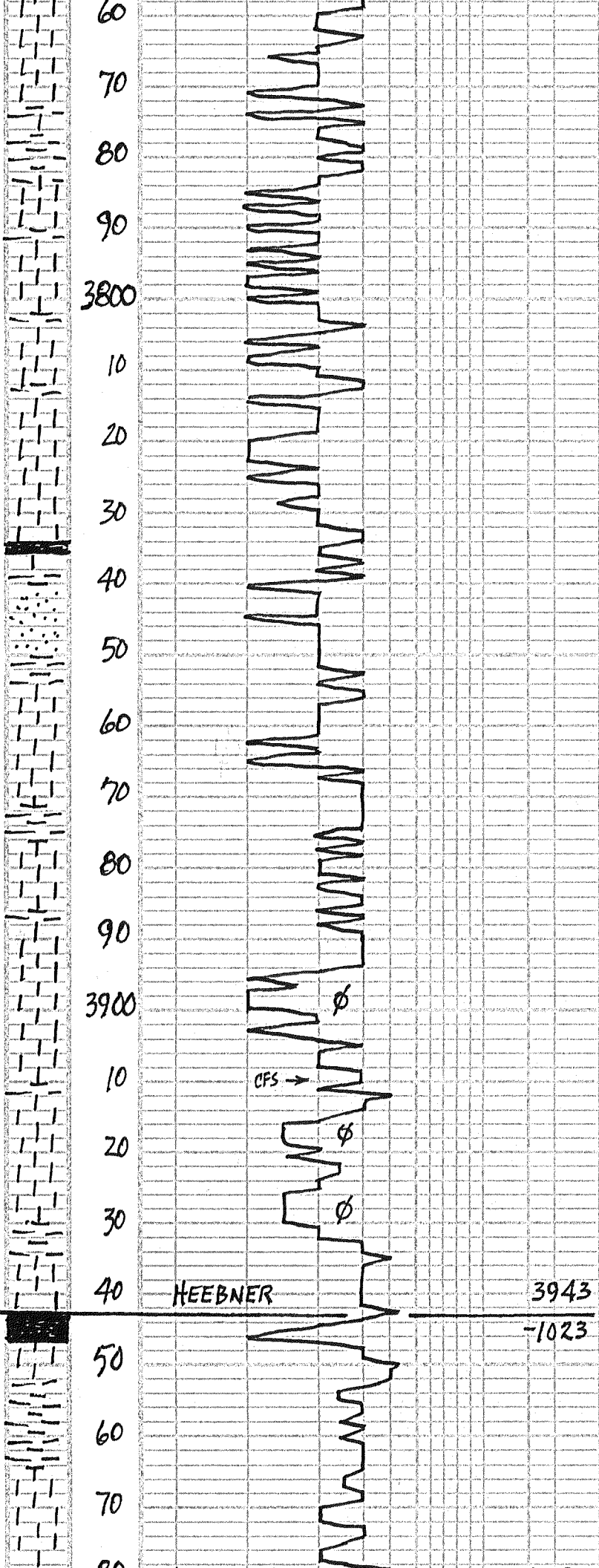
60 LT CRM SEMI-FOSS LS POOR ϕ
NS NO ODOR

WH-LT CRM SLI-FOSS LS POOR ϕ

SPLS FEW
RED BEDS

MUD COV
VISC: 48 FILT: 6.0
WT: 9.1 CHL: 2,000

GEOL DN LOC.
2:00 PM SAT. 10-27-12



NS NO ODOR

80 WH-LT CRM SEMI-FOSS LS
POOR ϕ - NS

GRY - MEALY - FN-XLN SILTY LS
POOR ϕ - NS

00 V. LT GRAY MEALY SILTY LS-NS

FLOOD WH-LT CRM CKY LS SEMI-FOSS P-F ϕ - NS NO ODOR

20 WH-LT CRM SEMI-FOSS LS
PTLY CKY - NS NO ODOR

GRY DNSE L¹/₂ LS $\frac{1}{2}$ LS AA-NS
NO GRAY SHS NO ODOR

40 FLOOD LT CRM FN-XLN DOL LS
SLI-CKY SLI-FOSS P-F ϕ - NS

975# PSI

WH-LT CRM - LT GRAY SLI FOSS LS
POOR ϕ - NS FEW BLK SHS

60 LT BUFF-TAN SLI FOSS LS DNSE
MEALY POOR ϕ - NS NO ODOR
 $\frac{1}{2}$ LT GRAY DIRTY SILTSTONE

← VISC: 46
WT: 9.2

GRY-BUFF-TAN SLI-FOSS LS
POOR ϕ - NS NO ODOR

80 WH-LT CRM FOSS LS FAIR ϕ - NS
NO ODOR

LT TAN LT BUFF SLI-FOSS LS
P-F ϕ - NS NO ODOR

00 LT TAN SEMI-FOSS LS P-F ϕ NS
NO ODOR

10 LT CRM LT TAN SEMI-FOSS LS
POOR ϕ - NS NO ODOR

30 MIN: FLOOD LT CRM FOSS LS
FAIR FOSS ϕ - NS LOTS CKY NO ODOR

60 MIN: LT CRM-FOSS CKY LS FAIR ϕ
NS NO ODOR

80 WH-LT CRM FN-XLN LS SLI-FOSS
NS NO ODOR

WH-LT CRM LS PTLY FOSS VUG ϕ
NS PTLY CKY

975# PSI

40 WH-LT CRM - LT TAN FUSSLD
LS FAIR ϕ - NS NO ODOR

FLOOD WH-LT CRM FN-XLN LS
DNSE-CKY POOR ϕ - NS

60 DK GRAY - BLK SHS

LOTS LT GRAY SH $\frac{1}{2}$ LT GRAY SILTY
SHS

← VISC: 47
WT: 9.3
LCM: 1#

80 WH-LT CRM MEALY CKY LS-NS

LT CRM FN-XLN SLI-FOSS LS
POOR ϕ - NS PTLY CKY NO ODOR

LANSING

3983

-1063

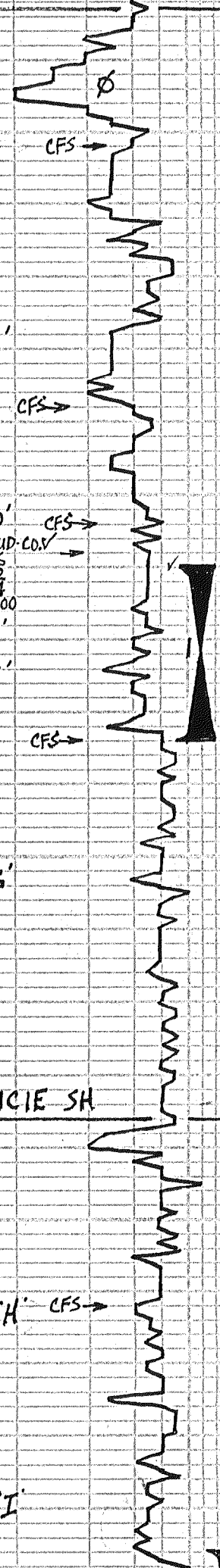
90
4000
10
20
30
40
50
60
70
80
90
4100
10
20
30
40
50
60
70
80
90
11200

visc: 56
wt: 9.2
filt: 6.4
chl: 2,100

MUNCIE SH

4136

-1216



- 00 PURE WH OOL LS PTLY ATY
POOR ϕ - NS NO ODOR
- 30 MIN: WH-LT CRM ODL LS
P-F OOL ϕ - NS LOTS CKY
- 60 MIN: WH-LT CRM FOSS LS
FAIR FOSS ϕ - NS LOTS CKY
NO ODOR
- WH-00C-FOSS CKY LS FAIR ϕ - NS
- 20 WH-LT CRM FN-XLN LS DNSE-
CKY POOR ϕ - NS NO ODOR
- 30 LT TAN FN-XLN DNSE LS POOR ϕ
NS NO ODOR
- 38) LT BLUE-GRY SHS & CRM SLI-FOSS
LS POOR ϕ - NS NO ODOR
- 30 MIN: WH-LT CRM SLI-FOSS LS
POOR ϕ NS NO ODOR FEW BRIGHT
ORANGE Δ
- 60 MIN: WH-LT CRM SLI-FOSS LS
POOR ϕ NS NO ODOR SLI CKY
- 50 PRED GRY-BRN-KUST SHS
- 54) LT CRM SLI-FOSS LS POOR ϕ NS
NO ODOR, SLI CKY
- 30 MIN: LT CRM SLI-FOSS LS POOR ϕ
NS PTLY CKY NO ODOR
- 60 WH-LT CRM SLI-FOSS LS -NS
- 70 WH-LT CRM SLI-FOSS LS DNSE-
CKY POOR ϕ - NS NO ODOR
- 80 WH-LT CRM FN-XLN LS POOR ϕ
DNSE-CKY NS NO ODOR
- 8A) LT CRM SLI-FOSS LS POOR ϕ 3RS
SCAT LT STN, NO FO, NO ODOR
- 30 MIN: 3RS LT CRM, SLI FOSS VUG
W/ P-F FOSS ϕ W/ S LT BRN FO
- TRACE GAS BUB, LT ODOR SLI CKY
- 60 MIN: DECR IN P.S W/SEO INC
IN CKY P.S
- LS & SH JUNK FROM TRIP
- 00 FLOOD WH-LT CRM FN-XLN LS
MOSTLY CKY-SOFT -NS NO ODOR
- 10 WH-LT CRM SUB OOC LS PTLY CKY
POOR ϕ - NS NO ODOR
- 20 WH-LT CRM FN-XLN CKY LS POOR ϕ
NS NO ODOR
- 30 FLOOD SNOW WH FN-XLN CKY LS
POOR ϕ - NS NO ODOR
- 40 WH-LT GRY FN-XLN LS PTLY CKY
POOR ϕ - NS, NO ODOR
- 50 BLK SHS & LT TAN GRANULAR LS
W/ P-F INTER-XLN ϕ W/ LT STN
NO FO, FT ODOR ON BREAK 3RS
- 60) 3RS LT TAN GRAN LS P-F ϕ W/
LT STN NO FO, FT ODOR ON BK
- 30 MIN: FLOOD WH FN-XLN LS
POOR ϕ - NS NO ODOR PTLY CKY
- 70 WH FN-XLN CKY LS POOR ϕ NS
- 80 WH-V-LT GRY FN-XLN LS POOR ϕ
NS NO ODOR LOTS CKY
- 90 LT TAN-LT ROOT BEER LS FN-XLN
POOR ϕ - NS NO ODOR, DK GRY SH
- 00 FLOOD LT CRM-V, LT TAN FN-XLN
LS POOR ϕ - NS DNSE-CKY NO ODOR
- 30 MIN: PRED WH-LT CRM FN-XLN
CKY LS - POOR ϕ - NS NO ODOR
- 60 MIN: PRED WH-LT CRM FN-XLN

SHORT TRIP 25 STDS.
COND HOLE 1 3/4 HRS.

DST #1 4060-4084

E-F ZONE 24' ANCHOR

30-30-30-30

IF: WIK SURF BLOW DIED 6 MIN

FF: NO BLOW-FLUSH-SURGE

REC: 45' MUD

SIP: 245-378

IFP: 7-10 FFP: 10-32

TEMP: 113

S.H.T = 1°

NO STRAP-BROKE TAPE

S.H.T = 1°

S.H.T = 1°

S.H.T = 1°

S.H.T = 1°

S.H.T = 1°

S.H.T = 1°

S.H.T = 1°

S.H.T = 1°

S.H.T = 1°

S.H.T = 1°

S.H.T = 1°

S.H.T = 1°

S.H.T = 1°

S.H.T = 1°

S.H.T = 1°

S.H.T = 1°

S.H.T = 1°

S.H.T = 1°

S.H.T = 1°

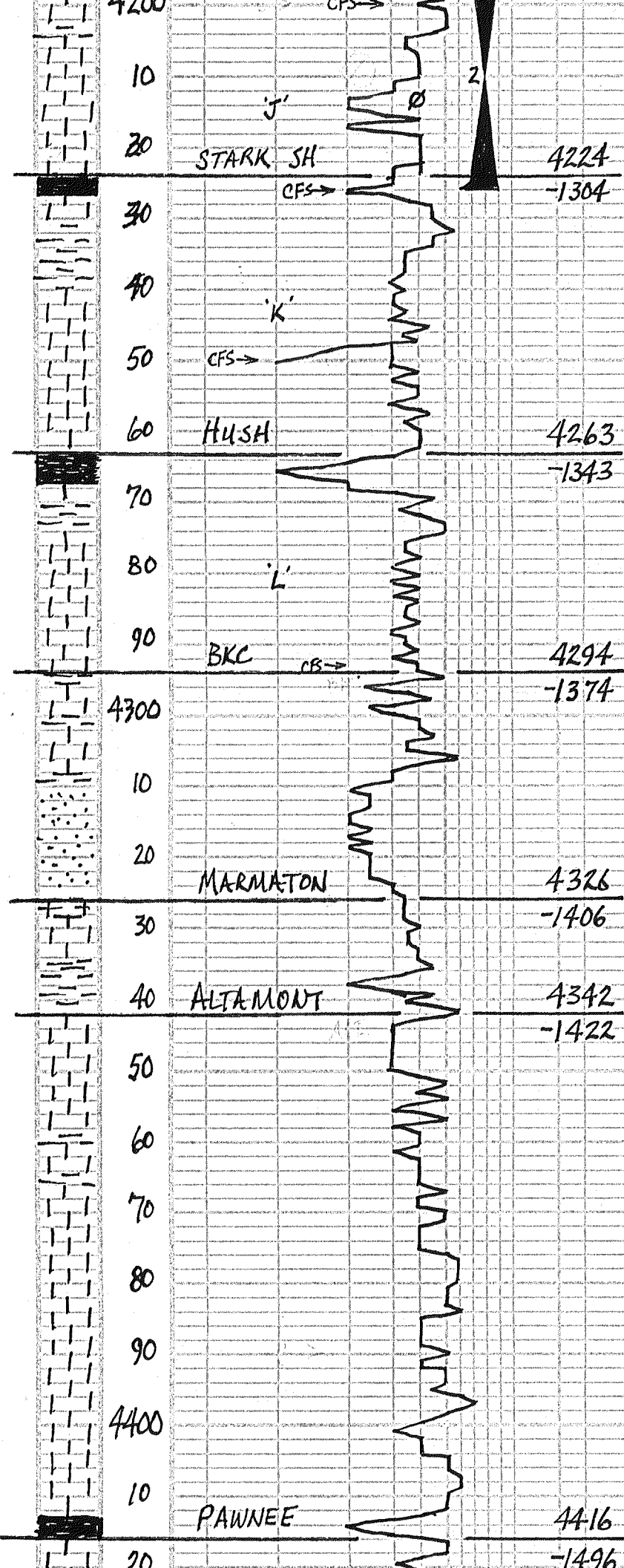
visc: 48
wt: 9.3
lcm: 1 1/2

MUD CO CKY
visc: 44
filt: 6.4
wt: 9.4
chl: 2,200

ADDING PRE-MIX

PIPE STRAP .75 SHORT

DST #2 4196-4226



10. WH-LTCRM FN-XLN LS POOR ϕ - NS NO ODOR
 2. PCS W/SCAT LT STN, NO FO NO ODOR
 20. WH-LTCRM SLI-FOSS LS POOR ϕ
 4. PCS SCAT LT STN
 26) 8-10 PCS WH-CRM SEMI-FOSS-DOL
 LS W/ FAIR ϕ W/SS BRNF LT ODOR
 4 PCS W/FSFD 2 PCS SAT STN-SSFD
 30 MIN: DECREASE IN PCS AA FEW
 W/SCAT STN, NO ODOR LOTS BLK SH
 60 MIN: WH-CRM LS AA-NS & BLK SH
 40 TAN BUFF FN-XLN DNSE LS
 POOR ϕ - NS NO ODOR & BLK SH
 50 TAN BUFF FN-XLN SLI-FOSS LS
 POOR ϕ - NS NO ODOR FUSS LDS
 30 MIN: WH-LT GRAY SLI-FOSS LS
 CKY-MEALY POOR ϕ - NS NO ODOR
 60 MIN: FLOOD WH-LT GRAY CKY LS
 POOR ϕ - NS NO ODOR
 60 WH-CRM-BUFF TAN FN-XLN LS
 POOR ϕ - NS NO ODOR
 70 LOTS SMOKEY GRAY Δ - $\frac{1}{2}$ LT GRAY
 FN-XLN LS POOR ϕ - NS NO ODOR
 80 FLOOD BLK CARB SHS
 90 CRM-BUFF FN-XLN MEALY LS
 POOR ϕ - NS & LT GRAY GRN SHS
 30 MIN: FLOOD WH-LTCRM FN-XLN
 CKY LS POOR ϕ - NS NO ODOR
 60 MIN: CRM-WH-V. LT GRAY LS
 FN-XLN DNSE-CKY - NS
 PRED WH-CRM FN-XLN LS
 10 POOR ϕ - NS NO ODOR
 LT GRAY GRN SHS & LT GRAY
 MEALY LS POOR ϕ - NS NO ODOR
 20 PRED WH-V. LT GRAY FN-XLN LS
 DNSE-CKY POOR ϕ - NS
 30 LOTS LT PEACH-BRN SHS & LT GRAY
 V. FN-GR SST & SILT STONE-MICA
 POOR ϕ - NS NO ODOR
 40 LOTS LTCRM-WH CKY LS POOR ϕ
 NS NO ODOR SOFT
 50 FEW BLK SHS & LOTS LT TAN-
 CRM FN-XLN LS POOR ϕ - NS
 60 WH-LTCRM-TAN FN-XLN LS
 DNSE-CKY - NS NO ODOR
 70 LTCRM-LT TAN FN-XLN LS POOR ϕ
 NS NO ODOR
 80 LTCRM-Dull WH FN-XLN LS
 POOR ϕ - NS NO ODOR
 90 PRED WH-LTCRM FN-XLN LS
 POOR ϕ DNSE-CKY - NS NO ODOR
 00 WH-LTCRM-LT TAN FN-XLN LS
 POOR ϕ - NS
 10 LT GRAY-LT CRM FN-XLN LS - NS
 NO ODOR
 20 LT GRAY-CRM FN-XLN LS POOR ϕ
 NS NO ODOR DNSE-CKY
 30 LOTS WH-LTCRM FN-XLN LS

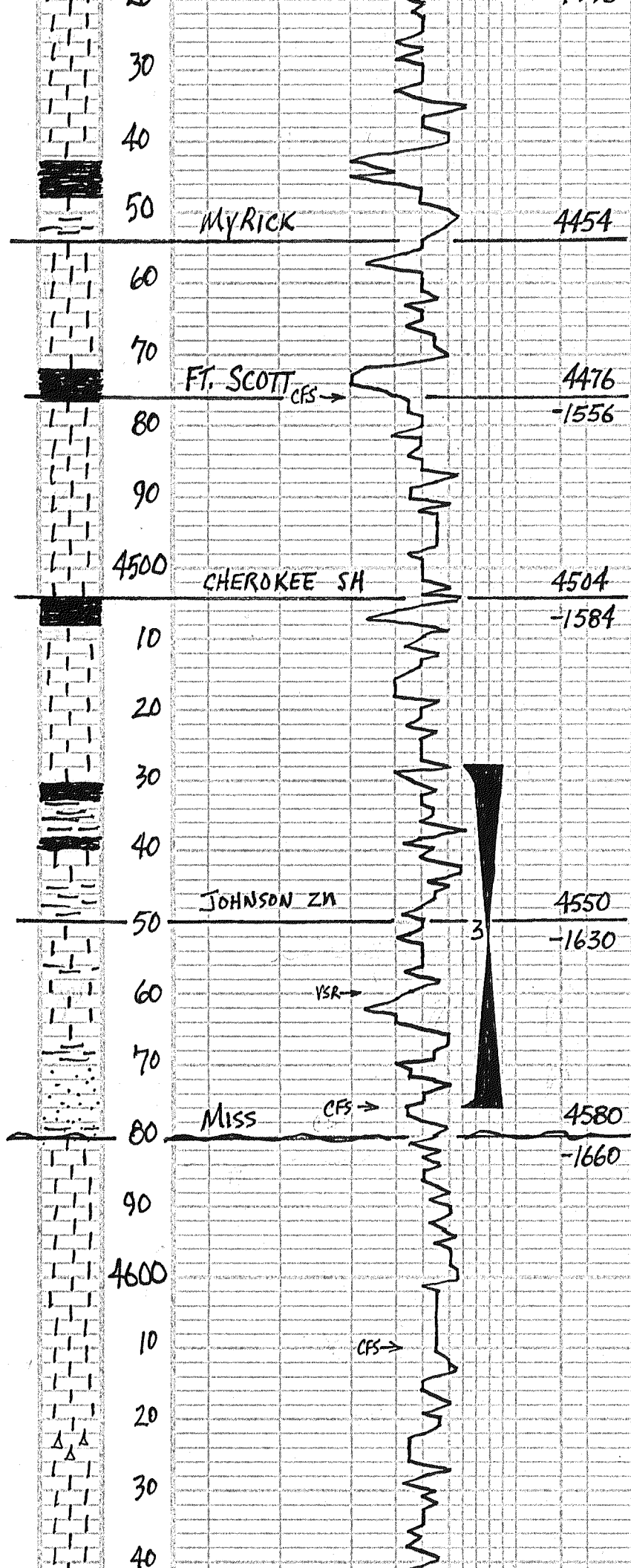
J ZONE 30' ANCHOR
 30-45-30-45
 IF: WK 3/4" BLOW THRU-OUT
 FF: WK SURF DIED 20 MINS.
 REC: 15' VSOCM = 2% OIL
 SIP: 1253-1147
 IFP: 9-14, 15-17
 TEMP: 117°

MUD CO. \checkmark
 VISC: 51 FILT: 7.2
 WT: 9.2 CHL: 2,000

VISC: 51
 WT: 9.4
 LCM: 1#

VISC: 53
 WT: 9.4

ADDING PREMIX



DNSE - CR4 FEN ATy - NS

40 FLOOD WH FN XLN LS POOR ϕ
NS NO ODOR PTL4 CR4

50 FLOOD LT GR4 FN XLN LS - SLI FOSS
POOR ϕ - NS NO ODOR

60 FLOOD BLK SHS! LS AA - NS

70 LTRM - LT TAN SLI FOSS LS POOR ϕ
NS, NO ODOR PTL4 CR4

76) PRED WH - LT CRM FN XLN LS
POOR ϕ SLI ATy - CR4 NS NO ODOR
30 MIN: FLOOD BLK SHS!

60 MIN: PRED BLK SH CRM, WH
FN XLN LS POOR ϕ - NS NO ODOR

90 LT GR4 - PEARL FN XLN LS POOR ϕ
DNSE NS, NO ODOR, V OOL NO ϕ

00 GR4 - CRM FN XLN LS PTL4 OOL
V POOR ϕ - NS NO ODOR

10 PRED V. LT GR4 FN XLN LS POOR ϕ
DNSE - CR4 NS, NO ODOR

20 LOTS BLK SHS!

30 FLOOD WH - LTRM FN XLN LS
POOR ϕ - NS NO ODOR DNSE -
CR4

40 WH - LT GR4 FN XLN LS POOR ϕ
CR4 - DNSE NS NO ODOR

50 FEW BLK SH $\frac{1}{2}$ LS AA - NS NO ODOR

60 TAN FN XLN SLI FOSS LS 5 PCS
W/S - FS DRFD IN P-F VUG ϕ LT ODOR

70 TAN SEMI FOSS LS PPT & VUG ϕ
15 PCS W/LT - DK STN 10 PCS W/SSLT -
DK FO, FAIR ODOR CLEAN SLI CR4

76) STILL 10 PCS TAN - CRM LS W/PET
& VUG ϕ W/SSLT & DRFD FAIR ODOR
1 INC IN CR4 PCS BUT SOME W/SSFO

30 MIN: FEW GOLD GRN GR4 FN - GR
SST - QUARTZITE POOR ϕ DIRTY - NS

60 MIN: PRED VARI COLOR SHS BUT
STILL FEW PCS JOZA W/SSFO

PRED SHS - GOLD GRN GR4 SILTY

90 LOTS SST FN - GR SHLY DIRTY POOR
 ϕ - NS NO ODOR

00 FLOOD LT TAN - CRM FN XLN LS
DNSE - CR4 POOR ϕ - NS NO ODOR

10) FLOOD WH CR4 MICRO - OOL LS
POOR ϕ - NS NO ODOR
30 FLOOD WH MICRO - OOL CR4 LS
POOR ϕ - NS NO ODOR

20 PRED WH MICRO - OOL LS PTL4
CR4 POOR ϕ - NS NO ODOR

30 WH - V. LT GR4 FN XLN LS POOR
 ϕ - NS NO ODOR

40 WH CR4 LS AA - NS & FAIR AMT
WH L V. LT GR4 SHARP A - NS

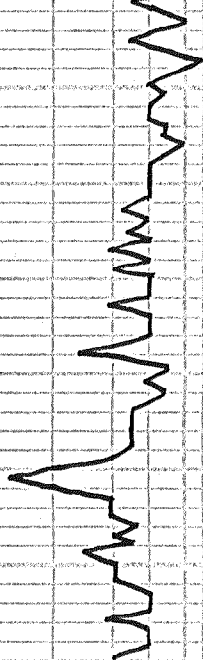
50 V. LT TAN MICRO - OOL LS POOR ϕ

JET #1 & ADD PRE-MIX

MUD COV
VISC: 59 FLIT: 7.6
WT: 9.1 CHL: 2,400

DST #3 4528-4576
JOHN ZN 48' ANCHOR
30-45-30-45
IF: WK 1/2" BLOW DIED 28 MINS
FF: FLUSH - SURGE - NO HELP
REC: 60' O/S MUD = 1% OIL
SIP: 210 - 292
IFP: 9-14 FFP: 14-47
TEMP: 121°

50
60
70
80
90
4700
10



RTD 4710
LTD 4710

NS NO ODOR

60 LT TAN FN-XLN MICRO-BDOL LS
POOR ϕ -NS

70 TAN FN-XLN LS POOR ϕ -NS
NO ODOR

80 FLOOD BRN-PURPLE SHS!

← JET #1, ADD PREMIX

90 LT BUFF-TAN OOL LS POOR ϕ
NS NO ODOR LPTS SHS

00 BUFF-FN-XLN LS POOR ϕ -NS
NO ODOR

10 WH-CRM-BUFF FN-XLN LS
POOR ϕ CRM-DNSE-NS

← VISC: 56
WT: 9.3

30 MIN: LS AA-NS NO ODOR

REACHED RTD 11:30 AM
CFS 30 MIN. PULLED 10 STDS
COND HOLE 1 1/2 HRS FOR LOG