

KEVIN L. KESSLER
CONSULTING PETROLEUM GEOLOGIST
(316) 522-7338

OPERATOR : MULL DRILLING CO INC.
LEASE : SANTEE WELL # : 1 - 17
LOCATION : 776' FNL & 1118' FWL
SEC: 17 TWP : 15 S RGE : 23 W
COUNTY : TREGO STATE : KANSAS

ELEVATION
KB : 2305
GL : 2297
MEASUREMENTS FROM
KB

CONTRACTOR : W W DRILLING RIG #12
COMM: 11 / 08 / 2012 COMP : 11 / 17 / 2012
RTD : 4375 LOG TD : 4374
SAMPLES SAVED FROM : 3600 TO: RTD
GEOLOGICAL SUPERVISION FROM : 3600 TO : RTD
MUD UP : 3500 TYPE MUD : CHEMICAL

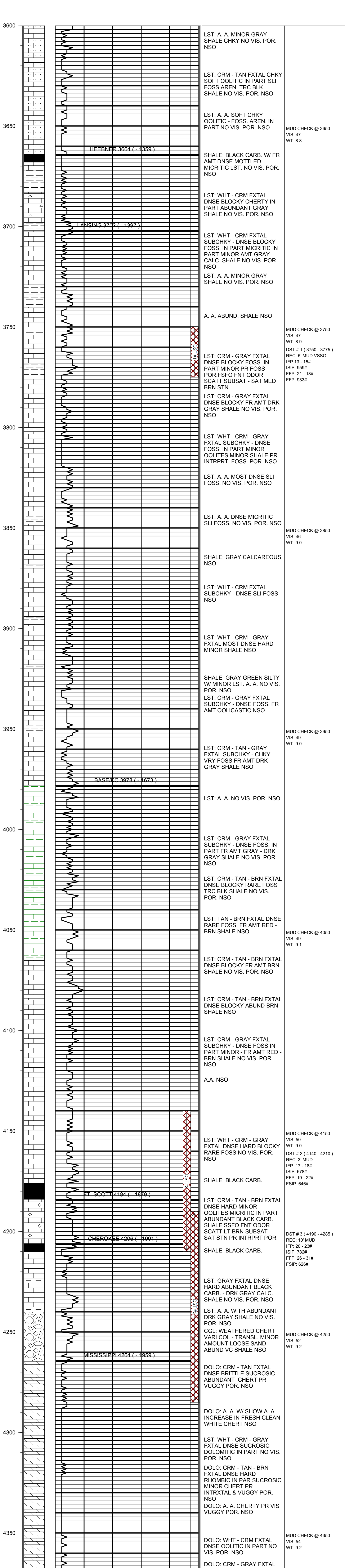
CASING RECORD
SURFACE :
8 5/8" @ 233'
PRODUCTION :
NONE

ELECTRICAL SURVEYS :
CDL/CNL
DIL
MICRO
SONIC

FORMATION	TOP	LOG	DATUM	TOP	SAMPLE	DATUM	STRUCT. COMP.
HEEBNER	3664		- 1359	3664		- 1359	+ 04
LANSING	3702		- 1397	3702		- 1397	+ 03
BASE/KC	3978		- 1673	3978		- 1673	+ 04
FORT SCOTT	4184		- 1879	4184		- 1879	+ 04
CHEROKEE	4206		- 1901	4206		- 1901	+ 04
MISSISSIPPI	4264		- 1959	4264		- 1959	+ 11

REFERENCE WELL FOR STRUCTURAL COMPARISON :

FRONTIER OIL # 1 HILL 'A' SEC 07 - T 15 S - R 23 W TREGO COUNTY KANSAS



COMMENTS:

DUE TO NEGATIVE DST RESULTS
THIS WELL WAS PLUGGED AS D & A

KEVIN L. KESSLER