

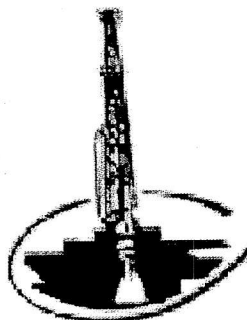
OPERATOR

Company: Victory Operating, Inc
Address: 6 N. Scottsdale St.
Wichita, KS 67230

Contact Geologist: Roscoe Mendenhall
Contact Phone Nbr: 316-648-5633
Well Name: Bert 1-36

Location: 8 5/8" @ 1048'
Pool: NE-NE-NW Sec. 36-T22S-R17W
State: Kansas

API: 15-145-21696
Field: Garfield
Country: USA



Musgrove

PETROLEUM CORPORATION
Claflin, Kansas

Scale 1:240 Imperial

Well Name: Bert 1-36
Surface Location: 8 5/8" @ 1048'
Bottom Location:
API: 15-145-21696
License Number:
Spud Date: 10/29/2012 Time: 9:00 AM
Region: Pawnee
Drilling Completed: 11/7/2012 Time: 5:00 PM
Surface Coordinates: 335' FNL & 2970' FEL
Bottom Hole Coordinates:
Ground Elevation: 2048.00ft
K.B. Elevation: 2059.00ft
Logged Interval: 3500.00ft To: 4350.00ft
Total Depth: 4350.00ft
Formation: Conglomerate
Drilling Fluid Type: Chemical/Fresh Water Gel

LOGGED BY

Company: Musgrove Petroleum
Address: 212 Main Street
Claflin, KS 67525

Phone Nbr: 620-450-7087
Logged By: Geologist

Name: Kurt Talbott

CONTRACTOR

Contractor: Sterling Drilling Company
Rig #: 2
Rig Type: mud rotary
Spud Date: 10/29/2012
TD Date: 11/7/2012
Rig Release:

Time: 9:00 AM
Time: 5:00 PM
Time:

ELEVATIONS

K.B. Elevation: 2059.00ft
K.B. to Ground: 11.00ft

Ground Elevation: 2048.00ft

NOTES

DST #1 4144-4171

NOTES

DST #1 4144-4171
Packer Failure

DST #2 4083-4171
Packer Failure

DST #3 4032-4171
Blow: BOB 20 Sec, Tool Slid, Reset Packer, BOB 25 sec
Recovery: 744' Mud
ISIP: 1269 psi FSIP: 1357 psi
IFP: 817-1269 psi FFP 1250 psi
HSH: 2002-1992 psi

DST #4 4158-4185
Blow: BOB 30 sec.
Recovery: 372' GCM (4% gas 96% mud)
124' WCM (40% wtr 60% mud)
62' MCW (70% wtr 30% mud)
ISIP 1064 psi FSIP 849 psi
IFP 412-408 psi FFP 427-452 psi
HSH 2042-1898 psi

DST #5 4194-4279
Packer Failure

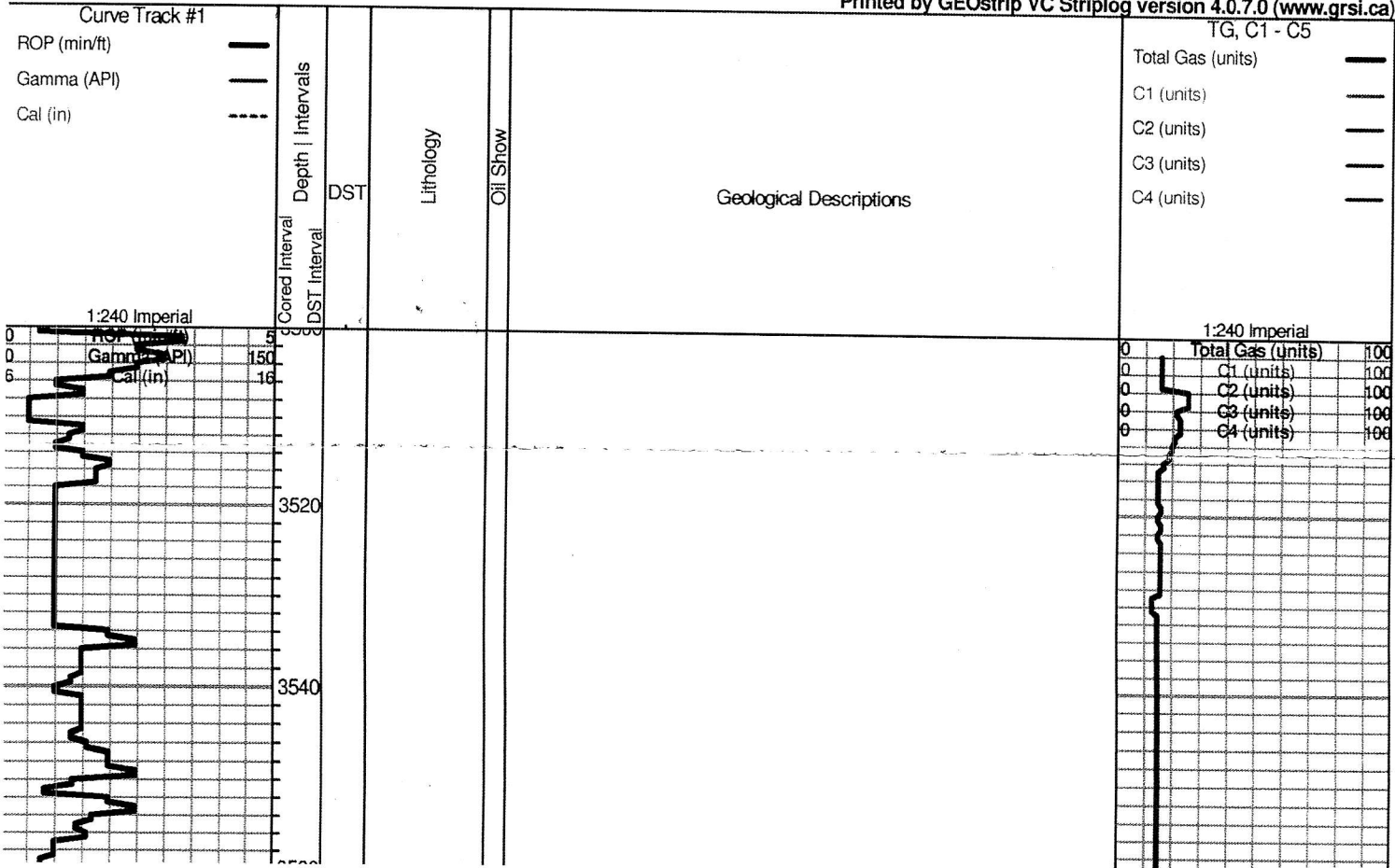
ROCK TYPES

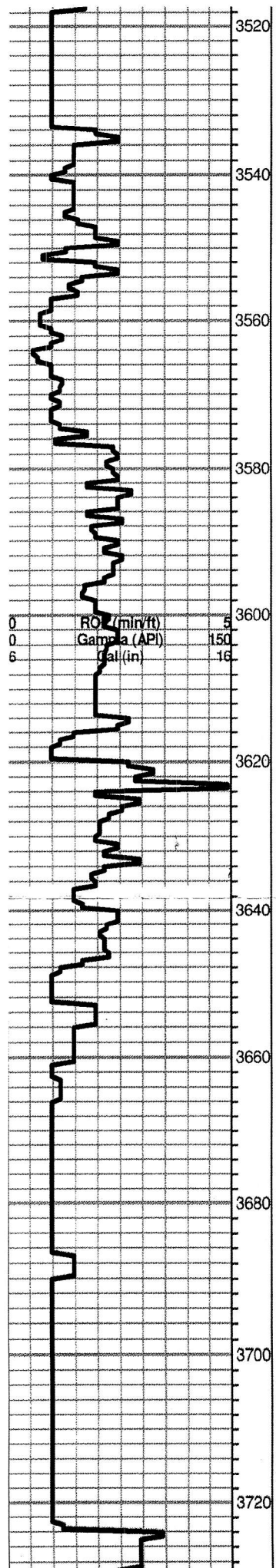
	Cht vari		shale, grn		Carbon Sh		Sltst
	Lmst fw<7		shale, gry		shale, red		

OTHER SYMBOLS

DST
 DST Int
 DST alt

Printed by GEOstrip VC Striplog version 4.0.7.0 (www.grsi.ca)





Ls-crm/tan/wht, f-med xln, slightly dolomitic, poor iner xln por, trace brwn spotty stns, NSFO chalky

Heebner 3614.0 (-1555.0)

Black carbon Shale

Shale-gry/gry, soft

Toronto 3634.0 (-1575.0)

Ls-crm/tan, fxln, poor vis por, slightly chalky

Douglas 3647.0 (-1588.0)

Shale-soft-mar/green

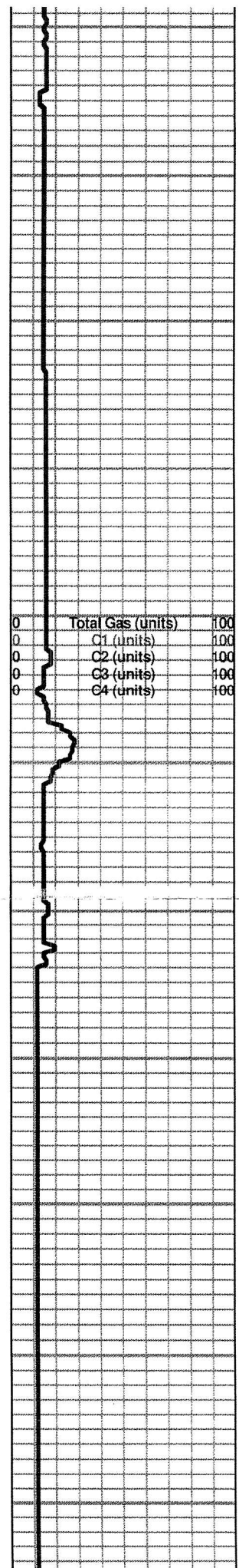
A/A slightly silty

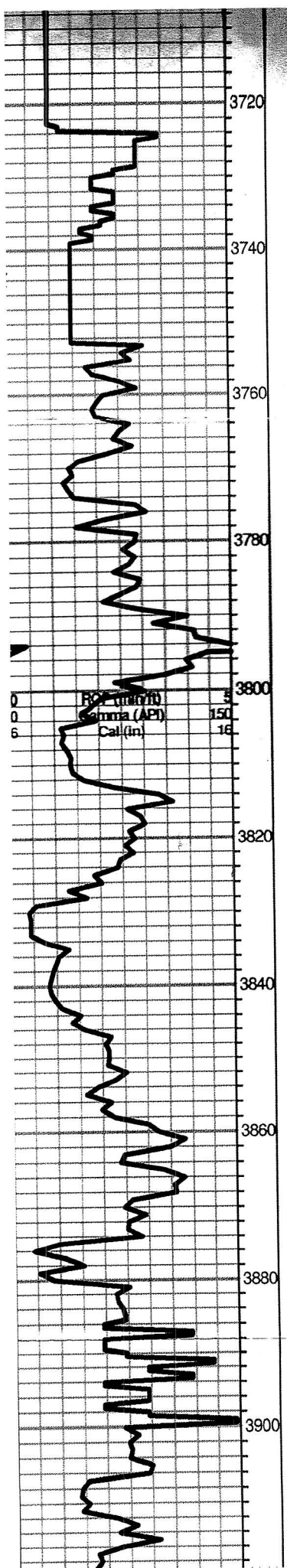
A/A

A/A

Brown Lime 3732.0 (-1663.0)

Ls-buff/brwn dense, cherty in part, poor vis por





Brown Lime 3732.0 (-1663.0)

Ls-buff/brwn dense, cherty in part, poor vis por

Lansing 3733.0 (-1674.0)

Ls-wht/crm, fxln, slightly ool, poor vis por, chalky, slightly cherty

Ls-Wht/crm, fxln, ool/fossils, poor vis por, chalky, cherty

A/A

Ls-wht/crm, fxln, ool, scattered, poor/fair oom por, chalky, cherty

Ls-tan/crm, fxln, poor vis por, chalky, cherty, shale-gry/grm

Ls-wht/crm, ool, fair oom por, chalky

Ls-wht/crm, ool/few fossils, chalky, poor vis por, cherty

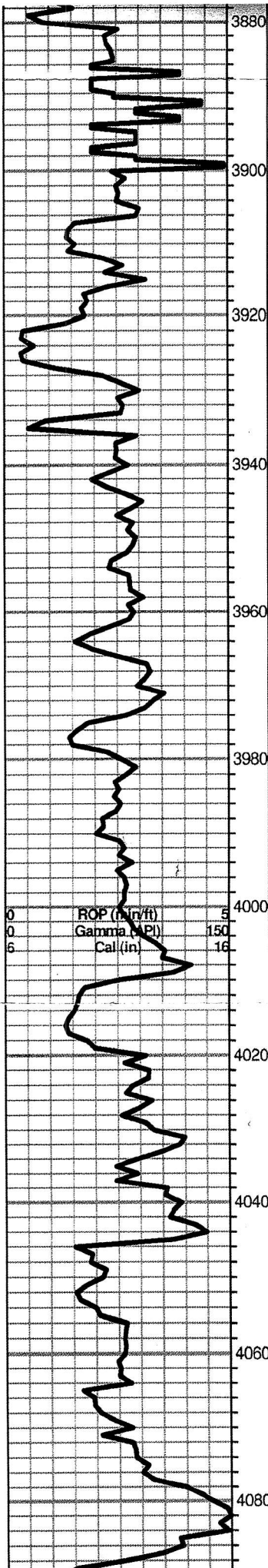
Ls-lt gry/wht, fxln, ool, poor scattered por, chert-gry/wht, chalky

Ls-crm/tan/lt gry, fxln, ool, few fossils, poor oom por, barren, chalky cherty

Ls-crm/tan, ool, poor vis por, chalky

A/A

0	Total Gas (units)	100
0	C1 (units)	100
0	C2 (units)	100
0	C3 (units)	100
0	C4 (units)	100



Ls-crm/tan/lt gry, fxln, ool, few fossils, poor oom por, barren, chalky cherty

Ls-crm/tan, ool, poor vis por, chalky

A/A

Ls-tan/crm, ool/fossils, poor scattered oom por,

Ls-crm/tan/wht, fxln, ool, poor iner ool por, chalky. Trace black carbon shale

Ls-wht/crm/lt gry, fxln, ool, scatterd poor oom por, chalky, cherty. Shale-gry silty-mica

Ls-crm/tan, fxln, ool, poor ppt to iner xln por, Trace brwn spotty stns ?? NSFO, no odor, chalky

Ls-lt gry/tan, fxln, scattered poor por, chalky, cherty

Ls-lt gry/tan, ool, poor scattered oom por, chalky

Base Kansas City 4007.0 (-1948.0)

Shale- gry/grn/mar

Ls-wht/crm, fxln, scatterd poor por,

A/A

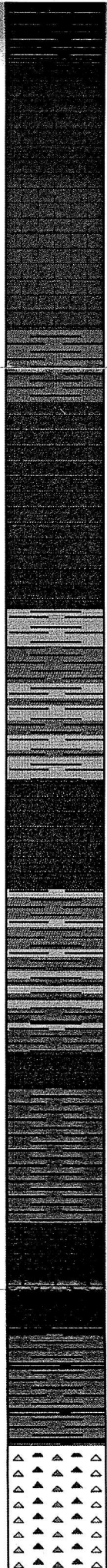
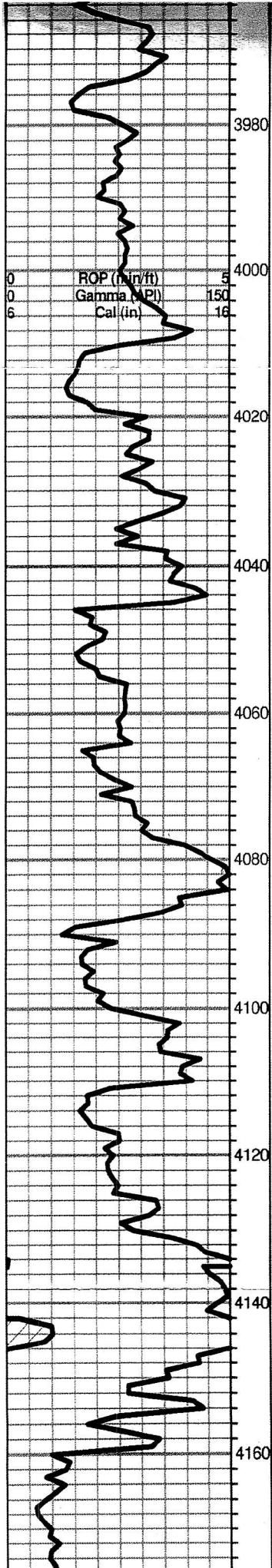
Ls-wht/crm/ lt gry, chalky, fxln, poor vis por, cherty

Ls-lt gry/tan, fxln, dense, poor vis por,

A/A scattered poor por

Ls-crm/tan, fxln, poor vis por, cherty, chalky

Total Gas (units)	100
C1 (units)	100
C2 (units)	100
C3 (units)	100
C4 (units)	100



Ls-crm/tan, fxln, ool, poor ppt to iner xin por, Trace brwn spotty stns ?? NSFO, no odor, chalky

Ls-lt gry/tan, fxln, scattered poor por, chalky, cherty

Ls-lt gry/tan, ool, poor scattered oom por, chalky

Base Kansas City 4007.0 (-1948.0)

Shale- gry/grn/mar

Ls-wht/crm, fxln, scattterd poor por,

A/A

Ls-wht/crm/ lt gry, chalky, fxln, poor vis por, cherty

Ls-lt gry/tan, fxln, dense, poor vis por,

A/A scattered poor por

Ls-crm/tan, fxln, poor vis por, cherty, chalky

Ls-crm/tan, fxln, ool, poor-fair oom por, chalky

Shale-gry/brwn/grn, mostly firm

Ls-crm/lt gry/tan, fxln, poor ppt por, chalky, Shale-gry/brwn

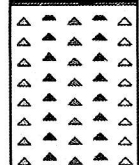
Shale-maroon/gry/brwn

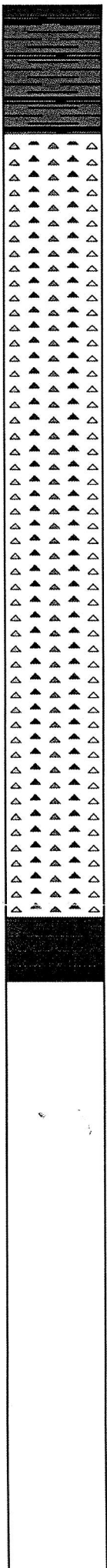
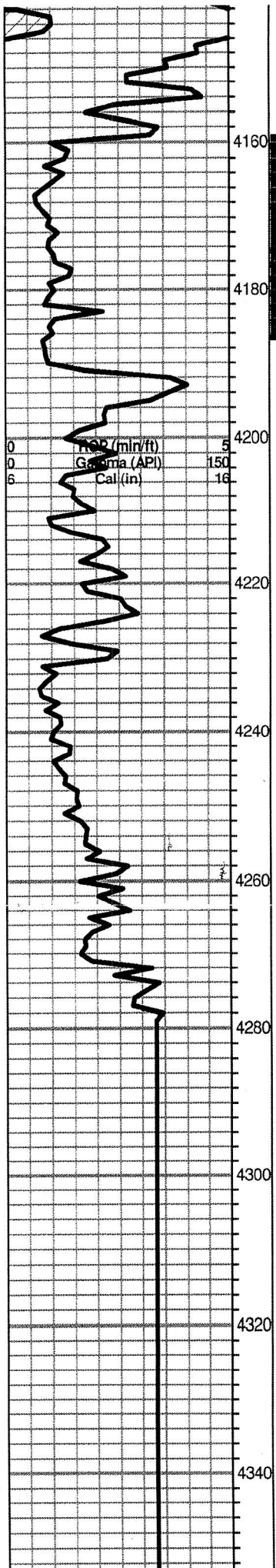
Ls-dense, poor por, Shale A/A

Conglomerate 4158.0 (-2099.0)

Chert-peach/boney wht/ gry, scattered semi trip to ppt, trace brwn stns, TrSFO, no odor, Trace-gry/grn vfg sand- friable, poor vis por

Total Gas (units)	100
C1 (units)	100
C2 (units)	100
C3 (units)	100
C4 (units)	100





Ls-dense, poor por, Shale A/A

Conglomerate 4158.0 (-2099.0)

Chert-peach/boney wht/ gry, scattered semi trip to ppt, trace brwn stns, TrSFO, no odor, Trace-gry/grn vfg sand- friable, poor vis por

Chert-boney wht/opaque/gry, scattered ppt por, golden brwn stains, Fair-good SFO, no odor

Chert- A/A- Trace Shaly Sand A/a

Chert-varying color, Shale A/A

Chert-peach/yellow/gry/ Shale-maroon/brwn/grn-mostly firm

A/A

Chert& Shale A/A,

Viola 4231.0 (-2172.0)

Chert- Varying, Shale-varying

A/A

Chert-fresh/boney wht, scattered ppt por, brwn stains, TrSFO, very faint odor. Ls-crm/wht, f-med xln, slightly dolomitic,

