



Fall & Associates
 Stake and Elevation Service
 719 W. 5th Street
 P.O. Box 404
 Concordia, KS. 66901
 1-800-536-2621

Date 2-5-13

Invoice Number 0104131

CHOLLA PRODUCTION, LLC
 Operator

1-2
 Number

Anderson
 Farm Name

Decatur-KS
 County-State

1 2s 30w
S T R

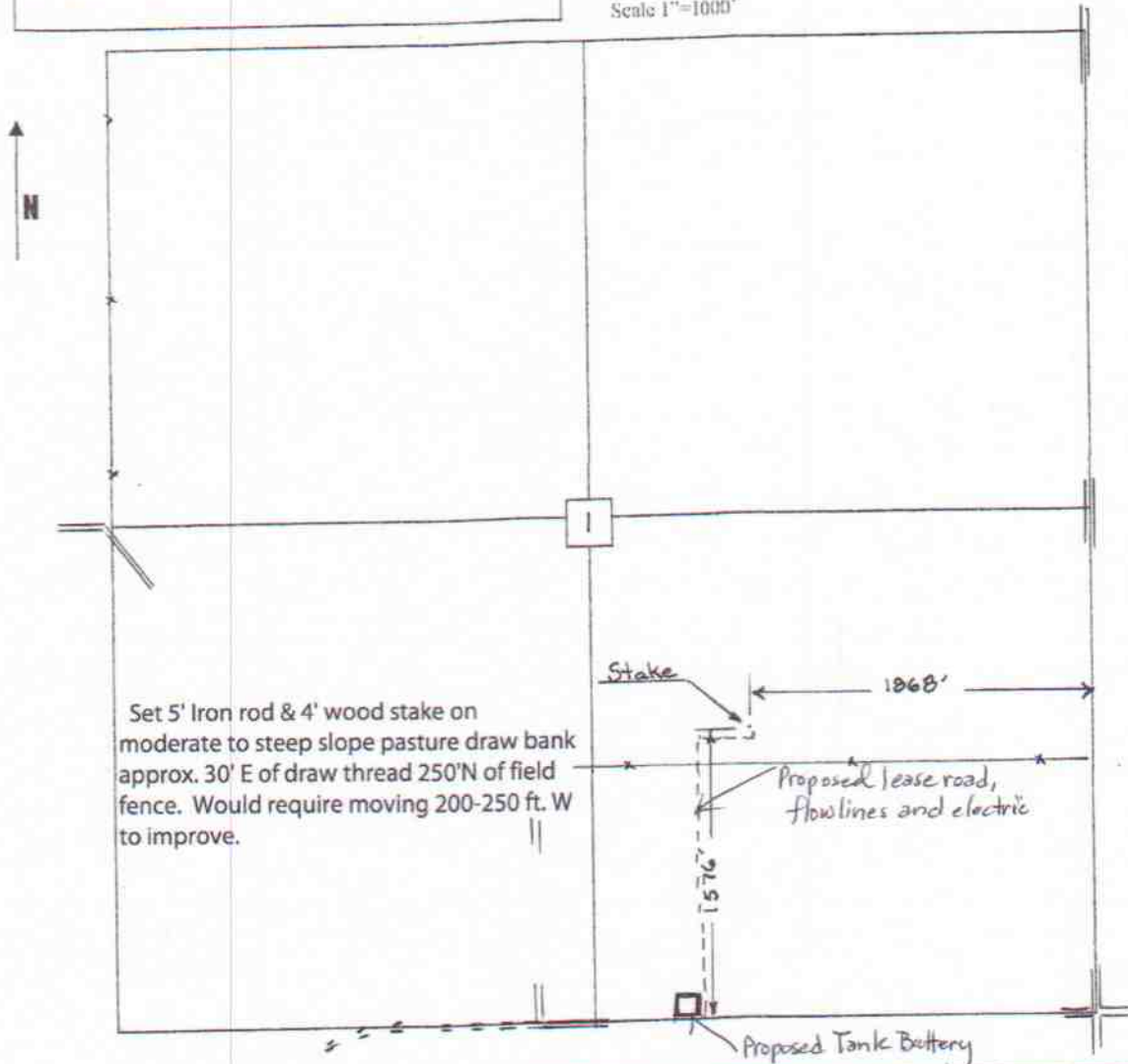
1567'FSL 1868'FEL
 Location

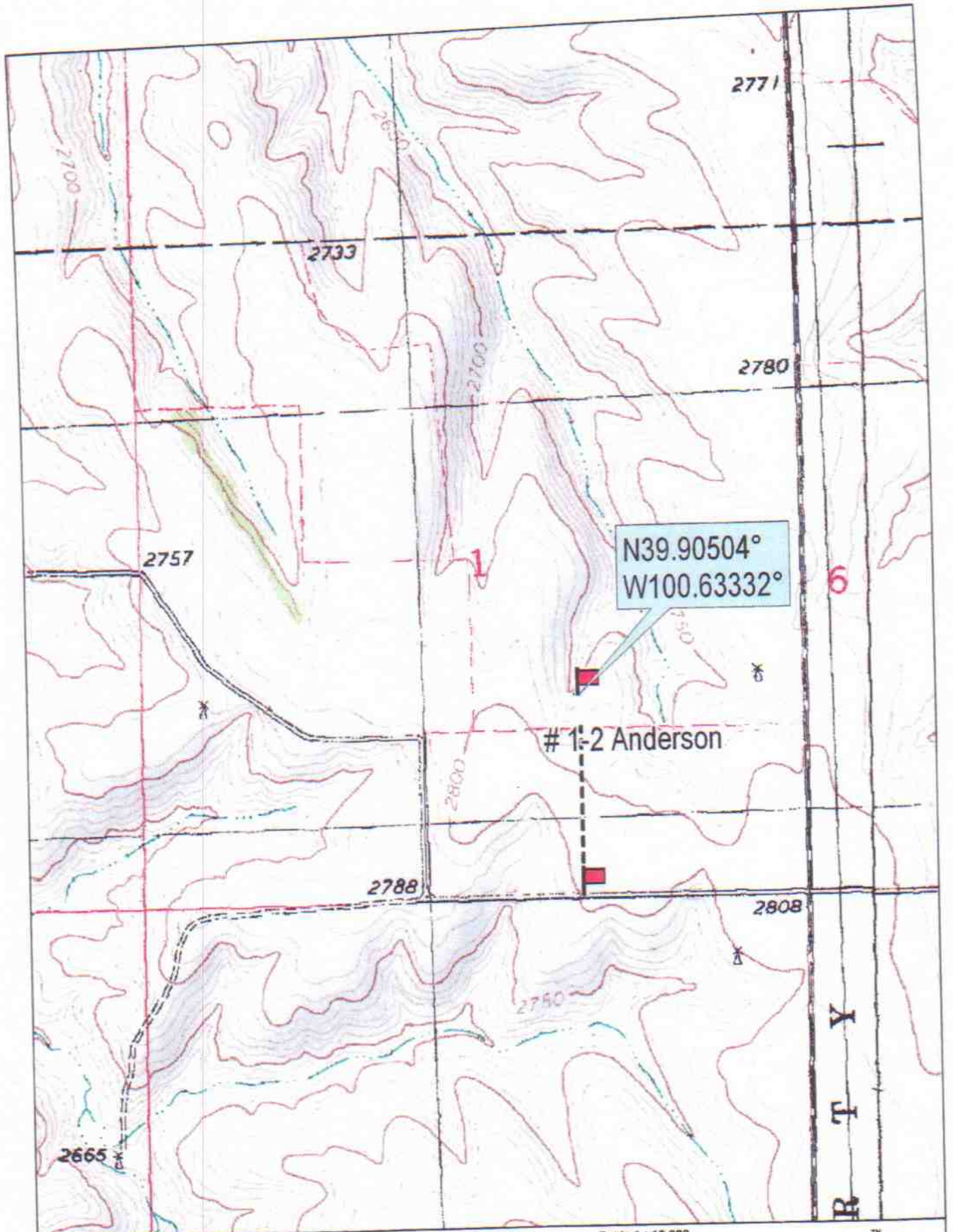
Elevation 2767 Gr.

Ordered By: Emily

Cholla Production, LLC
 10390 Bradford RD.
 Suite 201
 Littleton, CO. 80127

Scale 1"=1000'





N39.90504°
W100.63332°

1-2 Anderson



© 2002 DeLorme. 3-D TopoQuads®. Data copyright of content owner.
www.delorme.com

