

# ADVANTAGE ELEVATIONS

OIL FIELD SURVEYORS

BOX 8604 - PRATT, KS 67124  
(620) 672-6491

18134

INVOICE NO.

VAL ENERGY INC

OPERATOR

V1-21

NO.

BOLACK "B"

FARM

Cowley

COUNTY

21

S

32s

T

6e

R

NE SW SW NE

LOCATION

1336' GR

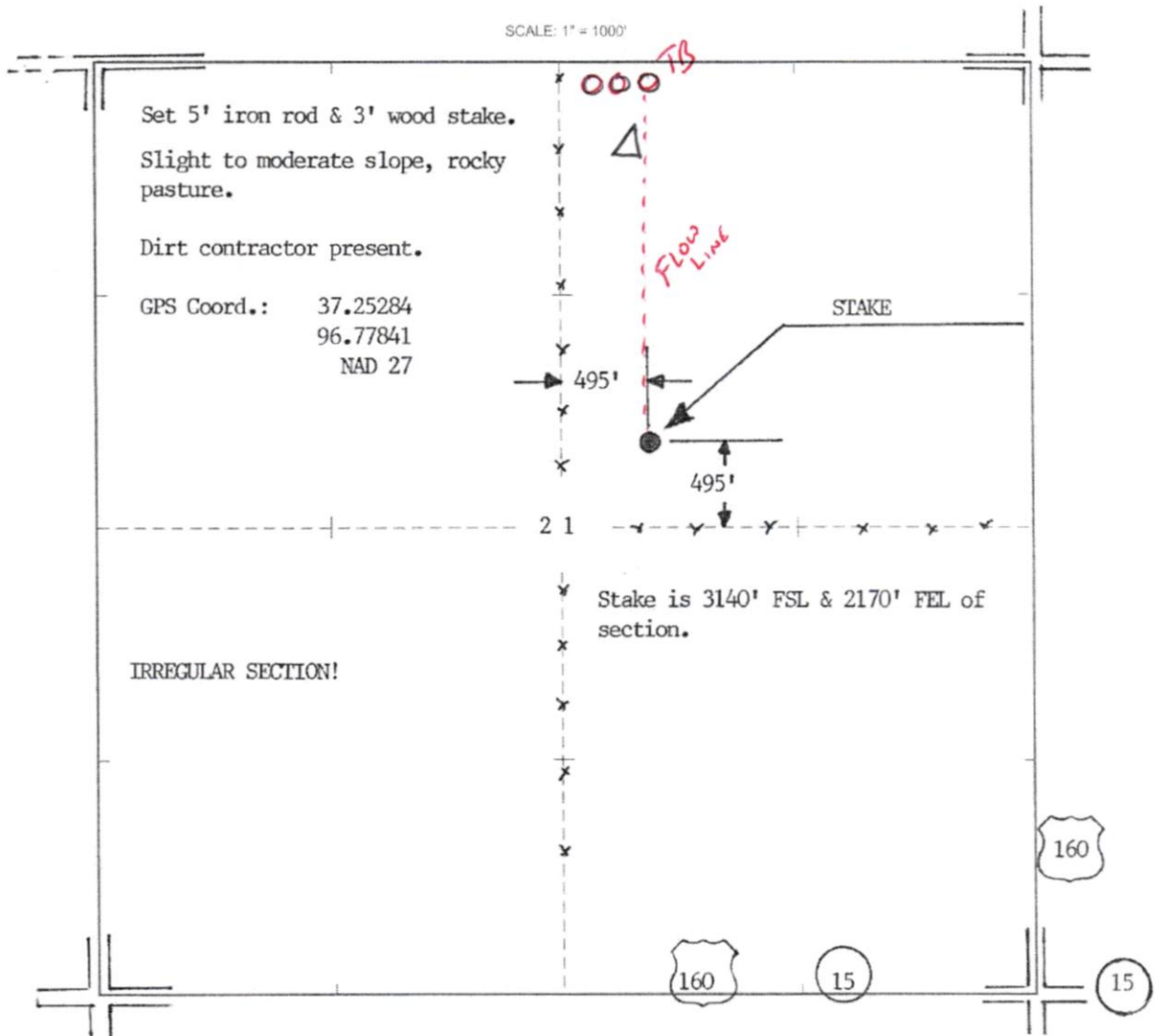
ELEVATION:



VAL ENERGY INC  
200 W Douglas Suite 520  
Wichita, KS 67202

AUTHORIZED BY: Todd Allam

SCALE: 1" = 100'



DATE STAKED: 2/4/13