

5/8" Rebar, 0.2'
Below Ground
E-W Fence
NAD 27 Kansas South
N: 272214.75
E: 2116528.76

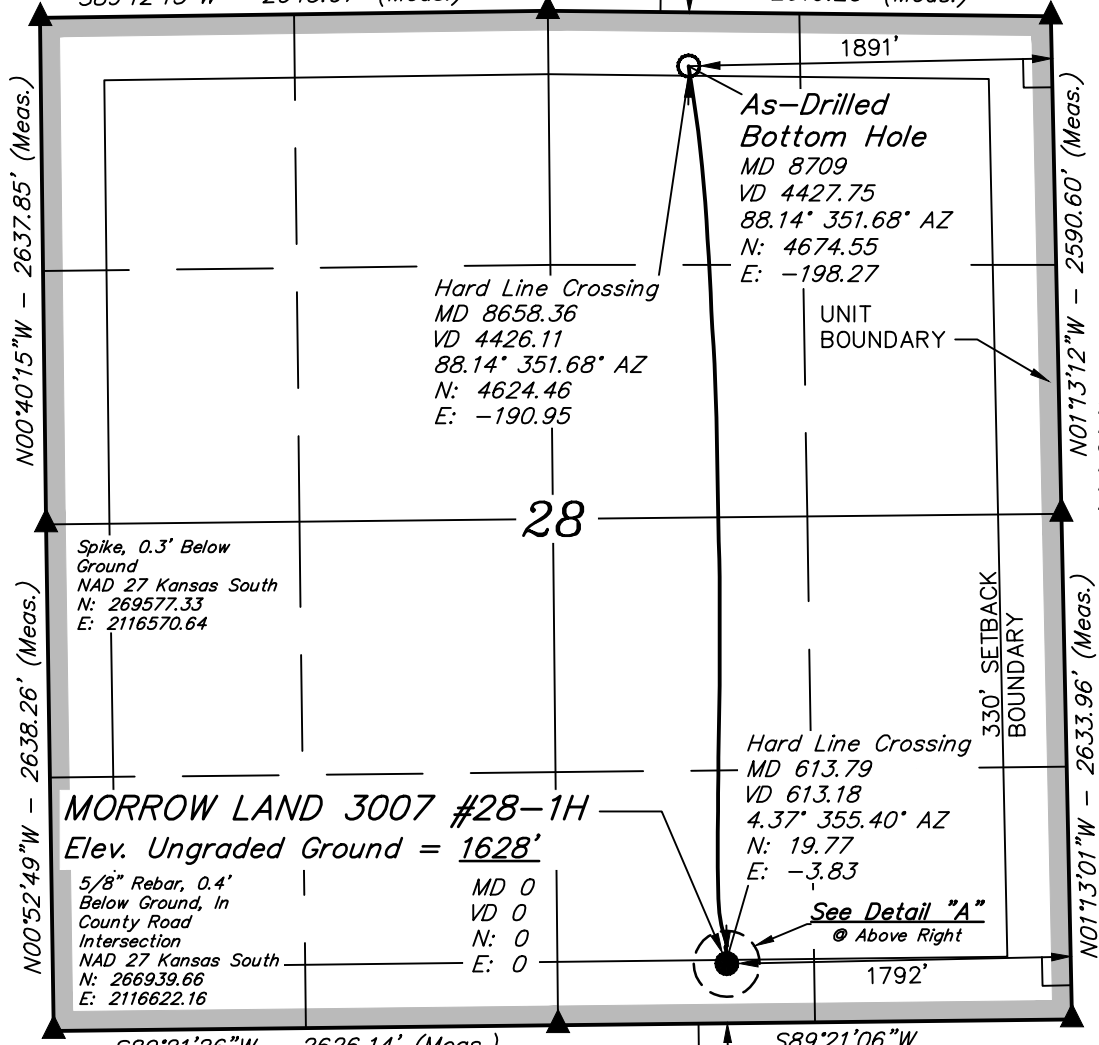
T30S, R7W, 6th P.M.

5/8" Rebar, 0.3' Above Ground,
E-N-W Fence Corner
NAD 27 Kansas South
N: 272262.55
E: 2119173.28

Spike, 0.2' Below
Ground, In Gravel
Road
NAD 27 Kansas South
N: 272244.25
E: 2121792.31

SGOMI

Well location, MORROW LAND 3007 #28-1H, located as shown in the SW 1/4 SE 1/4 of Section 28, T30S, R7W, 6th P.M., Kingman County, Kansas.

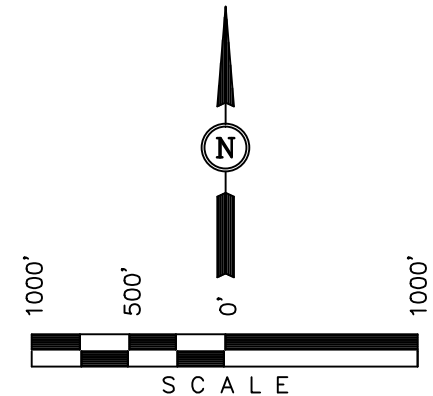
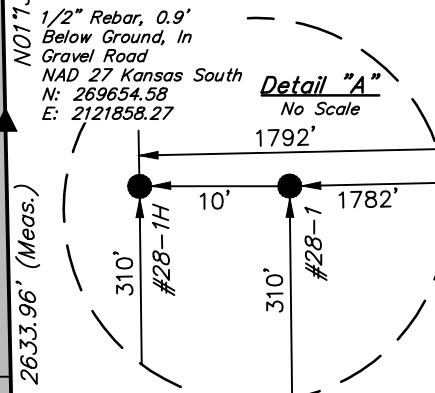


BASIS OF ELEVATION

SPOT ELEVATION LOCATED AT THE NORTHEAST CORNER OF SECTION 22, T33S, R7W, 6th P.M. TAKEN FROM THE ANTHONY, QUADRANGLE, KANSAS, HARPER COUNTY, 7.5 MINUTE QUAD (TOPOGRAPHIC MAP) PUBLISHED BY THE UNITED STATES DEPARTMENT OF THE INTERIOR, GEOLOGICAL SURVEY. SAID ELEVATION IS MARKED AS BEING 1348 FEET.

BASIS OF BEARINGS

BASIS OF BEARINGS IS A G.P.S. OBSERVATION.



CERTIFICATE

THIS IS TO CERTIFY THAT THE ABOVE PLAT WAS PREPARED FROM FIELD NOTES OF ACTUAL SURVEYS MADE BY ME OR UNDER MY SUPERVISION AND THAT THE SAME ARE TRUE AND CORRECT TO THE BEST OF MY KNOWLEDGE AND BELIEF.

Robert S. Smith
 REGISTERED LAND SURVEYOR
 REGISTRATION NO. 1966
 STATE OF KANSAS
 02-08-13

LEGEND:

- └─┘ = 90° SYMBOL
- = PROPOSED WELL HEAD.
- ▲ = SECTION CORNERS LOCATED.

Flagged Spike, 0.2' Below Ground, In Gravel Road NAD 27 Kansas South N: 266980.08, E: 2119247.89

5/8" Rebar, 0.7' Below Ground, In County Road Intersection NAD 27 Kansas South N: 267021.55, E: 2121925.20

NAD 83 (#28-1H AS-DRILLED BOTTOM HOLE)	NAD 83 (#28-1H SURFACE LOCATION)
LATITUDE = 37°24'46.48" (37.412911)	LATITUDE = 37°24'00.26" (37.400072)
LONGITUDE = 98°05'14.99" (98.087497)	LONGITUDE = 98°05'12.55" (98.086819)
NAD 27 (#28-1H AS-DRILLED BOTTOM HOLE)	NAD 27 (#28-1H SURFACE LOCATION)
LATITUDE = 37°24'46.41" (37.412892)	LATITUDE = 37°24'00.20" (37.400056)
LONGITUDE = 98°05'13.77" (98.087158)	LONGITUDE = 98°05'11.33" (98.086481)
STATE PLANE NAD 27 (KANSAS SOUTH)	STATE PLANE NAD 27 (KANSAS SOUTH)
N: 271977.42 E: 2119907.78	N: 267303.89 E: 2120125.54

UINTAH ENGINEERING & LAND SURVEYING		
85 SOUTH 200 EAST - VERNAL, UTAH 84078		
(435) 789-1017		
SCALE 1" = 1000'	DATE SURVEYED: 11-01-11	DATE DRAWN: 02-08-13
PARTY L.S. K.H. C.A.G.	REFERENCES G.L.O. PLAT	
WEATHER COOL	FILE SGOMI	