

ADVANTAGE ELEVATIONS

OIL FIELD SURVEYORS

BOX 8604 - PRATT, KS 67124
(620) 672-6491

130131

INVOICE NO.

R & B OIL & GAS

OPERATOR

1

NO.

COLBORN 'B'

FARM

Barber

COUNTY

23

S

33s

T

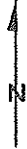
12w

R

990' FNL & 2310' FNL of Sec.

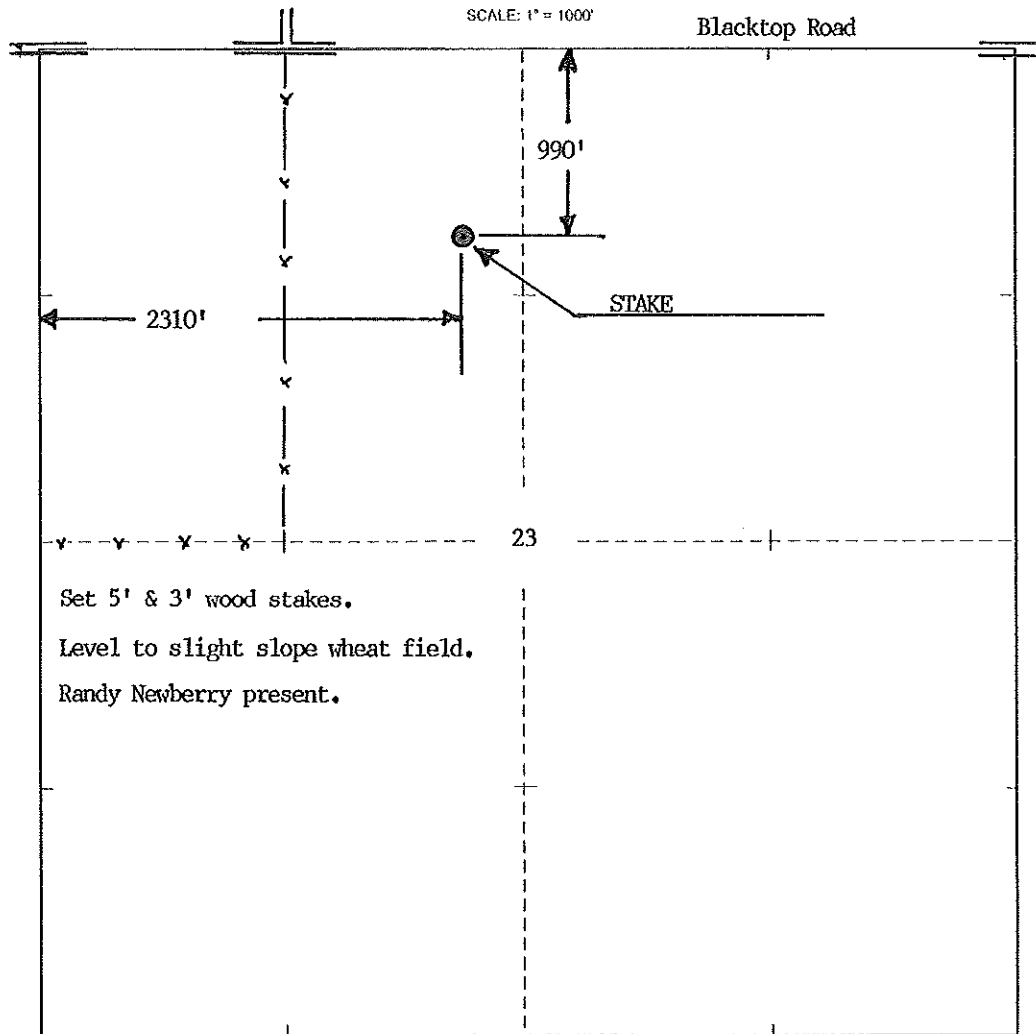
LOCATION

ELEVATION: 1457' GR

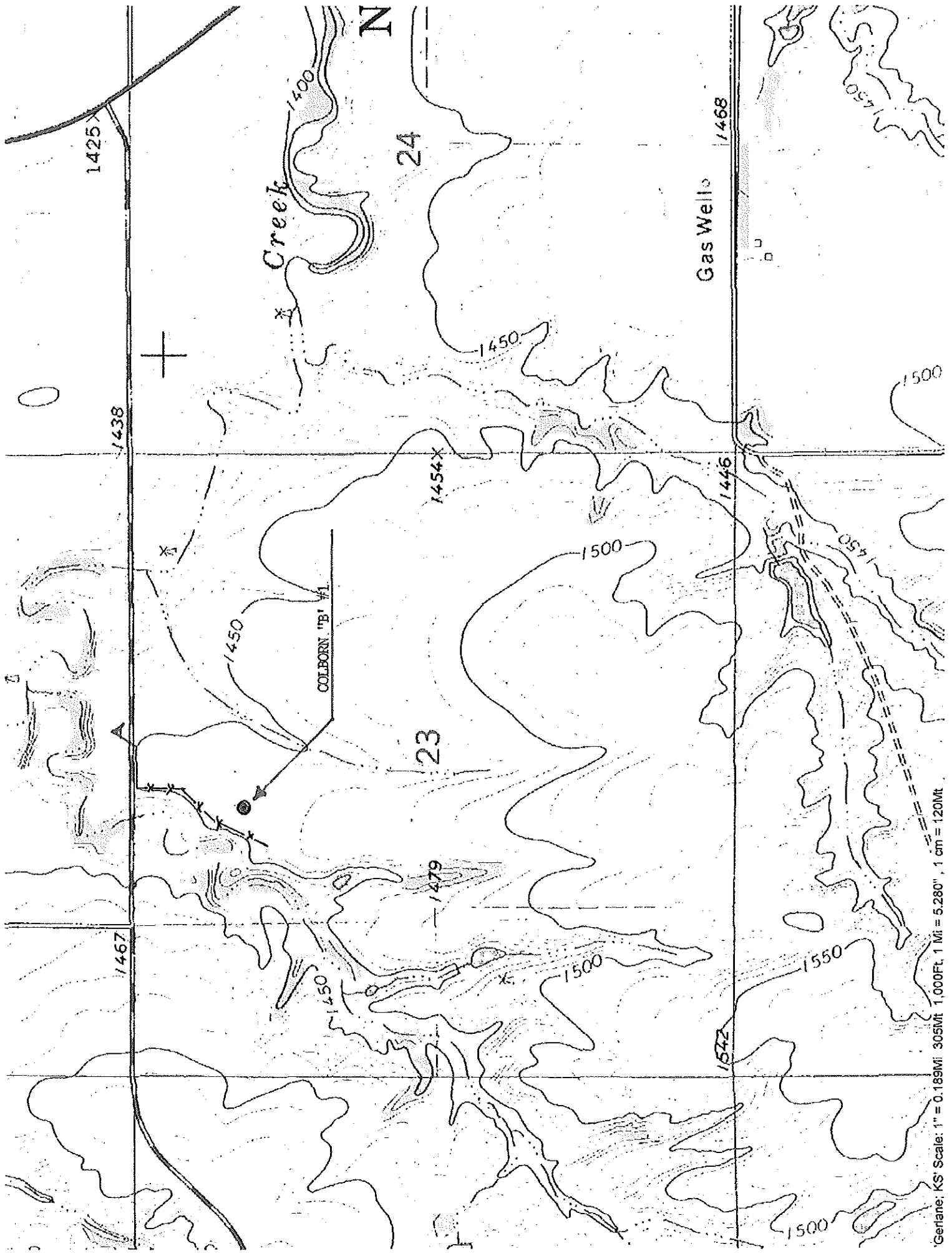


R & B OIL & GAS
PO Box 195
Attica, KS 67009-0195

AUTHORIZED BY: Randy Newberry



DATE STAKED: 2/1/13



Gerlane; KS Scale: 1" = 0.189Mi 305Mt 1,000Ft. 1 Mi = 5.280", 1 cm = 120Mt