



## Woolsey Operating Company, LLC

Scale 1:240 (5"=100') Imperial

Measured Depth Log

Well Name: TUCKER GU A-3  
Location: Approx NW NE SW NW  
License Number: API: 15-007-23940-00-00  
Spud Date: October 15, 2012  
Surface Coordinates: Section 28-T33S-R10W, 1450'FNL, 810' FWL  
Spicer Pool  
Bottom Hole Vertical Hole  
Coordinates:  
Ground Elevation (ft): 1458 K.B. Elevation (ft): 1468  
Logged Interval (ft): 3900 To: 5050 Total Depth (ft): 5050  
Formation: McLish Shale  
Type of Drilling Fluid: Chemical Mud, Displace at 3200'.  
Region: Barber County, Kansas  
Drilling Completed: October 24, 2012

Printed by WellSight Log Viewer from WellSight Systems 1-800-447-1534 [www.WellSight.com](http://www.WellSight.com)

### OPERATOR

Company: Woolsey Operating Company, LLC  
Address: 125 N. Market, Suite 1000  
Wichita, KS 67202

### GEOLOGIST

Name: W. Scott Alberg  
Company: Alberg Petroleum, LLC  
Address: 609 Meadowlark Lane  
Pratt, Kansas 67124

## FORMATION TOPS

### SAMPLE TOPS

### LOG TOPS

HUSHPUCKNEY SHALE	4317(-2849)	4318(-2850)
B/KC	4371(-2903)	4372(-2904)
PAWNEE	4462(-2994)	4465(-2997)
CHEROKEE GROUP	4513(-3045)	4512(-3044)
MISSISSIPPIAN	4544(-3076)	4541(-3073)
KINDERHOOK SHALE	4770(-3302)	4773(-3305)
WOODFORD SHALE	4841(-3373)	4841(-3373)
VIOLA	4882(-3414)	4884(-3416)
SIMPSON GROUP	4969(-3501)	4970(-3502)
SIMPSON SAND	4984(-3516)	4982(-3514)
MCLISH SHALE	5041(-3573)	5042(-3574)
RTD	5050(-3582)	
LTD		5052(-3585)

## COMMENTS

Surface Casing: Set 5 joints 10 3/4" at 215'(tallied 202') with 240 sxs Class A, 2% gel, 3% cc, plug down at 12:00 pm on October 15, 2012. Cement did Circulate.

Production Casing: 5 1/2" Casing Ran.

Deviation Surveys: 3/4 - 215', 3/4 - 541', 1/2-882', 1/2 - 1408', 3/4 - 1875', 1 - 2369', 2 1/2 2769', 1 -13169', 1 3/4 - 3447', 1 - 3941', 1-4283', 3/4 - 5050'.

Contractor Bit Record:

1- 14 3/4" out at 215'.

2- 7 7/8" (PDC) out at 4283'.

3 - 7 7/8" out at 5050'.

Pipe Strap at 4283', Strap 4.49' long to board.

Gas Detector: Woolsey Operating Company, Trailer #1

Mud System: Mud Co, Brad Bortz, Engineer

DSTs: NONE

Logged by Superior Well Services.

LTD - 5053'.

## DSTs

No DST's Run

## CREWS

Hardt Drilling, Inc Rig #1

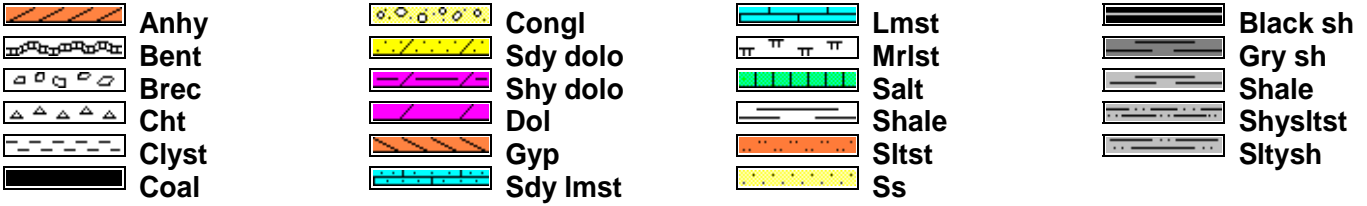
Tool Pusher - Scott Adelhardt

Drillers - Days - Steve Myers

Evening - Jody Divine

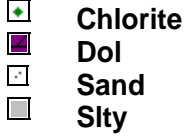
Morning - Billy Maas

### ROCK TYPES

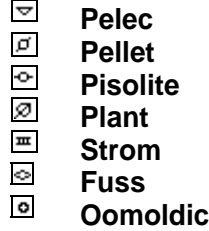
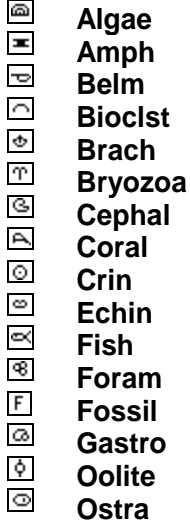


### ACCESSORIES

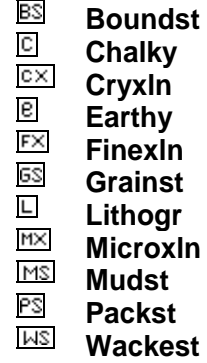
#### MINERAL



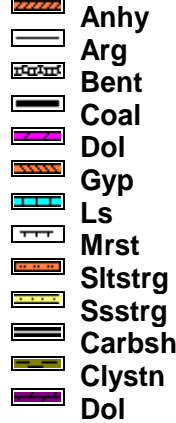
#### FOSSIL



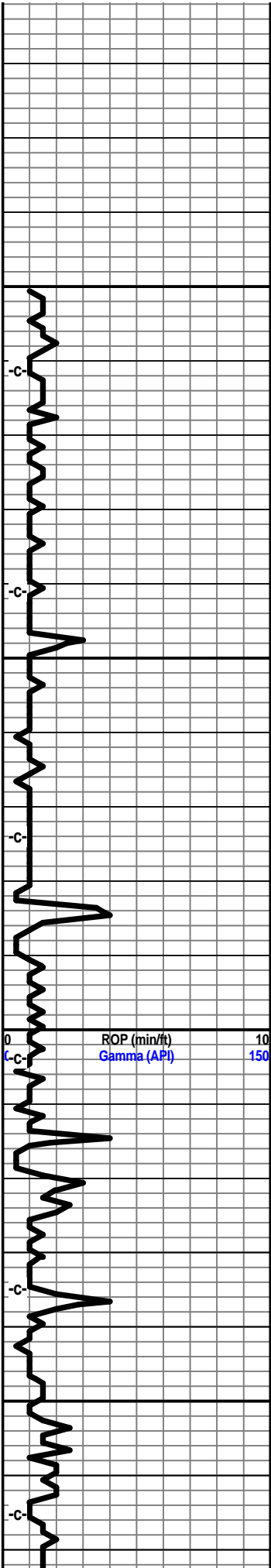
#### TEXTURE



#### STRINGER



Curve Track 1		Depth	Lithology	Geological Descriptions	TG, C1-C5				
ROP (min/ft)	Gamma (API)				TG (units)	C1 (units)	C2 (units)	C3 (units)	C4 (units)
0	0	38			0				200
10	150								
		3850		<p>Drilling Progress</p> <p>October 15, 2012 MIRT Spud</p> <p>October 16, 2012 215' @ 7:00 am</p> <p>October 17, 2012 1285' @ 7:00 am</p> <p>October 18, 2012 2233' @ 7:00 am</p> <p>October 19, 2012 3011' @ 7:00 am</p> <p>October 20, 2012 3756' @ 7:00 am</p> <p>October 21, 2012 4325' @ 7:00 am</p> <p>October 22, 2012 4596' @ 7:00 am</p> <p>October 23, 2012 4867' @ 7:00 am</p> <p>October 24, 2012 5050' @ 7:00 am</p>					



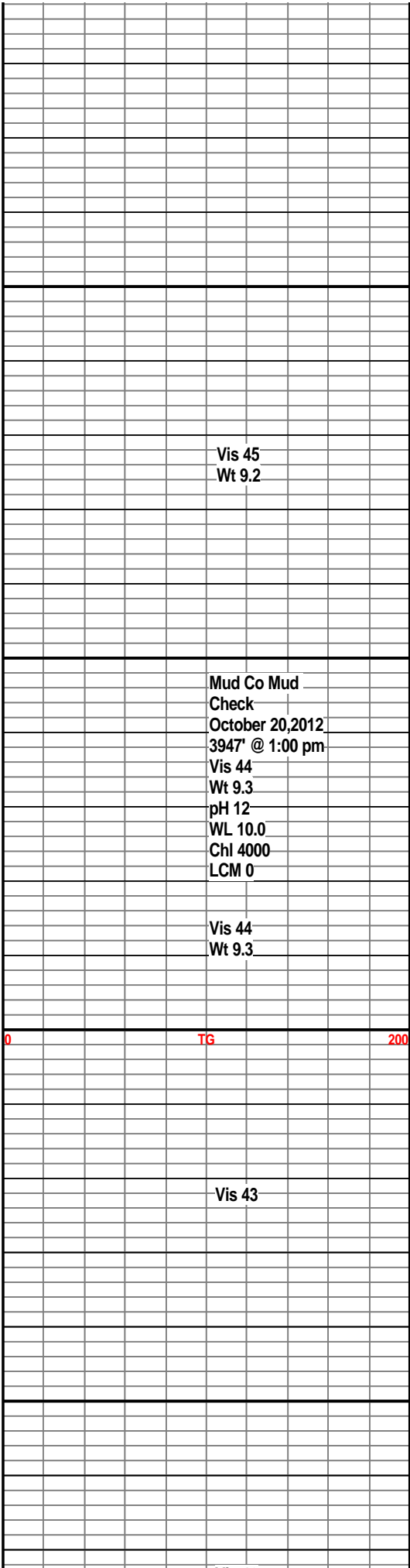
3900

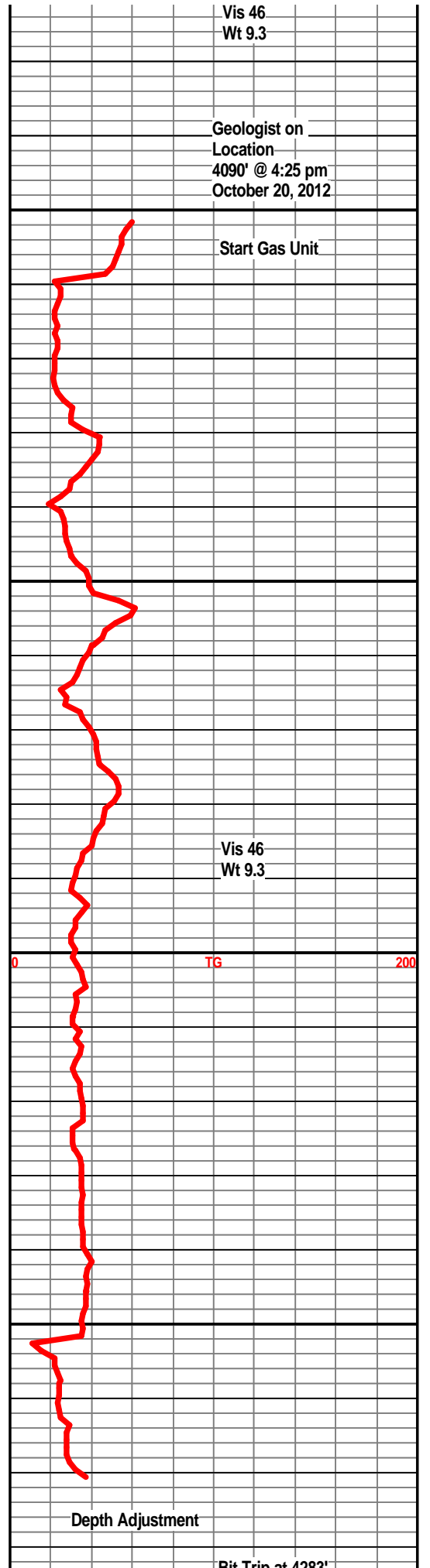
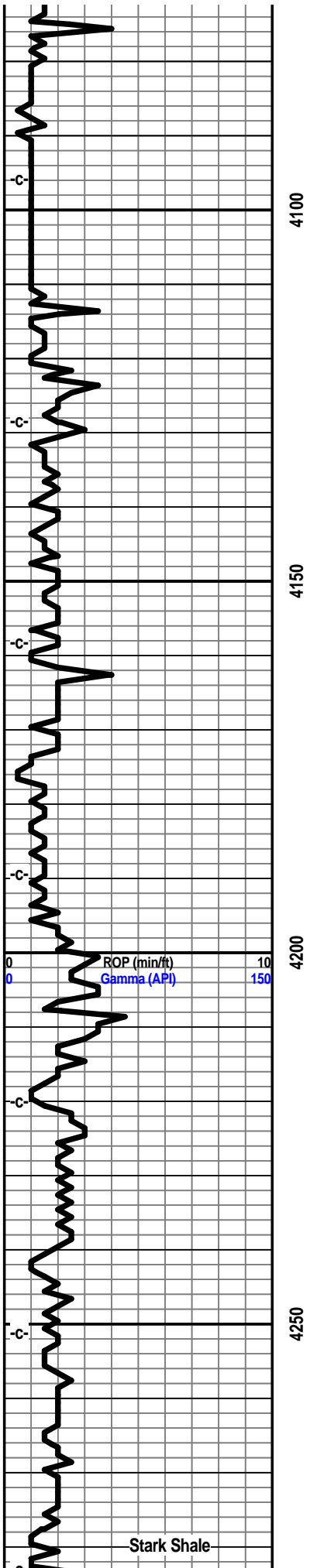
3950

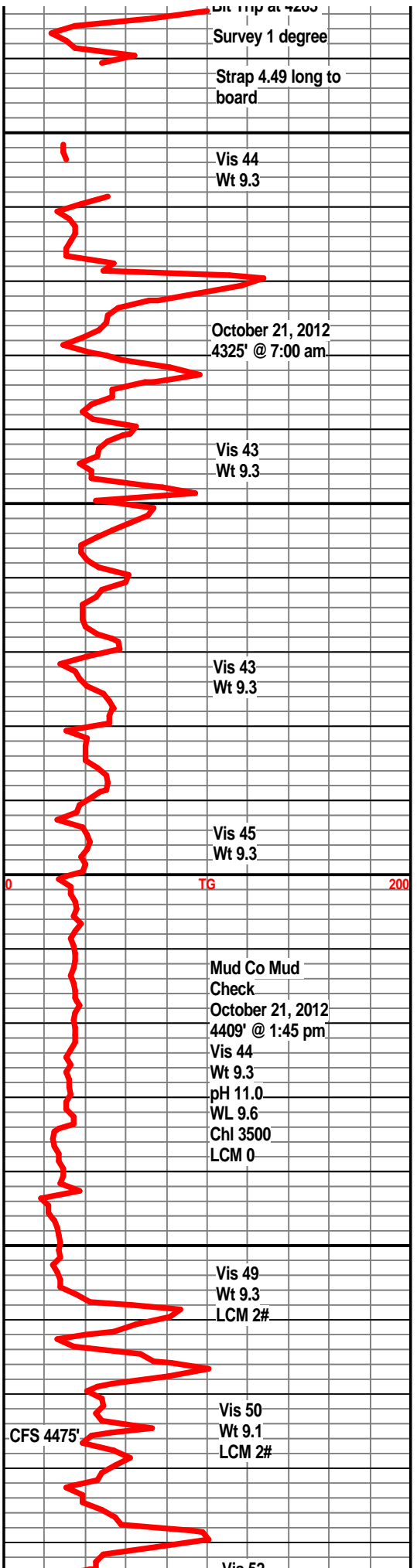
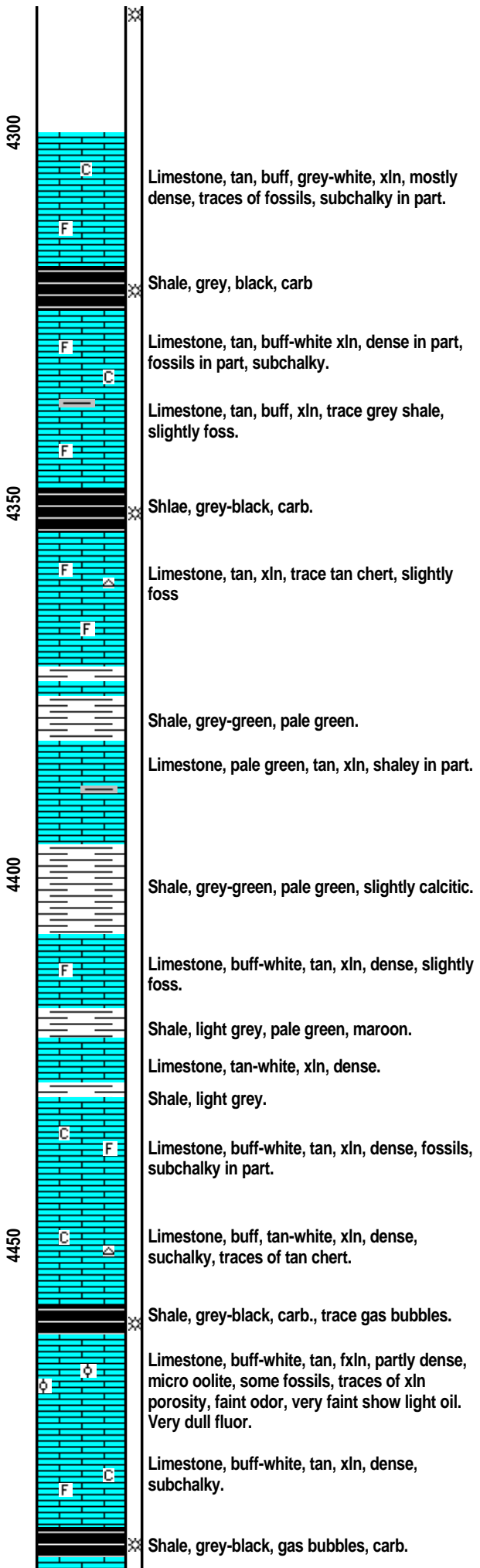
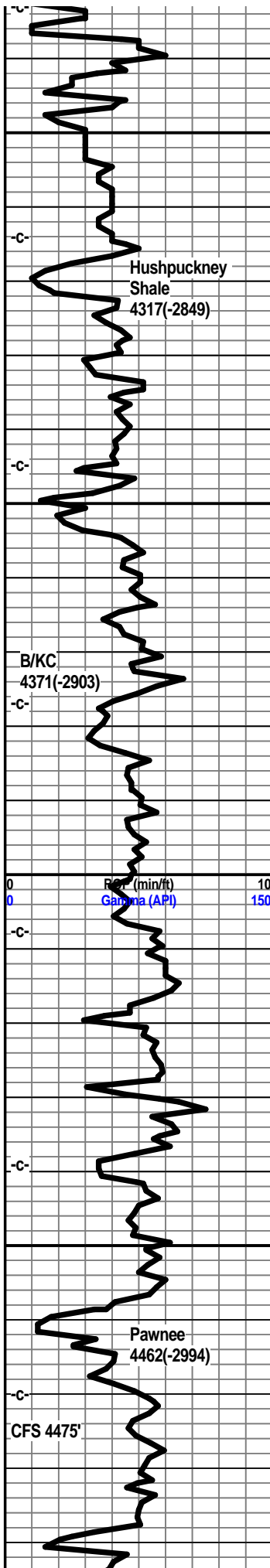
4000

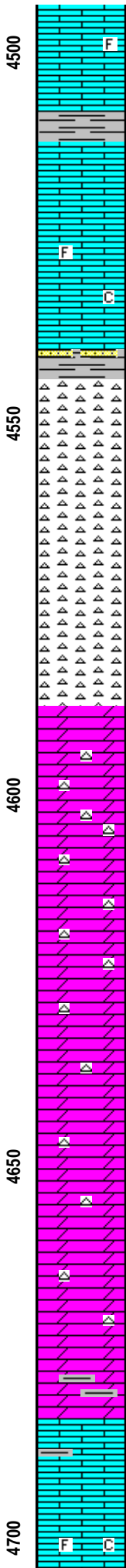
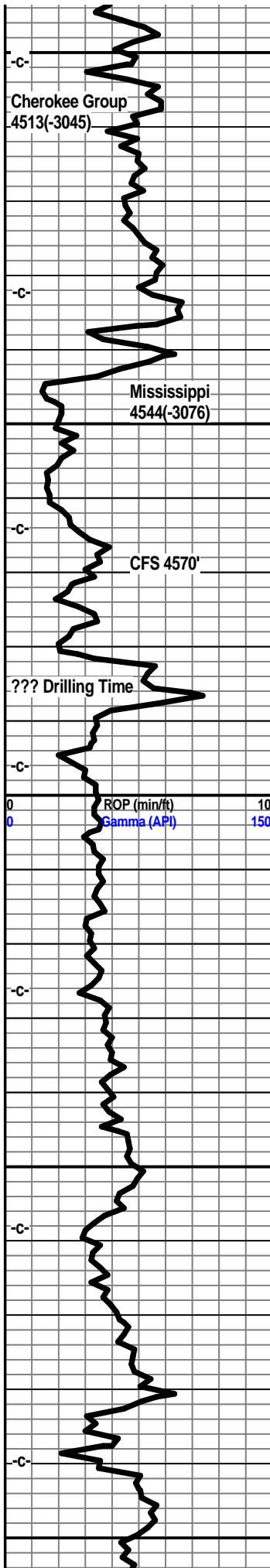
4050

ROP (min/ft)	10
Gamma (API)	150









Limestone, tan, grey-white, fxl, dense, trace foss, shaley in part.

Shale, grey, light grey.

Limestone, tan, grey-white, xln, dense.

Limestone, grey-white, buff, xln, dense in part, subchalky, trace foss.

Shale, light grey, sandy, trace grey-white sand clusters, questionable stain.

Chert, white to tan-white, weathered, scattered vugs, traces of pin point porosity, good show of free oil, good gassy odor, scattered dull fluor.

Chert, off-white, tan, weathered, increasing amounts of fresh sharp chert, scattered pin point porosity, trace of small vugs, p-f show free oil, p-f gassy odor, scattered dull fluor.

Chert, white, off-white, tan, mostly sharp fresh chert, some weathered, traces of pin point porosity, faint to poor odor, slight show free oil, very dull scattered fluor.

Chert, tan-white, off-white, some weathered, mostly fresh, traces of pin point porosity, faint odor, slight show oil, scattered staining, slightly dolo in part.

Dolo, tan-white, buff, xln, dense, weathered cherts, faint odor, scattered light staining, poor show oil, scattered fresh chert.

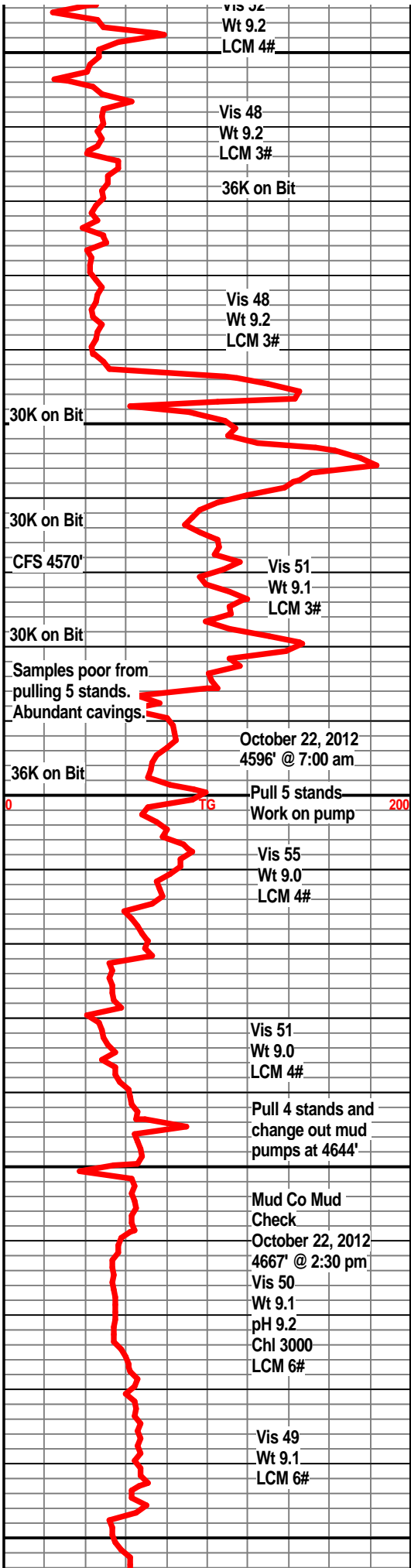
Dolo, tan, tan-white, xln, dense, tan to off-white cherts, weathered to sharp, trace of pin point porosity, trace show light oil, scattered light staining, very faint odor.

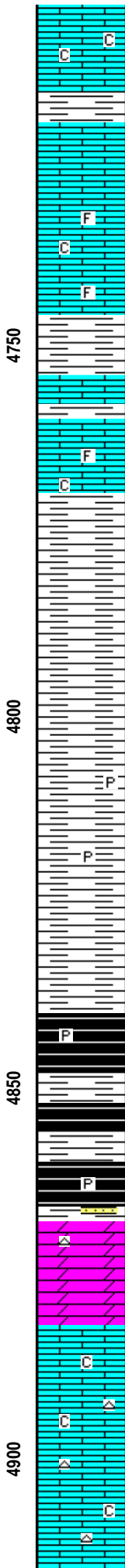
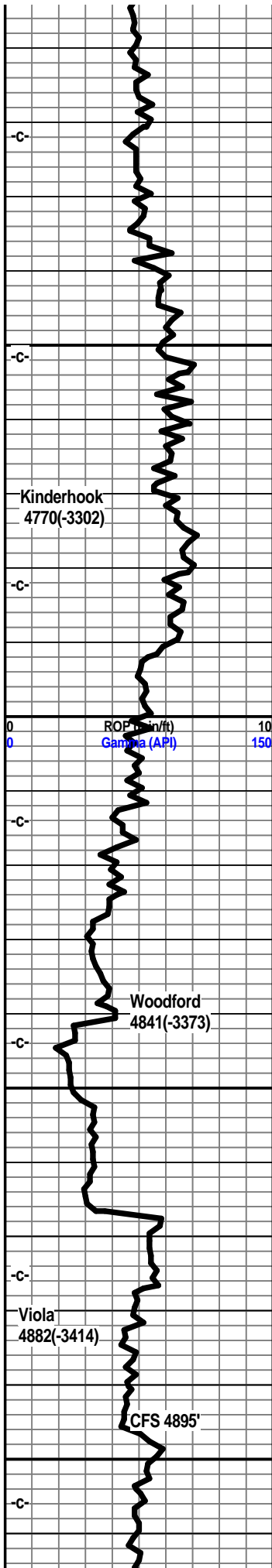
Dolo, tan, grey-white, xln, dense, traces weathered to sharp cherts, some trace pin point porosity, traces scattered light brown staining, traces grey shales.

Dolo, grey-white, tan, xln, dense, scattered weathered and fresh sharp cherts, some pin point porosity, traces of light brown staining, grey-green splintery shales.

Dolo, grey-white, xln, dense, as above.

Limestone, cream, tan-white, xln, dense, trace fossils, chalky in part, traces of green shales.





Shale, grey-green, splintery.

Limestone, buff-white, grey-white, xln, dense, subchalky, trace fossils.

Limestone, cream, buff-white, xln, dense, chalky, trace fossils, traces of white chert.

Shale, light grey to grey, silty, ls frags.

Shale, grey, dark grey, silty.

Shale, dark grey, grey, silty.

Shale, dark grey, grey, traces of pyrite.

Shale, grey-black, coffee brown, gas bubbles.

Shale, grey-black, carb.

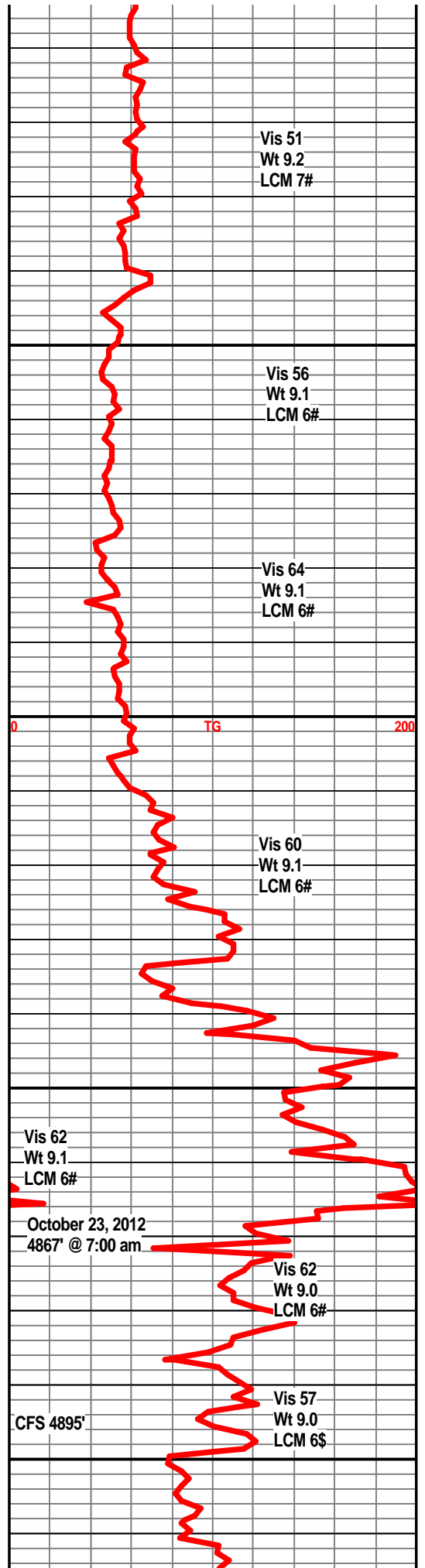
Shale, grey, coffee-brown, grey-black, carb, gas bubbles.

Dolo, grey-white, xln, silty, trace of white chert, some shaley pyritic sand clusters on top, no visible shows.

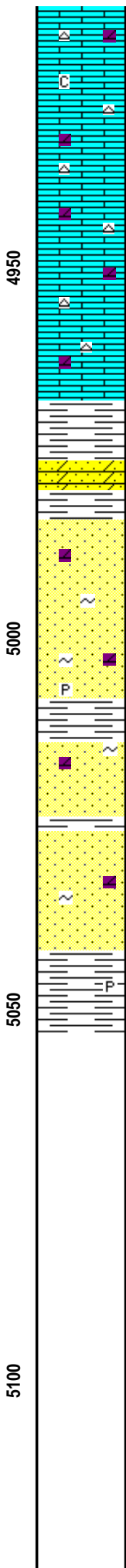
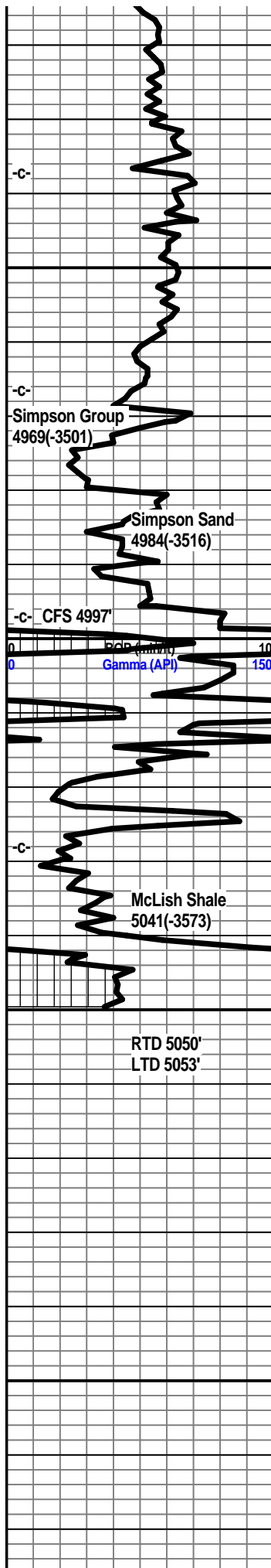
Limestone, cream-white, white, xln, slightly dolo, some xln porosity, trace chert, chalky in part, no visible shows.

Limestone, cream, tan-white, xln, traces of xln porosity, chalky, trace white chert, some grey-white ls, no visible shows, no odor, trace mineral fluor.

Limestone, tan-white, xln, dense, tan-white sharp cherts, slightly dolo in part.







Limestone, tan-white, tan, xln, dense, chalky in part, sharp tan cherts, no vis shows.

Limestone, tan, tan-white, xln, grainy texture, sharp tan cherts, slightly dolo.

Limestone, tan, tan-white, xln, grainy, sharp tan cherts, slightly dolo.

Shale, pale green to dark green.

Sandy dolo, coarse grained, dense, well cemented, slightly shaley, no visible shows.

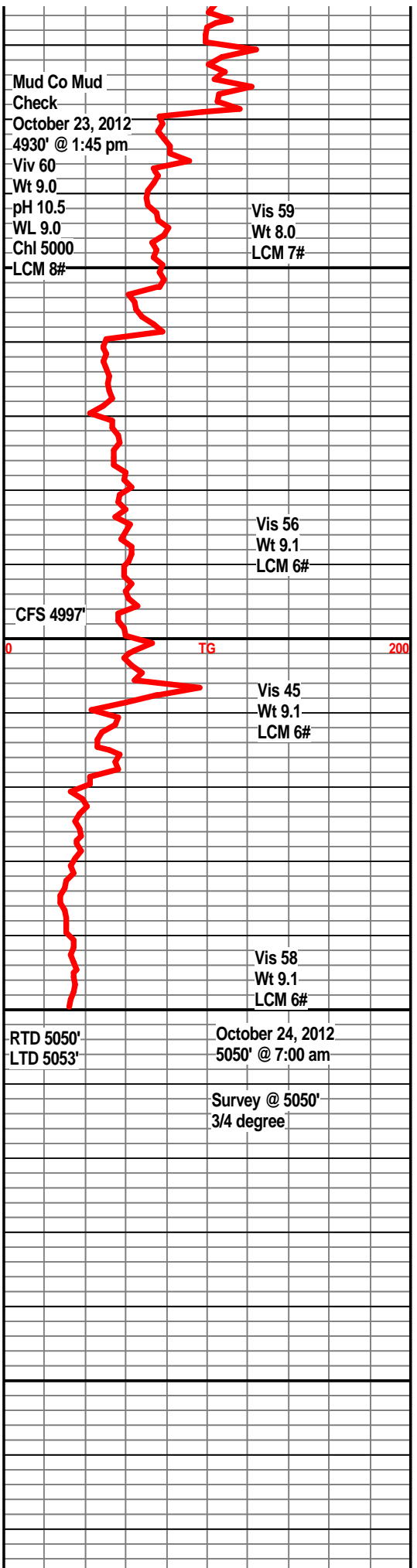
Sandstone, clear to tan-white, SA to SR, fair sorting, friable in part, slightly dolo in part, traces light brown stain, very faint show oil, no odor,

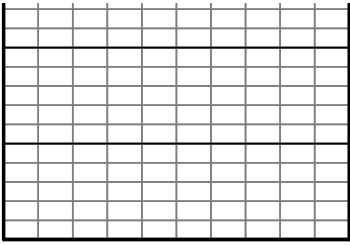
Poor Samples, - abundant shales, scattered sand clusters.

a/a, no shows.

Sandstone, clear to white frosted, fine grained, well sorted, friable, slightly dolo, glauc, no visible shows.

Shale, dark green to a teal green, massive.





50

