



James C. Musgrove

Petroleum Geologist

Office
(620) 588-4250

212 Main St. • P.O. Box 212 • Claflin, KS 67525

Home
(620) 587-3444

GEOLOGIST'S REPORT

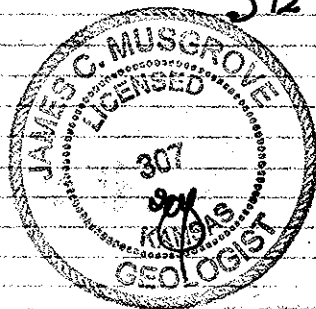
DRILLING TIME AND SAMPLE LOG

COMPANY <u>Blueridge Petroleum Corp.</u>	ELEVATIONS
LEASE <u>Schoen #1-14</u>	KB <u>2547</u>
FIELD <u>wildcat</u>	DF _____
LOCATION <u>ne-ne-sw-nw (1535' FWL 1225' FWL)</u>	GL <u>2538</u>
SEC <u>14</u> TWP <u>6^s</u> RGE <u>25^w</u>	Measurements Are All From <u>-KB-</u>
COUNTY <u>Graham</u> STATE <u>Kansas</u>	CASING
CONTRACTOR <u>Southwind Drilling (rig #2)</u>	SURFACE <u>8 5/8" 348</u>
SPUD <u>11/1/12</u> COMP <u>11/7/12</u>	PRODUCTION <u>5 1/2" 3939</u>
RTD <u>3940</u> LTD <u>3940</u>	ELECTRICAL SURVEYS
MUD UP <u>3350</u> TYPE MUD <u>Chemical displaced</u>	By <u>Nabors; Dual induction, compensated Density, Neutron, mic</u>
SAMPLES SAVED FROM <u>3400</u>	TO <u>RTD</u>
DRILLING TIME KEPT FROM <u>3400</u>	TO _____
SAMPLES EXAMINED FROM <u>3400</u>	TO _____
GEOLOGICAL SUPERVISION FROM <u>3600</u>	TO _____
GEOLOGIST ON WELL <u>Jim Musgrove</u>	

FORMATION TOPS	LOG	SAMPLES
<u>anhydrite</u>	<u>2160 +387</u>	
<u>Base anhydrite</u>	<u>2193 +354</u>	
<u>Tepeka</u>	<u>3446 -899</u>	
<u>Huebner</u>	<u>3647 -1100</u>	
<u>Tornito</u>	<u>3670 -1123</u>	
<u>Wasing</u>	<u>3687 -1140</u>	
<u>Base Kansas City</u>	<u>3877 -1330</u>	
<u>RTD</u>	<u>3940 -1393</u>	
<u>LTD</u>	<u>3940 -1393</u>	

REMARKS

7505



5 1/2" production casing was set & cemented on the Schoen # 1-K

Respectfully Submitted,
James C. Musgrove
Petrochem Geologist

LOG 7702

LEGEND



LITHOLOGY

DEPTH

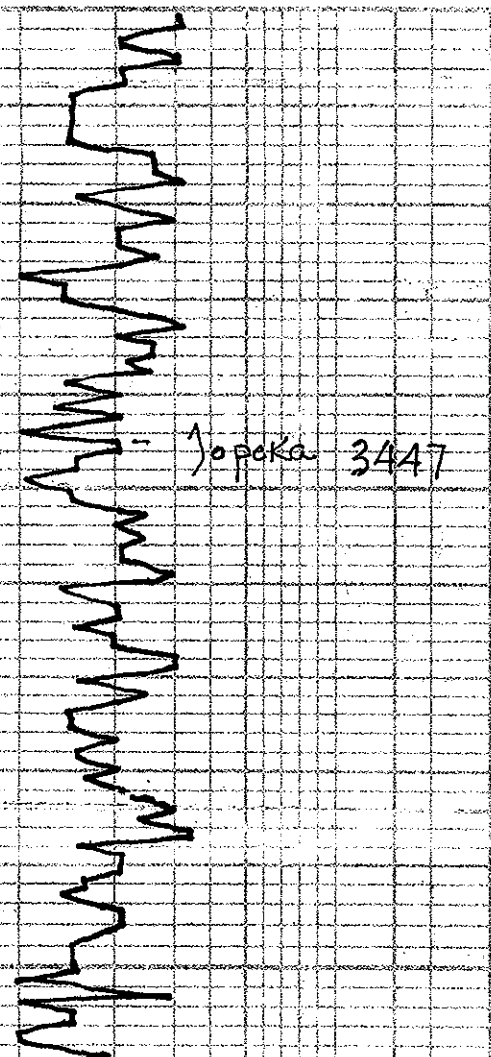
DRILLING TIME
(Logarithmic Scale)

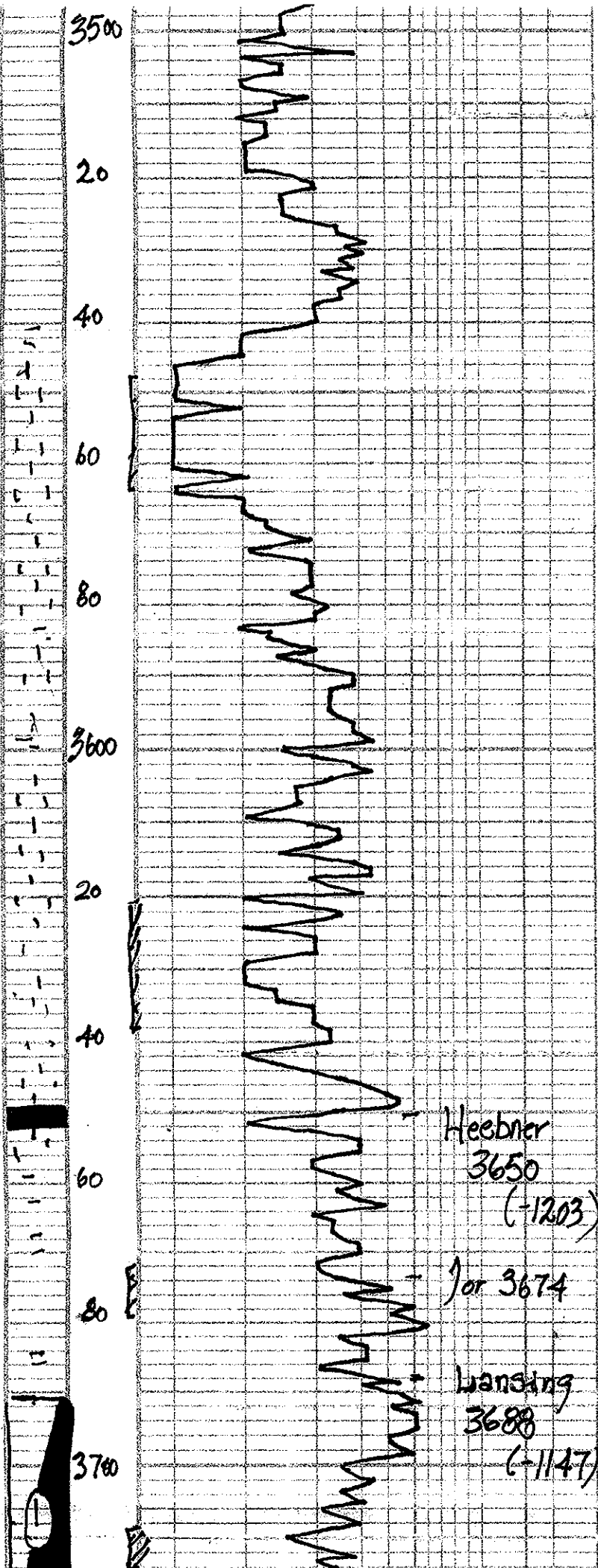
5 10 15 20 30

SAMPLE DESCRIPTIONS

REMARKS

20
40
60
80
3500





2527 KB-

ls, gray; wh med. v. h. foss
Cherty in part, 25)

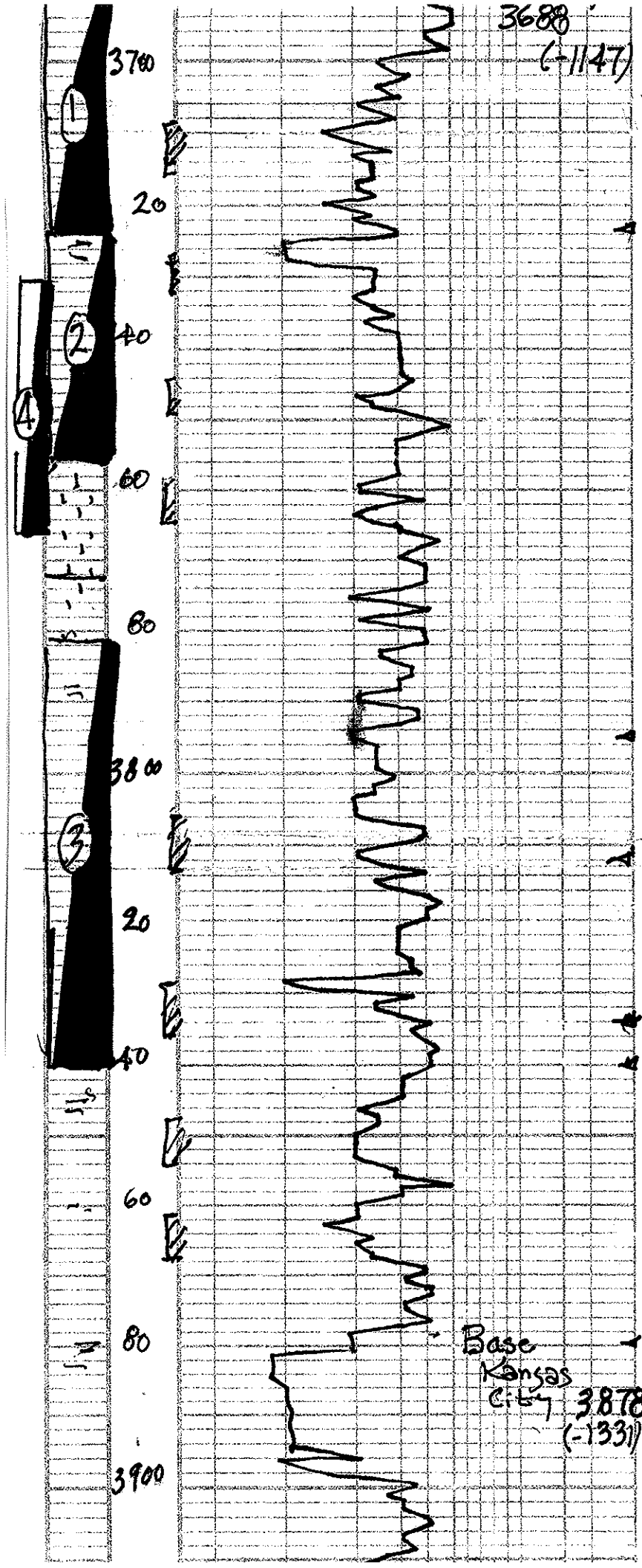
~ Jr. blk carb sh

ls, wh/gy, highly foss
few dolomite, sh. &
inclusions; 25

ls, wh/gy, slightly foss
cherty, Jr. brown. blk. sh.,
sf, no odor.

~ ls, var. cherty, Jr. brown

Dst # 1 3691-:
30-30-45-60
Blow strong (DOB)
2nd strong



3688
(-1147)

LS, wh/gy, slightly foss
chky, brown. blk. sbn,
sfg, no odor.

LS, wh, chky, Jr. brown
sbn, wh. sfg, ??? odor

LS, crm, fsh, foss, chky
Jr. sbn, wh. sfg, no odor

??

LS, wh/gy, ool, chky,
Jr. brown sbn, no sfg
??? odor

LS, wh/crm, fsh, chky
fgm/wh Δ

LS, wh, fsh, few d'g,
sct. waggly d. brown
sbn sfg, ??? odor

??

LS, wh, suboom, few ool,
chky, brown- blk. sbn
Jr. fg, no odor

LS, crm, wh, few foss
chky, sct d'g/m/s

fgm/man sh

LS, wh/crm, fsh, ool/foss

Base
Kansas
City 3878
(-1331)

Dst #1 3691-E
30-30-45-60
Blow strong (808)
2nd string opening (808 2)
Rec; 45' muddy
wat
Pressures; Isip 117
FsiP 115
I fP 94-
FSP 166-
HSH
1858-18

Dst #2
3724-37
30-30-30-30
Blow weak
Rec; 30' mud
Pressures; Isip 10
FsiP 91
I fP 55-
FSP 56-
HSH
1957-

Dst #3 3781-
30-30-30-45
Blow weak
Rec; 6' mud
Pressures; Isip 60
FsiP 806
I fP 57-
FSP 58-
HSH
1971-

Dst #4 3730
(Straddle test)
30-45-45-60
Blow; weak (2
2nd opening; weak (1'
Rec; 1' clean oil
45' oil cut m
(1570 oil) 8590 m

pressures
ISIP 125
SSIP 1247
IHP 43
STP 53
HSH

