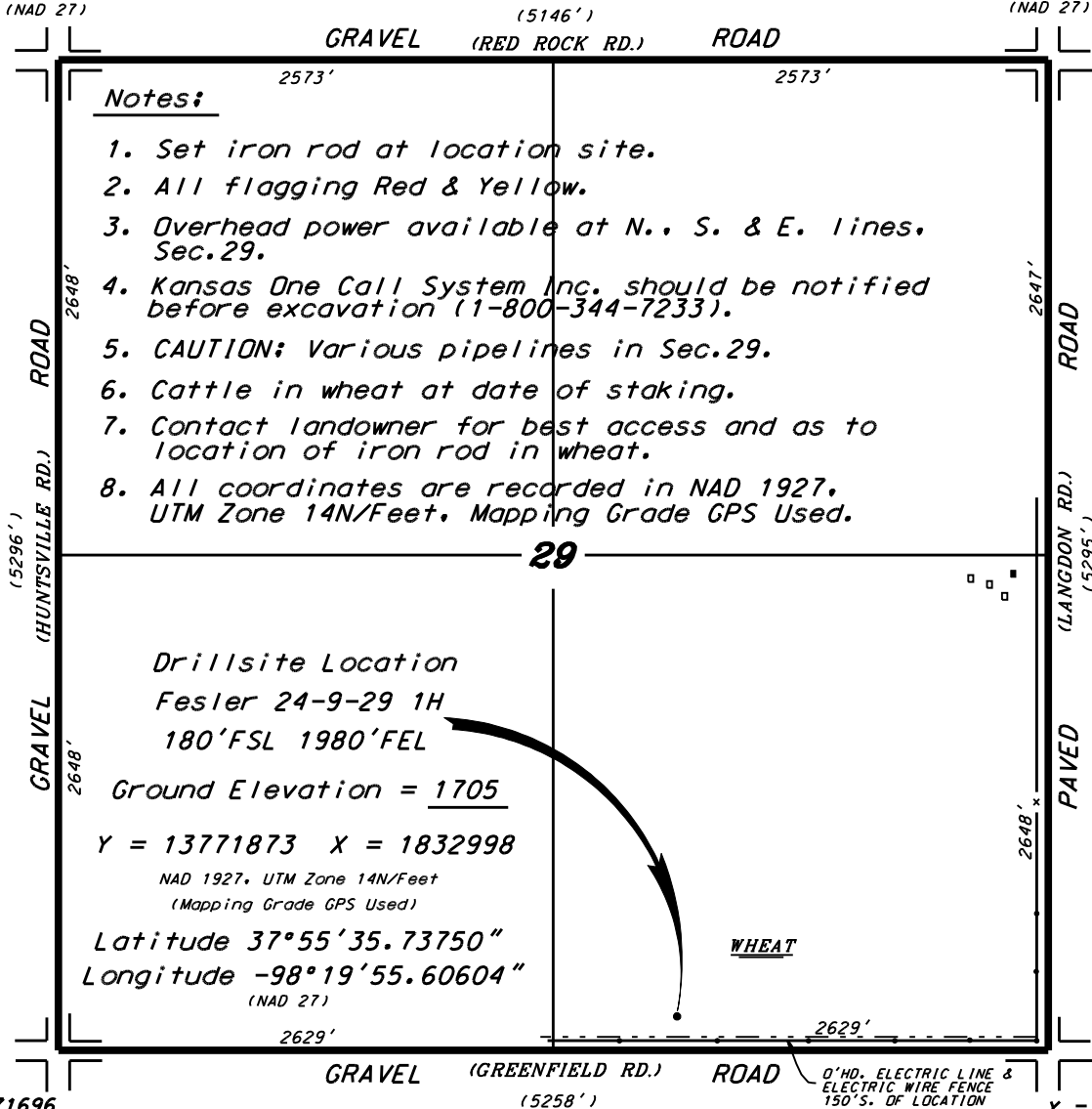


**DORADO E & P PARTNERS, LLC
FESLER LEASE
SE.1/4, SECTION 29, T24S, R9W
RENO COUNTY, KANSAS**

Y = 13776990
X = 1829761
Latitude 37°56'26.56854"
Longitude -98°20'35.56778"
(NAD 27)

Y = 13777024
X = 1834905
Latitude 37°56'26.54600"
Longitude -98°19'31.33080"
(NAD 27)



Notes:

1. Set iron rod at location site.
2. All flagging Red & Yellow.
3. Overhead power available at N., S. & E. lines, Sec.29.
4. Kansas One Call System Inc. should be notified before excavation (1-800-344-7233).
5. CAUTION: Various pipelines in Sec.29.
6. Cattle in wheat at date of staking.
7. Contact landowner for best access and as to location of iron rod in wheat.
8. All coordinates are recorded in NAD 1927, UTM Zone 14N/Feet, Mapping Grade GPS Used.

Drillsite Location
Fesler 24-9-29 1H
180' FSL 1980' FEL
Ground Elevation = 1705
Y = 13771873 X = 1832998
NAD 1927, UTM Zone 14N/Feet
(Mapping Grade GPS Used)
Latitude 37°55'35.73750"
Longitude -98°19'55.60604"
(NAD 27)

*Ingress and egress to location as shown on this plat is for public use only and may not be legally opened for public use. Contact landowner, tenant and county road department for access.

Y = 13771696
X = 1829719
Latitude 37°55'34.21934"
Longitude -98°20'36.56098"
(NAD 27)

Y = 13771731
X = 1834979
Latitude 37°55'34.19324"
Longitude -98°19'30.88562"
(NAD 27)

*Controlling data is based upon the best maps and photographs available to us and upon a regular section of land containing 640 acres.
*Approximate section lines were determined using the normal standard of care of oilfield surveyors practicing in the state of Kansas. The section corners, which establish the precise section lines, were not necessarily located, and the exact location of the drillsite location in the section is not guaranteed. Therefore, the operator securing this service and accepting this plat and all other parties relying thereon agree to hold Central Kansas Oilfield Services, Inc., its officers and employees harmless from all losses, costs and expenses and said entities released from any liability from incidental or consequential damages.
*Elevations derived from National Geodetic Vertical Datum.

Date February 13, 2013