



DRILL STEM TEST REPORT

Prepared For: **Downing Nelson Oil**

PO Box 1019
Hays KS 67601

ATTN: Ron Nelson

Erleka #2

14-14s-21w Trego KS

Start Date: 2013.01.27 @ 15:07:00

End Date: 2013.01.27 @ 22:34:09

Job Ticket #: 51582 DST #: 1

Trilobite Testing, Inc
PO Box 362 Hays, KS 67601
ph: 785-625-4778 fax: 785-625-5620

Printed: 2013.02.01 @ 10:46:41

Downing Nelson Oil
14-14s-21w Trego KS
Erleka #2
DST # 1
KC "C-D"
2013.01.27



**TRILOBITE
TESTING, INC.**

DRILL STEM TEST REPORT

Downing Nelson Oil
PO Box 1019
Hays KS 67601
ATTN: Ron Nelson

14-14s-21w Trego KS
Erleka #2
Job Ticket: 51582 **DST#: 1**
Test Start: 2013.01.27 @ 15:07:00

GENERAL INFORMATION:

Formation: **KC "C-D"**
Deviated: No Whipstock: ft (KB)
Time Tool Opened: 17:37:10
Time Test Ended: 22:34:09
Interval: **3600.00 ft (KB) To 3650.00 ft (KB) (TVD)**
Total Depth: 3650.00 ft (KB) (TVD)
Hole Diameter: 7.88 inches Hole Condition: Fair
Test Type: Conventional Bottom Hole (Initial)
Tester: Cody Bloedorn
Unit No: 41
Reference Elevations: 2233.00 ft (KB)
2228.00 ft (CF)
KB to GR/CF: 5.00 ft

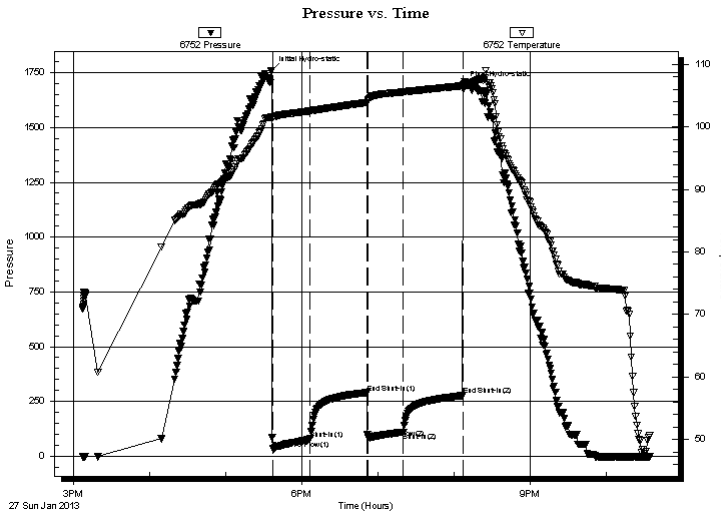
Serial #: 6752

Inside

Press @ Run Depth: 111.04 psig @ 3637.00 ft (KB) Capacity: 8000.00 psig
Start Date: 2013.01.27 End Date: 2013.01.27 Last Calib.: 2013.01.27
Start Time: 15:07:01 End Time: 22:34:10 Time On Btm: 2013.01.27 @ 17:36:00
Time Off Btm: 2013.01.27 @ 20:06:50

TEST COMMENT: 30 - IF- B.O.B. instantly
45 - IS- 3" return
30 - FF- B.O.B. in 2 Minutes
45 - FS- 1 3/4" return

PRESSURE SUMMARY



Time (Min.)	Pressure (psig)	Temp (deg F)	Annotation
0	1758.47	101.55	Initial Hydro-static
2	33.98	101.58	Open To Flow (1)
31	77.20	102.55	Shut-In(1)
75	288.66	103.92	End Shut-In(1)
76	84.59	104.23	Open To Flow (2)
104	111.04	105.59	Shut-In(2)
151	276.43	106.60	End Shut-In(2)
151	1689.17	106.79	Final Hydro-static

Recovery

Length (ft)	Description	Volume (bbl)
124.00	GSOCWM, 5%G, 5%O, 20%W, 70%M	1.74
93.00	GO, 20%G, 80%O	1.30

Gas Rates

Choke (inches)	Pressure (psig)	Gas Rate (Mcf/d)



TRILOBITE TESTING, INC.

DRILL STEM TEST REPORT

Dow ning Nelson Oil
 PO Box 1019
 Hays KS 67601
 ATTN: Ron Nelson

14-14s-21w Trego KS

Erleka #2

Job Ticket: 51582

DST#: 1

Test Start: 2013.01.27 @ 15:07:00

GENERAL INFORMATION:

Formation: **KC "C-D"**
 Deviated: No Whipstock: ft (KB)
 Time Tool Opened: 17:37:10
 Time Test Ended: 22:34:09

Test Type: Conventional Bottom Hole (Initial)
 Tester: Cody Bloedorn
 Unit No: 41

Interval: **3600.00 ft (KB) To 3650.00 ft (KB) (TVD)**
 Total Depth: 3650.00 ft (KB) (TVD)
 Hole Diameter: 7.88 inches Hole Condition: Fair

Reference Elevations: 2233.00 ft (KB)
 2228.00 ft (CF)
 KB to GR/CF: 5.00 ft

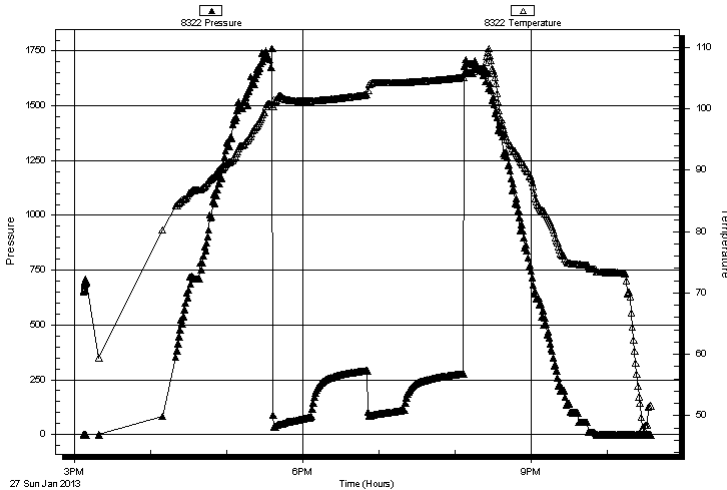
Serial #: 8322 Outside

Press @ Run Depth: psig @ 3637.00 ft (KB)
 Start Date: 2013.01.27 End Date: 2013.01.27
 Start Time: 15:07:01 End Time: 22:34:10

Capacity: 8000.00 psig
 Last Calib.: 2013.01.27
 Time On Btm:
 Time Off Btm:

TEST COMMENT: 30 - IF- B.O.B. instantly
 45 - IS- 3" return
 30 - FF- B.O.B. in 2 Minutes
 45 - FS- 1 3/4" return

Pressure vs. Time



PRESSURE SUMMARY

Time (Min.)	Pressure (psig)	Temp (deg F)	Annotation

Recovery

Length (ft)	Description	Volume (bbl)
124.00	GSOCWM, 5%G, 5%O, 20%W, 70%M	1.74
93.00	GO, 20%G, 80%O	1.30

Gas Rates

Choke (inches)	Pressure (psig)	Gas Rate (Mcf/d)



**TRILOBITE
TESTING, INC.**

DRILL STEM TEST REPORT

TOOL DIAGRAM

Downing Nelson Oil

14-14s-21w Trego KS

PO Box 1019
Hays KS 67601

Erleka #2

Job Ticket: 51582

DST#: 1

ATTN: Ron Nelson

Test Start: 2013.01.27 @ 15:07:00

Tool Information

Drill Pipe:	Length: 3612.00 ft	Diameter: 3.80 inches	Volume: 50.67 bbl	Tool Weight: 2000.00 lb
Heavy Wt. Pipe:	Length: 0.00 ft	Diameter: 0.00 inches	Volume: 0.00 bbl	Weight set on Packer: 30000.00 lb
Drill Collar:	Length: 0.00 ft	Diameter: 2.25 inches	Volume: 0.00 bbl	Weight to Pull Loose: 60000.00 lb
			<u>Total Volume: 50.67 bbl</u>	Tool Chased 0.00 ft
Drill Pipe Above KB:	33.00 ft			String Weight: Initial 53000.00 lb
Depth to Top Packer:	3600.00 ft			Final 55000.00 lb
Depth to Bottom Packer:	ft			
Interval between Packers:	50.00 ft			
Tool Length:	71.00 ft			
Number of Packers:	2	Diameter: 6.75 inches		

Tool Comments:

Tool Description

Tool Description	Length (ft)	Serial No.	Position	Depth (ft)	Accum. Lengths
Change Over Sub	1.00			3580.00	
Shut In Tool	5.00			3585.00	
Hydraulic tool	5.00			3590.00	
Packer	5.00			3595.00	21.00 Bottom Of Top Packer
Packer	5.00			3600.00	
Stubb	1.00			3601.00	
Perforations	3.00			3604.00	
Change Over Sub	1.00			3605.00	
Perforations	31.00			3636.00	
Change Over Sub	1.00			3637.00	
Recorder	0.00	6752	Inside	3637.00	
Recorder	0.00	8322	Outside	3637.00	
Perforations	10.00			3647.00	
Bullnose	3.00			3650.00	50.00 Bottom Packers & Anchor

Total Tool Length: 71.00



TRILOBITE
TESTING, INC.

DRILL STEM TEST REPORT

FLUID SUMMARY

Downing Nelson Oil

14-14s-21w Trego KS

PO Box 1019
Hays KS 67601

Erleka #2

Job Ticket: 51582

DST#: 1

ATTN: Ron Nelson

Test Start: 2013.01.27 @ 15:07:00

Mud and Cushion Information

Mud Type: Gel Chem

Cushion Type:

Oil API:

deg API

Mud Weight: 9.00 lb/gal

Cushion Length:

ft

Water Salinity:

ppm

Viscosity: 53.00 sec/qt

Cushion Volume:

bbbl

Water Loss: 8.78 in³

Gas Cushion Type:

Resistivity: ohm.m

Gas Cushion Pressure:

psig

Salinity: 2000.00 ppm

Filter Cake: inches

Recovery Information

Recovery Table

Length ft	Description	Volume bbl
124.00	GSOCWM, 5%G, 5%O, 20%W, 70%M	1.739
93.00	GO, 20%G, 80%O	1.305

Total Length: 217.00 ft Total Volume: 3.044 bbl

Num Fluid Samples: 0

Num Gas Bombs: 0

Serial #:

Laboratory Name:

Laboratory Location:

Recovery Comments:

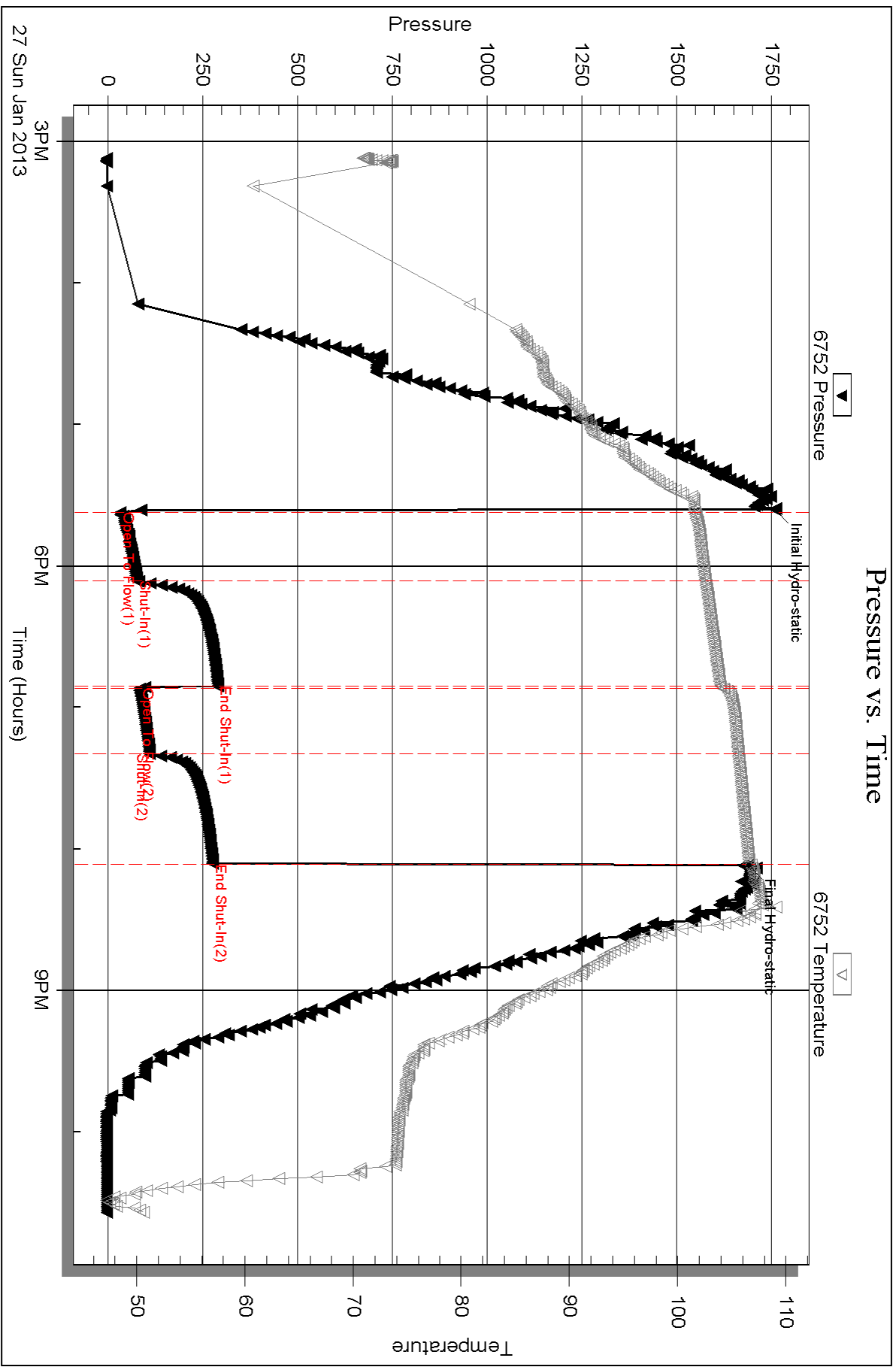
Serial #: 6752

Inside

Downing Nelson Oil

Eleka #2

DST Test Number: 1



Triobite Testing, Inc

Ref. No: 51582

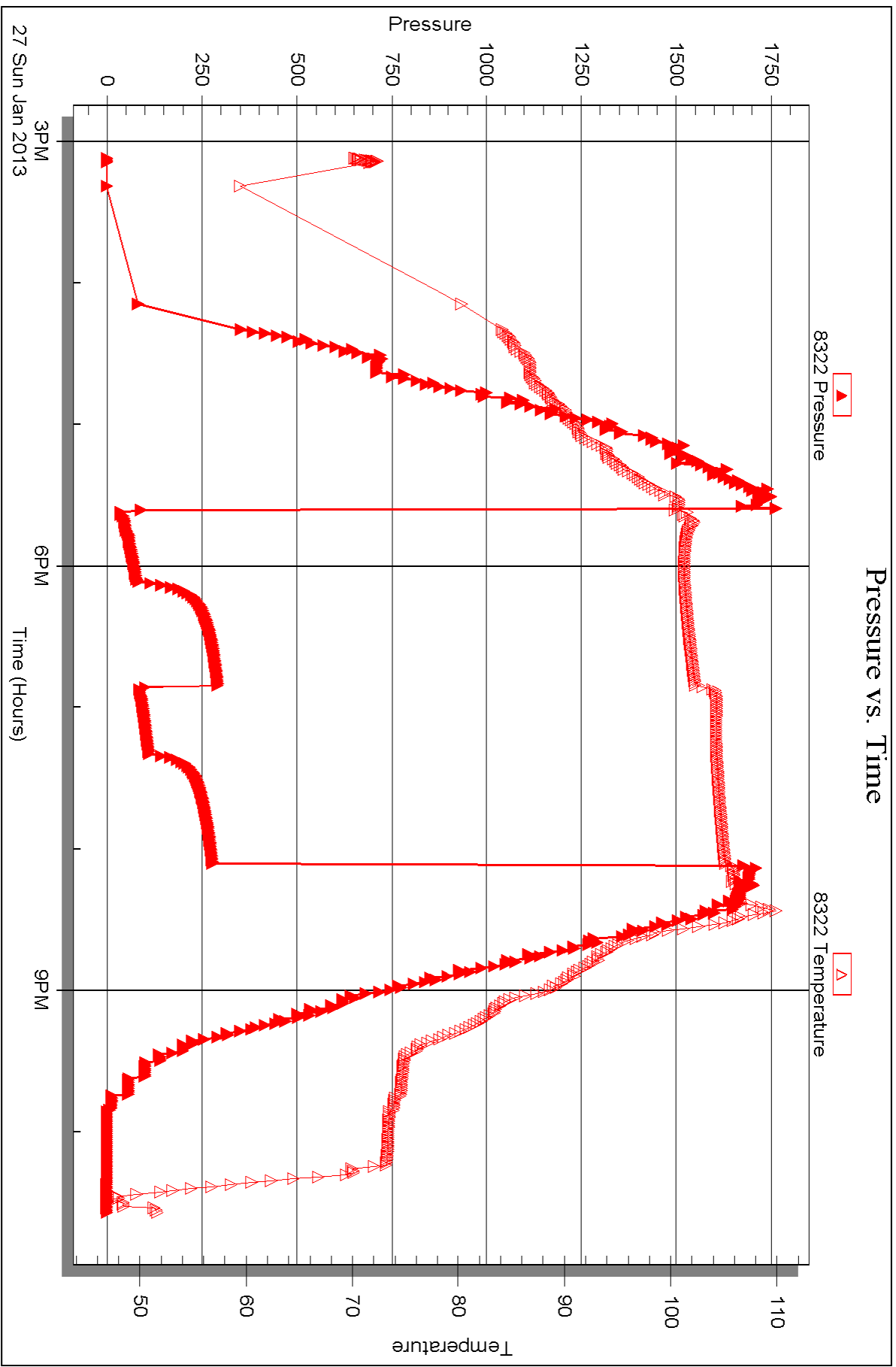
Printed: 2013.02.01 @ 10:46:44

Serial #: 8322

Outside Downing Nelson Oil

Eleka #2

DST Test Number: 1





DRILL STEM TEST REPORT

Prepared For: **Downing Nelson Oil**

PO Box 1019
Hays KS 67601

ATTN: Ron Nelson

Erleka #2

14-14s-21w Trego KS

Start Date: 2013.01.28 @ 22:45:00

End Date: 2013.01.29 @ 05:52:20

Job Ticket #: 51583 DST #: 2

Trilobite Testing, Inc
PO Box 362 Hays, KS 67601
ph: 785-625-4778 fax: 785-625-5620

Printed: 2013.02.01 @ 10:36:14



**TRILOBITE
TESTING, INC.**

DRILL STEM TEST REPORT

Downing Nelson Oil
PO Box 1019
Hays KS 67601
ATTN: Ron Nelson

14-14s-21w Trego KS
Erleka #2
Job Ticket: 51583 **DST#: 2**
Test Start: 2013.01.28 @ 22:45:00

GENERAL INFORMATION:

Formation: **Marmaton**
Deviated: No Whipstock: ft (KB)
Time Tool Opened: 00:39:50
Time Test Ended: 05:52:20
Interval: **3907.00 ft (KB) To 3946.00 ft (KB) (TVD)**
Total Depth: 3946.00 ft (KB) (TVD)
Hole Diameter: 7.88 inches Hole Condition: Fair
Test Type: Conventional Bottom Hole (Reset)
Tester: Cody Bloedorn
Unit No: 41
Reference Elevations: 2233.00 ft (KB)
2228.00 ft (CF)
KB to GR/CF: 5.00 ft

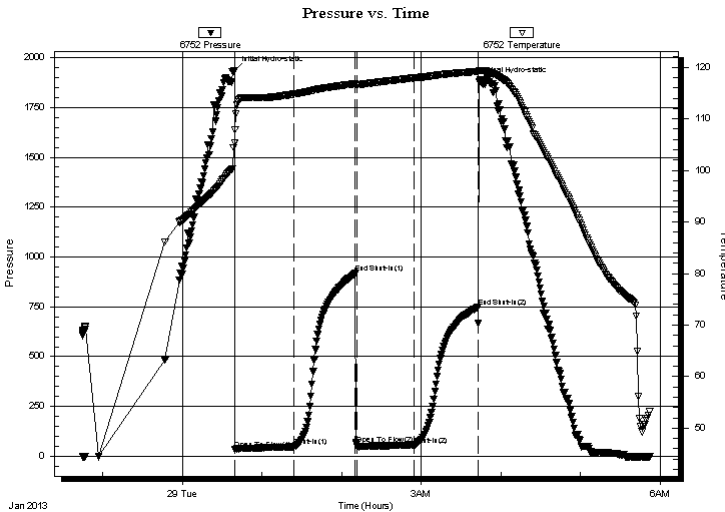
Serial #: 6752

Inside

Press @ Run Depth: 56.18 psig @ 3943.00 ft (KB) Capacity: 8000.00 psig
Start Date: 2013.01.28 End Date: 2013.01.29 Last Calib.: 2013.01.29
Start Time: 22:45:01 End Time: 05:52:20 Time On Btm: 2013.01.29 @ 00:39:30
Time Off Btm: 2013.01.29 @ 03:43:30

TEST COMMENT: 45 - IF- 3 3/4" blow
45 - IS- Surface return.
45 - FF- 1 1/4" blow
45 - FS- No return

PRESSURE SUMMARY



Time (Min.)	Pressure (psig)	Temp (deg F)	Annotation
0	1933.76	105.37	Initial Hydro-static
1	36.70	107.87	Open To Flow (1)
45	47.75	114.78	Shut-In(1)
91	917.60	116.80	End Shut-In(1)
92	59.39	116.64	Open To Flow (2)
136	56.18	117.91	Shut-In(2)
183	750.04	119.16	End Shut-In(2)
184	1879.57	119.35	Final Hydro-static

Recovery

Length (ft)	Description	Volume (bbl)
66.00	HOCM, 40%O,60%M	0.93

* Recovery from multiple tests

Gas Rates

Choke (inches)	Pressure (psig)	Gas Rate (Mcf/d)



TRILOBITE TESTING, INC.

DRILL STEM TEST REPORT

Downing Nelson Oil

14-14s-21w Trego KS

PO Box 1019
Hays KS 67601

Erleka #2

Job Ticket: 51583

DST#: 2

ATTN: Ron Nelson

Test Start: 2013.01.28 @ 22:45:00

GENERAL INFORMATION:

Formation: **Marmaton**

Deviated: No Whipstock: ft (KB)

Time Tool Opened: 00:39:50

Time Test Ended: 05:52:20

Test Type: Conventional Bottom Hole (Reset)

Tester: Cody Bloedorn

Unit No: 41

Interval: 3907.00 ft (KB) To 3946.00 ft (KB) (TVD)

Reference Elevations: 2233.00 ft (KB)

Total Depth: 3946.00 ft (KB) (TVD)

2228.00 ft (CF)

Hole Diameter: 7.88 inches Hole Condition: Fair

KB to GR/CF: 5.00 ft

Serial #: 8322 Outside

Press @ Run Depth: psig @ 3943.00 ft (KB)

Capacity: 8000.00 psig

Start Date: 2013.01.28

End Date:

2013.01.29

Last Calib.:

2013.01.29

Start Time: 22:45:01

End Time:

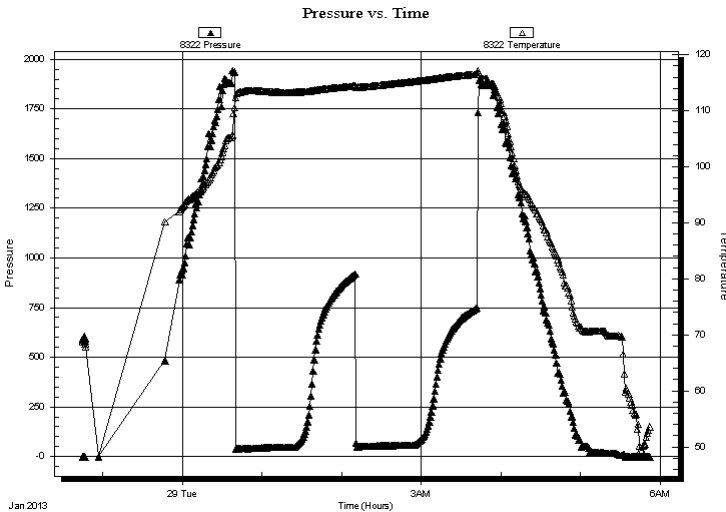
05:52:20

Time On Btm:

Time Off Btm:

TEST COMMENT: 45 - IF- 3 3/4" blow
45 - IS- Surface return.
45 - FF- 1 1/4" blow
45 - FS- No return

PRESSURE SUMMARY



Time (Min.)	Pressure (psig)	Temp (deg F)	Annotation

Recovery

Length (ft)	Description	Volume (bbl)
66.00	HOCM, 40%O,60%M	0.93

Gas Rates

Choke (inches)	Pressure (psig)	Gas Rate (Mcf/d)

* Recovery from multiple tests



**TRILOBITE
TESTING, INC.**

DRILL STEM TEST REPORT

TOOL DIAGRAM

Downing Nelson Oil

14-14s-21w Trego KS

PO Box 1019
Hays KS 67601

Erleka #2

Job Ticket: 51583

DST#: 2

ATTN: Ron Nelson

Test Start: 2013.01.28 @ 22:45:00

Tool Information

Drill Pipe:	Length: 3897.00 ft	Diameter: 3.80 inches	Volume: 54.66 bbl	Tool Weight:	2000.00 lb
Heavy Wt. Pipe:	Length: 0.00 ft	Diameter: 0.00 inches	Volume: 0.00 bbl	Weight set on Packer:	30000.00 lb
Drill Collar:	Length: 0.00 ft	Diameter: 2.25 inches	Volume: 0.00 bbl	Weight to Pull Loose:	60000.00 lb
			<u>Total Volume: 54.66 bbl</u>	Tool Chased	15.00 ft
Drill Pipe Above KB:	11.00 ft			String Weight: Initial	55000.00 lb
Depth to Top Packer:	3907.00 ft			Final	56000.00 lb
Depth to Bottom Packer:	ft				
Interval between Packers:	39.00 ft				
Tool Length:	60.00 ft				
Number of Packers:	2	Diameter: 6.75 inches			
Tool Comments:					

Tool Description	Length (ft)	Serial No.	Position	Depth (ft)	Accum. Lengths
------------------	-------------	------------	----------	------------	----------------

Change Over Sub	1.00			3887.00	
Shut In Tool	5.00			3892.00	
Hydraulic tool	5.00			3897.00	
Packer	5.00			3902.00	21.00 Bottom Of Top Packer
Packer	5.00			3907.00	
Stubb	1.00			3908.00	
Perforations	2.00			3910.00	
Change Over Sub	1.00			3911.00	
Perforations	31.00			3942.00	
Change Over Sub	1.00			3943.00	
Recorder	0.00	6752	Inside	3943.00	
Recorder	0.00	8322	Outside	3943.00	
Bullnose	3.00			3946.00	39.00 Bottom Packers & Anchor

Total Tool Length: 60.00



**TRILOBITE
TESTING, INC.**

DRILL STEM TEST REPORT

FLUID SUMMARY

Downing Nelson Oil

14-14s-21w Trego KS

PO Box 1019
Hays KS 67601

Erleka #2

Job Ticket: 51583

DST#: 2

ATTN: Ron Nelson

Test Start: 2013.01.28 @ 22:45:00

Mud and Cushion Information

Mud Type: Gel Chem

Cushion Type:

Oil API:

deg API

Mud Weight: 9.00 lb/gal

Cushion Length:

ft

Water Salinity:

ppm

Viscosity: 53.00 sec/qt

Cushion Volume:

bbbl

Water Loss: 7.98 in³

Gas Cushion Type:

Resistivity: ohm.m

Gas Cushion Pressure:

psig

Salinity: 4000.00 ppm

Filter Cake: inches

Recovery Information

Recovery Table

Length ft	Description	Volume bbbl
66.00	HOCM, 40%O,60%M	0.926

Total Length: 66.00 ft Total Volume: 0.926 bbl

Num Fluid Samples: 0

Num Gas Bombs: 0

Serial #:

Laboratory Name:

Laboratory Location:

Recovery Comments:

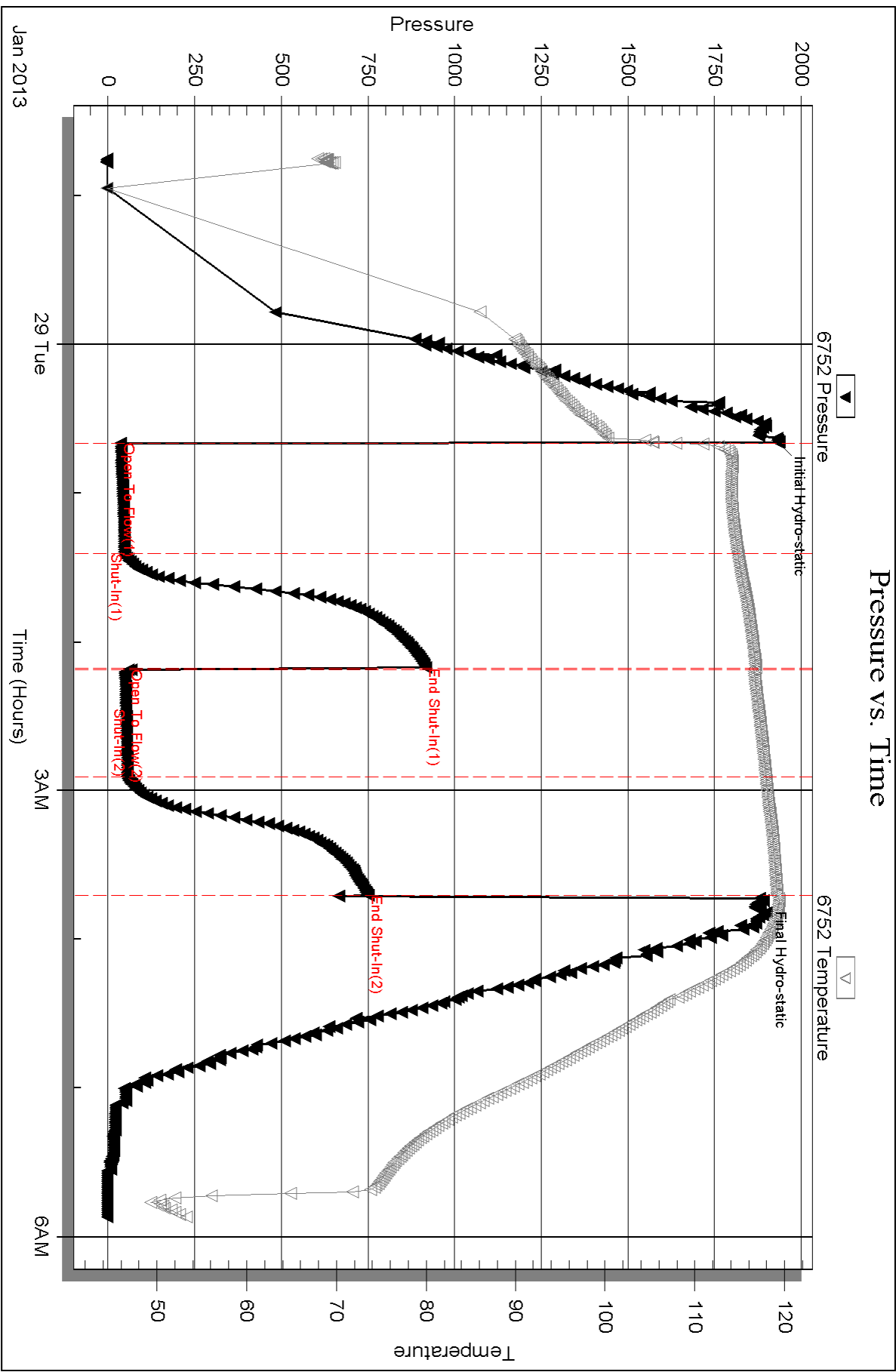
Serial #: 6752

Inside

Downing Nelson Oil

Eleka #2

DST Test Number: 2

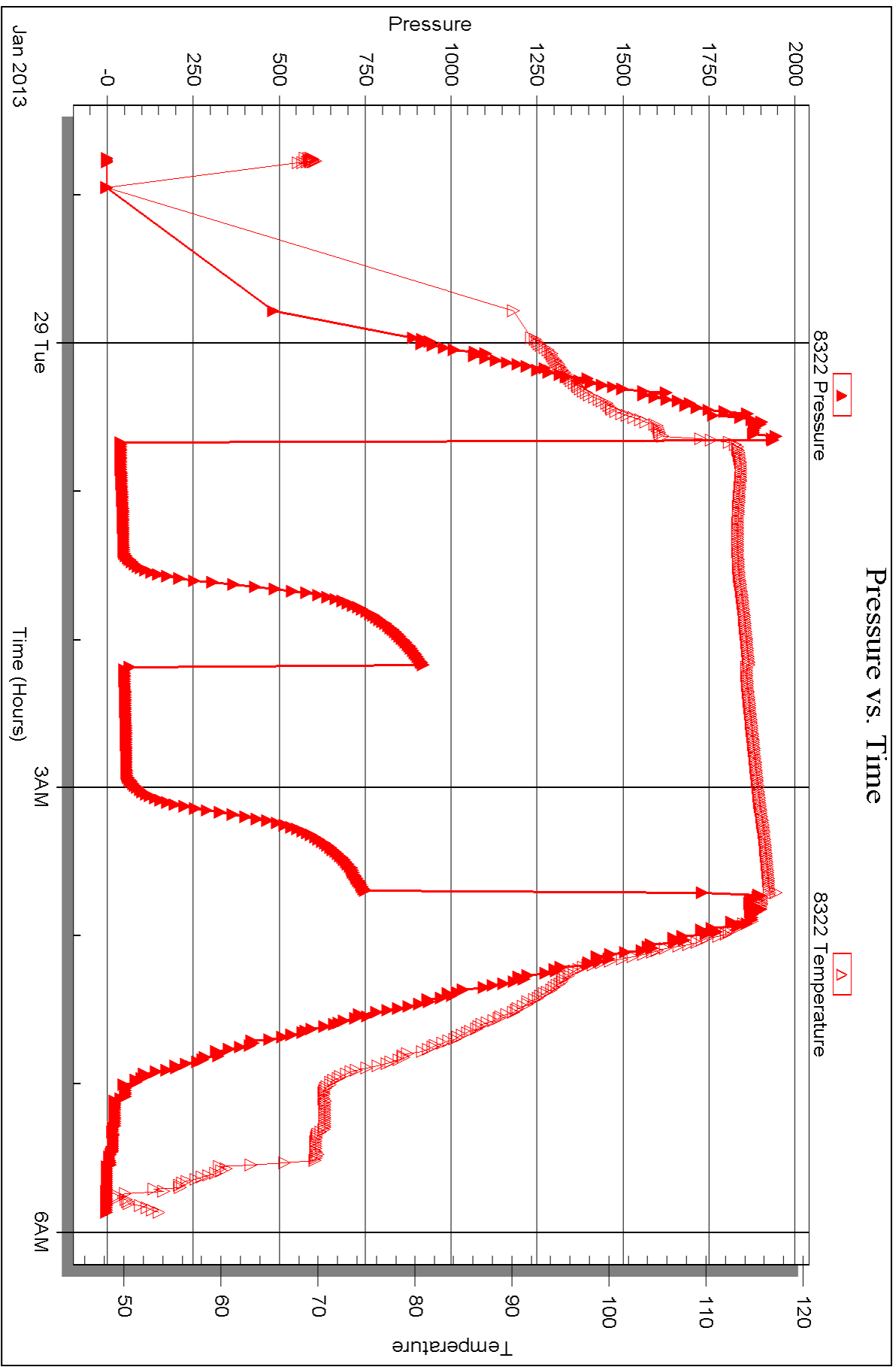


Serial #: 8322

Outside Downing Nelson Oil

Eleka #2

DST Test Number: 2





DRILL STEM TEST REPORT

Prepared For: **Downing Nelson Oil**

PO Box 1019
Hays KS 67601

ATTN: Ron Nelson

Erleka #2

14-14s-21w Trego KS

Start Date: 2013.01.29 @ 12:45:00

End Date: 2013.01.29 @ 20:08:39

Job Ticket #: 51584 DST #: 3

Trilobite Testing, Inc

PO Box 362 Hays, KS 67601

ph: 785-625-4778 fax: 785-625-5620

Printed: 2013.02.01 @ 10:34:44



TRILOBITE TESTING, INC.

DRILL STEM TEST REPORT

Downing Nelson Oil

14-14s-21w Trego KS

PO Box 1019
Hays KS 67601

Erleka #2

Job Ticket: 51584

DST#: 3

ATTN: Ron Nelson

Test Start: 2013.01.29 @ 12:45:00

GENERAL INFORMATION:

Formation: **Arbuckle**

Deviated: No Whipstock: ft (KB)

Time Tool Opened: 15:02:20

Time Test Ended: 20:08:39

Test Type: Conventional Bottom Hole (Reset)

Tester: Cody Bloedorn

Unit No: 41

Interval: 3937.00 ft (KB) To 3976.00 ft (KB) (TVD)

Reference Elevations: 2233.00 ft (KB)

Total Depth: 3976.00 ft (KB) (TVD)

2228.00 ft (CF)

Hole Diameter: 7.88 inches Hole Condition: Fair

KB to GR/CF: 5.00 ft

Serial #: 6752 Inside

Press @ Run Depth: 147.56 psig @ 3973.00 ft (KB)

Capacity: 8000.00 psig

Start Date: 2013.01.29 End Date: 2013.01.29

Last Calib.: 2013.01.29

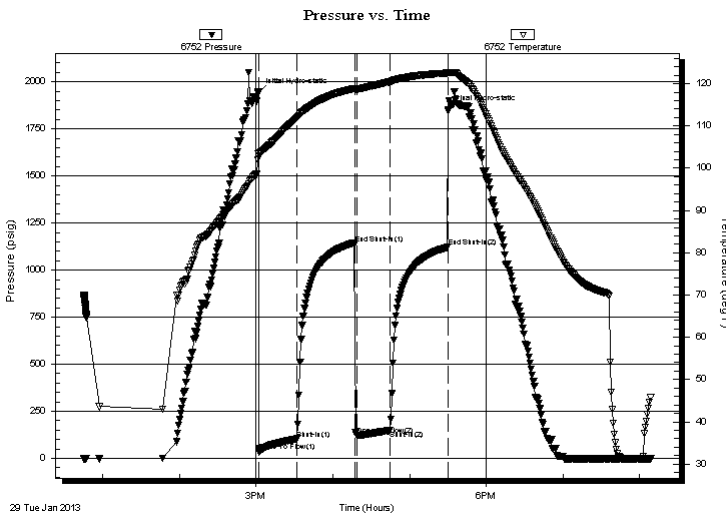
Start Time: 12:45:01 End Time: 20:08:40

Time On Btm: 2013.01.29 @ 15:01:40

Time Off Btm: 2013.01.29 @ 17:30:00

TEST COMMENT: 30 - IF- B.O.B. in 5 Minutes.
45 - IS- Surface return.
30 - FF- B.O.B. in 6 Minutes.
45 - FS- Surface return

PRESSURE SUMMARY



Time (Min.)	Pressure (psig)	Temp (deg F)	Annotation
0	1945.28	103.47	Initial Hydro-static
1	35.30	103.43	Open To Flow (1)
30	103.77	111.95	Shut-In(1)
76	1140.56	118.83	End Shut-In(1)
77	123.82	118.69	Open To Flow (2)
103	147.56	120.47	Shut-In(2)
148	1121.63	122.50	End Shut-In(2)
149	1853.60	122.64	Final Hydro-static

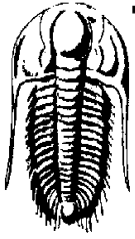
Recovery

Length (ft)	Description	Volume (bbl)
124.00	HOCM, 40%O, 60%M	1.74
186.00	GO, 20%G, 80%O	2.61
0.00	186' of G.I.P.	0.00

Gas Rates

	Choke (inches)	Pressure (psig)	Gas Rate (Mcf/d)

* Recovery from multiple tests



**TRILOBITE
TESTING, INC.**

DRILL STEM TEST REPORT

Dow ning Nelson Oil
PO Box 1019
Hays KS 67601
ATTN: Ron Nelson

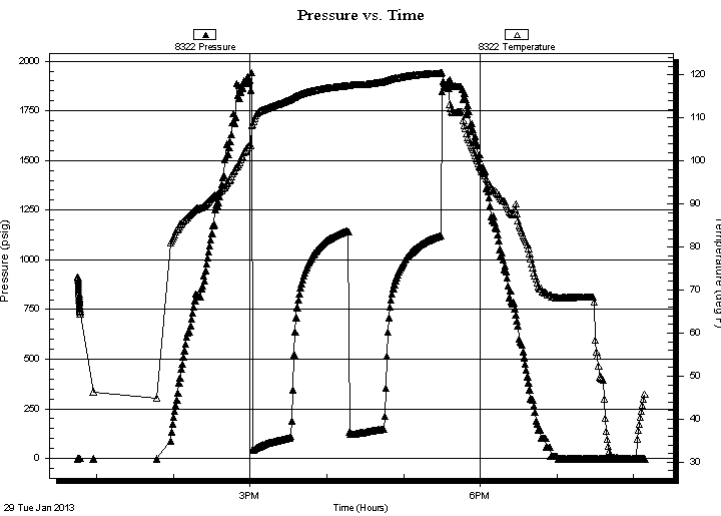
14-14s-21w Trego KS
Erleka #2
Job Ticket: 51584 **DST#: 3**
Test Start: 2013.01.29 @ 12:45:00

GENERAL INFORMATION:

Formation: **Arbuckle**
Deviated: No Whipstock: ft (KB)
Time Tool Opened: 15:02:20
Time Test Ended: 20:08:39
Interval: **3937.00 ft (KB) To 3976.00 ft (KB) (TVD)**
Total Depth: 3976.00 ft (KB) (TVD)
Hole Diameter: 7.88 inches Hole Condition: Fair
Test Type: Conventional Bottom Hole (Reset)
Tester: Cody Bloedorn
Unit No: 41
Reference Elevations: 2233.00 ft (KB)
2228.00 ft (CF)
KB to GR/CF: 5.00 ft

Serial #: 8322 Outside
Press @ Run Depth: psig @ 3973.00 ft (KB) Capacity: 8000.00 psig
Start Date: 2013.01.29 End Date: 2013.01.29 Last Calib.: 2013.01.29
Start Time: 12:45:01 End Time: 20:08:40 Time On Btm:
Time Off Btm:

TEST COMMENT: 30 - IF- B.O.B. in 5 Minutes.
45 - IS- Surface return.
30 - FF- B.O.B. in 6 Minutes.
45 - FS- Surface return



PRESSURE SUMMARY

Time (Min.)	Pressure (psig)	Temp (deg F)	Annotation

Recovery

Length (ft)	Description	Volume (bbl)
124.00	HOCM, 40%O, 60%M	1.74
186.00	GO, 20%G, 80%O	2.61
0.00	186' of G.I.P.	0.00

* Recovery from multiple tests

Gas Rates

	Choke (inches)	Pressure (psig)	Gas Rate (Mcf/d)



**TRILOBITE
TESTING, INC.**

DRILL STEM TEST REPORT

TOOL DIAGRAM

Downing Nelson Oil

14-14s-21w Trego KS

PO Box 1019
Hays KS 67601

Erleka #2

Job Ticket: 51584

DST#: 3

ATTN: Ron Nelson

Test Start: 2013.01.29 @ 12:45:00

Tool Information

Drill Pipe:	Length: 3928.00 ft	Diameter: 3.80 inches	Volume: 55.10 bbl	Tool Weight: 2000.00 lb
Heavy Wt. Pipe:	Length: 0.00 ft	Diameter: 0.00 inches	Volume: 0.00 bbl	Weight set on Packer: 30000.00 lb
Drill Collar:	Length: 0.00 ft	Diameter: 2.25 inches	Volume: 0.00 bbl	Weight to Pull Loose: 62000.00 lb
			<u>Total Volume: 55.10 bbl</u>	Tool Chased 0.00 ft
Drill Pipe Above KB:	12.00 ft			String Weight: Initial 58000.00 lb
Depth to Top Packer:	3937.00 ft			Final 58000.00 lb
Depth to Bottom Packer:	ft			
Interval between Packers:	39.00 ft			
Tool Length:	60.00 ft			
Number of Packers:	2	Diameter: 6.75 inches		

Tool Comments:

Tool Description

Tool Description	Length (ft)	Serial No.	Position	Depth (ft)	Accum. Lengths
Change Over Sub	1.00			3917.00	
Shut In Tool	5.00			3922.00	
Hydraulic tool	5.00			3927.00	
Packer	5.00			3932.00	21.00 Bottom Of Top Packer
Packer	5.00			3937.00	
Stubb	1.00			3938.00	
Perforations	2.00			3940.00	
Change Over Sub	1.00			3941.00	
Perforations	31.00			3972.00	
Change Over Sub	1.00			3973.00	
Recorder	0.00	6752	Inside	3973.00	
Recorder	0.00	8322	Outside	3973.00	
Bullnose	3.00			3976.00	39.00 Bottom Packers & Anchor

Total Tool Length: 60.00



**TRILOBITE
TESTING, INC.**

DRILL STEM TEST REPORT

FLUID SUMMARY

Downing Nelson Oil

14-14s-21w Trego KS

PO Box 1019
Hays KS 67601

Erleka #2

Job Ticket: 51584

DST#: 3

ATTN: Ron Nelson

Test Start: 2013.01.29 @ 12:45:00

Mud and Cushion Information

Mud Type: Gel Chem

Cushion Type:

Oil API:

deg API

Mud Weight: 9.00 lb/gal

Cushion Length:

ft

Water Salinity:

ppm

Viscosity: 53.00 sec/qt

Cushion Volume:

bbbl

Water Loss: 7.99 in³

Gas Cushion Type:

Resistivity: ohm.m

Gas Cushion Pressure:

psig

Salinity: 4000.00 ppm

Filter Cake: inches

Recovery Information

Recovery Table

Length ft	Description	Volume bbbl
124.00	HOCM, 40%O, 60%M	1.739
186.00	GO, 20%G, 80%O	2.609
0.00	186' of G.I.P.	0.000

Total Length: 310.00 ft Total Volume: 4.348 bbl

Num Fluid Samples: 0

Num Gas Bombs: 0

Serial #:

Laboratory Name:

Laboratory Location:

Recovery Comments: Gravity = 38

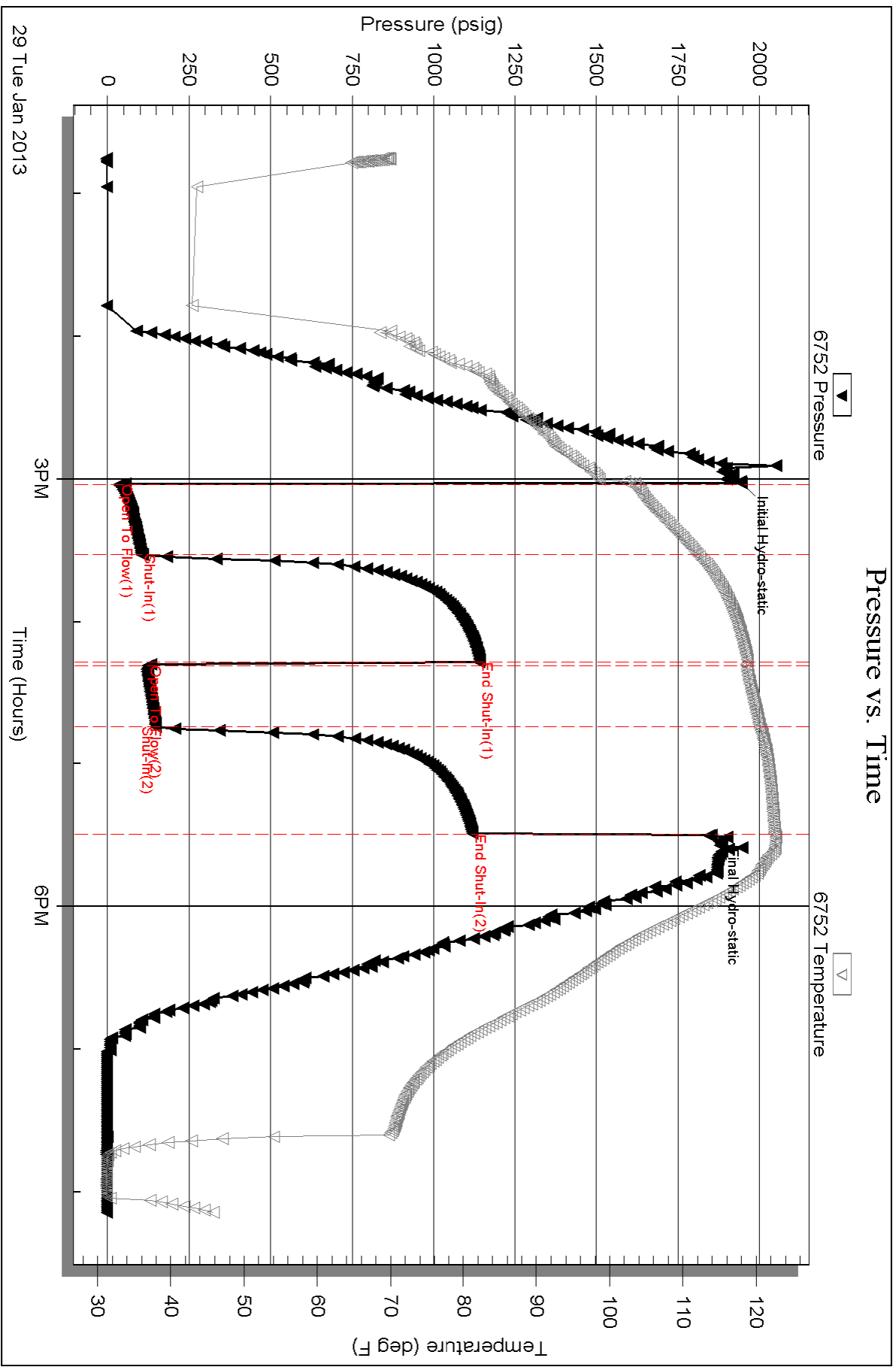
Serial #: 6752

Inside

Downing Nelson Oil

Eleka #2

DST Test Number: 3

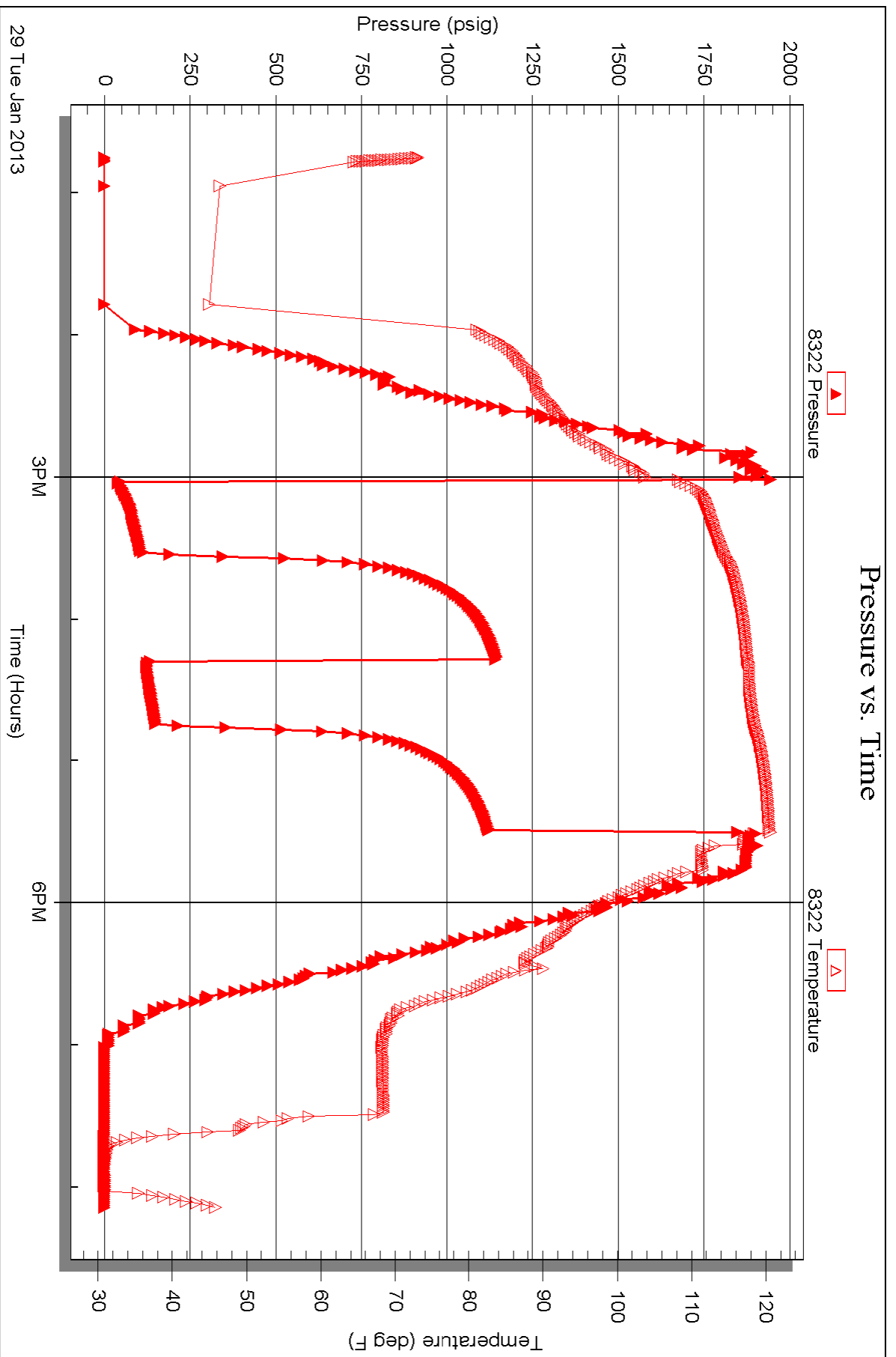


Serial #: 8322

Outside Downing Nelson Oil

Eleka #2

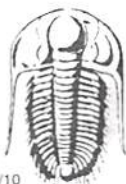
DST Test Number: 3



Triobite Testing, Inc

Ref. No: 51584

Printed: 2013.02.01 @ 10:34:47



TRILOBITE TESTING INC.

1515 Commerce Parkway • Hays, Kansas 67601

Test Ticket

NO. 51582

Well Name & No. Erleka #2 Test No. 1 Date 1-27-13
 Company Downing Nelson Oil Elevation 2233 KB 2228 GL
 Address Po Box 1019, Hays KS, 67601
 Co. Rep / Geo. Gator Rig Discovery #3
 Location: Sec. 14 Twp. 14S Rge. 21W Co. Trego State KS

Interval Tested 3600 - 3650 Zone Tested KC "C-D"
 Anchor Length 50' Drill Pipe Run 3612 Mud Wt. 8.6
 Top Packer Depth 3595 Drill Collars Run 31 Vis 53
 Bottom Packer Depth 3600 Wt. Pipe Run — WL 8.8
 Total Depth 3650 Chlorides 2,000 ppm System LCM —

Blow Description IF - B.O.B. instantly
FSI - 3 1/4" return
FF - B.O.B. in 2 Minutes
FSI - 1 3/4" return

Rec	Feet of	%gas	%oil	%water	%mud
<u>124</u>	<u>GSOCWM</u>	<u>5</u>	<u>5</u>	<u>20</u>	<u>70</u>
<u>93</u>	<u>GO</u>	<u>20</u>	<u>80</u>		
Rec	Feet of	%gas	%oil	%water	%mud
Rec	Feet of	%gas	%oil	%water	%mud
Rec	Feet of	%gas	%oil	%water	%mud

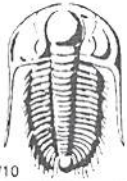
Rec Total 217' BHT 106° Gravity — API RW — @ — °F Chlorides — ppm

(A) Initial Hydrostatic 1758 Test 1150 T-On Location 105pm
 (B) First Initial Flow 33 Jars — T-Started 3:07pm
 (C) First Final Flow 77 Safety Joint — T-Open 5:36pm
 (D) Initial Shut-In 288 Circ Sub — T-Pulled 8:06pm
 (E) Second Initial Flow 84 Hourly Standby — T-Out 10:34pm
 (F) Second Final Flow 111 Mileage 60 RT 93 Comments —
 (G) Final Shut-In 276 Sampler —
 (H) Final Hydrostatic 1689 Straddle — Ruined Shale Packer —

Initial Open 30 Shale Packer — Ruined Packer —
 Initial Shut-In 45 Extra Packer — Extra Copies —
 Final Flow 30 Extra Recorder — Sub Total 0
 Final Shut-In 45 Day Standby — Total 1243
 Accessibility — MP/DST Disc't —
 Sub Total 1243

Approved By — Our Representative Cody B. Bolderson

TriLOBITE TESTING INC. shall not be liable for damaged of any kind of the property or personnel of the one for whom a test is made, or for any loss suffered or sustained, directly or indirectly, through the use of its equipment, or its statements or opinion concerning the results of any test, tools lost or damaged in the hole shall be paid for at cost by the party for whom the test is made.



TRILOBITE TESTING INC.

1515 Commerce Parkway • Hays, Kansas 67601

Test Ticket

NO. 51583

Well Name & No. Erleka #2 Test No. 2 Date 1-28-13
 Company Dawny Nelson Oil Elevation 2233 KB 2228 GL
 Address Po Box 1019, Hays KS, 67601
 Co. Rep / Geo. Gator Rig Discovery #3
 Location: Sec. 14 Twp. 14S Rge. 21W Co. Trego State KS

Interval Tested 3907-3946 Zone Tested Marmaton
 Anchor Length 39' Drill Pipe Run 3897' Mud Wt. 8.7
 Top Packer Depth 3902 Drill Collars Run — Vis 53
 Bottom Packer Depth 3907 Wt. Pipe Run — WL 8.0
 Total Depth 3946 Chlorides 4,000 ppm System LCM —
 Blow Description IF- 3 3/4" blow
ISI- Surface blow back
FF- 1 1/4" blow
FSI- No return

Rec	Feet of	%gas	%oil	%water	%mud
<u>66</u>	<u>HOCM</u>	<u>40</u>		<u>60</u>	
Rec	Feet of	%gas	%oil	%water	%mud
Rec	Feet of	%gas	%oil	%water	%mud
Rec	Feet of	%gas	%oil	%water	%mud
Rec	Feet of	%gas	%oil	%water	%mud

Rec Total 66 BHT 119° Gravity — API RW — @ — °F Chlorides — ppm

(A) Initial Hydrostatic <u>1933</u>	<input checked="" type="checkbox"/> Test <u>1150</u>	T-On Location <u>10:34pm</u>
(B) First Initial Flow <u>36</u>	<input type="checkbox"/> Jars	T-Started <u>10:45pm</u>
(C) First Final Flow <u>47</u>	<input type="checkbox"/> Safety Joint	T-Open <u>12:40am</u>
(D) Initial Shut-In <u>917</u>	<input type="checkbox"/> Circ Sub	T-Pulled <u>3:40am</u>
(E) Second Initial Flow <u>59</u>	<input type="checkbox"/> Hourly Standby	T-Out <u>5:53am</u>
(F) Second Final Flow <u>56</u>	<input checked="" type="checkbox"/> Mileage <u>60RT</u> 93	Comments
(G) Final Shut-In <u>750</u>	<input type="checkbox"/> Sampler	
(H) Final Hydrostatic <u>1879</u>	<input type="checkbox"/> Straddle	<input type="checkbox"/> Ruined Shale Packer
Initial Open <u>45</u>	<input type="checkbox"/> Shale Packer	<input type="checkbox"/> Ruined Packer
Initial Shut-In <u>45</u>	<input type="checkbox"/> Extra Packer	<input type="checkbox"/> Extra Copies
Final Flow <u>45</u>	<input type="checkbox"/> Extra Recorder	Sub Total <u>0</u>
Final Shut-In <u>45</u>	<input checked="" type="checkbox"/> Day Standby <u>over 2 hrs</u>	Total <u>1243</u>
	<input type="checkbox"/> Accessibility	MP/DST Disc't
	Sub Total <u>1243</u>	

Approved By _____ Our Representative Cody Blair

Trilobite Testing Inc. shall not be liable for damaged of any kind of the property or personnel of the one for whom a test is made, or for any loss suffered or sustained, directly or indirectly, through the use of its equipment, or its statements or opinion concerning the results of any test, tools lost or damaged in the hole shall be paid for at cost by the party for whom the test is made.



TRILOBITE TESTING INC.

1515 Commerce Parkway • Hays, Kansas 67601

Test Ticket

NO. 51584

Well Name & No. Erleka #2 Test No. 3 Date 1-29¹³
 Company Downing Nelson Oil Elevation 2233 KB 2228 GL
 Address Po Box 1019, Hays KS, 67601
 Co. Rep / Geo. Gator Rig Discovery #3
 Location: Sec. 14 Twp. 14s Rge. 21W Co. Trego State KS

Interval Tested 3937-3976 Zone Tested Arbuckle
 Anchor Length 39' Drill Pipe Run 3928' Mud Wt. 8.7
 Top Packer Depth 3932 Drill Collars Run — Vis 53
 Bottom Packer Depth 3937 Wt. Pipe Run — WL 8.0
 Total Depth 3976 Chlorides 4,000 ppm System LCM —

Blow Description IF - B.O.B. in 5 Minutes
ISI - Surface return
FF - B.O.B. in 6 Minutes
FSI - Surface return

Rec	Feet of	%gas	%oil	%water	%mud
<u>124</u>	<u>HOCM</u>	<u>40</u>		<u>60</u>	
<u>186</u>	<u>60</u>	<u>20</u>	<u>80</u>		
	<u>186' of G.I.P.</u>				

Rec Total 310' BHT 1220 Gravity 38 API RW — @ — °F Chlorides — ppm

(A) Initial Hydrostatic <u>1945</u>	<input checked="" type="checkbox"/> Test <u>1150</u>	T-On Location <u>12:31 pm</u>
(B) First Initial Flow <u>35</u>	<input type="checkbox"/> Jars <u>—</u>	T-Started <u>12:45 pm</u>
(C) First Final Flow <u>103</u>	<input type="checkbox"/> Safety Joint <u>—</u>	T-Open <u>3:02 pm</u>
(D) Initial Shut-In <u>1146</u>	<input type="checkbox"/> Circ Sub <u>—</u>	T-Pulled <u>5:30 pm</u>
(E) Second Initial Flow <u>123</u>	<input type="checkbox"/> Hourly Standby <u>—</u>	T-Out <u>8:08 pm</u>
(F) Second Final Flow <u>147</u>	<input checked="" type="checkbox"/> Mileage <u>60 RT</u> 93	Comments <u>—</u>
(G) Final Shut-In <u>1121 1121</u>	<input type="checkbox"/> Sampler <u>—</u>	
(H) Final Hydrostatic <u>1853</u>	<input type="checkbox"/> Straddle <u>—</u>	<input type="checkbox"/> Ruined Shale Packer <u>—</u>
Initial Open <u>30</u>	<input type="checkbox"/> Shale Packer <u>—</u>	<input type="checkbox"/> Ruined Packer <u>—</u>
Initial Shut-In <u>45</u>	<input type="checkbox"/> Extra Packer <u>—</u>	<input type="checkbox"/> Extra Copies <u>—</u>
Final Flow <u>30</u>	<input type="checkbox"/> Extra Recorder <u>—</u>	Sub Total <u>0</u>
Final Shut-In <u>45</u>	<input type="checkbox"/> Day Standby <u>—</u>	Total <u>1243</u>
	<input type="checkbox"/> Accessibility <u>—</u>	MP/DST Disc't <u>—</u>
	Sub Total <u>1243</u>	

Approved By _____ Our Representative Cody Blah

TriLOBITE TESTING INC. shall not be liable for damaged of any kind of the property or personnel of the one for whom a test is made, or for any loss suffered or sustained, directly or indirectly, through the use of its equipment, or its statements or opinion concerning the results of any test, tools lost or damaged in the hole shall be paid for at cost by the party for whom the test is made.