

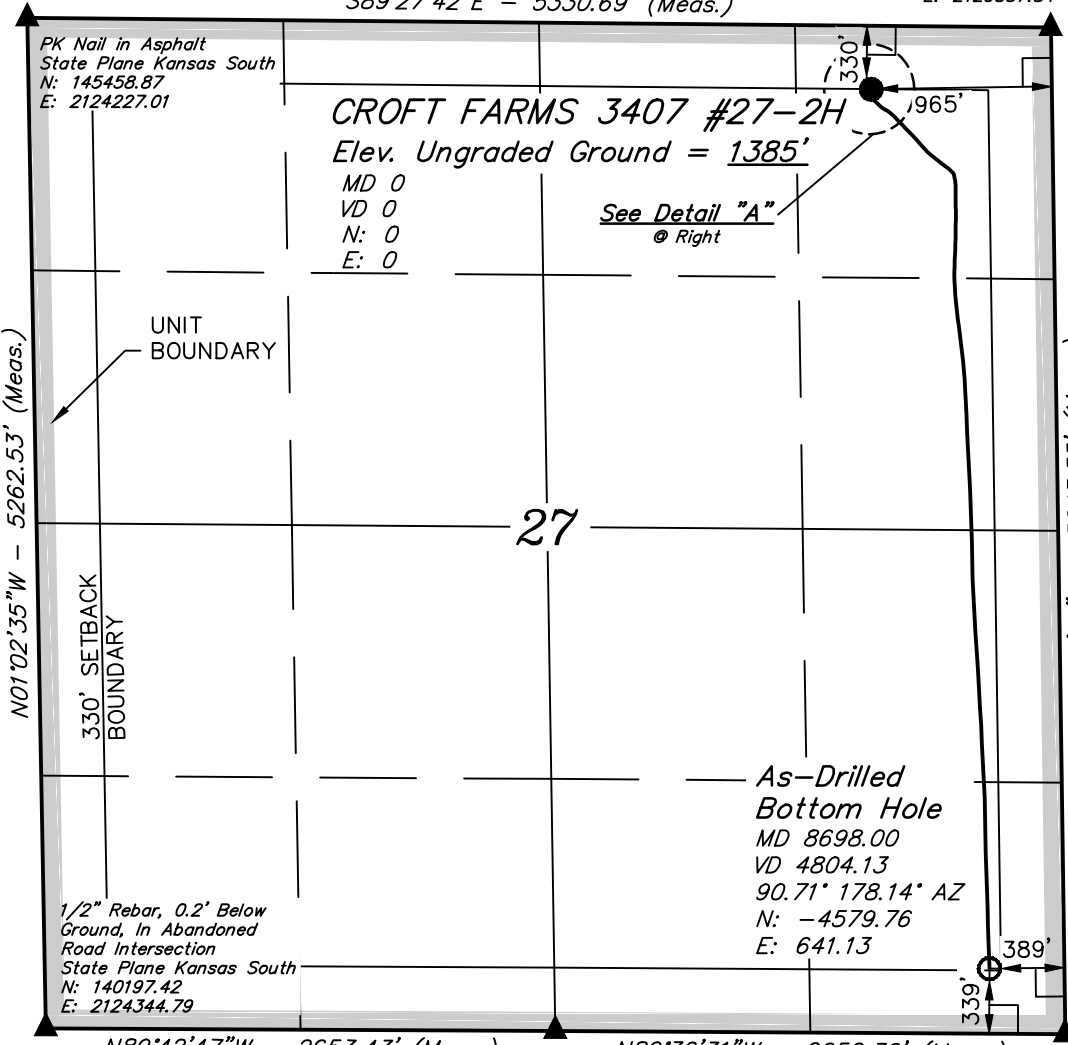
T34S, R7W, 6th P.M.

SGOMI

Well location, CROFT FARMS 3407 #27-2H, located as shown in the NE 1/4 NE 1/4 of Section 27, T34S, R7W, 6th P.M., Harper County, Kansas.

5/8" Rebar 0.1' Below Ground, in Asphalt Road
State Plane Kansas South
N: 145431.08
E: 2129557.84

S89°27'42"E - 5330.69' (Meas.)

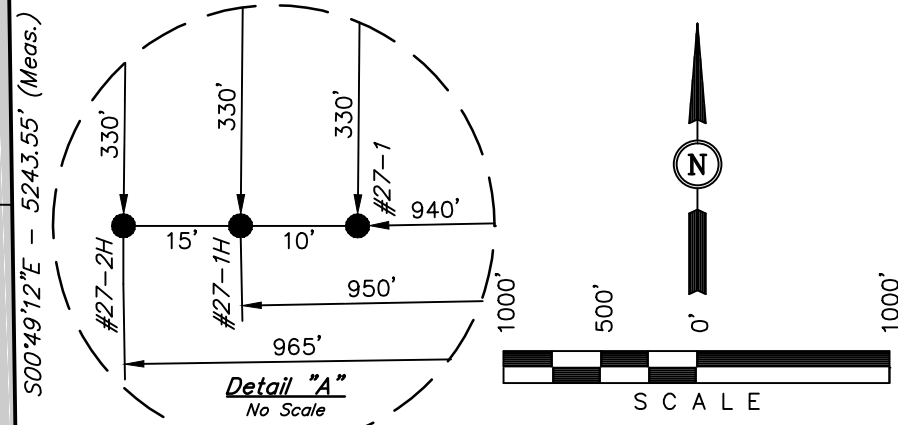


BASIS OF ELEVATION

SPOT ELEVATION LOCATED AT THE NORTHEAST CORNER OF SECTION 22, T33S, R7W, 6th P.M. TAKEN FROM THE ANTHONY, QUADRANGLE, KANSAS, HARPER COUNTY, 7.5 MINUTE QUAD (TOPOGRAPHIC MAP) PUBLISHED BY THE UNITED STATES DEPARTMENT OF THE INTERIOR, GEOLOGICAL SURVEY. SAID ELEVATION IS MARKED AS BEING 1348 FEET.

BASIS OF BEARINGS

BASIS OF BEARINGS IS A G.P.S. OBSERVATION.



CERTIFICATE

THIS IS TO CERTIFY THAT THE ABOVE PLAT WAS PREPARED FROM FIELD NOTES OF ACTUAL SURVEYS MADE BY ME OR UNDER MY SUPERVISION AND THAT THE SAME ARE TRUE AND CORRECT TO THE BEST OF MY KNOWLEDGE AND BELIEF.

Robert J. ...
REGISTERED LAND SURVEYOR
REGISTRATION NO. 1457
STATE OF KANSAS

LEGEND:

- = 90° SYMBOL
- = PROPOSED WELL HEAD.
- ▲ = SECTION CORNERS LOCATED.

5/8" Rebar, 0.4' High, Fence Corner
State Plane Kansas South
N: 140195.22
E: 2126998.33

1/2" Rebar, 0.3' Below Ground, Steel Post
State Plane Kansas South
N: 140188.19
E: 2129654.79

UINTAH ENGINEERING & LAND SURVEYING
85 SOUTH 200 EAST - VERNAL, UTAH 84078
(435) 789-1017

NAD 83 (#27-2H AS-DRILLED BOTTOM HOLE)	NAD 83 (#27-2H SURFACE LOCATION)
LATITUDE = 37°03'06.44" (37.051789)	LATITUDE = 37°03'51.72" (37.064367)
LONGITUDE = 98°03'26.83" (98.057453)	LONGITUDE = 98°03'34.71" (98.059642)
NAD 27 (#27-2H AS-DRILLED BOTTOM HOLE)	NAD 27 (#27-2H SURFACE LOCATION)
LATITUDE = 37°03'06.35" (37.051764)	LATITUDE = 37°03'51.63" (37.064342)
LONGITUDE = 98°03'25.60" (98.057111)	LONGITUDE = 98°03'33.48" (98.059300)
STATE PLANE NAD 27 (KANSAS SOUTH)	STATE PLANE NAD 27 (KANSAS SOUTH)
N: 140528.67 E: 2129258.96	N: 145105.91 E: 2128598.67

SCALE 1" = 1000'	DATE SURVEYED: 01-17-13	DATE DRAWN: 01-31-13
PARTY L.S. J.P. C.A.G.	REFERENCES G.L.O. PLAT	
WEATHER COLD	FILE SGOMI	