



**GEOLOGISTS' REPORT**

OPERATOR **MURFIN DRILLING COMPANY, INC.**  
LEASE **HANEKE INV # 1-18**

LOCATION **2550 FNL & 1100 FWL**

SEC **18** TWPSP **11S** RGE **20W**

COUNTY **ELLIS** STATE **KANSAS**

FIELD **WILDCAT**

CONTRACTOR **Murfin Drilling Company** RIG NO. **16**

COMMENCED **2 Nov. 2012** COMPLETED **10 Nov. 2012**

MUD DISPLAYED **2891** MUD TYPE **Chemical**

DRILLING TIME KEPT FROM **3085** TO **3814**

SAMPLES SAVED FROM **3085** TO **3814**

SAMPLES EXAMINED FROM **3085** TO **3814**

GEOLOGICAL SUPERVISION FROM **3203** TO **3814**

GEOLOGIST ON WELL **Paul Gunzelman**

FORMATION NAME LOG

STONE CORRAL TOP DATUM **1580** TOP DATUM **1583** +557

BASE/ANHYDRITE TOP DATUM **1620** TOP DATUM **1625** +515

TOPEKA TOP DATUM **3181** TOP DATUM **3183** -1043

HEEBNER SHALE TOP DATUM **3394** TOP DATUM **3396** -1254

TORONTO TOP DATUM **3415** TOP DATUM **3420** -1275

LANSING TOP DATUM **3432** TOP DATUM **3436** -1292

BASE/KANSAS CITY TOP DATUM **3657** TOP DATUM **3658** -1517

ARBUCKLE TOP DATUM **3738** TOP DATUM **3744** -1598

TOTAL DEPTH **3812** TOP DATUM **3814** -1672

**ELEVATIONS**

KB **2140 Ft.**

GL **2135 Ft.**

ALL MEASUREMENTS FROM K.R.

**CASINO RECORD**

Conductor Name

Surface **8.5ft' @ 217'**

Production None

**ELECTRICAL SURVEYS:**

Comp. Neutron Density

Comp. Induction

Dual Induction

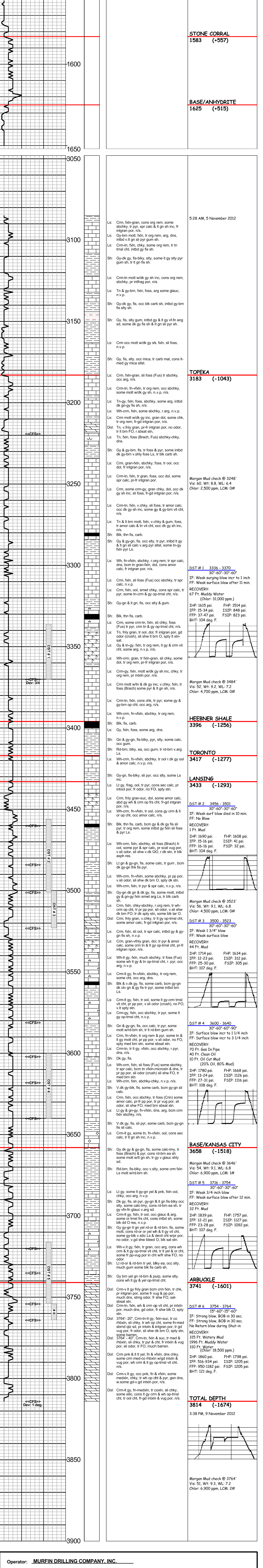
Micro-resistivity

Comp. Sonic



FORMATION NAME	LOG	TOP DATUM	TOP DATUM	SAMPLE	DATE
Stone Corral		1580	1583	+557	
Base/Anhydrite		1620	1625	+515	
Topeka		3181	3183	-1043	
Heebner Shale		3394	3396	-1254	
Toronto		3415	3420	-1280	
Lansing		3432	3436	-1296	
Base/Kansas City		3657	3658	-1518	
Arbuckle		3738	3744	-1604	
Total Depth		3812	3814	-1674	

DRILL TIME (MIN/FT)	DEPTH	LITHOLOGY	SAMPLE DESCRIPTIONS	REMARKS
<b>REMARKS</b>				
API 15-051-26418-00-00				
Drilling Fluids: Morgan Mud, Inc. (Cade Lines, engineer)				
Drill Stem Testing: Tribolite Testing, Inc. (Jim Svaty, tester)				
Gas Trailer: No Gas Trailer				
Reserve Pit Chlorides: 34,000 ppm.				



Operator: **MURFIN DRILLING COMPANY, INC.**  
 Lease: **HANEKE INV # 1-18**  
 Location: **2550 FNL & 1100 FWL SEC. 18 TWPSP 11S RGE 20W**  
 County: **ELLIS** State: **KANSAS**