



James C. Musgrove  
Petroleum Geologist

Office  
(620) 588-4250

212 Main St. • P.O. Box 215 • Claflin, KS 67525

Home  
(620) 587-3444

## GEOLOGIST'S REPORT

DRILLING TIME AND SAMPLE LOG

COMPANY <u>Blue Ridge Petroleum Corporation</u> LEASE <u>Schoen Trust #1-15</u> FIELD <u>Schoen</u> LOCATION <u>NE-SW-SW-SW 465' E 470' FWL</u> SEC <u>15</u> TWSP <u>G<sup>3</sup></u> RGE <u>25<sup>W</sup></u> COUNTY <u>Graham</u> STATE <u>Kansas</u>		ELEVATIONS KB <u>2584</u> DF _____ GL <u>2575</u> Measurements Are All From <u>KB</u>	
CONTRACTOR <u>Southwind Drilling Rig #2</u> SPUD <u>11-09-12</u> COMP <u>11-15-12</u> RTD <u>3950</u> LTD <u>3954</u> mud up <u>±3350</u> Type mud <u>Chemical Displaced</u>		CASING SURFACE <u>878' @ 347'</u> PRODUCTION <u>5/21 @ 3953</u> ELECTRICAL SURVEYS By <u>Nabors</u> <u>CNL/CDE DII Micro Sonic</u>	
SAMPLES saved <u>3200</u> Drilling time kept <u>3200</u> samples examined <u>3400</u> Geological Supervision <u>3675</u> GEOLOGIST ON <u>Kurt Talbott</u>		TO _____ TO <u>RTD</u> TO _____ TO _____	
FORMATION TOPS	LOG	SAMPLER LOGS	
Anhydrite	2169		
Base Anhydrite	2198		
Preka	3449 (-865)		
Heebner	3655 -1071		
Pronto	3677 -1093		
Lansing	3694 -1110		
Base Kansas City	3879 -1295		
RTD	3950 -1366		
LTD	3954 -1370		

5 1/2" production casing was  
set & cemented on the Schoen Trust #1-15  
Respectfully submitted,  
Kurt Blotts

LEGEND



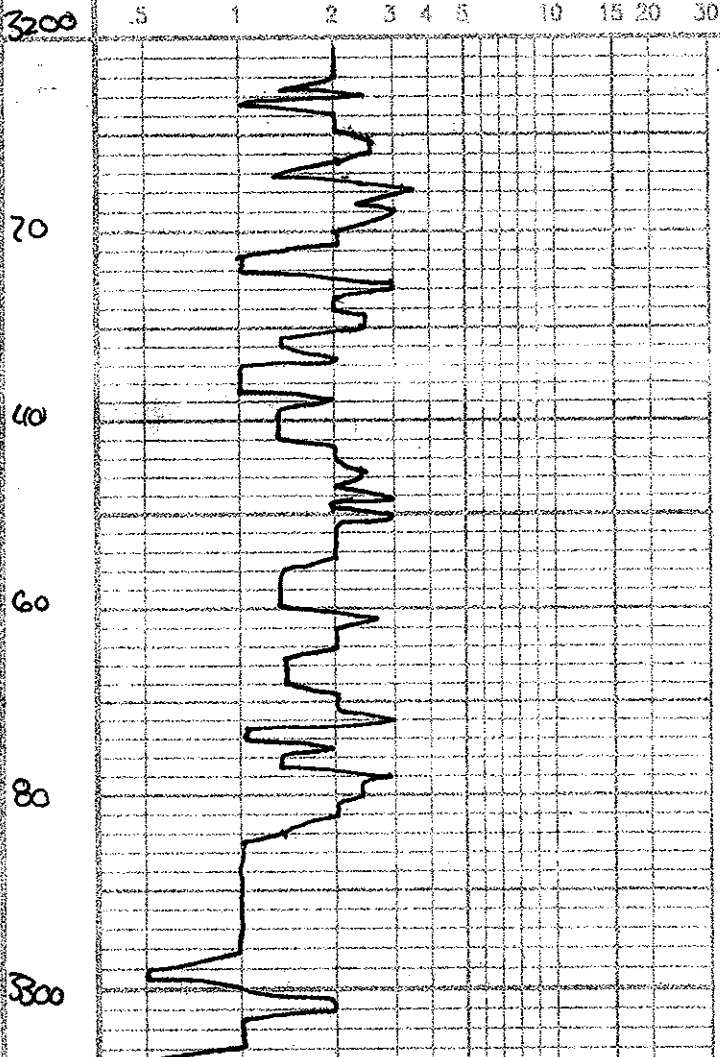
LITHOLOGY

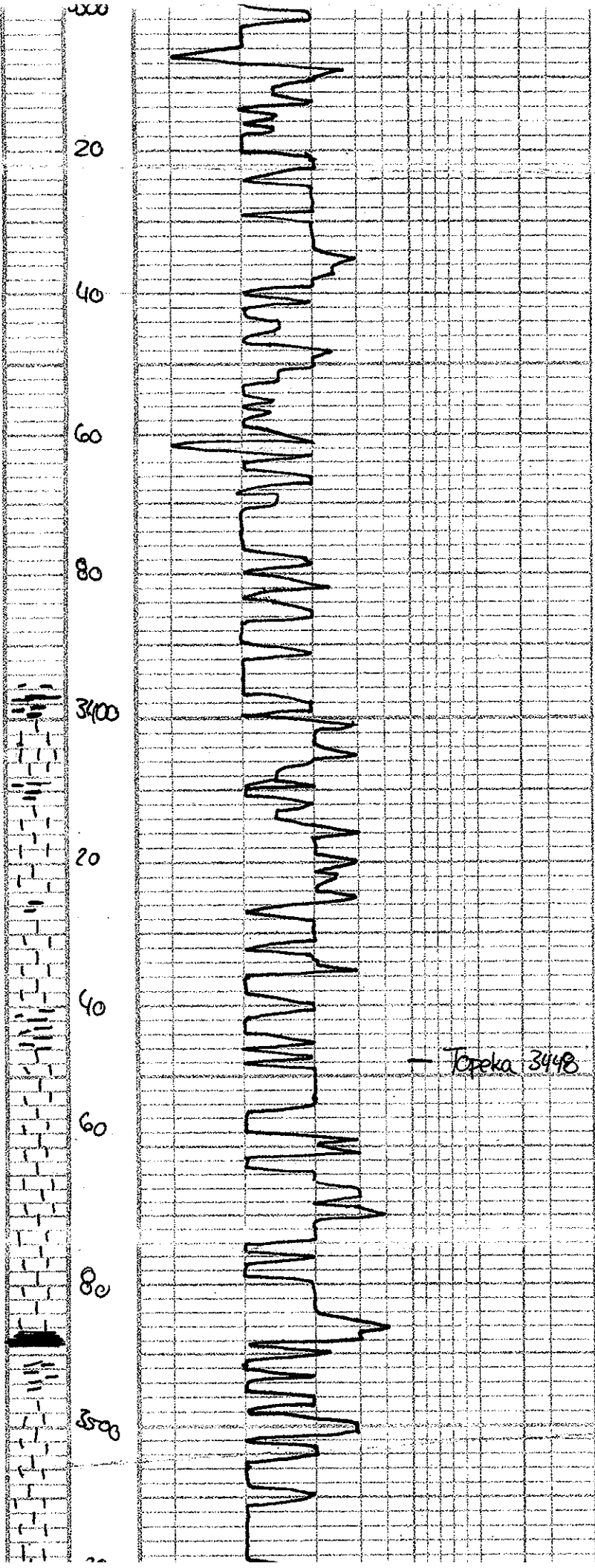
DEPTH

DRILLING TIME  
(Logarithmic Scale)

SAMPLE DESCRIPTIONS

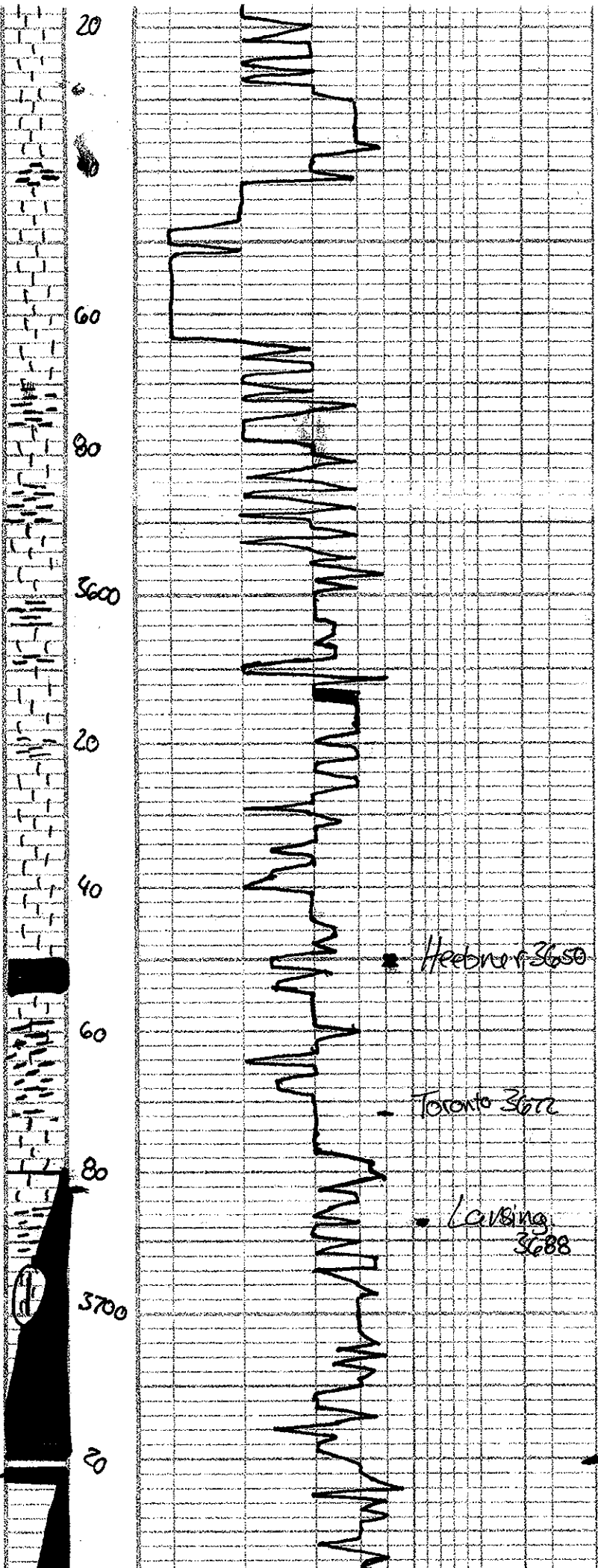
REMARKS





2584 KB

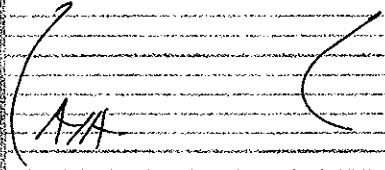
Tereka 3448



2584 KB

LS crm/ltgy. R med fm. poor vis. thin, Chalky. few fossils/col.

LS crm/ltgy/tan. R med fm. Successive, poor vis., chalky.



LS crm/ltgy. R fm. Successive poor vis. thin, Chalky.

LS grey fm. Successive, poor vis., sh. Slate-black carbon

LS-lyt/ltgy, R fm. Fossils, oolitic, sh, poor vis.

LS crm/ltgy/tan. R fm. oolitic. Change poor vis. thin. Col. sh. Heavy blue sh. S.F.O. color.

LS crm/tan. R fm. oolitic. poor vis. thin. Blue sh. S.F.O. color.

LS crm. R fm. Fossils/col. poor vis. sh. (sh. noted/col. sh. golden brown sh. S.F.O.)

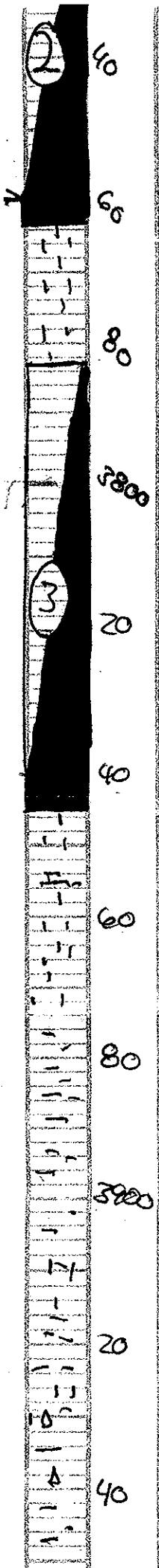
LS-lyt/crm. R fm. poorly developed. Scattered heavy, dark brown sh. S.F.O. Et color. Chalky.

DST #1 3680-3720  
30.30.30-48

Blow; Died in 9mi  
Recovery -  
2' mud

Pressures  
JSEP - 585 psi  
FSEP - 817 psi  
LFP - 16.17 psi  
FFP - 17.19 psi  
HSH - 1796 - 1789 psi

DST #2 3721-3725  
Blow; Built to 2 1/2'



LS. unit/gray, fym, dense, poor vis & sp. brn stns, NSF0  
air odor.

LS. gray, fym, poor scattered green brn stns, SF0

LS. unit/cim, fym, scattered poor scattered, thin oil to finely blue, golden brn stns, SF0

LS. unit/cim, fym, dense, oil, poor scattered, thin oil to finely blue, golden brn stns, NSF0  
no odor

Shale-brn/red. D-tangry.

LS. cm/unit/buff, fym, few fossiliferous dense, porous, pyrite, shale-gray brn

S. crin/lan, calcimite, fym, poor thin oil to fine, oil, thin brn stns NSF0, fluor.

LS. gray/wh/cim, fym, oil, poor thin oil to scale some, thin brn stns, NSF0, chalky.

LS. gray/wh, fym, oil, poor to interbedded green to dark brn stns, broken dense, porous, chalky, shale gray

LS. unit/cim, fym, oil, poor, thin oil to finely vis & heavy golden to dark brn stns, SF0, chalky.

LS. unit, fym, dense, porous shale-brn/gy, Mulschans

LS. unit, fym, silty, chalky, poor vis & shale-brn, No. 2 shows.

LS. unit/gray, fym, poor vis & stns? NSF0, no odor.

Shale gray/brn/bwn few silty, silty

A/A

LS. unit/gray, silty, oil, poor vis & dense

LS. unit/gray, silty, oil, poor vis & dense

DY-A/A

Recovery-  
31' mud

Pressures-  
ISIP - 1150 psi  
FSIP - 1130 psi  
IFP - 17-26 psi  
FFP - 31-34 psi  
HSH - 1880-1800 psi

DST #3 3783  
30-30-45-6  
Blow; Built to  
No return

Recovery;  
5' clean oil  
5' muddy oil  
(55% oil, 45% gas)  
62' OCM  
(5% oil, 95% gas)

Pressures;  
ISIP - 799 psi  
FSIP - 829 psi  
IFP - 20-34 psi  
FFP - 35-48 psi  
HSH - 1842-1817 psi

Base Kansas City 3881

