

T21S, R6W, 6th P.M.

2 Sandstones, UELS Alum. Cap 0.3' Below Ground
NAD 27 Kansas South
N: 570222.33
E: 2139569.42

SGOMI

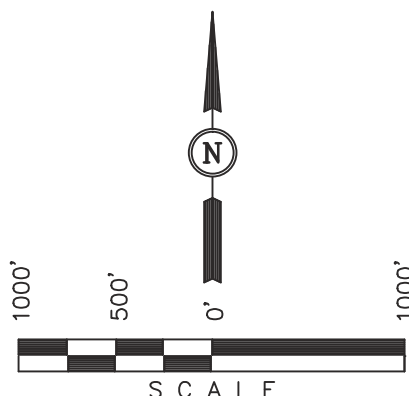
Well location, HEDRICK 2106 #19-1H, located as shown in the SE 1/4 NE 1/4 of Section 19, T21S, R6W, 6th P.M., Rice County, Kansas.

BASIS OF ELEVATION

SPOT ELEVATION LOCATED AT THE SW CORNER OF SECTION 18, T23S, R8W, 6th P.M. TAKEN FROM THE ALDEN SE, QUADRANGLE, KANSAS, RENO COUNTY, 7.5 MINUTE QUAD (TOPOGRAPHIC MAP) PUBLISHED BY THE UNITED STATES DEPARTMENT OF THE INTERIOR, GEOLOGICAL SURVEY, SAID ELEVATION IS MARKED AS BEING 1688 FEET.

BASIS OF BEARINGS

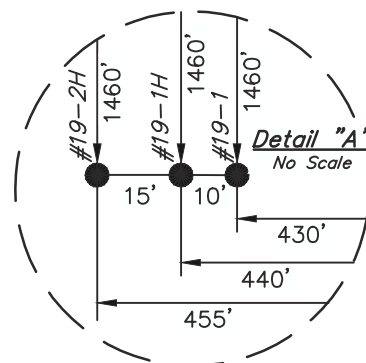
BASIS OF BEARINGS IS A G.P.S. OBSERVATION.



LINE TABLE		
LINE	DIRECTION	LENGTH
L1	N00°03'54"W	385.09'

LEGEND:

- └─┘ = 90° SYMBOL
- = PROPOSED WELL HEAD.
- ▲ = SECTION CORNERS LOCATED.



NAD 83 (#19-1H SURFACE LOCATION)	
LATITUDE = 38°12'47.01" (38.213058)	LONGITUDE = 98°00'56.72" (98.015756)
NAD 27 (#19-1H SURFACE LOCATION)	
LATITUDE = 38°12'46.97" (38.213047)	LONGITUDE = 98°00'55.53" (98.015425)
STATE PLANE NAD 27 (KANSAS SOUTH)	
N: 563427.56	E: 2139227.69
NAD 83 (#19-1H FORMATION ENTRY)	
LATITUDE = 38°12'50.82" (38.214117)	LONGITUDE = 98°00'56.72" (98.015756)
NAD 27 (#19-1H FORMATION ENTRY)	
LATITUDE = 38°12'50.78" (38.214106)	LONGITUDE = 98°00'55.52" (98.015422)
STATE PLANE NAD 27 (KANSAS SOUTH)	
N: 563812.62	E: 2139226.23
NAD 83 (#19-1H TARGET BOTTOM HOLE)	
LATITUDE = 38°13'36.09" (38.226692)	LONGITUDE = 98°00'57.23" (98.015897)
NAD 27 (#19-1H TARGET BOTTOM HOLE)	
LATITUDE = 38°13'36.06" (38.226683)	LONGITUDE = 98°00'56.04" (98.015567)
STATE PLANE NAD 27 (KANSAS SOUTH)	
N: 568392.03	E: 2139161.14

CERTIFICATE

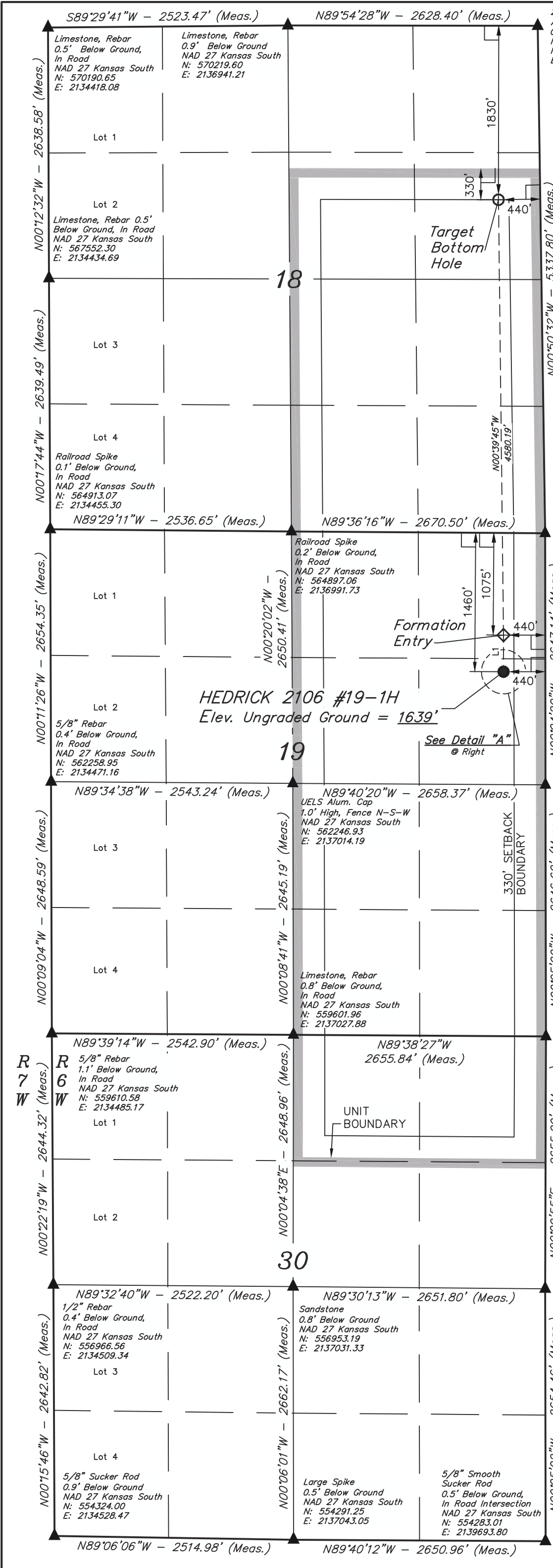
THIS IS TO CERTIFY THAT THE ABOVE PLAT WAS PREPARED FROM FIELD NOTES OF ACTUAL SURVEYS MADE BY ME OR UNDER MY SUPERVISION AND THAT THE SAME ARE TRUE AND CORRECT TO THE BEST OF MY KNOWLEDGE AND BELIEF.

REGISTERED LAND SURVEYOR
REGISTRATION NO. 1458
STATE OF KANSAS

REVISED: 02-06-13
REVISED: 11-29-12
REVISED: 11-16-12

UINTAH ENGINEERING & LAND SURVEYING
85 SOUTH 200 EAST - VERNAL, UTAH 84078
(435) 789-1017

SCALE 1" = 1000'	DATE SURVEYED: 08-15-12	DATE DRAWN: 09-11-12
PARTY J.P. C.B. C.A.G.	REFERENCES G.L.O. PLAT	
WEATHER HOT	FILE SGOMI	



5/8" Rebar
1.4' Below Ground,
In Road
NAD 27 Kansas South
N: 564885.70
E: 2139662.01

1/2" Iron Bar
0.4' Below Ground,
In Road
NAD 27 Kansas South
N: 562238.77
E: 2139672.36

Limestone, Rebar
1.0' Below Ground,
In Road
NAD 27 Kansas South
N: 559592.36
E: 2139683.50

5/8" Smooth
Sucker Rod
0.5' Below Ground,
In Road
NAD 27 Kansas South
N: 556937.26
E: 2139682.88

Large Spike
0.5' Below Ground
NAD 27 Kansas South
N: 554291.25
E: 2137043.05

5/8" Smooth
Sucker Rod
0.5' Below Ground,
In Road Intersection
NAD 27 Kansas South
N: 554283.01
E: 2139693.80