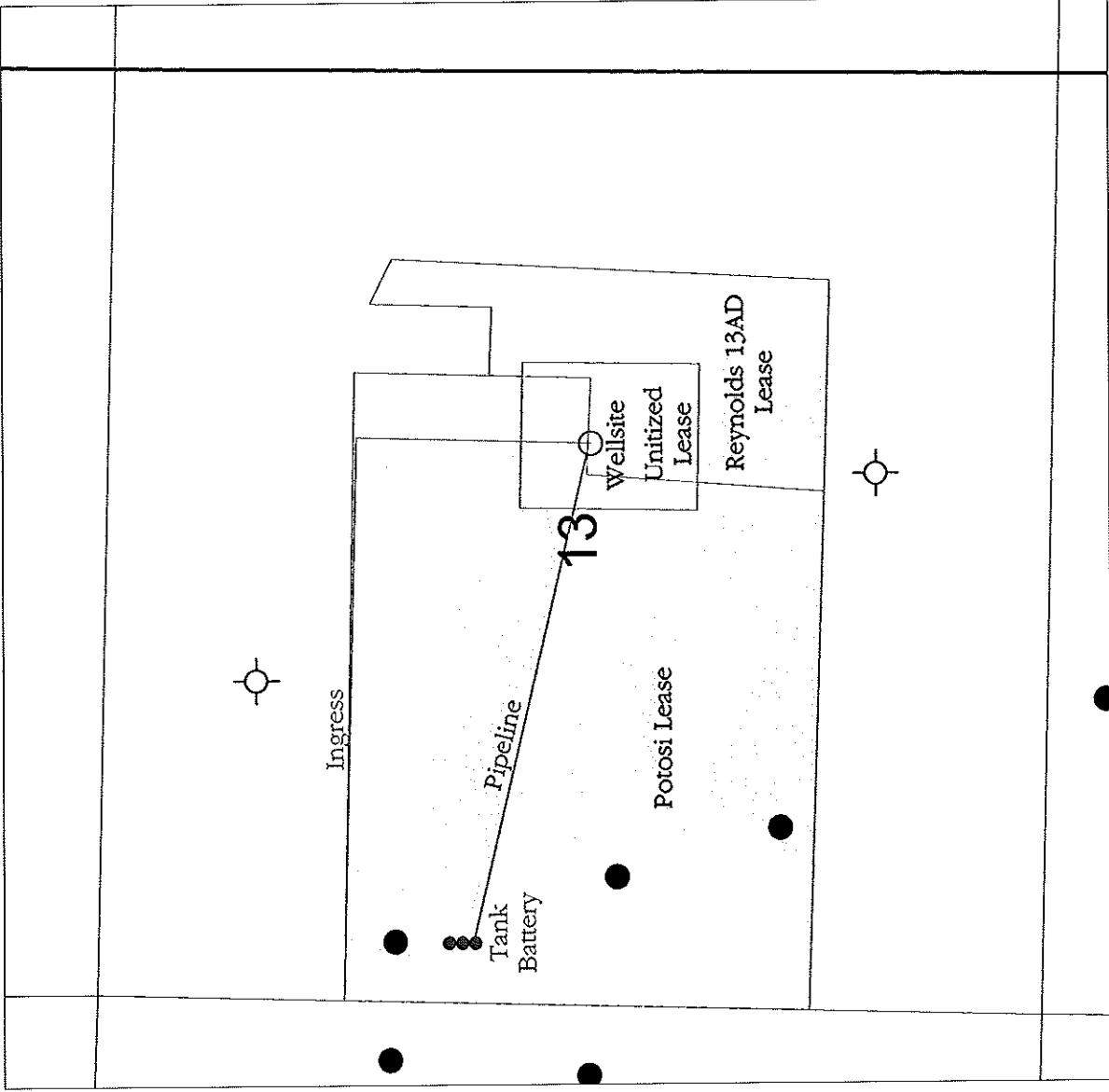


KANSAS SURFACE OWNER NOTIFICATION ACT

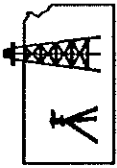
R 24 W

T
27
S

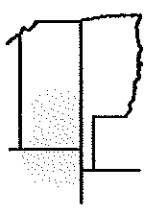


SCALE = 1 : 12,000

FORD COUNTY, KANSAS



Pro-Stake LLC
Oil Field & Construction Site Staking
 P.O. Box 2324
 Garden City, Kansas 67846
 Office/Fax: (620) 276-6159
 Cell: (620) 272-1499



132724L
 PLAT NO.

10674
 INVOICE NO.

Ritchie Exploration, Inc.
 OPERATOR

#1 Reynolds-Potosi
 LEASE NAME

Ford County, KS
 COUNTY

2580' FSL - 2080' FEL
 LOCATION SPOT

13 Sec. 27s Twp. 24w Rng.

GR. ELEVATION: 2431.9'

SCALE: 1" = 1000'
 DATE: Feb. 13th, 2013
 MEASURED BY: Ben R.
 DRAWN BY: Drew H.
 AUTHORIZED BY: Justin C.



Directions: From the North side of Fort Dodge, Ks at the intersection of Hwy 400 & Sheridan St. South - Now go 1.8 miles E-SE on Hwy 400 - Now go 1.1 mile South on 117 Rd to the NW corner of section 13-27s-24w - Now go 0.2 mile South on 117 Rd - Now go 0.6 mile East on Lariat Way to ingress stake South into - Now go approx. 1370' SE through pasture with horses - Now go 183' East through pasture into staked location.
Final ingress must be verified with land owner or Operator.

This drawing does not constitute a monumented survey or a land survey plat.

This drawing is for construction purposes only.

