



TRILOBITE TESTING, INC.

DRILL STEM TEST REPORT

Shelby Resources, LLC
 2717 Canal Blvd.
 Suite C Hays KS 67601
 ATTN: Jermy Schwartz

24-17-14, Barton, KS

CS Unit #1

Job Ticket: 50787

DST#: 5

Test Start: 2012.10.28 @ 00:45:00

GENERAL INFORMATION:

Formation: **Arb.**
 Deviated: No Whipstock: ft (KB)
 Time Tool Opened: 02:41:30
 Time Test Ended: 08:41:00
 Interval: **3459.00 ft (KB) To 3467.00 ft (KB) (TVD)**
 Total Depth: 3467.00 ft (KB) (TVD)
 Hole Diameter: 7.88 inches Hole Condition: Fair
 Test Type: Conventional Bottom Hole (Reset)
 Tester: Brett Dickinson
 Unit No: 59
 Reference Elevations: 1958.00 ft (KB)
 1949.00 ft (CF)
 KB to GR/CF: 9.00 ft

Serial #: 8319

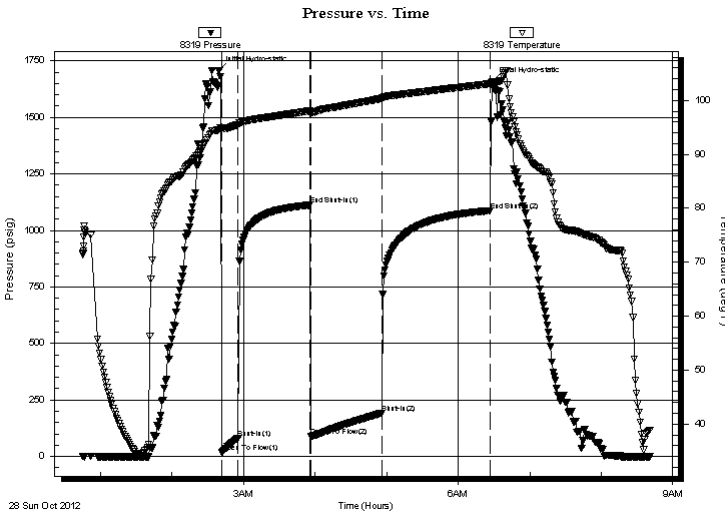
Outside

Press @ Run Depth: 192.41 psig @ 3460.00 ft (KB)
 Start Date: 2012.10.28 End Date: 2012.10.28
 Start Time: 00:45:05 End Time: 08:40:59

Capacity: 8000.00 psig
 Last Calib.: 2012.10.28
 Time On Btm: 2012.10.28 @ 02:39:30
 Time Off Btm: 2012.10.28 @ 06:28:30

TEST COMMENT: IF-BOB in 11min
 ISI-1in blow died back to 3/4in
 FF-BOB in 12min
 FSI-Very weak surface blow died in 40min

PRESSURE SUMMARY



Time (Min.)	Pressure (psig)	Temp (deg F)	Annotation
0	1708.04	94.56	Initial Hydro-static
2	16.99	94.91	Open To Flow (1)
16	80.52	95.51	Shut-In(1)
76	1112.11	98.07	End Shut-In(1)
77	87.90	97.85	Open To Flow (2)
137	192.41	100.33	Shut-In(2)
227	1087.72	103.07	End Shut-In(2)
229	1657.33	103.30	Final Hydro-static

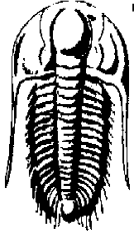
Recovery

Length (ft)	Description	Volume (bbl)
10.00	MCO 60%O 40%M	0.05
505.00	GO 25%G 75%O	5.26
0.00	170ft GIP	0.00

* Recovery from multiple tests

Gas Rates

	Choke (inches)	Pressure (psig)	Gas Rate (Mcf/d)



TRILOBITE TESTING, INC.

DRILL STEM TEST REPORT

Shelby Resources, LLC

24-17-14, Barton, KS

2717 Canal Blvd.
Suite C Hays KS 67601

CS Unit #1

Job Ticket: 50787 **DST#: 5**

ATTN: Jermy Schwartz

Test Start: 2012.10.28 @ 00:45:00

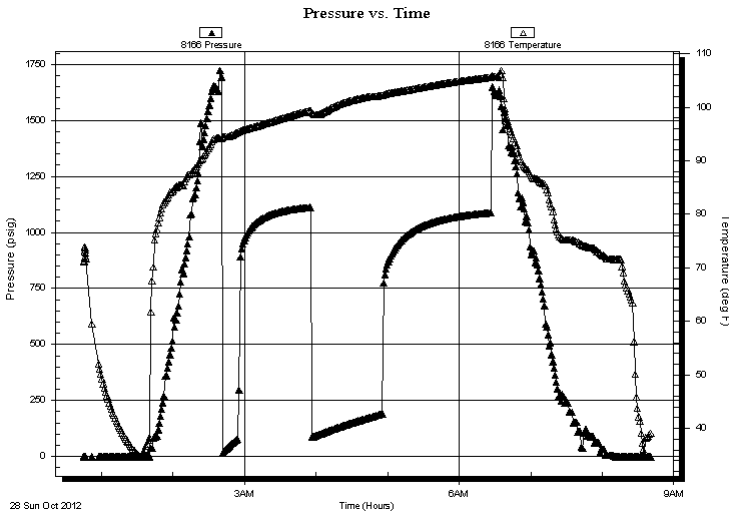
GENERAL INFORMATION:

Formation: Arb.		Test Type: Conventional Bottom Hole (Reset)
Deviated: No Whipstock: ft (KB)		Tester: Brett Dickinson
Time Tool Opened: 02:41:30		Unit No: 59
Time Test Ended: 08:41:00		
Interval: 3459.00 ft (KB) To 3467.00 ft (KB) (TVD)		Reference Elevations: 1958.00 ft (KB)
Total Depth: 3467.00 ft (KB) (TVD)		1949.00 ft (CF)
Hole Diameter: 7.88 inches Hole Condition: Fair		KB to GR/CF: 9.00 ft

Serial #: 8166	Inside				
Press @ Run Depth: psig @ 3460.00 ft (KB)	Capacity: 8000.00 psig				
Start Date: 2012.10.28 End Date: 2012.10.28	Last Calib.: 2012.10.28				
Start Time: 00:45:05 End Time: 08:40:29	Time On Btm: Time Off Btm:				

TEST COMMENT: IF-BOB in 11min
 IS-1in blow died back to 3/4in
 FF-BOB in 12min
 FS-Very weak surface blow died in 40min

PRESSURE SUMMARY



Time (Min.)	Pressure (psig)	Temp (deg F)	Annotation

Recovery

Length (ft)	Description	Volume (bbl)
10.00	MCO 60%O 40%M	0.05
505.00	GO 25%G 75%O	5.26
0.00	170ft GIP	0.00

* Recovery from multiple tests

Gas Rates

Choke (inches)	Pressure (psig)	Gas Rate (Mcf/d)



**TRILOBITE
TESTING, INC.**

DRILL STEM TEST REPORT

FLUID SUMMARY

Shelby Resources, LLC

24-17-14, Barton, KS

2717 Canal Blvd.
Suite C Hays KS 67601

CS Unit #1

Job Ticket: 50787

DST#: 5

ATTN: Jermy Schwartz

Test Start: 2012.10.28 @ 00:45:00

Mud and Cushion Information

Mud Type: Gel Chem

Cushion Type:

Oil API:

36 deg API

Mud Weight: 9.00 lb/gal

Cushion Length:

ft

Water Salinity:

ppm

Viscosity: 58.00 sec/qt

Cushion Volume:

bbbl

Water Loss: 7.60 in³

Gas Cushion Type:

Resistivity: ohm.m

Gas Cushion Pressure:

psig

Salinity: 7300.00 ppm

Filter Cake: inches

Recovery Information

Recovery Table

Length ft	Description	Volume bbl
10.00	MCO 60%O 40%M	0.049
505.00	GO 25%G 75%O	5.262
0.00	170ft GIP	0.000

Total Length: 515.00 ft

Total Volume: 5.311 bbl

Num Fluid Samples: 0

Num Gas Bombs: 0

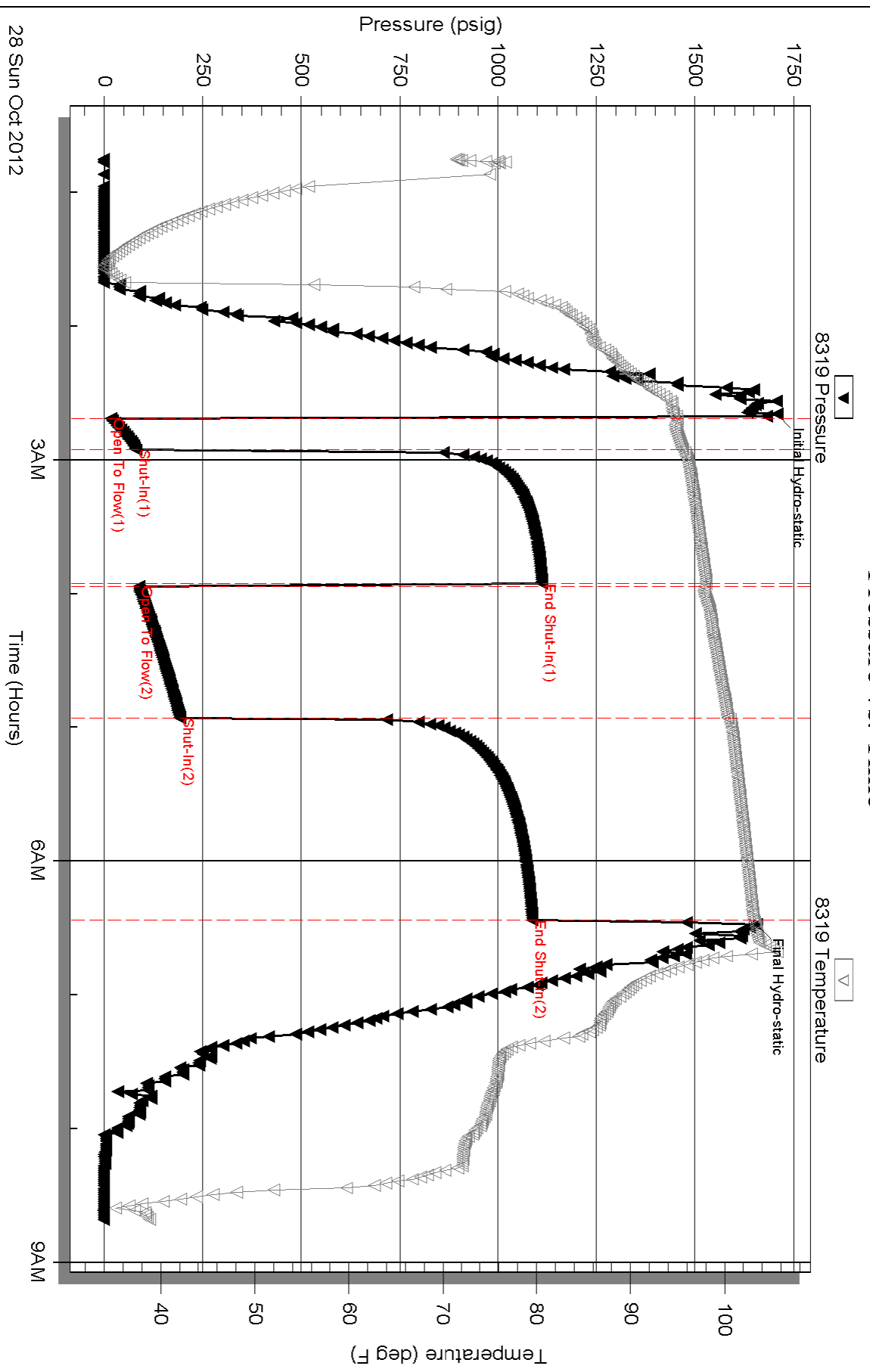
Serial #:

Laboratory Name:

Laboratory Location:

Recovery Comments:

Pressure vs. Time



Serial #: 8166

Inside

Shelby Resources, LLC

CS Unit #1

DST Test Number: 5

