



TRILOBITE TESTING, INC.

DRILL STEM TEST REPORT

Pioneer Resources

7-14s-31w Gove, KS

80 Windmill Dr.
Phillipsburg, KS 67661

Rail Road #3

Job Ticket: 48358

DST#: 1

ATTN: Charlie Sturdavant

Test Start: 2012.07.12 @ 22:07:06

GENERAL INFORMATION:

Formation: **Lansing B**

Deviated: No Whipstock ft (KB)

Time Tool Opened: 23:48:06

Time Test Ended: 04:20:36

Test Type: Conventional Bottom Hole (Initial)

Tester: Brandon Turley

Unit No: 60

Interval: 3954.00 ft (KB) To 3991.00 ft (KB) (TVD)

Total Depth: 3991.00 ft (KB) (TVD)

Hole Diameter: 7.88 inches Hole Condition: Good

Reference Elevations: 2896.00 ft (KB)

2891.00 ft (CF)

KB to GR/CF: 5.00 ft

Serial #: 8373

Inside

Press@RunDepth: 26.89 psig @ 3955.00 ft (KB)

Start Date: 2012.07.12

End Date:

2012.07.13

Capacity:

8000.00 psig

Start Time: 22:07:11

End Time:

04:20:35

Last Calib.:

2012.07.13

Time On Btm:

2012.07.12 @ 23:46:51

Time Off Btm:

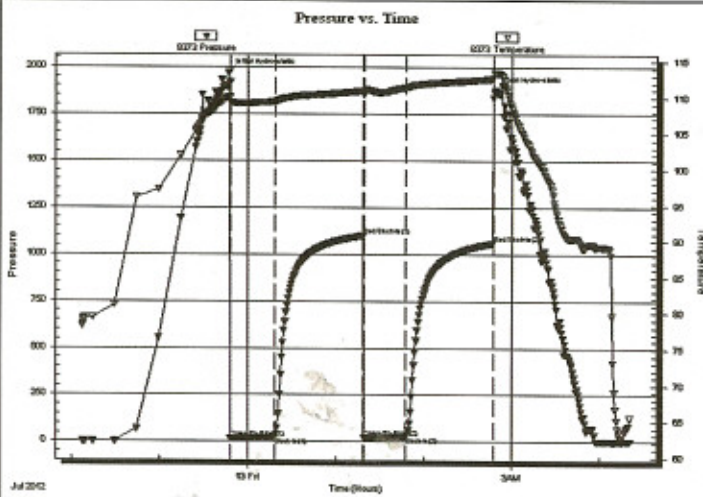
2012.07.13 @ 02:48:36

TEST COMMENT: IF: Weak blow died in 7 min.

IS: No return.

FF: No blow.

FS: No return.



PRESSURE SUMMARY

Time (Min.)	Pressure (psig)	Temp (deg F)	Annotation
0	1969.56	110.06	Initial Hydro-static
2	18.65	109.35	Open To Flow (1)
32	22.08	109.43	Shut-In(1)
92	1098.85	110.91	End Shut-In(1)
92	24.08	110.38	Open To Flow (2)
121	26.89	111.41	Shut-In(2)
181	1058.89	112.62	End Shut-In(2)
182	1876.57	113.44	Final Hydro-static

Recovery

Length (ft)	Description	Volume (bbl)
5.00	mud 100% m	0.02

Gas Rates

	Choke (inches)	Pressure (psig)	Gas Rate (Mcf/d)



**TRILOBITE
TESTING, INC**

DRILL STEM TEST REPORT

Pioneer Resources
80 Windmill Dr.
Phillipsburg, KS 67661
ATTN: Charlie Sturdavant

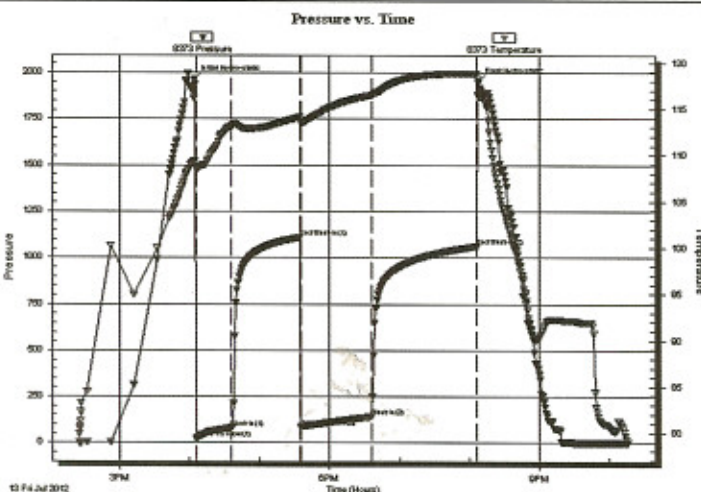
7-14s-31w Gove, KS
Rail Road #3
Job Ticket: 48359 **DST#: 2**
Test Start: 2012.07.13 @ 14:25:18

GENERAL INFORMATION:

Formation: **Lansing D**
Deviated: No Whipstock: ft (KB)
Time Tool Opened: 16:05:48
Time Test Ended: 22:16:03
Test Type: Conventional Straddle (Reset)
Tester: Brandon Turley
Unit No: 60
Interval: **4004.00 ft (KB) To 4027.00 ft (KB) (TVD)**
Total Depth: 4050.00 ft (KB) (TVD)
Reference Elevations: 2896.00 ft (KB)
2891.00 ft (CF)
Hole Diameter: 7.88 inches Hole Condition: Good
KB to GR/CF: 5.00 ft

Serial #: 8373 **Inside**
Pres@RunDepth: 141.75 psig @ 4005.00 ft (KB) Capacity: 8000.00 psig
Start Date: 2012.07.13 End Date: 2012.07.13 Last Calib.: 2012.07.13
Start Time: 14:25:23 End Time: 22:16:02 Time On Btm: 2012.07.13 @ 16:04:18
Time Off Btm: 2012.07.13 @ 20:07:33

TEST COMMENT: IF: BOB in 17 min.
IS: Surface blow built to a 1/2 died in 20 min.
FF: BOB in 18 min.
FS: Surface blow built to 1/4 died in 35 min.



PRESSURE SUMMARY

Time (Min.)	Pressure (psig)	Temp (deg F)	Annotation
0	1963.04	109.37	Initial Hydro-static
2	22.08	108.51	Open To Flow (1)
32	81.80	113.11	Shut-In(1)
91	1109.85	114.14	End Shut-In(1)
92	86.22	113.48	Open To Flow (2)
152	141.75	116.49	Shut-In(2)
242	1061.23	118.84	End Shut-In(2)
244	1955.55	116.45	Final Hydro-static

Recovery

Length (ft)	Description	Volume (bbl)
186.00	mcw 70%w 30%m	1.49
124.00	go 30%g 70%o	1.74
0.00	372 GIP	0.00

Gas Rates

Choke (inches)	Pressure (psig)	Gas Rate (Mcf/d)

* Recovery from multiple tests



**TRILOBITE
TESTING, INC.**

DRILL STEM TEST REPORT

Pioneer Resources

7-14s-31w Gove, KS

80 Windmill Dr.
Phillipsburg, KS 67661

Rail Road #3

Job Ticket: 48360

DST#: 3

ATTN: Charlie Sturdavant

Test Start: 2012.07.14 @ 09:57:36

GENERAL INFORMATION:

Formation: **Lansing H-I**

Deviated: No Whipstock: ft (KB)

Time Tool Opened: 11:39:06

Time Test Ended: 16:22:21

Test Type: Conventional Bottom Hole (Reset)

Tester: Brandon Turley

Unit No: 60

Interval: **4098.00 ft (KB) To 4150.00 ft (KB) (TVD)**

Total Depth: 4150.00 ft (KB) (TVD)

Hole Diameter: 7.88 inches Hole Condition: Good

Reference Elevations: 2896.00 ft (KB)

2891.00 ft (CF)

KB to GR/CF: 5.00 ft

Serial #: **8373**

Inside

Press@RunDepth: 45.59 psig @ 4099.00 ft (KB)

Start Date: 2012.07.14

End Date:

2012.07.14

Capacity: 8000.00 psig

Last Calib.:

2012.07.14

Start Time: 09:57:41

End Time:

16:22:20

Time On Btm: 2012.07.14 @ 11:37:51

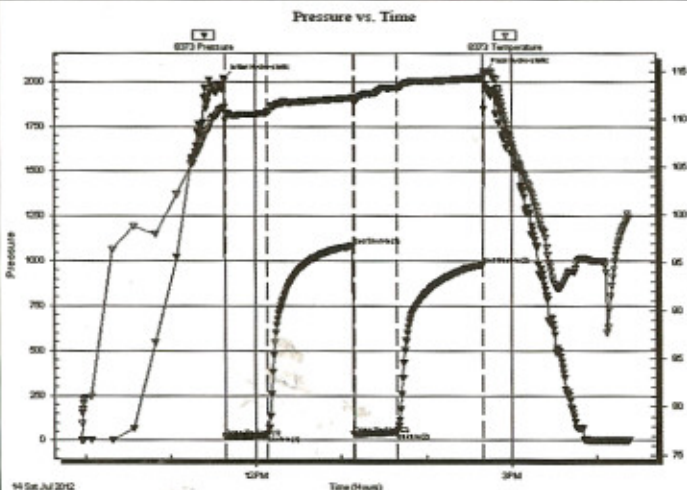
Time Off Btm: 2012.07.14 @ 14:40:36

TEST COMMENT: IF: Weak blow died in 9 min.

IS: No return.

FF: No blow.

FS: No return.



PRESSURE SUMMARY

Time (Min.)	Pressure (psig)	Temp (deg F)	Annotation
0	2018.78	111.24	Initial Hydro-static
2	18.50	110.64	Open To Flow (1)
31	31.44	110.76	Shut-In(1)
91	1085.95	112.24	End Shut-In(1)
91	33.92	111.75	Open To Flow (2)
121	45.59	113.30	Shut-In(2)
182	979.22	114.35	End Shut-In(2)
183	2057.58	114.85	Final Hydro-static

Recovery

Length (ft)	Description	Volume (bbl)
60.00	ocm 5%o 95%m	0.30

* Recovery from multiple tests

Gas Rates

	Choke (inches)	Pressure (psig)	Gas Rate (Mcf/d)



TRILOBITE TESTING, INC.

DRILL STEM TEST REPORT

Pioneer Resources
80 Windmill Dr.
Phillipsburg, KS 67661
ATTN: Charlie Sturdavant

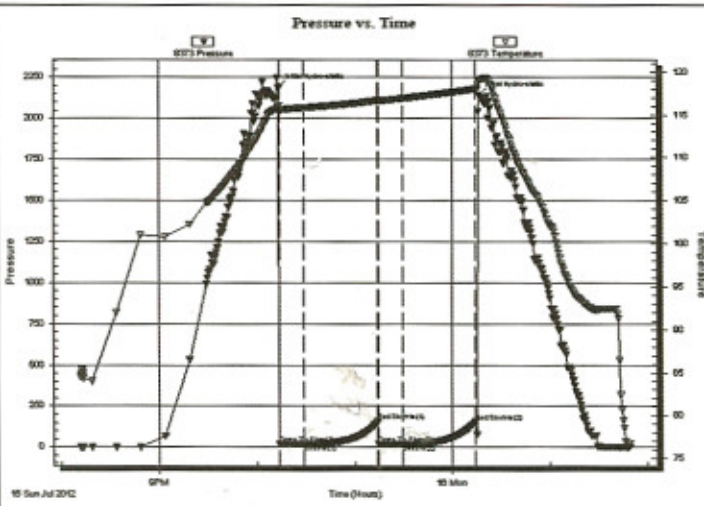
7-14s-31w Gove, KS
Rail Road #3
Job Ticket: 48398 **DST#: 4**
Test Start: 2012.07.15 @ 20:12:05

GENERAL INFORMATION:

Formation: **Cherokee**
Deviated: No Whipstock: ft (KB)
Test Type: Conventional Bottom Hole (Reset)
Time Tool Opened: 22:13:45 Tester: Mike Roberts
Time Test Ended: 01:48:44 Unit No.: 48
Interval: **4460.00 ft (KB) To 4485.00 ft (KB) (TVD)** Reference Elevations: 2896.00 ft (KB)
Total Depth: 4485.00 ft (KB) (TVD) 2891.00 ft (CF)
Hole Diameter: 7.88 inches Hole Condition: Fair KB to GR/CF: 5.00 ft

Serial #: 8373 **Inside**
Press@RunDepth: 18.63 psig @ 4461.00 ft (KB) Capacity: 8000.00 psig
Start Date: 2012.07.15 End Date: 2012.07.16 Last Calib.: 2012.07.16
Start Time: 20:12:05 End Time: 01:48:44 Time On Btm: 2012.07.15 @ 22:13:30
Time Off Btm: 2012.07.16 @ 00:16:15

TEST COMMENT: IF: Built to weak surface blow and died in 4 min
IS: No return blow
FF: No blow
FS: No return blow



PRESSURE SUMMARY

Time (Min.)	Pressure (psig)	Temp (deg F)	Annotation
0	2188.85	116.01	Initial Hydro-static
1	17.88	115.29	Open To Flow (1)
16	18.37	115.83	Shut-In(1)
61	156.93	116.69	End Shut-In(1)
62	17.57	116.62	Open To Flow (2)
76	18.63	116.92	Shut-In(2)
121	155.55	118.03	End Shut-In(2)
123	2138.86	118.97	Final Hydro-static

Recovery

Length (ft)	Description	Volume (bbl)
5.00	Mud 100%m	0.02

Gas Rates

	Choke (inches)	Pressure (psig)	Gas Rate (Mcf/d)

* Recovery from multiple tests



**TRILOBITE
TESTING, INC.**

DRILL STEM TEST REPORT

Pioneer Resources
80 Windmill Dr.
Phillipsburg, KS 67661
ATTN: Charlie Sturdavant

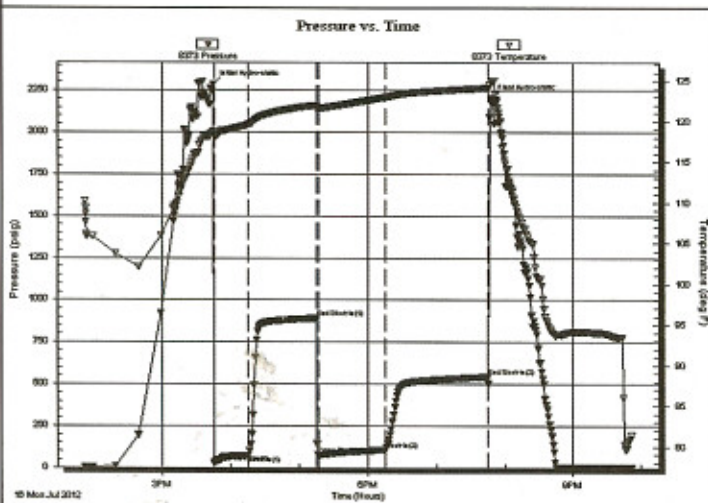
7-14s-31w Gove, KS
Rail Road #3
Job Ticket: 48399 **DST#: 5**
Test Start: 2012.07.16 @ 13:52:05

GENERAL INFORMATION:

Formation: **Morrow**
Deviated: No Whipstock: ft (KB)
Time Tool Opened: 15:45:15
Time Test Ended: 21:51:44
Test Type: Conventional Bottom Hole (Reset)
Tester: Mike Roberts
Unit No: 48
Interval: **4534.00 ft (KB) To 4581.00 ft (KB) (TVD)**
Reference Elevations: 2896.00 ft (KB)
Total Depth: 4581.00 ft (KB) (TVD) 2891.00 ft (CF)
Hole Diameter: 7.88 inches Hole Condition: Fair KB to GR/CF: 5.00 ft

Serial #: 8373 Inside
Press@RunDepth: 108.48 psig @ 4535.00 ft (KB) Capacity: 8000.00 psig
Start Date: 2012.07.16 End Date: 2012.07.16 Last Calib.: 2012.07.16
Start Time: 13:52:05 End Time: 21:51:44 Time On Btm: 2012.07.16 @ 15:44:45
Time Off Btm: 2012.07.16 @ 19:47:44

TEST COMMENT: IF:BOB in 26 min.
IS:Return blow built to weak surface blow and died in 7 min.
FF:BOB in 15 min.
FS:Retlow built to weak surface blow and died in 8 min.



PRESSURE SUMMARY

Time (Min.)	Pressure (psig)	Temp (deg F)	Annotation
0	2285.41	118.80	Initial Hydro-static
1	26.04	118.17	Open To Flow (1)
31	72.83	119.63	Shut-In(1)
91	892.24	122.03	End Shut-In(1)
93	76.92	121.66	Open To Flow (2)
151	108.48	123.00	Shut-In(2)
241	544.11	124.18	End Shut-In(2)
243	2206.42	125.07	Final Hydro-static

Recovery

Length (ft)	Description	Volume (bbl)
62.00	om 50%o 50%m	0.30
124.00	ocm 40%o 60%m	1.18
62.00	free oil 100%o	0.87
0.00	GP= 372	0.00

* Recovery from multiple tests

Gas Rates

	Choke (inches)	Pressure (psig)	Gas Rate (Mcf/d)