

5 10 15

H

LITHOLOGY

10 50 100 500

4600

Vis 45
Wt. 8.7
LCM 1#

CFS

50

4700

50

Vis 48
Wt. 9.0
LCM 1#

4800

Chert - wht, weathered to part trip
fair oil film, slt show free oil and
gas, faint odor, spty brn stain

Chert - wht-clr, weath and trip,
fair oil film, faint odor, spty brn
stain, spty bright fluor, pred
shale cavings

LS - wht-lt gr, fn xtltn to granular,
cherty in part, dense

LS/Dolo - lt gr-wht, fn xtltn to gran,
cherty w/ fair show oil film, scat
f-gd show free oil, faint odor, spty
brn stain, spty bright fluor

Dolo / LS - gr-brn, fn xtltn and gran,
dense, scat vitr chert, w/Sh - gr-blk

Dolo / LS - gr and brn, fn xtltn to
granular, scat gr-wht vitr chert and
Sh - gr-blk

Dolo / LS - gr-brn, fn xtltn and
granular, dense, w/ sh - gr-blk

Dolo / LS - gr-brn, fn xtltn, dense
w/ sh - gr-blk, scat gr-wht chert

11-07-12 - MIRT - RU

11-08-12 7:00 AM
Drill Rat Hole, start
washing down @ 8:30
AM Ran PDC Bit -
would not drill, run rock
bit
1st plug at 15'-50'
2nd plug at 215'-300'
3rd plug at 350'-500'

11-09-12 - 7:00 AM
3466' washing down
bit trip @ 4420' due to
out of gauge hole-run
rerun button bit
reached old RTD at
1:30 AM 11-10-12

11-10-12 7:00 AM
4604' CTCH and mix
displacement mud
Start displacement at
8 AM, trip for bit, run
PDC bit, had to wash
and ream back to
bottom, back on bottom
at 9:30 PM, CTCH and
drill ahead

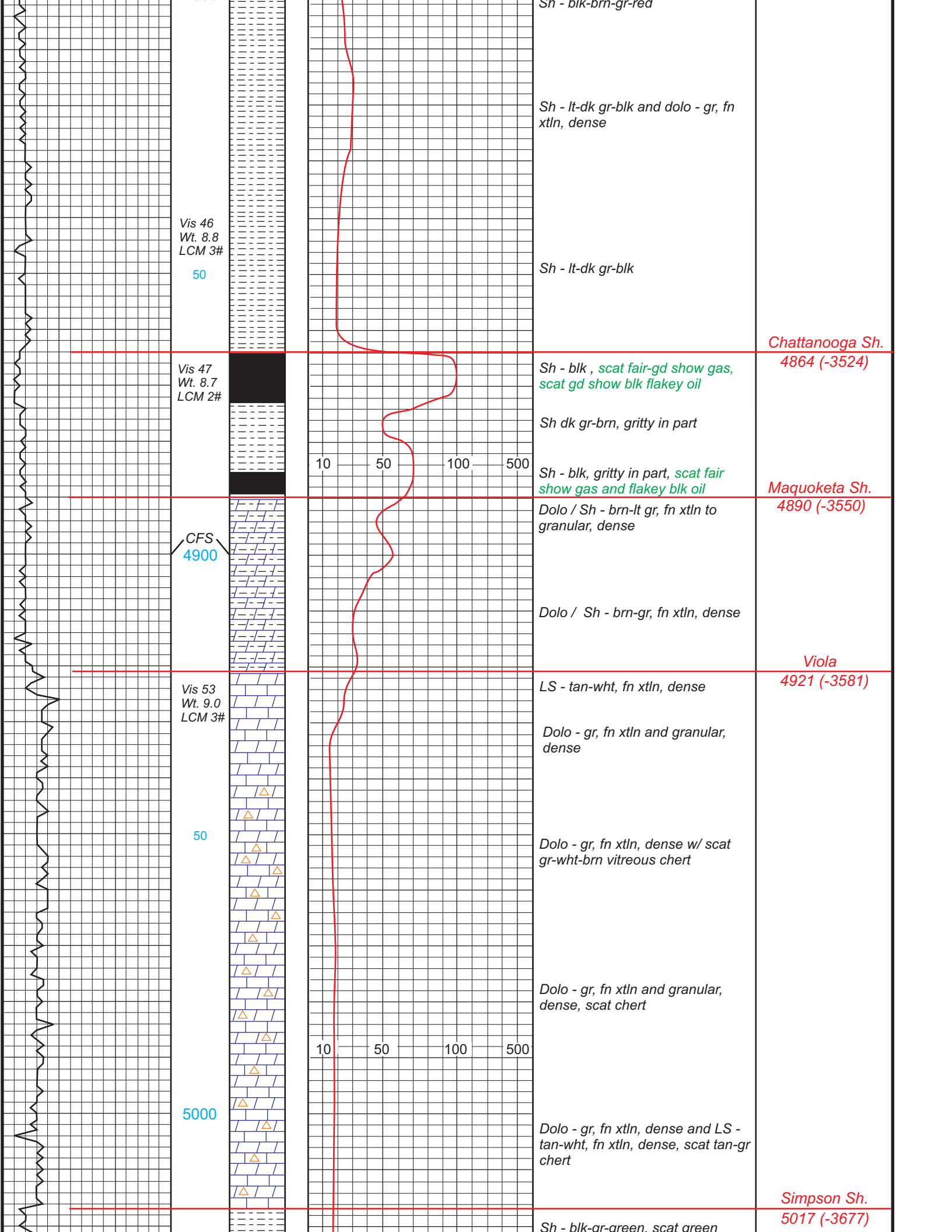
11-11-12 7:00 AM
drlg @ 4773'

11-12-12 7:00 AM
drlg @ 5265'
drill to 5293' and run
logs; LTD 5295'

11-13-12 7:00 AM
drlg @ 5439'

11-14-12 - 7:00 AM
drlg @ 5794'
RTD 5849' @ 12:30 PM

Kinderhook Sh.
4796 (-3456)

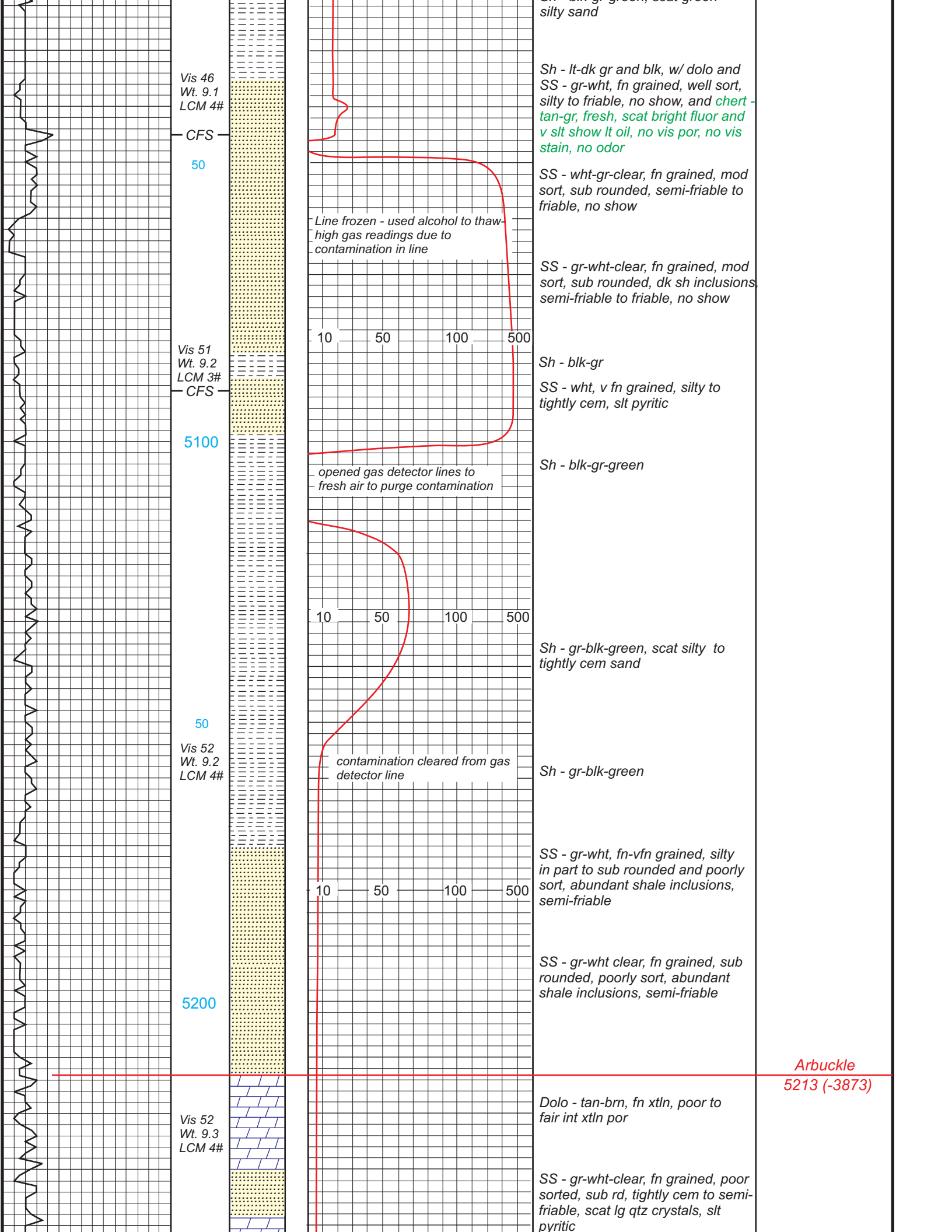


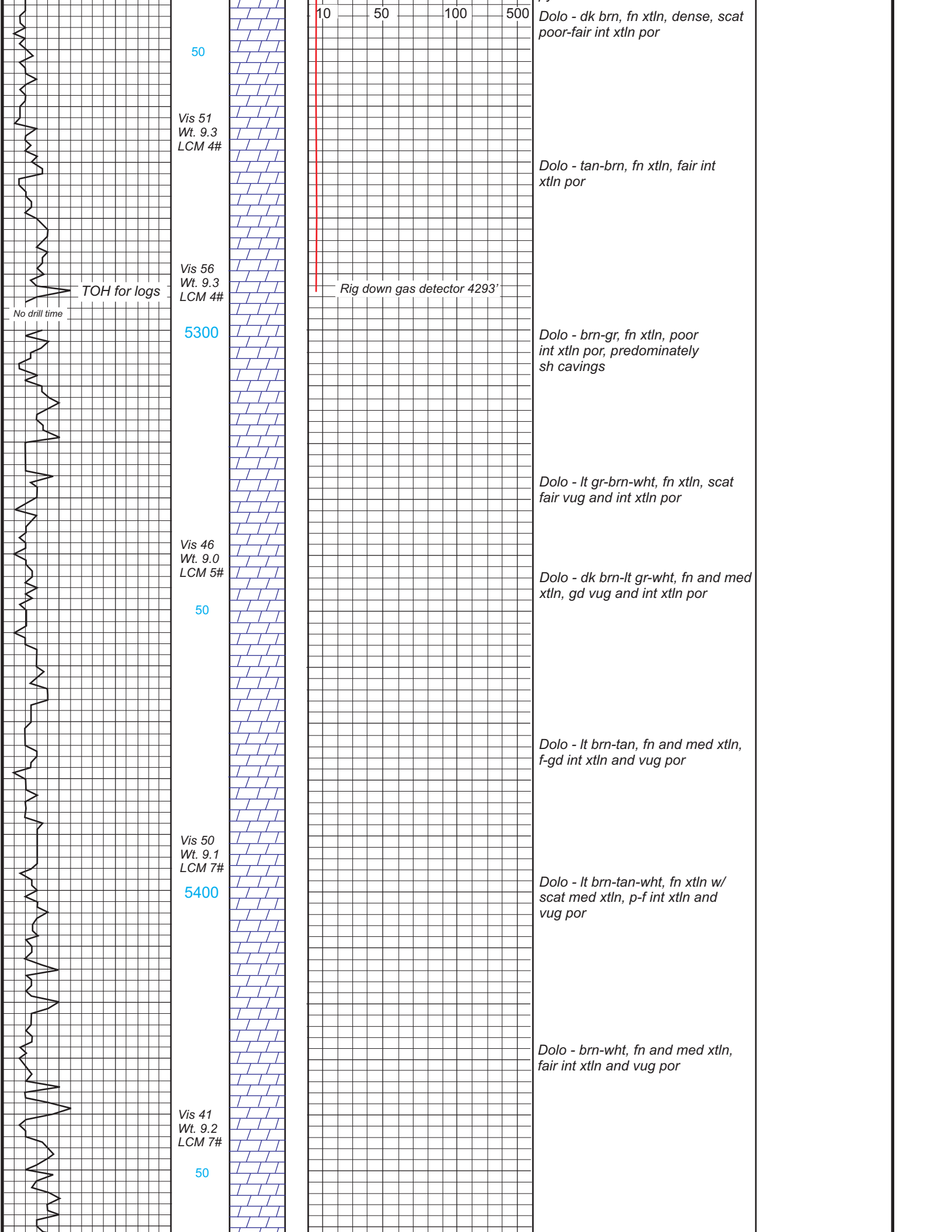
*Chattanooga Sh.
4864 (-3524)*

*Maquoketa Sh.
4890 (-3550)*

*Viola
4921 (-3581)*

*Simpson Sh.
5017 (-3677)*





50

Vis 51
Wt. 9.3
LCM 4#

*Dolo - dk brn, fn xtln, dense, scat
poor-fair int xtln por*

*Dolo - tan-brn, fn xtln, fair int
xtln por*

Vis 56
Wt. 9.3
LCM 4#

TOH for logs

No drill time

Rig down gas detector 4293'

5300

*Dolo - brn-gr, fn xtln, poor
int xtln por, predominately
sh cavings*

*Dolo - lt gr-brn-wht, fn xtln, scat
fair vug and int xtln por*

Vis 46
Wt. 9.0
LCM 5#

*Dolo - dk brn-lt gr-wht, fn and med
xtln, gd vug and int xtln por*

50

*Dolo - lt brn-tan, fn and med xtln,
f-gd int xtln and vug por*

Vis 50
Wt. 9.1
LCM 7#

5400

*Dolo - lt brn-tan-wht, fn xtln w/
scat med xtln, p-f int xtln and
vug por*

*Dolo - brn-wht, fn and med xtln,
fair int xtln and vug por*

Vis 41
Wt. 9.2
LCM 7#

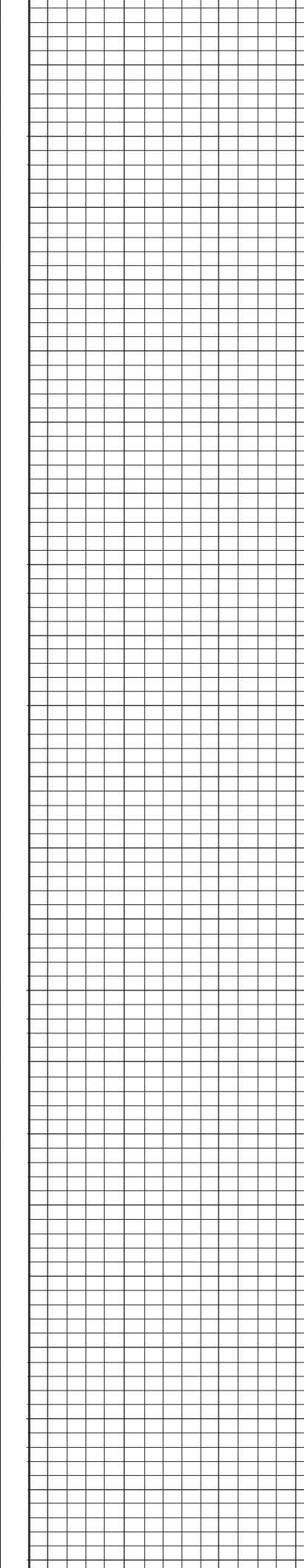
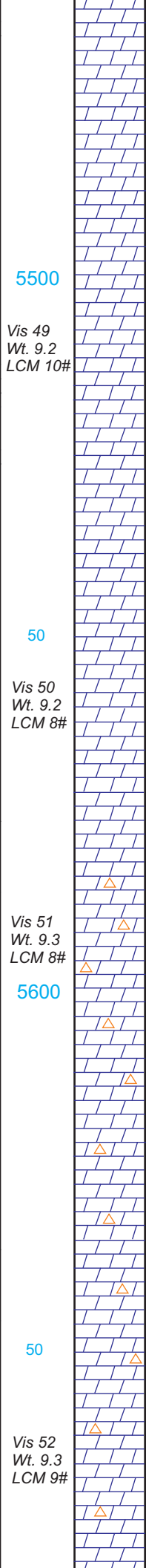
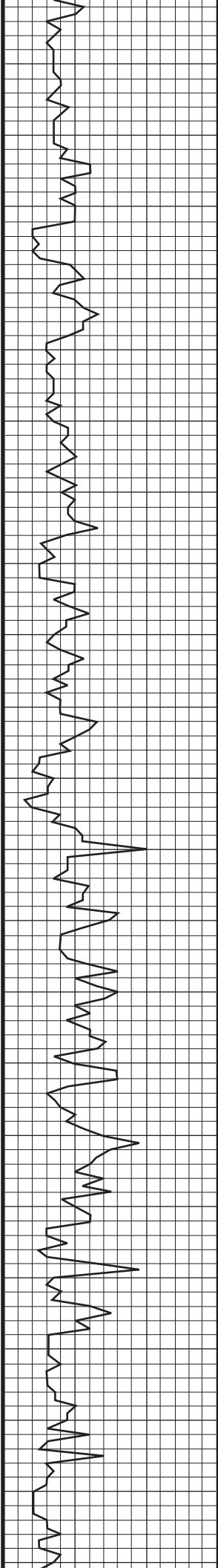
50

10

50

100

500



Dolo - dk brn-wht, fn xtln, scat med xtln, fair vug and int xtln por

Dolo - brn-tan-lt gr, fn and med xtln, some rhombic, gd vug and int xtln por

Dolo - tan-lt gr-wht, fn and med xtln, scat rhombic crystals, gd int xtln and vug por

Dolo - tan-brn-wht, fn and med xtln, poor-fair vug and int xtln por

Dolo - lt-dk brn, fn xtln, dense w/ scat med xtln, scat fair vug and int xtln por

Dolo - lt-dk brn fn-med xtln, slt int xtln por, w/ chert - wht, fresh, oolitic in part

Dolo - lt-dk brn-gr, fn xtln, poor int xtln por, w/ chert - wht, fresh, vitreous

Dolo - lt-dk brn, wht, fn xtln, scat poor int xtln por, scat vitreous chert, scat lg calcite crystals

Dolo - lt gr-wht, fn-med xtln, good int xtln and vug por, scat chert and calcite crystals

5500

Vis 49
Wt. 9.2
LCM 10#

50

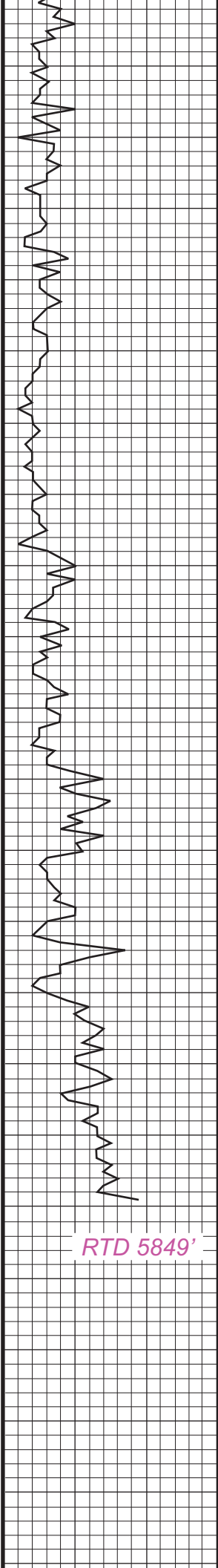
Vis 50
Wt. 9.2
LCM 8#

Vis 51
Wt. 9.3
LCM 8#

5600

50

Vis 52
Wt. 9.3
LCM 9#



5700

Vis 50
Wt. 9.3
LCM 8#

50

Vis 48
Wt. 9.3
LCM 8#

5800

Vis 43
Wt. 9.4
LCM 8#

50

RTD 5849'

Dolo - lt-dk brn-gr, fn-med xtln, f-gd vug and int xtln por, w/ chert - wht, fresh, angular

Dolo - lt-dk brn, fn and med xtln, gd vug and int xtln por, w/ chert - wht, fresh, vitreous, scat chalk

Dolo - lt-dk brn-wht, fn-med xtln, gd vug and int xtln por, and chert - wht, fresh, angular

Dolo - gr-brn-wht, fn and med xtln, gd vug and int xtln por, scat wht chert

Dolo - lt gr-wht-brn, fn-med xtln, gd vug and int xtln por, scat chert, scat lg calcite crystals

Dolo - tan-brn, fn-med xtln, scat fair vug and int xtln por, w/ chert - tan-wht, fresh and wht-clear calcite

Dolo - lt brn-tan, fn xtln, p-fair int xtln and vug por, scat wht chert and calcite

Dolo - lt brn-tan, fn xtln, slt vug and int xtln por, scat calcite xtls and fresh wht chert

