



TRILOBITE TESTING, INC.

DRILL STEM TEST REPORT

Woolsey Operating Co LLC

26 31s 17w Comanche

125 N Market Ste 1000
Wichita KS 67202-1729

Betty B Yost GU-B #2

Job Ticket: 48636

DST#: 2

ATTN: Scott Alberg

Test Start: 2012.10.30 @ 16:50:00

GENERAL INFORMATION:

Formation: **Miss**

Deviated: No Whipstock: 1983.00 ft (KB)

Time Tool Opened: 19:18:40

Time Test Ended: 02:31:00

Test Type: Conventional Bottom Hole (Reset)

Tester: Jim Svaty

Unit No: 41

Interval: 4928.00 ft (KB) To 4965.00 ft (KB) (TVD)

Reference Elevations: 1983.00 ft (KB)

Total Depth: 4965.00 ft (KB) (TVD)

1970.00 ft (CF)

Hole Diameter: 7.88 inches Hole Condition: Fair

KB to GR/CF: 13.00 ft

Serial #: 6752 Inside

Press @ Run Depth: 39.44 psig @ 4934.00 ft (KB)

Capacity: 8000.00 psig

Start Date: 2012.10.30

End Date:

2012.10.31

Last Calib.: 2012.10.31

Start Time: 16:50:01

End Time:

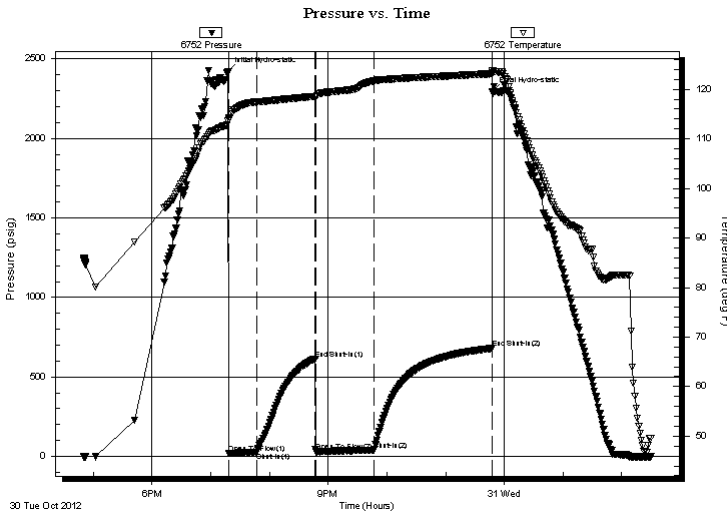
02:30:19

Time On Btm: 2012.10.30 @ 19:17:40

Time Off Btm: 2012.10.30 @ 23:48:00

TEST COMMENT: 30-IFP- BOB in 5min
60-ISIP- Surface Blow Building to 3 1/2in in 14min
60-FFP- BOB in 5sec
120-FSIP- No Blow

PRESSURE SUMMARY



Time (Min.)	Pressure (psig)	Temp (deg F)	Annotation
0	2417.27	113.70	Initial Hydro-static
1	17.95	113.97	Open To Flow (1)
30	27.12	117.43	Shut-In(1)
89	613.64	118.59	End Shut-In(1)
90	29.69	118.48	Open To Flow (2)
149	39.44	121.69	Shut-In(2)
270	679.92	123.15	End Shut-In(2)
271	2295.61	123.81	Final Hydro-static

Recovery

Length (ft)	Description	Volume (bbl)
62.00	MUD Show of Oil	0.87
0.00	1328 GIP	0.00

* Recovery from multiple tests

Gas Rates

	Choke (inches)	Pressure (psig)	Gas Rate (Mcf/d)



**TRILOBITE
TESTING, INC.**

DRILL STEM TEST REPORT

FLUID SUMMARY

Woolsey Operating Co LLC

26 31s 17w Comanche

125 N Market Ste 1000
Wichita KS 67202-1729

Betty B Yost GU-B #2

Job Ticket: 48636

DST#: 2

ATTN: Scott Alberg

Test Start: 2012.10.30 @ 16:50:00

Mud and Cushion Information

Mud Type: Gel Chem

Cushion Type:

Oil API:

deg API

Mud Weight: 9.00 lb/gal

Cushion Length:

ft

Water Salinity:

ppm

Viscosity: 47.00 sec/qt

Cushion Volume:

bbbl

Water Loss: 8.72 in³

Gas Cushion Type:

Resistivity: ohm.m

Gas Cushion Pressure:

psig

Salinity: 5000.00 ppm

Filter Cake: 2.00 inches

Recovery Information

Recovery Table

Length ft	Description	Volume bbl
62.00	MUD Show of Oil	0.870
0.00	1328 GIP	0.000

Total Length: 62.00 ft Total Volume: 0.870 bbl

Num Fluid Samples: 0

Num Gas Bombs: 0

Serial #:

Laboratory Name:

Laboratory Location:

Recovery Comments:

Pressure vs. Time

