



**Woolsey Operating Company, LLC**

Scale 1:240 (5"=100') Imperial

Measured Depth Log

**Well Name:** Betty Yost GU B-2  
**Location:** Approximate N/2 SE NE NW  
**License Number:** API: 15-033-21675-00-00  
**Spud Date:** October 23, 2012  
**Surface Coordinates:** Section 26-T32S-R17W, 940'FNL, 2310' FWL  
**Bottom Hole Coordinates:** Vertical Hole  
**Ground Elevation (ft):** 1970  
**Logged Interval (ft):** 4000 To: 5500  
**Formation:** Rotary Total Depth in Simpson Group  
**Type of Drilling Fluid:** Chemical Mud, Displace at 3337'.  
**Region:** Comanche County, Kansas  
**Drilling Completed:** November 2, 2012  
**K.B. Elevation (ft):** 1983  
**Total Depth (ft):** 5500

Printed by WellSight Log Viewer from WellSight Systems 1-800-447-1534 [www.WellSight.com](http://www.WellSight.com)

**OPERATOR**

**Company:** Woolsey Operating Company, LLC  
**Address:** 125 N. Market, Suite 1000  
Wichita, KS 67202

**GEOLOGIST**

**Name:** W. Scott Alberg  
**Company:** Alberg Petroleum, LLC  
**Address:** 609 Meadowlark Lane  
Pratt, Kansas 67124

## FORMATION TOPS

### SAMPLE TOPS

### LOG TOPS

HUSHPUCKNEY SHALE	4617(-2634)	4615(-2632)
B/KC	4718(-2735)	4715(-2732)
PAWNEE	4817(-2834)	4814(-2831)
CHEROKEE GROUP	4863(-2880)	4858(-2875)
MISSISSIPPIAN	4902(-2919)	4900(-2917)
KINDERHOOK SHALE	5228(-3245)	5229(-3246)
VIOLA	5238(-3255)	5240(-3257)
SIMPSON GROUP	5439(-3456)	5440(-3457)
SIMPSON SAND	5466(-3483)	5466(-3483)
RTD	5500(-3517)	
LTD		5498(-3515)

## COMMENTS

Surface Casing: Set 5 joints 10 3/4" at 217'(tallied 202') with 250 sxs Class A, 2% gel, 3% cc, plug down at 4:00 pm on October 23, 2012. Cement did Circulate.

Production Casing: 4 1/2" Casing Ran

Deviation Surveys: 1 - 221', 3/4 - 700', 1/4-1200', 3/4 - 1715', 1/2 - 2200', 1 - 2700, 1- 3171', 3/4 - 3676', 2 3/4? - 4212', 3/4 - 4306', 3/4- 4400', 1/2 - 4928', 1 - 5500'.

Contractor Bit Record:

- 1- 14 3/4" out at 221'.
- 2- 7 7/8" out at 4283'.
- 3 - 7 7/8" out at 4928'.
- 4 - 7 7/8" out at 5500'.

Pipe Strap at 4928', 2.75' Short to Board.

Gas Detector: Woolsey Operating Company, Trailer #1

Mud System: Mud Co, Brad Bortz, Engineer

DSTs: Trilobite Testing, 2 DST's Ran

Logged by Superior Well Services.

LTD - 5498'

## DSTs

### DST #1 4855 to 4928' Mississippi

Times 30-60-60-120

1st Opening - Surface blow built to 9 1/2"  
, 7 1/2" blow back?

2nd Opening - BOB 1 minute, no blow back

Recovery: 50' Drilling Mud.

IFP 29-39#    FFP 30-38#

ISIP 375#    FSIP 781#

IHP 2355#    Fhp 2241#

Temp 123

### DST #2 4928 to 4965' Mississippi

Times 30-60-60-120

1st Opening - Fair Blow built to BOB in 5 minutes, 3 1/2" blow back.

2nd Opening - Strong Blow, BOB 5 seconds, No Blow Back.

Recovery: 62' Drilling Mud, with slight show of Oil,  
1328' GIP

IFP 17-27#    FFP 29-39#

ISIP 613#    FSIP 679#

IHP 2417#    FHP 2295#

Temp 123

## CREWS

Ninnescah Drilling, Inc Rig #1


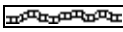
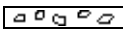
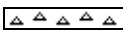
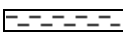

Tool Pusher - Rick Barriger







Drillers - Days - Jason Barriger


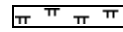

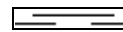


Evening - Jaun Navarro






Morning - Luz Torres

## ROCK TYPES

	Anhy
	Bent
	Brec
	Cht
	Clyst
	Coal

	Congl
	Sdy dolo
	Shy dolo
	Dol
	Gyp
	Sdy lmst

	Lmst
	Mrlst
	Salt
	Shale
	Sltst
	Ss

	Black sh
	Gry sh
	Shale
	Shyslts
	Sltys

**ACCESSORIES**

**MINERAL**

- Anhy
- Arg
- Bent
- Bit
- Brecfrag
- Calc
- Carb
- Chtdk
- Chtlt
- Dol
- Ferrpel
- Ferr
- Glau
- Gyp
- Marl
- Nodule
- Phos
- Pyr
- Salt
- Sandy
- Silt

- Chlorite
- Dol
- Sand
- Slty

**FOSSIL**

- Algae
- Amph
- Belm
- Bioclst
- Brach
- Bryozoa
- Cephal
- Coral
- Crin
- Echin
- Fish
- Foram
- Fossil
- Gastro
- Oolite
- Ostra

- Pelec
- Pellet
- Pisolite
- Plant
- Strom
- Fuss
- Oomoldic

**STRINGER**

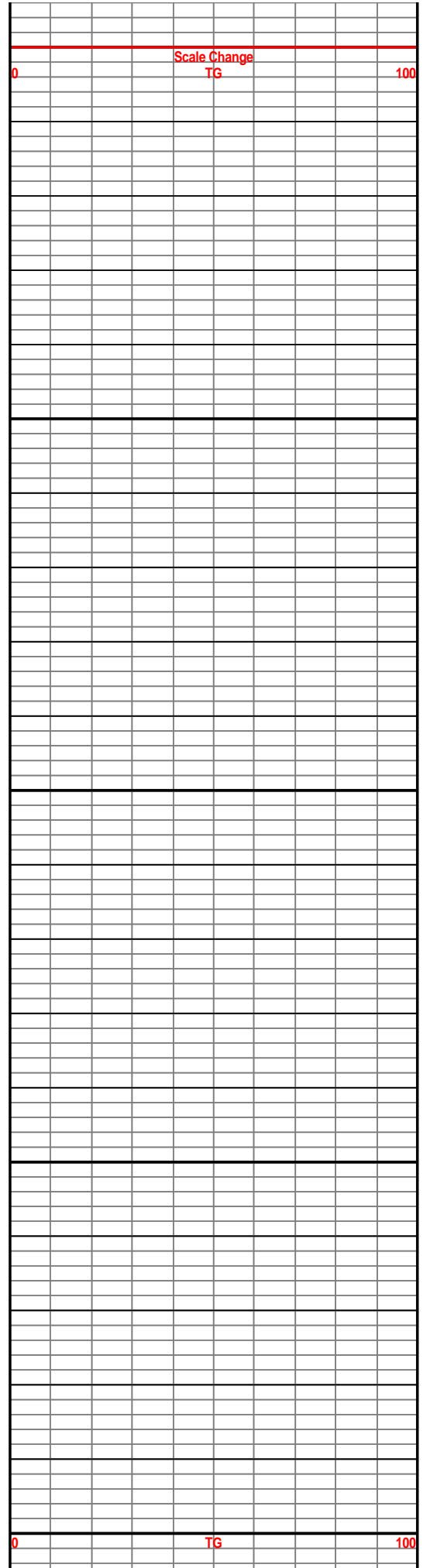
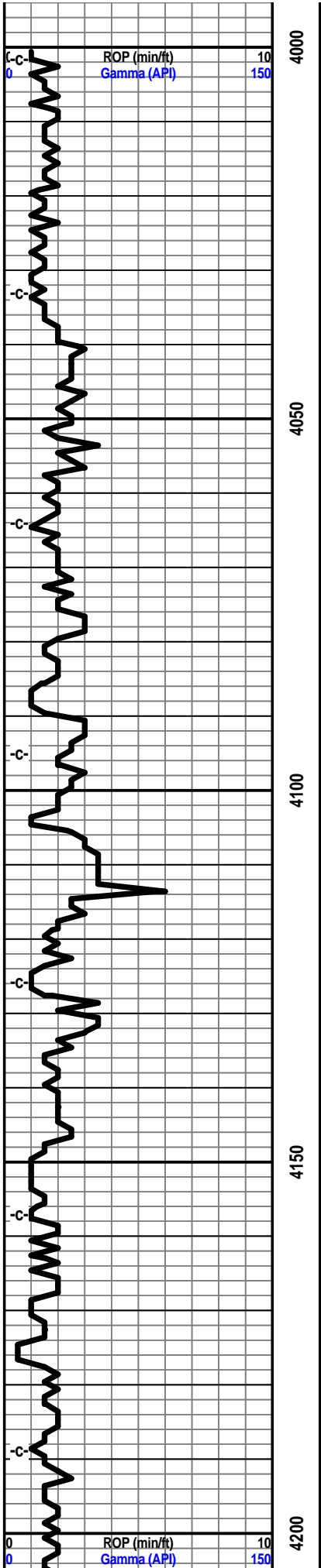
- Anhy
- Arg
- Bent
- Coal
- Dol
- Gyp
- Ls
- Mrst
- Slststrg
- Ssstrg
- Carbsh
- Clystn
- Dol

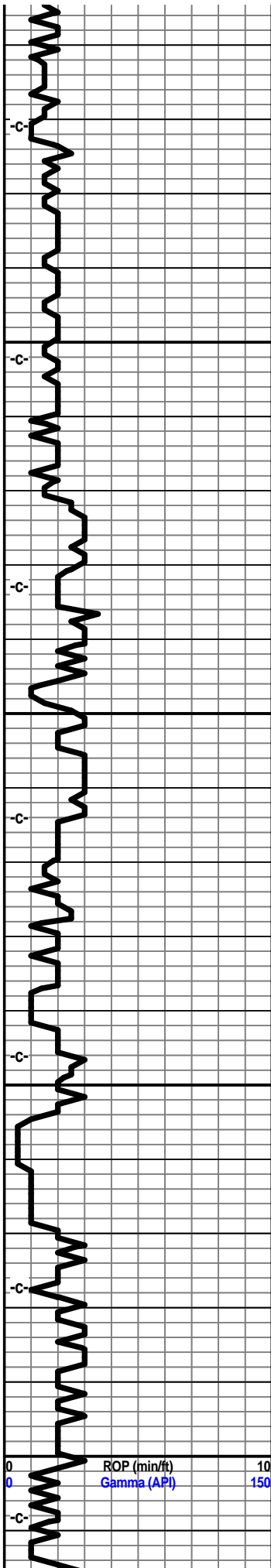
- Grysh
- Gryslt
- Lms
- Sandylms
- Sh
- Slststn

**TEXTURE**

- Boundst
- Chalky
- Cryxln
- Earthy
- Finexln
- Grainst
- Lithogr
- Microxln
- Mudst
- Packst
- Wackest

Curve Track 1			Depth	Lithology	Oil Shows	Geological Descriptions	TG, C1-C5			
ROP (min/ft)	Gamma (API)	TG (units)					C1 (units)	C2 (units)	C3 (units)	C4 (units)
0	10	39	3950			October 22, 2012 MIRT	0	200		
0	150							October 23, 2012 Spud @ 7:00 am		
								October 24, 2012 520' @ 7:00 am		
								October 25, 2012 1945' @ 7:00 am		
								October 26, 2012 2845' @ 7:00 am		
								October 27, 2012 3717' @ 7:00 am		
								October 28, 2012 4370' @ 7:00 am		
								October 29, 2012 4835' @ 7:00 am		
								October 30, 2012 4928' @ 7:00 am		
								October 31, 2012 4965' @ 7:00 am		
					November 1, 2012 5275' @ 7:00 am					
					November 2, 2012 5500' @ 7:00 am					





4250

4300

4350

4400

Survey @ 4212'  
2 3/4 degrees ??

Survey @ 4306'  
3/4 degree

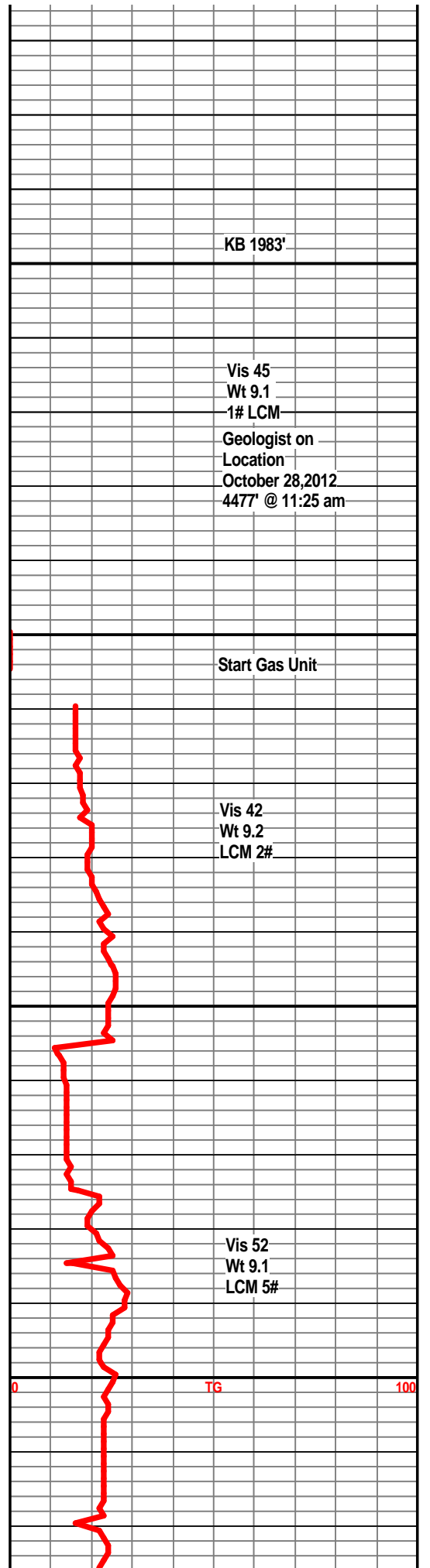
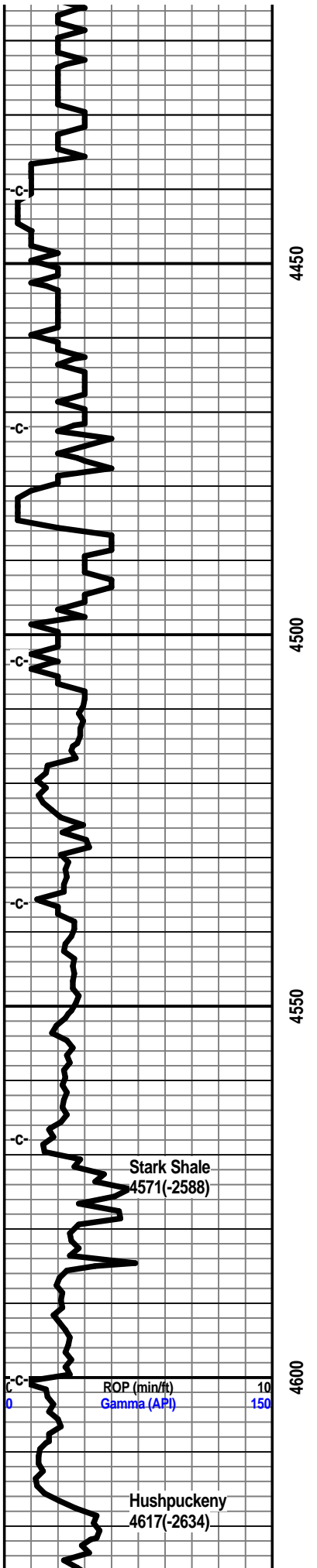
Lost 20 BBI Fluid  
at 4346'.

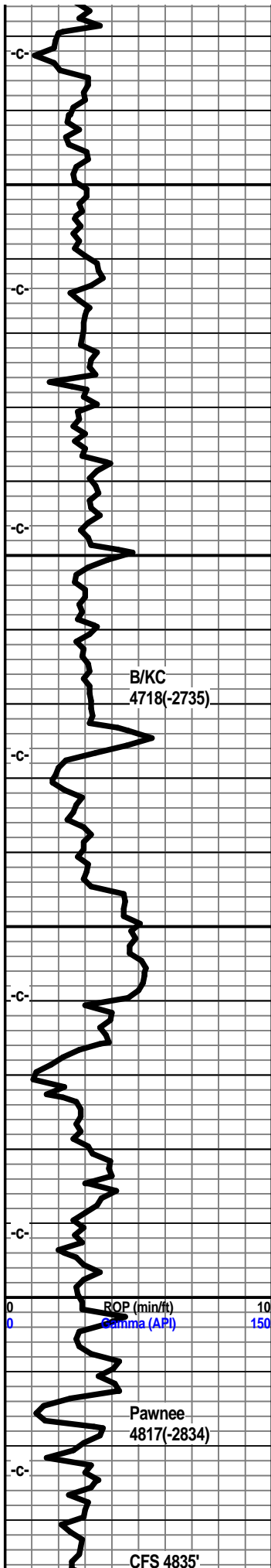
Mud Co Mud  
Check  
October 28, 2012  
4378' @ 7:45 am  
Vis 45  
Wt 9.2  
pH 10.0  
WL 8.8  
Chl 5000  
LCM 1#

Vis 43  
Wt 9.0  
LCM 1#

Survey @ 4400'  
3/4 degree

0 TG 100





Shale, grey-black, slightly carb.

Limestone, tan-white, tan, fxln, dense, trace fossils, subchalky in part.

Shale, grey, dark grey.

Limestone, tan-white, xln, dense, trace fossils.

Shale, grey.  
Limestone, tan-white, tan, xln, dense, shaley in part.

Shale, grey, grey-green, limestone frags, slightly calcitic in part.

Limestone, tan, buff-white, xln, dense, trace fossils, very slightly chalky.

Shale, grey-green, dark green, firm, slightly calcitic in part, some ls frags..

Limestone, cream-white, fxln, dense, slightly chalky, mineral fluor, no visible shows.

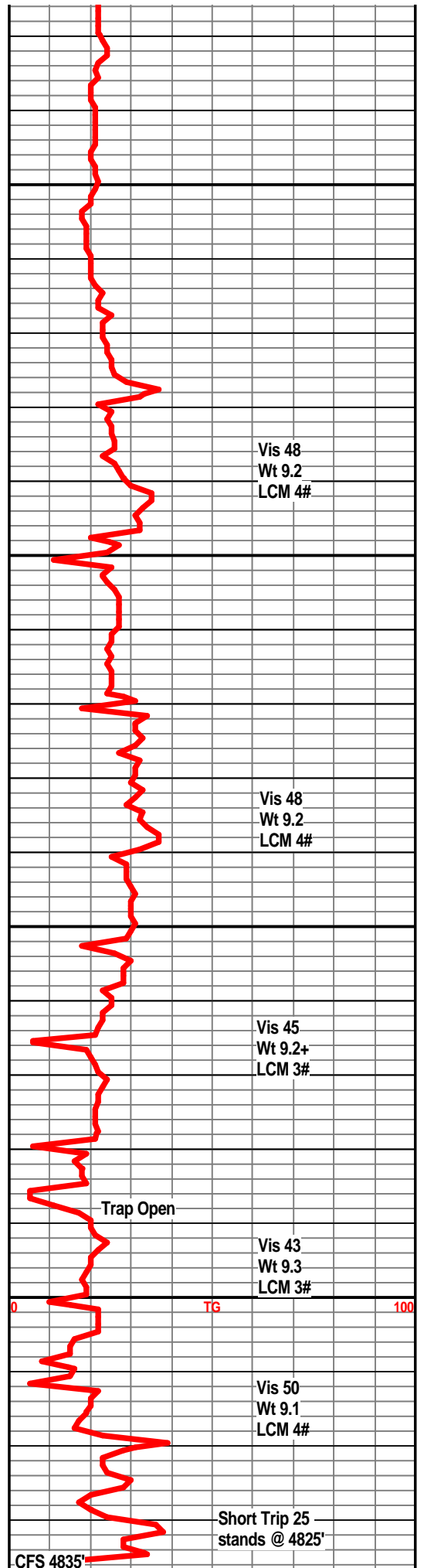
Shale, grey, light grey.

Limestone, buff-white, fxln, dense, traces of fossils, subchalky, traces of tan to translucent chert, no visible shows.

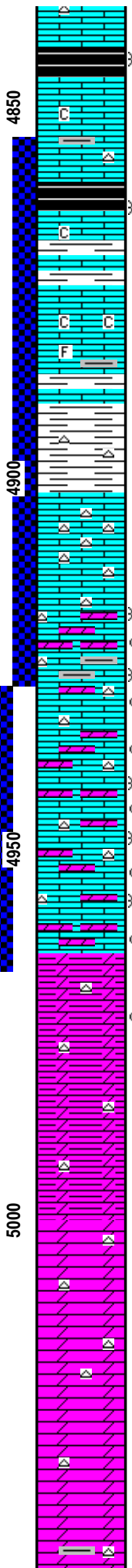
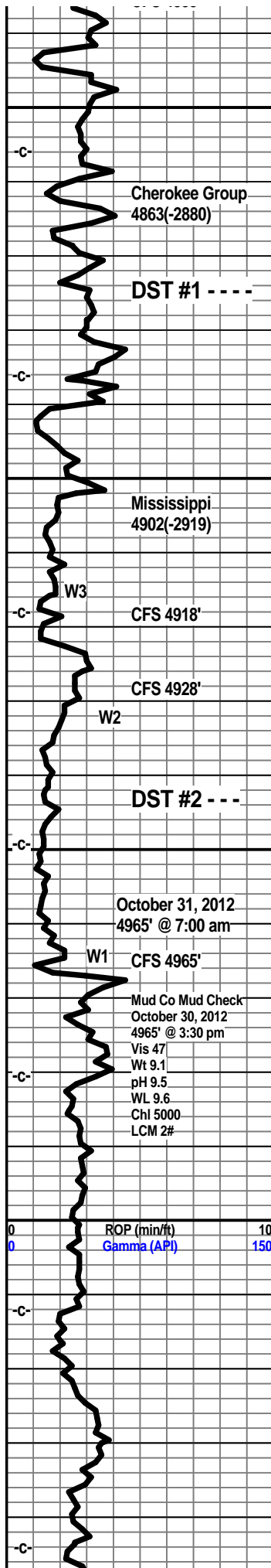
Limestone, tan-white, buff, xln, dense, trace chert, subchalky in part.

Shale grey-black.

Limestone, cream, tan-white, fxln, trace of xln porosity, mostly dense, poor porosity, no visible shows, no odor, dull mineral fluor., possible slight gas indication.







Shale, grey-black, slightly carb.

Limestone, tan, tan-white, xln, dense, subchalky, trace chert. (Cavings from short trip.)

Shale, grey-black.

Limestone, cream-white, buff, xln, dense, interbedded grey-green shales.

Limestone, tan-white, tan, buff, xln, dense, subchalky, trace chert, trace fossils, some interbedded shales.

Shale, green-grey, some vari colored, some orange chert.

Limestone, crm-white, xln, very cherty, white to translucent chert, some light staining, no odor, very light scattered edge fluor on very few rocks.

Limestone, cream, tan, xln, white to off-white trans chert, light show of oil under uv, very faint fleating odor, trace pp porosity, slight show gas.

30 - Limestone, tan, translucent to off-white cherts, trace pp porosity, scattered light staining, very slight show free oil, scattered spotted bright fluor., questionable odor, abundant shales.

60- Limestone, very dolomitic, tan, traces of pp to xln porosity, fair bright fluor, trans to off-white cherts, light brown scattered staining, very faint odor, trace free oil.

Limestone, cream-tan, very dolo in part, xln, tan to trans foss. cherts, very light scattered staining, scattered bright edge fluor, faint odor, gas indication, slight show free oil, traces of xln porosity.

30 - Limestone, dolomite, cream to light tan, xln, scattered light staining, traces xln porosity, poor to fair odor, scattered bright fluor, abundant sharp trrans to tan, blue grey foss chert with some weathered edge porosity.

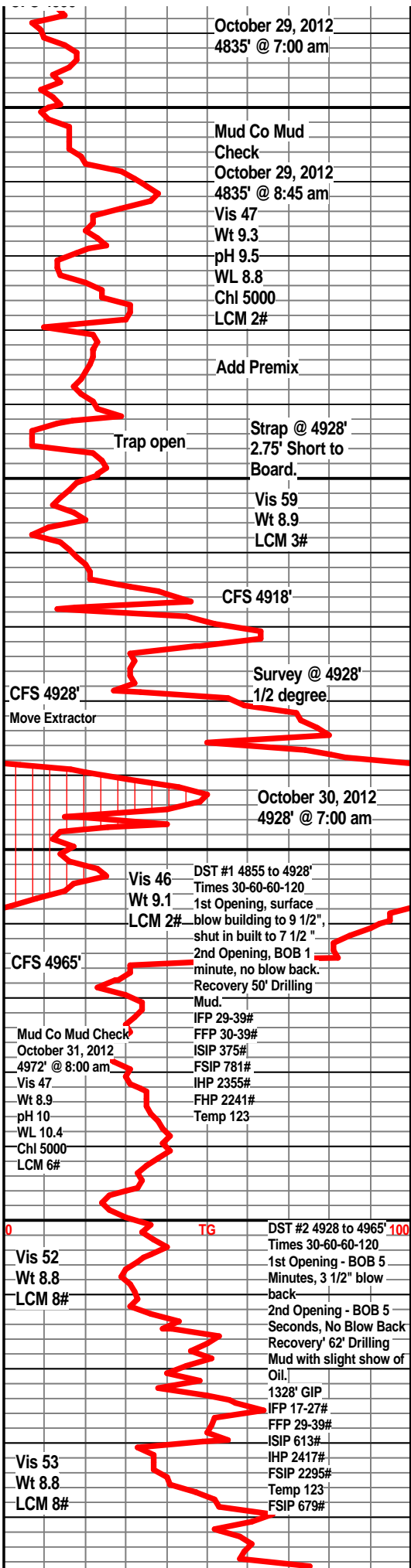
60 - a/a, traces of grey dolo, shows remained similar to above, good bright fluor.

Dolo, light grey, xln, dense, traces of chert, very slight staining, no odor. Poor samples - cavings.

Dolo, light grey to tan, xln, dense, traces of off-white sharp chert, some grey green shales. Samples better.

Dolo, tan, light grey, xln, dense, traces of tan to off-white sharp chert, no visible shows.

Dolo, tan-grey, xln, dense, traces of chert, no visible shows.



October 29, 2012  
4835' @ 7:00 am

Mud Co Mud Check  
October 29, 2012  
4835' @ 8:45 am  
Vis 47  
Wt 9.3  
pH 9.5  
WL 8.8  
Chl 5000  
LCM 2#

Add Premix

Trap open  
Strap @ 4928'  
2.75' Short to Board.

Vis 59  
Wt 8.9  
LCM 3#

CFS 4918'

Survey @ 4928'  
1/2 degree

CFS 4928'  
Move Extractor

October 30, 2012  
4928' @ 7:00 am

Vis 46  
Wt 9.1  
LCM 2#

DST #1 4855 to 4928'  
Times 30-60-60-120  
1st Opening, surface  
blow building to 9 1/2",  
shut in built to 7 1/2"

CFS 4965'

2nd Opening, BOB 1  
minute, no blow back.  
Recovery 50' Drilling  
Mud.  
IFP 29-39#  
FFP 30-39#  
ISIP 375#  
FSIP 781#  
IHP 2355#  
FHP 2241#  
Temp 123

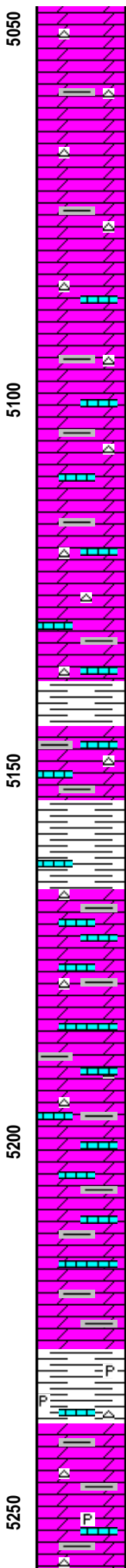
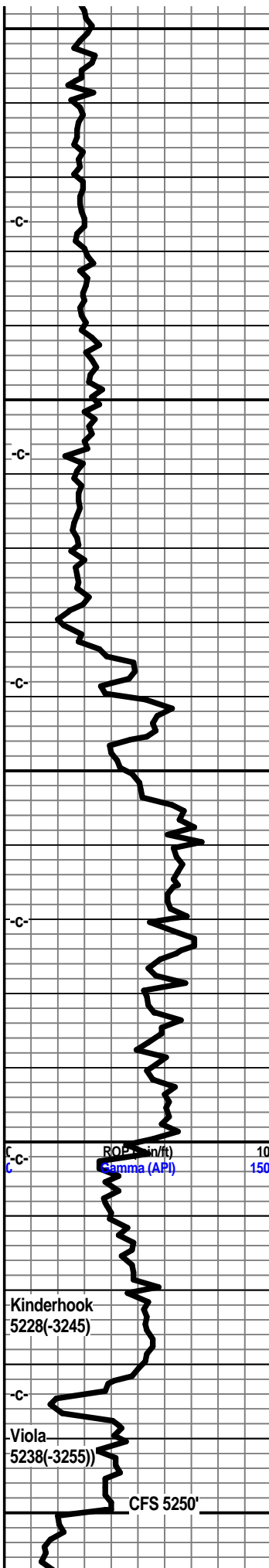
Mud Co Mud Check  
October 31, 2012  
4972' @ 8:00 am  
Vis 47  
Wt 8.9  
pH 10  
WL 10.4  
Chl 5000  
LCM 6#

DST #2 4928 to 4965' 100  
Times 30-60-60-120  
1st Opening - BOB 5  
Minutes, 3 1/2" blow  
back  
2nd Opening - BOB 5  
Seconds, No Blow Back  
Recovery 62' Drilling  
Mud with slight show of  
Oil.

Vis 52  
Wt 8.8  
LCM 8#

Vis 53  
Wt 8.8  
LCM 8#

1328' GIP  
IFP 17-27#  
FFP 29-39#  
ISIP 613#  
IHP 2417#  
FSIP 2295#  
Temp 123  
FSIP 679#



Dolo, tan-grey, xln, dense, traces of chert, trace grey-green shale.

Dolo, tan, light tan, xln, dense, tan sharp chert, some grey-green shales.

Dolo, tan, light grey, xln, succ, dense, ls frags, grey-green shale, trans to opaque foss cherts.

Dolo, light grey, tan, xln, succ, traces of tan to trans chert, some crm ls frags, no visible shows.

Dolo, light grey, tan, xln, succ, traces off-white cherts, grey-green shales, some ls frags.

Dolo, tan, light grey, xln, dense, traces of reddish orange cherts, off-white cherts, ls frags, green shales.

Dolo, tan, cream-light grey, succ in part, xln, dense, cherts, ls frags, green shales.

Shale, green, grey, dolo frags, ls frags.

Dolo, cream-tan, xln, dense, cream ls frags, dense, glauc, white cherts, grey-green shales.

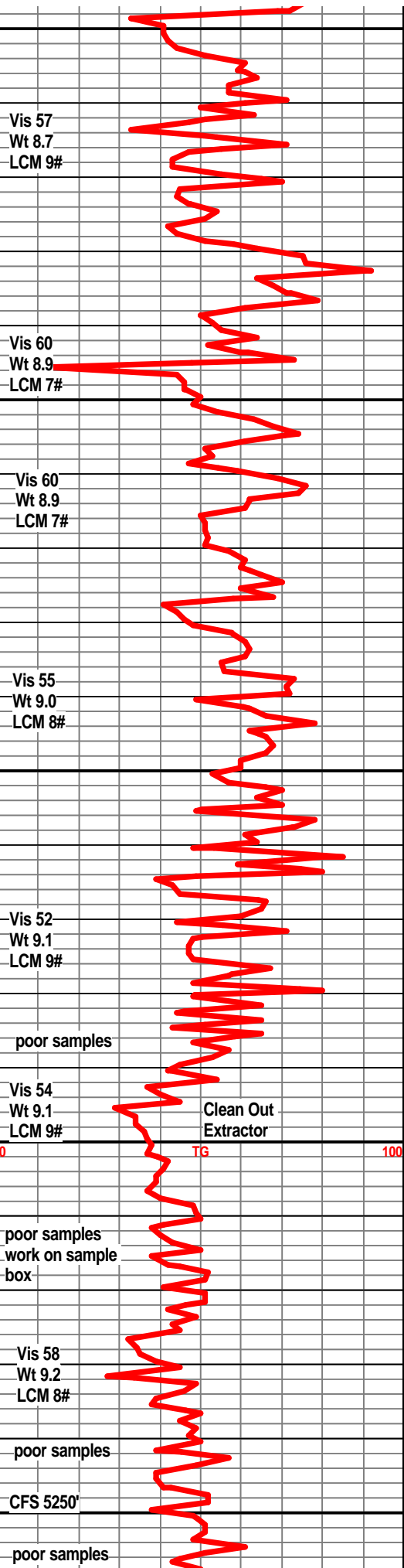
Dolo, grey-white, cream, xln, dense, traces off-white to trans cherts, grey green splintery shales, ls frags.

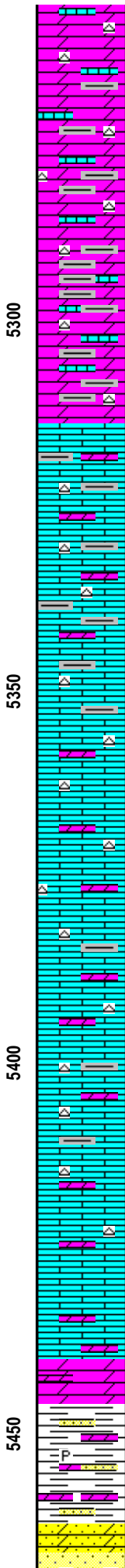
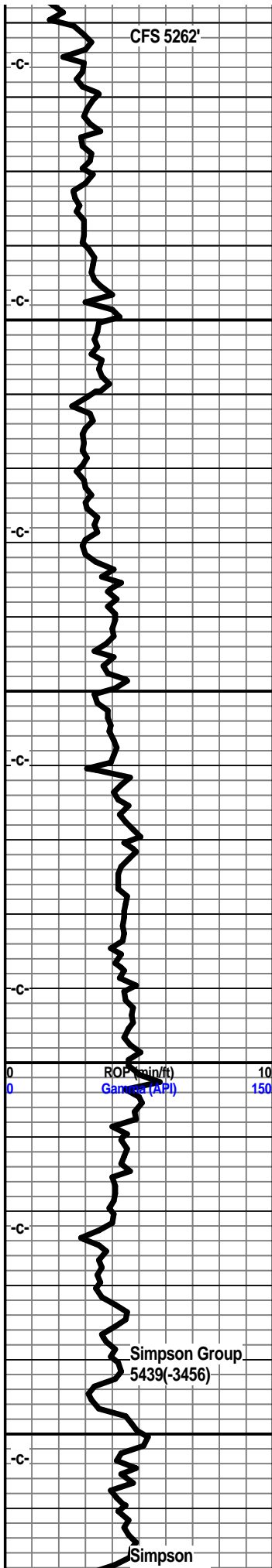
Dolo, grey, light grey, ls frags, grey shales, trans to tan cherts, very poor samples

Shale, grey, splintery, dolo frags, ls frags. Poor samples.

Dolo, light tan, grey, chalky ls frags, fossils, foss cherts, some questionable stain, mineral fluor, traces of glauc., poor overall samples. Abundant shales.

Dolo, tan, light grey, xln, dense, trace of cream





foss ls, pp porosity, traces of xln porosity, trace mineral fluor, foss chert, questionable dark asphaltic stain, no odor, no gas indication. Poor samples, abundant shales.

Dolo, tan, light grey, xln, dense, blue grey sharp cherts, some tan cherts, foss ls frags, grey shales, no fluor, no odor, no visible shows. poor samples.

Mostly shales.

Shales, poor samples.

Limestone, cream, tan, fxln, dense, tan sharp chert, abundant shales, very poor samples.

Poor samples

Limestone, tan, tan-white, fxln, dense, tan sharp cherts, slightly dolo in part.

Limestone, tan, tan-white, fxln, grainy texture, slightly dolo in part, tan sharp chert, pale blue green shales, slightly pyritic.

Limestone, tan, buff, tan-brown, slightly dolo in part, fxln, dense, grainy, tan sharp cherts, trace chalky ls, some pale green pyritic shales.

Limestone, tan, buff, fxln, dolomitic in part, tan chert, sharp, trace of pale green shale, slightly pyritic.

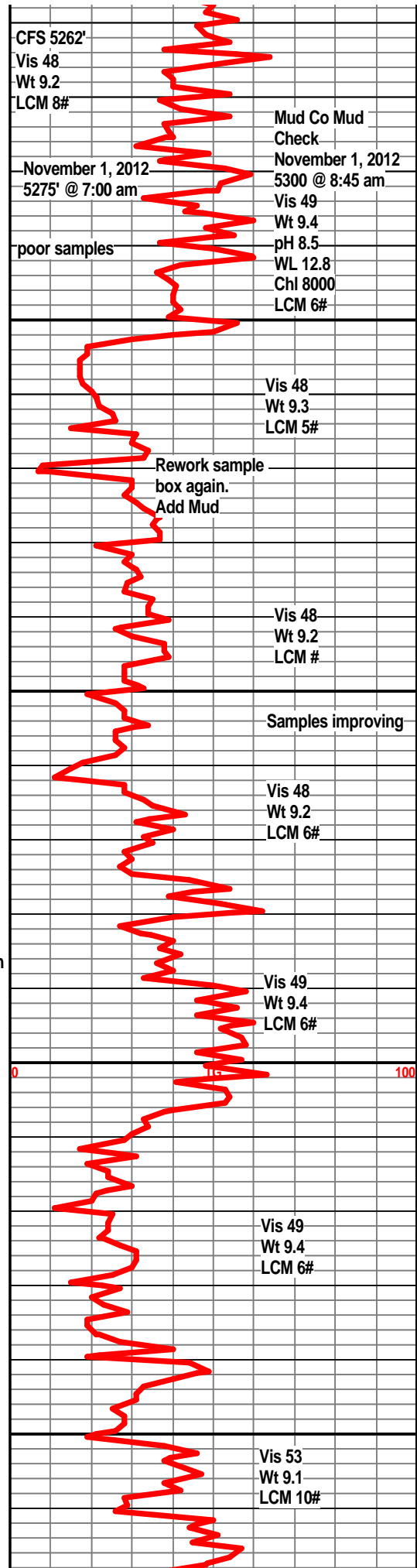
Limestone, tan, buff-tan, xln, dense, grainy, cherty in part, dolomitic, trace chalky ls. pael green shales.

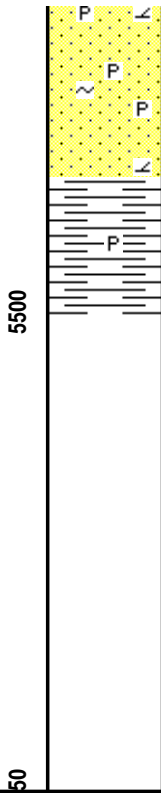
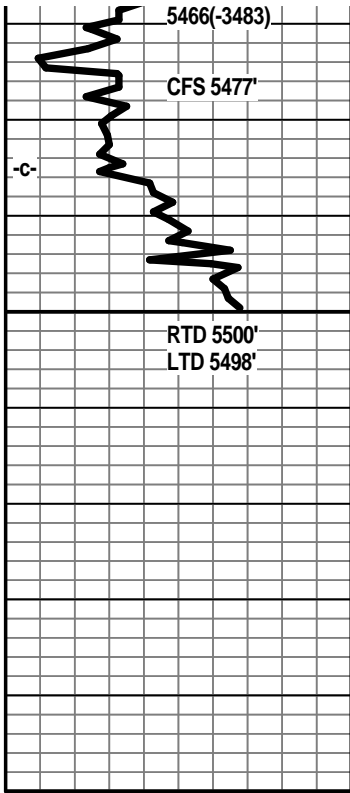
Dolo, tan-grey, xln, succ, pale green shales.

Dolo, grey-white, coarse grained, friable in part, slightly pyritic.

Shale, teal green, pyritic, dolomic stringers, some sand clusters.

Sandstone clear to white frosted fair sorting





Sandstone, clear to white, friable, fair sorting, friable in part, trace of pyrite, shale inclusions, no visible shows, no odor.

Sandstone, clear to grey-white, dolo in part, SA, fair sorting, some well cemented, trace friable, pyritic, shale inclusions, no visible shows, no odor., no fluor.

Shale, dark tal green, firm, sand stringers, traces of pyrite.

