



TRILOBITE TESTING, INC.

DRILL STEM TEST REPORT

Samuel Gary Jr. & Associates, Inc.

S32-14s-17w Ellis, KS

1515 Wynkoop
Ste. 700
Denver, CO 80202
ATTN: Christopher Mitchell

Leiker - Gross 1-32

Job Ticket: 48485 **DST#: 2**
Test Start: 2012.11.06 @ 18:45:00

GENERAL INFORMATION:

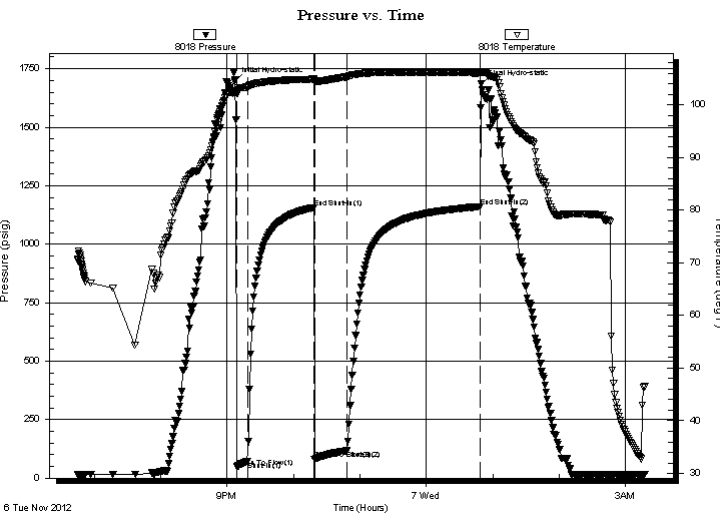
Formation: **LKC 'I-J'**
 Deviated: No Whipstock: ft (KB) Test Type: Conventional Straddle (Reset)
 Time Tool Opened: 21:08:45 Tester: Chuck Smith
 Time Test Ended: 03:18:00 Unit No: 62
 Interval: **3360.00 ft (KB) To 3400.00 ft (KB) (TVD)** Reference Elevations: 1940.00 ft (KB)
 Total Depth: 3610.00 ft (KB) (TVD) 1930.00 ft (CF)
 Hole Diameter: 7.88 inches Hole Condition: Good KB to GR/CF: 10.00 ft

Serial #: 8018

Outside

Press @ Run Depth: 117.50 psig @ 3364.00 ft (KB) Capacity: 8000.00 psig
 Start Date: 2012.11.06 End Date: 2012.11.07 Last Calib.: 2012.11.07
 Start Time: 18:45:05 End Time: 03:18:00 Time On Btm: 2012.11.06 @ 21:06:45
 Time Off Btm: 2012.11.07 @ 00:49:45

TEST COMMENT: 10" Blow.
 Weak surface return died @ 10 min.
 B.O.B. @ 12 1/2 min.
 5" Return.



PRESSURE SUMMARY

Time (Min.)	Pressure (psig)	Temp (deg F)	Annotation
0	1694.66	102.47	Initial Hydro-static
2	47.84	102.16	Open To Flow (1)
12	72.32	103.43	Shut-In(1)
72	1156.85	104.90	End Shut-In(1)
73	80.48	104.54	Open To Flow (2)
102	117.50	105.36	Shut-In(2)
222	1160.68	106.08	End Shut-In(2)
223	1684.17	106.13	Final Hydro-static

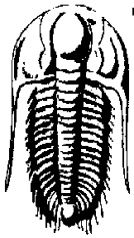
Recovery

Length (ft)	Description	Volume (bbl)
0.00	RW: .147 @ 29 Degrees F = 150000	PP0.00
125.00	MW 50m 50w	1.75
55.00	OCM 17o 83m	0.77
0.00	190' GIP	0.00

* Recovery from multiple tests

Gas Rates

	Choke (inches)	Pressure (psig)	Gas Rate (m ³ /d)



TRILOBITE TESTING, INC.

DRILL STEM TEST REPORT

Samuel Gary Jr. & Associates, Inc.

S32-14s-17w Ellis, KS

1515 Wynkoop
Ste. 700
Denver, CO 80202
ATTN: Christopher Mitchell

Leiker - Gross 1-32

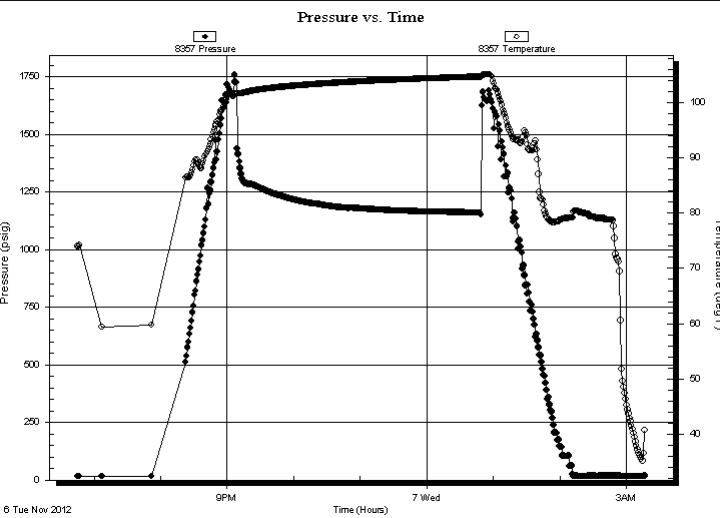
Job Ticket: 48485 **DST#: 2**
Test Start: 2012.11.06 @ 18:45:00

GENERAL INFORMATION:

Formation: LKC 'I-J'		
Deviated: No Whipstock:	ft (KB)	Test Type: Conventional Straddle (Reset)
Time Tool Opened: 21:08:45		Tester: Chuck Smith
Time Test Ended: 03:18:00		Unit No: 62
Interval: 3360.00 ft (KB) To 3400.00 ft (KB) (TVD)		Reference Elevations: 1940.00 ft (KB)
Total Depth: 3610.00 ft (KB) (TVD)		1930.00 ft (CF)
Hole Diameter: 7.88 inches	Hole Condition: Good	KB to GR/CF: 10.00 ft

Serial #: 8357	Below (Straddle)		
Press @ Run Depth:	psig @ 3417.00 ft (KB)	Capacity:	8000.00 psig
Start Date:	2012.11.06	End Date:	2012.11.07
Start Time:	18:45:11	End Time:	03:16:33
		Time On Btm:	
		Time Off Btm:	

TEST COMMENT: 10" Blow.
Weak surface return died @ 10 min.
B.O.B. @ 12 1/2 min.
5" Return.



PRESSURE SUMMARY

Time (Min.)	Pressure (psig)	Temp (deg F)	Annotation

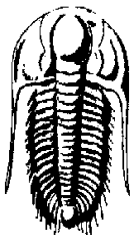
Recovery

Length (ft)	Description	Volume (bbl)
0.00	RW: .147 @ 29 Degrees F = 150000	PP0.00
125.00	MW 50m 50w	1.75
55.00	OCM 17o 83m	0.77
0.00	190' GIP	0.00

* Recovery from multiple tests

Gas Rates

	Choke (inches)	Pressure (psig)	Gas Rate (m³/d)



TRILOBITE
TESTING, INC.

DRILL STEM TEST REPORT

Samuel Gary Jr. & Associates, Inc.

S32-14s-17w Ellis, KS

1515 Wynkoop
Ste. 700
Denver, CO 80202
ATTN: Christopher Mitchell

Leiker - Gross 1-32

Job Ticket: 48485

DST#: 2

Test Start: 2012.11.06 @ 18:45:00

GENERAL INFORMATION:

Formation: **LKC 'I-J'**

Deviated: No Whipstock: ft (KB)

Time Tool Opened: 21:08:45

Time Test Ended: 03:18:00

Test Type: Conventional Straddle (Reset)

Tester: Chuck Smith

Unit No: 62

Interval: 3360.00 ft (KB) To 3400.00 ft (KB) (TVD)

Reference Elevations: 1940.00 ft (KB)

Total Depth: 3610.00 ft (KB) (TVD)

1930.00 ft (CF)

Hole Diameter: 7.88 inches Hole Condition: Good

KB to GR/CF: 10.00 ft

Serial #: 6751

Fluid

Press @ RunDepth: psig @ 3326.50 ft (KB)

Capacity: 8000.00 psig

Start Date: 2012.11.06

End Date: 2012.11.07

Last Calib.: 2012.11.07

Start Time: 18:45:05

End Time: 03:27:48

Time On Btm:

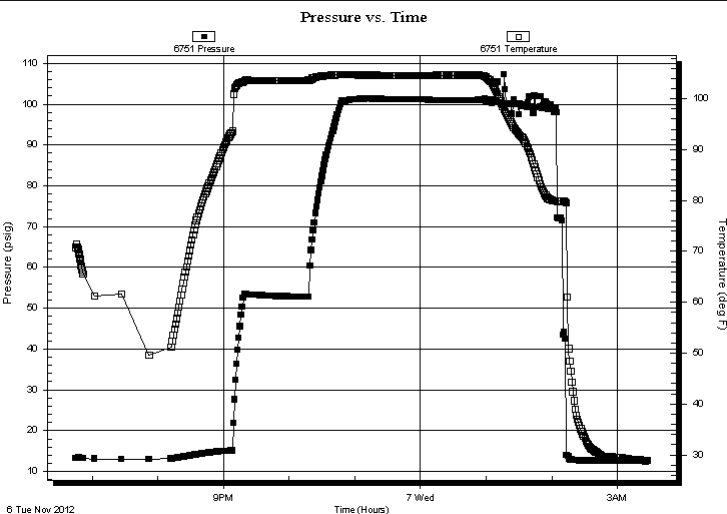
Time Off Btm:

TEST COMMENT: 10" Blow.

Weak surface return died @ 10 min.

B.O.B. @ 12 1/2 min.

5" Return.



PRESSURE SUMMARY

Time (Min.)	Pressure (psig)	Temp (deg F)	Annotation

Recovery

Length (ft)	Description	Volume (bbl)
0.00	RW: .147 @ 29 Degrees F = 150000	PP0.00
125.00	MW 50m 50w	1.75
55.00	OCM 17o 83m	0.77
0.00	190' GIP	0.00

Gas Rates

Choke (inches)	Pressure (psig)	Gas Rate (m ³ /d)

* Recovery from multiple tests



**TRILOBITE
TESTING, INC.**

DRILL STEM TEST REPORT

FLUID SUMMARY

Samuel Gary Jr. & Associates, Inc.

S32-14s-17w Ellis, KS

1515 Wynkoop
Ste. 700
Denver, CO 80202

Leiker - Gross 1-32

Job Ticket: 48485

DST#: 2

ATTN: Christopher Mitchell

Test Start: 2012.11.06 @ 18:45:00

Mud and Cushion Information

Mud Type: Gel Chem
Mud Weight: 9.00 lb/gal
Viscosity: 64.00 sec/qt
Water Loss: 8.37 in³
Resistivity: ohm.m
Salinity: 9000.00 ppm
Filter Cake: 1.00 inches

Cushion Type:
Cushion Length: ft
Cushion Volume: bbl
Gas Cushion Type:
Gas Cushion Pressure: psig

Oil API: 35 deg API
Water Salinity: 150000 ppm

Recovery Information

Recovery Table

Length ft	Description	Volume bbl
0.00	RW: .147 @ 29 Degrees F = 150000 PPM	0.000
125.00	MW 50m 50w	1.753
55.00	OCM 17o 83m	0.772
0.00	190' GIP	0.000

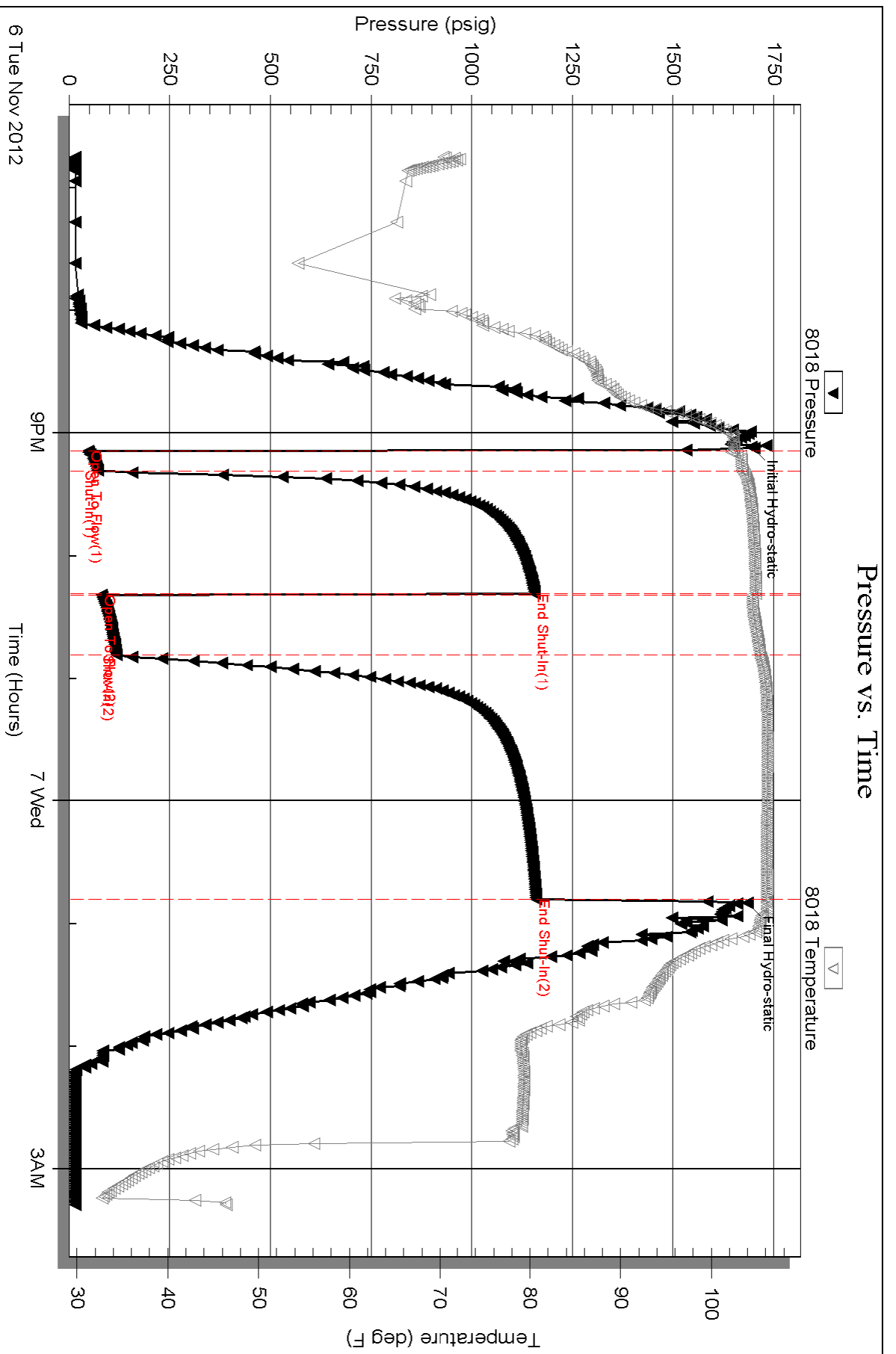
Total Length: 180.00 ft Total Volume: 2.525 bbl

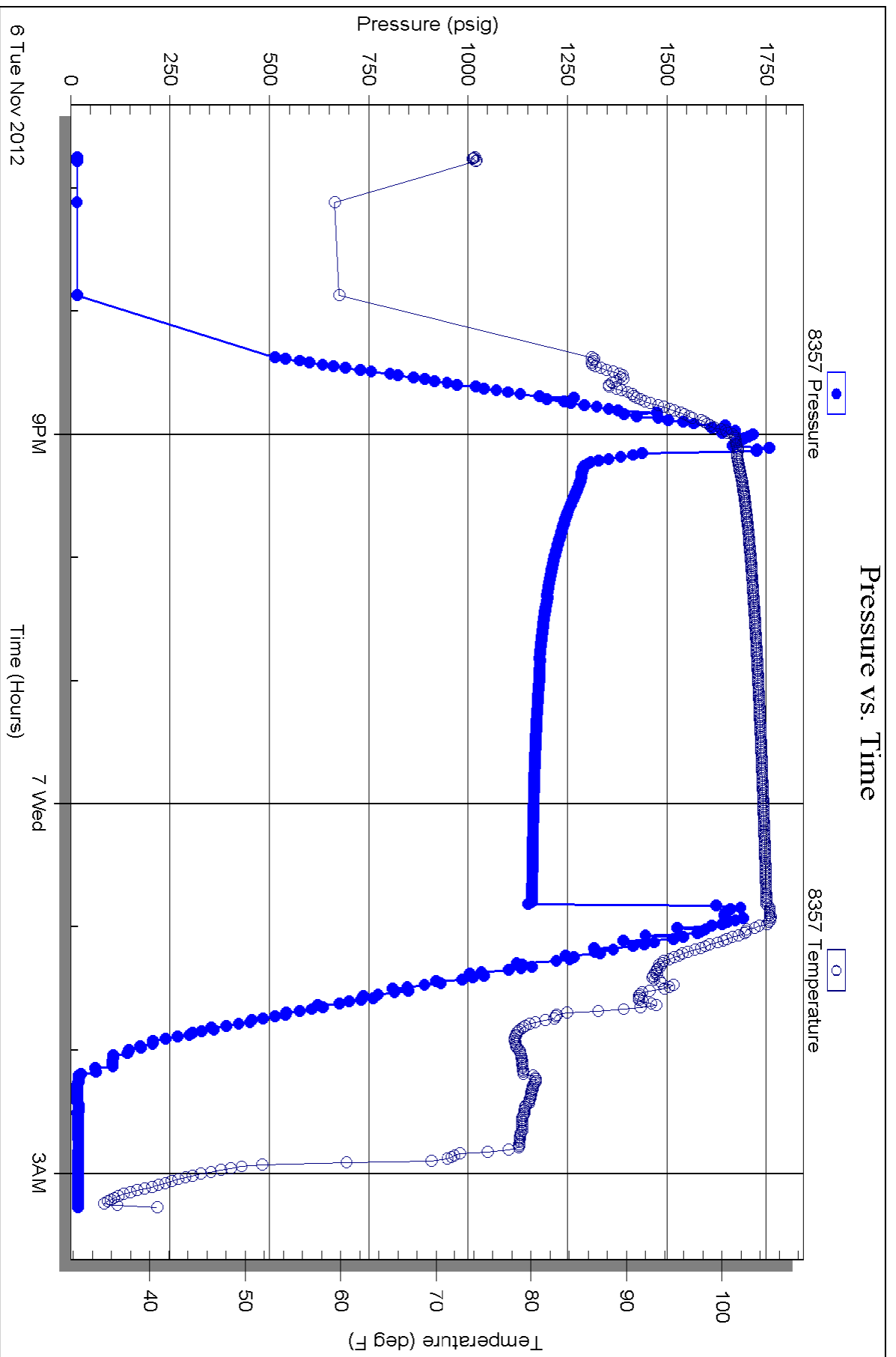
Num Fluid Samples: 0 Num Gas Bombs: 0 Serial #:

Laboratory Name: Laboratory Location:

Recovery Comments: API: 32 @ 30 Degrees F = 35.

Sampler 300 ML oil, 500 ML w ater, 700 ML mud, 185 psi.





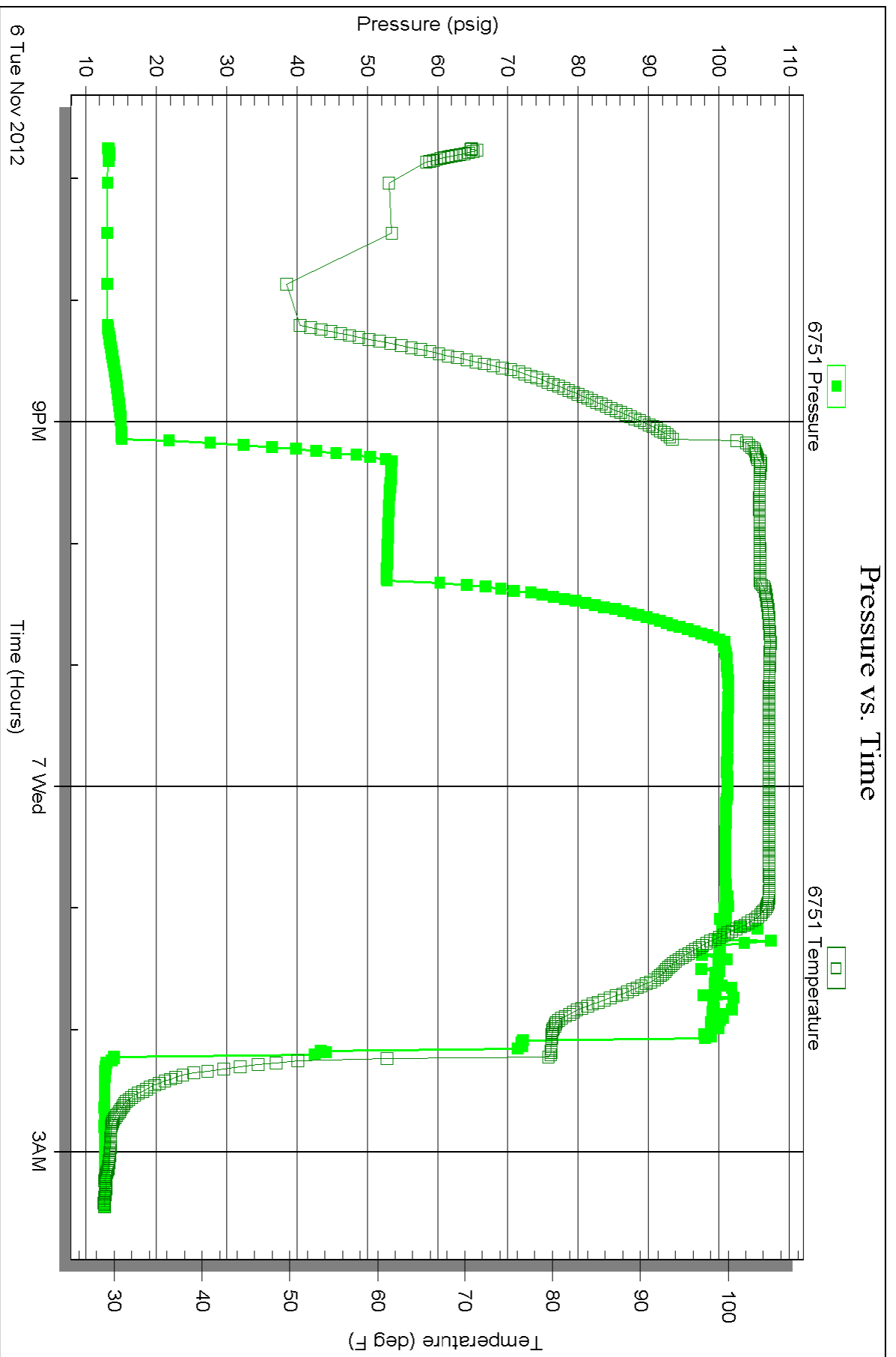
Serial #: 6751

Fluid

Samuel Gary Jr. & Associates, Inc.

Leiker - Gross 1-32

DST Test Number: 2



Triobite Testing, Inc

Ref. No: 48485

Printed: 2012.11.07 @ 07:42:21