



Woolsey Operating Company, LLC
Scale 1:240 (5"=100') Imperial
Measured Depth Log

Well Name: SCHUPBACH 1 SWD	Location: APPROX N2 NW NW	Region: Barber County, Kansas
License Number: API: 15-007-23961-00-00	Drilling Completed: November 9, 2012	
Surface Coordinates: Section 11-T34S-R11W, 175°N, 683' FWL	Vertical Hole	
Bottom Hole Coordinates: SCHUPBACH Pool		

Ground Elevation (ft): 1401	K.B. Elevation (ft): 1413
Logged Interval (ft): 4800	To: 6298 Total Depth (ft): 6298
Formation: Granite Wash	
Type of Drilling Fluid: Chemical Mud, Displacement at 3221'	

OPERATOR

Company: **Woolsey Operating Company, LLC**
Address: **125 N. Market Suite 1000
Wichita, KS 67202**

GEOLOGIST

Name: **W. Scott Alberg**
Company: **Alberg Petroleum, LLC**
Address: **609 Meadowlark Lane
Pratt, Kansas 67124**

FORMATION TOPS

WOODFORD SHALE	4855-3442	
VIOLA	4893-3483	
SIMPSON GROUP	4993-3562	
McLISH SHALE	5062-3649	
MCLISH SAND	5142-3729	
ARBUCKLE	5177-3764	
GRANITE WASH	6291-4878	
RTD	6298-4885	
LTD		No Open Hole Log

COMMENTS

Surface Casing: Set 7 joints 13 3/8" at 244' with 300 sxs Class A, 2% gel, 3% cc, plug down at 9:00 am on October 24, 2012. Cement did Circulate.
Production Casing: Ran 7" casing.
Deviation Surveys: 1/2 - 244, 1/2 - 700', 3/4 - 820', 1/2 1099', 3/4 - 1352, 0 - 1605' 1/4 - 1921', 1 - 2205', 1/4 - 2522', 1 - 2808', 1 - 3094', 1/4 - 3254', 1/2 - 3570', 3/4 - 3885', 1 - 4203', 1 - 4449', 1/4 - 4774', 1 - 5275', 3/4 - 6006'.
Contractor Bit Records:
1 - 17 1/2" out at 244'.
2 - 12 1/4" out at 700'.
3 - 9 7/8" out at 3254'.
4 - 9 7/8" out at 4450'.
5 - 9 7/8" out at 5275'.
6 - 7 7/8" out at 6006'.
7 - 7 7/8" out at 6298'.

Pipe Strap at 5275'
Strap 5283.62
Board 5279.58
Strap Long 4.04'

Gas Detector: Woolsey Operating Company, Trailer #1
Mud System: Mud Co, Brad Bortz, Engineer
DS Ts: None Taken
Logged by No Open Hole Logs Ran
LTD - NA

DS Ts

NO TESTS TAKEN

CREWS

Fossil Drilling, Inc Rig #4
Tool Pusher - Craig Eubank
Drillers - Days - Daniel Orrantia
Evening - Jan Wenrich
Morning - Andres Moestas

ROCK TYPES

Anhy	Congl	Lmst	Black sh
Bent	Sdy dolo	Mrlst	Gry sh
Brec	Sly dolo	Salt	Shale
Cht	Dol	Shale sltst	Shtysh
Clyst	Gyp	Shale	
Coal	Sdy lmsst	Ss	

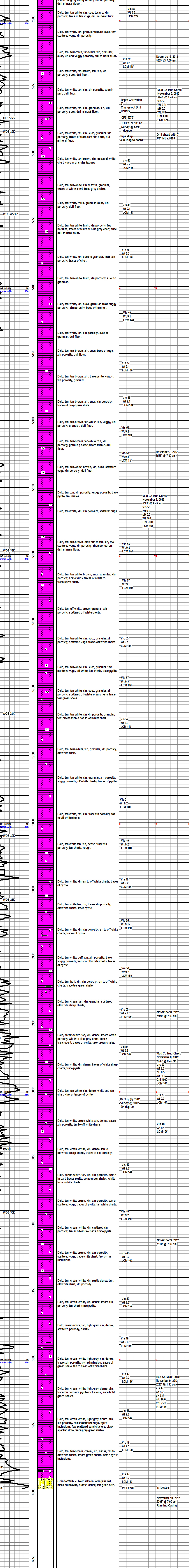
ACCESSORIES

Chlorite	Pellec	Grysh
Dol	Pellet	Lms
Sand	Pisolite	Grysh
Sity	Plant	Sandylms
	Strom	Sh
	Fuss	Shtstn
	Oortofidic	

Algae	STRINGER	Grysh
Amph	Anhy	Lms
Belm	Arg	Grysh
Bioclst	Bent	Grysh
Brach	Coral	Grysh
Bryozoa	Dol	Grysh
Ceph	Gyp	Grysh
Conral	Lst	Grysh
Echin	Mrst	Grysh
Fish	Sststrg	Grysh
Foram	Carbsh	Grysh
Fossil	Clystn	Grysh
Gastro	Dol	Grysh
Oolite		Grysh
Ostra		Grysh

Anhy	Grysh
Arg	Lms
Bit	Sandylms
Brecfrag	Sh
Calc	Shtstn
Chtdk	
Dol	
Ferrpel	
Glas	
Gyp	
Marl	
Nodule	
Phos	
Pyr	
Salt	
Sandy	
Silt	

TG, C1-C5	C1 (units)	C2 (units)	C3 (units)	C4 (units)	C5 (units)
-----------	------------	------------	------------	------------	------------



Granite Wash 6291-4878
CFS 6298'