

OPERATOR

Company: ANDY WERTH dba WERTH EXPLORATION TRUST
 Address: 1308 SCHWALLER AVE
 HAYS, KANSAS 67601

Contact Geologist: ANDY WERTH
 Contact Phone Nbr: 785-623-0013
 Well Name: DUBOIS-HAILEY # 1
 Location: SE NW NW NW Sec 23-11s-26w API: 15-063-22,080-00-00
 Pool: WILDCAT Field: UNNAMED
 State: KANSAS Country: USA

Scale 1:240 Imperial

Well Name: DUBOIS-HAILEY # 1
 Surface Location: SE NW NW NW Sec 23-11s-26w
 Bottom Location:
 API: 15-063-22,080-00-00
 License Number: 30259
 Spud Date: 2/7/2013 Time: 2:00 PM
 Region: GOVE COUNTY
 Drilling Completed: 2/13/2013 Time: 11:34 AM
 Surface Coordinates: 4892' FSL & 4696' FEL
 Bottom Hole Coordinates:
 Ground Elevation: 2613.00ft
 K.B. Elevation: 2620.00ft
 Logged Interval: 3600.00ft To: 4487.00ft
 Total Depth: 4487.00ft
 Formation: LANSING-KANSAS C ITY
 Drilling Fluid Type: CHEMICAL/FRESH WATER GEL

SURFACE CO-ORDINATES

Well Type: Vertical
 Longitude: Latitude:
 N/S Co-ord: 4892' FSL
 E/W Co-ord: 4696' FEL

LOGGED BY

Company: SOLUTIONS CONSULTING
 Address: 108 W 35TH
 HAYS, KS 67601

Phone Nbr: (785) 639-1337
 Logged By: Geologist Name: HERB DEINES

CONTRACTOR

Contractor: ROYAL DRILLING INC.
 Rig #: 1
 Rig Type: MUD ROTARY
 Spud Date: 2/7/2013 Time: 2:00 PM
 TD Date: 2/13/2013 Time: 11:34 AM
 Rig Release: 2/14/2013 Time: 3:00 AM

ELEVATIONS

K.B. Elevation: 2620.00ft Ground Elevation: 2613.00ft
 K.B. to Ground: 7.00ft

NOTES

DECISION TO PLUG AND ABANDON WELL BASED ON NEGATIVE RESULTS OF DST # 1 OVER THE "I" ZONE OF

THE LKC WHICH IS A PRIMARY PRODUCING ZONE IN THE AREA. SECONDARY ZONES IN THE "H" OF THE LKC AND THE FT SCOTT LACKED POROSITY AND PERMEABILITY.

OPEN HOLE LOGGING BY PIONEER ENERGY SERVICES: DUAL INDUCTION LOG, DUAL COMPENSATED POROSITY LOG, MICRORESISTIVITY LOG AND COMPENSATED BOREHOLE SONIC LOG.

DRILL STEM TESTING BY SUPERIOR TESTERS ENTERPRISES LLC: ONE (1) CONVENTIONAL TEST

FORMATION TOPS SUMMARY AND CHRONOLOGY OF DAILY ACTIVITY

DUBOIS-HAILEY # 1	BENGSTON # 1
4892' FSL & 4696' FEL, NW/4	SW NE
Sec. 23-11s-26w	Sec. 22-11s-26w
2613' GL 2620' KB	Reference Well

<u>FORMATION</u>	<u>SAMPLE TOPS</u>	<u>LOG TOPS</u>	<u>LOG TOPS</u>	
Anhydrite	2187+ 433	2187+ 433	+426	-7
B-Anhydrite	2231+ 389	2229+ 391	+386	-5
Topeka	3652-1032	3652-1032	-1031	+1
Heebner Shale	3870-1250	3868-1248	-1247	+1
Toronto	3890-1270	3891-1271	-1270	+1
LKC	3906-1286	3910-1290	-1289	+1
BKC	4162-1542	4157-1537	-1543	-6
Pawnee	4298-1678	4302-1682	-1687	-5
Ft Scott	4371-1751	4372-1752	-1761	-9
Cherokee Shale	4400-1780	4400-1780	-1787	-7
Mississippi	NOT REACHED	NOT REACHED	-1835	
RTD	4487-1867		-1910	
LTD		4488-1868		

SUMMARY OF DAILY ACTIVITY

- 2-07-13** RU, spud 11:00 AM, set 8 5/8" surface pipe to 221' w/ 150 sacks Common, 2%Gel, 3%CC, plug down 3:45 PM, WOC 8hrs, slope 3/4
- 2-08-13** 725', drilling
- 2-09-13** 2420' drilling, displace mud system 3327' – 3344'
- 2-10-13** 3362', drilling
- 2-11-13** 3803', drilling, DST # 1 4058' – 4090' "I" zone LKC
- 2-12-13** 4090', TIWB, CCH, drilling
- 2-13-13** 4420', drilling, RTD 4487' @ 11:34AM, CCH, TOWB, logs, P&A
- 2-14-13** 4487', finish LDDP and plugging, RD

DST # 1 4058' TO 4090' " I " ZONE LKC TEST SUMMARY PAGE

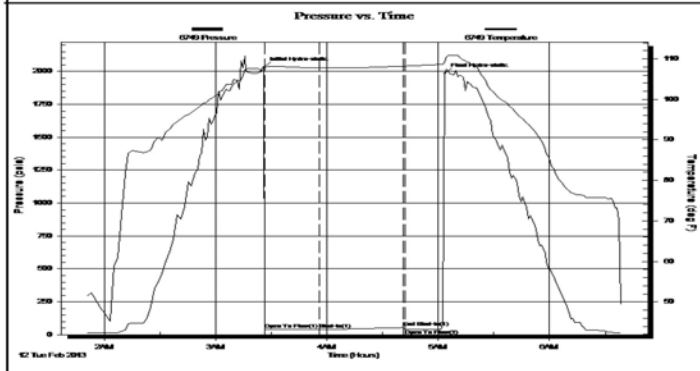
	DRILL STEM TEST REPORT	
	Werth Exploration Trust 1308 Schwaller Avenue Hays, Kansas 67601+2242 ATTN: Herb Deines	23/11S/26W/Gove Dubois-Halley #1 Job Ticket: 17508 DST#: 1 Test Start: 2013.02.12 @ 01:50:00

GENERAL INFORMATION:

Formation: Lansing/Kansas City	Test Type: Conventional Bottom Hole (Initial)
Deviated: No Whipstock ft (KB)	Tester: Ken Swinney
Time Tool Opened: 03:26:30	Unit No: 3325 Hays/106
Time Test Ended: 06:39:00	Reference Elevations: 2620.00 ft (KB)
Interval: 4058.00 ft (KB) To 4090.00 ft (KB) (TVD)	2613.00 ft (CF)
Total Depth: 4090.00 ft (KB) (TVD)	KB to GR/CF: 7.00 ft
Hole Diameter: 7.80 inches Hole Condition: Fair	

Serial #: 6749 Inside	Capacity: 5000.00 psia
Press@RunDepth: 40.20 psia @ 4086.00 ft (KB)	Last Calib.: 2013.02.12
Start Date: 2013.02.12 End Date: 2013.02.12	Time On Btm: 2013.02.12 @ 03:26:00
Start Time: 01:50:00 End Time: 06:39:00	Time Off Btm: 2013.02.12 @ 05:03:30

TEST COMMENT: 1ST Open 30 Minutes/Weak blow /Blow built to 3/4 inch in bucket of diesel then died to 1/4 inch
 1ST Shut In 45 Minutes/No blow back
 2ND Open 15 Minutes/Weak surface blow /Blow died in 2 minutes

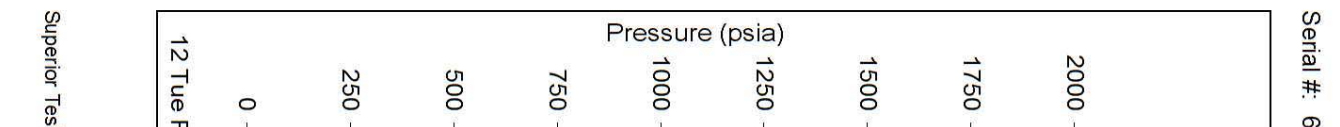


PRESSURE SUMMARY			
Time (Min.)	Pressure (psia)	Temp (deg F)	Annotation
0	2032.81	108.09	Initial Hydro-static
1	38.90	107.75	Open To Flow (1)
30	40.20	107.77	Shut-In(1)
75	54.30	108.18	End Shut-In(1)
76	40.04	108.20	Open To Flow (2)
98	1985.38	109.15	Final Hydro-static

Recovery		
Length (ft)	Description	Volume (bbl)
1.00	Mud 100%	0.00

Gas Rates			
	Choke (inches)	Pressure (psia)	Gas Rate (Mcf/d)

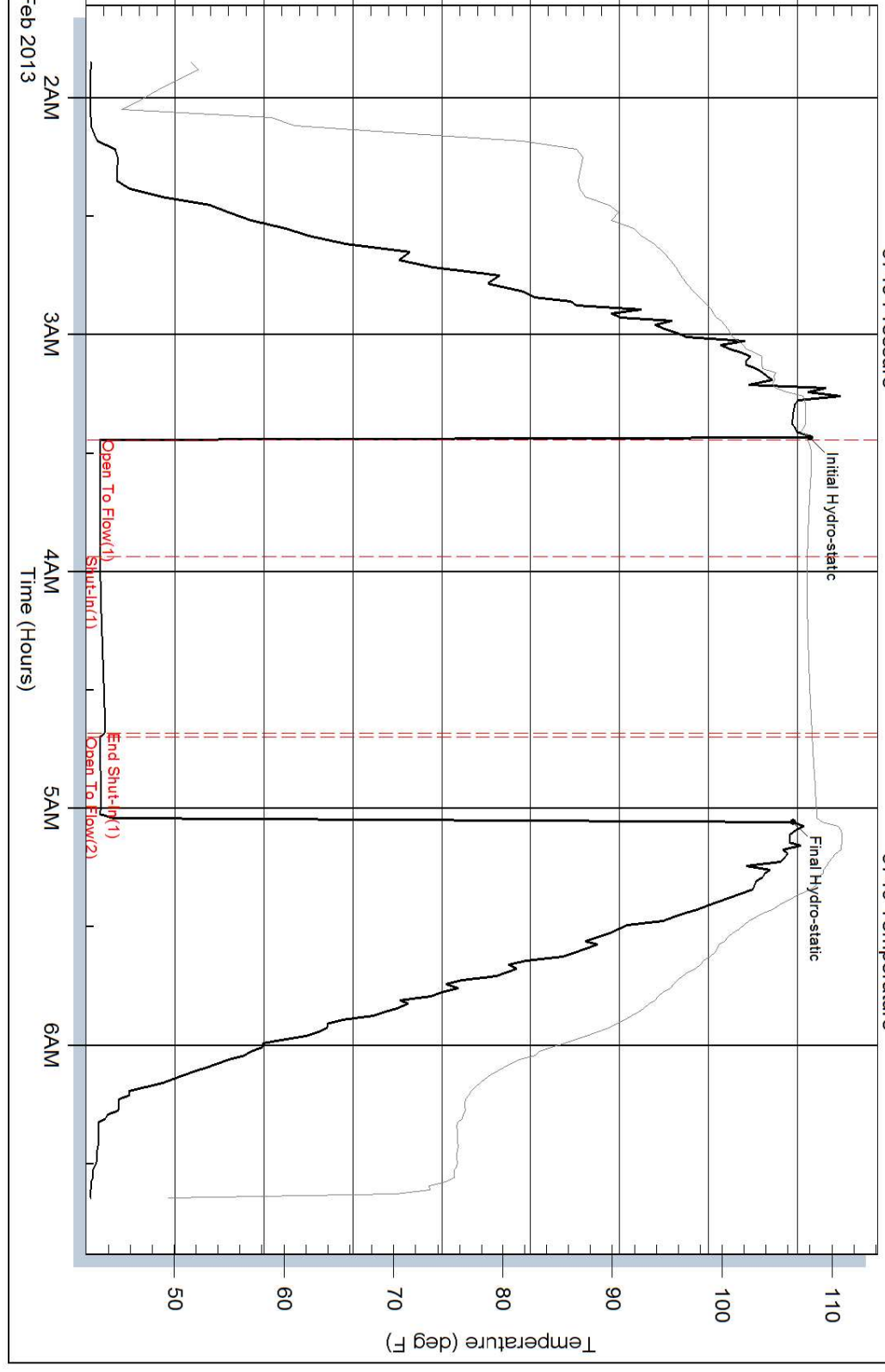
DST # 1 EXPANDED CHART









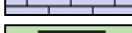



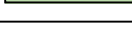

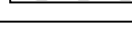
Superior Testers

Serial #: 6749

Pressure vs. Time



ROCK TYPES

 Clystgy	 Lmst fw<7	 shale, gry	 Shcol	 Lscongl
 Congl	 Lmst fw7>	 Carbon Sh	 Ss	
 Chtcongl	 shale, grn	 shale, red	 Dol Lime	

ACCESSORIES

MINERAL FOSSIL

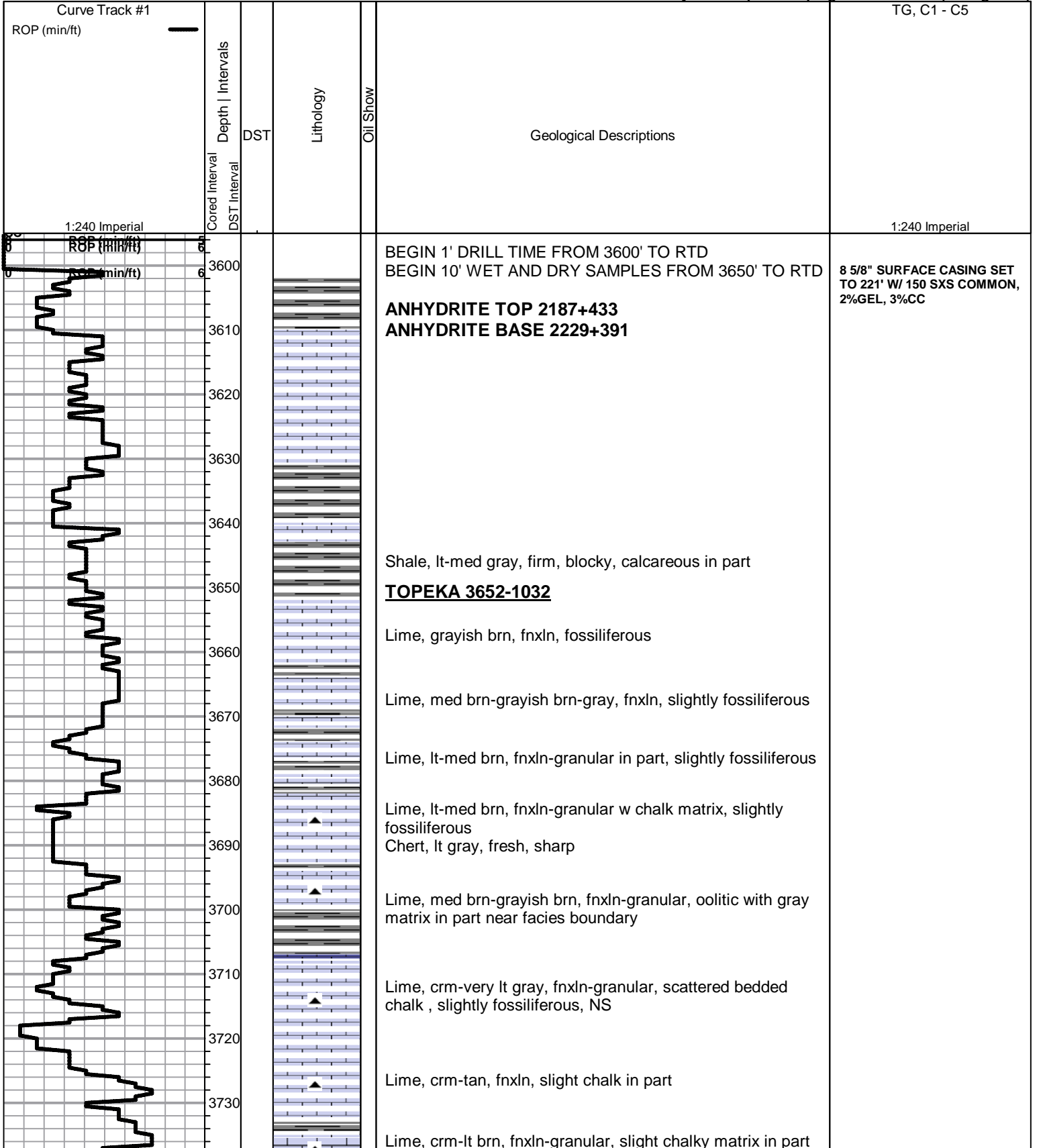
- MINERAL**
- ▲ Chert, dark
 - ∩ Glauconite
 - ⊞ Nodules
 - P Pyrite
 - Sandy
 - △ Chert White

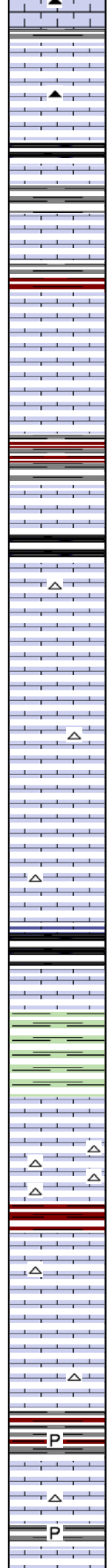
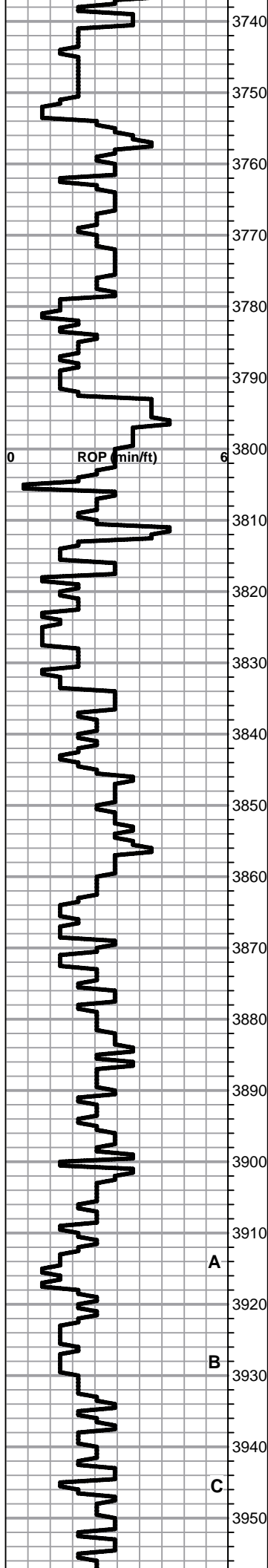
- FOSSIL**
- ◊ Oolite

OTHER SYMBOLS

- DST**
- DST Int
 - DST alt
 - Core

Printed by GEOstrip VC Striplog version 4.0.7.0 (www.grsi.ca)





Lime, lt brn, granular
Shale, gray, calcareous

Shale, gray-black carbonaceous, blocky

Shale, grayish green, firm, blocky
Lime, lt-dark brn, fnxln, slightly fossiliferous, hard on crush

Lime, lt-med brn, fn-vfxln, micritic in part,

Lime, crm, fnxln-granular, bed chalk in part , NS

Lime, crm-med grayish brn, granular-fnxln

Lime, lt-med brn, fn-vfxln
Shale, gray, maroon, reddish brn, soft, blocky

Shale, black carbonaceous, blocky

Lime, crm, fnxln-granular in part, NS

Lime, crm, fnxln-granular
Chert, tan-white, fresh, sharp

Lime, crm-lt brn, mostly fnxln, NS

Lime, crm-lt brn, fnxln, scattered fossil fragments

Lime, lt-med brn, fnxln, slight chalk in part

HEEBNER SHALE 3868-1248
Shale, black carbonaceous, fissile, blocky
Lime, lt-med brn, fnxln, slightly fossiliferous

Shale, lt gray-lime green, soft mud to firm blocky

TORONTO 3891-1271
Lime, white-crm, fn-vfxln, slight bed chalk, NS

Lime, crm-lt brn, fn-vfxln, opaque chert, fresh, sharp

LKC 3910-1290
Lime, crm, fnxln-granular, scattered oolitic with fossil fragments, NFO, No Stain, No Odor, No wet cut

Lime, crm-tan, fnxln

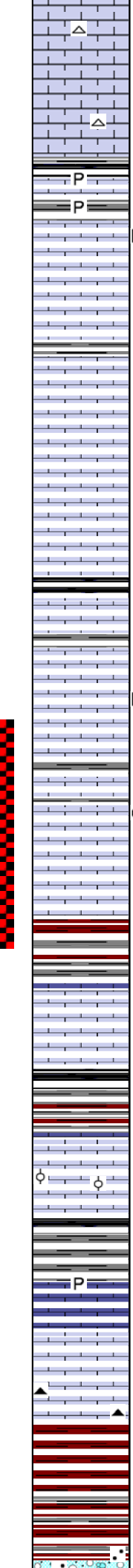
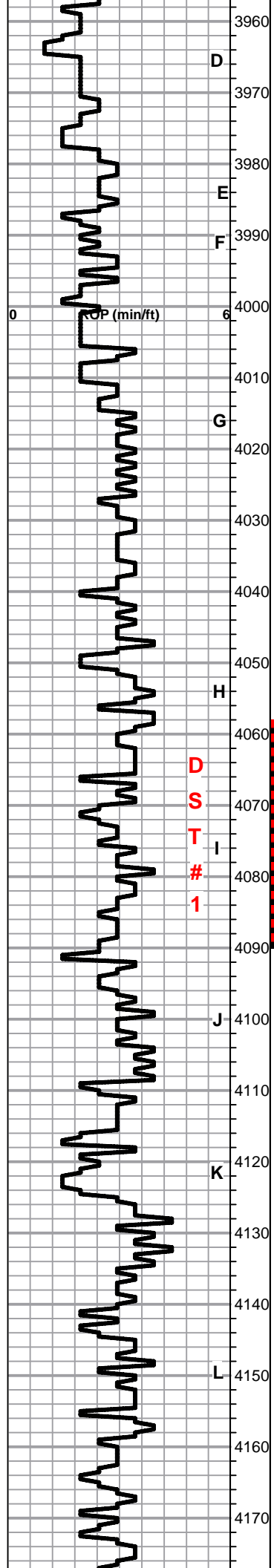
Lime, crm, fnxln, bedded chalk in part, NS

Shale, reddish brn, soft, blocky

Lime, crm, fnxln-granular, oolitic in part, NS, No Wet Cut

Lime, offwhite-crm, fnxln, slight bedded chalk in part

Lime, crm-lt brn, fn-vfxln, slight bed chalk, NS



Lime, crm-lt brn, fn-vfxln, slight bed chalk, NS

Lime, crm-lt brn, fn-vfxln, slight bed chalk, NS

Shale, gray-black
Lime, dove gray, fn-vfxln
Shale, grayish green, soft blocky

Lime crm-lt brn, fnxln, thin oolitic zone, hvy dead oil, No Odor, NFO, spotty stain, sparry calcite backfill

Lime, tan-lt brn, fnxln, dolomitic in part, NS, No Wet Cut

Lime, crm, fnxln, bedded chalk, NS

Lime, white-crm, fn-micro xln, slight bed chalk, NS

Lime, white-crm, fn-micro xln, slight bed chalk, NS

Shale, black carbonaceous, fissile, blocky
Lime, med brn, fn-vfxln, hard on crush
Shale, grayish green, soft blocky

Lime, white-crm-lt brn fnxln-granular, chalky, NS

Lime, lt-med brn, fn-vfxln, few oolitic chips w/ spotty hvy dead oil stain, NFO, No Odor

Lime, lt-med brn, fnxln-fine granular, fine ppt and interxln porosity, scattered to saturated staining, very lt detectable odor. Porosity very fine and visible under high magnification

Lime, lt-med brn, mostly fnxln

Shale, red, brn, gray, soft blocky
Shale, red, brn, gray, soft blocky

Lime, crm-lt brn, micro xln, bed chalk in part, NS

Shale, gray-black carbonaceous, soft blocky grading into gray, red and brn shales, soft blocky

Lime, white-crm, granular, micro oolitic, NS, No Odor, No Wet Cut

Shale, black carbonaceous

Lime, med brn-grayish brn, granular-fnxln, hard on crush, NS

Lime, lt brn-lt grayish brn, fn-vfxln, bed chalk in part, NS

Lime, offwhite-lt gray, fn-vfxln, Chert, orange, fresh, sharp
BKC 4157-1537

Shale, reddish brn-dark brn, soft blocky

Shale, vari color, reds, brns, grays, soft-firm blocky

Shale, lt red wash, sandy in part

MICROLOG SHOWS NO PERMEABILITY IN ZONE

MICROLOG SHOWS THIN BREAK WITH VERY LITTLE TO NO PERMEABILITY

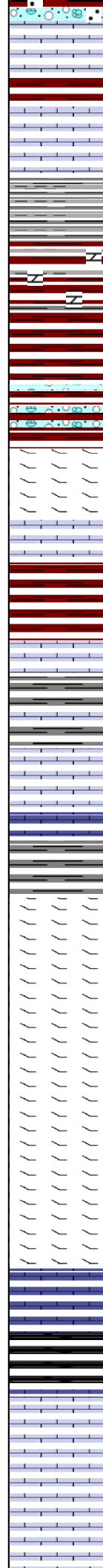
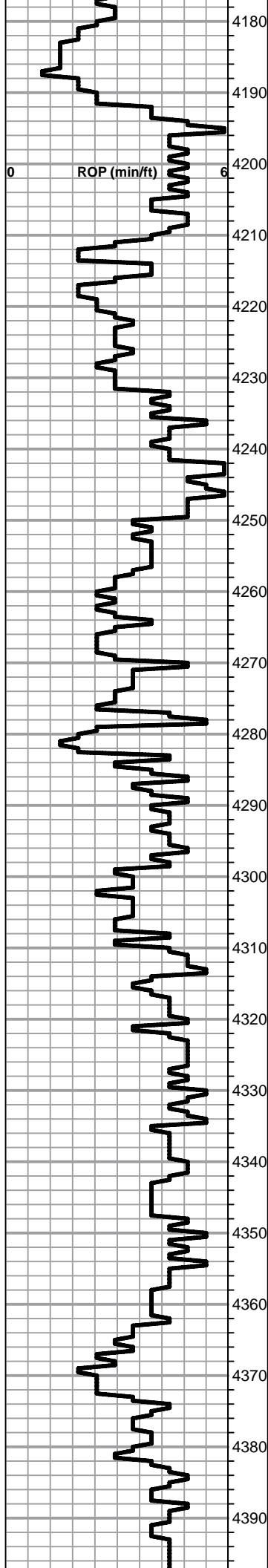
DST # 1 4058' TO 4090' SEE HEADER FOR TEST SUMMARY

MICROLOG SHOWS NO PERMEABILITY IN "I" ZONE

PIPE STRAP .32 SHORT TO BOARD @ 4090'

**D
S
T

1**



Lime, crm, fnxln with mix of clastic lime with red shale mix and staining

Lime, lt brn-lt gray, fnxln, hard on crush, micritic in part

Lime, med brn-lt red-gray, fn-micro xln

Shale, lt gray wash, lt-med gray, soft blocky, waxy in part

Shale, vari color, grays, brns, red, maroon, soft blocky small chert nodules, vari colored

Shale, as above with clastic limestone content in part

Lime, tan, dolomitic, chips of orange chert in pat

Shale, reddish brn-dark brn, firm blocky

Lime, lt brn, fnxln, granular, hard on crush

Lime, tan-lt brn, fnxln, micro oolitic and well cemented

Lime, tan-gray, fnxln, increasing shaliness near facies boundary

Shale, med gray, firm blocky

PAWNEE 4302-1682

Lime, tan-offwhite-lt gray, fn-micro xln, hard on crush, slightly dolomitic, scattered chips of orange chert, fresh

Lime, tan-offwhite, dolomitic, fnxln-hard granular

Lime, med brn-med grayish brn, fnxln, dolomitic with increase in gray shale content

Lime, med gray, fnxln, slightly dolomitic, hard on crush

Lime, med -dark gray, fnxln, dolomitic, hard on crush

Lime, dark gray-black with increasing black shale near facies boundary grading into black carbonaceous shale

Shale, black carbonaceous, fissile, blocky

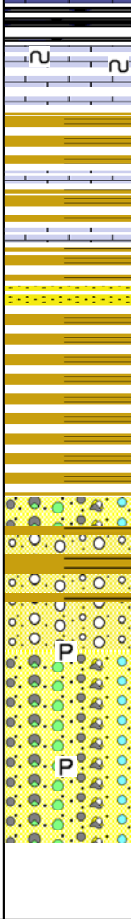
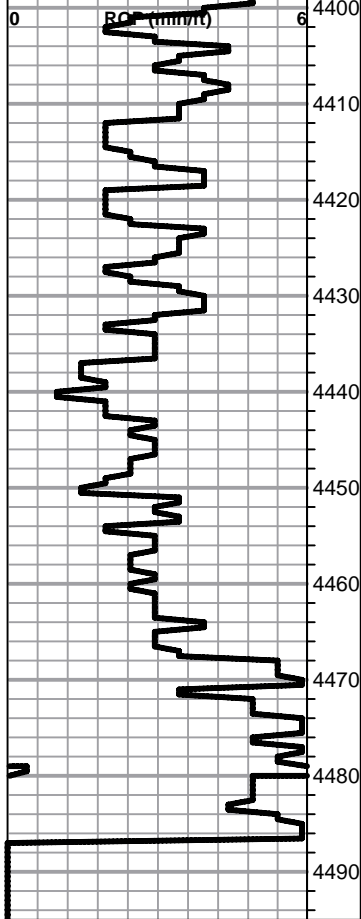
FT SCOTT 4372-1752

Lime, lt-med brn, mostly fnxln, hard on crush, few chips with lt scattered stain in vf interxln and scattered ppt porosity, NFO, No Odor, porosity visible under high magnification only. Deemed impermeable and too poorly developed to be commercial

Lime, med brn-grayish brn, fnxln, chalk in part, hard on crush

MICROLOG SHOWS VERY THIN ZONE WITH LIMITED PERMEABILITY

CHEROKEE SHALE 4400-1780



Shale, gray-black carbonaceous
Lime, crm-lt brn, fn-vfxln, scattered glauconitic specks, NS
Shale, vari color, firm blocky
Shale, vari color, firm blocky
Shale, vari color, increase in color intensity and variation
few chips of pale green shale, waxy
Shale, vari color as above with increasing quartz grain
content and vari color chert, NS
Cherts, vari colored, shale vari colored
Cherts, vari color with white oolitic chert in part, NS
Chert, vari colored
Chert, vari colored with granular red stained lime in part, NS

RTD 4487-1867 LTD 4488-1868

**BIT CRATERED. DECISION TO
TD WELL AND LOG**
SLOPE @ 4487' 1 DEGREE