

Adam Eldani Geo-Log/Report

WellSight Systems

Scale 1:240 (5"=100') Imperial

Measured Depth Log

Well Name: #2 Potosi
Location: SEC 13- twp 27S- rge 24W FORD COUNTY
License Number: API 15-057-20856 Region: KANSAS
Spud Date: 11/07/2012 Drilling Completed: 11/18/2012
Surface Coordinates: 1662' FNL & 335' FWL

Bottom Hole Deviation Surveys are detailed through out the Geo-Report.

Coordinates:
Ground Elevation (ft): 2440 K.B. Elevation (ft): 2451
Logged Interval (ft): 3400 To: 5105 Total Depth (ft): 5100
Formation: Mississippian
Type of Drilling Fluid: Mud-Co Chemical

Printed by MUD.LOG from WellSight Systems 1-800-447-1534 www.WellSight.com

OPERATOR

Company: Ritchie Exploration Inc. (drilled by DUKE #10)
Address: 8100 E. 22nd ST. N. #700
Wichita, KS, 67278-3188

GEOLOGIST

Name: Adam M.A. Eldani
Company: Ritchie Exploration Inc.
Address: 8100 E. 22nd ST. N. #700
Wichita, KS, 67278-3188

Tops

TOPS:

E-LOG:

SAMPLE TOPS:

Anhydrite1477'+974	Anhydrite1476'+973
B/Anhydrite 1520'+931	B/Anhydrite1517'+934
Stotler 3484'-1033	Stotler 3485'-1034
Heebner 4142'-1691	Heebner 4142'-169
Lansing4258'-1807	Lansing 4265'-1814
Muncie Shale 4444'-1993	Muncie Shale4444'-1993
Stark Shale4570'-2119	Stark Shale4574'-2123
Hush 4615'-2164'	Hush 4618'-2167
BKC 4649'-2198	BKC 4654'-2203
Marmaton4706'-2255	Marmaton 4710'-2259
Altamont4727'-2276	Altamont 4733'-2282
Pawnee4784'-2333	Pawnee 4785'-2334
Cherokee Shale4831'-2380	Cherokee Shale 4834'-2383
Huck 4918'-2467	Huck 4918'-2467
Atoka 4935'-2484	Atoka 4935'-2484
Mississippian 4981'-2530	Mississippian 4972'-2521

Misc. Info.

All DST's info. are NEAR the correct log depth.

DAILY DRILLING REPORT:

DATE 7AM DEPTH

11/7 Spud
 11/9 360
 11/10 1951
 11/11 2790
 11/12 3439
 11/13 3990
 11/14 4486
 11/15 4804
 11/16 4926
 11/17 4976
 11/18 5090

Comments

Casing: 8 5/8" @ 360'

Well Log Surveys BY NABORS: Compensated Denisty/ Neutron Log & Dual Induction.

TESTING COMPANY: SUPERIOR WELL TESTERS.

MUD COMPANY: MUD CO.

After evaluation of DST's and Electric Logs, 4 1/2" Production casing was set on the #2 POTOSI for further testing for commerical quantities of oil and gas.

SAMPLES WILL BE DEPOSITED WITH KANSAS GEOLOGICAL SURVEY.

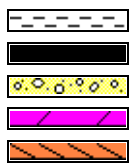
RESPECTFULLY SUBMITTED

Adam M. A. Eldani

ROCK TYPES



Anhy
 Bent
 Brec
 Carb sh
 Cht



Clyst
 Coal
 Congl
 Dol
 Gyp



Igne
 Lmst
 Meta
 Mrlst
 Salt



Shale
 Shcol
 Shgy
 Sltst
 Ss



Till

ACCESSORIES

MINERAL

- Anhy
- Arggrn
- Arg
- Bent
- Bit
- Breclfrag
- Calc
- Carb
- Chtdk
- Chtlt
- Dol
- Feldspar
- Ferrpel
- Ferr
- Glau
- Gyp

- Hvymin
- Kaol
- Marl
- Minxl
- Nodule
- Phos
- Pyr
- Salt
- Sandy
- Silt
- Sil
- Sulphur
- Tuff

FOSSIL

- Algae
- Amph

- Belm
- Bioclst
- Brach
- Bryozoa
- Cephal
- Coral
- Crin
- Echin
- Fish
- Foram
- Fossil
- Fuss
- Gastro
- Oolite
- Oomold
- Ostra
- Pelec

- Pellet
- Pisolite
- Plant
- Strom

STRINGER

- Anhy
- Arg
- Bent
- Coal
- Dol
- Gyp
- Ls
- Mrst
- Sltstrg
- Ssstrg

TEXTURE

- Boundst
- Chalky
- Cryxln
- Earthy
- Finexln
- Grainst
- Lithogr
- Microxln
- Mudst
- Packst
- Wackest

OTHER SYMBOLS

POROSITY

- Earthy
- Fenest
- Fracture
- Inter
- Moldic
- Organic
- Pinpoint

- Vuggy

SORTING

- Well
- Moderate
- Poor

ROUNDING

- Rounded
- Subrnd
- Subang
- Angular

- Even
- Spotted
- Ques
- Dead

- Dst
- Dst_alt

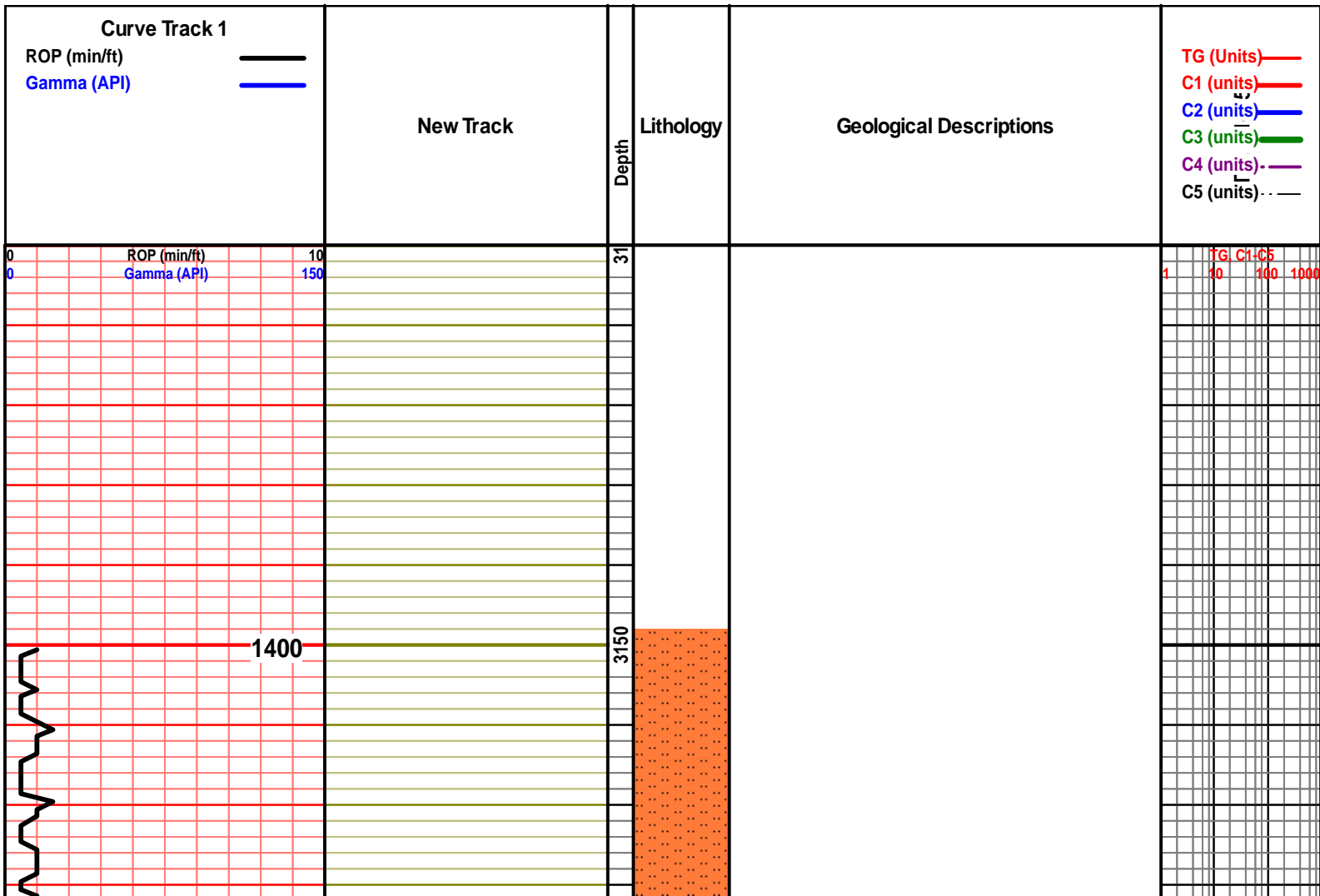
EVENT

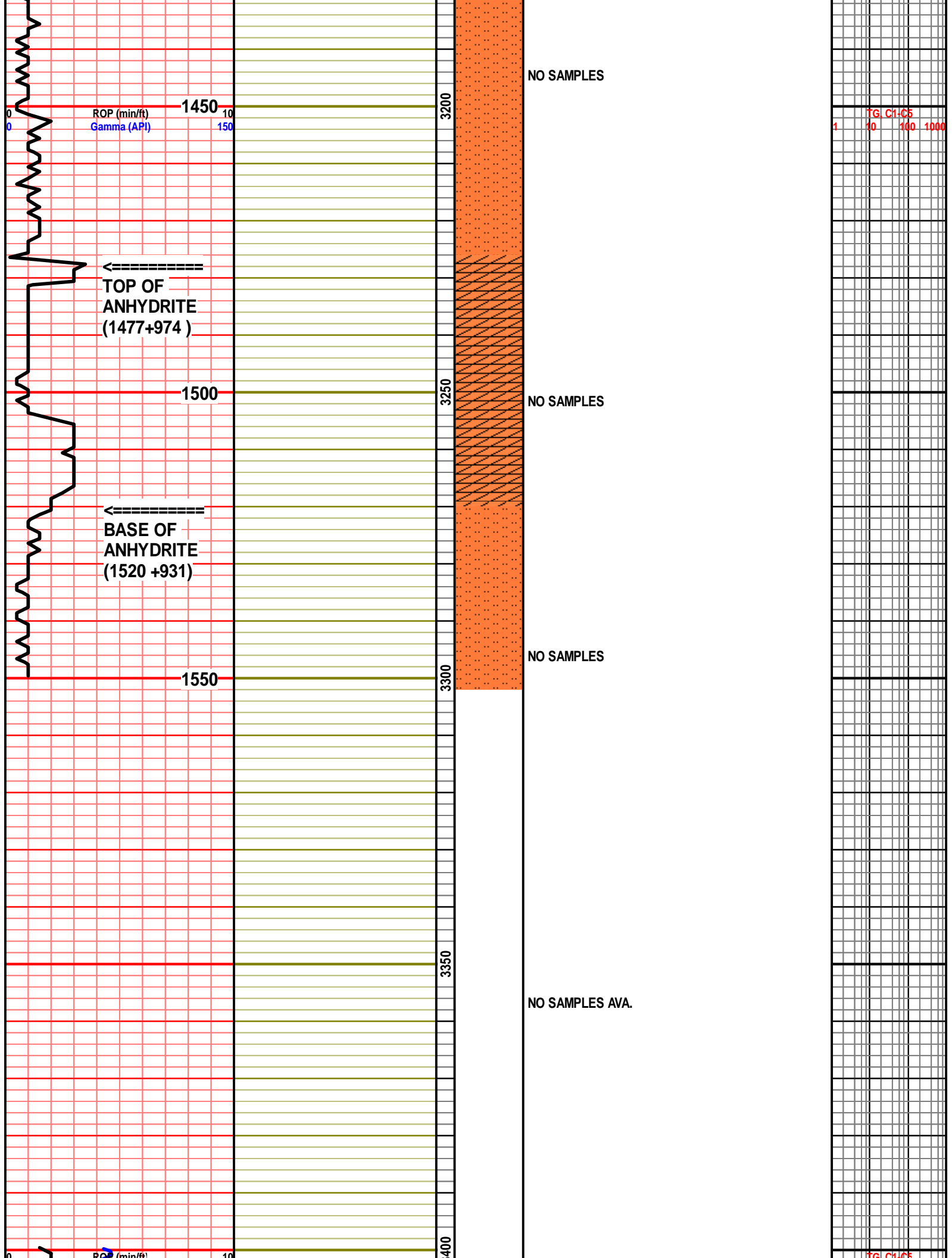
- Rft
- Sidewall

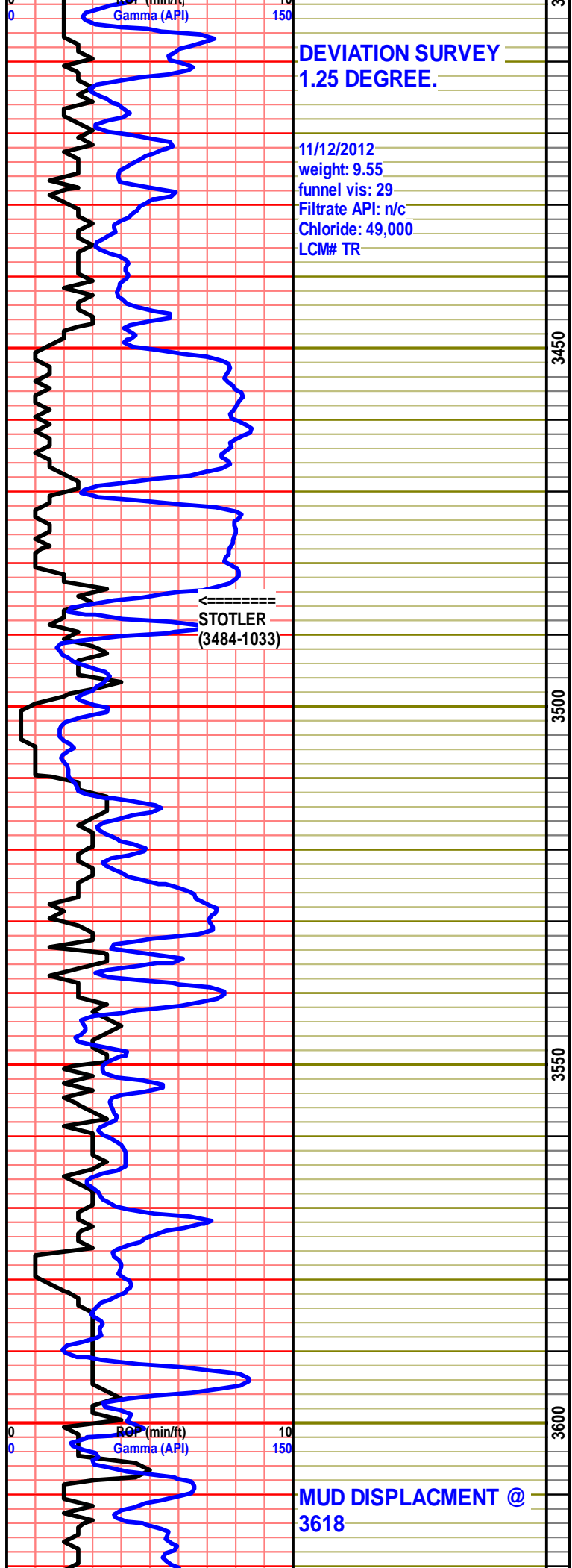
INTERVAL

- Core
- Dst

- OIL SHOW
- aimimg_1

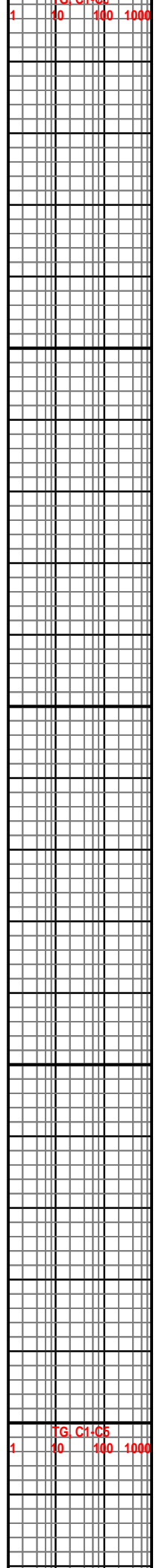


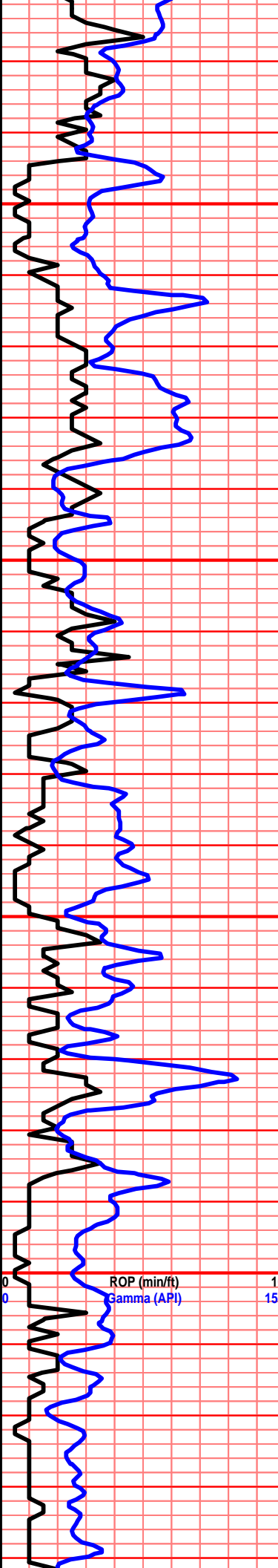




NO SAMPLES AVA.

NO SAMPLES AVA.





GEOLOGIST ON LOCATION @ 3700'

PUMP PRESSURE: 850+

NO SAMPLES AVA.

NO SAMPLES AVA.

3650

3700

3750

3800

3810: mstly drk tan sub-chlky lm, few tan foss lm, (fuss), no odr, ns.

3820: aa, incrs in criniod foss, no odr, ns.

3830: incrs, in gry sh, tan grn stn lm, fair intr prtcl por, no odr, ns.

3840: aa, crm-tan inxln lm, poor inxln por, no odr, ns.

3850: incrs in maroon slty sh, gry-tan inxln lm, poor-no por, no odr, ns.

3860: crm chrt, lght crm chrtly lm, prtly foss, no odr, ns.



TG C1-G5
1 10 100 1000



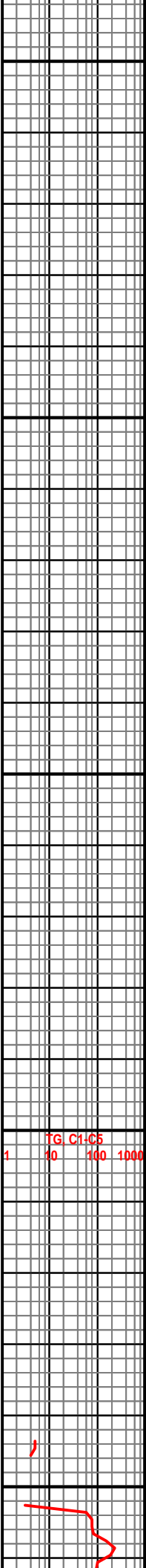
PUMP PRESSURE: 850+

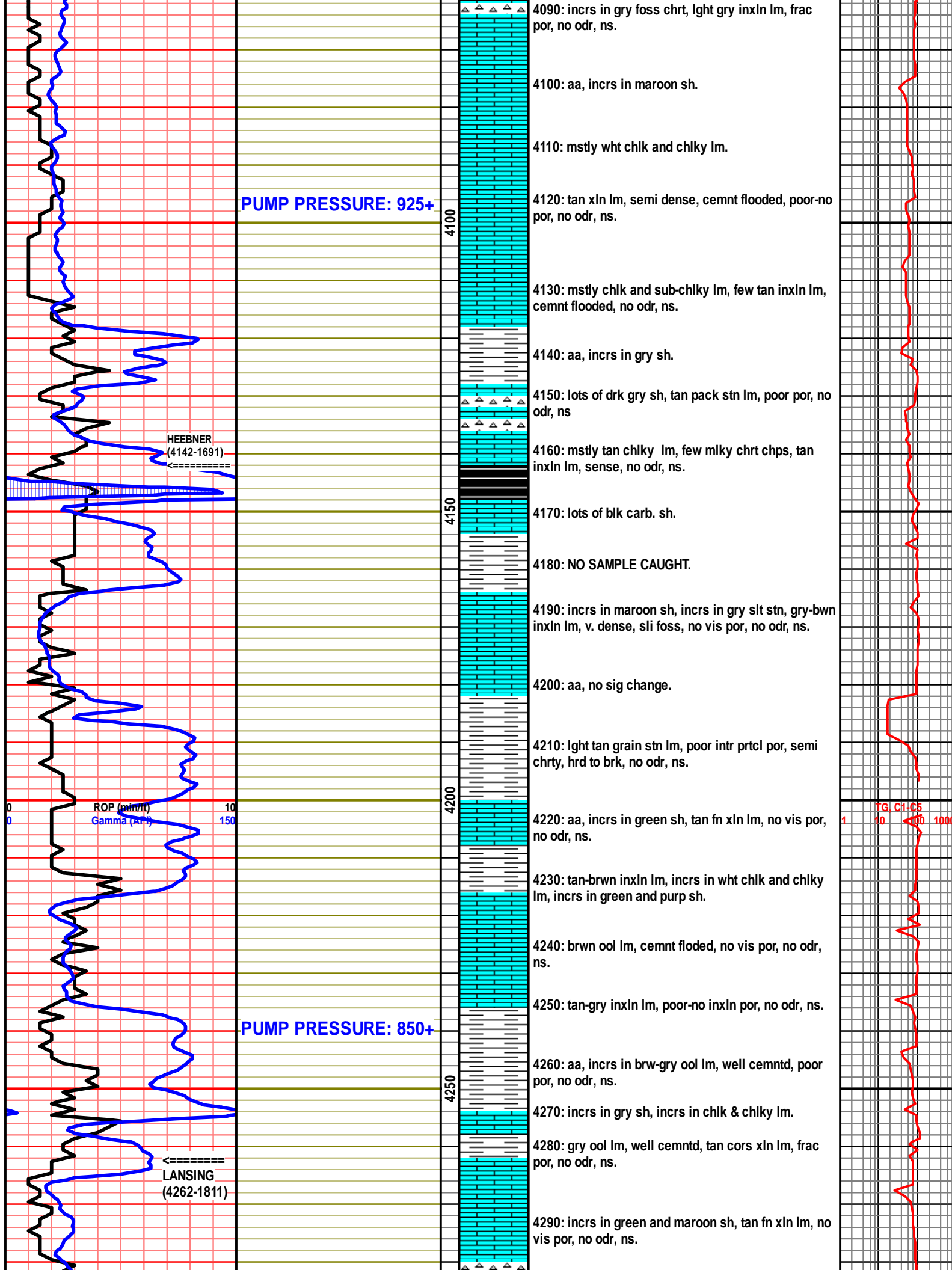
11/13/2012
 weight: 8.75
 funnel vis: 49
 Filtrate API: 8.8
 Chloride: 5,300
 LCM# 1.5

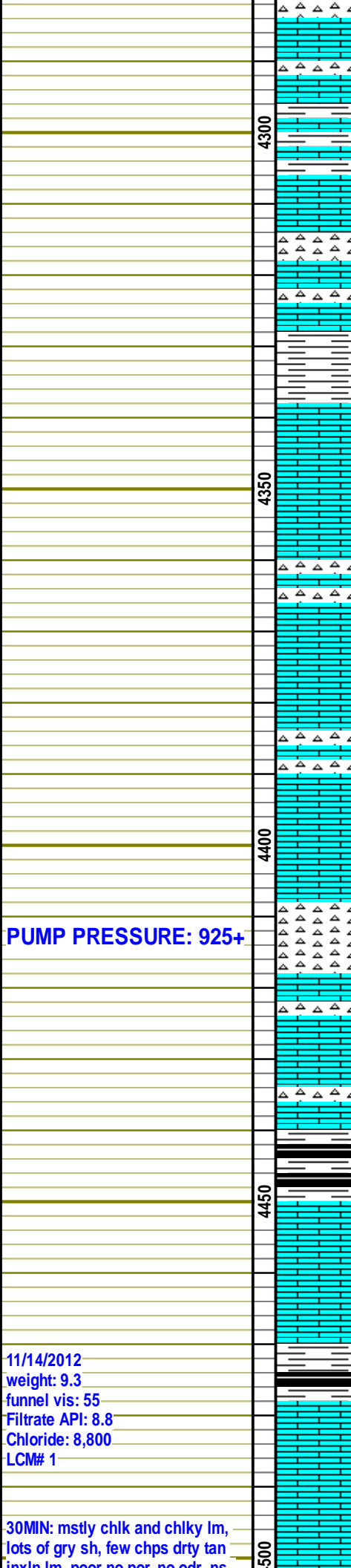
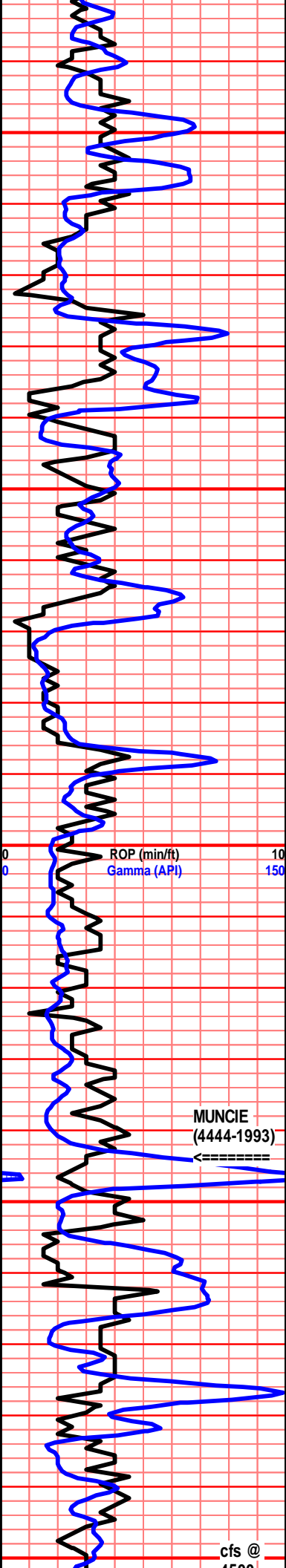
**DEVIATION SURVEY
 0.25 DEGREE.**



3870: mstly gry and maroon sh.
 3880: aa, crm pack stn lm, poor por, no odr, ns.
 3890: crm-tan xln lm, pyrtzd, semi foss, no vis por, no odr, ns.
 3900: mstly gry and maroon sh.
 3910: tan pack stn w/ exclnt vuggy por, lots of shly lm, no odr, ns.
 3920: mstly gry and maroon sh.
 3930: incrs in green and purp sh, lght crm chrty nlm, no odr, ns.
 3940: aa, no sig change.
 3950: incrs in drty-gry chrt, lots of gry, maroon and green sh, lots of lght crm chrty lm, no odr, ns.
 3960: aa, no sig change.
 3970: incrs in clr and brwn chrt, lght tan grain stn lm, fair intr prtcl por, no odr, ns.
 3980: mstly drk tan chlky lm, few lght crm chrty lm, no odr, ns.
 3990: NO SAMPLE CAUGHT.
 4000: crmsh/gry semi xln lm, poor por, no odr, ns.
 4010: mostly crm sub-chlky lm, lm aa, no odr, ns.
 4020: tan micrtic lm, poor-fair por, no odr, ns.
 4030: aa, no sig change.
 4040: lght gry inxln lm, frac por, no odr, ns.
 4050: tan inxln lm, cemnt floded, poor-no por, no odr, ns.
 4060: mstly crm-tan micrtic lm, lots of tan sub-chlky lm, no odr, ns.
 4070: aa, incrs in maroon and gry sh.
 4080: incrs in wht chl & crm sub-chlky lm.







4300: incrs in tan foss chrt, lotys of wht chlk.

4310: incrs in brwn chrt, tan-ght gry fn xln lm, semi dense, no vis por, no odr, ns.

4320: brwn-gry inxln lm, poor-no inxln por, incrs in chlk, no odr, ns.

4330: aa, greater incrs in chlk & chlky lm, incrs in brwnsh ool lm, cemnt flooded, no vis por, no odr, ns.

4340: lots of mlky & brwn foss chrt & chrty lm, no odr, ns.

4350: aa, crm inxln lm, poor por, no odr, ns.

4360: crm-brwn micrtic lm, poor-fair por, no odr, ns.

4370: aa, mstly lght crm sub-chlky lm, no odr, ns.

4380: crm-tan fn xln lm, v. dense, no vis por, incrs in gry & brwn chrt, no odr, ns.

4390: mstly chlk & chlky lm.

4400: aa, incrs in gry sh, incrs in gry inxln lm, poor por, no odr, ns.

4410: lots of wht/mlky chrt, tan fn xln lm, no vis por, no odr, ns.

4420: v. chlky sample, mstly chlk & chlky-lm.

4430: aa, lots of wht translucnt chrt, no odr, ns.

4440: mstly ch & chlky lm, lots of tan chrt, tan-gry inxln lm, dense, no vis por, no odr, ns.

4450: aa, decrease in chrt.

4460: incrs in green & gry sh, v. chlky sample.

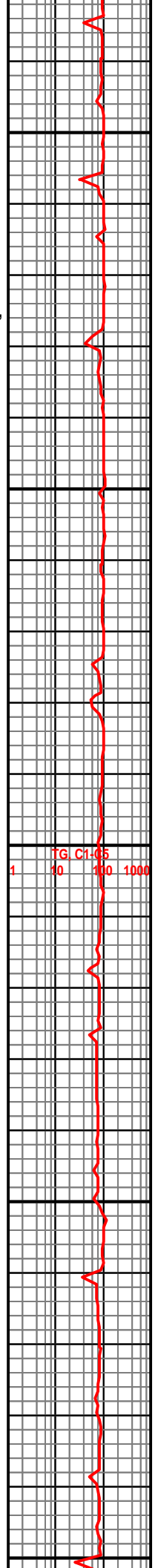
4470: shw of blk carb sh, lght crm inxln lm, foss, frac por, no odr, ns.

4480: incrs in mlky chrt, tan-gry highly pyrtzd lm, dense, hrd to brk, no odr, ns.

4490: lots of gry, green, purp & blk sh in sample, mstly tan inxln lm, semi foss, no odr, ns.

4500: aa, no sig change.

4510: lots chlky lm, tan-lght tan pack stn lm, poor-fair intr prtcl por, no odr, ns.

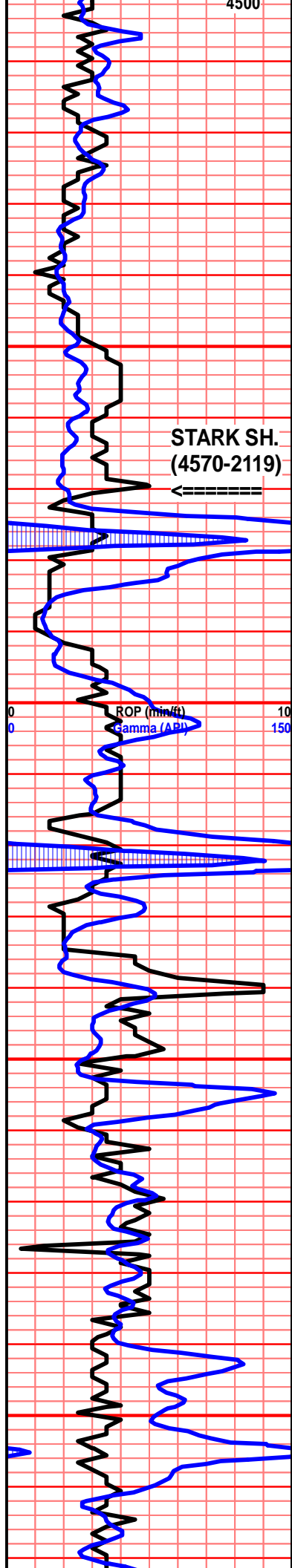


PUMP PRESSURE: 925+

MUNCIE
(4444-1993)

11/14/2012
weight: 9.3
funnel vis: 55
Filtrate API: 8.8
Chloride: 8,800
LCM# 1

30MIN: mstly chlk and chlky lm,
lots of gry sh, few chps drty tan
inxln lm, poor no por, no odr, ns

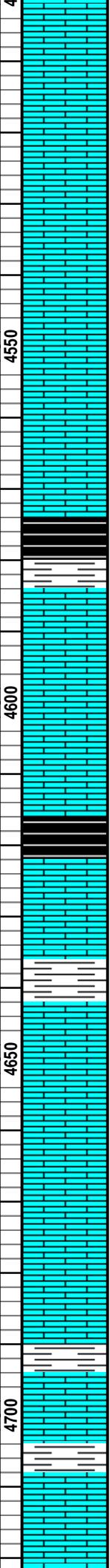


4500
 inxln lm, poor-no por, no odr, ns.
 60MIN: mstly chlk & chlky lm, lots gry sh, crm inxln lm, pyrtzd, no vis por, no odr, ns.

STARK SH.
 (4570-2119)

ROP (min/ft)
 Gamma (API)

11/15/2012
 weight: 9.2
 funnel vis: 51
 Filtrate API: 8.0
 Chloride: 5,700



4520: crm-tan inxln lm w/ poor inxln por, no odr, ns.
 4530: lght gry-grny cors xln lm, poor frac por, cemnt filled, no odr, ns.
 4540: aa, incrs tan inxln lm, poor por, no odr, ns.
 4550: incrs in gry, incrs in wht chlk, lm aa, no odr, ns.
 4560: mstly wht chlk no sig change.
 4570: tan cors xln lm, w/ lots of drk heavy minrl stns, no flour, no odr, ns.
 4580: aa, incrs in chlk and chlky lm, slght incrs in gry sh.
 4590: lots of blk carb sh.
 4600: mstly gry, brwn and blk carb sh, tan-gry inxln lm, poor por, no odr, ns.
 4610: lots of gry sh, tan-gry xln lm, poor xln por, no odr, ns.
 4620: aa, incrs in mlky chrt.
 4630: incrs in blk carb sh.
 4640: brwn-gry inxln lm, sli foss, no vis por, no odr, ns.
 4650: sig incrise in mlky chrt, sli foss, lm aa, few lght crm pack stn, fair intr prtcl por, no odr, ns.
 4660: mstly blk carb sh, lots of gry and maroon sh.
 4670: aa, shw of drk blk chrt, crm-tan xln lm, sli foss, poor por, no odr, ns.
 4680: incrs in wht chlk & crm chlky-lm, brwn inxln lm, semi dense, poor-no por, no odr, ns.
 4690: mstly gry sh, few gry shly lm, dense, no vis por, no odr, ns.
 4700: aa, crm-tan inxln lm, foss, poor-no por, no odr, ns.
 4710: incrs in gry sh, lm aa, few gry inxln lm, poor inxln por, no odr, ns.
 4720: aa, no sig change.
 4730: mstly chlk and chlky lm, v. chlky smple, brwn inxln lm, poor frac por, no odr, ns.

