

LOG-TECH



Gamma Ray Correlation Log

DIGITAL LOG

Ph. (785) 625-3858

API No.		Company Vess Oil Corp.					
		Well Tarpley #1					
		Field					
		County Finney			State Kansas		
Location		NE NW SW				Other Services	
Sec: 32		Twp: 22S		Rge: 30W		Plug	
Permanent Datum		Ground Level		Elevation 2853		Elevation	
Log Measured From		Kelly Bushing		7 Ft. Above Perm. Datum		K.B. 2860	
Drilling Measured From		Kelly Bushing				D.T. 2860	
						G.L. 2853	
Date		6/12/2002					
Run Number		One					
Type Log		GRCCL					
Depth Driller		/////					
Depth Logger		/////					
Bottom Logged Interval		4716					
Top Logged Interval		3500					
Type Fluid In Hole		Oil & Water					
Salinity, PPM CL		/////					
Density		/////					
Level		3700					
Max. Rec. Temp. F		125					
Operating Rig Time		1 Hour					
Equipment -- Location		008		Pratt			
Recorded By		Richard Bollig					
Witnessed By		Casey Coats					
Borehole Record				Casing Record			
Run No.	Bit	From	To	Size	Wgt.	From	To
				4.5			

<< Fold Here >>

All interpretations are opinions based on inferences from electrical or other measurements and we cannot and do not guarantee the accuracy or correctness of any interpretation, and we shall not, except in the case of gross or willful negligence on our part, be liable or responsible for any loss, costs, damages, or expenses incurred or sustained by anyone resulting from any interpretation made by any of our officers, agents or employees. These interpretations are also subject to our general terms and conditions set out in our current Price Schedule.

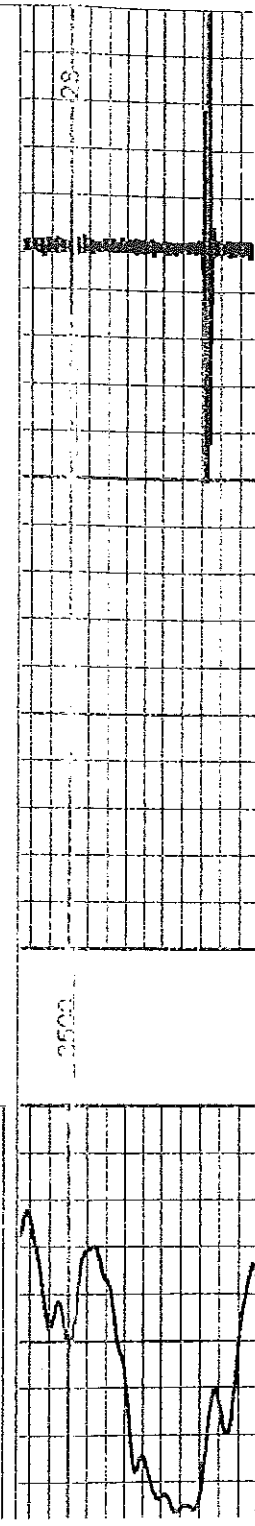
Comments

Thank you for using Log-Tech, Inc.
(785) 625-3858

Hiway 156 east of Garden City to Little
Mennonite Road , 1.5 North , East into

Database File: vess.db
 Dataset Pathname: gammagun/pass3
 Presentation Format: gr-cci
 Dataset Creation: Wed Jun 12 09:46:07 2002 by Log VER_6.0
 Started by: Depth in Feet scaled 1:240

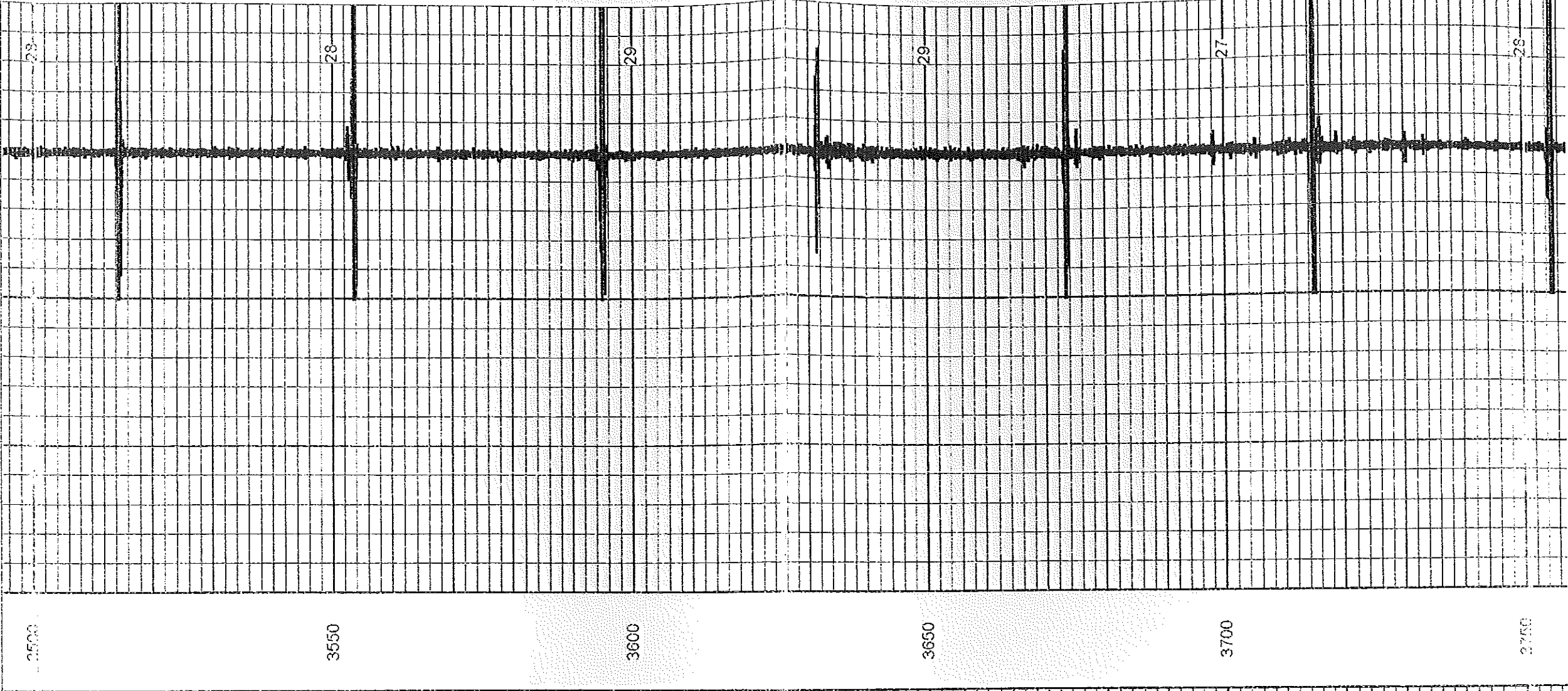
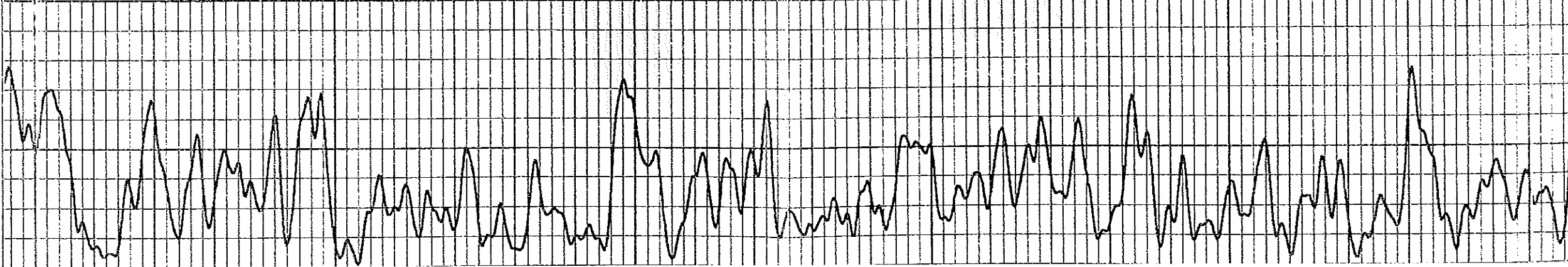
Gamma Ray (GAPI) 150
 Item (lb) 5000



11/11/00 07. 04901 011 1 001 00000 1.2770

Gamma Ray (GAPI)
lfen (lb)

2 Casing Collars -2



2750

3800

3850

3900

3950

4000

28

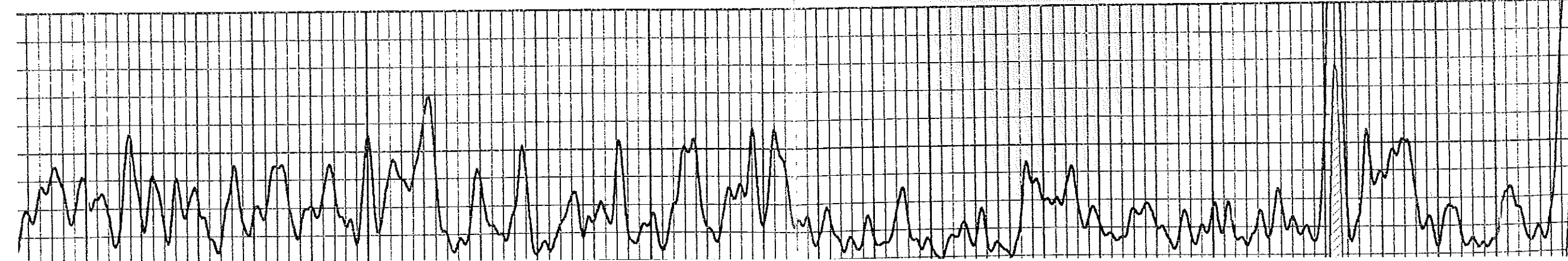
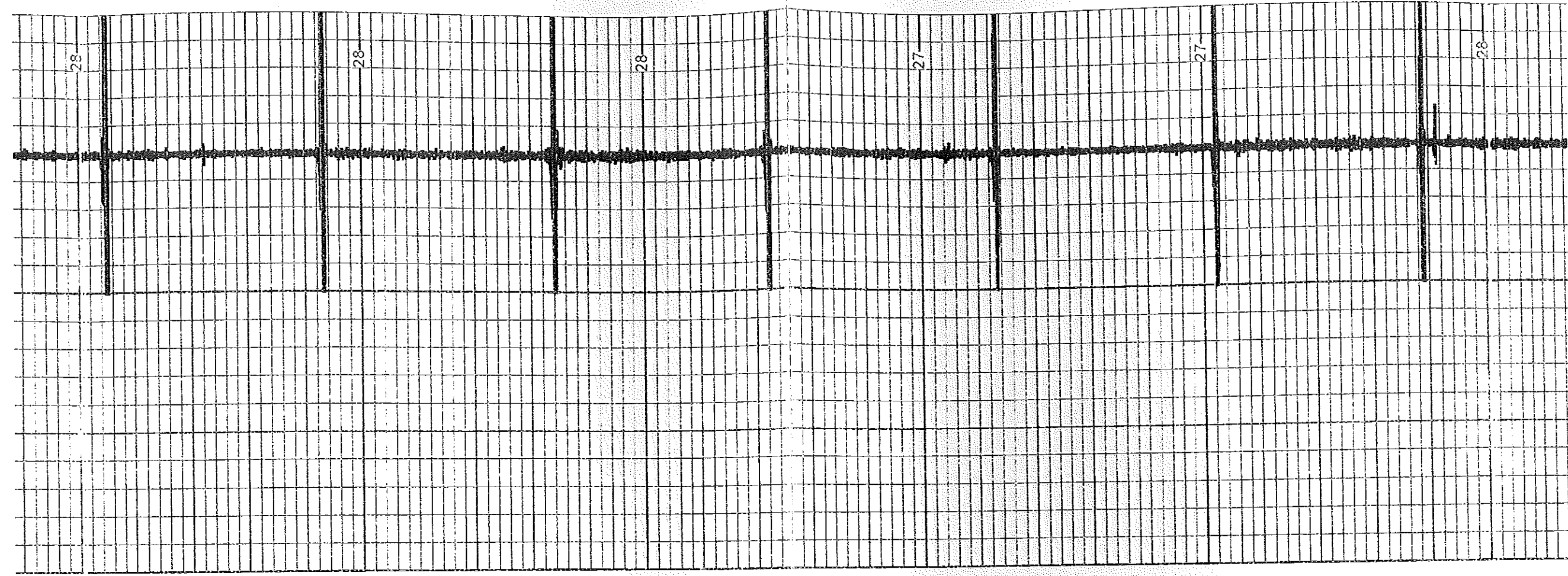
28

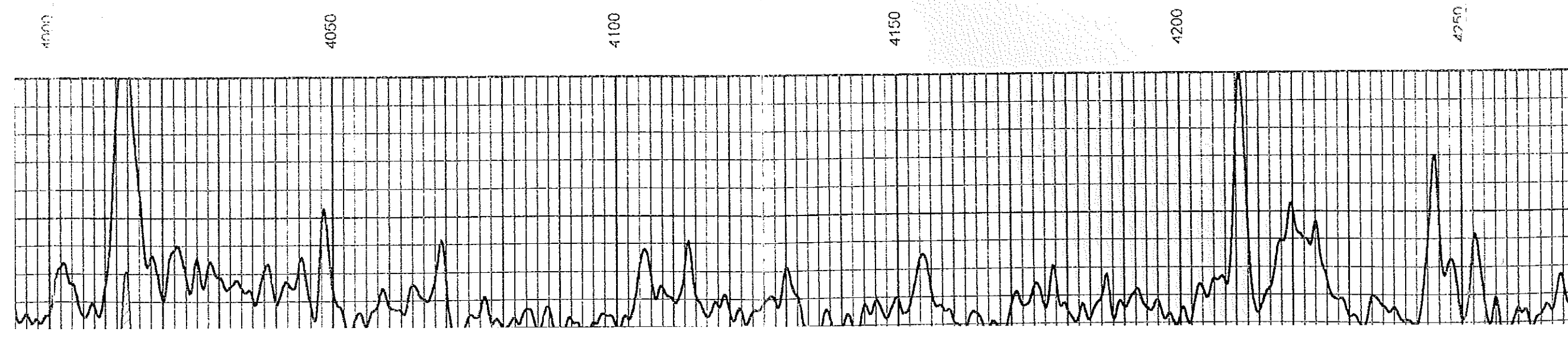
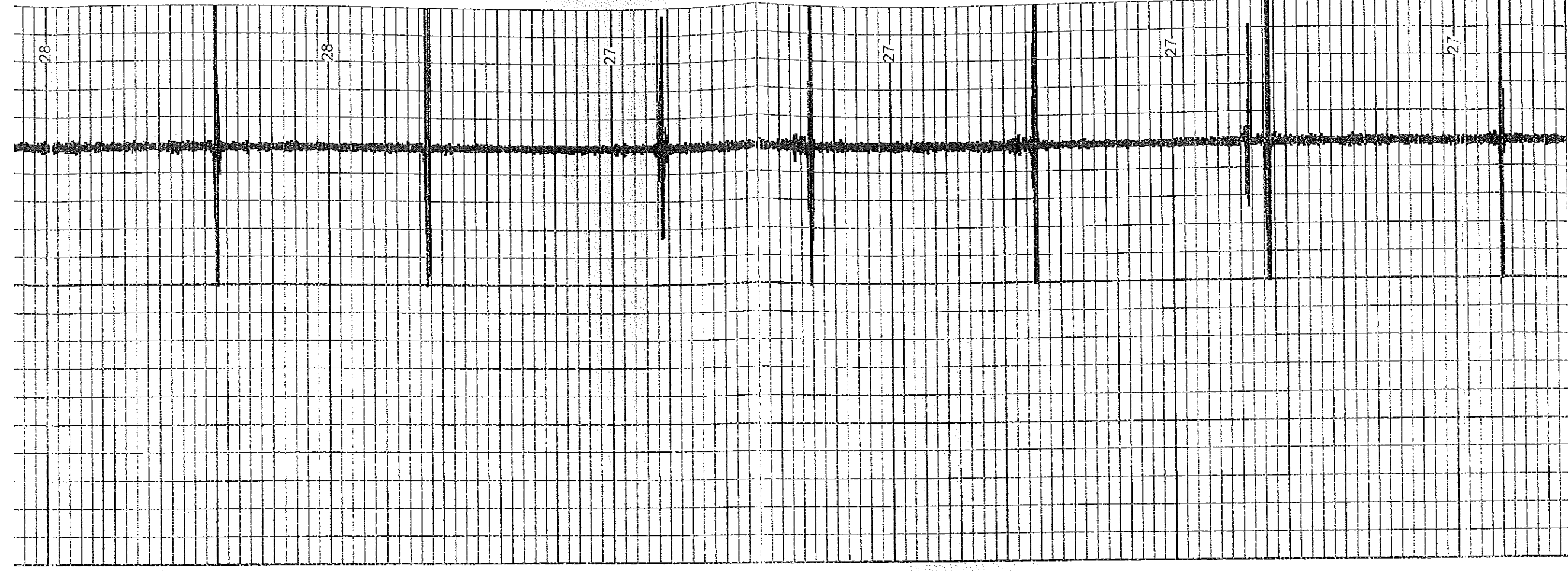
28

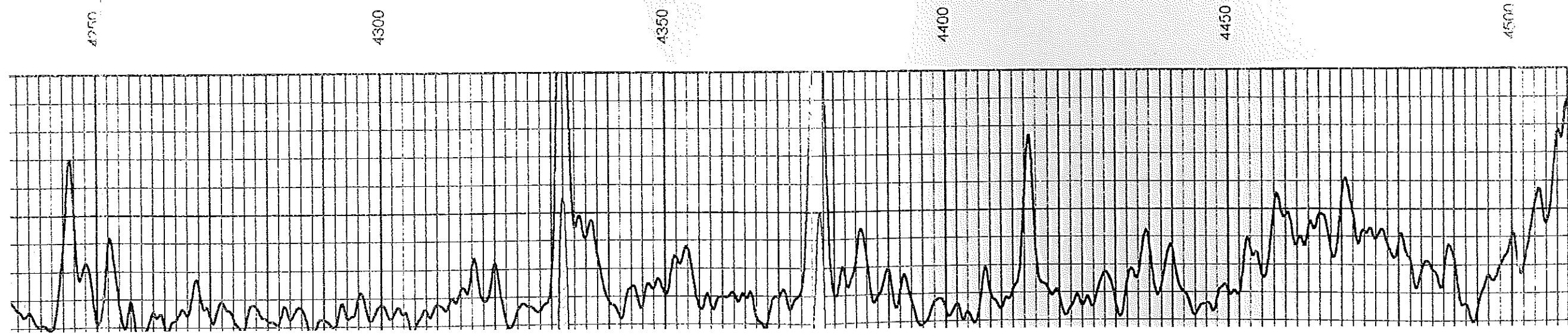
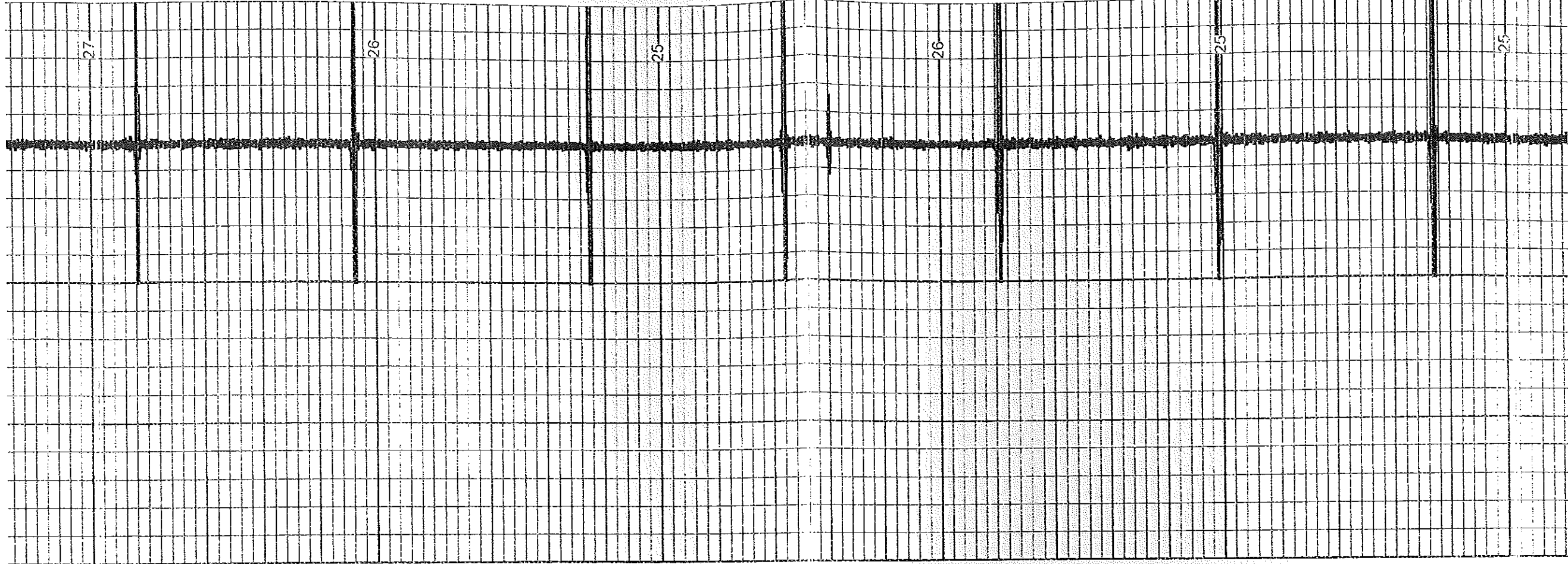
27

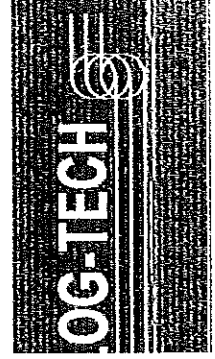
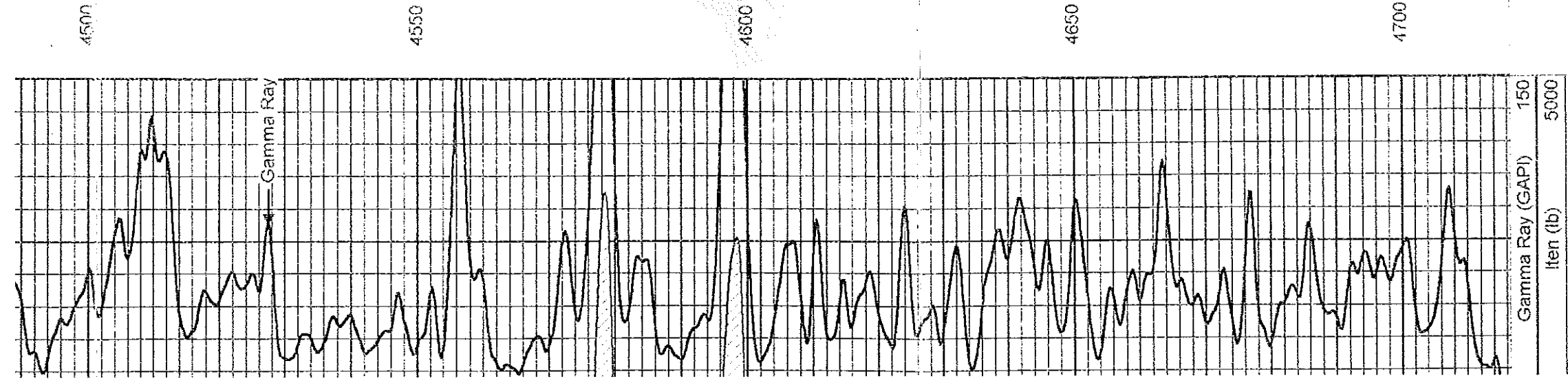
27

28









Repeat Section