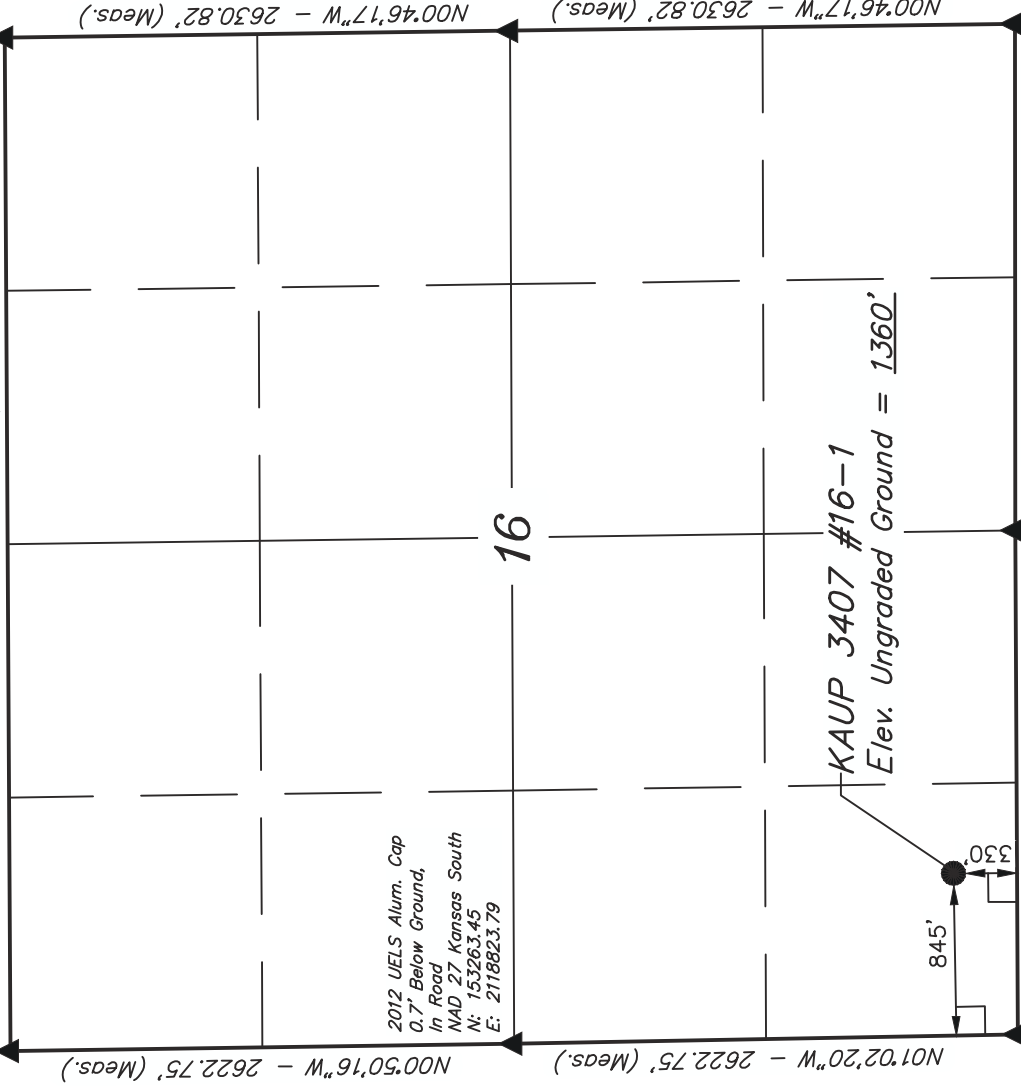


**T34S, R7W, 6th P.M.**

2012 UELS Alum. Cap  
0.2' Below Ground,  
In Road  
NAD 27 Kansas South  
N: 155938.12  
E: 21124053.30

Concrete Stone  
NAD 27 Kansas South  
N: 155885.83  
E: 2118774.51

S89°40'18"W - 5278.89' (Meas.)



**BASIS OF ELEVATION**

SPOT ELEVATION LOCATED AT THE NORTHEAST CORNER OF SECTION 22, T33S, R7W, 6th P.M. TAKEN FROM THE ANTHONY, QUADRANGLE, KANSAS, HARPER COUNTY, 7.5 MINUTE QUAD (TOPOGRAPHIC MAP) PUBLISHED BY THE UNITED STATES DEPARTMENT OF THE INTERIOR, GEOLOGICAL SURVEY. SAID ELEVATION IS MARKED AS BEING 1348 FEET.

**BASIS OF BEARINGS**

BASIS OF BEARINGS IS A G.P.S. OBSERVATION.



2012 UELS Alum. Cap  
0.2' Below Ground,  
In Road  
NAD 27 Kansas South  
N: 1553307.61  
E: 2124099.70



S C A L E

CERTIFICATE  
THIS IS TO CERTIFY THAT THE ABOVE PLAT WAS PREPARED FROM FIELD NOTES OF ACTUAL SURVEYS MADE BY ME OR UNDER MY SUPERVISION AND THAT THE SAME ARE TRUE AND CORRECT TO THE BEST OF MY KNOWLEDGE AND BELIEF.  
JUSTIN RICE  
REGISTERED LAND SURVEYOR  
REGISTRATION NO. N 1581  
STATE OF KANSAS SURVEYOR-12  
11-07-12 C.A.G.  
10-22-12 C.A.G.

5/8" Rebar 0.4'  
Below Ground,  
In Gravel Road  
NAD 27 Kansas South  
N: 150677.09  
E: 2124146.09

5/8" Rebar 0.3' High,  
Fence Post  
NAD 27 Kansas South  
N: 150665.23  
E: 2121507.20

Large Spike  
0.3' Below Ground,  
In Road  
NAD 27 Kansas South  
N: 150641.25  
E: 2118852.28

**UNTAH ENGINEERING & LAND SURVEYING**

85 SOUTH 200 EAST - VERNAL, UTAH 84078  
(435) 789-1017

SCALE	DATE SURVEYED:	DATE DRAWN:
1" = 1000'	06-27-12	07-12-12
PARTY	REFERENCES	
J.P. B.L. C.A.G.	G.L.O. PLAT	
WEATHER	FILE	
HOT	SGOMI	

NAD 83 (#16-1 SURFACE LOCATION)
LATITUDE = 37°04'50.19" (37.080608)
LONGITUDE = 98°05'23.93" (98.089981)
NAD 27 (#16-1 SURFACE LOCATION)
LATITUDE = 37°04'50.10" (37.080583)
LONGITUDE = 98°05'22.70" (98.089639)
STATE PLANE NAD 27 (KANSAS SOUTH)
N: 150979.31 E: 2119720.02

**LEGEND:**

- = 90° SYMBOL
- = PROPOSED WELL HEAD.
- ▲ = SECTION CORNERS LOCATED.