

T34S, R7W, 6th P.M.

SGOMI

Well location, KAUP 3407 #16-1H, located as shown in the SW 1/4 SW 1/4 of Section 16, T34S, R7W, 6th P.M., Harper County, Kansas.

BASIS OF ELEVATION

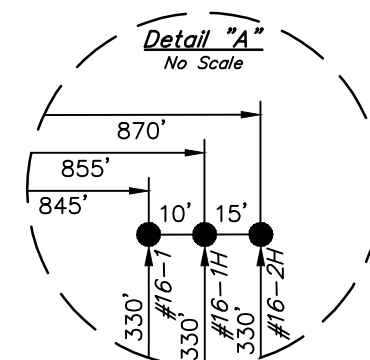
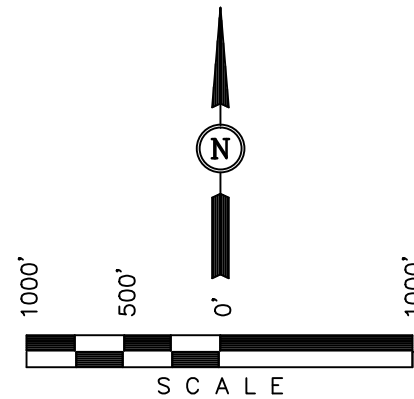
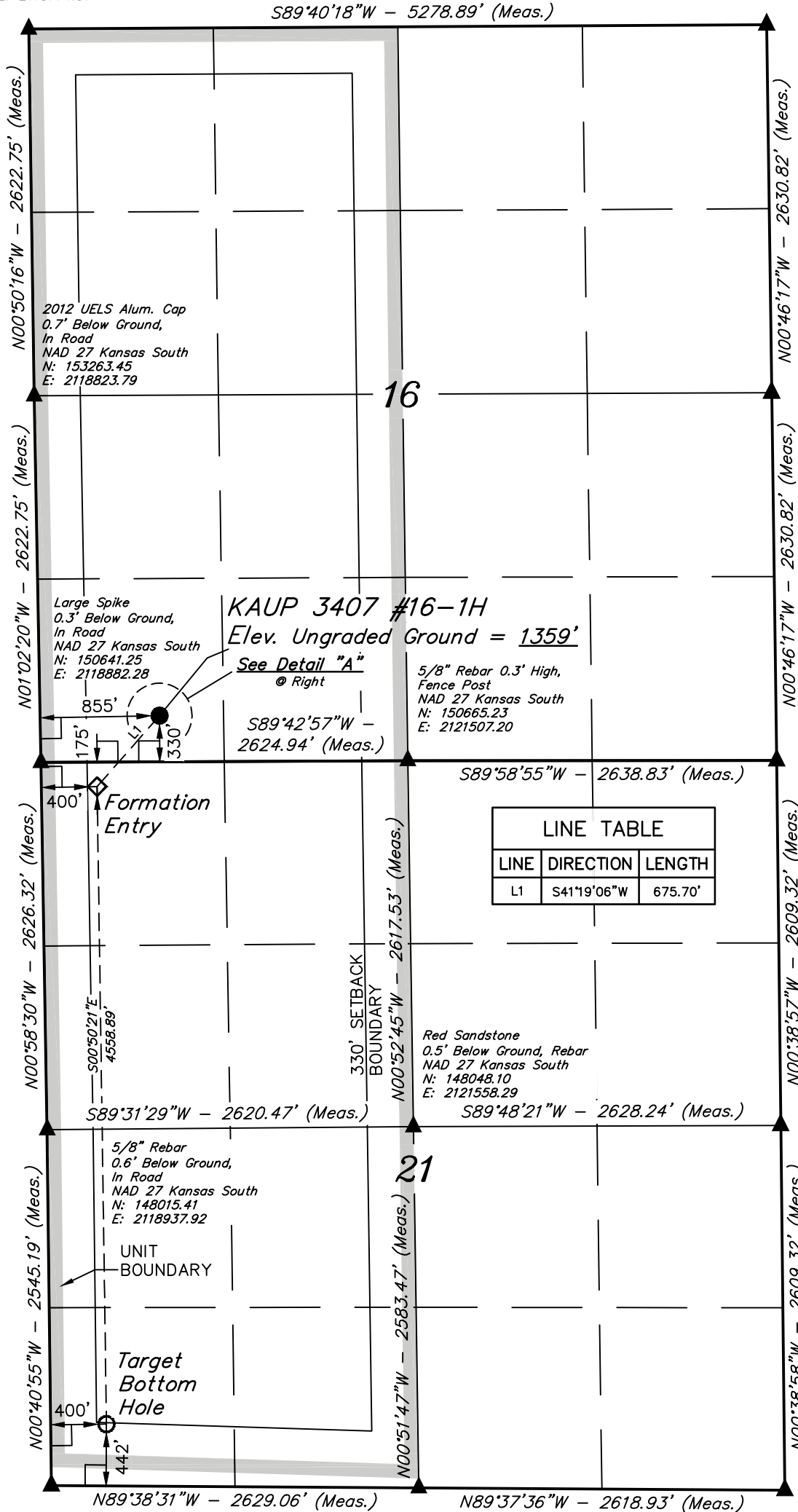
SPOT ELEVATION LOCATED AT THE NORTHEAST CORNER OF SECTION 22, T33S, R7W, 6th P.M. TAKEN FROM THE ANTHONY, QUADRANGLE, KANSAS, HARPER COUNTY, 7.5 MINUTE QUAD (TOPOGRAPHIC MAP) PUBLISHED BY THE UNITED STATES DEPARTMENT OF THE INTERIOR, GEOLOGICAL SURVEY. SAID ELEVATION IS MARKED AS BEING 1348 FEET.

BASIS OF BEARINGS

BASIS OF BEARINGS IS A G.P.S. OBSERVATION.

2012 UELS Alum. Cap
0.2' Below Ground,
In Road
NAD 27 Kansas South
N: 155938.12
E: 21124053.30

Concrete Stone
NAD 27 Kansas South
N: 155885.83
E: 2118774.51



2012 UELS Alum. Cap
0.2' Below Ground,
In Road
NAD 27 Kansas South
N: 1553307.61
E: 2124099.70

5/8" Rebar 0.4'
Below Ground,
in Gravel Road
NAD 27 Kansas South
N: 150677.09
E: 2124146.09

2012 UELS Alum. Cap
0.4' Below Ground,
In Road
NAD 27 Kansas South
N: 148067.98
E: 2124186.55

PK Nail in Asphalt
NAD 27 Kansas South
N: 145458.87
E: 2124227.01

CERTIFICATE

THIS IS TO CERTIFY THAT THE ABOVE PLAT WAS PREPARED FROM FIELD NOTES OF ACTUAL SURVEYS MADE BY ME OR UNDER MY SUPERVISION AND THAT THE SAME ARE TRUE AND CORRECT TO THE BEST OF MY KNOWLEDGE AND BELIEF.

REGISTERED LAND SURVEYOR
REGISTRATION NO. 1451
STATE OF KANSAS

REV: 02-21-13 C.A.G.
REV: 11-07-12 C.A.G.
REV: 10-22-12 C.A.G.

LEGEND:

- └─┘ = 90° SYMBOL
- = PROPOSED WELL HEAD.
- ▲ = SECTION CORNERS LOCATED.

UINTAH ENGINEERING & LAND SURVEYING
85 SOUTH 200 EAST - VERNAL, UTAH 84078
(435) 789-1017

NAD 83 (#16-1H TARGET BOTTOM HOLE) LATITUDE = 37°04'00.10" (37.066694) LONGITUDE = 98°05'28.50" (98.091250)	NAD 83 (#16-1H FORMATION ENTRY) LATITUDE = 37°04'45.17" (37.079214) LONGITUDE = 98°05'29.31" (98.091475)	NAD 83 (#16-1H SURFACE LOCATION) LATITUDE = 37°04'50.19" (37.080608) LONGITUDE = 98°05'23.80" (98.089944)	SCALE 1" = 1000'	DATE SURVEYED: 02-18-12	DATE DRAWN: 07-10-12
NAD 27 (#16-1H TARGET BOTTOM HOLE) LATITUDE = 37°04'00.02" (37.066672) LONGITUDE = 98°05'27.27" (98.090908)	NAD 27 (#16-1H FORMATION ENTRY) LATITUDE = 37°04'45.09" (37.079192) LONGITUDE = 98°05'28.08" (98.091133)	NAD 27 (#16-1H SURFACE LOCATION) LATITUDE = 37°04'50.10" (37.080583) LONGITUDE = 98°05'22.57" (98.089603)	PARTY J.P. B.L. C.A.G.	REFERENCES G.L.O. PLAT	
STATE PLANE NAD 27 (KANSAS SOUTH) N: 145911.65 E: 2119371.80	STATE PLANE NAD 27 (KANSAS SOUTH) N: 150469.92 E: 2119286.01	STATE PLANE NAD 27 (KANSAS SOUTH) N: 150979.29 E: 2119730.03	WEATHER HOT	FILE SGOMI	