

# T34S, R7W, 6th P.M.

SGOMI

Well location, KAUP 3407 #16-2H, located as shown in the SW 1/4 SW 1/4 of Section 16, T34S, R7W, 6th P.M., Harper County, Kansas.

## BASIS OF ELEVATION

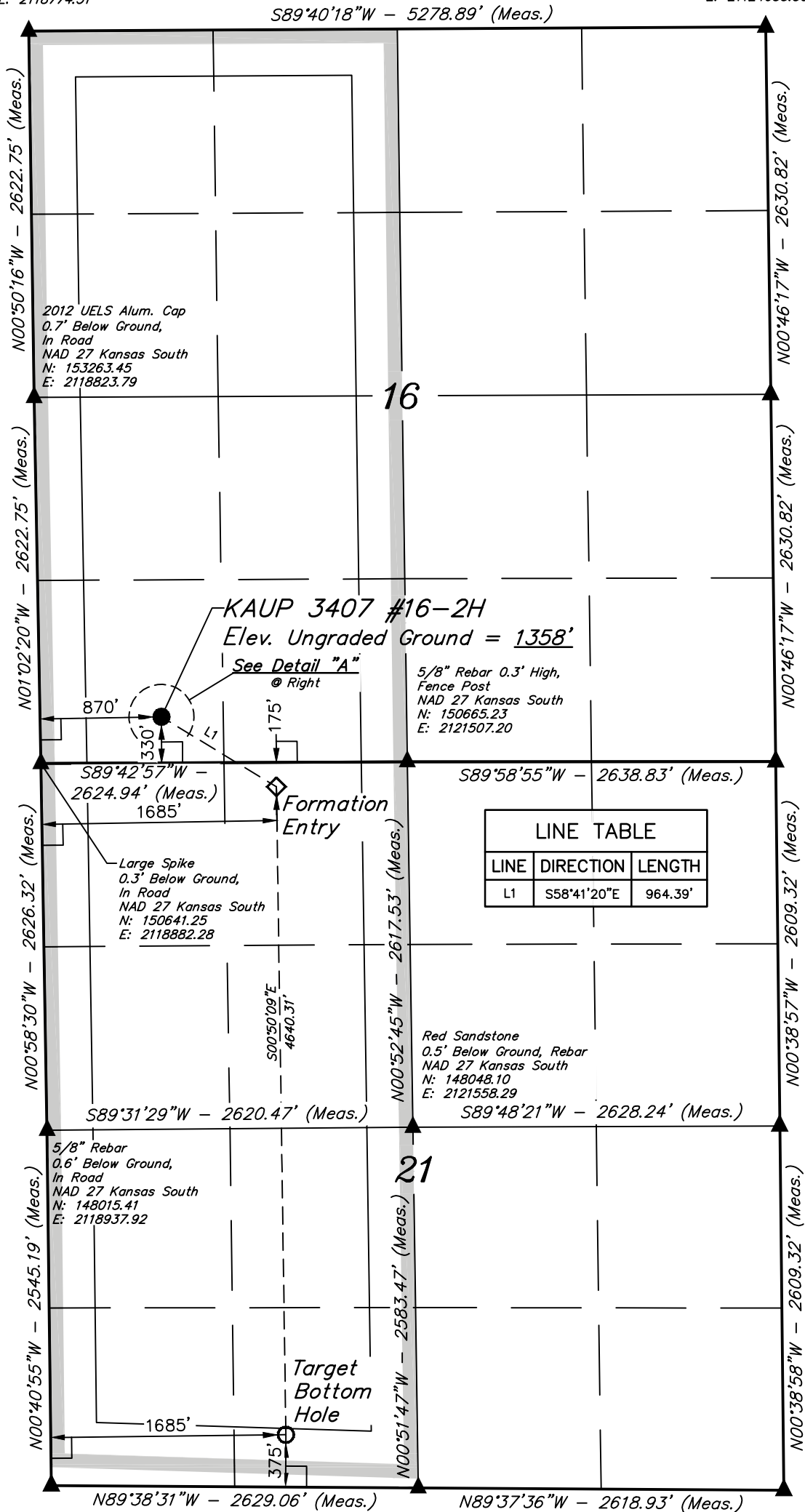
SPOT ELEVATION LOCATED AT THE NORTHEAST CORNER OF SECTION 22, T33S, R7W, 6th P.M. TAKEN FROM THE ANTHONY, QUADRANGLE, KANSAS, HARPER COUNTY, 7.5 MINUTE QUAD (TOPOGRAPHIC MAP) PUBLISHED BY THE UNITED STATES DEPARTMENT OF THE INTERIOR, GEOLOGICAL SURVEY. SAID ELEVATION IS MARKED AS BEING 1348 FEET.

## BASIS OF BEARINGS

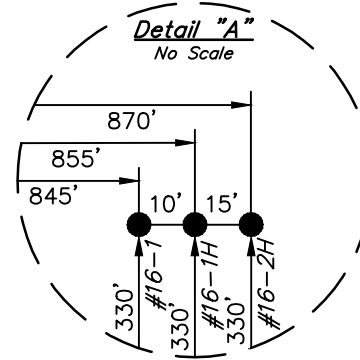
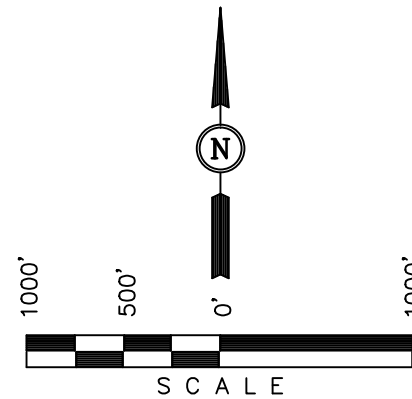
BASIS OF BEARINGS IS A G.P.S. OBSERVATION.

2012 UELS Alum. Cap  
0.2' Below Ground,  
In Road  
NAD 27 Kansas South  
N: 155938.12  
E: 21124053.30

Concrete Stone  
NAD 27 Kansas South  
N: 155885.83  
E: 2118774.51



LINE TABLE		
LINE	DIRECTION	LENGTH
L1	S58°41'20"E	964.39'



2012 UELS Alum. Cap  
0.2' Below Ground,  
In Road  
NAD 27 Kansas South  
N: 1553307.61  
E: 2124099.70

5/8" Rebar 0.4'  
Below Ground,  
in Gravel Road  
NAD 27 Kansas South  
N: 150677.09  
E: 2124146.09

2012 UELS Alum. Cap  
0.4' Below Ground,  
In Road  
NAD 27 Kansas South  
N: 148067.98  
E: 2124186.55

PK Nail in Asphalt  
NAD 27 Kansas South  
N: 145458.87  
E: 2124227.01

5/8" Rebar  
0.3' Below Ground,  
In Road  
NAD 27 Kansas South  
N: 145470.44  
E: 2118978.83

5/8" Rebar  
0.2' Below Ground,  
In Gravel Road  
NAD 27 Kansas South  
N: 145465.00  
E: 2121607.99

- LEGEND:**
- └─┘ = 90° SYMBOL
  - = PROPOSED WELL HEAD.
  - ▲ = SECTION CORNERS LOCATED.

CERTIFICATE

THIS IS TO CERTIFY THAT THE ABOVE PLAT WAS PREPARED FROM FIELD NOTES OF ACTUAL SURVEYS MADE BY ME OR UNDER MY SUPERVISION AND THAT THE SAME ARE TRUE AND CORRECT TO THE BEST OF MY KNOWLEDGE AND BELIEF.

*Justin L. Smith*  
REGISTERED LAND SURVEYOR  
REGISTRATION NO. 1451  
STATE OF KANSAS

REV: 02-21-13 C.A.G.  
REV: 11-07-12 C.A.G.  
REV: 10-22-12 C.A.G.

**UINTAH ENGINEERING & LAND SURVEYING**  
85 SOUTH 200 EAST - VERNAL, UTAH 84078  
(435) 789-1017

SCALE 1" = 1000'	DATE SURVEYED: 02-18-12	DATE DRAWN: 07-10-12
PARTY J.P. B.L. C.A.G.	REFERENCES G.L.O. PLAT	
WEATHER HOT	FILE SGOMI	

NAD 83 (#16-2H TARGET BOTTOM HOLE)	NAD 83 (#16-2H FORMATION ENTRY)	NAD 83 (#16-2H SURFACE LOCATION)
LATITUDE = 37°03'59.36" (37.066489)	LATITUDE = 37°04'45.23" (37.079231)	LATITUDE = 37°04'50.19" (37.080608)
LONGITUDE = 98°05'12.63" (98.086842)	LONGITUDE = 98°05'13.45" (98.087069)	LONGITUDE = 98°05'23.62" (98.089894)
NAD 27 (#16-2H TARGET BOTTOM HOLE)	NAD 27 (#16-2H FORMATION ENTRY)	NAD 27 (#16-2H SURFACE LOCATION)
LATITUDE = 37°03'59.27" (37.066464)	LATITUDE = 37°04'45.15" (37.079208)	LATITUDE = 37°04'50.10" (37.080583)
LONGITUDE = 98°05'11.40" (98.086500)	LONGITUDE = 98°05'12.22" (98.086728)	LONGITUDE = 98°05'22.39" (98.089553)
STATE PLANE NAD 27 (KANSAS SOUTH) N: 145841.98 E: 2120658.14	STATE PLANE NAD 27 (KANSAS SOUTH) N: 150481.66 E: 2120571.10	STATE PLANE NAD 27 (KANSAS SOUTH) N: 150979.42 E: 2119745.05