

# ADVANTAGE ELEVATIONS

OIL FIELD SURVEYORS

BOX 8604 - PRATT, KS 67124  
(620) 672-6491

21131  
INVOICE NO.

N-10 Exploration

OPERATOR

Barber COUNTY      10 S      34s T      11w R

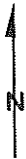
D-10 NO.

Medicine River Ranch

FARM

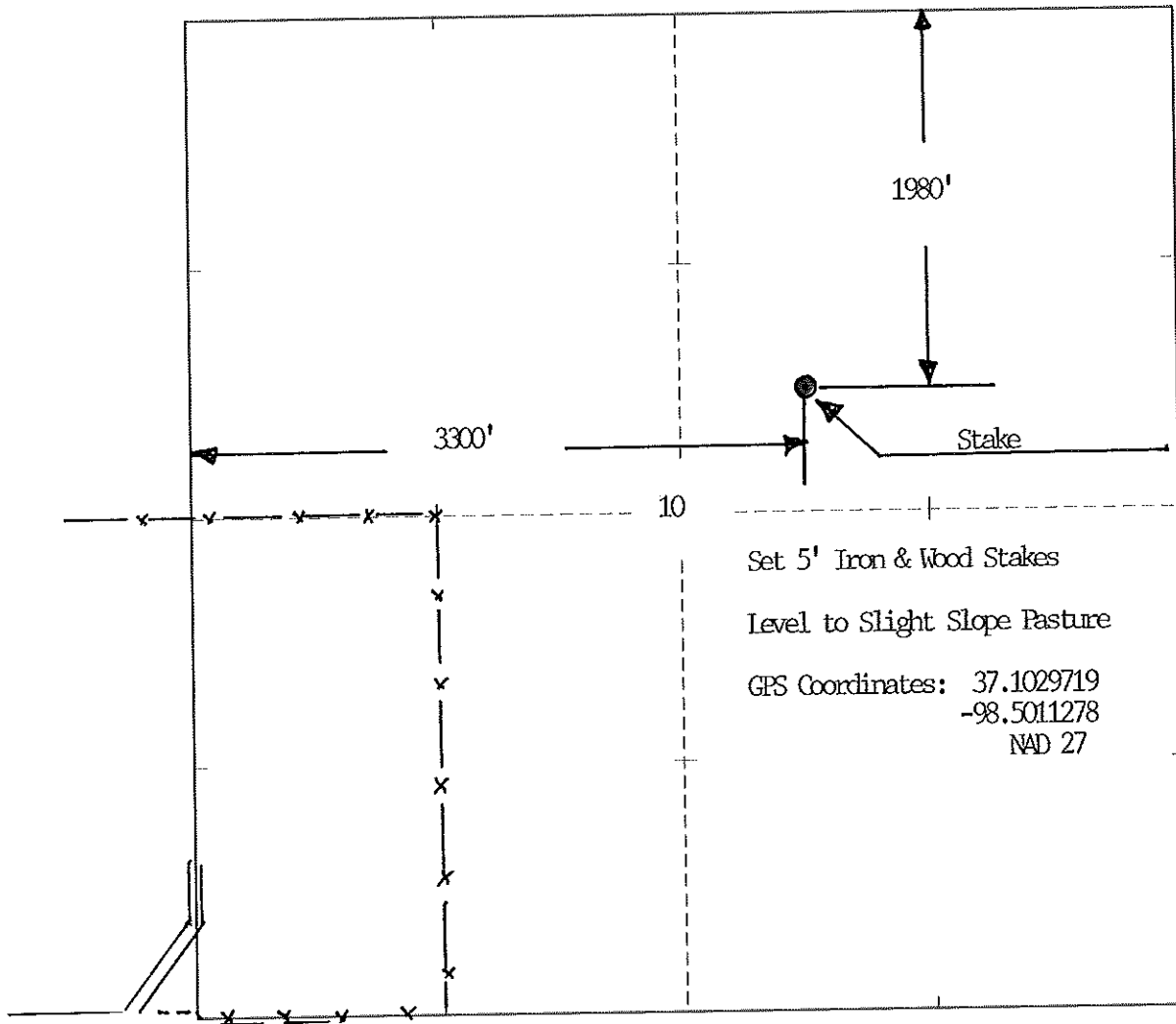
C S W NE 1980 ENL & 3300 FWL of Section  
LOCATION

ELEVATION: 1341' GR

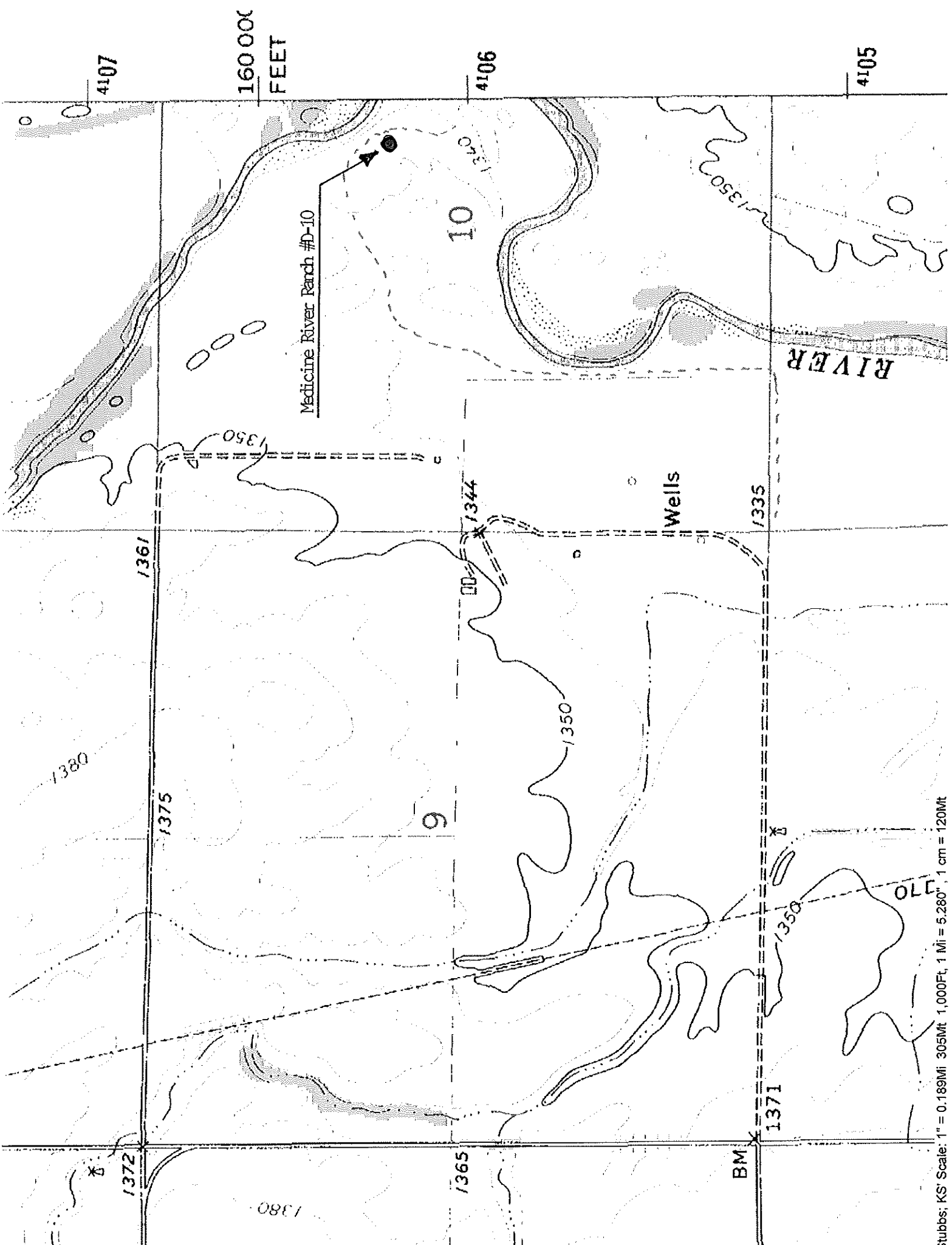

 N-10 Exploration  
 P.O. Box 195  
 Attica, Kansas 67009

AUTHORIZED BY: Randy Newberry

SCALE: 1" = 1000'



DATE STAKED: 02/13/2013



4107

160 000  
FEET

4106

4105

Medicine River Ranch #D-10

10

RIVER

Wells

9

770

BM

Stubbs, KS' Scale: 1" = 0.189Mi, 305Mt, 1 Mi = 5.280", 1 cm = 120Mt