



## DRILL STEM TEST REPORT

Prepared For: **Primal Energy O&G**

21021 Springbrook Plaza Drive  
Texas 77379

ATTN: Tim Hedrick

### **Soeken #1**

### **10-19s-9w-Rice**

Start Date: 2012.11.07 @ 11:52:00

End Date: 2012.11.07 @ 18:45:30

Job Ticket #: 17868                      DST #: 4

Superior Testers Enterprises LLC  
PO Box 138 Great Bend KS 67530  
1-800-792-6902

Printed: 2012.11.07 @ 17:00:37







# DRILL STEM TEST REPORT

**TOOL DIAGRAM**

Primal Energy O&G  
 21021 Springbrook Plaza Drive  
 Texas 77379  
 ATTN: Tim Hedrick

**10-19s-9w-Rice**  
**Soeken #1**  
 Job Ticket: 17868      **DST#: 4**  
 Test Start: 2012.11.07 @ 11:52:00

**Tool Information**

Drill Pipe:	Length: 3068.00 ft	Diameter: 3.80 inches	Volume: 43.04 bbl	Tool Weight: 2000.00 lb
Heavy Wt. Pipe:	Length: 0.00 ft	Diameter: 0.00 inches	Volume: 0.00 bbl	Weight set on Packer: 20000.00 lb
Drill Collar:	Length: 0.00 ft	Diameter: 0.00 inches	Volume: 0.00 bbl	Weight to Pull Loose: 62000.00 lb
			<u>Total Volume: 43.04 bbl</u>	Tool Chased 6.00 ft
Drill Pipe Above KB:	28.00 ft			String Weight: Initial 51000.00 lb
Depth to Top Packer:	3068.00 ft			Final 51000.00 lb
Depth to Bottom Packer:	ft			
Interval between Packers:	18.00 ft			
Tool Length:	46.00 ft			
Number of Packers:	2	Diameter: 6.75 inches		

Tool Comments:

Tool Description	Length (ft)	Serial No.	Position	Depth (ft)	Accum. Lengths
Shut-In Tool	5.00			3045.00	
Hydraulic Tool	5.00			3050.00	
Jars	6.00			3056.00	
Safety Joint	2.00			3058.00	
Packer	5.00			3063.00	28.00      Bottom Of Top Packer
Packer	5.00			3068.00	
Anchor	13.00			3081.00	
Recorder	1.00	6663	Inside	3082.00	
Recorder	1.00	8400	Outside	3083.00	
Bull Plug	3.00			3086.00	18.00      Bottom Packers & Anchor
<b>Total Tool Length:</b>	<b>46.00</b>				



# DRILL STEM TEST REPORT

## FLUID SUMMARY

Primal Energy O&G  
 21021 Springbrook Plaza Drive  
 Texas 77379  
 ATTN: Tim Hedrick

**10-19s-9w-Rice**  
**Soeken #1**  
 Job Ticket: 17868      **DST#: 4**  
 Test Start: 2012.11.07 @ 11:52:00

### Mud and Cushion Information

Mud Type: Gel Chem	Cushion Type:	Oil API:	deg API
Mud Weight: 9.00 lb/gal	Cushion Length: ft	Water Salinity:	ppm
Viscosity: 47.00 sec/qt	Cushion Volume: bbl		
Water Loss: 9.60 in <sup>3</sup>	Gas Cushion Type:		
Resistivity: ohm.m	Gas Cushion Pressure: psia		
Salinity: 9200.00 ppm			
Filter Cake: 1.00 inches			

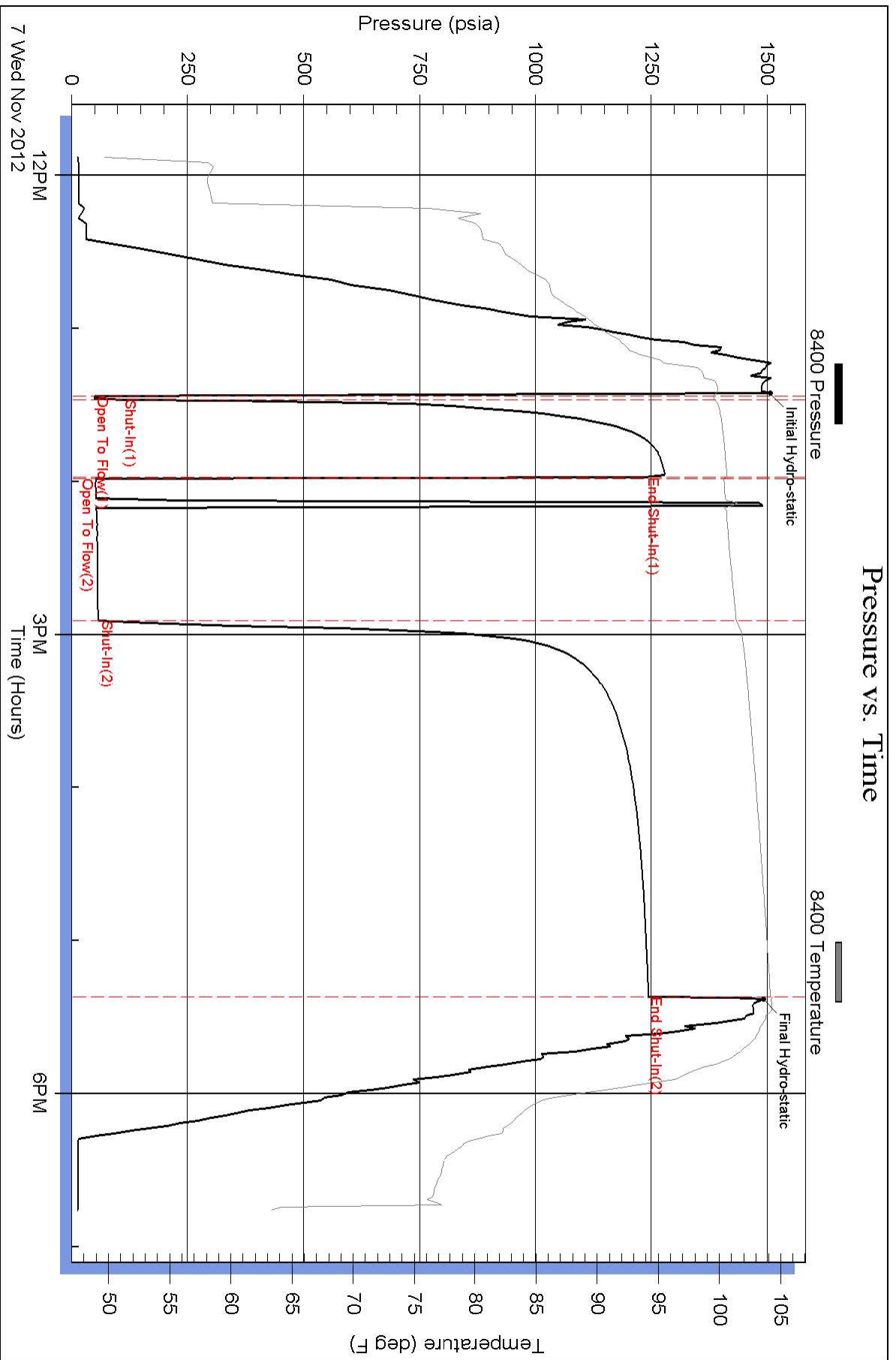
### Recovery Information

Recovery Table

Length ft	Description	Volume bbl
25.00	Mud 100%	0.351

Total Length: 25.00 ft      Total Volume: 0.351 bbl  
 Num Fluid Samples: 0      Num Gas Bombs: 0      Serial #:  
 Laboratory Name:      Laboratory Location:  
 Recovery Comments:

### Pressure vs. Time



### Pressure vs. Time

