

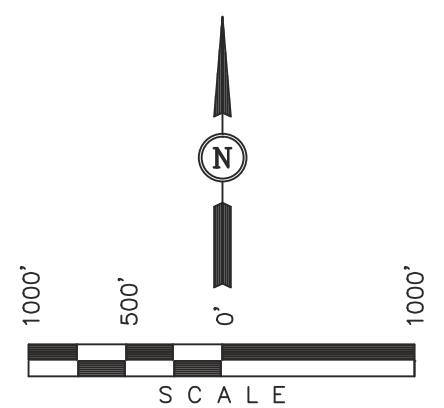
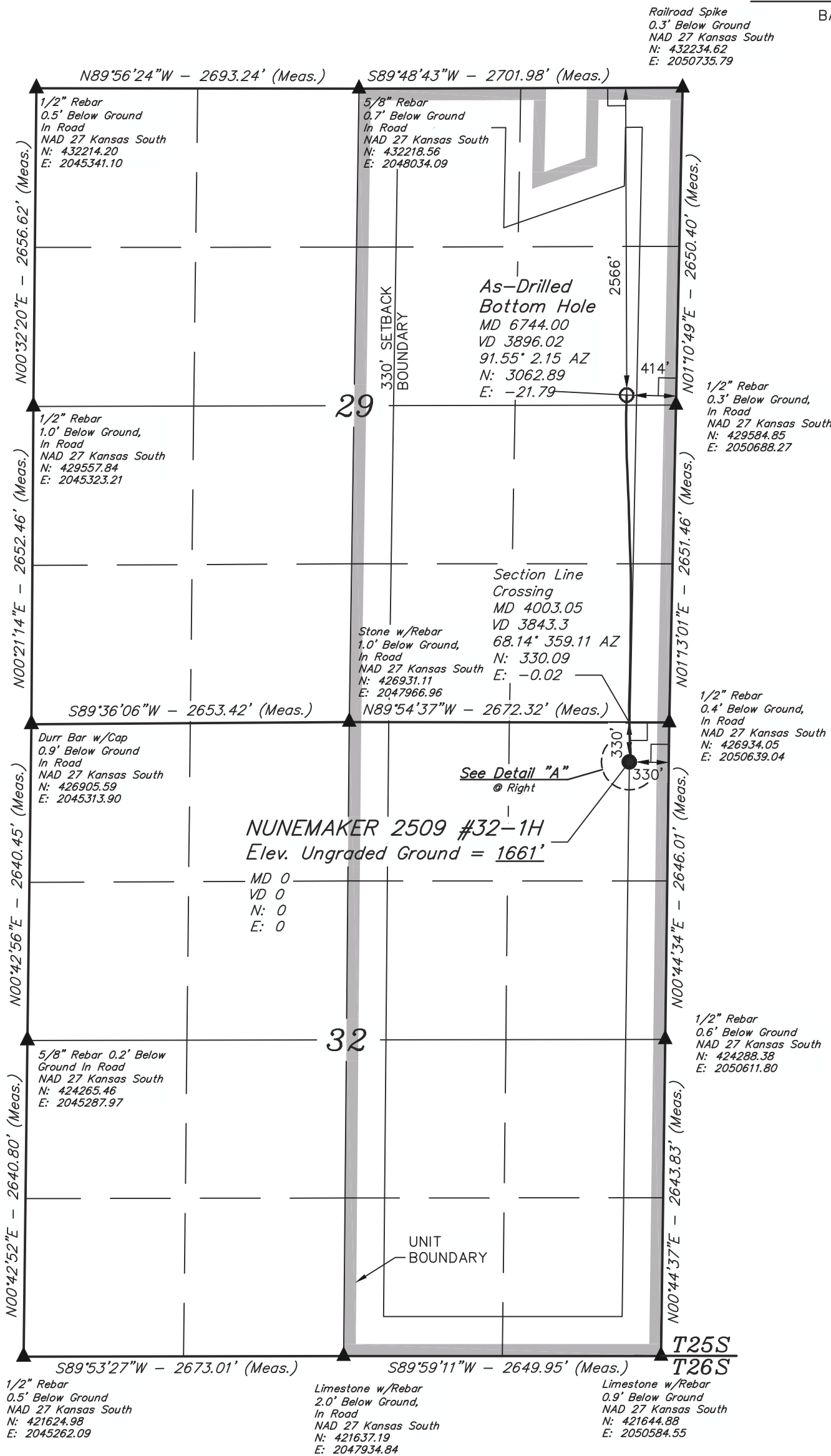
Well location, NUNEMAKER 2509 #32-1H, located as shown in the NE 1/4 NE 1/4 of Section 32, T25S, R9W, 6th P.M., Reno County, Kansas.

BASIS OF ELEVATION

SPOT ELEVATION LOCATED AT THE SW CORNER OF SECTION 18, T23S, R8W, 6th P.M. TAKEN FROM THE ALDEN SE, QUADRANGLE, KANSAS, RENO COUNTY, 7.5 MINUTE QUAD (TOPOGRAPHIC MAP) PUBLISHED BY THE UNITED STATES DEPARTMENT OF THE INTERIOR, GEOLOGICAL SURVEY, SAID ELEVATION IS MARKED AS BEING 1688 FEET.

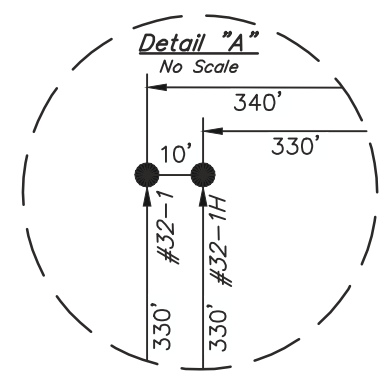
BASIS OF BEARINGS

BASIS OF BEARINGS IS A G.P.S. OBSERVATION.

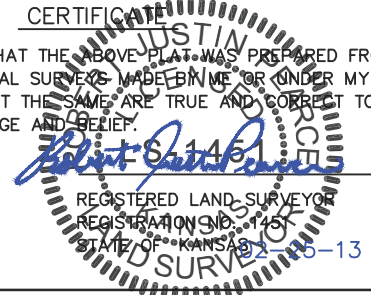


LEGEND:

- └─┘ = 90° SYMBOL
- = PROPOSED WELL HEAD.
- ▲ = SECTION CORNERS LOCATED.



CERTIFICATE OF ACCURACY  
 THIS IS TO CERTIFY THAT THE ABOVE PLAT WAS PREPARED FROM FIELD NOTES OF ACTUAL SURVEYS MADE BY ME OR UNDER MY SUPERVISION AND THAT THE SAME ARE TRUE AND CORRECT TO THE BEST OF MY KNOWLEDGE AND BELIEF.



<b>UINTAH ENGINEERING &amp; LAND SURVEYING</b> 85 SOUTH 200 EAST - VERNAL, UTAH 84078 (435) 789-1017		
SCALE 1" = 1000'	DATE SURVEYED: 01-22-13	DATE DRAWN: 02-21-13
PARTY J.P. C.B. C.A.G.	REFERENCES G.L.O. PLAT	
WEATHER COLD	FILE SGOMI	

<b>NAD 83 (#32-1H AS-DRILLED BOTTOM HOLE)</b> LATITUDE = 37°50'47.71" (37.846586) LONGITUDE = 98°19'34.44" (98.326233)	<b>NAD 83 (#32-1H SURFACE LOCATION)</b> LATITUDE = 37°50'17.43" (37.838175) LONGITUDE = 98°19'34.14" (98.326150)
<b>NAD 27 (#32-1H AS-DRILLED BOTTOM HOLE)</b> LATITUDE = 37°50'47.66" (37.846572) LONGITUDE = 98°19'33.19" (98.325886) STATE PLANE NAD 27 (KANSAS SOUTH) N: 429666.21 E: 2050275.76	<b>NAD 27 (#32-1H SURFACE LOCATION)</b> LATITUDE = 37°50'17.38" (37.838161) LONGITUDE = 98°19'32.89" (98.325803) STATE PLANE NAD 27 (KANSAS SOUTH) N: 426603.61 E: 2050305.72