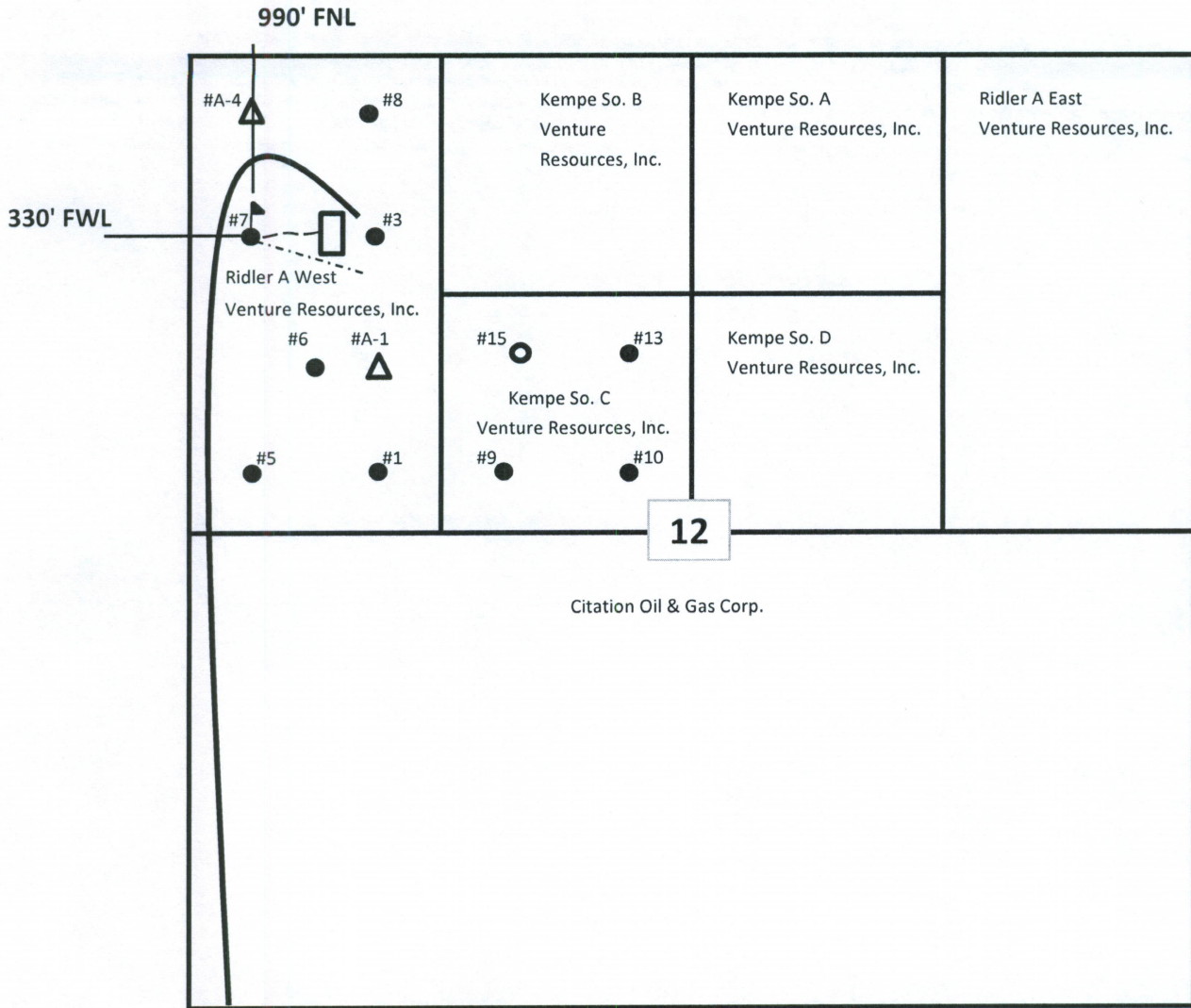






NOTICE OF INTENT TO DRILL - PLAT

Venture Resources, Inc.
 Ridler A West #7
 990' FNL & 330' FWL
 C SW/4 NW/4 NW/4 Sec. 12, T11S-R18W
 Ellis County, KS
 Bemis-Shutts Field



-  Tank Battery
-  Lease Road
-  Electric Line
-  Pipeline