



**TRILOBITE
TESTING, INC.**

DRILL STEM TEST REPORT

Eternity Exploration, Inc.

11-10s-26w, Sheridan, KS

338 Spyglass Dr
Coppell TX 75019

C Bittel #1

Job Ticket: 48555

DST#: 1

ATTN: Scott Alberg

Test Start: 2012.08.21 @ 22:15:00

GENERAL INFORMATION:

Formation: **Tor, KC'A-C'**

Deviated: No Whipstock: ft (KB)

Time Tool Opened: 01:27:00

Time Test Ended: 06:32:30

Test Type: Conventional Bottom Hole (Initial)

Tester: Brett Dickinson

Unit No: 59

Interval: 3815.00 ft (KB) To 3910.00 ft (KB) (TVD)

Reference Elevations: 2599.00 ft (KB)

Total Depth: 3910.00 ft (KB) (TVD)

2594.00 ft (CF)

Hole Diameter: 7.88 inches Hole Condition: Fair

KB to GR/CF: 5.00 ft

Serial #: 6753

Inside

Press @ Run Depth: 182.71 psig @ 3816.00 ft (KB)

Capacity: 8000.00 psig

Start Date: 2012.08.21

End Date:

2012.08.22

Last Calib.:

2012.08.22

Start Time: 22:15:05

End Time:

06:32:29

Time On Btm:

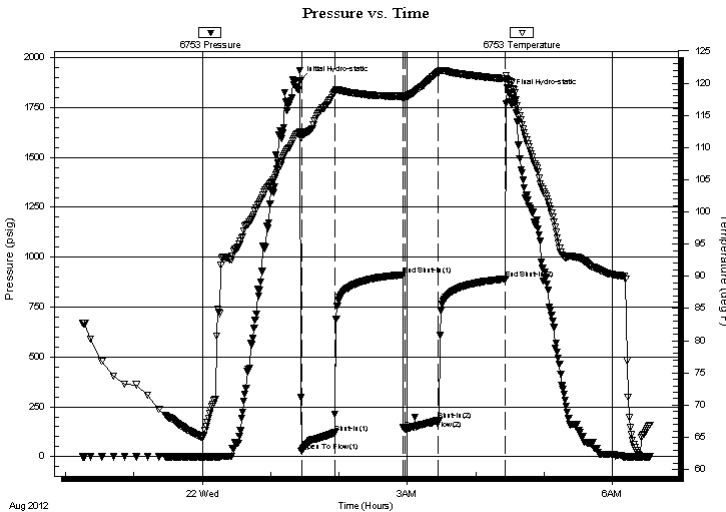
2012.08.22 @ 01:26:00

Time Off Btm:

2012.08.22 @ 04:29:30

TEST COMMENT: IF-BOB in 20min
IS- No blow
FF-BOB in 30min
FS- No blow

PRESSURE SUMMARY



Time (Min.)	Pressure (psig)	Temp (deg F)	Annotation
0	1883.81	112.42	Initial Hydro-static
1	27.44	111.99	Open To Flow (1)
30	119.37	118.49	Shut-In(1)
90	912.08	117.98	End Shut-In(1)
92	137.60	117.85	Open To Flow (2)
121	182.71	121.61	Shut-In(2)
180	891.18	120.68	End Shut-In(2)
184	1819.04	120.31	Final Hydro-static

Recovery

Length (ft)	Description	Volume (bbl)
120.00	V SOMCW 5%O 85%W 10%M	0.59
215.00	SOMCW 10%O 40%M 50%W	3.02

Gas Rates

Choke (inches)	Pressure (psig)	Gas Rate (Mcf/d)



**TRILOBITE
TESTING, INC.**

DRILL STEM TEST REPORT

FLUID SUMMARY

Eternity Exploration, Inc.

11-10s-26w, Sheridan, KS

338 Spyglass Dr
Coppell TX 75019

C Bittel #1

Job Ticket: 48555

DST#: 1

ATTN: Scott Alberg

Test Start: 2012.08.21 @ 22:15:00

Mud and Cushion Information

Mud Type: Gel Chem

Cushion Type:

Oil API:

deg API

Mud Weight: 9.00 lb/gal

Cushion Length:

ft

Water Salinity:

75000 ppm

Viscosity: 78.00 sec/qt

Cushion Volume:

bbbl

Water Loss: 7.60 in³

Gas Cushion Type:

Resistivity: ohm.m

Gas Cushion Pressure:

psig

Salinity: 2300.00 ppm

Filter Cake: inches

Recovery Information

Recovery Table

Length ft	Description	Volume bbbl
120.00	VSOMCW 5%O 85%W 10%M	0.590
215.00	SOMCW 10%O 40%M 50%W	3.016

Total Length: 335.00 ft

Total Volume: 3.606 bbl

Num Fluid Samples: 0

Num Gas Bombs: 0

Serial #:

Laboratory Name:

Laboratory Location:

Recovery Comments: RW .12 @ 62

