



DRILL STEM TEST REPORT

Prepared For: **Downing-Nelson Oil Co Inc**

PO Box 1019
Hays KS 67601

ATTN: Ron Nelson

Urban Brothers #1-24

24-16s-17w Rush,KS

Start Date: 2013.02.06 @ 11:30:23

End Date: 2013.02.06 @ 18:12:02

Job Ticket #: 51646 DST #: 1

Trilobite Testing, Inc

PO Box 362 Hays, KS 67601

ph: 785-625-4778 fax: 785-625-5620

Printed: 2013.02.11 @ 12:02:50



TRILOBITE TESTING, INC.

DRILL STEM TEST REPORT

Dow ning-Nelson Oil Co Inc

24-16s-17w Rush,KS

PO Box 1019
Hays KS 67601

Urban Brothers #1-24

Job Ticket: 51646

DST#: 1

ATTN: Ron Nelson

Test Start: 2013.02.06 @ 11:30:23

GENERAL INFORMATION:

Formation: **LKC E-F**

Deviated: No Whipstock: ft (KB)

Time Tool Opened: 13:58:03

Time Test Ended: 18:12:02

Test Type: Conventional Bottom Hole (Initial)

Tester: Ray Schwager

Unit No: 42

Interval: 3356.00 ft (KB) To 3397.00 ft (KB) (TVD)

Reference Elevations: 2007.00 ft (KB)

Total Depth: 3397.00 ft (KB) (TVD)

1999.00 ft (CF)

Hole Diameter: 7.88 inches Hole Condition: Fair

KB to GR/CF: 8.00 ft

Serial #: 8369

Inside

Press @ RunDepth: 141.88 psig @ 3362.00 ft (KB)

Capacity: 8000.00 psig

Start Date: 2013.02.06

End Date:

2013.02.06

Last Calib.:

2013.02.06

Start Time: 11:30:23

End Time:

18:12:02

Time On Btm:

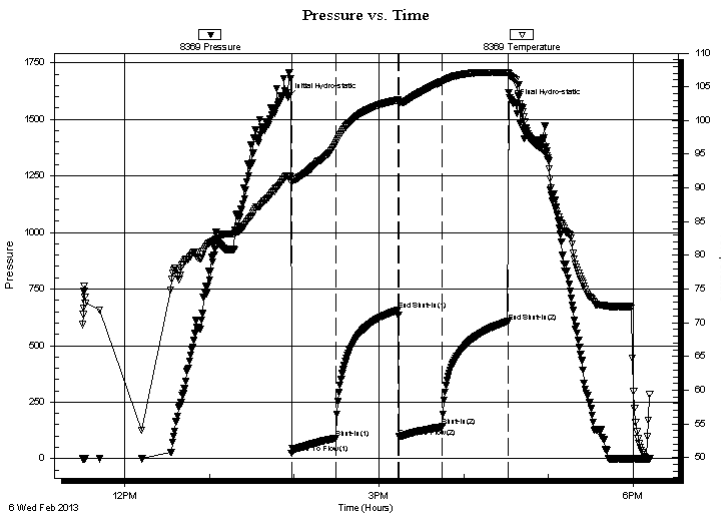
2013.02.06 @ 13:55:48

Time Off Btm:

2013.02.06 @ 16:35:17

TEST COMMENT: 30-IFP-w k to strg in 25 min
45-ISIP-no bl bk
30-FFP-w k to a fr bl 1/2" to 5" bl
45-FSIP-no bl bk

PRESSURE SUMMARY



Time (Min.)	Pressure (psig)	Temp (deg F)	Annotation
0	1598.13	91.80	Initial Hydro-static
3	23.73	90.75	Open To Flow (1)
34	90.65	96.62	Shut-In(1)
78	656.48	103.03	End Shut-In(1)
79	96.40	102.83	Open To Flow (2)
110	141.88	105.79	Shut-In(2)
156	605.75	107.08	End Shut-In(2)
160	1570.42	106.27	Final Hydro-static

Recovery

Length (ft)	Description	Volume (bbl)
180.00	Water	2.25
70.00	MW 15%M85%W	0.98

Gas Rates

Choke (inches)	Pressure (psig)	Gas Rate (Mcf/d)



**TRILOBITE
TESTING, INC.**

DRILL STEM TEST REPORT

TOOL DIAGRAM

Dow ning-Nelson Oil Co Inc

24-16s-17w Rush,KS

PO Box 1019
Hays KS 67601

Urban Brothers #1-24

Job Ticket: 51646

DST#: 1

ATTN: Ron Nelson

Test Start: 2013.02.06 @ 11:30:23

Tool Information

Drill Pipe:	Length: 3318.00 ft	Diameter: 3.80 inches	Volume: 46.54 bbl	Tool Weight: 2200.00 lb
Heavy Wt. Pipe:	Length: 0.00 ft	Diameter: 0.00 inches	Volume: 0.00 bbl	Weight set on Packer: 25000.00 lb
Drill Collar:	Length: 30.00 ft	Diameter: 2.25 inches	Volume: 0.15 bbl	Weight to Pull Loose: 55000.00 lb
			<u>Total Volume: 46.69 bbl</u>	Tool Chased 0.00 ft
Drill Pipe Above KB:	12.00 ft			String Weight: Initial 44000.00 lb
Depth to Top Packer:	3356.00 ft			Final 45000.00 lb
Depth to Bottom Packer:	ft			
Interval betw een Packers:	41.00 ft			
Tool Length:	61.00 ft			
Number of Packers:	2	Diameter: 6.75 inches		

Tool Comments:

Tool Description

Tool Description	Length (ft)	Serial No.	Position	Depth (ft)	Accum. Lengths
Change Over Sub	0.00			3336.00	
Shut In Tool	5.00			3341.00	
Hydraulic tool	5.00			3346.00	
Packer	5.00			3351.00	20.00 Bottom Of Top Packer
Packer	5.00			3356.00	
Stubb	1.00			3357.00	
Perforations	5.00			3362.00	
Recorder	0.00	8369	Inside	3362.00	
Recorder	0.00	8700	Outside	3362.00	
Blank Spacing	32.00			3394.00	
Bullnose	3.00			3397.00	41.00 Bottom Packers & Anchor

Total Tool Length: 61.00



**TRILOBITE
TESTING, INC.**

DRILL STEM TEST REPORT

FLUID SUMMARY

Dow ning-Nelson Oil Co Inc

24-16s-17w Rush,KS

PO Box 1019
Hays KS 67601

Urban Brothers #1-24

Job Ticket: 51646

DST#: 1

ATTN: Ron Nelson

Test Start: 2013.02.06 @ 11:30:23

Mud and Cushion Information

Mud Type: Gel Chem

Cushion Type:

Oil API:

deg API

Mud Weight: 9.00 lb/gal

Cushion Length:

ft

Water Salinity:

93000 ppm

Viscosity: 55.00 sec/qt

Cushion Volume:

bbbl

Water Loss: 8.33 in³

Gas Cushion Type:

Resistivity: ohm.m

Gas Cushion Pressure:

psig

Salinity: 3000.00 ppm

Filter Cake: 1.00 inches

Recovery Information

Recovery Table

Length ft	Description	Volume bbl
180.00	Water	2.252
70.00	MW 15%M85%W	0.982

Total Length: 250.00 ft Total Volume: 3.234 bbl

Num Fluid Samples: 0

Num Gas Bombs: 0

Serial #:

Laboratory Name:

Laboratory Location:

Recovery Comments: RW .09@65F

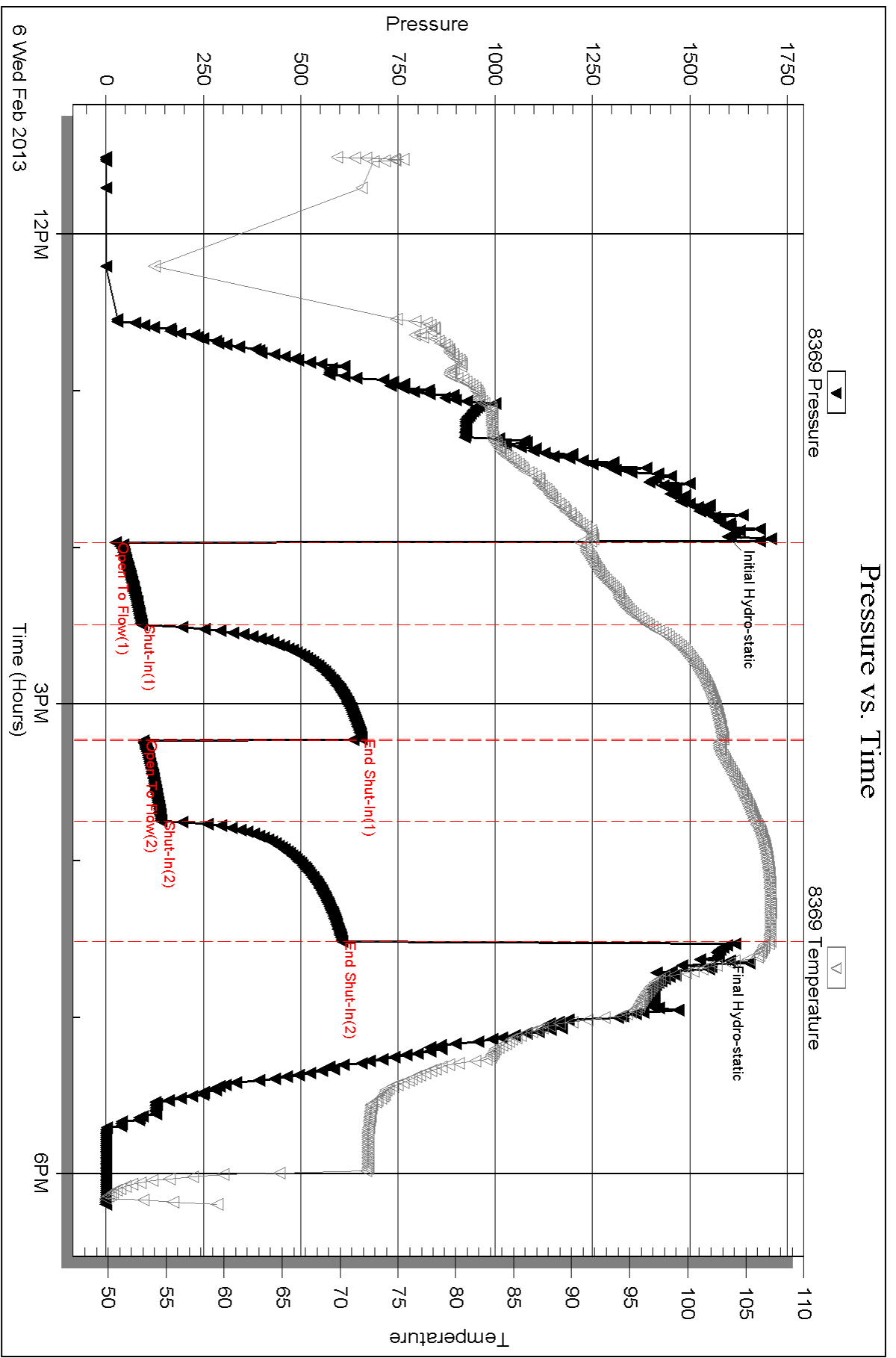
Serial #: 8369

Inside

Dow nung-Nelson Oil Co Inc

Urban Brothers #1-24

DST Test Number: 1



Triobite Testing, Inc

Ref. No: 51646

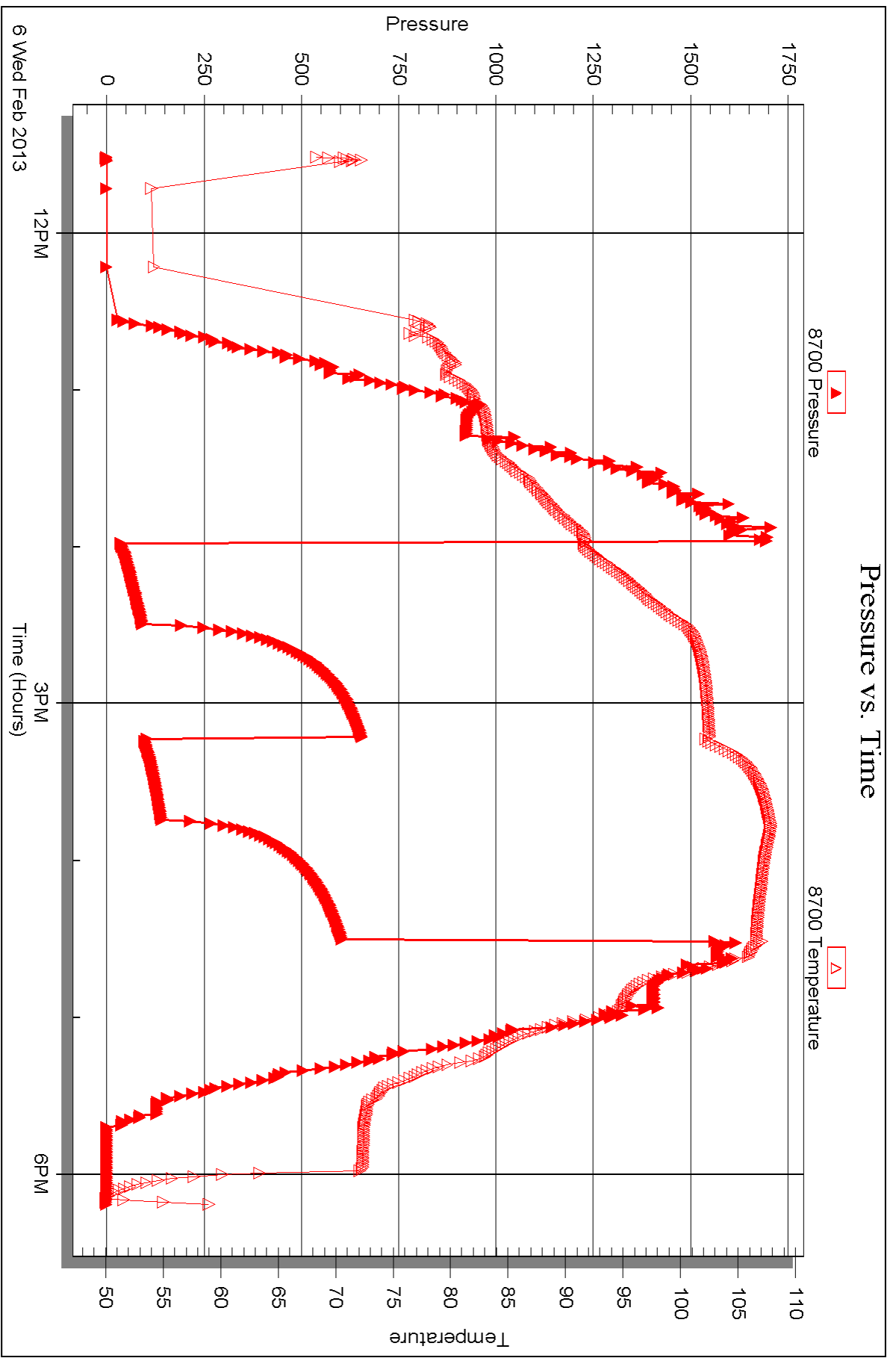
Printed: 2013.02.11 @ 12:02:53

Serial #: 8700

Outside Dow nting-Nelson Oil Co Inc

Urban Brothers #1-24

DST Test Number: 1



Triobite Testing, Inc

Ref. No: 51646

Printed: 2013.02.11 @ 12:02:53



DRILL STEM TEST REPORT

Prepared For: **Downing-Nelson Oil Co Inc**

PO Box 1019
Hays KS 67601

ATTN: Ron Nelson

Urban Brothers #1-24

24-16s-17w Rush,KS

Start Date: 2013.02.07 @ 03:46:01

End Date: 2013.02.07 @ 09:37:40

Job Ticket #: 51647 DST #: 2

Trilobite Testing, Inc

PO Box 362 Hays, KS 67601

ph: 785-625-4778 fax: 785-625-5620

Printed: 2013.02.11 @ 12:02:11



**TRILOBITE
TESTING, INC.**

DRILL STEM TEST REPORT

Dow ning-Nelson Oil Co Inc

24-16s-17w Rush,KS

PO Box 1019
Hays KS 67601

Urban Brothers #1-24

ATTN: Ron Nelson

Job Ticket: 51647

DST#: 2

Test Start: 2013.02.07 @ 03:46:01

GENERAL INFORMATION:

Formation: **LKC I-K**
 Deviated: No Whipstock: ft (KB)
 Time Tool Opened: 05:31:56
 Time Test Ended: 09:37:40
 Interval: **3446.00 ft (KB) To 3500.00 ft (KB) (TVD)**
 Total Depth: 3500.00 ft (KB) (TVD)
 Hole Diameter: 7.88 inches Hole Condition: Fair
 Test Type: Conventional Bottom Hole (Reset)
 Tester: Ray Schwager
 Unit No: 42
 Reference Elevations: 2007.00 ft (KB)
 1999.00 ft (CF)
 KB to GR/CF: 8.00 ft

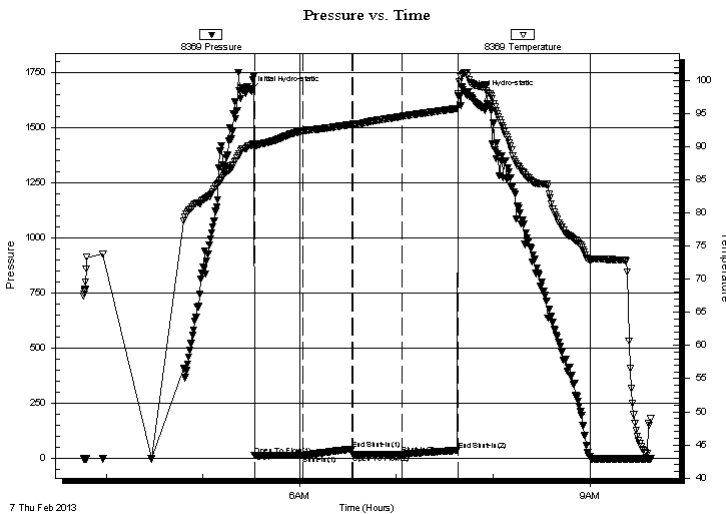
Serial #: 8369

Inside

Press @ Run Depth: 20.40 psig @ 3448.00 ft (KB) Capacity: 8000.00 psig
 Start Date: 2013.02.07 End Date: 2013.02.07 Last Calib.: 2013.02.07
 Start Time: 03:46:01 End Time: 09:37:40 Time On Btm: 2013.02.07 @ 05:29:41
 Time Off Btm: 2013.02.07 @ 07:43:26

TEST COMMENT: 30-IFP-w k bl thru-out 1/4" bl
 30-ISIP-no bl
 30-FFP-surface bl thru-out
 30-FSIP-no bl

PRESSURE SUMMARY



Time (Min.)	Pressure (psig)	Temp (deg F)	Annotation
0	1667.33	90.19	Initial Hydro-static
3	14.38	89.85	Open To Flow (1)
32	15.10	92.35	Shut-In(1)
63	43.98	93.36	End Shut-In(1)
64	18.64	93.40	Open To Flow (2)
94	20.40	94.56	Shut-In(2)
129	37.39	95.77	End Shut-In(2)
134	1649.21	101.20	Final Hydro-static

Recovery

Length (ft)	Description	Volume (bbl)
10.00	OCM 6%O94%M	0.05

* Recovery from multiple tests

Gas Rates

Choke (inches)	Pressure (psig)	Gas Rate (Mcf/d)



**TRILOBITE
TESTING, INC.**

DRILL STEM TEST REPORT

TOOL DIAGRAM

Dow ning-Nelson Oil Co Inc

24-16s-17w Rush,KS

PO Box 1019
Hays KS 67601

Urban Brothers #1-24

Job Ticket: 51647

DST#: 2

ATTN: Ron Nelson

Test Start: 2013.02.07 @ 03:46:01

Tool Information

Drill Pipe:	Length: 3413.00 ft	Diameter: 3.80 inches	Volume: 47.88 bbl	Tool Weight: 2200.00 lb
Heavy Wt. Pipe:	Length: 0.00 ft	Diameter: 0.00 inches	Volume: 0.00 bbl	Weight set on Packer: 25000.00 lb
Drill Collar:	Length: 30.00 ft	Diameter: 2.25 inches	Volume: 0.15 bbl	Weight to Pull Loose: 55000.00 lb
			<u>Total Volume: 48.03 bbl</u>	Tool Chased 0.00 ft
Drill Pipe Above KB:	17.00 ft			String Weight: Initial 42000.00 lb
Depth to Top Packer:	3446.00 ft			Final 42000.00 lb
Depth to Bottom Packer:	ft			
Interval between Packers:	54.00 ft			
Tool Length:	74.00 ft			
Number of Packers:	2	Diameter: 6.75 inches		

Tool Comments:

Tool Description	Length (ft)	Serial No.	Position	Depth (ft)	Accum. Lengths
------------------	-------------	------------	----------	------------	----------------

Change Over Sub	0.00			3426.00	
Shut In Tool	5.00			3431.00	
Hydraulic tool	5.00			3436.00	
Packer	5.00			3441.00	20.00 Bottom Of Top Packer
Packer	5.00			3446.00	
Stubb	1.00			3447.00	
Perforations	1.00			3448.00	
Recorder	0.00	8369	Inside	3448.00	
Recorder	0.00	8700	Outside	3448.00	
Blank Spacing	32.00			3480.00	
Perforations	17.00			3497.00	
Bullnose	3.00			3500.00	54.00 Bottom Packers & Anchor

Total Tool Length: 74.00



**TRILOBITE
TESTING, INC.**

DRILL STEM TEST REPORT

FLUID SUMMARY

Dow ning-Nelson Oil Co Inc

24-16s-17w Rush,KS

PO Box 1019
Hays KS 67601

Urban Brothers #1-24

Job Ticket: 51647

DST#: 2

ATTN: Ron Nelson

Test Start: 2013.02.07 @ 03:46:01

Mud and Cushion Information

Mud Type: Gel Chem

Cushion Type:

Oil API:

deg API

Mud Weight: 9.00 lb/gal

Cushion Length:

ft

Water Salinity:

ppm

Viscosity: 80.00 sec/qt

Cushion Volume:

bbf

Water Loss: 8.31 in³

Gas Cushion Type:

Resistivity: ohm.m

Gas Cushion Pressure:

psig

Salinity: 3000.00 ppm

Filter Cake: 1.00 inches

Recovery Information

Recovery Table

Length ft	Description	Volume bbf
10.00	OCM 6%O94%M	0.049

Total Length: 10.00 ft Total Volume: 0.049 bbf

Num Fluid Samples: 0

Num Gas Bombs: 0

Serial #:

Laboratory Name:

Laboratory Location:

Recovery Comments:

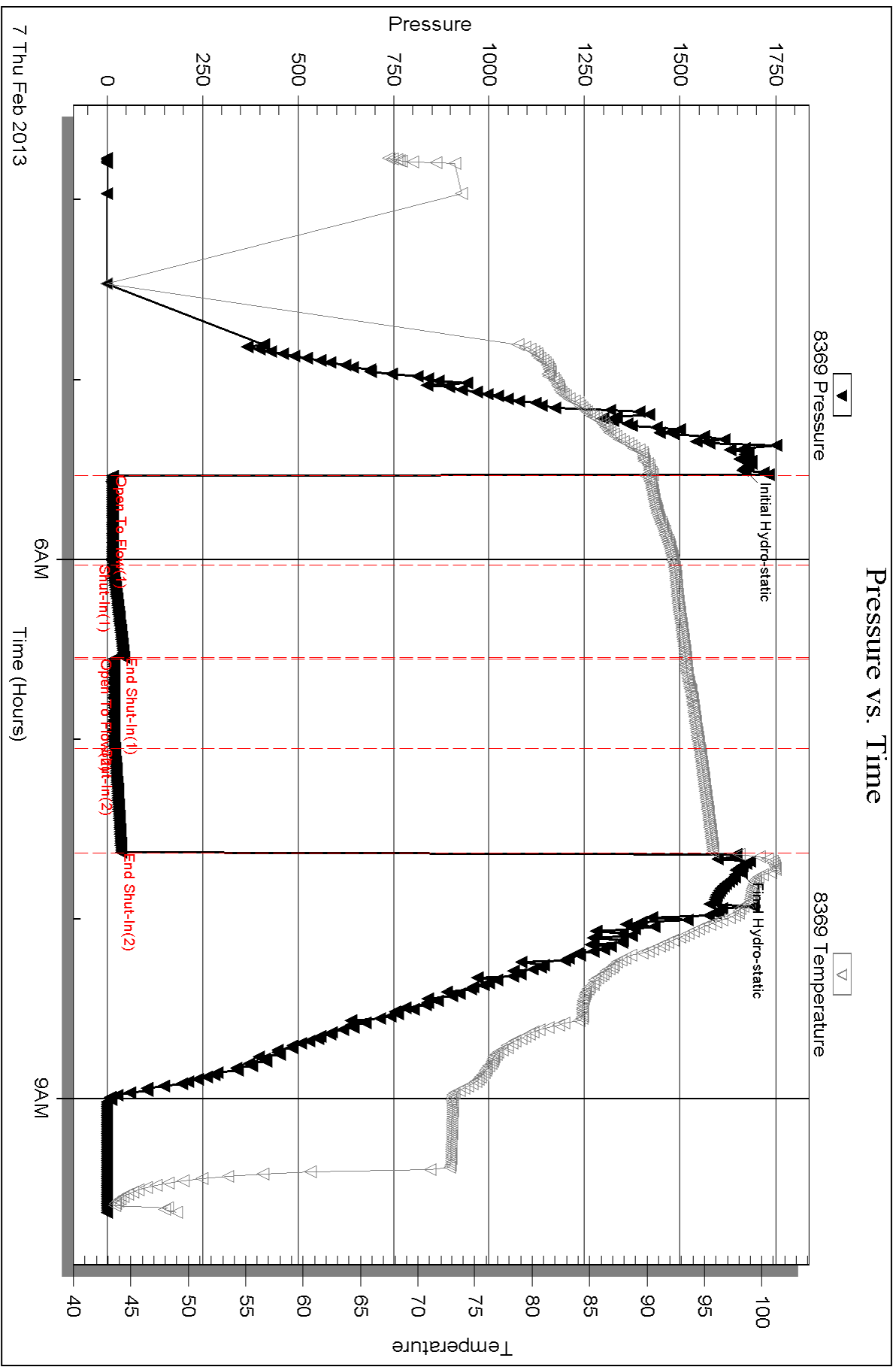
Serial #: 8369

Inside

Dow nung-Nelson Oil Co Inc

Urban Brothers #1-24

DST Test Number: 2



Triobite Testing, Inc

Ref. No: 51647

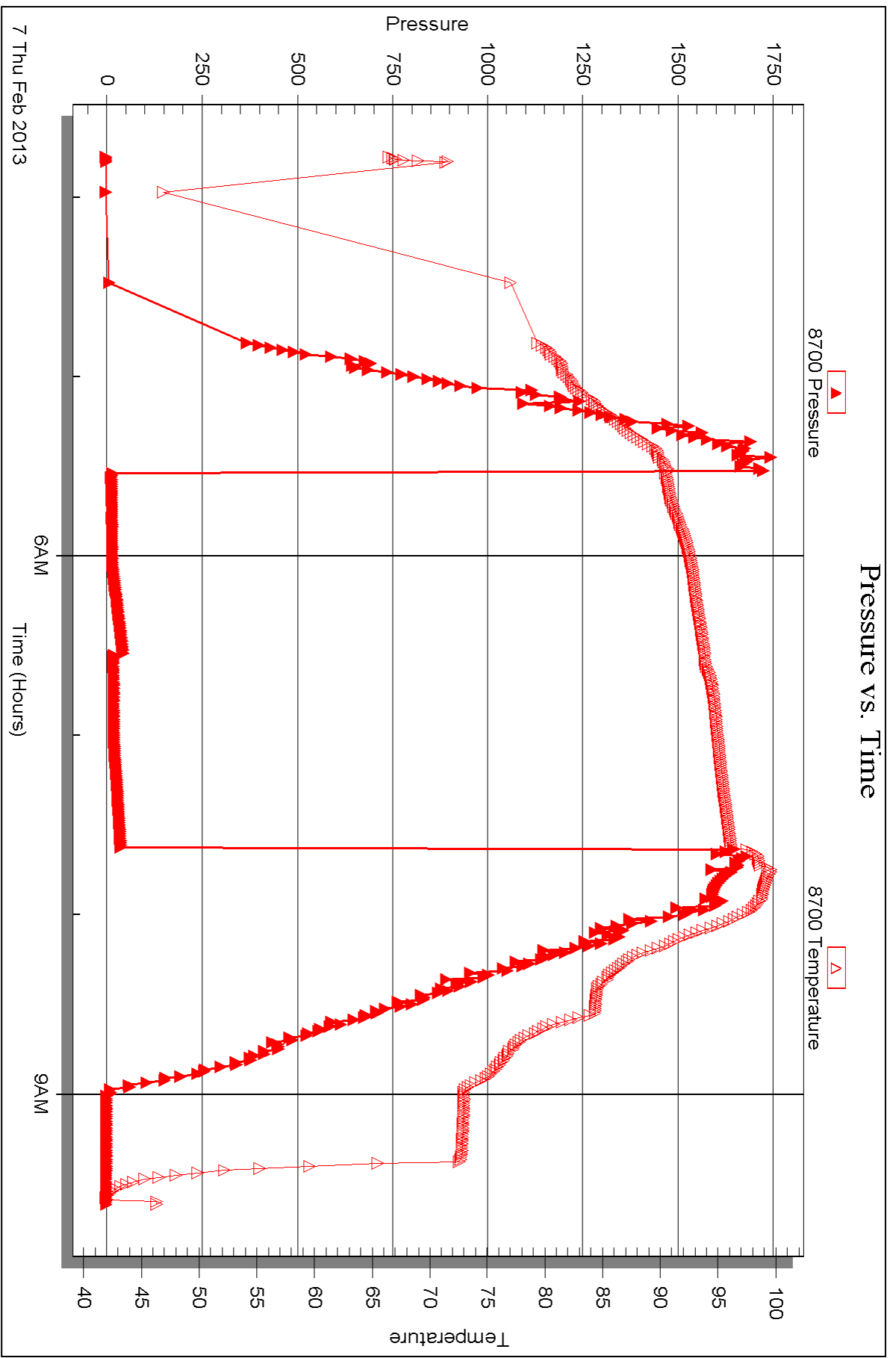
Printed: 2013.02.11 @ 12:02:13

Serial #: 8700

Outside Dow nting-Nelson Oil Co Inc

Urban Brothers #1-24

DST Test Number: 2



Triobite Testing, Inc

Ref. No: 51647

Printed: 2013.02.11 @ 12:02:14



DRILL STEM TEST REPORT

Prepared For: **Downing-Nelson Oil Co Inc**

PO Box 1019
Hays KS 67601

ATTN: Ron Nelson

Urban Brothers #1-24

24-16s-17w Rush,KS

Start Date: 2013.02.07 @ 20:00:05

End Date: 2013.02.08 @ 00:46:14

Job Ticket #: 51648 DST #: 3

Trilobite Testing, Inc

PO Box 362 Hays, KS 67601

ph: 785-625-4778 fax: 785-625-5620

Printed: 2013.02.11 @ 11:33:52



TRILOBITE TESTING, INC.

DRILL STEM TEST REPORT

Dow ning-Nelson Oil Co Inc

24-16s-17w Rush,KS

PO Box 1019
Hays KS 67601

Urban Brothers #1-24

ATTN: Ron Nelson

Job Ticket: 51648

DST#: 3

Test Start: 2013.02.07 @ 20:00:05

GENERAL INFORMATION:

Formation: **Congl Sd**

Deviated: No Whipstock: ft (KB)

Time Tool Opened: 21:13:30

Time Test Ended: 00:46:14

Test Type: Conventional Bottom Hole (Reset)

Tester: Ray Schwager

Unit No: 42

Interval: 3484.00 ft (KB) To 3553.00 ft (KB) (TVD)

Reference Elevations: 2007.00 ft (KB)

Total Depth: 3553.00 ft (KB) (TVD)

1999.00 ft (CF)

Hole Diameter: 7.88 inches Hole Condition: Fair

KB to GR/CF: 8.00 ft

Serial #: 8369

Inside

Press @ Run Depth: 25.15 psig @ 3490.00 ft (KB)

Capacity: 8000.00 psig

Start Date: 2013.02.07

End Date:

2013.02.08

Last Calib.: 2013.02.08

Start Time: 20:00:05

End Time:

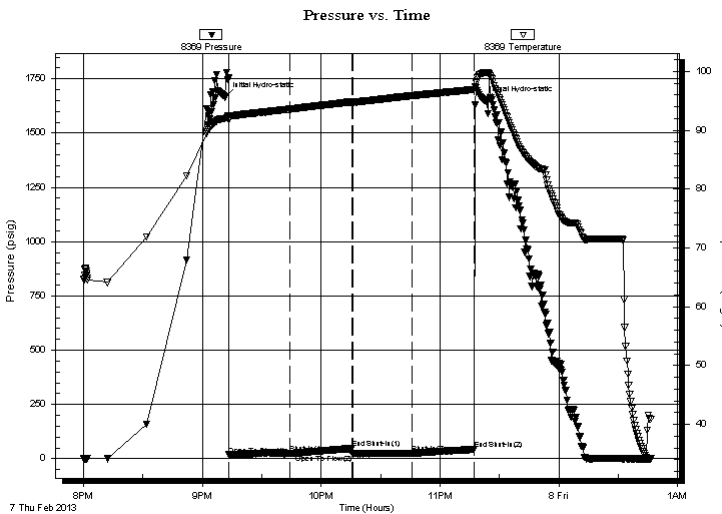
00:46:14

Time On Btm: 2013.02.07 @ 21:11:30

Time Off Btm: 2013.02.07 @ 23:22:45

TEST COMMENT: 30-IFP-w k bl thru-out 1/4" to 3/4" bl
30-ISIP-no bl
30-FFP-w k bl thru-out 3/4" bl
30-FSIP-no bl

PRESSURE SUMMARY



Time (Min.)	Pressure (psig)	Temp (deg F)	Annotation
0	1666.93	92.04	Initial Hydro-static
2	17.73	91.86	Open To Flow (1)
33	23.31	93.59	Shut-In(1)
64	47.52	94.82	End Shut-In(1)
65	21.28	94.78	Open To Flow (2)
95	25.15	95.87	Shut-In(2)
126	42.86	96.97	End Shut-In(2)
132	1648.76	99.81	Final Hydro-static

Recovery

Length (ft)	Description	Volume (bbl)
10.00	SOCM 5% O95%M	0.05

Gas Rates

Choke (inches)	Pressure (psig)	Gas Rate (Mcf/d)

* Recovery from multiple tests



**TRILOBITE
TESTING, INC.**

DRILL STEM TEST REPORT

TOOL DIAGRAM

Dow ning-Nelson Oil Co Inc

24-16s-17w Rush,KS

PO Box 1019
Hays KS 67601

Urban Brothers #1-24

Job Ticket: 51648

DST#: 3

ATTN: Ron Nelson

Test Start: 2013.02.07 @ 20:00:05

Tool Information

Drill Pipe:	Length: 3444.00 ft	Diameter: 3.80 inches	Volume: 48.31 bbl	Tool Weight: 2200.00 lb
Heavy Wt. Pipe:	Length: 0.00 ft	Diameter: 0.00 inches	Volume: 0.00 bbl	Weight set on Packer: 25000.00 lb
Drill Collar:	Length: 30.00 ft	Diameter: 2.25 inches	Volume: 0.15 bbl	Weight to Pull Loose: 55000.00 lb
			<u>Total Volume: 48.46 bbl</u>	Tool Chased 0.00 ft
Drill Pipe Above KB:	10.00 ft			String Weight: Initial 42000.00 lb
Depth to Top Packer:	3484.00 ft			Final 42000.00 lb
Depth to Bottom Packer:	ft			
Interval between Packers:	69.00 ft			
Tool Length:	89.00 ft			
Number of Packers:	2	Diameter: 6.75 inches		

Tool Comments:

Tool Description

Tool Description	Length (ft)	Serial No.	Position	Depth (ft)	Accum. Lengths
Change Over Sub	0.00			3464.00	
Shut In Tool	5.00			3469.00	
Hydraulic tool	5.00			3474.00	
Packer	5.00			3479.00	20.00 Bottom Of Top Packer
Packer	5.00			3484.00	
Stubb	1.00			3485.00	
Perforations	5.00			3490.00	
Recorder	0.00	8369	Inside	3490.00	
Recorder	0.00	8700	Outside	3490.00	
Blank Spacing	33.00			3523.00	
Perforations	27.00			3550.00	
Bullnose	3.00			3553.00	69.00 Bottom Packers & Anchor

Total Tool Length: 89.00



**TRILOBITE
TESTING, INC.**

DRILL STEM TEST REPORT

FLUID SUMMARY

Dow ning-Nelson Oil Co Inc

24-16s-17w Rush,KS

PO Box 1019
Hays KS 67601

Urban Brothers #1-24

Job Ticket: 51648

DST#: 3

ATTN: Ron Nelson

Test Start: 2013.02.07 @ 20:00:05

Mud and Cushion Information

Mud Type: Gel Chem

Cushion Type:

Oil API:

deg API

Mud Weight: 9.00 lb/gal

Cushion Length:

ft

Water Salinity:

ppm

Viscosity: 70.00 sec/qt

Cushion Volume:

bbf

Water Loss: 7.98 in³

Gas Cushion Type:

Resistivity: ohm.m

Gas Cushion Pressure:

psig

Salinity: 3200.00 ppm

Filter Cake: 1.00 inches

Recovery Information

Recovery Table

Length ft	Description	Volume bbf
10.00	SOCM 5%O95%M	0.049

Total Length: 10.00 ft Total Volume: 0.049 bbf

Num Fluid Samples: 0

Num Gas Bombs: 0

Serial #:

Laboratory Name:

Laboratory Location:

Recovery Comments:

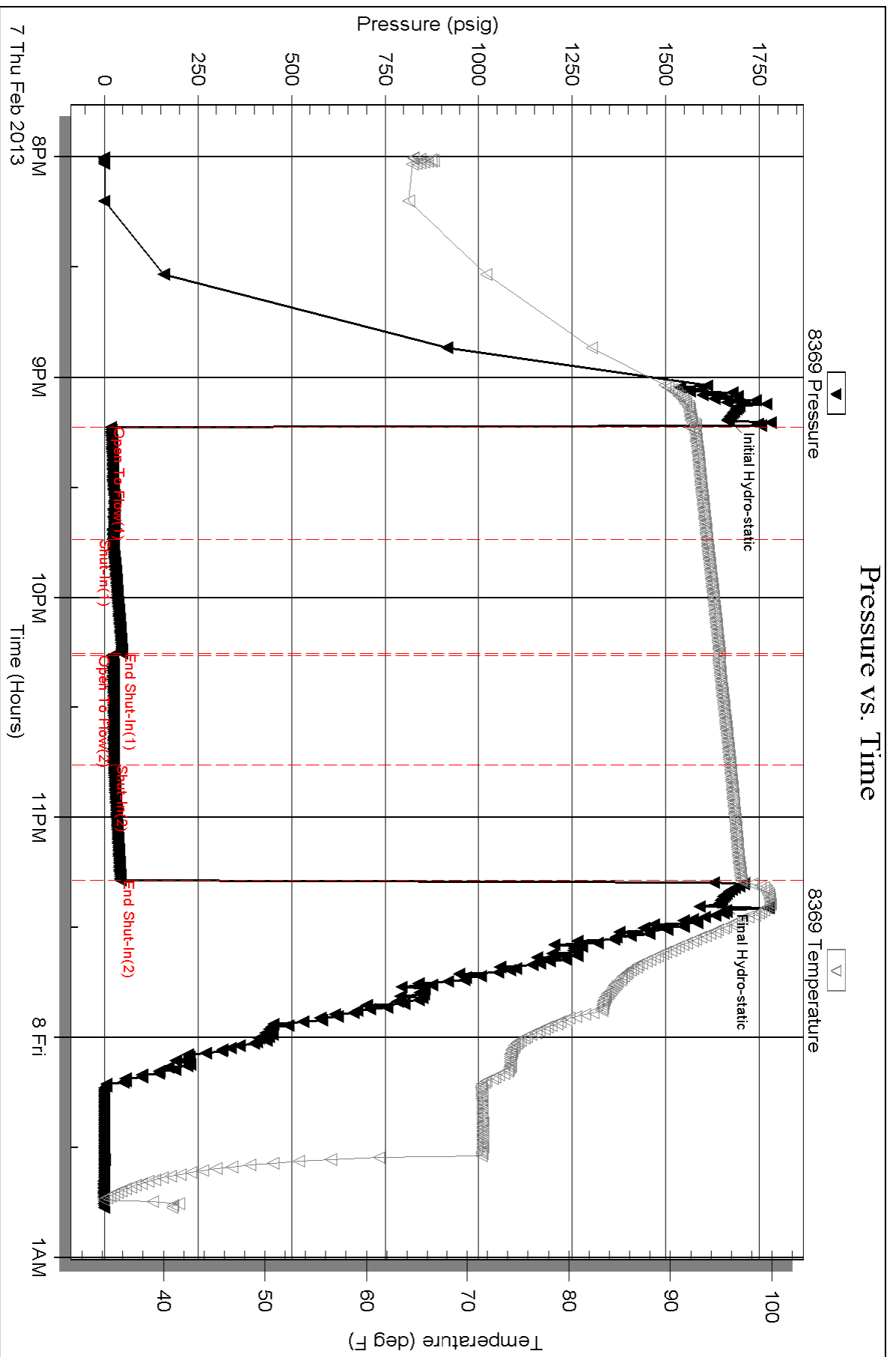
Serial #: 8369

Inside

Downing-Nelson Oil Co Inc

Urban Brothers #1-24

DST Test Number: 3

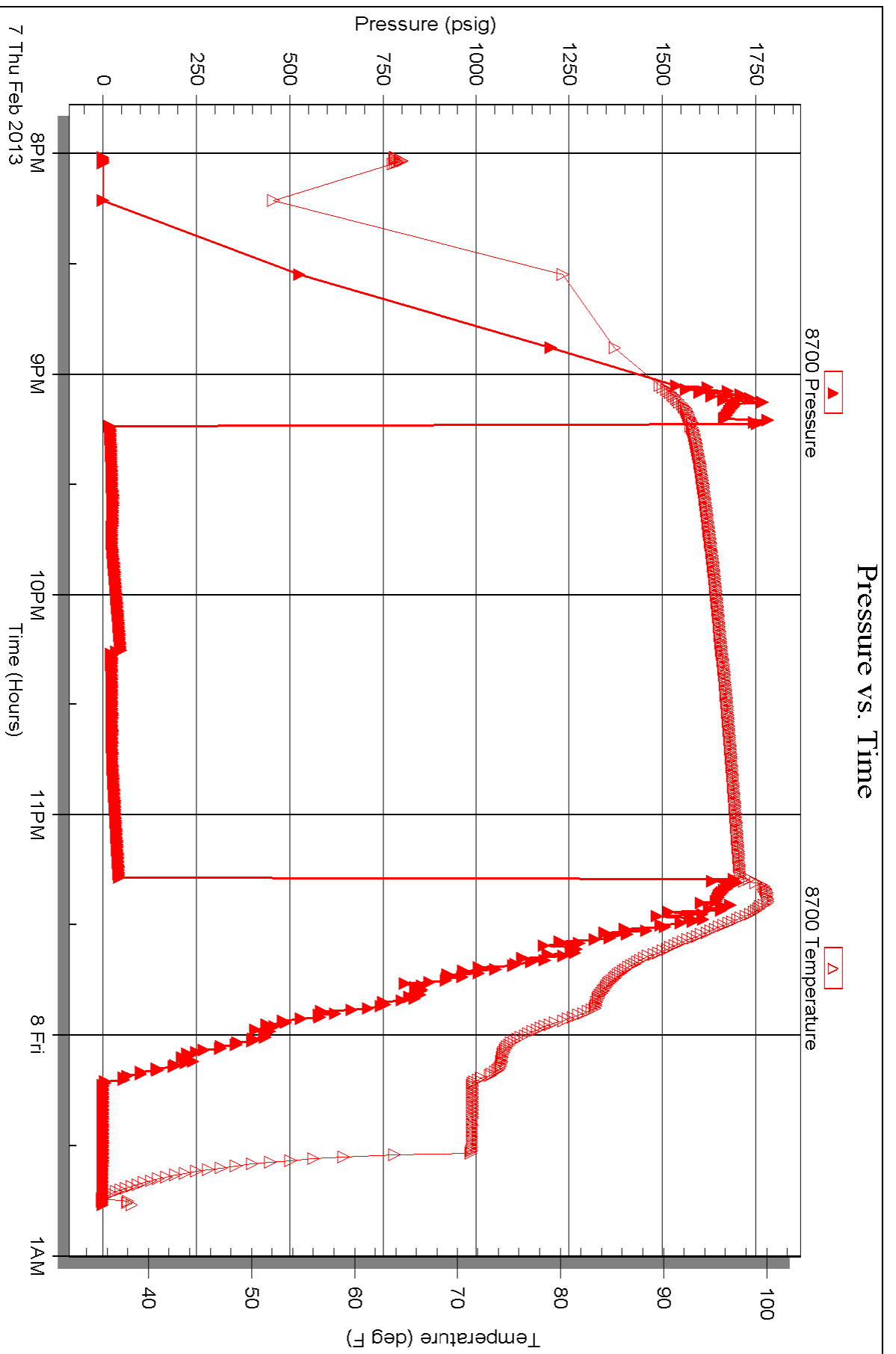


Serial #: 8700

Outside Dow nting-Nelson Oil Co Inc

Urban Brothers #1-24

DST Test Number: 3





TRILOBITE TESTING INC.

1515 Commerce Parkway • Hays, Kansas 67601

Test Ticket

NO. 51646

4/10

Well Name & No. Urban Brothers #1-24 Test No. 1 Date 2-6-13
 Company Downing-Nelson Oil Co Inc Elevation 2007 KB 1999 GL
 Address PO Box 1019 Hays, Ks 67601
 Co. Rep / Geo. Ron Nelson Rig Discovery rig 4
 Location: Sec. 24 Twp. 16^s Rge. 17^w Co. Rush State Ks

Interval Tested 3356-3397 Zone Tested LKC E-F
 Anchor Length 41 Drill Pipe Run 3318 Mud Wt. 8.9
 Top Packer Depth 3351 Drill Collars Run 30 Vis 55
 Bottom Packer Depth 3356 Wt. Pipe Run - WL 8.4
 Total Depth 3397 Chlorides 3000 ppm System LCM 1#

Blow Description IFP - WEAK TO A STRONG BLOW IN 25min
ISIP - NO BLOW
FFP - WEAK TO A FAIR BLOW 1/2" TO 5" BLOW
FSIP - NO BLOW

Rec	Feet of	%gas	%oil	%water	%mud
<u>70</u>	<u>MW</u>				
<u>180</u>	<u>WATER</u>				

Rec Total 250 BHT 107 Gravity - API RW .09 @ 65 °F Chlorides 93000 ppm

(A) Initial Hydrostatic 1598 Test 1150 T-On Location 1030
 (B) First Initial Flow 23 Jars - T-Started 1130
 (C) First Final Flow 90 Safety Joint - T-Open 1400
 (D) Initial Shut-In 656 Circ Sub - T-Pulled 1630
 (E) Second Initial Flow 96 Hourly Standby - T-Out 1812
 (F) Second Final Flow 141 Mileage 53RT 82.15 Comments _____
 (G) Final Shut-In 605 Sampler _____
 (H) Final Hydrostatic 1570 Straddle _____

Ruined Shale Packer _____
 Shale Packer _____
 Ruined Packer _____
 Extra Packer _____
 Extra Copies _____
 Extra Recorder _____
 Day Standby _____
 Accessibility _____
 Sub Total 1232.15 Total 1232.15 MP/DST Disc't _____

Approved By _____ Our Representative RAY SCHWAGN *Thank you*

Trilobite Testing Inc. shall not be liable for damaged of any kind of the property or personnel of the one for whom a test is made, or for any loss suffered or sustained, directly or indirectly, through the use of its equipment, or its statements or opinion concerning the results of any test, tools lost or damaged in the hole shall be paid for at cost by the party for whom the test is made.



TRILOBITE TESTING INC.

1515 Commerce Parkway • Hays, Kansas 67601

Test Ticket

NO. 51647

Well Name & No. URBAN BROTHERS # 1-24 Test No. 2 Date 2-7-13
 Company Downing-Nelson Oil Co, Inc Elevation 2007 KB 1999 GL
 Address PO Box 1019 Hays, Ko 67601
 Co. Rep / Geo. Ron Nelson Rig Discovery rig 4
 Location: Sec. 24 Twp. 16^s Rge. 17^w Co. Rush State Ko

Interval Tested 3446-3500 Zone Tested LKC I,J,K
 Anchor Length 54 Drill Pipe Run 3413 Mud Wt. 8.7
 Top Packer Depth 3441 Drill Collars Run 30 Vis 80
 Bottom Packer Depth 3446 Wt. Pipe Run - WL 8.4
 Total Depth 3500 Chlorides 3000 ppm System LCM 1#
 Blow Description I FP - Weak Blow thru-out 1/4" Blow
ISIP - NO Blow
FFP - surface Blow thru-out
FSIP - NO Blow

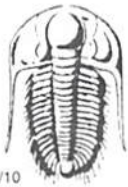
Rec	Feet of	%gas	%oil	%water	%mud
<u>10</u>	<u>0 CM</u>		<u>6</u>	<u>99</u>	
Rec	Feet of	%gas	%oil	%water	%mud
Rec	Feet of	%gas	%oil	%water	%mud
Rec	Feet of	%gas	%oil	%water	%mud
Rec	Feet of	%gas	%oil	%water	%mud

Rec Total 10 BHT 96 Gravity - API RW - @ - F Chlorides - ppm

(A) Initial Hydrostatic <u>1667</u>	<input checked="" type="checkbox"/> Test <u>1150</u>	T-On Location <u>0315</u>
(B) First Initial Flow <u>14</u>	<input type="checkbox"/> Jars	T-Started <u>0345</u>
(C) First Final Flow <u>15</u>	<input type="checkbox"/> Safety Joint	T-Open <u>0530</u>
(D) Initial Shut-In <u>43</u>	<input type="checkbox"/> Circ Sub	T-Pulled <u>0730</u>
(E) Second Initial Flow <u>18</u>	<input type="checkbox"/> Hourly Standby	T-Out <u>0937</u>
(F) Second Final Flow <u>20</u>	<input checked="" type="checkbox"/> Mileage <u>82.15</u>	Comments
(G) Final Shut-In <u>37</u>	<input type="checkbox"/> Sampler	
(H) Final Hydrostatic <u>1649</u>	<input type="checkbox"/> Straddle	<input type="checkbox"/> Ruined Shale Packer
	<input type="checkbox"/> Shale Packer	<input type="checkbox"/> Ruined Packer
Initial Open <u>30</u>	<input type="checkbox"/> Extra Packer	<input type="checkbox"/> Extra Copies
Initial Shut-In <u>30</u>	<input type="checkbox"/> Extra Recorder	Sub Total <u>0</u>
Final Flow <u>30</u>	<input type="checkbox"/> Day Standby	Total <u>1232.15</u>
Final Shut-In <u>30</u>	<input type="checkbox"/> Accessibility	MP/DST Disc't
	Sub Total <u>1232.15</u>	

Approved By _____ Our Representative Ray Schwager *THANK YOU*

Trilobite Testing Inc. shall not be liable for damaged of any kind of the property or personnel of the one for whom a test is made, or for any loss suffered or sustained, directly or indirectly, through the use of its equipment, or its statements or opinion concerning the results of any test, tools lost or damaged in the hole shall be paid for at cost by the party for whom the test is made.



TRILOBITE TESTING INC.

1515 Commerce Parkway • Hays, Kansas 67601

Test Ticket

NO. 51648

Well Name & No. Urban Brothers #1-24 Test No. 3 Date 2-7-13
 Company Downing-Nelson Oil Co Inc Elevation 2007 KB 1999 GL
 Address PO Box 1019 Hays, Ks 67601
 Co. Rep / Geo. Ron Nelson Rig Discovery rig 4
 Location: Sec. 24 Twp. 16^s Rge. 17^w Co. Rush State Ks

Interval Tested 3484-3553 Zone Tested Comp. sd.
 Anchor Length 69 Drill Pipe Run 3444 Mud Wt. 8.9
 Top Packer Depth 3479 Drill Collars Run 30 Vis 70
 Bottom Packer Depth 3484 Wt. Pipe Run — WL 8
 Total Depth 3553 Chlorides 3200 ppm System LCM 1#
 Blow Description IFP - Weak Blow thru-out 1/4" To 3/4" Blow
ISIP - NO Blow
FFP - Weak Blow thru-out 3/4" Blow
FSIP - NO Blow

Rec	Feet of	%gas	%oil	%water	%mud
<u>10</u>	<u>50CM</u>	<u>5</u>		<u>95</u>	
Rec	Feet of	%gas	%oil	%water	%mud
Rec	Feet of	%gas	%oil	%water	%mud
Rec	Feet of	%gas	%oil	%water	%mud
Rec	Feet of	%gas	%oil	%water	%mud

Rec Total 10 BHT _____ Gravity _____ API RW _____ @ _____ °F Chlorides _____ ppm

(A) Initial Hydrostatic <u>1666</u>	<input checked="" type="checkbox"/> Test <u>1150</u>	T-On Location <u>1945</u>
(B) First Initial Flow <u>17</u>	<input type="checkbox"/> Jars _____	T-Started <u>2000</u>
(C) First Final Flow <u>23</u>	<input type="checkbox"/> Safety Joint _____	T-Open <u>2115</u>
(D) Initial Shut-In <u>47</u>	<input type="checkbox"/> Circ Sub _____	T-Pulled <u>2315</u>
(E) Second Initial Flow <u>21</u>	<input type="checkbox"/> Hourly Standby _____	T-Out <u>0046</u>
(F) Second Final Flow <u>25</u>	<input checked="" type="checkbox"/> Mileage <u>82.15</u>	Comments _____
(G) Final Shut-In <u>42</u>	<input type="checkbox"/> Sampler _____	_____
(H) Final Hydrostatic <u>1648</u>	<input type="checkbox"/> Straddle _____	<input type="checkbox"/> Ruined Shale Packer _____
	<input type="checkbox"/> Shale Packer _____	<input type="checkbox"/> Ruined Packer _____
Initial Open <u>30</u>	<input type="checkbox"/> Extra Packer _____	<input type="checkbox"/> Extra Copies _____
Initial Shut-In <u>30</u>	<input type="checkbox"/> Extra Recorder _____	Sub Total <u>0</u>
Final Flow <u>30</u>	<input type="checkbox"/> Day Standby _____	Total <u>1232.15</u>
Final Shut-In <u>30</u>	<input type="checkbox"/> Accessibility _____	MP/DST Disc't _____
	Sub Total <u>1232.15</u>	

Approved By _____ Our Representative RAY Schwager *Thank you*

Trilobite Testing Inc. shall not be liable for damaged of any kind of the property or personnel of the one for whom a test is made, or for any loss suffered or sustained, directly or indirectly, through the use of its equipment, or its statements or opinion concerning the results of any test, tools lost or damaged in the hole shall be paid for at cost by the party for whom the test is made.