



TRILOBITE TESTING, INC.

DRILL STEM TEST REPORT

Venture Resources, Inc.

12-11-18, Ellis, KS

2255 S Wadsworth
STE 205 Lakewood CO 80227

Kemp South C #15

Job Ticket: 50261

DST#: 2

ATTN: Brad Rine

Test Start: 2013.01.22 @ 15:20:00

GENERAL INFORMATION:

Formation: **KC "D-f"**

Deviated: No Whipstock: ft (KB)

Time Tool Opened: 17:34:00

Time Test Ended: 22:32:30

Test Type: Conventional Bottom Hole (Reset)

Tester: Brett Dickinson

Unit No: 59

Interval: 3138.00 ft (KB) To 3182.00 ft (KB) (TVD)

Reference Elevations: 1883.00 ft (KB)

Total Depth: 3182.00 ft (KB) (TVD)

1876.00 ft (CF)

Hole Diameter: 7.88 inches Hole Condition: Fair

KB to GR/CF: 7.00 ft

Serial #: 6753 Inside

Press @ Run Depth: 63.35 psig @ 3139.00 ft (KB)

Capacity: 8000.00 psig

Start Date: 2013.01.22 End Date: 2013.01.22

Last Calib.: 2013.01.22

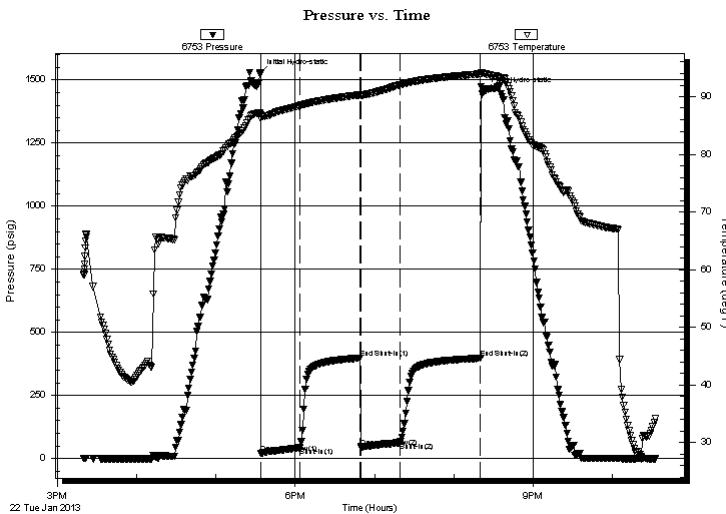
Start Time: 15:20:05 End Time: 22:32:29

Time On Btm: 2013.01.22 @ 17:33:00

Time Off Btm: 2013.01.22 @ 20:22:30

TEST COMMENT: IF-8in blow
IS-No blow
FF-2in blow
FS-No blow

PRESSURE SUMMARY



Time (Min.)	Pressure (psig)	Temp (deg F)	Annotation
0	1526.65	87.15	Initial Hydro-static
1	21.03	86.18	Open To Flow (1)
31	43.37	88.44	Shut-In(1)
76	398.49	90.30	End Shut-In(1)
77	45.46	90.23	Open To Flow (2)
106	63.35	92.01	Shut-In(2)
167	397.46	93.93	End Shut-In(2)
170	1456.21	94.02	Final Hydro-static

Recovery

Length (ft)	Description	Volume (bbl)
60.00	Oilspotted MCW 60%W 40%M	0.84
30.00	Oilspotted VSWCM 5%W 95%M	0.42

* Recovery from multiple tests

Gas Rates

	Choke (inches)	Pressure (psig)	Gas Rate (Mcf/d)



**TRILOBITE
TESTING, INC.**

DRILL STEM TEST REPORT

FLUID SUMMARY

Venture Resources, Inc.

12-11-18, Ellis, KS

2255 S Wadsworth
STE 205 Lakewood CO 80227

Kemp South C #15

Job Ticket: 50261

DST#: 2

ATTN: Brad Rine

Test Start: 2013.01.22 @ 15:20:00

Mud and Cushion Information

Mud Type: Gel Chem

Cushion Type:

Oil API:

deg API

Mud Weight: 9.00 lb/gal

Cushion Length:

ft

Water Salinity: 135000 ppm

Viscosity: 50.00 sec/qt

Cushion Volume:

bbbl

Water Loss: 7.79 in³

Gas Cushion Type:

Resistivity: ohm.m

Gas Cushion Pressure:

psig

Salinity: 3700.00 ppm

Filter Cake: inches

Recovery Information

Recovery Table

Length ft	Description	Volume bbbl
60.00	Oilspotted MCW 60%W 40%M	0.842
30.00	Oilspotted VSWCM 5%W 95%M	0.421

Total Length: 90.00 ft Total Volume: 1.263 bbl

Num Fluid Samples: 0

Num Gas Bombs: 0

Serial #:

Laboratory Name:

Laboratory Location:

Recovery Comments: Sampler Data 200ml Mud 1900ml Water

Serial #: 6753

Inside

Venture Resources, Inc.

Kemp South C #15

DST Test Number: 2

Pressure vs. Time

