



DRILL STEM TEST REPORT

Prepared For: **F.G. Holl Company LLC**

9431 E Central STE 100 Wichita Kansas
67206-2563

ATTN: Frank Greenbaum

Wolf #3-12

12-20s-15w/ Barton

Start Date: 2013.02.14 @ 12:40:00

End Date: 2013.02.14 @ 17:10:00

Job Ticket #: 16974 DST #: 7

Superior Testers Enterprises LLC
PO Box 138 Great Bend KS 67530
1-800-792-6902

Printed: 2013.02.14 @ 17:11:18



DRILL STEM TEST REPORT

F.G. Holl Company LLC

12-20s-15w/ Barton

9431 E Central STE 100 Wichita Kansas 67206-2563

Wolf #3-12

Job Ticket: 16974

DST#: 7

ATTN: Frank Greenbaum

Test Start: 2013.02.14 @ 12:40:00

GENERAL INFORMATION:

Formation: **Lansing zone "J"**
 Deviated: No Whipstock: ft (KB)
 Test Type: Conventional Bottom Hole (Initial)
 Time Tool Opened: 14:06:30
 Tester: Shane Konzem
 Time Test Ended: 17:10:00
 Unit No: 3330-20/ Great Bend
 Interval: **3489.00 ft (KB) To 3510.00 ft (KB) (TVD)**
 Reference Elevations: 1980.00 ft (KB)
 Total Depth: 3510.00 ft (KB) (TVD)
 1972.00 ft (CF)
 Hole Diameter: 7.88 inches
 Hole Condition: Poor
 KB to GR/CF: 8.00 ft

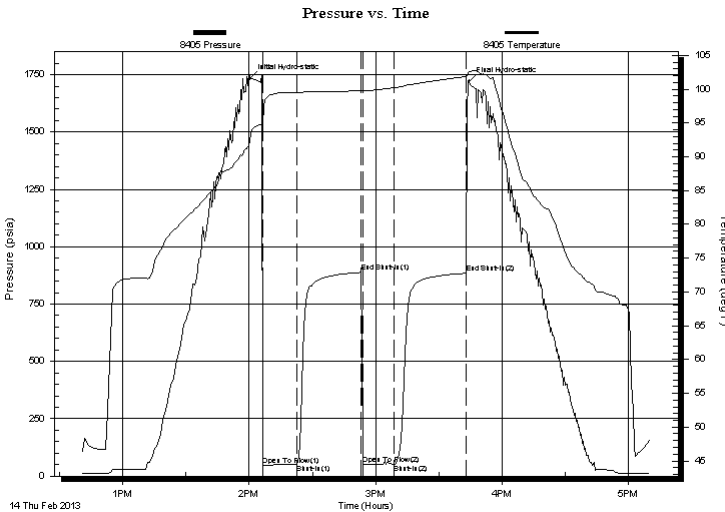
Serial #: 8405

Inside

Press @ Run Depth: 53.26 psia @ 3506.00 ft (KB) Capacity: 5000.00 psia
 Start Date: 2013.02.14 End Date: 2013.02.14 Last Calib.: 2013.02.14
 Start Time: 12:40:00 End Time: 17:10:00 Time On Btm: 2013.02.14 @ 14:00:30
 Time Off Btm: 2013.02.14 @ 15:44:30

TEST COMMENT: 1st open/ 15 minutes. Weak blow built to 1 inch in bucket of water.
 1st shut in/ 30 minutes. No blow back.
 2nd open/ 15 minutes. Weak blow to surface. blow died in 7 minutes.
 2nd shut in/ 30 minutes. No blow.

PRESSURE SUMMARY



Time (Min.)	Pressure (psia)	Temp (deg F)	Annotation
0	1732.02	92.45	Initial Hydro-static
6	46.84	94.72	Open To Flow (1)
22	51.09	99.50	Shut-In(1)
53	888.23	99.86	End Shut-In(1)
54	51.68	99.75	Open To Flow (2)
68	53.26	100.21	Shut-In(2)
103	884.51	101.91	End Shut-In(2)
104	1720.18	102.58	Final Hydro-static

Recovery

Length (ft)	Description	Volume (bbl)
0.00	No gas odor	0.00
30.00	oil cut mud	0.42
0.00	100% mud	0.00

Gas Rates

	Choke (inches)	Pressure (psia)	Gas Rate (Mcf/d)



DRILL STEM TEST REPORT

F.G. Holl Company LLC

12-20s-15w/ Barton

9431 E Central STE 100 Wichita Kansas 67206-2563

Wolf #3-12

Job Ticket: 16974

DST#: 7

ATTN: Frank Greenbaum

Test Start: 2013.02.14 @ 12:40:00

GENERAL INFORMATION:

Formation: **Lansing zone "J"**
 Deviated: No Whipstock: ft (KB)
 Test Type: Conventional Bottom Hole (Initial)
 Time Tool Opened: 14:06:30
 Tester: Shane Konzem
 Time Test Ended: 17:10:00
 Unit No: 3330-20/ Great Bend
 Interval: **3489.00 ft (KB) To 3510.00 ft (KB) (TVD)**
 Reference Elevations: 1980.00 ft (KB)
 Total Depth: 3510.00 ft (KB) (TVD)
 1972.00 ft (CF)
 Hole Diameter: 7.88 inches
 Hole Condition: Poor
 KB to GR/CF: 8.00 ft

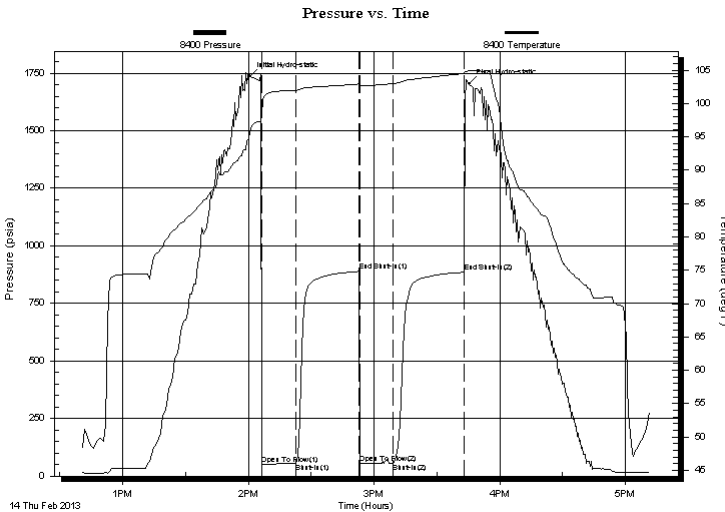
Serial #: 8400

Outside

Press @ Run Depth: 885.59 psia @ 3507.00 ft (KB) Capacity: 5000.00 psia
 Start Date: 2013.02.14 End Date: 2013.02.14 Last Calib.: 2013.02.14
 Start Time: 12:40:00 End Time: 17:11:30 Time On Btm: 2013.02.14 @ 14:00:30
 Time Off Btm: 2013.02.14 @ 15:45:30

TEST COMMENT: 1st open/ 15 minutes. Weak blow built to 1 inch in bucket of water.
 1st shut in/ 30 minutes. No blow back.
 2nd open/ 15 minutes. Weak blow to surface. blow died in 7 minutes.
 2nd shut in/ 30 minutes. No blow.

PRESSURE SUMMARY



Time (Min.)	Pressure (psia)	Temp (deg F)	Annotation
0	1736.72	95.80	Initial Hydro-static
6	51.08	98.37	Open To Flow (1)
22	54.66	101.98	Shut-In(1)
53	889.29	102.92	End Shut-In(1)
53	55.15	102.44	Open To Flow (2)
69	56.44	102.98	Shut-In(2)
103	885.59	104.51	End Shut-In(2)
105	1703.30	104.90	Final Hydro-static

Recovery

Length (ft)	Description	Volume (bbl)
0.00	No gas odor	0.00
30.00	oil cut mud	0.42
0.00	100% mud	0.00

Gas Rates

Choke (inches)	Pressure (psia)	Gas Rate (Mcf/d)



DRILL STEM TEST REPORT

TOOL DIAGRAM

F.G. Holl Company LLC

12-20s-15w/ Barton

9431 E Central STE 100 Wichita Kansas 67206-2563

Wolf #3-12

Job Ticket: 16974

DST#: 7

ATTN: Frank Greenbaum

Test Start: 2013.02.14 @ 12:40:00

Tool Information

Drill Pipe:	Length: 3489.00 ft	Diameter: 3.80 inches	Volume: 48.94 bbl	Tool Weight: 2000.00 lb
Heavy Wt. Pipe:	Length: 0.00 ft	Diameter: 0.00 inches	Volume: 0.00 bbl	Weight set on Packer: 20000.00 lb
Drill Collar:	Length: 0.00 ft	Diameter: 0.00 inches	Volume: 0.00 bbl	Weight to Pull Loose: lb
			<u>Total Volume: 48.94 bbl</u>	Tool Chased 6.00 ft
Drill Pipe Above KB:	28.00 ft			String Weight: Initial 44000.00 lb
Depth to Top Packer:	3489.00 ft			Final lb
Depth to Bottom Packer:	ft			
Interval between Packers:	21.00 ft			
Tool Length:	49.00 ft			
Number of Packers:	2	Diameter: 6.75 inches		
Tool Comments:				

Tool Description	Length (ft)	Serial No.	Position	Depth (ft)	Accum. Lengths
------------------	-------------	------------	----------	------------	----------------

SHut-InTool	5.00		Inside	3466.00	
Hydraulic Tool	5.00			3471.00	
Jars	6.00			3477.00	
Safety Joint	2.00			3479.00	
Packer	5.00			3484.00	28.00 Bottom Of Top Packer
Packer	5.00			3489.00	
Anchor	16.00			3505.00	
Recorder	1.00	8405	Inside	3506.00	
Recorder	1.00	8400	Outside	3507.00	
Bullnose	3.00			3510.00	21.00 Bottom Packers & Anchor
Total Tool Length:	49.00				



DRILL STEM TEST REPORT

FLUID SUMMARY

F.G. Holl Company LLC

12-20s-15w/ Barton

9431 E Central STE 100 Wichita Kansas 67206-2563

Wolf #3-12

Job Ticket: 16974

DST#: 7

ATTN: Frank Greenbaum

Test Start: 2013.02.14 @ 12:40:00

Mud and Cushion Information

Mud Type: Gel Chem

Cushion Type:

Oil API:

deg API

Mud Weight: 9.00 lb/gal

Cushion Length:

ft

Water Salinity:

ppm

Viscosity: 55.00 sec/qt

Cushion Volume:

bbbl

Water Loss: 8.00 in³

Gas Cushion Type:

Resistivity: ohm.m

Gas Cushion Pressure:

psia

Salinity: 7300.00 ppm

Filter Cake: 1.00 inches

Recovery Information

Recovery Table

Length ft	Description	Volume bbl
0.00	No gas odor	0.000
30.00	oil cut mud	0.421
0.00	100% mud	0.000

Total Length: 30.00 ft Total Volume: 0.421 bbl

Num Fluid Samples: 0

Num Gas Bombs: 0

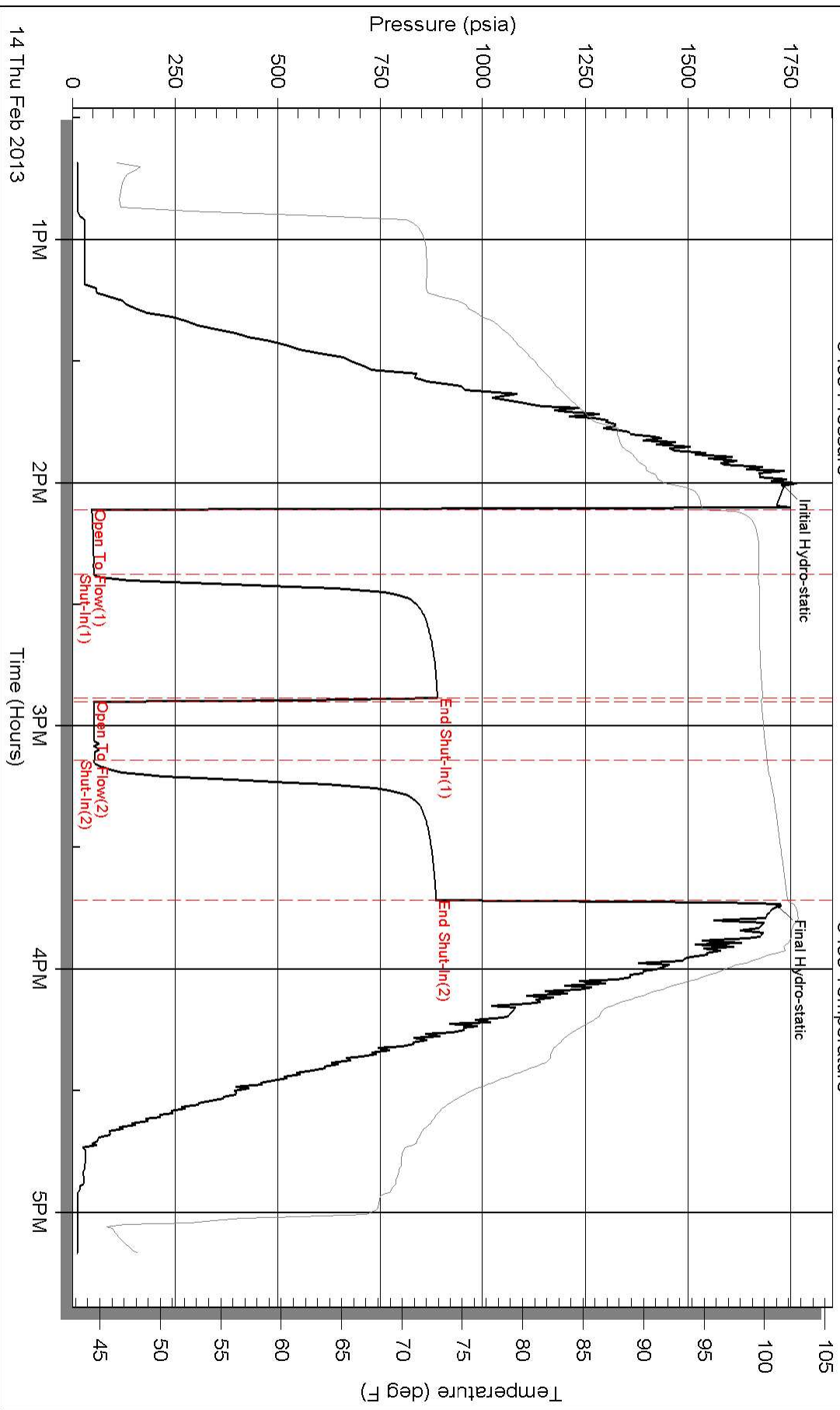
Serial #:

Laboratory Name:

Laboratory Location:

Recovery Comments:

Pressure vs. Time



Pressure vs. Time

