



DRILL STEM TEST REPORT

Prepared For: **F.G. Holl Company LLC**

9431 E Central STE 100 Wichita Kansas
67206-2563

ATTN: Frank Greenbaum

Wolf #3-12

12-20s-15w/ Barton

Start Date: 2013.02.17 @ 12:03:00

End Date: 2013.02.17 @ 16:35:00

Job Ticket #: 17509 DST #: 11

Superior Testers Enterprises LLC
PO Box 138 Great Bend KS 67530
1-800-792-6902

Printed: 2013.02.17 @ 16:44:13



DRILL STEM TEST REPORT

F.G. Holl Company LLC

12-20s-15w/ Barton

9431 E Central STE 100 Wichita Kansas 67206-2563

Wolf #3-12

Job Ticket: 17509

DST#: 11

ATTN: Frank Greenbaum

Test Start: 2013.02.17 @ 12:03:00

GENERAL INFORMATION:

Formation: **Lower Arbuckle**

Deviated: No Whipstock: ft (KB)

Time Tool Opened: 13:41:00

Time Test Ended: 16:35:00

Test Type: Conventional Bottom Hole (Initial)

Tester: Ken Swinney

Unit No: 3325 Great Bend/20

Interval: 3715.00 ft (KB) To 3755.00 ft (KB) (TVD)

Reference Elevations: 1980.00 ft (KB)

Total Depth: 3755.00 ft (KB) (TVD)

1972.00 ft (CF)

Hole Diameter: 7.88 inches Hole Condition: Fair

KB to GR/CF: 8.00 ft

Serial #: 6749 Inside

Press @ Run Depth: 49.04 psia @ 3751.00 ft (KB)

Capacity: 5000.00 psia

Start Date: 2013.02.17

End Date: 2013.02.17

Last Calib.: 2013.02.17

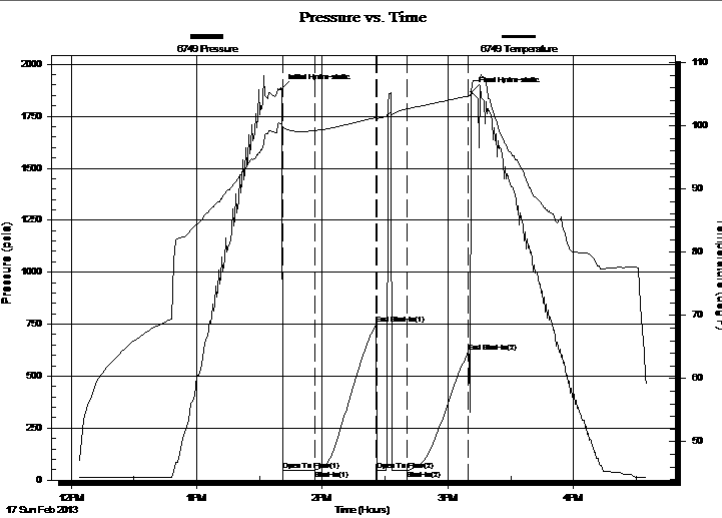
Start Time: 12:03:00

End Time: 16:35:00

Time On Btm: 2013.02.17 @ 13:40:30

Time Off Btm: 2013.02.17 @ 15:11:30

TEST COMMENT: 1ST Open 15 Minutes/No blow /Fitting loose at open on head/
 1ST Shut In 30 Mintues/No blow back
 2ND Open 15 Minutes/No blow /Flush tool didnt help
 2ND Shut In 30 Minutes/No blow back



PRESSURE SUMMARY

Time (Min.)	Pressure (psia)	Temp (deg F)	Annotation
0	1881.66	100.18	Initial Hydro-static
1	47.37	99.78	Open To Flow (1)
16	48.46	99.25	Shut-In(1)
45	749.46	101.30	End Shut-In(1)
46	48.22	101.17	Open To Flow (2)
60	49.04	102.68	Shut-In(2)
89	615.81	104.71	End Shut-In(2)
91	1866.45	106.61	Final Hydro-static

Recovery

Length (ft)	Description	Volume (bbl)
3.00	Mud 100%	0.04

Gas Rates

Choke (inches)	Pressure (psia)	Gas Rate (Mcf/d)



DRILL STEM TEST REPORT

F.G. Holl Company LLC

12-20s-15w/ Barton

9431 E Central STE 100 Wichita Kansas 67206-2563

Wolf #3-12

Job Ticket: 17509

DST#: 11

ATTN: Frank Greenbaum

Test Start: 2013.02.17 @ 12:03:00

GENERAL INFORMATION:

Formation: **Lower Arbuckle**

Deviated: No Whipstock: ft (KB)

Time Tool Opened: 13:41:00

Time Test Ended: 16:35:00

Test Type: Conventional Bottom Hole (Initial)

Tester: Ken Swinney

Unit No: 3325 Great Bend/20

Interval: **3715.00 ft (KB) To 3755.00 ft (KB) (TVD)**

Reference Elevations: 1980.00 ft (KB)

Total Depth: 3755.00 ft (KB) (TVD)

1972.00 ft (CF)

Hole Diameter: 7.88 inches Hole Condition: Fair

KB to GR/CF: 8.00 ft

Serial #: **6838** Outside

Press @ RunDepth: 618.22 psia @ 3752.00 ft (KB)

Capacity: 5000.00 psia

Start Date: 2013.02.17

End Date: 2013.02.17

Last Calib.: 2013.02.17

Start Time: 12:03:00

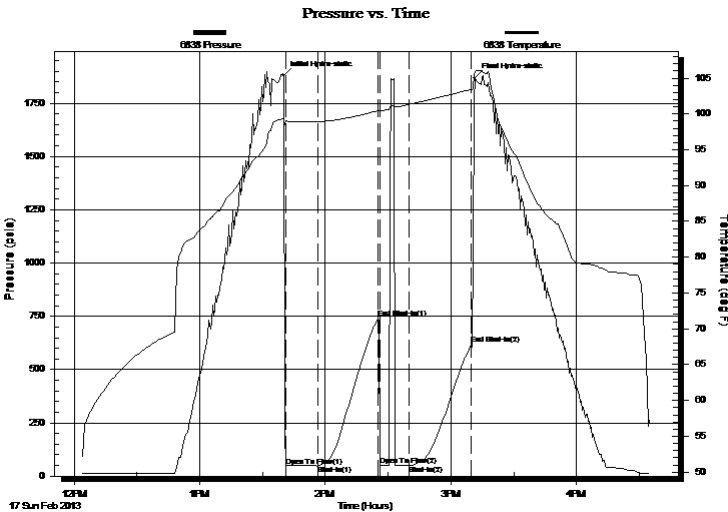
End Time: 16:35:00

Time On Btm: 2013.02.17 @ 13:40:00

Time Off Btm: 2013.02.17 @ 15:11:30

TEST COMMENT: 1ST Open 15 Minutes/No blow /Fitting loose at open on head/
 1ST Shut In 30 Mintues/No blow back
 2ND Open 15 Minutes/No blow /Flush tool didnt help
 2ND Shut In 30 Minutes/No blow back

PRESSURE SUMMARY



Time (Min.)	Pressure (psia)	Temp (deg F)	Annotation
0	1880.47	99.32	Initial Hydro-static
1	48.26	99.03	Open To Flow (1)
17	49.49	98.91	Shut-In(1)
45	740.77	100.43	End Shut-In(1)
46	49.17	100.41	Open To Flow (2)
60	50.00	101.33	Shut-In(2)
90	618.22	103.39	End Shut-In(2)
92	1868.85	105.92	Final Hydro-static

Recovery

Length (ft)	Description	Volume (bbl)
3.00	Mud 100%	0.04

Gas Rates

Choke (inches)	Pressure (psia)	Gas Rate (Mcf/d)



DRILL STEM TEST REPORT

TOOL DIAGRAM

F.G. Holl Company LLC

12-20s-15w/ Barton

9431 E Central STE 100 Wichita Kansas 67206-2563

Wolf #3-12

Job Ticket: 17509

DST#: 11

ATTN: Frank Greenbaum

Test Start: 2013.02.17 @ 12:03:00

Tool Information

Drill Pipe:	Length: 3710.00 ft	Diameter: 3.80 inches	Volume: 52.04 bbl	Tool Weight: 2000.00 lb
Heavy Wt. Pipe:	Length: 0.00 ft	Diameter: 0.00 inches	Volume: 0.00 bbl	Weight set on Packer: 20000.00 lb
Drill Collar:	Length: 0.00 ft	Diameter: 0.00 inches	Volume: 0.00 bbl	Weight to Pull Loose: 70000.00 lb
			<u>Total Volume: 52.04 bbl</u>	Tool Chased 0.00 ft
Drill Pipe Above KB:	22.00 ft			String Weight: Initial 42000.00 lb
Depth to Top Packer:	3715.00 ft			Final 42000.00 lb
Depth to Bottom Packer:	ft			
Interval between Packers:	40.00 ft			
Tool Length:	67.00 ft			
Number of Packers:	2	Diameter: 6.75 inches		
Tool Comments:				

Tool Description	Length (ft)	Serial No.	Position	Depth (ft)	Accum. Lengths
------------------	-------------	------------	----------	------------	----------------

Shut In Tool	5.00			3693.00	
Hydraulic Tool	5.00			3698.00	
Jars	5.00			3703.00	
Safety Joint	2.00			3705.00	
Packer	5.00			3710.00	27.00 Bottom Of Top Packer
Packer	5.00			3715.00	
Anchor	35.00			3750.00	
Recorder	1.00	6749	Inside	3751.00	
Recorder	1.00	6838	Outside	3752.00	
Bullnose	3.00			3755.00	40.00 Bottom Packers & Anchor
Total Tool Length:	67.00				



DRILL STEM TEST REPORT

FLUID SUMMARY

F.G. Holl Company LLC

12-20s-15w/ Barton

9431 E Central STE 100 Wichita Kansas 67206-2563

Wolf #3-12

Job Ticket: 17509

DST#: 11

ATTN: Frank Greenbaum

Test Start: 2013.02.17 @ 12:03:00

Mud and Cushion Information

Mud Type: Gel Chem

Cushion Type:

Oil API:

deg API

Mud Weight: 9.00 lb/gal

Cushion Length: ft

Water Salinity: ppm

Viscosity: 49.00 sec/qt

Cushion Volume: bbl

Water Loss: 10.20 in³

Gas Cushion Type:

Resistivity: ohm.m

Gas Cushion Pressure: psia

Salinity: 7100.00 ppm

Filter Cake: 1.00 inches

Recovery Information

Recovery Table

Length ft	Description	Volume bbl
3.00	Mud 100%	0.042

Total Length: 3.00 ft Total Volume: 0.042 bbl

Num Fluid Samples: 0

Num Gas Bombs: 0

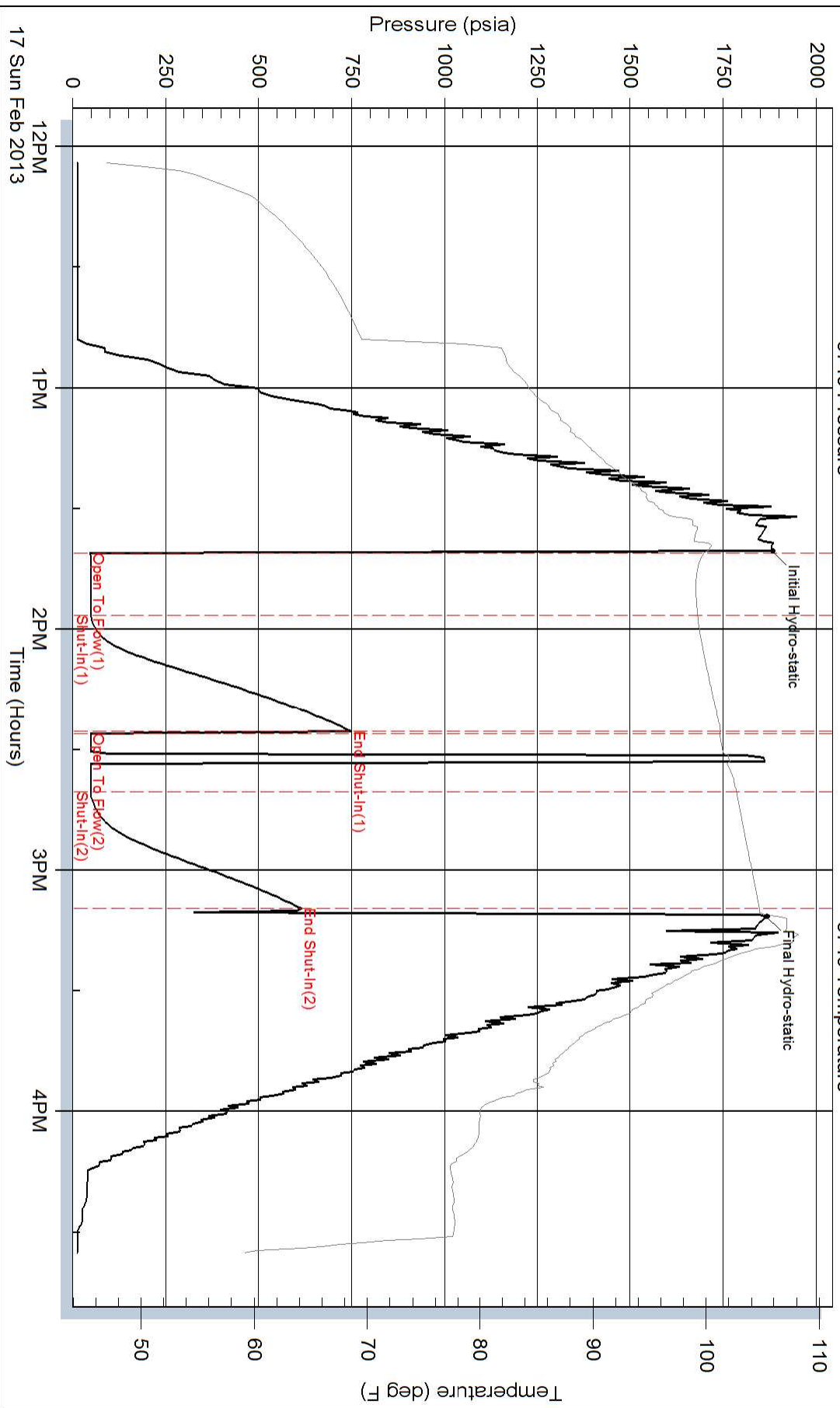
Serial #:

Laboratory Name:

Laboratory Location:

Recovery Comments:

Pressure vs. Time



Pressure vs. Time

