

Sandridge Energy

Ellis 3119 3-19H (Final)

Ellis 3119 3-19H SL 250 FNL, 1050 FEL

Comanche County, Kansas (Sandridge Energy) NAD27 / Grid

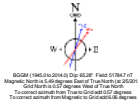
Not reference wellbore is Plan 1	
True vertical depths are referenced to Lariat 38 (KB)	Grid System NAD27 / Lambert Kansas SP, Southern Zone (11500), US Feet
Measured depths are referenced to Lariat 38 (KB)	North Reference: Grid north
Lariat 38 (KB) to Mean Sea Level: 2153.6 feet	Scale: True distance
Mean Sea Level to Mud line (At Slot: Ellis 3119 3-19H SL 250 FNL, 1050 FEL): -2134 feet	Depths are in feet
Coordinates are in feet referenced to Slot	Created by: broomert on 2/6/2013

Location Information

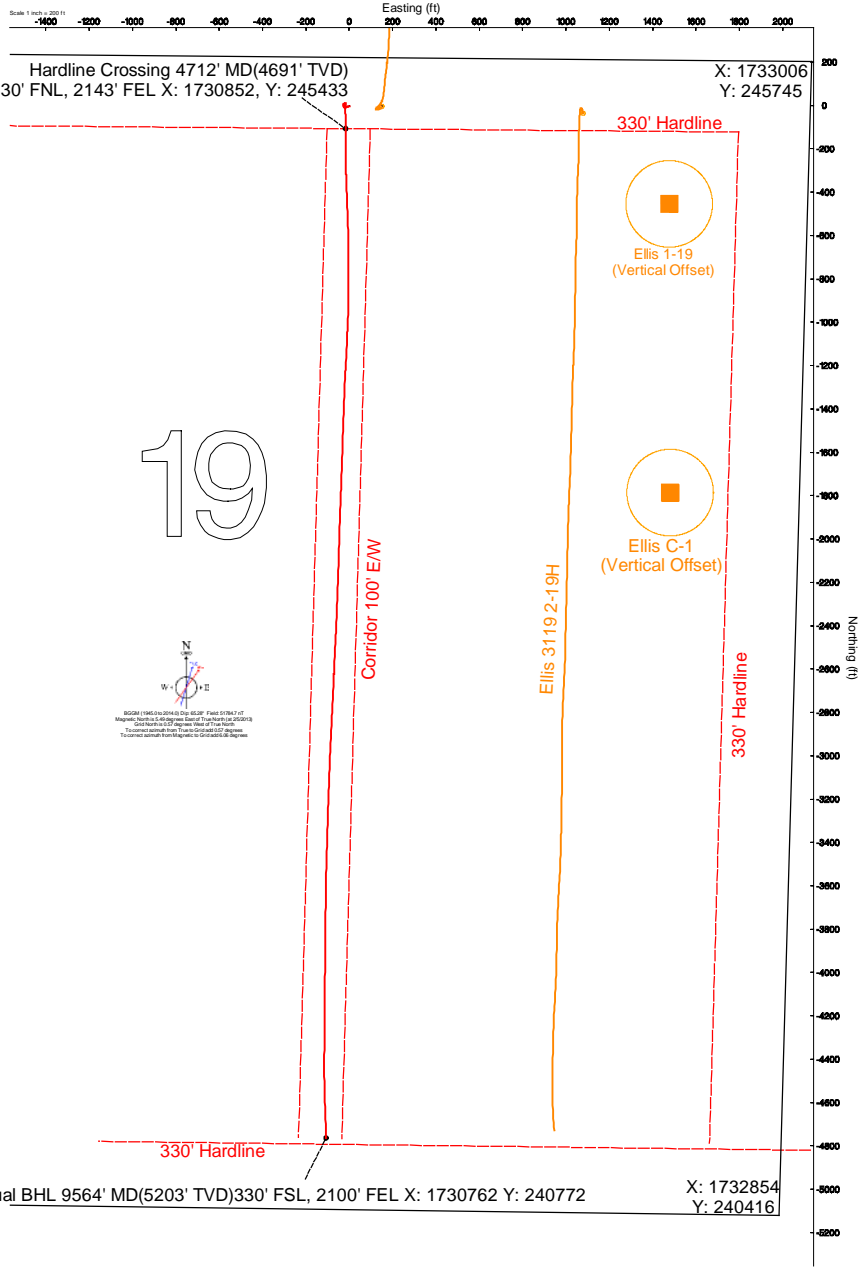
Facility Name	Grid East (US ft)	Grid North (US ft)	Latitude	Longitude		
Ellis 3119 3-19H Sec. 19-31S-19W	1730869.000	245538.000	37°20'14.418"N	99°25'32.481"W		
Slot	Local N (ft)	Local E (ft)	Grid East (US ft)	Grid North (US ft)	Latitude	Longitude
Ellis 3119 3-19H SL 250 FNL, 1050 FEL	0.00	0.00	1730869.000	245538.000	37°20'14.418"N	99°25'32.481"W
Lariat 38 (KB) to Mud line (At Slot: Ellis 3119 3-19H SL 250 FNL, 1050 FEL)					19.68	
Mean Sea Level to Mud line (At Slot: Ellis 3119 3-19H SL 250 FNL, 1050 FEL)					-2134	
Lariat 38 (KB) to Mean Sea Level					2153.6	



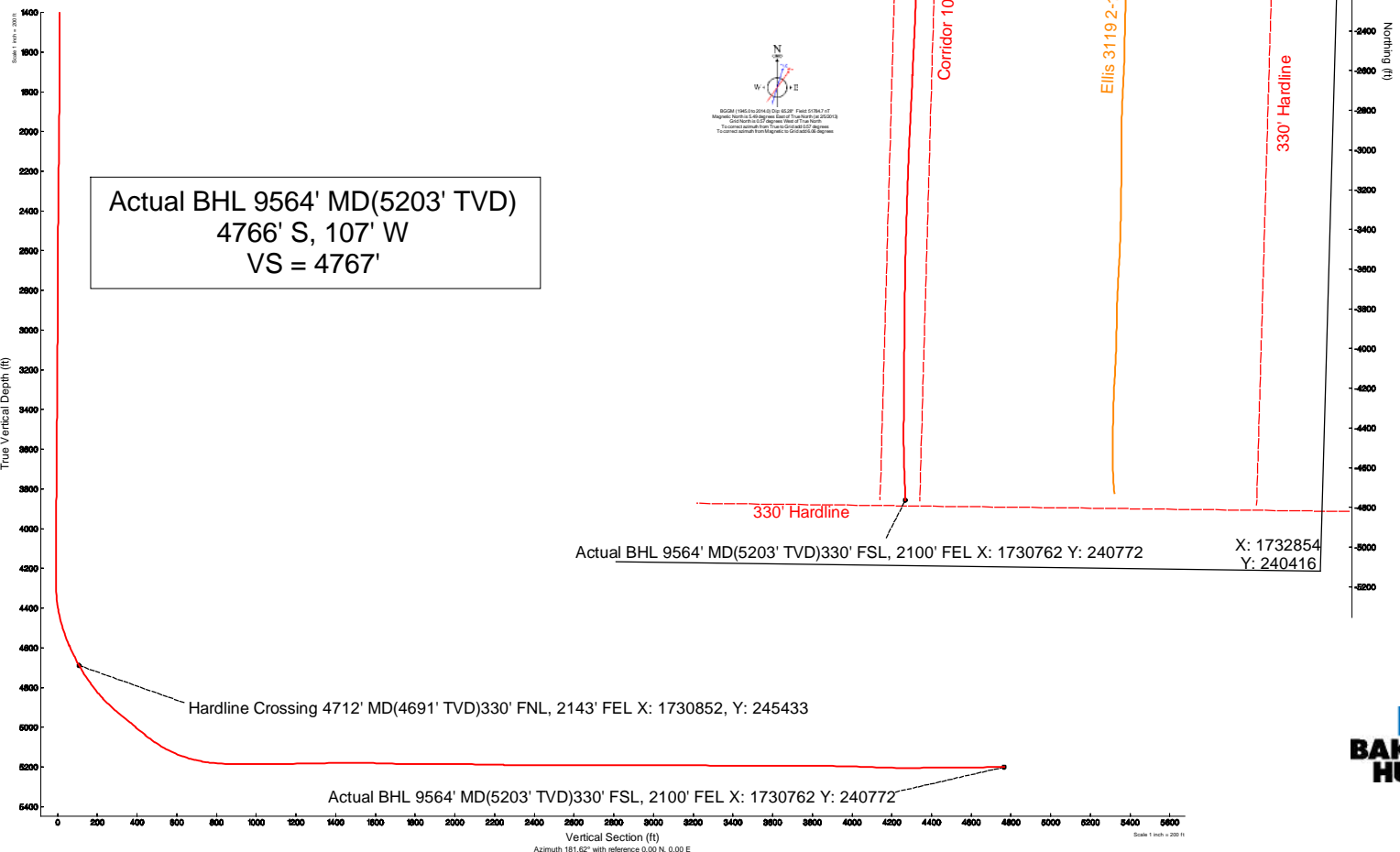
19



822M 1965 (1964) to 2014 (2013) (1963) Field 01/26/13
 Magnetic Declination is 4.45 degrees West of True North (at 2013)
 Declination is 4.45 degrees West of True North
 To correct magnetic bearings to Grid North, add 4.45 degrees
 To correct magnetic bearings to True North, subtract 4.45 degrees



Actual BHL 9564' MD(5203' TVD)
 4766' S, 107' W
 VS = 4767'



Actual Wellpath Report

Sandridge Ellis 3119 3-19H_Final Surveys.

Page 1 of 4

REFERENCE WELLPATH IDENTIFICATION			
Operator	Sandridge Energy	Slot	Ellis 3119 3-19H SL 250 FNL, 1050 FEL
Area	Kansas	Well	Subject
Field	Comanche County, Kansas (Sandridge Energy) NAD27 / Grid	Wellbore	Ellis 3119 3-19H Actual
Facility	Ellis 3119 3-19H Sec. 19-31S-19W		

REPORT SETUP INFORMATION			
Projection System	NAD27 / Lambert Kansas SP, Southern Zone (1502), US feet		
North Reference	Grid	Software System	WellArchitect 3.0.0
Convergence at slot	0.57° West	User	Broomarl
Scale	0.999987	Report Generated	3/14/2013 at 10:10:54 AM
Wellbore last revised	02-05-2013	Database/Source file	WA_OklahomaCity

WELLPATH LOCATION						
	Local coordinates		Grid coordinates		Geographic coordinates	
	North[ft]	East[ft]	Easting[US ft]	Northing[US ft]	Latitude	Longitude
Slot Location	0.00	0.00	1730869.00	245538.00	37°20'14.418"N	99°25'32.481"W
Facility Reference Pt			1730869.00	245538.00	37°20'14.418"N	99°25'32.481"W
Field Reference Pt			1773194.47	191302.75	37°11'22.030"N	99°16'42.810"W

WELLPATH DATUM			
Calculation method	Minimum curvature	Lariat 38 (KB) to Facility Vertical Datum	19.60ft
Horizontal Reference Pt	Slot	Lariat 38 (KB) to Mean Sea Level	2153.60ft
Vertical Reference Pt	Lariat 38 (KB)	Lariat 38 (KB) to Mud Line at Slot (Ellis 3119 3-19H SL 250 FNL, 1050 FEL)	19.60ft
MD Reference Pt	Lariat 38 (KB)	Section Origin	N 0.00, E 0.00 ft
Field Vertical Reference	Mean Sea Level	Section Azimuth	181.62°

Actual Wellpath Report

Sandridge Ellis 3119 3-19H_Final Surveys.

Page 2 of 4

REFERENCE WELLPATH IDENTIFICATION				
Operator	Sandridge Energy		Slot	Ellis 3119 3-19H SL 250 FNL, 1050 FEL
Area	Kansas		Well	Subject
Field	Comanche County, Kansas (Sandridge Energy) NAD27 / Grid		Wellbore	Ellis 3119 3-19H Actual
Facility	Ellis 3119 3-19H Sec. 19-31S-19W			

WELLPATH DATA (110 stations) † = interpolated/extrapolated station										
MD [ft]	Inclination [°]	Azimuth [°]	TVD [ft]	Vert Sect [ft]	North [ft]	East [ft]	Grid East [US ft]	Grid North [US ft]	DLS [°/100ft]	Log Comment
0.00	0.000	252.070	0.00	0.00	0.00	0.00	1730869.00	245538.00	0.00	
19.60	0.000	252.070	19.60	0.00	0.00	0.00	1730869.00	245538.00	0.00	
252.00	0.020	252.070	252.00	0.01	-0.01	-0.04	1730868.96	245537.99	0.01	
524.00	1.500	252.070	523.97	1.22	-1.12	-3.47	1730865.53	245536.88	0.54	
738.00	1.500	252.070	737.90	3.10	-2.85	-8.80	1730860.20	245535.15	0.00	
923.00	1.700	252.070	922.82	4.82	-4.44	-13.72	1730855.28	245533.56	0.11	
1156.00	0.690	252.070	1155.77	6.45	-5.93	-18.34	1730850.66	245532.07	0.43	
1625.00	0.460	290.630	1624.75	6.78	-6.14	-22.79	1730846.21	245531.86	0.09	
2100.00	0.780	344.260	2099.72	3.08	-2.36	-25.45	1730843.55	245535.64	0.13	
2575.00	0.500	311.930	2574.69	-1.35	2.14	-27.87	1730841.13	245540.14	0.09	
3050.00	0.220	22.350	3049.69	-3.54	4.37	-29.06	1730839.94	245542.37	0.10	
3525.00	0.830	29.230	3524.66	-7.45	8.21	-27.04	1730841.96	245546.21	0.13	
3620.00	0.890	63.560	3619.65	-8.40	9.14	-26.04	1730842.96	245547.14	0.54	
3714.00	0.790	75.990	3713.64	-8.92	9.63	-24.76	1730844.24	245547.63	0.22	
3809.00	0.820	72.630	3808.63	-9.32	9.99	-23.47	1730845.53	245547.99	0.06	
3904.00	0.930	48.980	3903.62	-10.06	10.70	-22.24	1730846.76	245548.70	0.39	
3999.00	0.850	75.470	3998.61	-10.78	11.38	-20.98	1730848.02	245549.38	0.44	
4094.00	0.930	72.100	4093.60	-11.23	11.79	-19.56	1730849.44	245549.79	0.10	
4189.00	0.520	79.230	4188.59	-11.58	12.11	-18.41	1730850.59	245550.11	0.44	
4220.00	0.480	46.970	4219.59	-11.71	12.23	-18.17	1730850.83	245550.22	0.90	
4251.00	0.590	81.920	4250.59	-11.82	12.34	-17.92	1730851.08	245550.34	1.09	
4283.00	1.370	150.120	4282.59	-11.53	12.03	-17.57	1730851.43	245550.03	3.98	
4315.00	2.900	180.540	4314.56	-10.39	10.89	-17.38	1730851.62	245548.89	5.79	
4347.00	5.040	188.740	4346.49	-8.19	8.69	-17.60	1730851.40	245546.69	6.90	
4378.00	7.220	187.130	4377.31	-4.89	5.41	-18.05	1730850.95	245543.41	7.05	
4410.00	10.210	183.030	4408.93	-0.06	0.58	-18.45	1730850.55	245538.58	9.54	
4441.00	12.560	181.300	4439.32	6.06	-5.53	-18.67	1730850.33	245532.47	7.66	
4473.00	14.660	179.280	4470.42	13.59	-13.06	-18.70	1730850.30	245524.94	6.73	
4505.00	17.280	178.160	4501.18	22.38	-21.86	-18.50	1730850.50	245516.14	8.24	
4536.00	19.440	178.370	4530.60	32.13	-31.62	-18.20	1730850.80	245506.38	6.97	
4568.00	21.570	179.100	4560.57	43.32	-42.83	-17.96	1730851.04	245495.17	6.70	
4600.00	23.340	179.450	4590.15	55.53	-55.05	-17.81	1730851.19	245482.95	5.55	
4631.00	25.090	178.800	4618.42	68.23	-67.76	-17.61	1730851.39	245470.24	5.71	
4663.00	26.620	179.590	4647.21	82.18	-81.72	-17.42	1730851.58	245456.29	4.90	
4695.00	28.000	179.710	4675.65	96.85	-96.40	-17.33	1730851.67	245441.60	4.32	
4712.00	29.124	179.422	4690.58	104.97	-104.52	-17.27	1730851.73	245433.48	6.66	Hardline Crossing 4712' MD(4691' TVD)330' FNL, 2143' FEL X: 173085
4726.00	30.050	179.200	4702.75	111.88	-111.44	-17.18	1730851.82	245426.57	6.66	
4758.00	32.520	179.080	4730.10	128.48	-128.05	-16.93	1730852.07	245409.95	7.72	
4790.00	34.490	178.850	4756.78	146.12	-145.71	-16.61	1730852.39	245392.29	6.17	
4821.00	36.270	179.320	4782.05	164.05	-163.66	-16.33	1730852.67	245374.35	5.81	
4853.00	38.000	180.050	4807.56	183.36	-182.97	-16.22	1730852.78	245355.03	5.58	
4885.00	40.180	180.330	4832.40	203.53	-203.15	-16.29	1730852.71	245334.85	6.83	
4916.00	42.340	179.960	4855.70	223.97	-223.59	-16.34	1730852.66	245314.41	7.01	
4948.00	44.540	180.230	4878.93	245.96	-245.59	-16.38	1730852.62	245292.41	6.90	
4980.00	47.640	179.130	4901.13	269.00	-268.64	-16.25	1730852.75	245269.36	10.00	

Actual Wellpath Report

Sandridge Ellis 3119 3-19H_Final Surveys.

Page 3 of 4

REFERENCE WELLPATH IDENTIFICATION				
Operator	Sandridge Energy		Slot	Ellis 3119 3-19H SL 250 FNL, 1050 FEL
Area	Kansas		Well	Subject
Field	Comanche County, Kansas (Sandridge Energy) NAD27 / Grid		Wellbore	Ellis 3119 3-19H Actual
Facility	Ellis 3119 3-19H Sec. 19-31S-19W			

WELLPATH DATA (110 stations)										
MD [ft]	Inclination [°]	Azimuth [°]	TVD [ft]	Vert Sect [ft]	North [ft]	East [ft]	Grid East [US ft]	Grid North [US ft]	DLS [°/100ft]	Log Comment
5011.00	50.740	178.540	4921.38	292.43	-292.10	-15.77	1730853.23	245245.91	10.10	
5043.00	51.800	178.640	4941.40	317.36	-317.05	-15.15	1730853.85	245220.95	3.32	
5075.00	50.210	178.260	4961.54	342.19	-341.92	-14.48	1730854.52	245196.09	5.05	
5106.00	49.740	177.720	4981.48	365.88	-365.64	-13.65	1730855.35	245172.37	2.02	
5138.00	49.990	177.670	5002.10	390.29	-390.08	-12.66	1730856.34	245147.92	0.79	
5169.00	50.900	177.980	5021.84	414.13	-413.97	-11.76	1730857.24	245124.04	3.04	
5201.00	51.160	177.730	5041.97	438.96	-438.83	-10.83	1730858.17	245099.18	1.01	
5233.00	53.180	177.610	5061.59	464.17	-464.08	-9.80	1730859.20	245073.92	6.32	
5264.00	56.060	177.470	5079.54	489.38	-489.33	-8.71	1730860.29	245048.68	9.30	
5296.00	59.490	177.810	5096.60	516.38	-516.38	-7.60	1730861.40	245021.63	10.76	
5328.00	61.860	178.680	5112.27	544.23	-544.26	-6.75	1730862.25	244993.75	7.78	
5359.00	64.850	179.430	5126.18	571.91	-571.96	-6.29	1730862.71	244966.05	9.88	
5391.00	68.090	179.610	5138.95	601.22	-601.29	-6.05	1730862.95	244936.71	10.14	
5423.00	71.010	179.730	5150.13	631.19	-631.27	-5.88	1730863.12	244906.74	9.13	
5454.00	73.640	179.850	5159.54	660.71	-660.81	-5.77	1730863.23	244877.20	8.49	
5486.00	76.910	179.340	5167.67	691.63	-691.75	-5.55	1730863.45	244846.26	10.33	
5518.00	79.800	179.870	5174.13	722.95	-723.09	-5.33	1730863.67	244814.92	9.18	
5549.00	82.030	179.670	5179.03	753.54	-753.70	-5.21	1730863.79	244784.31	7.22	
5570.00	84.200	179.920	5181.54	774.38	-774.54	-5.13	1730863.87	244763.47	10.40	
5618.00	86.820	179.780	5185.30	822.21	-822.39	-5.01	1730863.99	244715.62	5.47	
5649.00	88.680	180.040	5186.52	853.17	-853.37	-4.96	1730864.04	244684.65	6.06	
5679.00	88.550	179.350	5187.24	883.14	-883.36	-4.80	1730864.20	244654.66	2.34	
5741.00	90.180	181.840	5187.93	945.12	-945.34	-5.45	1730863.55	244592.67	4.80	
5833.00	90.340	182.710	5187.51	1037.11	-1037.27	-9.10	1730859.90	244500.75	0.96	
5925.00	90.430	182.590	5186.89	1129.09	-1129.17	-13.35	1730855.65	244408.85	0.16	
6016.00	91.200	183.230	5185.60	1220.06	-1220.04	-17.97	1730851.03	244317.98	1.10	
6108.00	91.080	182.260	5183.77	1312.02	-1311.92	-22.37	1730846.63	244226.10	1.06	
6199.00	90.960	182.320	5182.15	1403.00	-1402.83	-26.01	1730842.99	244135.19	0.15	
6291.00	90.120	181.750	5181.28	1495.00	-1494.77	-29.28	1730839.72	244043.26	1.10	
6383.00	87.940	181.610	5182.84	1586.98	-1586.71	-31.97	1730837.03	243951.32	2.37	
6474.00	88.710	182.140	5185.50	1677.94	-1677.62	-34.95	1730834.05	243860.41	1.03	
6567.00	89.080	182.340	5187.29	1770.91	-1770.53	-38.58	1730830.42	243767.50	0.45	
6661.00	90.280	182.460	5187.82	1864.90	-1864.45	-42.52	1730826.48	243673.58	1.28	
6757.00	89.940	181.380	5187.63	1960.90	-1960.39	-45.74	1730823.26	243577.64	1.18	
6852.00	89.140	181.620	5188.40	2055.89	-2055.35	-48.22	1730820.78	243482.68	0.88	
6946.00	88.710	182.110	5190.16	2149.88	-2149.29	-51.28	1730817.72	243388.75	0.69	
7042.00	89.170	182.150	5191.94	2245.86	-2245.20	-54.85	1730814.15	243292.83	0.48	
7137.00	89.970	182.320	5192.65	2340.85	-2340.13	-58.55	1730810.45	243197.91	0.86	
7231.00	89.450	182.460	5193.12	2434.84	-2434.04	-62.47	1730806.53	243103.99	0.57	
7326.00	90.250	182.930	5193.37	2529.82	-2528.94	-66.94	1730802.06	243009.10	0.98	
7421.00	89.660	182.460	5193.45	2624.80	-2623.83	-71.41	1730797.59	242914.21	0.79	
7516.00	90.800	183.050	5193.07	2719.78	-2718.72	-75.97	1730793.03	242819.32	1.35	
7611.00	90.150	182.640	5192.28	2814.76	-2813.60	-80.69	1730788.31	242724.44	0.81	
7706.00	89.170	182.740	5192.84	2909.74	-2908.49	-85.15	1730783.85	242629.55	1.04	
7801.00	89.910	182.420	5193.60	3004.72	-3003.39	-89.42	1730779.58	242534.65	0.85	

Actual Wellpath Report

Sandridge Ellis 3119 3-19H_Final Surveys.

Page 4 of 4

REFERENCE WELLPATH IDENTIFICATION				
Operator	Sandridge Energy		Slot	Ellis 3119 3-19H SL 250 FNL, 1050 FEL
Area	Kansas		Well	Subject
Field	Comanche County, Kansas (Sandridge Energy) NAD27 / Grid		Wellbore	Ellis 3119 3-19H Actual
Facility	Ellis 3119 3-19H Sec. 19-31S-19W			

WELLPATH DATA (110 stations)										
MD [ft]	Inclination [°]	Azimuth [°]	TVD [ft]	Vert Sect [ft]	North [ft]	East [ft]	Grid East [US ft]	Grid North [US ft]	DLS [°/100ft]	Log Comment
7827.00	90.090	182.260	5193.60	3030.72	-3029.37	-90.48	1730778.52	242508.68	0.93	
7922.00	90.090	182.300	5193.46	3125.71	-3124.29	-94.26	1730774.74	242413.75	0.04	
8017.00	89.110	181.910	5194.12	3220.70	-3219.23	-97.75	1730771.25	242318.82	1.11	
8111.00	88.980	181.540	5195.69	3314.69	-3313.17	-100.58	1730768.42	242224.88	0.42	
8206.00	89.940	181.920	5196.58	3409.68	-3408.12	-103.45	1730765.55	242129.93	1.09	
8302.00	89.540	181.310	5197.02	3505.68	-3504.08	-106.16	1730762.85	242033.97	0.76	
8397.00	90.710	181.210	5196.81	3600.68	-3599.06	-108.25	1730760.76	241939.00	1.24	
8491.00	89.140	180.610	5196.93	3694.67	-3693.04	-109.74	1730759.26	241845.01	1.79	
8586.00	89.850	179.790	5197.77	3789.63	-3788.04	-110.07	1730758.93	241750.02	1.14	
8681.00	90.150	181.370	5197.77	3884.61	-3883.03	-111.03	1730757.97	241655.03	1.69	
8776.00	88.300	180.500	5199.05	3979.59	-3978.00	-112.58	1730756.42	241560.06	2.15	
8871.00	87.880	180.340	5202.22	4074.52	-4072.95	-113.28	1730755.72	241465.12	0.47	
8966.00	88.030	179.880	5205.61	4169.43	-4167.88	-113.46	1730755.54	241370.18	0.51	
9061.00	89.480	180.790	5207.67	4264.38	-4262.86	-114.02	1730754.99	241275.21	1.80	
9156.00	92.400	181.060	5206.12	4359.35	-4357.82	-115.55	1730753.45	241180.24	3.09	
9251.00	90.220	179.590	5203.94	4454.29	-4452.79	-116.09	1730752.92	241085.28	2.77	
9346.00	89.780	178.930	5203.94	4549.21	-4547.78	-114.86	1730754.14	240990.29	0.83	
9441.00	90.220	177.530	5203.94	4644.04	-4642.73	-111.93	1730757.08	240895.34	1.54	
9525.00	90.520	178.120	5203.40	4727.85	-4726.67	-108.74	1730760.26	240811.40	0.79	
9564.00	90.520	178.120	5203.05	4766.78	-4765.65	-107.46	1730761.54	240772.43	0.00	Actual BHL 9564' MD(5203' TVD)330' FSL, 2100' FEL X: 1730762 Y

TARGETS									
Name	MD [ft]	TVD [ft]	North [ft]	East [ft]	Grid East [US ft]	Grid North [US ft]	Latitude	Longitude	Shape
PBHL 330 FSL, 2130 FEL		5200.64	-4766.07	-135.00	1730734.00	240772.00	37°19'27.284"N	99°25'33.566"W	point

WELLPATH COMPOSITION - Ref Wellbore: Ellis 3119 3-19H Actual Ref Wellpath: AWP - Final				
Start MD [ft]	End MD [ft]	Positional Uncertainty Model	Log Name/Comment	Wellbore
19.60	923.00	EMS (Standard)	RIG Single Shot Surveys	Ellis 3119 3-19H Actual
923.00	9525.00	NaviTrak (Standard)	INTEQ MWD	Ellis 3119 3-19H Actual
9525.00	9564.00	Blind Drilling (std)	Projection to bit	Ellis 3119 3-19H Actual