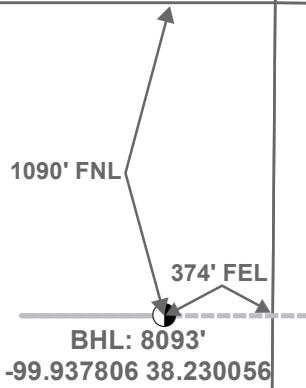


Section 10  
21S 24W

Section 11  
21S 24W



Hodgeman County

Section 15  
21S 24W

Section 14  
21S 24W

Bottom Perf: 5892'  
-99.937864 38.224019

Top Perf: 4998'  
-99.937875 38.221593

Miss Entry: 4854'  
-99.937839 38.221165

CARISSA SWD 2-15

CARISSA SWD 1-15

FRUSHER 1-15H

Section 22  
21S 24W

Section 23  
21S 24W



Actual Bottom-Hole Location of Frusher 1-15H  
Hodgeman County, Kansas  
T&R: 21S 24W  
Section: 15, 374' FEL & 1090' FNL  
Long/Lat: -99.937806 38.230056

1 in = 668 ft

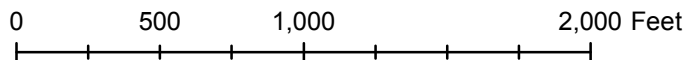


● Actual BH Location

\* SandRidge Wells

--- Perf

□ Sections



Draftsman:

Aaron Birk

Draft Date: 5/8/2013

Drawing Name/Number:

Addendum\_Frusher1-15H.mxd

Coordinate System:

NAD 1927 State Plane  
Kansas South FIPS: 1502