



**TEMPORARY ABANDONMENT WELL APPLICATION**

All blanks must be complete

OPERATOR: License# \_\_\_\_\_  
Name: \_\_\_\_\_  
Address 1: \_\_\_\_\_  
Address 2: \_\_\_\_\_  
City: \_\_\_\_\_ State: \_\_\_\_\_ Zip: \_\_\_\_\_ + \_\_\_\_\_  
Contact Person: \_\_\_\_\_  
Phone: ( \_\_\_\_\_ ) \_\_\_\_\_  
Contact Person Email: \_\_\_\_\_  
Field Contact Person: \_\_\_\_\_  
Field Contact Person Phone: ( \_\_\_\_\_ ) \_\_\_\_\_

API No. 15- \_\_\_\_\_  
Spot Description: \_\_\_\_\_  
\_\_\_\_ - \_\_\_\_ - \_\_\_\_ - \_\_\_\_ Sec. \_\_\_\_\_ Twp. \_\_\_\_\_ S. R. \_\_\_\_\_  E  W  
\_\_\_\_\_ feet from  N /  S Line of Section  
\_\_\_\_\_ feet from  E /  W Line of Section  
GPS Location: Lat: \_\_\_\_\_, Long: \_\_\_\_\_  
(e.g. xx.xxxxx) (e.g. -xxx.xxxxx)  
Datum:  NAD27  NAD83  WGS84  
County: \_\_\_\_\_ Elevation: \_\_\_\_\_  GL  KB  
Lease Name: \_\_\_\_\_ Well #: \_\_\_\_\_  
Well Type: (check one)  Oil  Gas  OG  WSW  Other: \_\_\_\_\_  
 SWD Permit #: \_\_\_\_\_  ENHR Permit #: \_\_\_\_\_  
 Gas Storage Permit #: \_\_\_\_\_  
Spud Date: \_\_\_\_\_ Date Shut-In: \_\_\_\_\_

	Conductor	Surface	Production	Intermediate	Liner	Tubing
Size						
Setting Depth						
Amount of Cement						
Top of Cement						
Bottom of Cement						

Casing Fluid Level from Surface: \_\_\_\_\_ How Determined? \_\_\_\_\_ Date: \_\_\_\_\_

Casing Squeeze(s): \_\_\_\_\_ to \_\_\_\_\_ w / \_\_\_\_\_ sacks of cement, \_\_\_\_\_ to \_\_\_\_\_ w / \_\_\_\_\_ sacks of cement. Date: \_\_\_\_\_  
(top) (bottom) (top) (bottom)

Do you have a valid Oil & Gas Lease?  Yes  No

Depth and Type:  Junk in Hole at \_\_\_\_\_  Tools in Hole at \_\_\_\_\_ Casing Leaks:  Yes  No Depth of casing leak(s): \_\_\_\_\_  
(depth) (depth)

Type Completion:  ALT. I  ALT. II Depth of:  DV Tool: \_\_\_\_\_ w / \_\_\_\_\_ sacks of cement  Port Collar: \_\_\_\_\_ w / \_\_\_\_\_ sack of cement  
(depth) (depth)

Packer Type: \_\_\_\_\_ Size: \_\_\_\_\_ Inch Set at: \_\_\_\_\_ Feet

Total Depth: \_\_\_\_\_ Plug Back Depth: \_\_\_\_\_ Plug Back Method: \_\_\_\_\_

**Geological Data:**

Formation Name	Formation Top	Formation Base	Completion Information
1. _____	At: _____	to _____ Feet	Perforation Interval _____ to _____ Feet or Open Hole Interval _____ to _____ Feet
2. _____	At: _____	to _____ Feet	Perforation Interval _____ to _____ Feet or Open Hole Interval _____ to _____ Feet

UNDER PENALTY OF PERJURY I HEREBY ATTEST THAT THE INFORMATION CONTAINED HEREIN IS TRUE AND CORRECT TO THE BEST OF MY KNOWLEDGE

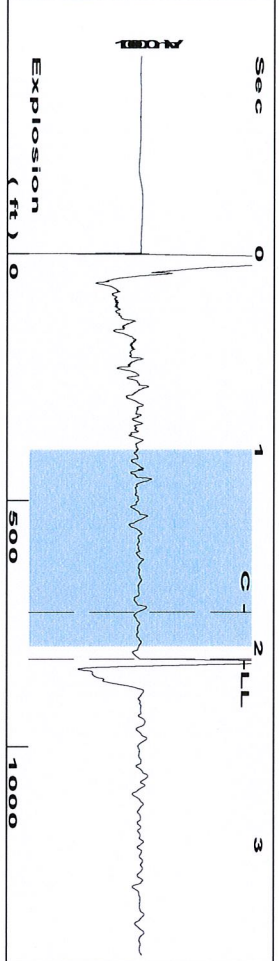
Submitted Electronically

<b>Do NOT Write in This Space - KCC USE ONLY</b>	Date Tested: _____	Results: _____	Date Plugged: _____	Date Repaired: _____	Date Put Back in Service: _____
	Review Completed by: _____ Comments: _____				
TA Approved: <input type="checkbox"/> Yes <input type="checkbox"/> Denied Date: _____					

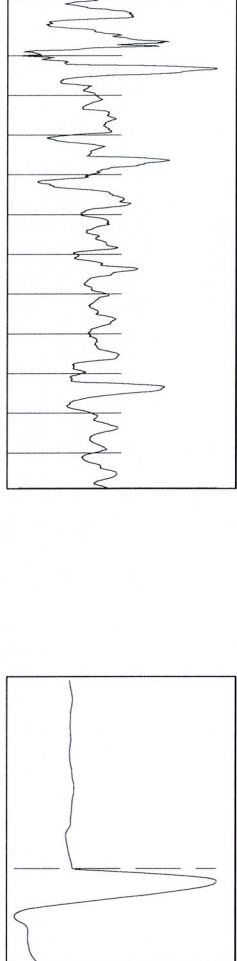
**Mail to the Appropriate KCC Conservation Office:**

	KCC District Office #1 - 210 E. Frontview, Suite A, Dodge City, KS 67801	Phone 620.225.8888
	KCC District Office #2 / UPGS - 3450 N. Rock Road, Building 600, Suite 601, Wichita, KS 67226	Phone 316.630.4000
	KCC District Office #3 - 1500 SW Seventh Steet, Chanute, KS 66720	Phone 620.432.2300
	KCC District Office #4 - 2301 E. 13th Street, Hays, KS 67601-2651	Phone 785.625.0550

Group: Battle Creek Well: Armknecht 22-16 (acquired on: 03/06/13 14:01:45)



Filter Type High Pass Automatic Collar Count Yes  
 Manual Acoustic Velo 781.751 ft/s Manual JTS/sec 12.3305  
 Time 2.057 sec  
 Joints 25.9286 Jts  
 Depth 821.94 ft

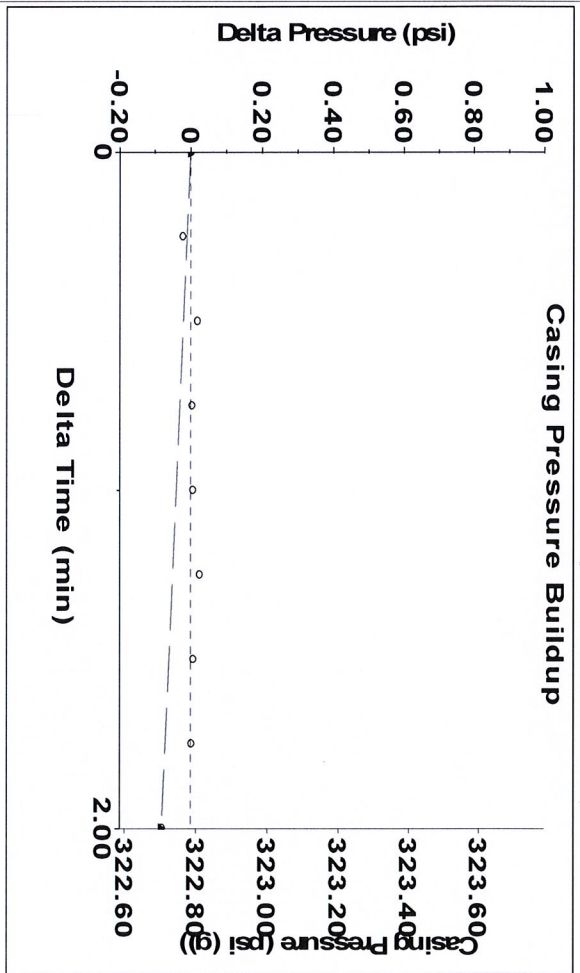


Analysis Method: Automatic

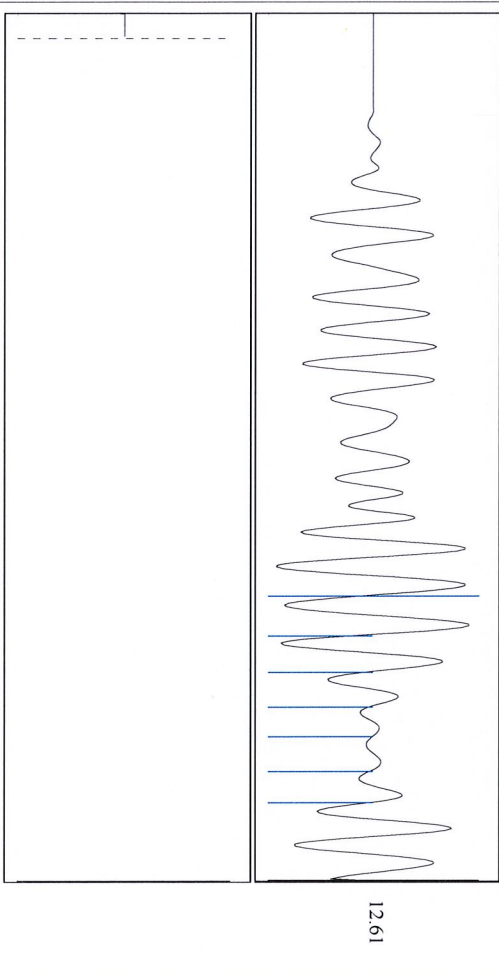
Group: Battle Creek Well: Armknecht 22-16 (acquired on: 03/06/13 14:01:45)

Production	Potential	Casing Pressure	Producing
Oil -*- BBL/D	Oil -*- BBL/D	322.8 psi (g)	Casing % Liquid
Water -*- BBL/D	Water -*- BBL/D	Casing Pressure Buildup	100 %
Gas -*- Mscf/D	Gas -*- Mscf/D	-0.082 psi	% Liquid
IPR Method	Vogel	2.00 min	Liquid Stream Below Tubing
PBHP/SBHP	Production Efficiency	Gas/Liquid Interface Pressure	Oil 0 %
	0.0	335.0 psi (g)	Water 100 %
Oil 40 deg API	Liquid Level Depth	Liquid Level Depth	Liquid Below Tubing
Water 1.05 Sp.Gr:H2O	821.94 ft	821.94 ft	100 %
Gas 1.08 Sp.Gr:AIR	Tubing Intake Depth	1444.23 ft	Tubing Intake
Acoustic Velocity	Formation Depth	1480.00 ft	617.9 psi (g)
	799.16 ft/s	1480.00 ft	Producing BHP
Formation Submergence			634.2 psi (g)
Total Gaseous Liquid Column HT (TVD)			Static BHP
Equivalent Gas Free Liquid HT (TVD)			300.0 psi (g)

Group: Battle Creek Well: Armknecht 22-16 (acquired on: 03/06/13 14:01:45)



Group: Battle Creek Well: Armknecht 22-16 (acquired on: 03/06/13 14:01:45)



Acoustic Velocity 799.16 ft/s Joints counted 6  
 Joints Per Second 12.605 ft/sec Joints to liquid level 14.3305  
 Depth to liquid level 821.936 ft Filter Width 10.3305  
 Automatic Collar Count Yes Time to 1st Collar 1.344 1.82