



KANSAS CORPORATION COMMISSION 1123118
OIL & GAS CONSERVATION DIVISION

Form ACO-1

June 2009

Form Must Be Typed
Form must be Signed
All blanks must be Filled

WELL COMPLETION FORM
WELL HISTORY - DESCRIPTION OF WELL & LEASE

OPERATOR: License # _____

Name: _____

Address 1: _____

Address 2: _____

City: _____ State: _____ Zip: _____ + _____

Contact Person: _____

Phone: (_____) _____

CONTRACTOR: License # _____

Name: _____

Wellsite Geologist: _____

Purchaser: _____

Designate Type of Completion:

- New Well Re-Entry Workover
- Oil WSW SWD SIOW
- Gas D&A ENHR SIGW
- OG GSW Temp. Abd.
- CM (Coal Bed Methane)
- Cathodic Other (Core, Expl., etc.): _____

If Workover/Re-entry: Old Well Info as follows:

Operator: _____

Well Name: _____

Original Comp. Date: _____ Original Total Depth: _____

- Deepening Re-perf. Conv. to ENHR Conv. to SWD
- Conv. to GSW
- Plug Back: _____ Plug Back Total Depth _____
- Commingled Permit #: _____
- Dual Completion Permit #: _____
- SWD Permit #: _____
- ENHR Permit #: _____
- GSW Permit #: _____

Spud Date or Recompletion Date Date Reached TD Completion Date or Recompletion Date

API No. 15 - _____

Spot Description: _____

_____ - _____ - _____ Sec. _____ Twp. _____ S. R. _____ East West

_____ Feet from North / South Line of Section

_____ Feet from East / West Line of Section

Footages Calculated from Nearest Outside Section Corner:

- NE NW SE SW

County: _____

Lease Name: _____ Well #: _____

Field Name: _____

Producing Formation: _____

Elevation: Ground: _____ Kelly Bushing: _____

Total Depth: _____ Plug Back Total Depth: _____

Amount of Surface Pipe Set and Cemented at: _____ Feet

Multiple Stage Cementing Collar Used? Yes No

If yes, show depth set: _____ Feet

If Alternate II completion, cement circulated from: _____

feet depth to: _____ w/ _____ sx cmt.

Drilling Fluid Management Plan

(Data must be collected from the Reserve Pit)

Chloride content: _____ ppm Fluid volume: _____ bbls

Dewatering method used: _____

Location of fluid disposal if hauled offsite: _____

Operator Name: _____

Lease Name: _____ License #: _____

Quarter _____ Sec. _____ Twp. _____ S. R. _____ East West

County: _____ Permit #: _____

AFFIDAVIT

I am the affiant and I hereby certify that all requirements of the statutes, rules and regulations promulgated to regulate the oil and gas industry have been fully complied with and the statements herein are complete and correct to the best of my knowledge.

Submitted Electronically

KCC Office Use ONLY

- Letter of Confidentiality Received
Date: _____
- Confidential Release Date: _____
- Wireline Log Received
- Geologist Report Received
- UIC Distribution
- ALT I II III Approved by: _____ Date: _____



Operator Name: _____ Lease Name: _____ Well #: _____

Sec. _____ Twp. _____ S. R. _____ East West County: _____

INSTRUCTIONS: Show important tops and base of formations penetrated. Detail all cores. Report all final copies of drill stems tests giving interval tested, time tool open and closed, flowing and shut-in pressures, whether shut-in pressure reached static level, hydrostatic pressures, bottom hole temperature, fluid recovery, and flow rates if gas to surface test, along with final chart(s). Attach extra sheet if more space is needed. Attach complete copy of all Electric Wire-line Logs surveyed. Attach final geological well site report.

Drill Stem Tests Taken <input type="checkbox"/> Yes <input type="checkbox"/> No <i>(Attach Additional Sheets)</i> Samples Sent to Geological Survey <input type="checkbox"/> Yes <input type="checkbox"/> No Cores Taken <input type="checkbox"/> Yes <input type="checkbox"/> No Electric Log Run <input type="checkbox"/> Yes <input type="checkbox"/> No Electric Log Submitted Electronically <input type="checkbox"/> Yes <input type="checkbox"/> No <i>(If no, Submit Copy)</i> List All E. Logs Run:	<input type="checkbox"/> Log Formation (Top), Depth and Datum <input type="checkbox"/> Sample Name Top Datum
---	---

CASING RECORD <input type="checkbox"/> New <input type="checkbox"/> Used							
Report all strings set-conductor, surface, intermediate, production, etc.							
Purpose of String	Size Hole Drilled	Size Casing Set (In O.D.)	Weight Lbs. / Ft.	Setting Depth	Type of Cement	# Sacks Used	Type and Percent Additives

ADDITIONAL CEMENTING / SQUEEZE RECORD				
Purpose:	Depth Top Bottom	Type of Cement	# Sacks Used	Type and Percent Additives
_____ Perforate _____ Protect Casing _____ Plug Back TD _____ Plug Off Zone				

Shots Per Foot	PERFORATION RECORD - Bridge Plugs Set/Type Specify Footage of Each Interval Perforated	Acid, Fracture, Shot, Cement Squeeze Record <i>(Amount and Kind of Material Used)</i>	Depth

TUBING RECORD: Size: _____ Set At: _____ Packer At: _____ Liner Run: Yes No

Date of First, Resumed Production, SWD or ENHR. _____ Producing Method: Flowing Pumping Gas Lift Other *(Explain)* _____

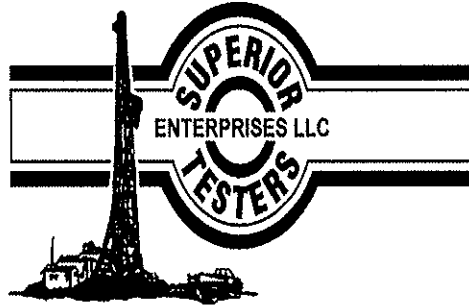
Estimated Production Per 24 Hours	Oil Bbls.	Gas Mcf	Water Bbls.	Gas-Oil Ratio	Gravity
-----------------------------------	-----------	---------	-------------	---------------	---------

DISPOSITION OF GAS: <input type="checkbox"/> Vented <input type="checkbox"/> Sold <input type="checkbox"/> Used on Lease <i>(If vented, Submit ACO-18.)</i>	METHOD OF COMPLETION: <input type="checkbox"/> Open Hole <input type="checkbox"/> Perf. <input type="checkbox"/> Dually Comp. <input type="checkbox"/> Commingled <i>(Submit ACO-5)</i> <input type="checkbox"/> Other <i>(Specify)</i> _____ <input type="checkbox"/> Other <i>(Specify)</i> _____	PRODUCTION INTERVAL: _____ _____
---	--	--

Form	ACO1 - Well Completion
Operator	K & N Petroleum, Inc.
Well Name	Wess 6
Doc ID	1123118

Perforations

Shots Per Foot	Perforation Record	Material Record	Depth
4	3140-46	2% gel	
4	3160-64	2% gel	
4	3184-86	2% gel	
4	3206-12	2% gel	
4	3332-36	2% gel	
4	3362-66	2% gel	
	3385	CIBP	
	3422-26	2% gel	



DRILL STEM TEST REPORT

Prepared For: **K&N Petroleum**

1105 Walnut Great Bend
Kansas 67530

ATTN: Jim Musgrove

Wess #6

9-19s-12w-Barton

Start Date: 2012.12.09 @ 04:27:00

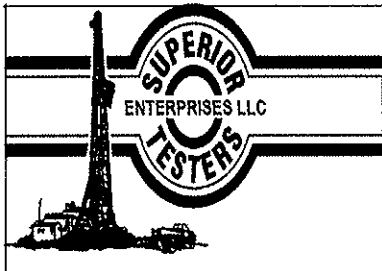
End Date: 2012.12.09 @ 10:09:30

Job Ticket #: 17709 DST #: 1

Superior Testers Enterprises LLC
PO Box 138 Great Bend KS 67530
1-800-792-6902

Printed: 2012.12.09 @ 22:24:33

K&N Petroleum 9-19s-12w-Barton Wess #6 DST # 1 Lansing A-B 2012.12.09



DRILL STEM TEST REPORT

K&N Petroleum
 1105 Walnut Great Bend
 Kansas 67530
 ATTN: Jim Musgrove

9-19s-12w-Barton
Wess #6
 Job Ticket: 17709 DST#: 1
 Test Start: 2012.12.09 @ 04:27:00

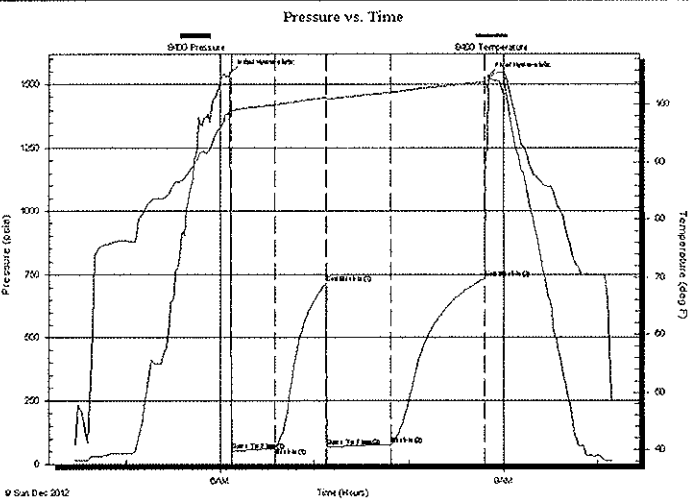
GENERAL INFORMATION:

Formation: **Lansing A-B**
 Deviated: No Whipstock: ft (KB)
 Test Type: Conventional Bottom Hole (Initial)
 Time Tool Opened: 06:07:30 Tester: Dustin Ellis
 Time Test Ended: 10:09:30 Unit No: 3315-Great Bend-25
 Interval: **3123.00 ft (KB) To 3174.00 ft (KB) (TVD)** Reference Elevations: 1839.00 ft (KB)
 Total Depth: 3174.00 ft (KB) (TVD) 1832.00 ft (CF)
 Hole Diameter: 7.88 inches Hole Condition: Fair KB to GR/CF: 7.00 ft

Serial #: 8400

Press@RunDepth: 77.56 psia @ ft (KB) Capacity: 5000.00 psia
 Start Date: 2012.12.09 End Date: 2012.12.09 Last Calib.: 2012.12.09
 Start Time: 04:27:00 End Time: 10:09:30 Time On Btm: 2012.12.09 @ 06:06:30
 Time Off Btm: 2012.12.09 @ 08:50:30

TEST COMMENT: 1st Open 30 Fair building blow built to bottom bucket 22 minutes
 1st Shut in 30 minutes No blow back
 2nd Open 45 minutes Fair building blow blew bottom bucket 29 minutes.
 2nd Shut in 60 minutes No blow back



PRESSURE SUMMARY

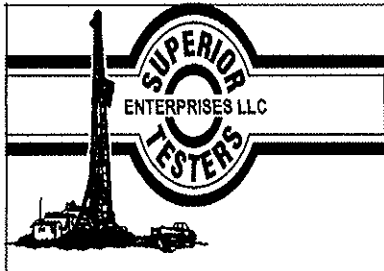
Time (Min.)	Pressure (psia)	Temp (deg F)	Annotation
0	1543.07	99.07	Initial Hydro-static
1	51.47	99.00	Open To Flow (1)
29	62.53	100.00	Shut-In(1)
62	715.28	101.27	End Shut-In(1)
62	67.37	101.01	Open To Flow (2)
103	77.56	102.18	Shut-In(2)
162	732.83	103.99	End Shut-In(2)
164	1530.82	104.22	Final Hydro-static

Recovery

Length (ft)	Description	Volume (bbl)
72.00	Slightly oil spotted mud Mud 100%	1.01

Gas Rates

Choke (inches)	Pressure (psia)	Gas Rate (Mcf/d)



DRILL STEM TEST REPORT

TOOL DIAGRAM

K&N Petroleum
 1105 Walnut Great Bend
 Kansas 67530
 ATTN: Jim Musgrove

9-19s-12w-Barton
Wess #6
 Job Ticket: 17709 DST#: 1
 Test Start: 2012.12.09 @ 04:27:00

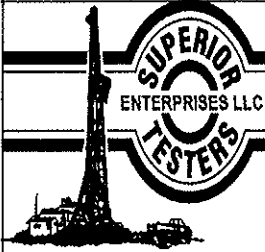
Tool Information

Drill Pipe:	Length: 3123.00 ft	Diameter: 3.80 inches	Volume: 43.81 bbl	Tool Weight: 2000.00 lb
Heavy Wt. Pipe:	Length: 0.00 ft	Diameter: 0.00 inches	Volume: 0.00 bbl	Weight set on Packer: 20000.00 lb
Drill Collar:	Length: 0.00 ft	Diameter: 0.00 inches	Volume: 0.00 bbl	Weight to Pull Loose: 60000.00 lb
			<u>Total Volume: 43.81 bbl</u>	Tool Chased 0.00 ft
Drill Pipe Above KB:	20.00 ft			String Weight: Initial 25000.00 lb
Depth to Top Packer:	3123.00 ft			Final 26000.00 lb
Depth to Bottom Packer:	ft			
Interval between Packers:	51.00 ft			
Tool Length:	71.00 ft			
Number of Packers:	2	Diameter: 6.75 inches		

Tool Comments:

Tool Description	Length (ft)	Serial No.	Position	Depth (ft)	Accum. Lengths
Shut-In Tool	5.00			3108.00	
Hydraulic Tool	5.00			3113.00	
Packer	5.00			3118.00	20.00 Bottom Of Top Packer
Packer	5.00			3123.00	
Anchor	46.00			3169.00	
Recorder	1.00	6663	inside	3170.00	
Recorder	1.00	8400	Outside	3171.00	
Bullnose	3.00			3174.00	51.00 Bottom Packers & Anchor

Total Tool Length: 71.00



DRILL STEM TEST REPORT

FLUID SUMMARY

K&N Petroleum

9-19s-12w-Barton

1105 Walnut Great Bend
Kansas 67530

Wess #6

Job Ticket: 17709

DST#: 1

ATTN: Jim Musgrove

Test Start: 2012.12.09 @ 04:27:00

Mud and Cushion Information

Mud Type: Gel Chem	Cushion Type:	Oil API:	deg API
Mud Weight: 9.00 lb/gal	Cushion Length: ft	Water Salinity:	ppm
Viscosity: 50.00 sec/qt	Cushion Volume: bbl		
Water Loss: 7.20 in ³	Gas Cushion Type:		
Resistivity: ohm.m	Gas Cushion Pressure: psia		
Salinity: 6200.00 ppm			
Filter Cake: 1.00 inches			

Recovery Information

Recovery Table

Length ft	Description	Volume bbl
72.00	Slightly oil spotted mud Mud 100%	1.010

Total Length: 72.00 ft Total Volume: 1.010 bbl

Num Fluid Samples: 0

Num Gas Bombs: 0

Serial #:

Laboratory Name:

Laboratory Location:

Recovery Comments:

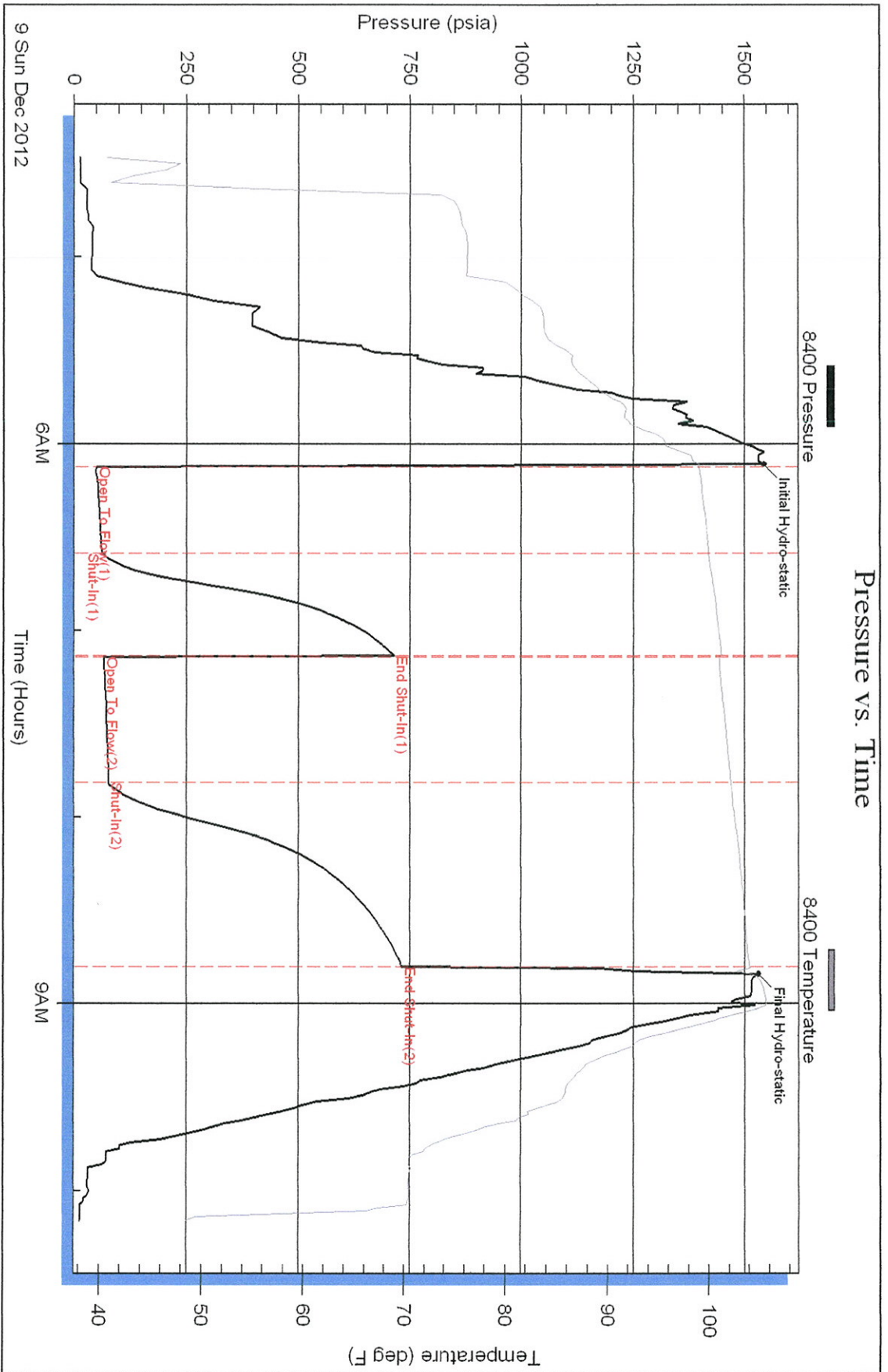
Serial #: 8400

K&N Petroleum

Wess #6

DST Test Number: 1

Pressure vs. Time



Superior Testers Enterprises LLC

Ref. No: 17709

Printed: 2012.12.09 @ 22:24:33

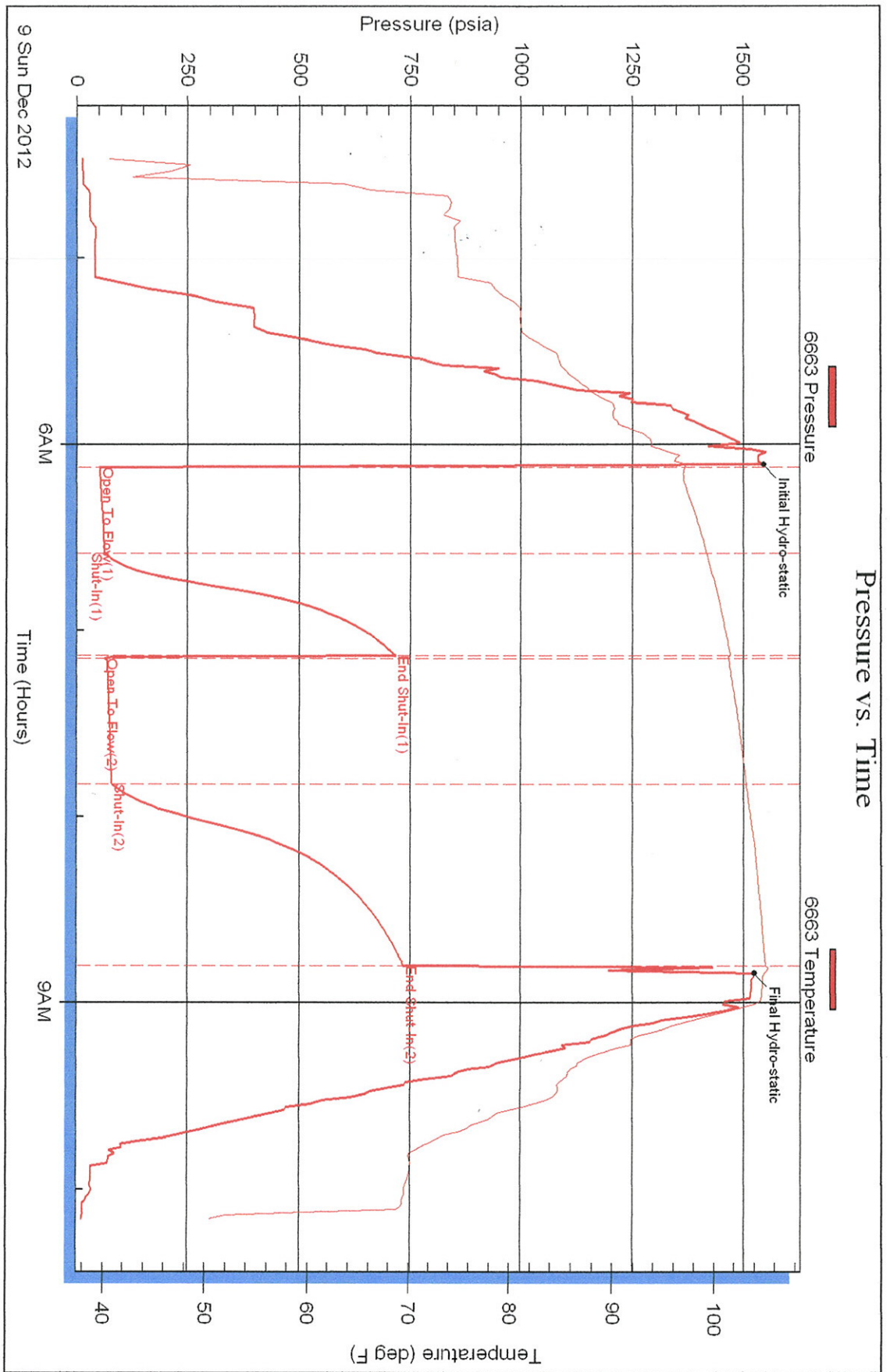
Serial #: 6663

K&N Petroleum

Wess #6

DST Test Number: 1

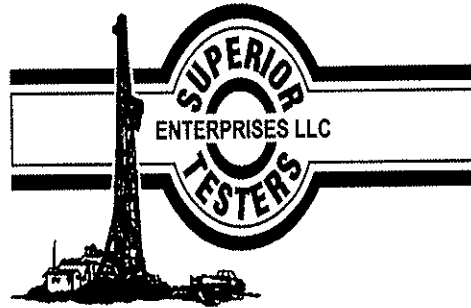
Pressure vs. Time



Superior Testers Enterprises LLC

Ref. No: 17709

Printed: 2012.12.09 @ 22:24:34



DRILL STEM TEST REPORT

Prepared For: **K&N Petroleum**
1105 Walnut Great Bend
Kansas 67530

ATTN: Jim Musgrove

Wess #6

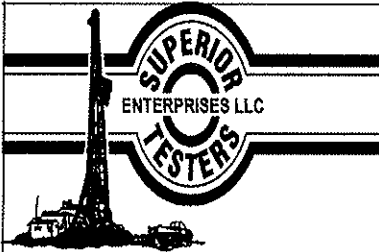
9-19s-12w-Barton

Start Date: 2012.12.10 @ 07:53:00
End Date: 2012.12.10 @ 12:54:00
Job Ticket #: 17710 DST #: 2

Superior Testers Enterprises LLC
PO Box 138 Great Bend KS 67530
1-800-792-6902

Printed: 2012.12.10 @ 13:05:24

K&N Petroleum
9-19s-12w-Barton
Wess #6
DST # 2
Lancing
2012.12.10



DRILL STEM TEST REPORT

TOOL DIAGRAM

K&N Petroleum
 1105 Walnut Great Bend
 Kansas 67530
 ATTN: Jim Musgrove

9-19s-12w-Barton
Wess #6
 Job Ticket: 17710 DST#: 2
 Test Start: 2012.12.10 @ 07:53:00

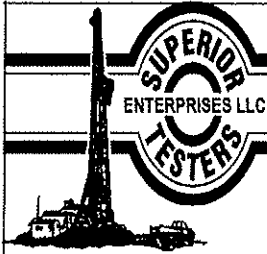
Tool Information

Drill Pipe:	Length: 3186.00 ft	Diameter: 3.80 inches	Volume: 44.69 bbl	Tool Weight: 2000.00 lb
Heavy Wt. Pipe:	Length: 0.00 ft	Diameter: 0.00 inches	Volume: 0.00 bbl	Weight set on Packer: 20000.00 lb
Drill Collar:	Length: 0.00 ft	Diameter: 0.00 inches	Volume: 0.00 bbl	Weight to Pull Loose: 40000.00 lb
			<u>Total Volume: 44.69 bbl</u>	Tool Chased 0.00 ft
Drill Pipe Above KB:	32.00 ft			String Weight: Initial 37000.00 lb
Depth to Top Packer:	3174.00 ft			Final 37000.00 lb
Depth to Bottom Packer:	ft			
Interval between Packers:	38.00 ft			
Tool Length:	58.00 ft			
Number of Packers:	2	Diameter: 6.75 inches		

Tool Comments:

Tool Description	Length (ft)	Serial No.	Position	Depth (ft)	Accum. Lengths
Shut-In Tool	5.00			3159.00	
Hydrolic Tool	5.00			3164.00	
Packer	5.00			3169.00	20.00 Bottom Of Top Packer
Packer	5.00			3174.00	
Anchor	33.00			3207.00	
Recorder	1.00	6663	Inside	3208.00	
Recorder	1.00	8400	Outside	3209.00	
Bullnose	3.00			3212.00	38.00 Bottom Packers & Anchor

Total Tool Length: 58.00



DRILL STEM TEST REPORT

FLUID SUMMARY

K&N Petroleum
 1105 Walnut Great Bend
 Kansas 67530
 ATTN: Jim Musgrove

9-19s-12w-Barton
Wess #6
 Job Ticket: 17710 DST#: 2
 Test Start: 2012.12.10 @ 07:53:00

Mud and Cushion Information

Mud Type: Gel Chem	Cushion Type:	Oil API:	deg API
Mud Weight: 9.00 lb/gal	Cushion Length: ft	Water Salinity:	ppm
Viscosity: 50.00 sec/qt	Cushion Volume: bbl		
Water Loss: 7.20 in ³	Gas Cushion Type:		
Resistivity: ohm.m	Gas Cushion Pressure: psia		
Salinity: 6200.00 ppm			
Filter Cake: 1.00 inches			

Recovery Information

Recovery Table

Length ft	Description	Volume bbl
12.00	Oil spotted mud 1% Oil 99%Mud	0.168

Total Length: 12.00 ft Total Volume: 0.168 bbl
 Num Fluid Samples: 0 Num Gas Bombs: 0 Serial #:
 Laboratory Name: Laboratory Location:
 Recovery Comments:

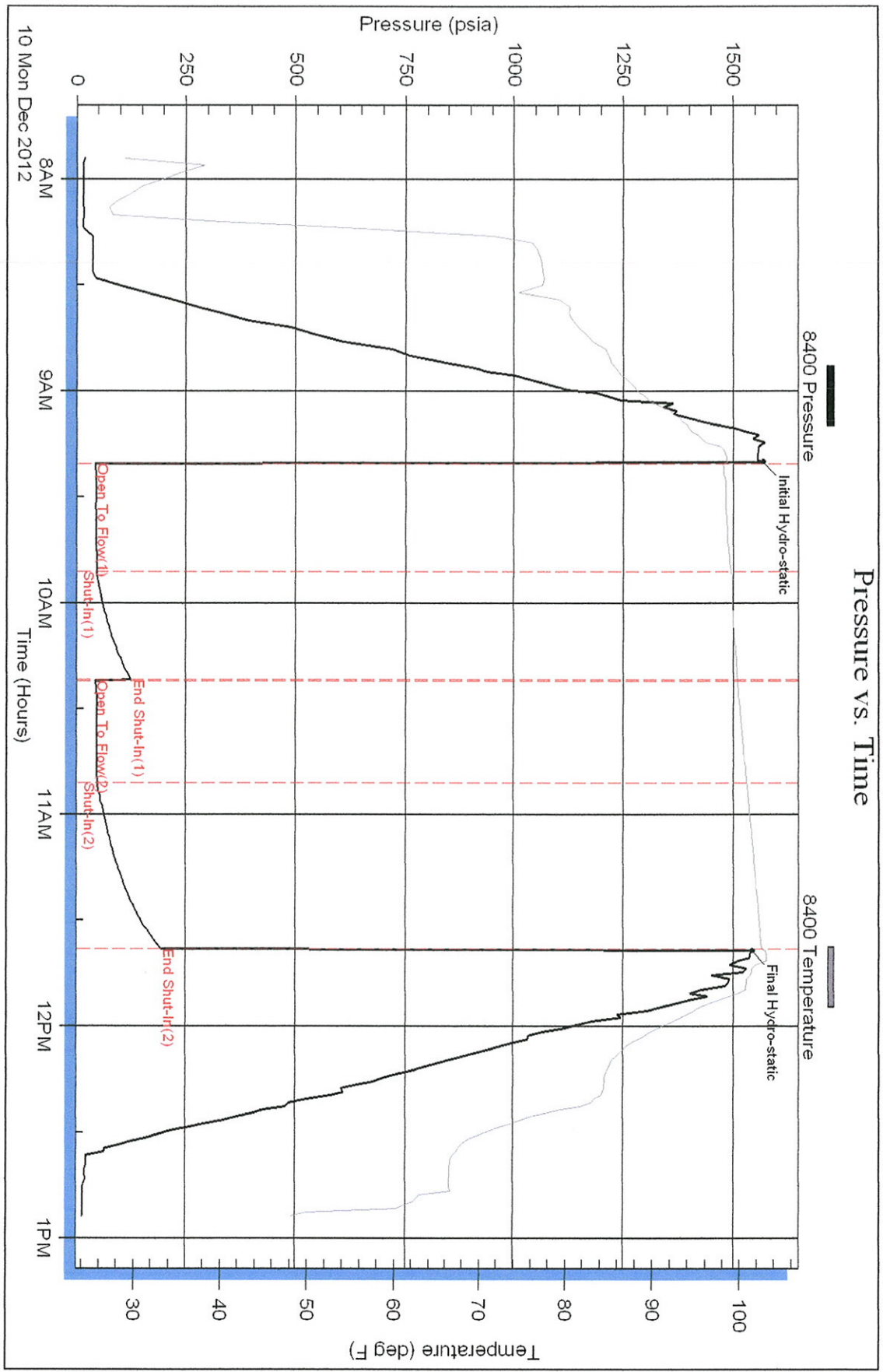
Serial #: 8400

Outside K&N Petroleum

Wess #6

DST Test Number: 2

Pressure vs. Time



Superior Testers Enterprises LLC

Ref. No: 17710

Printed: 2012.12.10 @ 13:05:25

Serial #: 6663

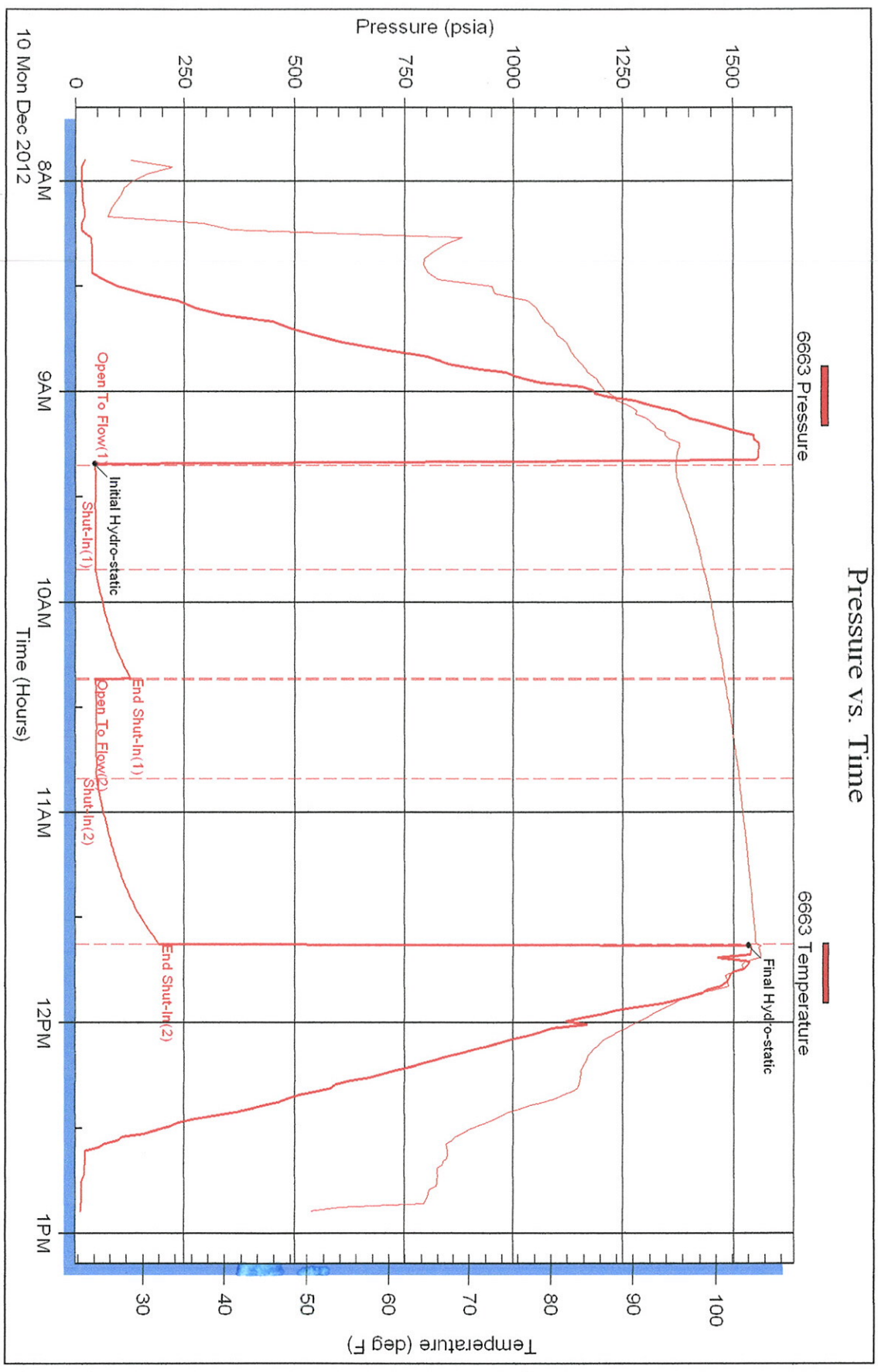
Inside

K&N Petroleum

Wess #6

DST Test Number: 2

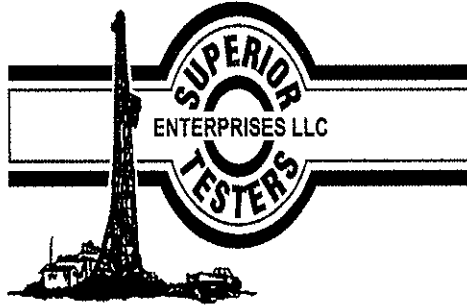
Pressure vs. Time



Superior Testers Enterprises LLC

Ref. No: 17710

Printed: 2012.12.10 @ 13:05:26



DRILL STEM TEST REPORT

Prepared For: **K&N Petroleum**

1105 Walnut Great Bend
Kansas 67530

ATTN: Jim Musgrove

Wess #6

9-19s-12w-Barton

Start Date: 2012.12.11 @ 12:11:00

End Date: 2012.12.11 @ 17:44:30

Job Ticket #: 17711 DST #: 3

Superior Testers Enterprises LLC
PO Box 138 Great Bend KS 67530
1-800-792-6902

Printed: 2012.12.11 @ 06:06:27

K&N Petroleum

9-19s-12w-Barton

Wess #6

DST # 3

Lansing H-1-J

2012.12.11



DRILL STEM TEST REPORT

K&N Petroleum
 1105 Walnut Great Bend
 Kansas 67530
 ATTN: Jim Musgrove

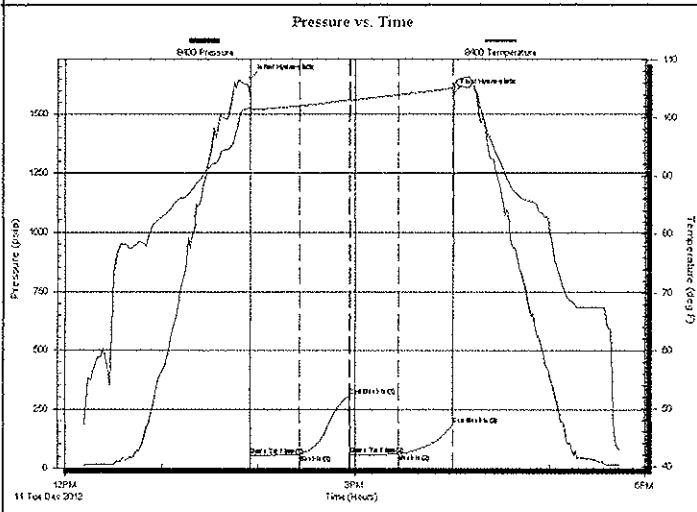
9-19s-12w-Barton
Wess #6
 Job Ticket: 17711 DST#: 3
 Test Start: 2012.12.11 @ 12:11:00

GENERAL INFORMATION:

Formation: **Lansing H-I-J**
 Deviated: No Whipstock: ft (KB)
 Test Type: Conventional Bottom Hole (Initial)
 Time Tool Opened: 13:55:30 Tester: Dustin Ellis
 Time Test Ended: 17:44:30 Unit No: 3315-Great Bend-25
 Interval: **3266.00 ft (KB) To 3320.00 ft (KB) (TVD)** Reference Elevations: 1839.00 ft (KB)
 Total Depth: 3320.00 ft (KB) (TVD) 1832.00 ft (CF)
 Hole Diameter: 7.88 inches Hole Condition: Fair KB to GR/CF: 7.00 ft

Serial #: 8400 Outside
 Press@RunDepth: 58.72 psia @ 3317.77 ft (KB) Capacity: 5000.00 psia
 Start Date: 2012.12.11 End Date: 2012.12.11 Last Calib.: 2012.12.11
 Start Time: 12:11:00 End Time: 17:44:30 Time On Btm: 2012.12.11 @ 13:55:00
 Time Off Btm: 2012.12.11 @ 16:00:30

TEST COMMENT: 1st Open 30 minutes Weak surface blow
 1st Shut in 30 minutes No blow
 2nd Open 30 minutes Weak surface blow
 2nd Shut in 30 minutes No blow back



PRESSURE SUMMARY

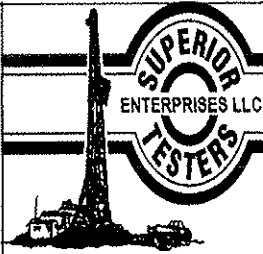
Time (Min.)	Pressure (psia)	Temp (deg F)	Annotation
0	1654.58	101.75	Initial Hydro-static
1	51.09	101.30	Open To Flow (1)
31	55.81	102.07	Shut-In(1)
62	306.59	103.14	End Shut-In(1)
62	57.86	103.03	Open To Flow (2)
92	58.72	104.00	Shut-In(2)
125	185.00	105.16	End Shut-In(2)
126	1589.95	105.86	Final Hydro-static

Recovery

Length (ft)	Description	Volume (bbl)
11.00	Mud 100%	0.15

Gas Rates

Choke (inches)	Pressure (psia)	Gas Rate (Mcf/d)



DRILL STEM TEST REPORT

K&N Petroleum
 1105 Walnut Great Bend
 Kansas 67530
 ATTN: Jim Musgrove

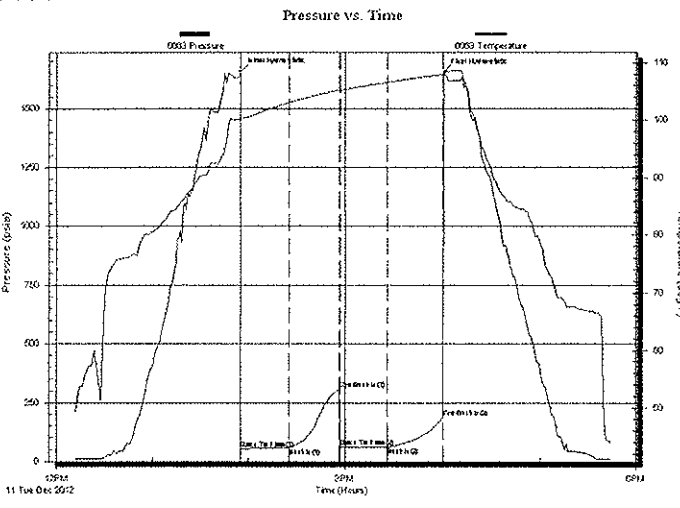
9-19s-12w-Barton
Wess #6
 Job Ticket: 17711 DST#: 3
 Test Start: 2012.12.11 @ 12:11:00

GENERAL INFORMATION:

Formation: **Lansing H-I-J**
 Deviated: **No** Whipstock: ft (KB)
 Test Type: **Conventional Bottom Hole (Initial)**
 Time Tool Opened: **13:55:30**
 Tester: **Dustin Ellis**
 Time Test Ended: **17:44:30**
 Unit No: **3315-Great Bend-25**
 Interval: **3266.00 ft (KB) To 3320.00 ft (KB) (TVD)**
 Reference Elevations: **1839.00 ft (KB)**
 Total Depth: **3320.00 ft (KB) (TVD)**
1832.00 ft (CF)
 Hole Diameter: **7.88 inches** Hole Condition: **Fair**
 KB to GR/CF: **7.00 ft**

Serial #: 6663 **Inside**
 Press@RunDepth: **187.56 psia @ 3316.77 ft (KB)** Capacity: **5000.00 psia**
 Start Date: **2012.12.11** End Date: **2012.12.11** Last Calib.: **2012.12.11**
 Start Time: **12:11:00** End Time: **17:44:30** Time On Btm: **2012.12.11 @ 13:55:00**
 Time Off Btm: **2012.12.11 @ 16:00:30**

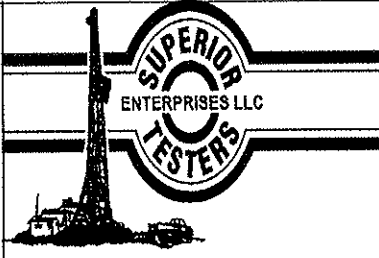
TEST COMMENT: 1st Open 30 minutes Weak surface blow
 1st Shut in 30 minutes No blow
 2nd Open 30 minutes Weak surface blow
 2nd Shut in 30 minutes No blow back



PRESSURE SUMMARY			
Time (Min.)	Pressure (psia)	Temp (deg F)	Annotation
0	1657.94	100.64	Initial Hydro-static
1	52.54	100.45	Open To Flow (1)
30	56.98	103.03	Shut-In(1)
62	308.64	105.30	End Shut-In(1)
62	59.00	105.25	Open To Flow (2)
91	59.97	106.63	Shut-In(2)
125	187.56	107.91	End Shut-In(2)
126	1654.33	108.28	Final Hydro-static

Recovery		
Length (ft)	Description	Volume (bbl)
11.00	Mud 100%	0.15

Gas Rates			
	Choke (inches)	Pressure (psia)	Gas Rate (Mcf/d)



DRILL STEM TEST REPORT

TOOL DIAGRAM

K&N Petroleum
 1105 Walnut Great Bend
 Kansas 67530
 ATTN: Jim Musgrove

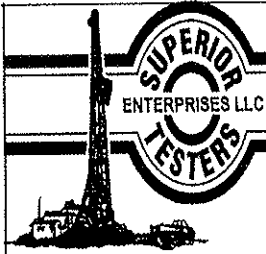
9-19s-12w-Barton
Wess #6
 Job Ticket: 17711 DST#: 3
 Test Start: 2012.12.11 @ 12:11:00

Tool Information

Drill Pipe:	Length: 3273.00 ft	Diameter: 3.80 inches	Volume: 45.91 bbl	Tool Weight: 2000.00 lb
Heavy Wt. Pipe:	Length: 0.00 ft	Diameter: 0.00 inches	Volume: 0.00 bbl	Weight set on Packer: 20000.00 lb
Drill Collar:	Length: 0.00 ft	Diameter: 0.00 inches	Volume: 0.00 bbl	Weight to Pull Loose: 40000.00 lb
			<u>Total Volume: 45.91 bbl</u>	Tool Chased 0.00 ft
Drill Pipe Above KB:	27.00 ft			String Weight: Initial 37000.00 lb
Depth to Top Packer:	3266.00 ft			Final 37000.00 lb
Depth to Bottom Packer:	ft			
Interval between Packers:	54.77 ft			
Tool Length:	74.77 ft			
Number of Packers:	2	Diameter: 6.75 inches		
Tool Comments:				

Tool Description	Length (ft)	Serial No.	Position	Depth (ft)	Accum. Lengths
Shut-In Tool	5.00			3251.00	
Hydrolic Tool	5.00			3256.00	
Packer	5.00			3261.00	20.00 Bottom Of Top Packer
Packer	5.00			3266.00	
Anchor	10.00			3276.00	
Change Over Sub	0.75			3276.75	
Drill Pipe	31.27			3308.02	
Change Over Sub	0.75			3308.77	
Anchor	7.00			3315.77	
Recorder	1.00	6663	Inside	3316.77	
Recorder	1.00	8400	Outside	3317.77	
Bullnose	3.00			3320.77	54.77 Bottom Packers & Anchor

Total Tool Length: 74.77



DRILL STEM TEST REPORT

FLUID SUMMARY

K&N Petroleum
 1105 Walnut Great Bend
 Kansas 67530
 ATTN: Jim Musgrove

9-19s-12w-Barton
Wess #6
 Job Ticket: 17711 DST#: 3
 Test Start: 2012.12.11 @ 12:11:00

Mud and Cushion Information

Mud Type: Gel Chem	Cushion Type:	Oil API:	deg API
Mud Weight: 9.00 lb/gal	Cushion Length: ft	Water Salinity:	ppm
Viscosity: 45.00 sec/qt	Cushion Volume: bbl		
Water Loss: 8.00 in ³	Gas Cushion Type:		
Resistivity: ohm.m	Gas Cushion Pressure: psia		
Salinity: 5700.00 ppm			
Filter Cake: 1.00 inches			

Recovery Information

Recovery Table

Length ft	Description	Volume bbl
11.00	Mud 100%	0.154

Total Length: 11.00 ft Total Volume: 0.154 bbl
 Num Fluid Samples: 0 Num Gas Bombs: 0 Serial #:
 Laboratory Name: Laboratory Location:
 Recovery Comments:

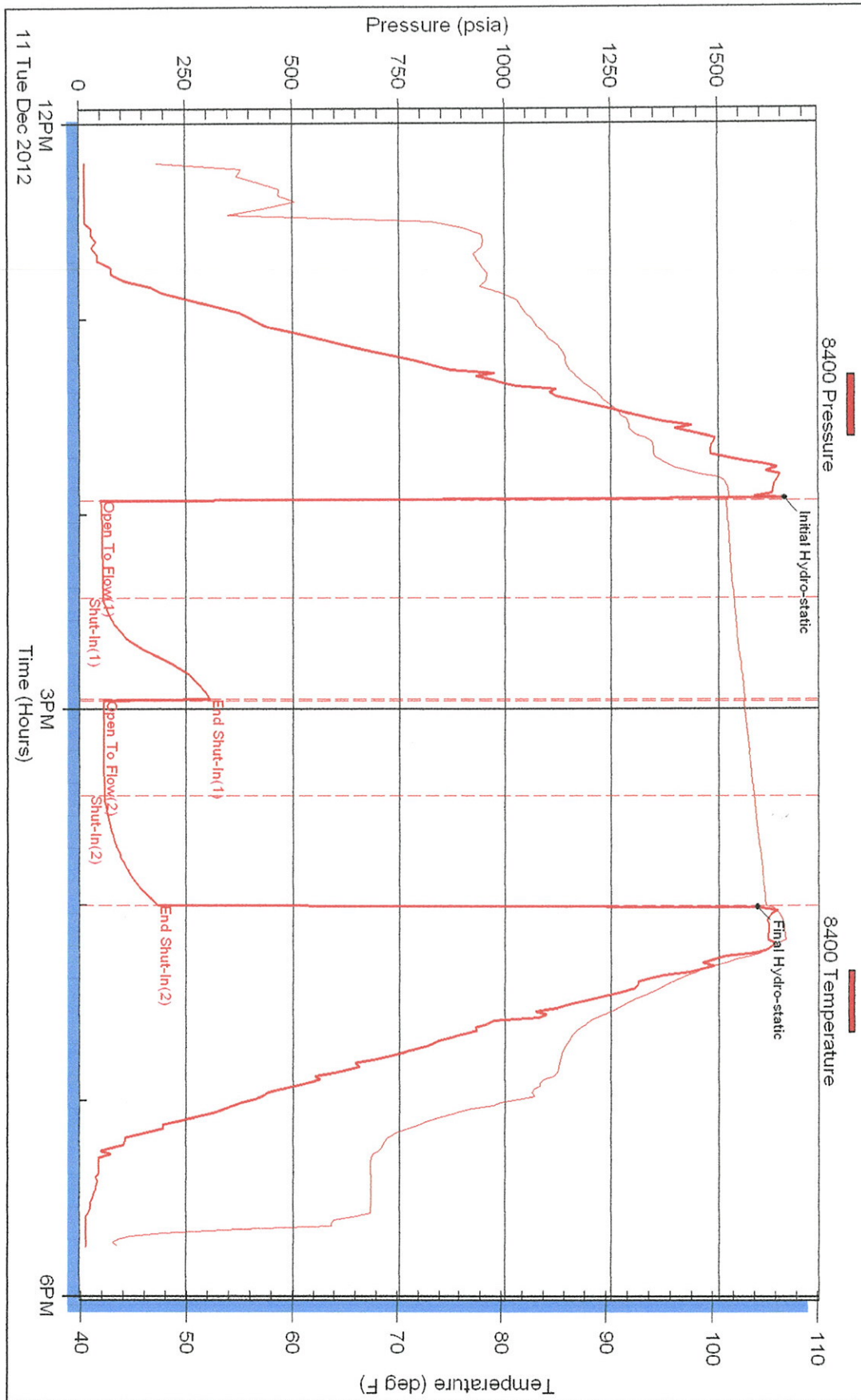
Serial #: 8400

Outside K&N Petroleum

Wess #6

DST Test Number: 3

Pressure vs. Time



Superior Testers Enterprises LLC

Ref. No: 17711

Printed: 2012.12.11 @ 06:06:28

Serial #: 6663

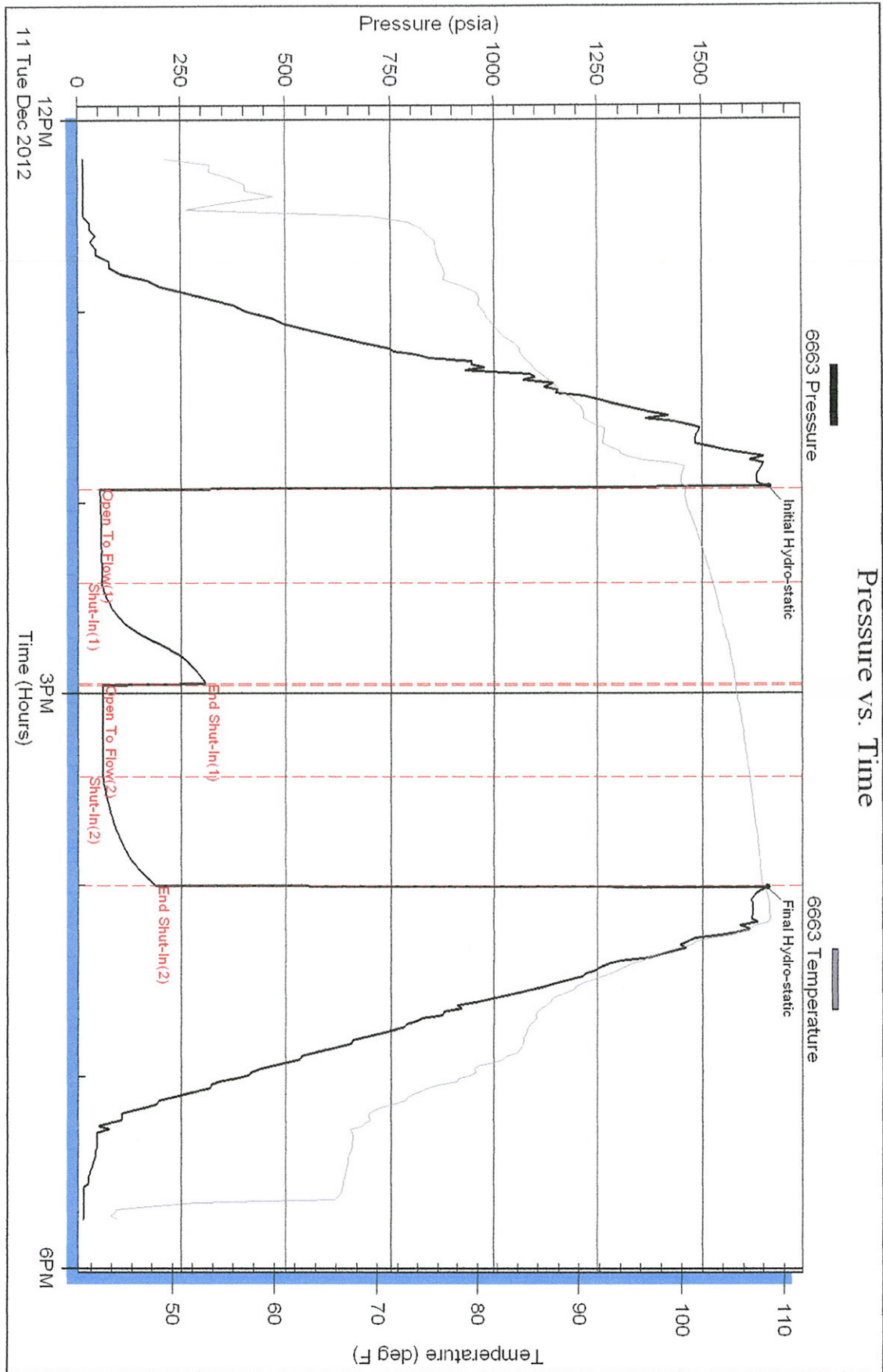
Inside

K&N Petroleum

Well #6

DST Test Number: 3

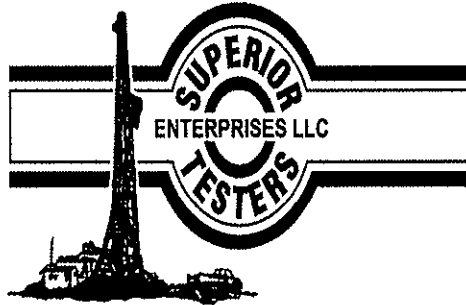
Pressure vs. Time



Superior Testers Enterprises LLC

Ref. No: 17711

Printed: 2012.12.11 @ 06:06:28



DRILL STEM TEST REPORT

Prepared For: **K&N Petroleum**

1105 Walnut Great Bend
Kansas 67530

ATTN: Jim Musgrove

Wess #6

9-19s-12w-Barton

Start Date: 2012.12.11 @ 04:00:00

End Date: 2012.12.11 @ 08:59:00

Job Ticket #: 17712 DST #: 4

Superior Testers Enterprises LLC
PO Box 138 Great Bend KS 67530
1-800-792-6902

Printed: 2012.12.11 @ 21:15:36

K&N Petroleum

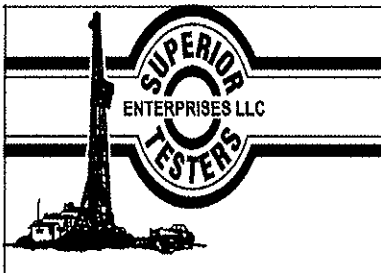
9-19s-12w-Barton

Wess #6

DST # 4

Lansing K-L

2012.12.11



DRILL STEM TEST REPORT

K&N Petroleum
 1105 Walnut Great Bend
 Kansas 67530
 ATTN: Jim Musgrove

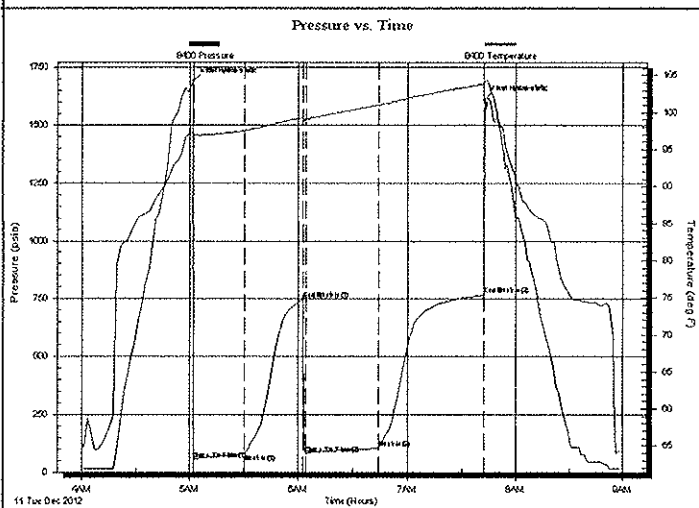
9-19s-12w-Barton
Wess #6
 Job Ticket: 17712 DST#: 4
 Test Start: 2012.12.11 @ 04:00:00

GENERAL INFORMATION:

Formation: **Lansing K-L**
 Deviated: No Whipstock: ft (KB)
 Test Type: Conventional Bottom Hole (Initial)
 Time Tool Opened: 05:02:00 Tester: Dustin Ellis
 Time Test Ended: 08:59:00 Unit No: 3315-Great Bend-25
 Interval: **3324.00 ft (KB) To 3381.00 ft (KB) (TVD)** Reference Elevations: 1839.00 ft (KB)
 Total Depth: 3381.00 ft (KB) (TVD) 1832.00 ft (CF)
 Hole Diameter: 7.88 inches Hole Condition: Fair KB to GR/CF: 7.00 ft

Serial #: 8400 **Outside**
 Press@RunDepth: 767.37 psia @ 3378.77 ft (KB) Capacity: 5000.00 psia
 Start Date: 2012.12.11 End Date: 2012.12.11 Last Calib.: 2012.12.11
 Start Time: 04:00:00 End Time: 08:59:00 Time On Btm: 2012.12.11 @ 05:01:30
 Time Off Btm: 2012.12.11 @ 07:42:30

TEST COMMENT: 1st Open 30 minutes Fair building blow blew bottom bucket 12 minutes.
 1st Shut in 30 minutes No blow back
 2nd Open 45 minutes Fair building blow blew bottom bucket 8 minutes.
 2nd Shut in 60 minutes Yes blow back



PRESSURE SUMMARY

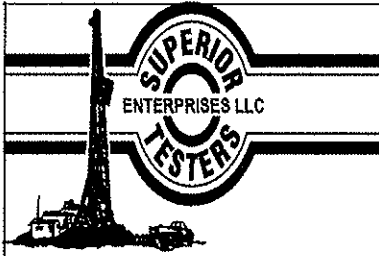
Time (Min.)	Pressure (psia)	Temp (deg F)	Annotation
0	1689.40	97.40	Initial Hydro-static
1	54.83	96.94	Open To Flow (1)
29	77.49	97.52	Shut-In(1)
62	748.19	99.32	End Shut-In(1)
63	80.22	99.14	Open To Flow (2)
103	103.21	101.02	Shut-In(2)
161	767.37	103.80	End Shut-In(2)
161	1610.40	104.30	Final Hydro-static

Recovery

Length (ft)	Description	Volume (bbl)
15.00	Clean oil 100%	0.21
117.00	Oil cut mud 35% Oil 65% Mud	1.64
0.00	Gravity oil 44 corrected	0.00

Gas Rates

Choke (inches)	Pressure (psia)	Gas Rate (Mcf/d)



DRILL STEM TEST REPORT

K&N Petroleum
 1105 Walnut Great Bend
 Kansas 67530
 ATTN: Jim Musgrove

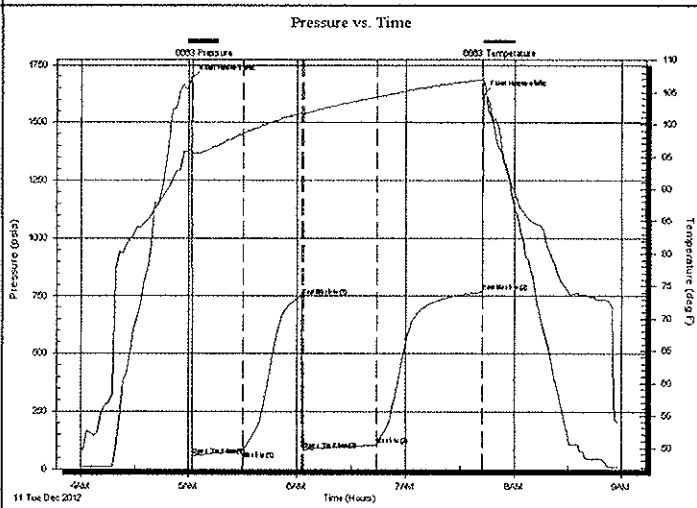
9-19s-12w-Barton
Wess #6
 Job Ticket: 17712 **DST#: 4**
 Test Start: 2012.12.11 @ 04:00:00

GENERAL INFORMATION:

Formation: **Lansing K-L**
 Deviated: No Whipstock: ft (KB)
 Test Type: Conventional Bottom Hole (Initial)
 Time Tool Opened: 05:02:00 Tester: Dustin Ellis
 Time Test Ended: 08:59:00 Unit No: 3315-Great Bend-25
 Interval: **3324.00 ft (KB) To 3381.00 ft (KB) (TVD)** Reference Elevations: 1839.00 ft (KB)
 Total Depth: 3381.00 ft (KB) (TVD) 1832.00 ft (CF)
 Hole Diameter: 7.88 inches Hole Condition: Fair KB to GR/CF: 7.00 ft

Serial #: 6663 Inside
 Press@RunDepth: 104.79 psia @ 3377.77 ft (KB) Capacity: 5000.00 psia
 Start Date: 2012.12.11 End Date: 2012.12.11 Last Calib.: 2012.12.11
 Start Time: 04:00:00 End Time: 08:59:00 Time On Btm: 2012.12.11 @ 05:01:30
 Time Off Btm: 2012.12.11 @ 07:42:30

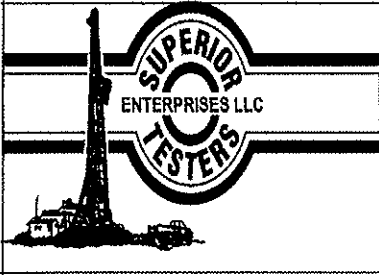
TEST COMMENT: 1st Open 30 minutes Fair building blow blew bottom bucket 12 minutes.
 1st Shut in 30 minutes No blow back
 2nd Open 45 minutes Fair building blow blew bottom bucket 8 minutes.
 2nd Shut in 60 minutes Yes blow back



PRESSURE SUMMARY			
Time (Min.)	Pressure (psia)	Temp (deg F)	Annotation
0	1690.87	96.22	Initial Hydro-static
1	56.27	95.69	Open To Flow (1)
29	78.72	98.51	Shut-in(1)
62	750.01	101.85	End Shut-in(1)
63	81.58	101.73	Open To Flow (2)
103	104.79	104.29	Shut-in(2)
161	769.22	106.96	End Shut-in(2)
161	1623.55	107.24	Final Hydro-static

Recovery		
Length (ft)	Description	Volume (bbl)
15.00	Clean oil 100%	0.21
117.00	Oil cut mud 35%Oil 65%Mud	1.64
0.00	Gravity oil 44 corrected	0.00

Gas Rates			
	Choke (inches)	Pressure (psia)	Gas Rate (Mcf/d)



DRILL STEM TEST REPORT

TOOL DIAGRAM

K&N Petroleum
 1105 Walnut Great Bend
 Kansas 67530
 ATTN: Jim Musgrove

9-19s-12w-Barton
Wess #6
 Job Ticket: 17712 DST#: 4
 Test Start: 2012.12.11 @ 04:00:00

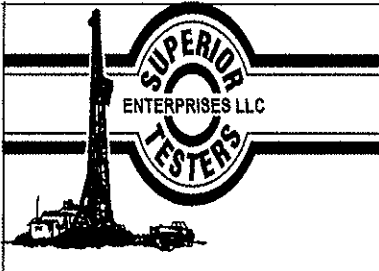
Tool Information

Drill Pipe:	Length: 3310.00 ft	Diameter: 3.80 inches	Volume: 46.43 bbl	Tool Weight: 2000.00 lb
Heavy Wt. Pipe:	Length: 0.00 ft	Diameter: 0.00 inches	Volume: 0.00 bbl	Weight set on Packer: 20000.00 lb
Drill Collar:	Length: 0.00 ft	Diameter: 0.00 inches	Volume: 0.00 bbl	Weight to Pull Loose: 42000.00 lb
			<u>Total Volume: 46.43 bbl</u>	Tool Chased 0.00 ft
Drill Pipe Above KB:	6.00 ft			String Weight: Initial 32000.00 lb
Depth to Top Packer:	3324.00 ft			Final 34000.00 lb
Depth to Bottom Packer:	ft			
Interval between Packers:	57.77 ft			
Tool Length:	77.77 ft			
Number of Packers:	2	Diameter: 6.75 inches		

Tool Comments:

Tool Description	Length (ft)	Serial No.	Position	Depth (ft)	Accum. Lengths
Shut-In Tool	5.00			3309.00	
Hydrolic Tool	5.00			3314.00	
Packer	5.00			3319.00	20.00 Bottom Of Top Packer
Packer	5.00			3324.00	
Anchor	10.00			3334.00	
Change Over Sub	0.75			3334.75	
Drill Pipe	31.27			3366.02	
Change Over Sub	0.75			3366.77	
Anchor	10.00			3376.77	
Recorder	1.00	6663	Inside	3377.77	
Recorder	1.00	8400	Outside	3378.77	
Bullnose	3.00			3381.77	57.77 Bottom Packers & Anchor

Total Tool Length: 77.77



DRILL STEM TEST REPORT

FLUID SUMMARY

K&N Petroleum

9-19s-12w-Barton

1105 Walnut Great Bend
Kansas 67530

Wess #6

Job Ticket: 17712

DST#: 4

ATTN: Jim Musgrove

Test Start: 2012.12.11 @ 04:00:00

Mud and Cushion Information

Mud Type: Gel Chem	Cushion Type:	Oil API:	deg API
Mud Weight: 9.00 lb/gal	Cushion Length: ft	Water Salinity:	ppm
Viscosity: 45.00 sec/qt	Cushion Volume: bbl		
Water Loss: 8.00 in ³	Gas Cushion Type:		
Resistivity: ohm.m	Gas Cushion Pressure: psia		
Salinity: 5700.00 ppm			
Filter Cake: 1.00 inches			

Recovery Information

Recovery Table

Length ft	Description	Volume bbl
15.00	Clean oil 100%	0.210
117.00	Oil cut mud 35% Oil 65% Mud	1.641
0.00	Gravity oil 44 corrected	0.000

Total Length: 132.00 ft Total Volume: 1.851 bbl

Num Fluid Samples: 0

Num Gas Bombs: 0

Serial #:

Laboratory Name:

Laboratory Location:

Recovery Comments:

DST Test Number: 4

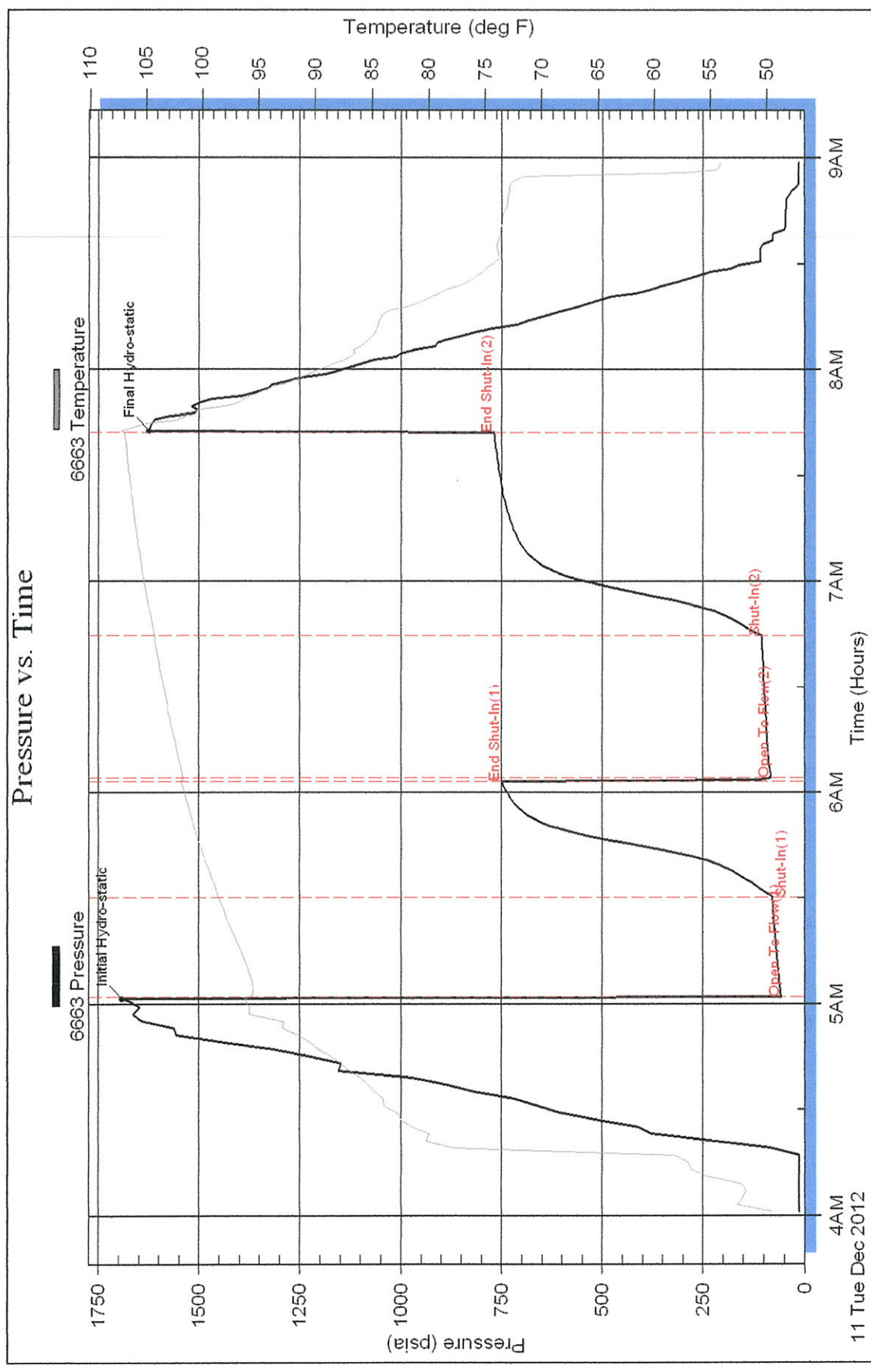
Wess #6

K&N Petroleum

Inside

Serial #: 6663

Pressure vs. Time



Printed: 2012.12.11 @ 21:15:37

Ref. No: 17712

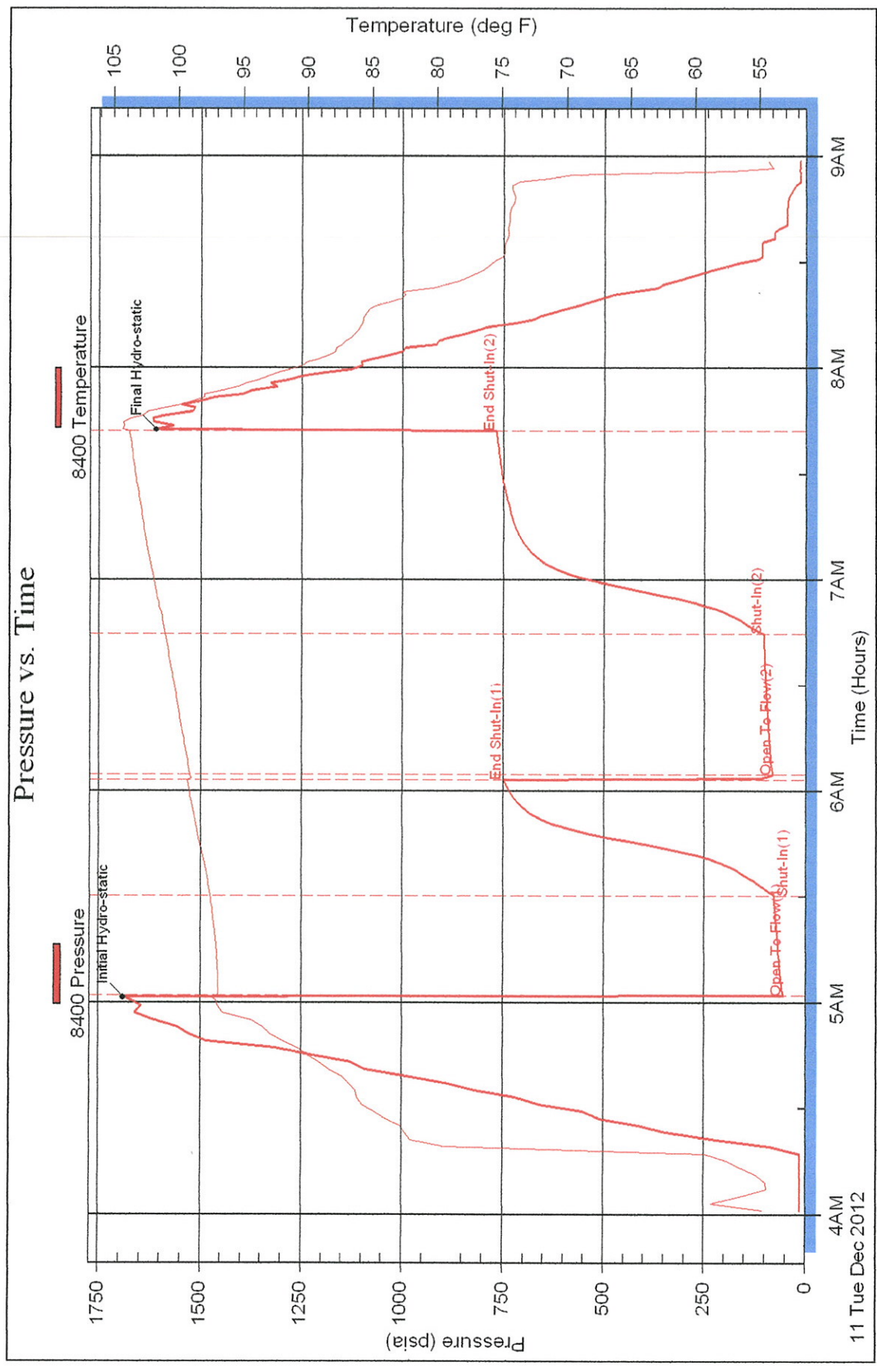
Superior Testers Enterprises LLC

DST Test Number: 4

Wess #6

Outside K&N Petroleum

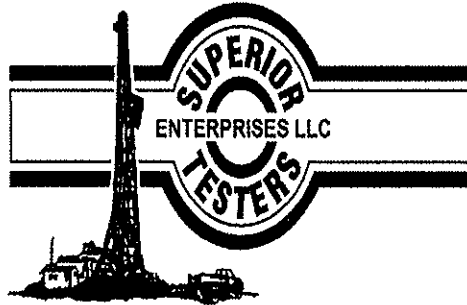
Serial #: 8400



Printed: 2012.12.11 @ 21:15:38

Ref. No: 17712

Superior Testers Enterprises LLC



DRILL STEM TEST REPORT

Prepared For: **K&N Petroleum**

1105 Walnut Great Bend
Kansas 67530

ATTN: Jim Musgrove

Wess #6

9-19s-12w-Barton

Start Date: 2012.12.12 @ 08:40:00

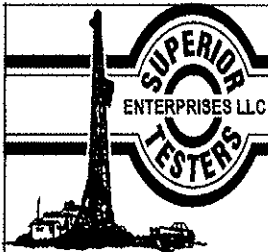
End Date: 2012.12.12 @ 14:16:00

Job Ticket #: 17713 DST #: 5

Superior Testers Enterprises LLC
PO Box 138 Great Bend KS 67530
1-800-792-6902

Printed: 2012.12.12 @ 14:37:51

K&N Petroleum 9-19s-12w-Barton Wess #6 DST # 5 Arbuckle 2012.12.12



DRILL STEM TEST REPORT

TOOL DIAGRAM

K&N Petroleum
 1105 Walnut Great Bend
 Kansas 67530
 ATTN: Jim Musgrove

9-19s-12w-Barton
Wess #6
 Job Ticket: 17713 DST#: 5
 Test Start: 2012.12.12 @ 08:40:00

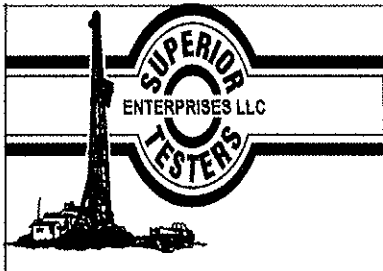
Tool Information

Drill Pipe:	Length: 3406.00 ft	Diameter: 3.80 inches	Volume: 47.78 bbl	Tool Weight: 2000.00 lb
Heavy Wt. Pipe:	Length: 0.00 ft	Diameter: 0.00 inches	Volume: 0.00 bbl	Weight set on Packer: 20000.00 lb
Drill Collar:	Length: 0.00 ft	Diameter: 0.00 inches	Volume: 0.00 bbl	Weight to Pull Loose: 40000.00 lb
			<u>Total Volume: 47.78 bbl</u>	Tool Chased 0.00 ft
Drill Pipe Above KB:	16.00 ft			String Weight: Initial 35000.00 lb
Depth to Top Packer:	3410.00 ft			Final 35000.00 lb
Depth to Bottom Packer:	ft			
Interval between Packers:	25.00 ft			
Tool Length:	45.00 ft			
Number of Packers:	2	Diameter: 6.75 inches		

Tool Comments:

Tool Description	Length (ft)	Serial No.	Position	Depth (ft)	Accum. Lengths
Shut-In Tool	5.00			3395.00	
Hydraulic Tool	5.00			3400.00	
Packer	5.00			3405.00	20.00 Bottom Of Top Packer
Packer	5.00			3410.00	
Anchor	20.00			3430.00	
Recorder	1.00	6663	Inside	3431.00	
Recorder	1.00	8400	Outside	3432.00	
Bullnose	3.00			3435.00	25.00 Bottom Packers & Anchor

Total Tool Length: 45.00



DRILL STEM TEST REPORT

K&N Petroleum
 1105 Walnut Great Bend
 Kansas 67530
 ATTN: Jim Musgrove

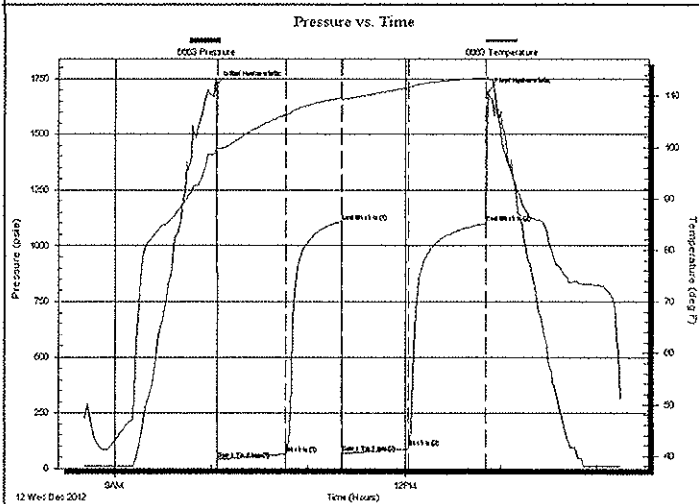
9-19s-12w-Barton
Wess #6
 Job Ticket: 17713 DST#: 5
 Test Start: 2012.12.12 @ 08:40:00

GENERAL INFORMATION:

Formation: **Arbuckle**
 Deviated: No Whipstock: ft (KB)
 Test Type: Conventional Bottom Hole (Initial)
 Time Tool Opened: 10:03:30 Tester: Dustin Ellis
 Time Test Ended: 14:16:00 Unit No: 3315-Great Bend-25
 Interval: **3410.00 ft (KB) To 3435.00 ft (KB) (TVD)** Reference Elevations: 1839.00 ft (KB)
 Total Depth: 3435.00 ft (KB) (TVD) 1832.00 ft (CF)
 Hole Diameter: 7.88 inches Hole Condition: Fair KB to GR/CF: 7.00 ft

Serial #: 6663 Inside
 Press@RunDepth: 1100.45 psia @ 3431.00 ft (KB) Capacity: 5000.00 psia
 Start Date: 2012.12.12 End Date: 2012.12.12 Last Calib.: 2012.12.12
 Start Time: 08:40:00 End Time: 14:16:00 Time On Btm: 2012.12.12 @ 10:03:00
 Time Off Btm: 2012.12.12 @ 12:51:30

TEST COMMENT: 1st Open 45 minutes Fair building blow blew 6.5 inches.
 1st Shut in 30 minutes No blow back
 2nd Open 45 minutes Fair building blow blew 7.5 inches.
 2nd Shut in 45 minutes No blow back



PRESSURE SUMMARY

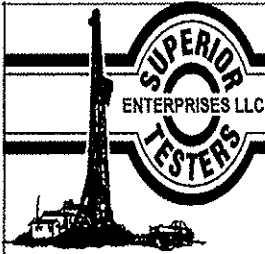
Time (Min.)	Pressure (psia)	Temp (deg F)	Annotation
0	1723.13	99.88	Initial Hydro-static
1	39.35	99.65	Open To Flow (1)
43	64.18	106.32	Shut-in(1)
78	1107.11	109.67	End Shut-in(1)
78	67.12	109.42	Open To Flow (2)
119	96.19	111.66	Shut-in(2)
168	1100.45	113.53	End Shut-in(2)
169	1690.56	113.67	Final Hydro-static

Recovery

Length (ft)	Description	Volume (bbl)
70.00	Clean Oil 100%	0.98
57.00	Oil cut muddy w ater	0.80
0.00	10%Oil 85%Mud 5%Water	0.00
0.00	Gravity of oil 42 corrected	0.00

Gas Rates

	Choke (inches)	Pressure (psia)	Gas Rate (Mcf/d)



DRILL STEM TEST REPORT

FLUID SUMMARY

K&N Petroleum
 1105 Walnut Great Bend
 Kansas 67530
 ATTN: Jim Musgrove

9-19s-12w-Barton
Wess #6
 Job Ticket: 17713 DST#: 5
 Test Start: 2012.12.12 @ 08:40:00

Mud and Cushion Information

Mud Type: Gel Chem	Cushion Type:	Oil API:	deg API
Mud Weight: 9.00 lb/gal	Cushion Length: ft	Water Salinity:	ppm
Viscosity: 48.00 sec/qt	Cushion Volume: bbl		
Water Loss: 8.40 in ³	Gas Cushion Type:		
Resistivity: ohm.m	Gas Cushion Pressure: psia		
Salinity: 7500.00 ppm			
Filter Cake: 1.00 inches			

Recovery Information

Recovery Table

Length ft	Description	Volume bbl
70.00	Clean Oil 100%	0.982
57.00	Oil cut muddy water	0.800
0.00	10%Oil 85%Mud 5%Water	0.000
0.00	Gravity of oil 42 corrected	0.000

Total Length: 127.00 ft Total Volume: 1.782 bbl
 Num Fluid Samples: 0 Num Gas Bombs: 0 Serial #:
 Laboratory Name: Laboratory Location:
 Recovery Comments:

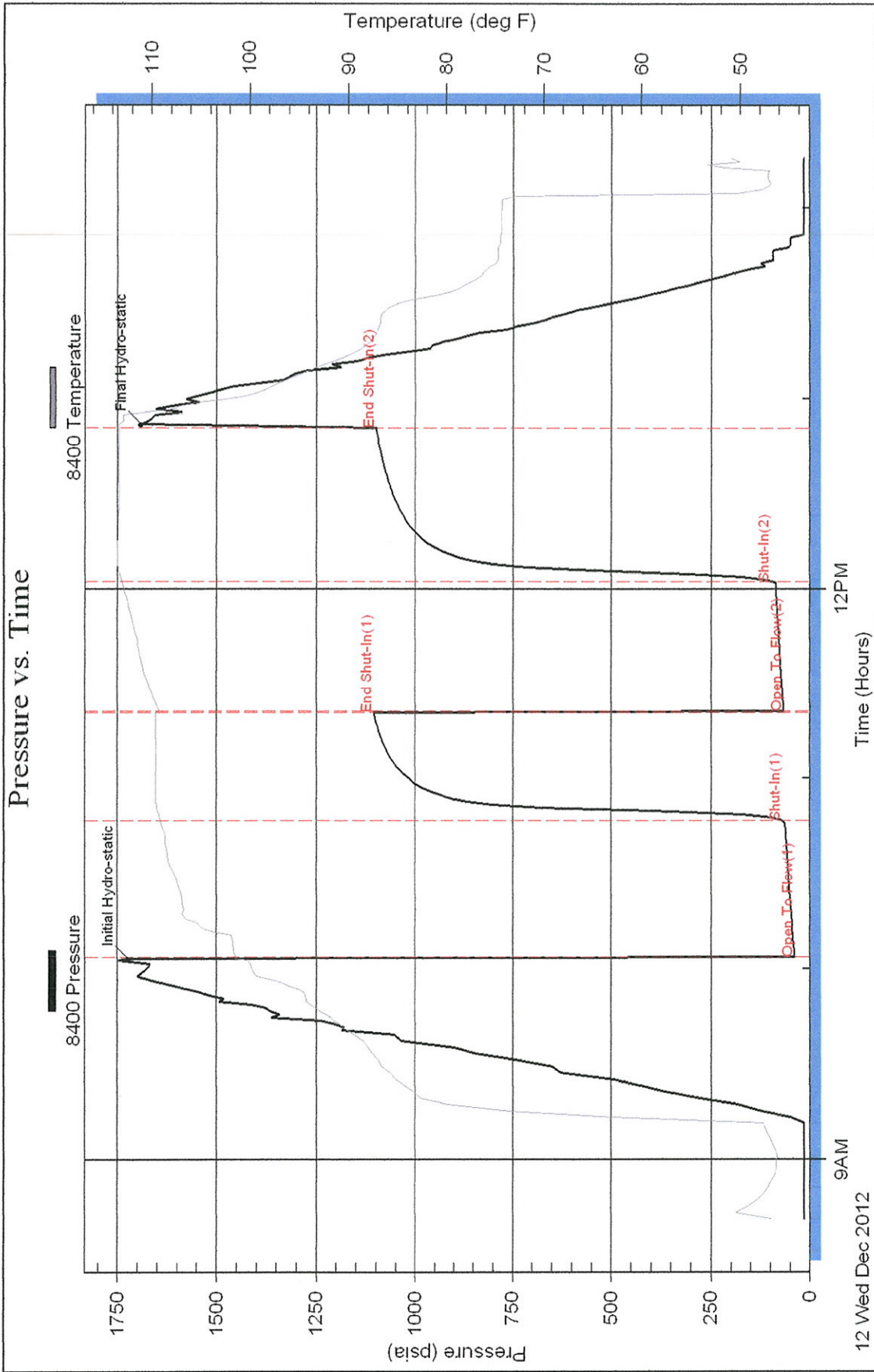
DST Test Number: 5

Wess #6

Outside K&N Petroleum

Serial #: 8400

Pressure vs. Time



Printed: 2012.12.12 @ 14:37:52

Ref. No: 17713

Superior Testers Enterprises LLC

DST Test Number: 5

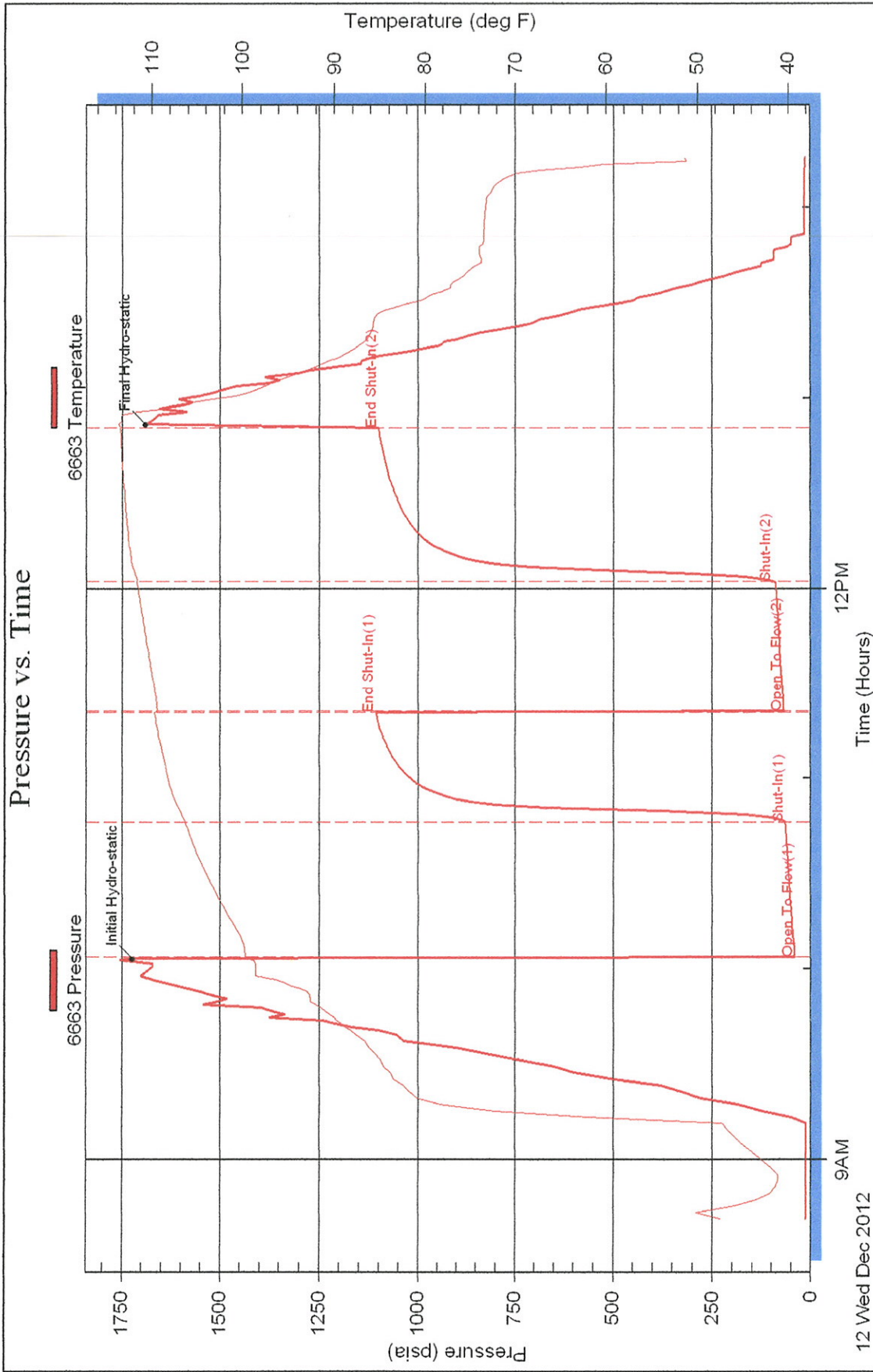
Wess #6

K&N Petroleum

Inside

Serial #: 6663

Pressure vs. Time



Printed: 2012.12.12 @ 14:37:53

Ref. No: 17713

Superior Testers Enterprises LLC



FIELD ORDER N° C 41665

BOX 438 • HAYSVILLE, KANSAS 67060
316-524-1225

DATE 12/16/12 20

IS AUTHORIZED BY: KSN Petroleum
(NAME OF CUSTOMER)

Address _____ City _____ State _____

To Treat Well As Follows: Lease Lease Well No. 6 Customer Order No. _____

Sec. Twp. Range _____ County Barton State Ks

CONDITIONS: As a part of the consideration hereof it is agreed that Copeland Acid Service is to service or treat at owners risk, the hereinbefore mentioned well and is not to be held liable for any damage that may accrue in connection with said service or treatment. Copeland Acid Service has made no representation, expressed or implied, and no representations have been relied on, as to what may be the results or effect of the servicing or treating said well. The consideration of said service or treatment is payable. There will be no discount allowed subsequent to such date. 6% interest will be charged after 60 days. Total charges are subject to correction by our invoicing department in accordance with latest published price schedules.

The undersigned represents himself to be duly authorized to sign this order for well owner or operator.

THIS ORDER MUST BE SIGNED BEFORE WORK IS COMMENCED _____ By _____ Agent

Well Owner or Operator

Agent

CODE	QUANTITY	DESCRIPTION	UNIT COST	AMOUNT
	5	mileage pump truck	4. ⁰⁰ / ₁₀₀	20. ⁰⁰ / ₁₀₀
	5	mileage pickup	2. ⁰⁰ / ₁₀₀	10. ⁰⁰ / ₁₀₀
	1	Pump Charge	1100	1,100. ⁰⁰ / ₁₀₀
	700	65/35 20% gel.	9. ⁷⁵ / ₁₅₁	1,850. ⁰⁰ / ₁₀₀
	8	4% add. gel.	22. ⁰⁰ / ₁₀₀	176. ⁰⁰ / ₁₀₀
	150	Common	11. ⁷⁵ / ₁₅₁	1,657. ⁵⁰ / ₁₀₀
	13	Calcium Chloride	40. ⁰⁰ / ₁₀₀	520. ⁰⁰ / ₁₀₀
	1	8 5/8" Plug		65. ⁰⁰ / ₁₀₀
	1	8 5/8" Baffle		105. ⁰⁰ / ₁₀₀
	371	Bulk Charge	1. ²⁵ / ₁₅₁	463. ⁷⁵ / ₁₀₀
		Bulk Truck Miles $16.77 T \times 5 m = 83.85 Tm \times 1.00/100$	\$ min.	150. ⁰⁰ / ₁₀₀
		Process License Fee on _____ Gallons		
TOTAL BILLING				6,147.⁷⁵/₁₀₀

I certify that the above material has been accepted and used; that the above service was performed in a good and workmanlike manner under the direction, supervision and control of the owner, operator or his agent, whose signature appears below.

Copeland Representative Nathan W.

Station G.B.

Ed
Well Owner, Operator or Agent

Remarks _____

NET 30 DAYS

TREATMENT REPORT

Acid Stage No.

Date: 12/13/12 District: G.B F. O. No. C41672
 Company: KON Petroleum
 Well Name & No. Wess # 8
 Location: _____ Field: _____
 County: Deaton State: KS
 Casing: Size 5 1/2" Type & Wt. 140# Set at _____ ft.
 Formation: _____ Perf. _____ to _____
 Formation: _____ Perf. _____ to _____
 Formation: _____ Perf. _____ to _____
 Liner: Size _____ Type & Wt. _____ Top at _____ ft. Bottom at _____ ft.
 Cemented: Yes/No _____ Perforated from _____ ft. to _____ ft.
 Tubing: Size & Wt. _____ Swung at _____ ft.
 Perforated from _____ ft. to _____ ft.
 Open Hole Size _____ T.D. _____ ft. P.B. to _____ ft.

Type Treatment: Amt. _____ Type Fluid _____ Band Size _____ Pounds of Sand _____
 Bkdwn _____ Bbl./Gal. _____
 _____ Bbl./Gal. _____
 _____ Bbl./Gal. _____
 _____ Bbl./Gal. _____
 Flush _____ Bbl./Gal. _____
 Treated from _____ ft. to _____ ft. No. ft. _____
 from _____ ft. to _____ ft. No. ft. _____
 from _____ ft. to _____ ft. No. ft. _____
 Actual Volume of Oil/Water to Load Hole: _____ Bbl./Gal.
 Pump Trucks: No. Used: Std. 300 3/4 Sp. _____ Twin _____
 Auxiliary Equipment 317/310
 Packer: _____ Set at _____ ft.
 Auxiliary Tools _____
 Plugging or Sealing Materials: Type _____ (Gal. _____) lb. _____

Company Representative Ed Treater Nathan W.

TIME (a.m./p.m.)	PRESSURES		Total Fluid Pumped	REMARKS
	Tubing	Casing		
9:00	-	5 1/2"		On location.
:				
:				
:				TD = 3510'
:				Pipe = 3557.69
:				- 14.51 (-97)
:				42.95 (64)
:				3500.23
:				+ 6.00 (L.J.)
:				3506.23
:				- 13.14 (S.T.)
:				<u>3495. (Refl)</u>
:				
:				Break-circulation w/ mud pump.
:				Circulate 30 min
:				Pump (M) gal mud-Flush.
:				Plus Red-Hole w/ 30 sts
:				Mix 170 sts. 60% ya par, 20% gal, 18% sold.
:				3/4% CFB-2 1/2% defoamer 3#/st. silsanite,
:				Displace w/ 85.2 bbls. @ 6 1/2 bpm @
:				800# Plus landed @ 1,800#
1:15				Released Fleet Held
:				
:				Thank You!
:				Nathan W.

GEOLOGIST'S REPORT

DRILLING TIME AND SAMPLE LOG

COMPANY: **K&N Petroleum**

WELL: **Wess #6**

FIELD: **Knop**

LOCATION: **5/2-NE-SW-5E (800' FSL; 1650' FEL)**

SEC: **9**

TWP: **19^s**

RANGE: **12^w**

COUNTY: **Barton**

STATE: **Kansas**

CONTRACTOR: **Southwind Drilling (rig #4)**

SPUD: **12/5/12**

COMP: **12/12/12**

RIG: **3510**

MUD WP: **2900'**

TYPE MUD: **Chemical displaced**

By Pioneer
 Duke Industries
 RTD
 Due compensated possibly
 & micro

SAMPLES SAVED FROM: **2800**

DRILLING TIME KEPT FROM: **2800**

SAMPLES EXAMINED FROM: **2800**

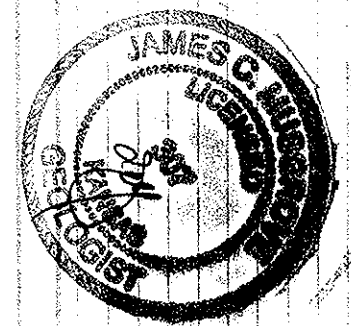
GEOLOGICAL SUPERVISION FROM: **3000**

GEOLOGIST ON WELL: **Jim Musgrove**

FORMATION TOPS: **665 +181**

SAMPLES: **689 +1157**

anhydrite
 Base anhydrite
 Heebner
 Toronto
 Douglas
 Brown Nime
 Mansing
 Base Kansas City
 Apbuckie
 RTD
 RTD
665 +181
3008 -1162
3026 -1180
3042 -1196
3121 -1275
3135 -1289
3371 -1525
3398 -1552
3510 -1664

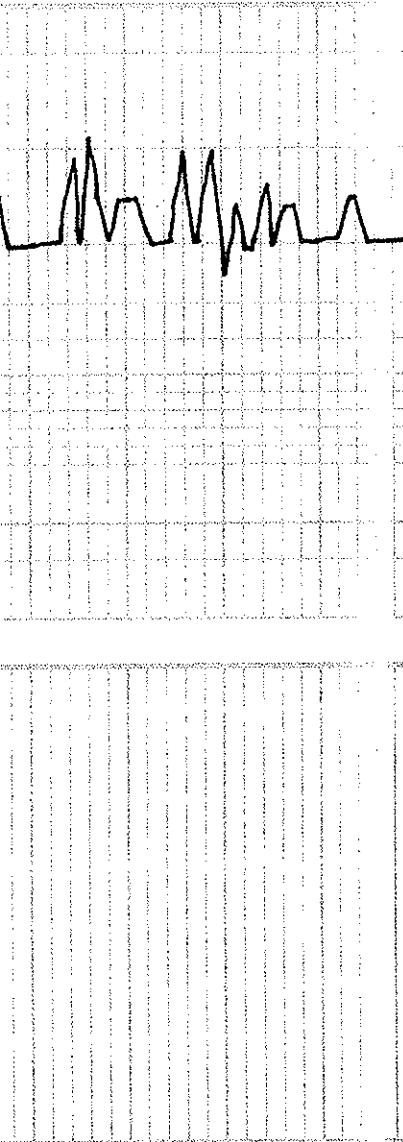
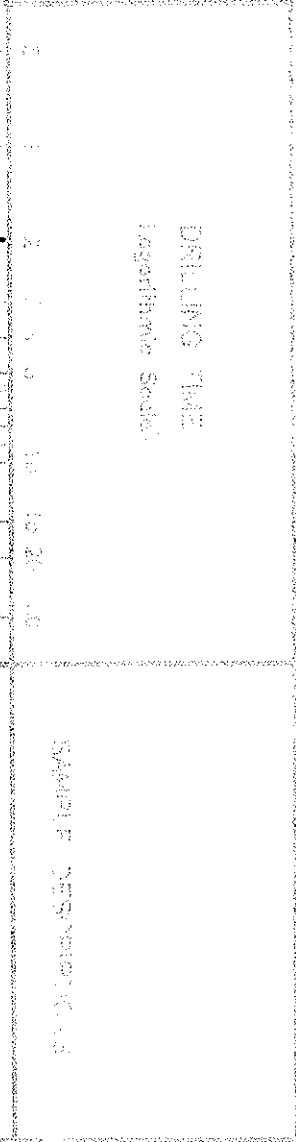


5 1/2" production casing
 was set and cemented on
 the wess #6.

Respectfully Submitted
 James C. Musgrove
 Petroleum Geologist

LEGEND

- Shale
- Sandstone
- Shale
- Dark sh
- Unconform
- Oolite
- Chert
- Dolomite



106 7702

7505