



WELL COMPLETION FORM
WELL HISTORY - DESCRIPTION OF WELL & LEASE

OPERATOR: License # _____

Name: _____

Address 1: _____

Address 2: _____

City: _____ State: _____ Zip: _____ + _____

Contact Person: _____

Phone: (_____) _____

CONTRACTOR: License # _____

Name: _____

Wellsite Geologist: _____

Purchaser: _____

Designate Type of Completion:

- New Well Re-Entry Workover
- Oil WSW SWD SIOW
- Gas D&A ENHR SIGW
- OG GSW Temp. Abd.
- CM (Coal Bed Methane)
- Cathodic Other (Core, Expl., etc.): _____

If Workover/Re-entry: Old Well Info as follows:

Operator: _____

Well Name: _____

Original Comp. Date: _____ Original Total Depth: _____

- Deepening Re-perf. Conv. to ENHR Conv. to SWD
- Conv. to GSW
- Plug Back: _____ Plug Back Total Depth _____
- Commingled Permit #: _____
- Dual Completion Permit #: _____
- SWD Permit #: _____
- ENHR Permit #: _____
- GSW Permit #: _____

Spud Date or Recompletion Date	Date Reached TD	Completion Date or Recompletion Date
-----------------------------------	-----------------	-----------------------------------------

API No. 15 - _____

Spot Description: _____

_____ - _____ - _____ Sec. _____ Twp. _____ S. R. _____ East West

_____ Feet from North / South Line of Section

_____ Feet from East / West Line of Section

Footages Calculated from Nearest Outside Section Corner:

- NE NW SE SW

County: _____

Lease Name: _____ Well #: _____

Field Name: _____

Producing Formation: _____

Elevation: Ground: _____ Kelly Bushing: _____

Total Depth: _____ Plug Back Total Depth: _____

Amount of Surface Pipe Set and Cemented at: _____ Feet

Multiple Stage Cementing Collar Used? Yes No

If yes, show depth set: _____ Feet

If Alternate II completion, cement circulated from: _____

feet depth to: _____ w/ _____ sx cmt.

Drilling Fluid Management Plan

(Data must be collected from the Reserve Pit)

Chloride content: _____ ppm Fluid volume: _____ bbls

Dewatering method used: _____

Location of fluid disposal if hauled offsite: _____

Operator Name: _____

Lease Name: _____ License #: _____

Quarter _____ Sec. _____ Twp. _____ S. R. _____ East West

County: _____ Permit #: _____

AFFIDAVIT

I am the affiant and I hereby certify that all requirements of the statutes, rules and regulations promulgated to regulate the oil and gas industry have been fully complied with and the statements herein are complete and correct to the best of my knowledge.

Submitted Electronically

KCC Office Use ONLY

- Letter of Confidentiality Received
Date: _____
- Confidential Release Date: _____
- Wireline Log Received
- Geologist Report Received
- UIC Distribution
- ALT I II III Approved by: _____ Date: _____



Operator Name: _____ Lease Name: _____ Well #: _____

Sec. _____ Twp. _____ S. R. _____ East West County: _____

INSTRUCTIONS: Show important tops and base of formations penetrated. Detail all cores. Report all final copies of drill stems tests giving interval tested, time tool open and closed, flowing and shut-in pressures, whether shut-in pressure reached static level, hydrostatic pressures, bottom hole temperature, fluid recovery, and flow rates if gas to surface test, along with final chart(s). Attach extra sheet if more space is needed. Attach complete copy of all Electric Wire-line Logs surveyed. Attach final geological well site report.

Drill Stem Tests Taken <input type="checkbox"/> Yes <input type="checkbox"/> No <i>(Attach Additional Sheets)</i> Samples Sent to Geological Survey <input type="checkbox"/> Yes <input type="checkbox"/> No Cores Taken <input type="checkbox"/> Yes <input type="checkbox"/> No Electric Log Run <input type="checkbox"/> Yes <input type="checkbox"/> No Electric Log Submitted Electronically <input type="checkbox"/> Yes <input type="checkbox"/> No <i>(If no, Submit Copy)</i> List All E. Logs Run:	<input type="checkbox"/> Log Formation (Top), Depth and Datum <input type="checkbox"/> Sample Name Top Datum
-----------------------------------------------------------------------------------------------------------------------------------------------------------------------------------------------------------------------------------------------------------------------------------------------------------------------------------------------------------------------------------------------------------------------------------------------------------------------------------------------------------------------------------------------	---------------------------------------------------------------------------------------------------------------------

CASING RECORD <input type="checkbox"/> New <input type="checkbox"/> Used							
Report all strings set-conductor, surface, intermediate, production, etc.							
Purpose of String	Size Hole Drilled	Size Casing Set (In O.D.)	Weight Lbs. / Ft.	Setting Depth	Type of Cement	# Sacks Used	Type and Percent Additives

ADDITIONAL CEMENTING / SQUEEZE RECORD				
Purpose:	Depth Top Bottom	Type of Cement	# Sacks Used	Type and Percent Additives
<input type="checkbox"/> Perforate <input type="checkbox"/> Protect Casing <input type="checkbox"/> Plug Back TD <input type="checkbox"/> Plug Off Zone				

Shots Per Foot	PERFORATION RECORD - Bridge Plugs Set/Type Specify Footage of Each Interval Perforated	Acid, Fracture, Shot, Cement Squeeze Record <i>(Amount and Kind of Material Used)</i>	Depth

TUBING RECORD: Size: _____ Set At: _____ Packer At: _____ Liner Run: Yes No

Date of First, Resumed Production, SWD or ENHR. _____ Producing Method: Flowing Pumping Gas Lift Other (Explain) _____

Estimated Production Per 24 Hours	Oil Bbls.	Gas Mcf	Water Bbls.	Gas-Oil Ratio	Gravity
-----------------------------------	-----------	---------	-------------	---------------	---------

DISPOSITION OF GAS: <input type="checkbox"/> Vented <input type="checkbox"/> Sold <input type="checkbox"/> Used on Lease <i>(If vented, Submit ACO-18.)</i>	METHOD OF COMPLETION: <input type="checkbox"/> Open Hole <input type="checkbox"/> Perf. <input type="checkbox"/> Dually Comp. <input type="checkbox"/> Commingled <i>(Submit ACO-5)</i> <i>(Submit ACO-4)</i> <input type="checkbox"/> Other (Specify) _____	PRODUCTION INTERVAL: _____ _____
-------------------------------------------------------------------------------------------------------------------------------------------------------------------	-----------------------------------------------------------------------------------------------------------------------------------------------------------------------------------------------------------------------------------------------------------------------	----------------------------------------



DRILL STEM TEST REPORT

Prepared For: **Charter Energy, Inc.**

PO Box 252
Great Bend, KS 67530-0252

ATTN: Jim Musgrove

Grant Unit #1

34-20s-16w Pawnee,KS

Start Date: 2012.10.24 @ 18:22:22

End Date: 2012.10.25 @ 01:26:37

Job Ticket #: 49585 DST #: 1

Trilobite Testing, Inc

PO Box 362 Hays, KS 67601

ph: 785-625-4778 fax: 785-625-5620

Printed: 2012.10.26 @ 08:59:13

Charter Energy, Inc. 34-20s-16w Pawnee,KS Grant Unit #1 DST # 1 Arbuckle 2012.10.24



**TRILOBITE
TESTING, INC.**

DRILL STEM TEST REPORT

Charter Energy, Inc.
PO Box 252
Great Bend, KS 67530-0252
ATTN: Jim Musgrove

34-20s-16w Pawnee, KS
Grant Unit #1
Job Ticket: 49585 **DST#: 1**
Test Start: 2012.10.24 @ 18:22:22

GENERAL INFORMATION:

Formation: **Arbuckle**
Deviated: No Whipstock: ft (KB)
Time Tool Opened: 19:57:37
Time Test Ended: 01:26:37
Interval: **3665.00 ft (KB) To 3740.00 ft (KB) (TVD)**
Total Depth: 3740.00 ft (KB) (TVD)
Hole Diameter: 7.88 inches Hole Condition: Poor
Test Type: Conventional Bottom Hole (Initial)
Tester: Ryan Reynolds
Unit No: 48
Reference Elevations: 2007.00 ft (KB)
2000.00 ft (CF)
KB to GR/CF: 7.00 ft

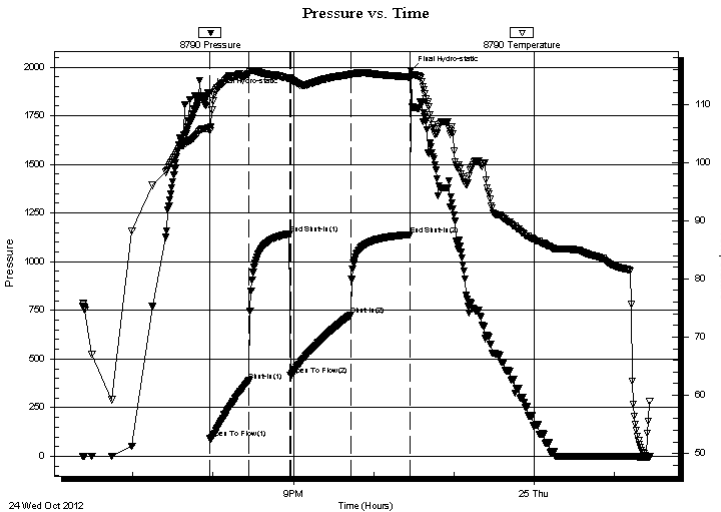
Serial #: 8790

Inside

Press @ Run Depth: 725.74 psig @ 3666.00 ft (KB) Capacity: 8000.00 psig
Start Date: 2012.10.24 End Date: 2012.10.25 Last Calib.: 2012.10.25
Start Time: 18:22:27 End Time: 01:26:36 Time On Btm: 2012.10.24 @ 19:57:07
Time Off Btm: 2012.10.24 @ 22:27:37

TEST COMMENT: IF: Strong blow . BOB 3 min. No GTS.
IS: No blow
FF: Strong blow . BOB 4 min. No GTS.
FS: No blow

PRESSURE SUMMARY



Time (Min.)	Pressure (psig)	Temp (deg F)	Annotation
0	1869.88	106.00	Initial Hydro-static
1	90.79	105.48	Open To Flow (1)
30	384.61	115.18	Shut-In(1)
60	1142.74	114.51	End Shut-In(1)
61	416.85	114.30	Open To Flow (2)
106	725.74	115.14	Shut-In(2)
150	1139.31	114.67	End Shut-In(2)
151	1982.97	114.63	Final Hydro-static

Recovery

Length (ft)	Description	Volume (bbl)
590.00	Clean gassy w tr. 5%gas, 95%w tr	8.28
600.00	GMCW 5%gas, 20%mud, 75%w tr	8.42
500.00	MCW 40%mud, 60%w tr.	7.01

Gas Rates

	Choke (inches)	Pressure (psig)	Gas Rate (Mcf/d)



**TRILOBITE
TESTING, INC.**

DRILL STEM TEST REPORT

Charter Energy, Inc.
PO Box 252
Great Bend, KS 67530-0252
ATTN: Jim Musgrove

34-20s-16w Pawnee, KS
Grant Unit #1
Job Ticket: 49585 **DST#: 1**
Test Start: 2012.10.24 @ 18:22:22

GENERAL INFORMATION:

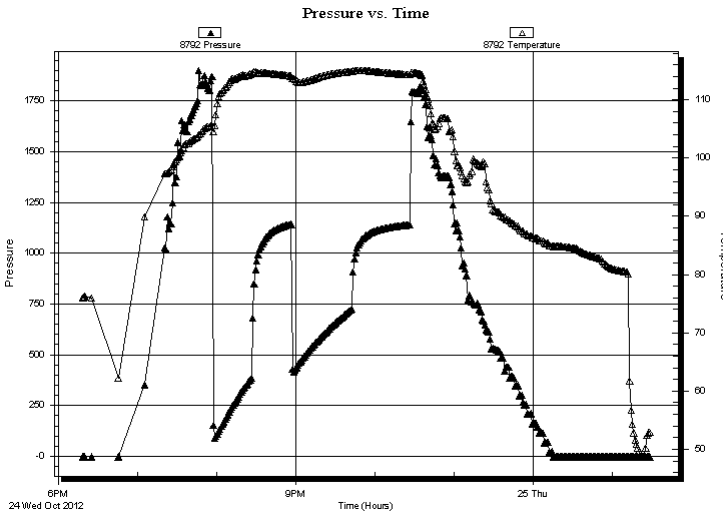
Formation: **Arbuckle**
Deviated: No Whipstock: ft (KB) Test Type: Conventional Bottom Hole (Initial)
Time Tool Opened: 19:57:37 Tester: Ryan Reynolds
Time Test Ended: 01:26:37 Unit No: 48
Interval: 3665.00 ft (KB) To 3740.00 ft (KB) (TVD) Reference Elevations: 2007.00 ft (KB)
Total Depth: 3740.00 ft (KB) (TVD) 2000.00 ft (CF)
Hole Diameter: 7.88 inches Hole Condition: Poor KB to GR/CF: 7.00 ft

Serial #: 8792 Outside

Press @ Run Depth: psig @ 3666.00 ft (KB) Capacity: 8000.00 psig
Start Date: 2012.10.24 End Date: 2012.10.25 Last Calib.: 2012.10.25
Start Time: 18:18:10 End Time: 01:29:04 Time On Btm:
Time Off Btm:

TEST COMMENT: IF: Strong blow . BOB 3 min. No GTS.
IS: No blow
FF: Strong blow . BOB 4 min. No GTS.
FS: No blow

PRESSURE SUMMARY



Time (Min.)	Pressure (psig)	Temp (deg F)	Annotation

Recovery

Length (ft)	Description	Volume (bbl)
590.00	Clean gassy w tr. 5%gas, 95%w tr	8.28
600.00	GMCW 5%gas, 20%mud, 75%w tr	8.42
500.00	MCW 40%mud, 60%w tr.	7.01

Gas Rates

	Choke (inches)	Pressure (psig)	Gas Rate (Mcf/d)



**TRILOBITE
TESTING, INC.**

DRILL STEM TEST REPORT

TOOL DIAGRAM

Charter Energy, Inc.
PO Box 252
Great Bend, KS 67530-0252
ATTN: Jim Musgrove

34-20s-16w Pawnee, KS
Grant Unit #1
Job Ticket: 49585 **DST#: 1**
Test Start: 2012.10.24 @ 18:22:22

Tool Information

Drill Pipe:	Length: 3667.00 ft	Diameter: 3.80 inches	Volume: 51.44 bbl	Tool Weight: 1900.00 lb
Heavy Wt. Pipe:	Length: 0.00 ft	Diameter: 0.00 inches	Volume: 0.00 bbl	Weight set on Packer: 23000.00 lb
Drill Collar:	Length: 0.00 ft	Diameter: 0.00 inches	Volume: 0.00 bbl	Weight to Pull Loose: 65000.00 lb
			<u>Total Volume: 51.44 bbl</u>	Tool Chased 0.00 ft
Drill Pipe Above KB:	22.00 ft			String Weight: Initial 38000.00 lb
Depth to Top Packer:	3665.00 ft			Final 44000.00 lb
Depth to Bottom Packer:	ft			
Interval between Packers:	75.00 ft			
Tool Length:	95.00 ft			
Number of Packers:	2	Diameter: 6.75 inches		

Tool Comments:

Tool Description	Length (ft)	Serial No.	Position	Depth (ft)	Accum. Lengths
-------------------------	--------------------	-------------------	-----------------	-------------------	-----------------------

Shut In Tool	5.00			3650.00	
Hydraulic tool	5.00			3655.00	
Packer	5.00			3660.00	20.00 Bottom Of Top Packer
Packer	5.00			3665.00	
Stubb	1.00			3666.00	
Recorder	0.00	8790	Inside	3666.00	
Recorder	0.00	8792	Outside	3666.00	
Perforations	2.00			3668.00	
Blank Spacing	65.00			3733.00	
Perforations	4.00			3737.00	
Bullnose	3.00			3740.00	75.00 Bottom Packers & Anchor

Total Tool Length: 95.00



**TRILOBITE
TESTING, INC.**

DRILL STEM TEST REPORT

FLUID SUMMARY

Charter Energy, Inc.
PO Box 252
Great Bend, KS 67530-0252
ATTN: Jim Musgrove

34-20s-16w Pawnee,KS
Grant Unit #1
Job Ticket: 49585 **DST#: 1**
Test Start: 2012.10.24 @ 18:22:22

Mud and Cushion Information

Mud Type: Gel Chem	Cushion Type:	Oil API:	deg API
Mud Weight: 9.00 lb/gal	Cushion Length: ft	Water Salinity:	35000 ppm
Viscosity: 58.00 sec/qt	Cushion Volume: bbl		
Water Loss: 9.59 in ³	Gas Cushion Type:		
Resistivity: ohm.m	Gas Cushion Pressure: psig		
Salinity: 8600.00 ppm			
Filter Cake: 0.02 inches			

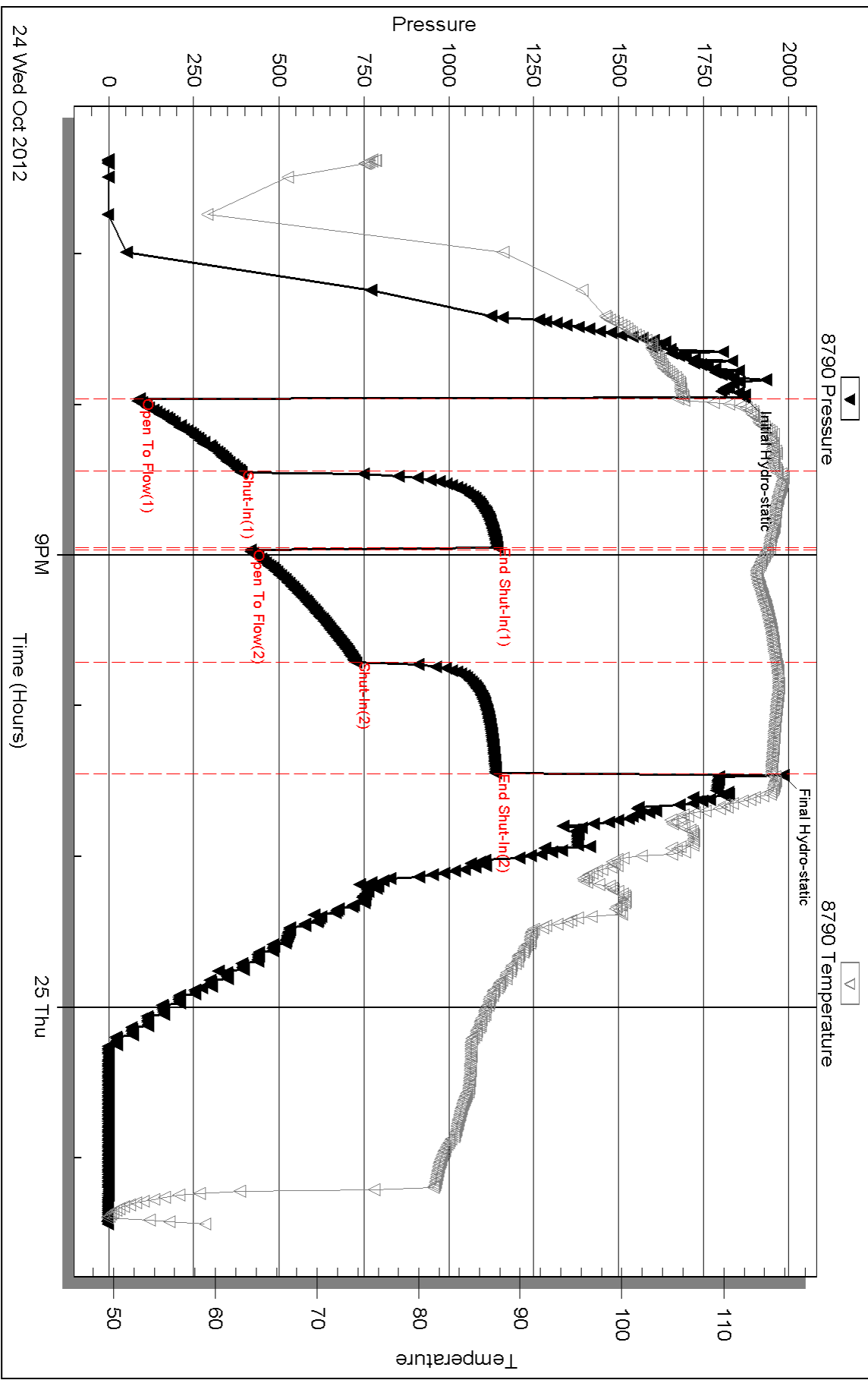
Recovery Information

Recovery Table

Length ft	Description	Volume bbl
590.00	Clean gassy w tr. 5%gas, 95%w tr	8.276
600.00	GMCW 5%gas, 20%mud, 75%w tr	8.416
500.00	MCW 40%mud, 60%w tr.	7.014

Total Length: 1690.00 ft Total Volume: 23.706 bbl
Num Fluid Samples: 0 Num Gas Bombs: 0 Serial #: none
Laboratory Name: Laboratory Location:
Recovery Comments:

Pressure vs. Time

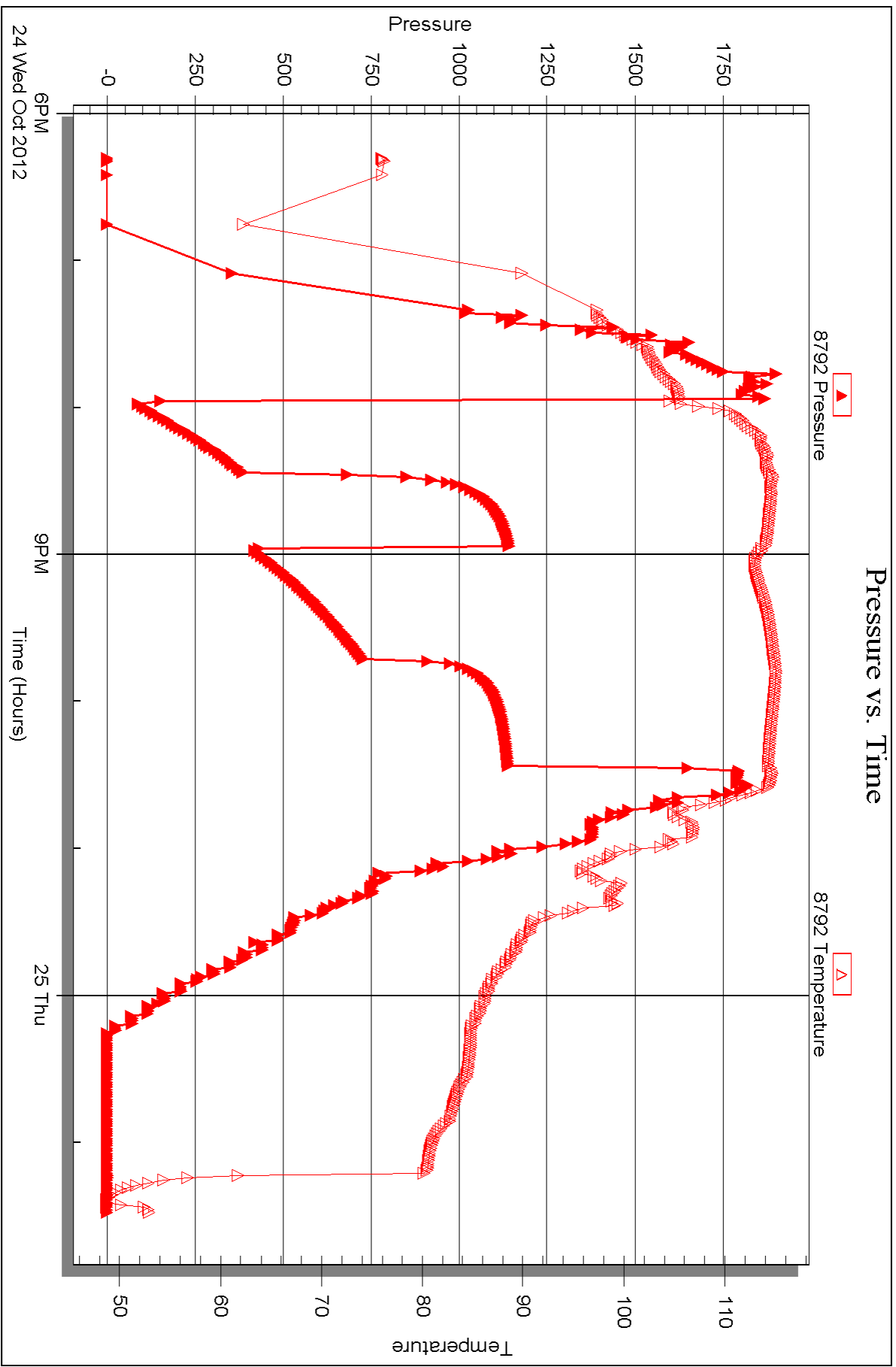


Serial #: 8792

Outside Charter Energy, Inc.

Grant Unit #1

DST Test Number: 1





DRILL STEM TEST REPORT

Prepared For: **Charter Energy, Inc.**

PO Box 252
Great Bend, KS 67530-0252

ATTN: Jim Musgrove

Grant Unit #1

34-20s-16w Pawnee,KS

Start Date: 2012.10.25 @ 12:39:14

End Date: 2012.10.25 @ 17:58:14

Job Ticket #: 49586 DST #: 2

Trilobite Testing, Inc

PO Box 362 Hays, KS 67601

ph: 785-625-4778 fax: 785-625-5620

Printed: 2012.10.26 @ 08:58:18



**TRILOBITE
TESTING, INC.**

DRILL STEM TEST REPORT

Charter Energy, Inc.
 PO Box 252
 Great Bend, KS 67530-0252
 ATTN: Jim Musgrove

34-20s-16w Pawnee, KS
Grant Unit #1
 Job Ticket: 49586 **DST#: 2**
 Test Start: 2012.10.25 @ 12:39:14

GENERAL INFORMATION:

Formation: **Arbuckle**
 Deviated: No Whipstock: ft (KB)
 Test Type: Conventional Bottom Hole (Reset)
 Time Tool Opened: 13:57:59
 Tester: Ryan Reynolds
 Time Test Ended: 17:58:14
 Unit No: 48
Interval: 3771.00 ft (KB) To 3791.00 ft (KB) (TVD)
 Reference Elevations: 2007.00 ft (KB)
 Total Depth: 3791.00 ft (KB) (TVD) 2000.00 ft (CF)
 Hole Diameter: 7.88 inches Hole Condition: Poor KB to GR/CF: 7.00 ft

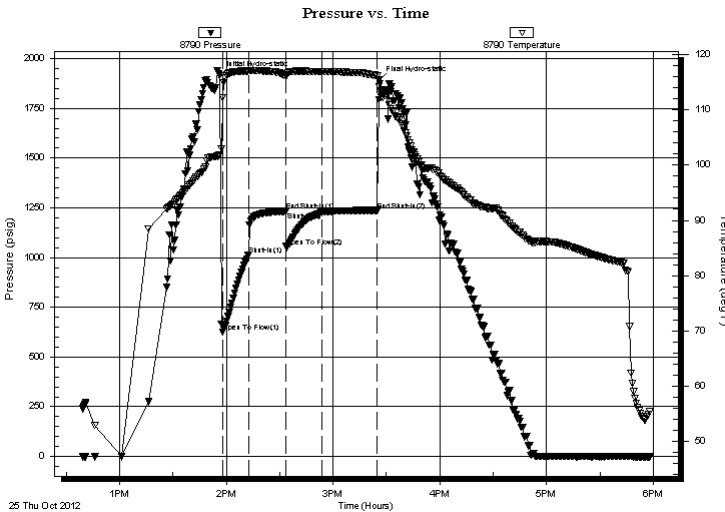
Serial #: 8790

Inside

Press @ Run Depth: 1229.18 psig @ 3772.00 ft (KB) Capacity: 8000.00 psig
 Start Date: 2012.10.25 End Date: 2012.10.25 Last Calib.: 2012.10.25
 Start Time: 12:39:19 End Time: 17:58:13 Time On Btm: 2012.10.25 @ 13:56:29
 Time Off Btm: 2012.10.25 @ 15:25:59

TEST COMMENT: IF: Strong blow . BOB 45 sec. No GTS.
 IS: Weak surf. BB
 FF: Strong blow . BOB 2 min. No GTS.
 FS: No blow .

PRESSURE SUMMARY



Time (Min.)	Pressure (psig)	Temp (deg F)	Annotation
0	1915.22	101.82	Initial Hydro-static
2	625.13	112.18	Open To Flow (1)
16	1014.63	116.98	Shut-In(1)
37	1232.80	116.17	End Shut-In(1)
38	1055.84	116.10	Open To Flow (2)
58	1229.18	116.89	Shut-In(2)
89	1237.37	116.20	End Shut-In(2)
90	1891.64	114.15	Final Hydro-static

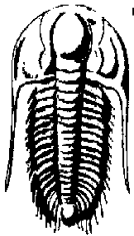
Recovery

Length (ft)	Description	Volume (bbl)
2040.00	GCW 5%gas, 95%w tr	28.62
700.00	MCW 30%mud, 70%w tr	9.82

* Recovery from multiple tests

Gas Rates

Choke (inches)	Pressure (psig)	Gas Rate (Mcf/d)



TRILOBITE TESTING, INC.

DRILL STEM TEST REPORT

Charter Energy, Inc.
PO Box 252
Great Bend, KS 67530-0252
ATTN: Jim Musgrove

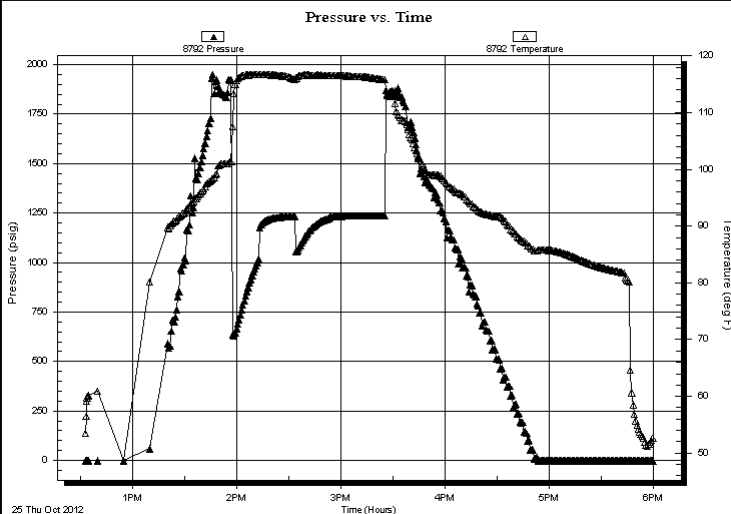
34-20s-16w Pawnee, KS
Grant Unit #1
Job Ticket: 49586 **DST#: 2**
Test Start: 2012.10.25 @ 12:39:14

GENERAL INFORMATION:

Formation: **Arbuckle**
Deviated: No Whipstock: ft (KB) Test Type: Conventional Bottom Hole (Reset)
Time Tool Opened: 13:57:59 Tester: Ryan Reynolds
Time Test Ended: 17:58:14 Unit No: 48
Interval: 3771.00 ft (KB) To 3791.00 ft (KB) (TVD) Reference Elevations: 2007.00 ft (KB)
Total Depth: 3791.00 ft (KB) (TVD) 2000.00 ft (CF)
Hole Diameter: 7.88 inches Hole Condition: Poor KB to GR/CF: 7.00 ft

Serial #: 8792 Outside
Press @ Run Depth: psig @ 3772.00 ft (KB) Capacity: 8000.00 psig
Start Date: 2012.10.25 End Date: 2012.10.25 Last Calib.: 2012.10.25
Start Time: 12:32:50 End Time: 17:59:44 Time On Btm:
Time Off Btm:

TEST COMMENT: IF: Strong blow . BOB 45 sec. No GTS.
IS: Weak surf. BB
FF: Strong blow . BOB 2 min. No GTS.
FS: No blow .



PRESSURE SUMMARY

Time (Min.)	Pressure (psig)	Temp (deg F)	Annotation

Recovery

Length (ft)	Description	Volume (bbl)
2040.00	GCW 5%gas, 95%w tr	28.62
700.00	MCW 30%mud, 70%w tr	9.82

* Recovery from multiple tests

Gas Rates

Choke (inches)	Pressure (psig)	Gas Rate (Mcf/d)



**TRILOBITE
TESTING, INC.**

DRILL STEM TEST REPORT

TOOL DIAGRAM

Charter Energy, Inc.
PO Box 252
Great Bend, KS 67530-0252
ATTN: Jim Musgrove

34-20s-16w Pawnee, KS
Grant Unit #1
Job Ticket: 49586 **DST#: 2**
Test Start: 2012.10.25 @ 12:39:14

Tool Information

Drill Pipe:	Length: 3761.00 ft	Diameter: 3.80 inches	Volume: 52.76 bbl	Tool Weight: 1900.00 lb
Heavy Wt. Pipe:	Length: 0.00 ft	Diameter: 0.00 inches	Volume: 0.00 bbl	Weight set on Packer: 23000.00 lb
Drill Collar:	Length: 0.00 ft	Diameter: 0.00 inches	Volume: 0.00 bbl	Weight to Pull Loose: 63000.00 lb
			<u>Total Volume: 52.76 bbl</u>	Tool Chased 0.00 ft
Drill Pipe Above KB:	10.00 ft			String Weight: Initial 38000.00 lb
Depth to Top Packer:	3771.00 ft			Final 47000.00 lb
Depth to Bottom Packer:	ft			
Interval between Packers:	20.00 ft			
Tool Length:	40.00 ft			
Number of Packers:	2	Diameter: 6.75 inches		

Tool Comments:

Tool Description	Length (ft)	Serial No.	Position	Depth (ft)	Accum. Lengths
-------------------------	--------------------	-------------------	-----------------	-------------------	-----------------------

Shut In Tool	5.00			3756.00	
Hydraulic tool	5.00			3761.00	
Packer	5.00			3766.00	20.00 Bottom Of Top Packer
Packer	5.00			3771.00	
Stubb	1.00			3772.00	
Recorder	0.00	8790	Inside	3772.00	
Recorder	0.00	8792	Outside	3772.00	
Perforations	16.00			3788.00	
Bullnose	3.00			3791.00	20.00 Bottom Packers & Anchor
Total Tool Length:	40.00				



**TRILOBITE
TESTING, INC.**

DRILL STEM TEST REPORT

FLUID SUMMARY

Charter Energy, Inc.
PO Box 252
Great Bend, KS 67530-0252
ATTN: Jim Musgrove

34-20s-16w Pawnee,KS
Grant Unit #1
Job Ticket: 49586 **DST#: 2**
Test Start: 2012.10.25 @ 12:39:14

Mud and Cushion Information

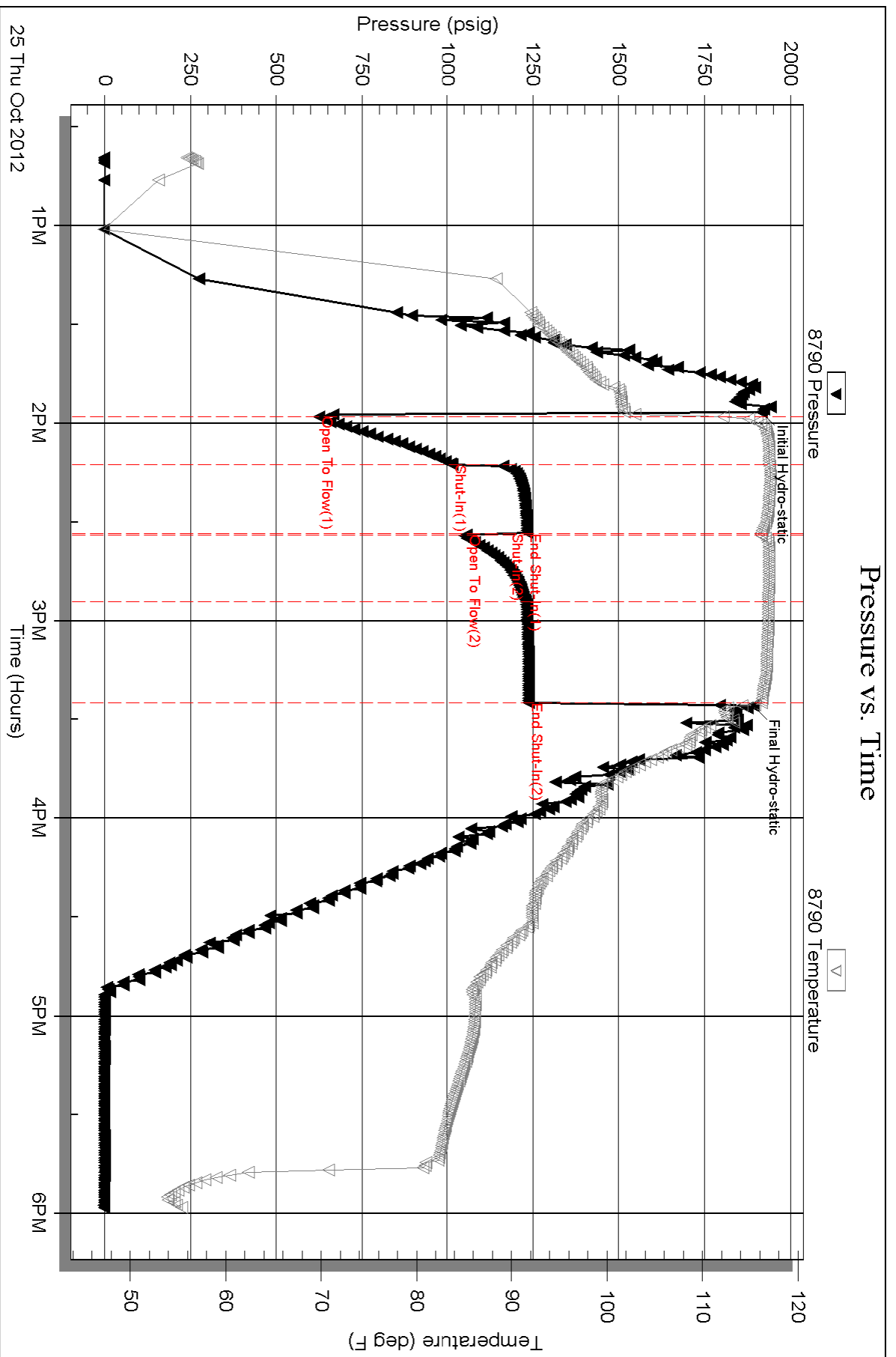
Mud Type: Gel Chem	Cushion Type:	Oil API:	deg API
Mud Weight: 10.00 lb/gal	Cushion Length: ft	Water Salinity:	37000 ppm
Viscosity: 61.00 sec/qt	Cushion Volume: bbl		
Water Loss: 9.19 in ³	Gas Cushion Type:		
Resistivity: ohm.m	Gas Cushion Pressure: psig		
Salinity: 9000.00 ppm			
Filter Cake: 0.02 inches			

Recovery Information

Recovery Table

Length ft	Description	Volume bbl
2040.00	GCW 5%gas, 95%w tr	28.616
700.00	MCW 30%mud, 70%w tr	9.819

Total Length: 2740.00 ft Total Volume: 38.435 bbl
 Num Fluid Samples: 0 Num Gas Bombs: 0 Serial #: none
 Laboratory Name: Laboratory Location:
 Recovery Comments:

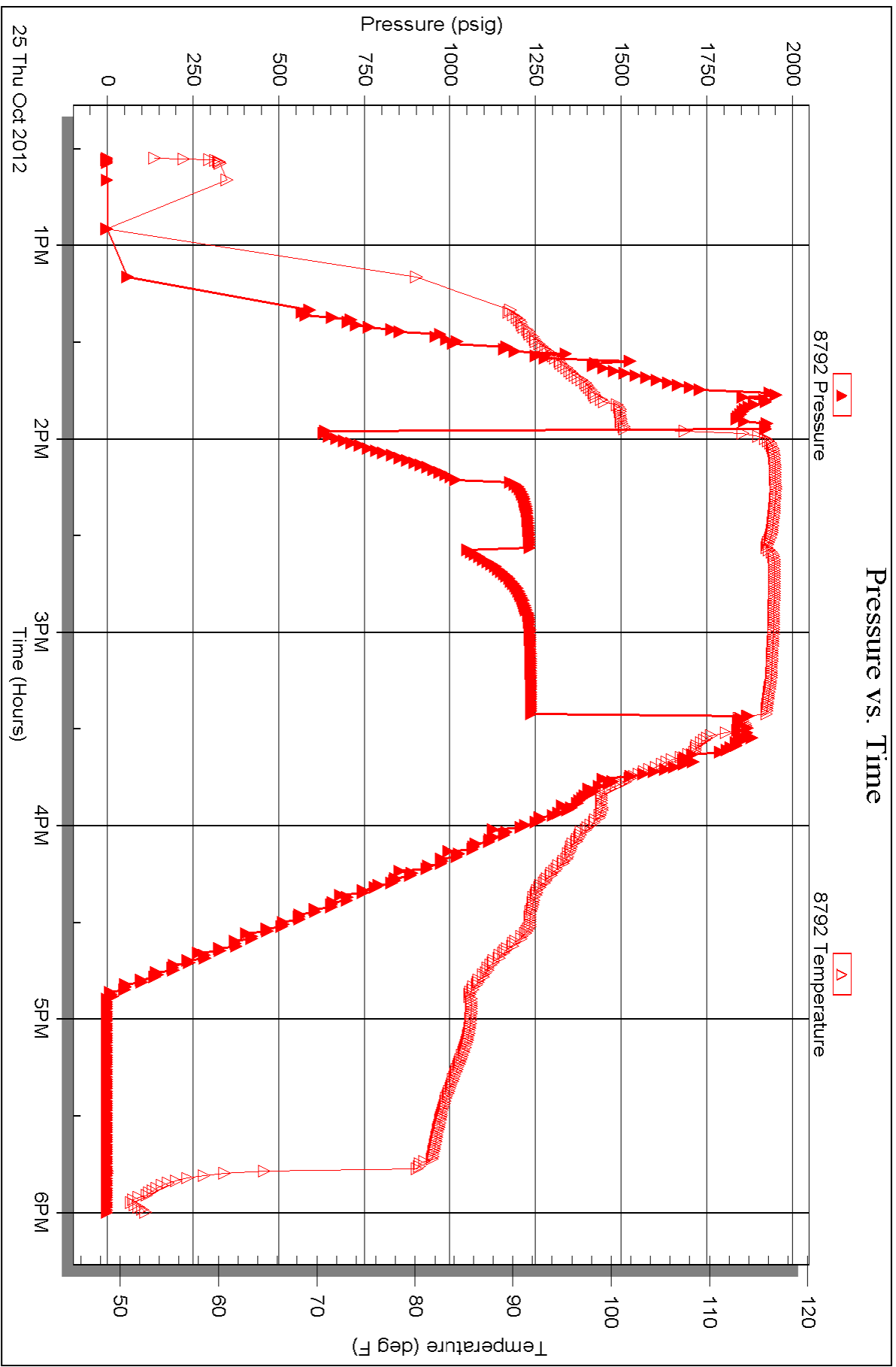


Serial #: 8792

Outside Charter Energy, Inc.

Grant Unit #1

DST Test Number: 2





TRILOBITE TESTING INC.

P.O. Box 1733 • Hays, Kansas 67601

Test Ticket

NO. 49585

4/10

Well Name & No. Grant Unit #1 Test No. 1 Date 10-24-12
 Company Charter Energy, Inc. Elevation 2057 KB 2000 GL
 Address P.O. Box 252 Great Bend, KS 67530-0252
 Co. Rep / Geo. Jim Musgrove/Steve Baize Rig Royal #2
 Location: Sec. 34 Twp. 20s. Rge. 11w. Co. Pawnee State KS

Interval Tested 3665-3740 Zone Tested Arbuckle
 Anchor Length 75' Drill Pipe Run 3667 Mud Wt. 9.4
 Top Packer Depth 3660 Drill Collars Run Ø Vis 58
 Bottom Packer Depth 3665 Wt. Pipe Run Ø WL 9.6
 Total Depth 3740 Chlorides 8,600 ppm System LCM 0#
 Blow Description IF: Strong blow. BOB 3min. No GTS FSI: No blow

FF: Strong blow. BOB 4 min. No GTS
FSI: No blow

Rec	Feet of	%gas	%oil	%water	%mud
<u>500</u>	<u>MCW</u>		<u>60</u>	<u>40</u>	
<u>600</u>	<u>GMW</u>	<u>5</u>	<u>75</u>	<u>20</u>	
<u>590</u>	<u>Clean gassy wtr.</u>	<u>5</u>	<u>95</u>	<u>0</u>	
Rec	Feet of	%gas	%oil	%water	%mud
Rec	Feet of	%gas	%oil	%water	%mud

Rec Total 1690 BHT 115 Gravity N/C API RW 24 @ 59 ° F Chlorides 35000 ppm
 Test 1150 T-On Location 1715
 Jars T-Started 1822
 Safety Joint T-Open 1958
 Circ Sub T-Pulled 2226
 Hourly Standby T-Out 0127
 Mileage 130 201.50 Comments _____
 Sampler _____
 Straddle _____
 Shale Packer _____
 Extra Packer _____
 Extra Recorder _____
 Day Standby _____
 Accessibility _____
 Sub Total 1351.50 MP/DST Disc't _____

Approved By _____ Our Representative Ryan Reynolds
 TriLOBITE Testing Inc. shall not be liable for damaged of any kind of the property or personnel of the one for whom a test is made, or for any loss suffered or sustained, directly or indirectly, through the use of its equipment, or its statements or opinion concerning the results of any test, tools lost or damaged in the hole shall be paid for at cost by the party for whom the test is made.



TRILOBITE TESTING INC.

P.O. Box 1733 • Hays, Kansas 67601

Test Ticket

NO. 49586

4/10

Well Name & No. Grant Unit #1 Test No. 2 Date 10-25-12
 Company Charter Energy, Inc. Elevation 2007 KB 2000 GL
 Address P.O. Box 252 Great Bend, KS 67530-0252
 Co. Rep / Geo. Jim Musgrove / Steve Baize Rig Royal #2
 Location: Sec. 34 Twp. 20s Rge. 16w Co. Pawnee State KS

Interval Tested 3771-3791 Zone Tested Arbuckle
 Anchor Length 20 Drill Pipe Run 3761 Mud Wt. 9.6
 Top Packer Depth 3766 Drill Collars Run Ø Vis 61
 Bottom Packer Depth 3771 Wt. Pipe Run Ø WL 9.2
 Total Depth 3791 Chlorides 9000 ppm System LCM Trc
 Blow Description IF: Strong blow. BOB 45 sec, No GTS IST: Weak surf. BB

FF: Strong blow. BOB 2 min. No GTS
FSI: No blow

Rec	Feet of	%gas	%oil	%water	%mud
<u>700</u>	<u>MCW</u>		<u>70</u>	<u>30</u>	
<u>2040</u>	<u>GCW</u>	<u>5</u>	<u>95</u>		
Rec	Feet of	%gas	%oil	%water	%mud
Rec	Feet of	%gas	%oil	%water	%mud
Rec	Feet of	%gas	%oil	%water	%mud

Rec Total 2740 BHT 117 Gravity N/C API RW 0.22 @ 62 °F Chlorides 37000 ppm

(A) Initial Hydrostatic 1915 Test 1150 T-On Location 1215
 (B) First Initial Flow 625 Jars T-Started 1239
 (C) First Final Flow 1015 Safety Joint T-Open 1358
 (D) Initial Shut-In 1233 Circ Sub T-Pulled 1525
 (E) Second Initial Flow 1056 Hourly Standby T-Out 1758
 (F) Second Final Flow 1229 Mileage 130 201.50 Comments _____
 (G) Final Shut-In 1237 Sampler _____
 (H) Final Hydrostatic 1892 Straddle _____
 Shale Packer _____
 Ruined Shale Packer _____
 Ruined Packer _____
 Extra Packer _____
 Extra Copies _____

Initial Open 15
 Initial Shut-In 20
 Final Flow 20
 Final Shut-In 30

Sub Total 1351.50
 Total 1351.50
 MP/DST Disc't _____

Approved By _____ Our Representative Ryan Reynolds
 TriLOBITE Testing Inc. shall not be liable for damaged of any kind of the property or personnel of the one for whom a test is made, or for any loss suffered or sustained, directly or indirectly, through the use of its equipment, or its statements or opinion concerning the results of any test, tools lost or damaged in the hole shall be paid for at cost by the party for whom the test is made.

QUALITY OILWELL CEMENTING, INC.

Federal Tax I.D.# 20-2886107

Phone 785-483-2025
Cell 785-324-1041

Home Office P.O. Box 32 Russell, KS 67665

No. 5246

Date	10-20-12	Sec.	24	Twp.	20	Range	10	County	Wagon Mound	State	KS	On Location		Finish	
Lease	Grant Unit	Well No.	7			Location						Wagon Mound Dist W 16 + W 12 90 N 104 32			
Contractor	Holiday King 2							Owner							
Type Job	Surface							To Quality Oilwell Cementing, Inc. You are hereby requested to rent cementing equipment and furnish cementer and helper to assist owner or contractor to do work as listed.							
Hole Size	12 1/4		T.D.			1010			Charge To						
Csg.	5 9/16		Depth			1008			Street						
Tbg. Size			Depth						Chart-v energy						
Tool			Depth						City						
Cement Left in Csg.	111.42'		Shoe Joint			46.42'			State						
Meas Line			Displace			61 1/2 BBL			The above was done to satisfaction and supervision of owner agent or contractor.						
												Cement Amount Ordered		410 3 1/2 CC 2 1/2 gal	

EQUIPMENT

Pumptrk	9	No.	Cementer												
			Helper												
Bulktrk	4	No.	Driver												
			Driver												
Bulktrk	2	No.	Driver												
			Driver												

JOB SERVICES & REMARKS

Remarks:	Calcium
Rat Hole	Hulls
Mouse Hole	Salt
Centralizers	Flowseal
Baskets	Koi-Seal
D/V or Port Collar	Mud CLR 48
	CFL-117 or CD110 CAF 38
	Sand
	Handling
	Mileage

FLOAT EQUIPMENT

	Guide Shoe
	Centralizer
	Baskets
	AFU Inserts
	Float Shoe
	Latch Down
	Baffle Plate
	Block Valve
	Pumptrk Charge
	Mileage

		Tax	
		Discount	
X Signature	Wong Basig	Total Charge	

1 26
38 / 1800

Phone 785-483-2025

Home Office P.O. Box 32 Russell, KS 67665

No. 5396

Cell 785-324-1041

Date	10-26-12	Sec.	38E	Twp.	20	Range	16	County	Pawnee	State	Ks	On Location		Finish	11:15 AM
Lease	Grant unit		Well No.	1		Location Pawnee Rock Ks - W on TR1 to									
Contractor	Royal #2					Owner 90 Rd, IN to W Rd, 3/4 W, 1/2 S to									
Type Job	Plug					To Quality Oilwell Cementing, Inc.									
Hole Size	7 7/8"		T.D.	3841'		You are hereby requested to rent cementing equipment and furnish cementer and helper to assist owner or contractor to do work as listed.									
Csg.						Depth	Charge To Charter Energy								
Tbg. Size	4 1/2" D.P.		Depth	3764'		Street									
Tool						Depth	City State								
Cement Left in Csg.						Shoe Joint	The above was done to satisfaction and supervision of owner agent or contractor.								
Meas Line						Displace	H2O/mud Cement Amount Ordered 220 5x 60/40 4 1/2 Gal 1/4yd								

EQUIPMENT

Pumptrk	5	No.	Cementer	Brett	Fl. Seal
			Helper		Common
Bulktrk	14	No.	Driver	Levy	Poz. Mix
			Driver	Rek	Gel.
Bulktrk	p.u.	No.	Driver		Calcium
			Driver		Hulls

JOB SERVICES & REMARKS

Remarks:	Hulls
Rat Hole	Salt
Mouse Hole	Flowseal
Centralizers	Kol-Seal
Baskets	Mud CLR 48
D/V or Port Collar	CFL-117 or CD110 CAF 38
3764' - 50 5x	Sand
1640' - 50 5x	Handling
400' - 50 5x	Mileage
60' - 20 5x	

FLOAT EQUIPMENT

Bathole - 30 5x	Guide Shoe
Mousehole - 20 5x	Centralizer
	Baskets
220 5x 60/40 4 1/2 Gal	AFU Inserts
1/4 PFI Seal	Float Shoe
	Latch-Down

Cement did Circulate.

	Pumptrk Charge	
	Mileage	
		Tax
		Discount
X Signature	Wong Budig	Total Charge

Geological Survey of Canada
Geologist's Report

Project Name: Grand Valley
 Location: Ontario
 Date: 1991
 Geologist: John W. H. ...
 Title: Geological Map of the Grand Valley

Scale: 1:50,000
 Sheet No.: 2500
 Date of Issue: 1991

The Grand Valley was mapped
 (understand of the 1970s) and
 (partially submitted)
 by John W. H. ...
 in 1970

